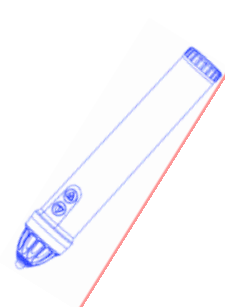
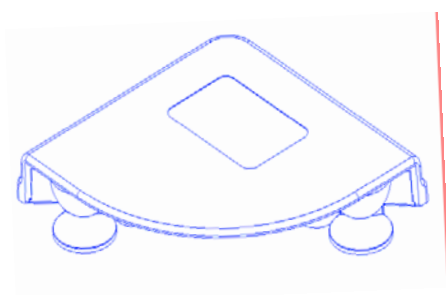


---

***Portable***

# Interactive Whiteboard

User Manual v3



**Table of Contents**



<b>Content</b>	<b>Page</b>
1. Safety Information.....	3-7
2. Scope of Supply.....	8
3. Electronic Stylus Usage.....	9-10
4. eBoard Software Installation .....	11-14
5. Portable eBoard Connection .....	15
6. Portable eBoard Configuration .....	16-18
7. eBoard Software Operation.....	19-25
8. Notices.....	26
9. Warranty.....	26
10. FCC Statement.....	27

**Note:**

Please read, understand and follow the information contained in this User Guide before installation and use this product.

**1. Safety Information**

This product was designed, and intended for use indoor via a wireless USB receiver connected to a desktop or laptop computer. Use this product in an outdoor and/or wet environment could damage this product and create a potentially unsafe operating condition

Meaning of Signal Words	
 <b>WARNING</b>	Indicates a potential hazard that could result in serious injury or death and/or property damage.
 <b>CAUTION</b>	Indicates hazards that could result in minor or moderate injury and/or property damage.

**1. Safety Information**

- Please read, understand and follow all safety information contained in this User Manual before installation and use this product.
- Do not use this product in an outdoor and/or wet environment.
- This product is not intended for use by unsupervised children. Always provide proper adult supervision when using this product around children.
- At least two qualified service technicians should perform the installation and removal procedure. Failure to do so could result in serious personal injury and/or damage from dropping this product.
- Before installation, take the wall material and wall strength into consideration. For details, please consult your dealer.
- Always place this product on a stable and level surface.
- Use only the designated wall mount and mobile stand hardware.
- Make sure the mounting screws are properly sized to handle the weight of this product.
- Make sure the mounting hardware is securely anchored to a solid structure.
- Only plug the power cord, power plug or power adaptor into an AC power outlet with the proper and indicated power supply voltage and is effectively grounded (earthed) through the normal wiring. If this product is used at a power supply voltage other than the one indicated, it would fail and may result in fire or electric shock.
- If the power cord or power plug or power adaptor cannot be plugged into the AC power outlet, contact a licensed electrician to replace the AC power outlet with a properly grounded (earthed) one.
- When you operate this product, the AC power outlet should be near this product and easily accessible.
- The fact that this product operates satisfactorily does not imply that the AC power outlet is grounded (earthed) and that the installation is completely safe. For your safety, if in any doubt about the effective grounding (earthing) of the AC power point, consult a qualified electrician.

## 1. Safety Information (Continue....)



- Do not defeat the purpose of the grounding (earthing) plug (for example, do not use a conversion plug).
- Always plug the power cord, power plug or power adaptor securely and firmly into an AC power outlet. Otherwise, overheating will occur, possibly resulting in electric shock or fire.
- Do not pull, bend, rest objects on, or chafe the power cord or power plug or power adaptor. Damage to the power cord or power plug or power adaptor can cause fire or electric shock.
- Do not attempt to repair the power cord, power plug or power adaptor. If the power cord or power plug or power adaptor is damaged or frayed, contact an authorized service representative for a replacement.
- Periodically clean the power cord or power plug or power adaptor to ensure the connection is free of dust. In a damp environment, a contaminated connector can draw a significant amount of current that can generate heat and eventually cause fire if left unattended over an extended period of time.
- Never the power cord or power plug or power adaptor with wet hands. Electric shock will result.
- Stop operation immediately if your product emits smoke, excessive heat, abnormal smell or unusual noise. These conditions can cause fire or electronic shock. Immediately turn your product off and unplug the power cord or power plug or power adaptor, and contact an authorized service representative for service.
- When disconnecting this product, hold the power plug or the power adaptor instead of the power cord. Pulling on a power cord forcibly can damage it and cause fire or electric shock.
- To prevent fire or shock hazard, do not expose this product to rain or any type of moisture.
- If metal objects or a liquid get into this product, turn this product off and unplug this product immediately. Contact an authorized service representative for service. Operating the contaminated product can cause fire or electronic shock.
- Never open or remove unit covers that are screwed with screws. A high-voltage component can cause electric shock.
- Do not alter this product or modify any parts. Alternation or modification can cause fire or electronic shock
- Before cleaning this product, unplug the power cord or power plug or power adaptor. Electric shock sometimes results.

**1. Safety Information (Continue....)**

- Do not open or alter the casing of this product. Electric shock or injury may result.
- Be careful about the location of the power cord, power plug or power adaptor to avoid it trips someone or causing this product to fall, etc. It may cause injury or product failure.
- Do not leave this product or any of its accessories on the floor to avoid someone break it when stepping on it or injured by tripping on it.
- Use only the included power cord or power plug or power adaptor. If other power cord or power plug or power adaptor is used, fire or electric shock might result.
- Keep batteries away from children and pets.
- Keep the marker's cap or battery out of reach of children to prevent swallowing.
- Be sure to use the specified type of battery only. Using incorrect type of battery can burn or leak.
- Ensure that battery is installed with correct polarity. Incorrectly installed batteries can burst or leak, resulting in spillage or injuries.
- Be sure to take out batteries worn away from the electronic stylus, etc. The battery worn away can leak.
- Be sure that a battery should not be charged, shorted, heated, broken or thrown into fire. Using wrong can leak generate heat or burst.
- Do not operate this product in a location with high temperature or high humidity. This product is suitable to work under: Temperature: 16°C to 35°C; Humidity: 10% to 80%; NO condensation.
- Unplug the power cord, power plug or power adaptor from the AC power outlet when:
  - The power cord or power supply plug is damaged.
  - A liquid is spilled onto this product.
  - This product is exposed to rain or water.
  - This product becomes malfunctions and/or need repairing.
  - This product falls or after its cabinet is damaged.
- This product use 2.4GHz frequency to connect with the wireless USB receiver. Please note:
  - Keep this product away from medical devices such as heart pacemakers.
  - Keep this product away from radio stations.
  - Keep this product away from IEEE802.11g/b wireless devices and/or switch off those wireless devices when they are not used.
  - Keep this product away from other electric devices.



### 1. Safety Information (Continue....)

- This product must be disposed in accordance with the relevant federal, state, and local laws and regulations.
- Do not install this product except by qualified service personnel.
- Avoid fire and heat source above 100°C.
- Use only same type “AA” / “AAA” alkaline batteries in electronic stylus.
- Be sure to insulate the battery before dispose it to avoid short circuit, overheat, rupture or ignite which may cause injury or fire. The battery must be disposed in accordance with the relevant laws and regulations.
- Do not attempt to recharge battery.
- Do not break or disassemble battery.
- Avoid eye and skin contact, ingestion and inhalation of battery chemicals in the event of a ruptured or broken battery.
- Replace all batteries at same time.
- Properly orient the plus (+) and minus (-) terminals of battery.
- Remove battery when not used for an extended period of time.
- When this product is not used over an extended period of time, switch it off and unplug the power plug or power adaptor. If it is unused and is left connected to a power source for a long period, degraded insulation may cause electronic shock, current leakage or fire.
- Do not position this product in a location where it is unstable.
- Do not place this product in a hot humid or dusty environment. Prolonged exposure to these adverse conditions may cause fire or electric shock.
- When moving this product, be sure to unplug the power cord, plug or power adaptor from the AC power outlet. If this product is moved with the power cord or plug or power attached, it can cause damage to the power cord, plug or power adaptor which could result in fire or electric shock.
- After installing or moving this product, lock the casters when it is hanging on a mobile stand.
- If this product is fallen down or damaged, turn this product off and unplug the power cord or power plug or power adaptor. Otherwise, it may cause fire or electric shock.

**1. Safety Information (Continue....)**

- Do not put drinks, other liquids or heavy items on the tray or screen. Accidental spillage of liquid into this product may cause severe damage. If this occurs, turn this product off, unplug the power cord or power plug or power adaptor and contact an authorized service representative for service.
- Do not lean against this product even this product is mounted on the wall.
- When this product is not used over an extended period of time, take the batteries out of the electronic stylus. Otherwise the batteries may leak. Do not use the leaked batteries.
- Do not install this product where it may be exposed to direct sunlight, near heating equipment, or near air-conditioning vents.
- Do not install this product in strong sunlight or strong lighting.
- Do not install this product in locations where the temperature may change suddenly.
- Do not allow writing to remain on the screen for an extended period of time as it will become harder to erase.
- Do not erase with an overly dirty eraser.
- Use only designated markers and erasers. Use of accessories other than those authorized (such as oil-based markers) may damage the screen or result in hard-to-erase markings.
- If you connect the wireless USB receiver to a USB hub, it is not guaranteed to work.
- Do not connect two or more this product to a computer.
- Fasten the screws tightly to avoid the stand or this product fall which may cause injury or damage.
- Before installation, take the wall material and wall strength into consideration. For details, please consult your dealer.

---

## **2. Scope of Supply**

After unpacking, please make sure all of the following parts (subject to your purchase) are present

BASIC SYSTEM		
Item	Description	Quantity
1	Portable eBoard Sensor	1
2	Electronic Stylus (excludes battery)	1
3	Software CD-ROM	1



### 3. Electronic Stylus Usage

#### Item

#### Description

1

Pen Tip = Left Click of mouse  
 Pen Button L = Show /Hide eboard toolbar  
 Pen Button R = Right Click of mouse



2

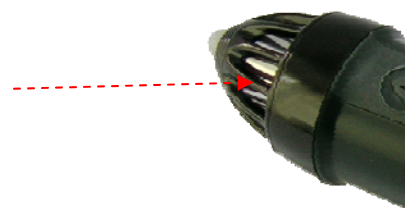


Open the battery cover and insert one piece of alkaline battery. Make sure the positive (+) and negative (-) terminals of battery are properly oriented.

3

Do not cover the transmitter with your hand when using.

Transmitter



4

Press down firmly with the tip of the electronic stylus on the screen until you hear a slight buzzing sound and then move it slowly. However, do not press down the tip too much strongly.

5

Do not use two pieces of electronic stylus at the same time.

6

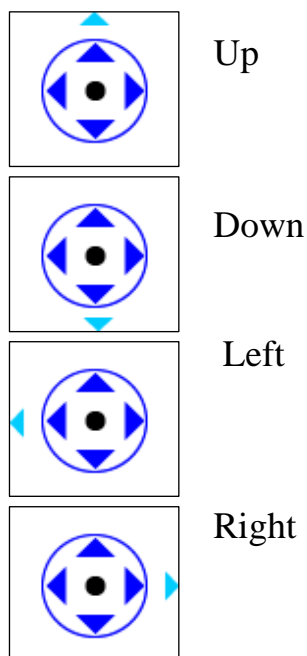
Please keep the electronic stylus perpendicular to the screen for precise positioning

7

When battery at the low level, dialog of "Low Battery" will be pop-up to remind you to change battery for your stylus.

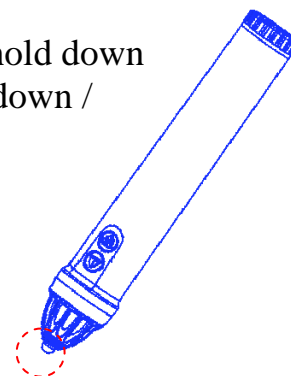
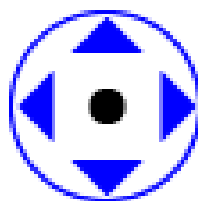


## Stylus Scroll hot key



To scroll,

Simply use Stylus hold down  
3 sec & move up / down /  
left / right.



#### 4. eBoard- Software Installation

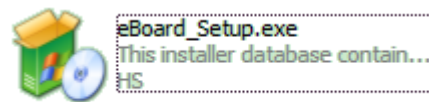
**1** Install eBoard software

**2** Install eBoard driver

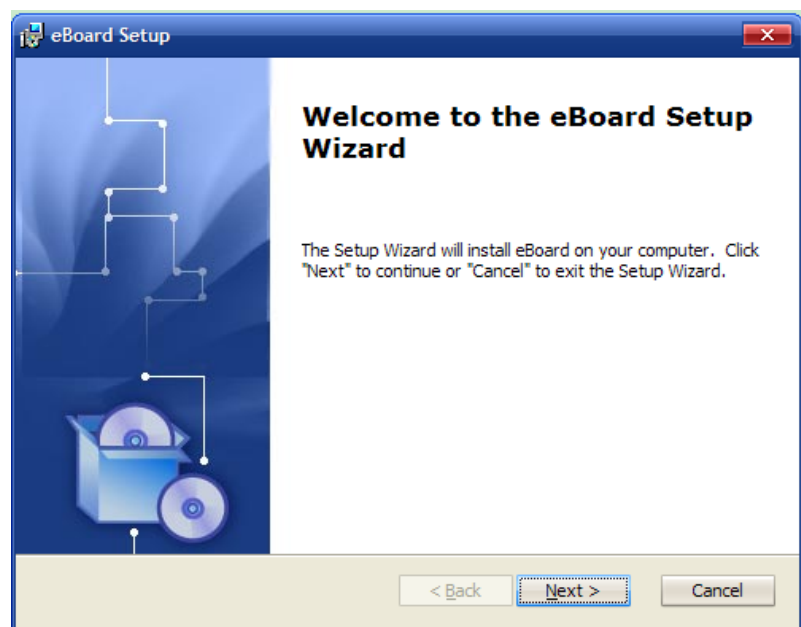
**DO NOT** connect eBoard USB cable into your computer before eBoard software & driver has been installed.

##### **Step 1** Install eBoard software

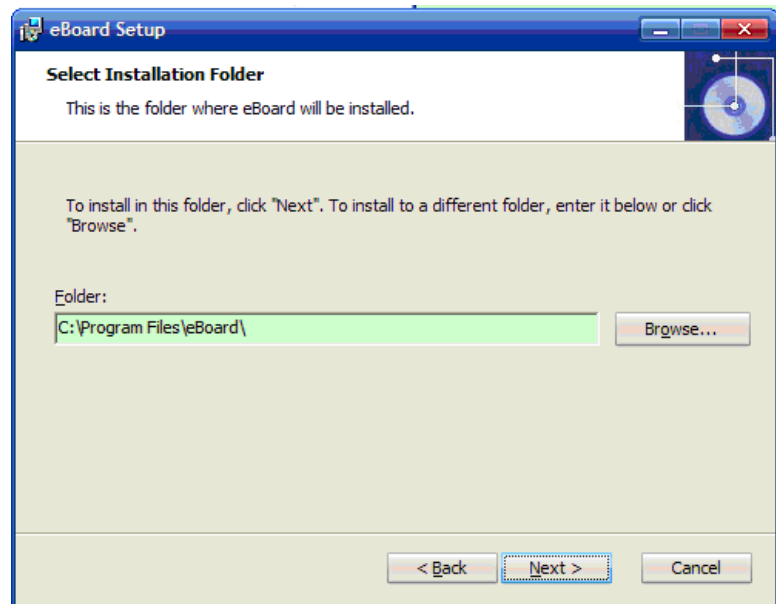
- 1) To run the Installation Program, double-click file name " eBoard\_setup.exe"



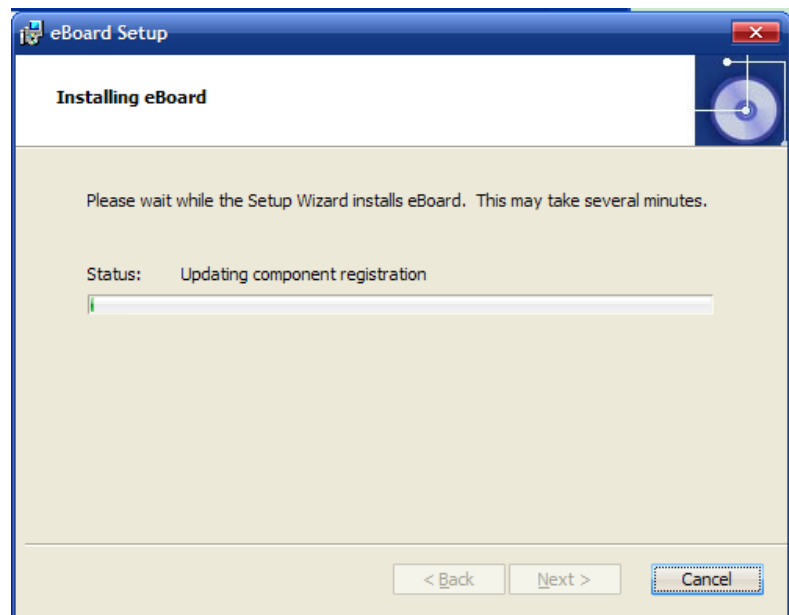
- 2) Click "Next" to install the software



- 3) Choose destination location and click "Next" to continue.

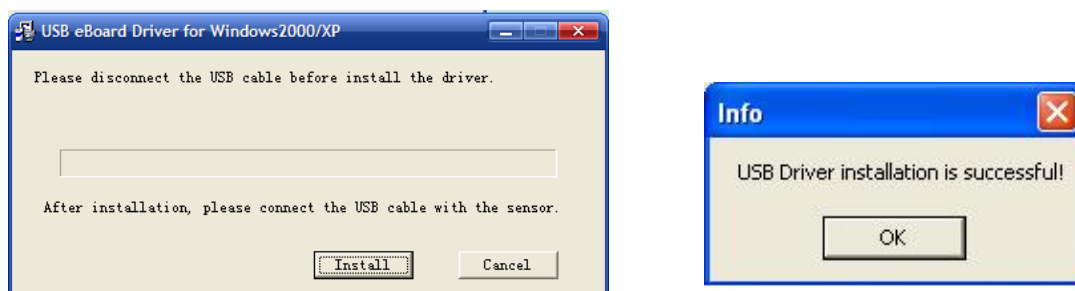


- 4) Installation Status Bar will be displayed and it will be closed automatically once installation completed.



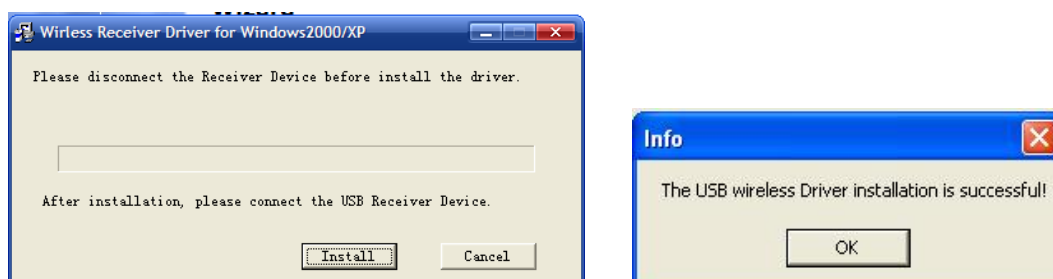
**Step 2****Install the driver of eBoard-USB or eBoard-Wireless model**

- 5) Click "Install" to install driver for eBoard-USB.  
Click "Cancel" if you want to install driver of eBoard-Wireless

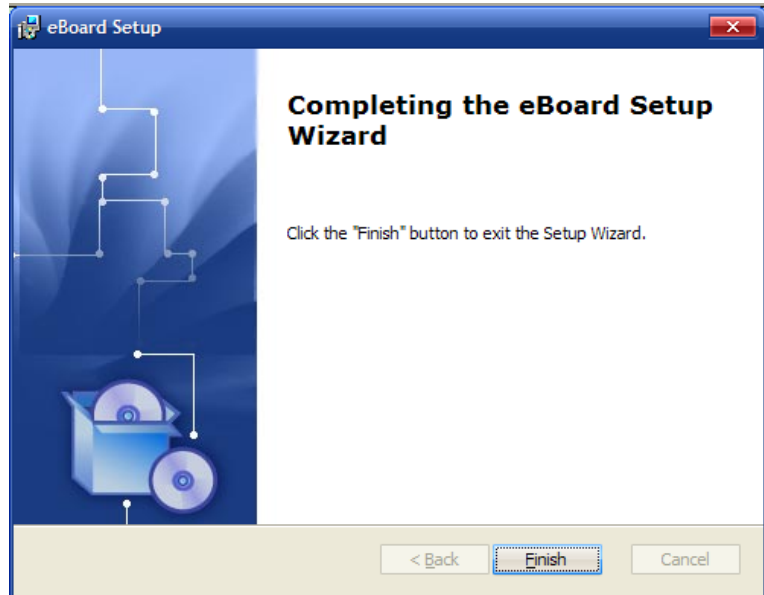


Installation Status bar will be displayed and "USB Driver Installation is successful" dialog will be shown once USB driver's installation completed.  
Then click "OK".

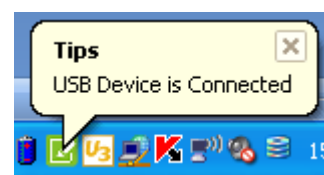
- 6) eBoard Wireless Receiver installation dialog will be shown after the installation of USB Driver has been completed.  
Click "Install" to install driver of eBoard-Wireless.  
Click "Cancel" if you have already installed the driver of eBoard-USB
- 7) Installation Status bar will be displayed and "USB Driver Installation is successful" dialog will be shown once USB driver's installation completed.



- 8) Click "Finish" to exit upon the eBoard-USB or eBoard-Wireless driver has been successfully installed.



- 9) Plug the other end of USB cable into your computer/laptop's USB port.
- 10) eBoard-USB or eBoard-Wireless Receiver has been detected and ready to use upon the following dialogue shown.



## 5. Portable eBoard Connection

User must have PC, projector, eBoard-USB or eBoard-Wireless Receiver and connect them as shown in the figure below.

**eBoard-USB Model Connection Diagram**



**eBoard- Wireless Model Connection Diagram**

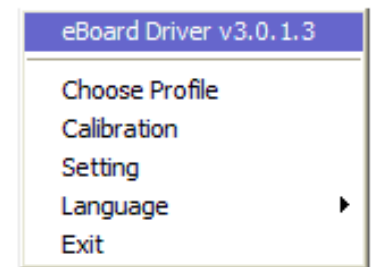
Upon the connection is completed, adjust the position of the video projector until the projected Windows screen on the board is within the whiteboard working area.



## 6. Portable eBoard Configuration

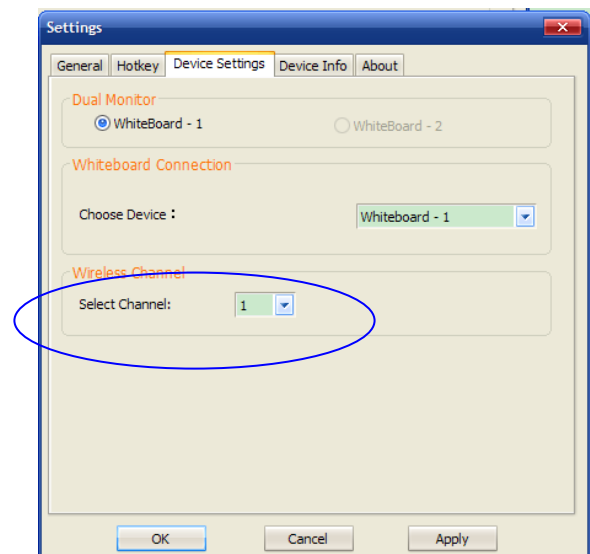
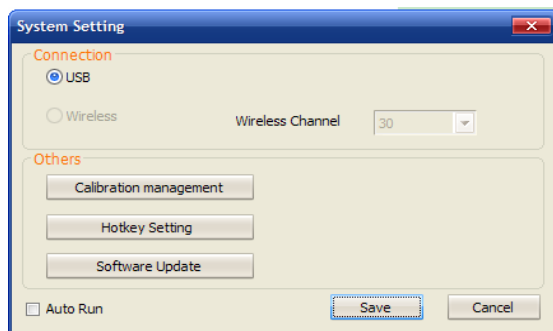
### eBoard configuration Main Menu

Right click the icon to show the Main Menu of eBoard- configuration .



#### ■ Wireless setting

20 channels are available for eBoard-Wireless. To change channel for eBoard-Wireless, selected "Wireless" and channel then click "Save".



#### ■ Internet Update

To keep the eBoard software up to date, when internet connected and latest software version is available, live update will be carried automatically.

**Note:** If you are using Windows 7 or Vista. The Microsoft's security settings does not allow automated connect to the server for software update. Please disable the UAC when using this feature, otherwise the new version of the software would be unable be download

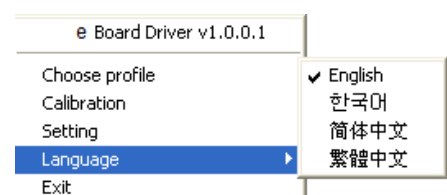
#### ■ Auto Run

User once enable the auto run, the eboard driver will automate start in each restart windows.

If eboard is not every day to use can choose to disable auto run.

#### ■ Language

eBoard supports multi-language (e.g. English, Chinese, Spanish, Japanese, Korean & French)



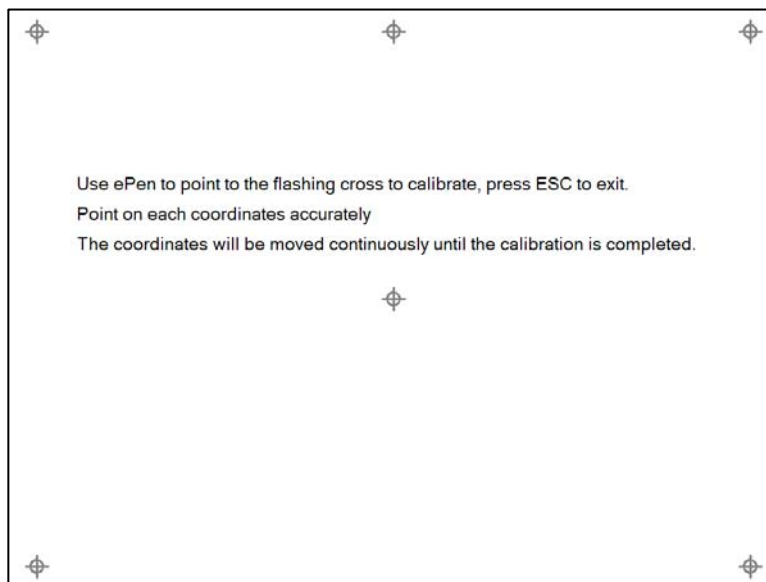


## ■ Calibration

Calibration for eBoard after first time installation or projector size and projector's position has changed.

### Step 1

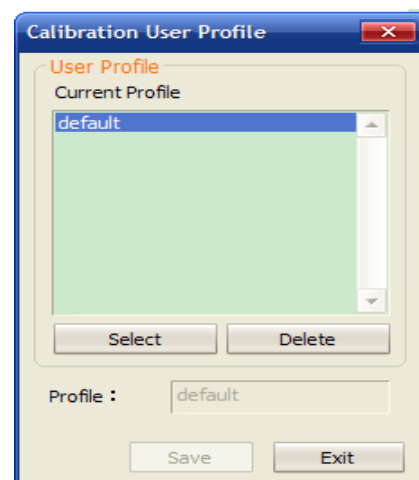
Click the flashing cross to calibrate, press ESC to exit. Point on each coordinates accurately. The coordinates will be moved continually until the calibration is completed.



### Step 2

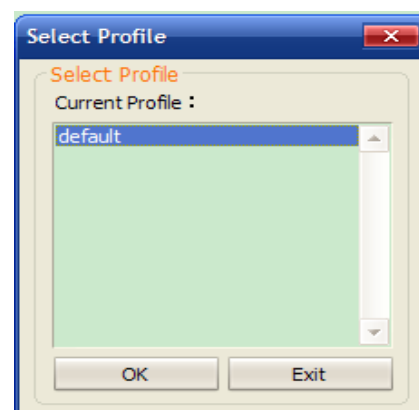
Calibration data can be saved for each location with same resolution and projector setting.

Users do not have to calibrate again for the same location provided that the projector's position and setting remain the same.



### Step 3

User can select location profile when using eBoard in the same location next time.



## ■ Button Setting



- 10 hotkeys can be set
- Hotkey strip (provided) can be pasted at any position on the whiteboard
- User can set Calibration, open application software as eBoard hotkeys.

User can set the hotkey's coordinate by the following steps *if the necessary*.

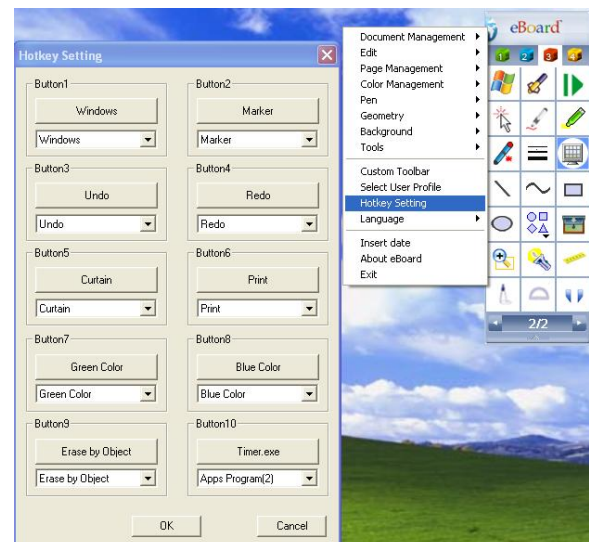
Step 1 => Select hotkey size & “Enable Button” on the Button Setting

Step 2 => Move the cursor to the coordinate next to Button 1

Step 3 => Point on the “**right top corner on Button**” 1 in Whiteboard, the X,Y coordinate will be show

Step 4 => Repeat Step 2 & 3 to set Button 2 to Button 10.

Step 3 => Click “OK” to save the settings



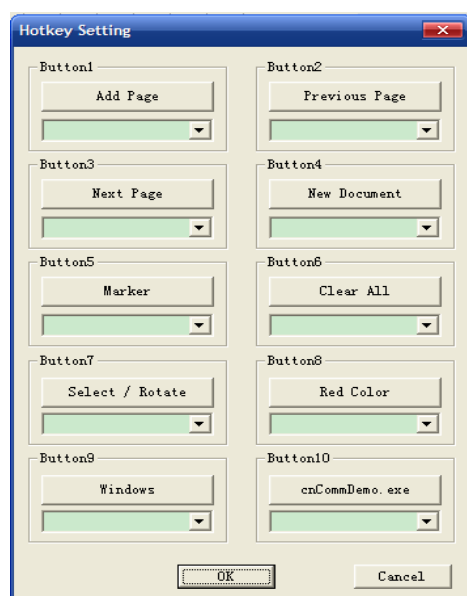
## 7. eBoard Software Operation

### Drag & move toolbar Location

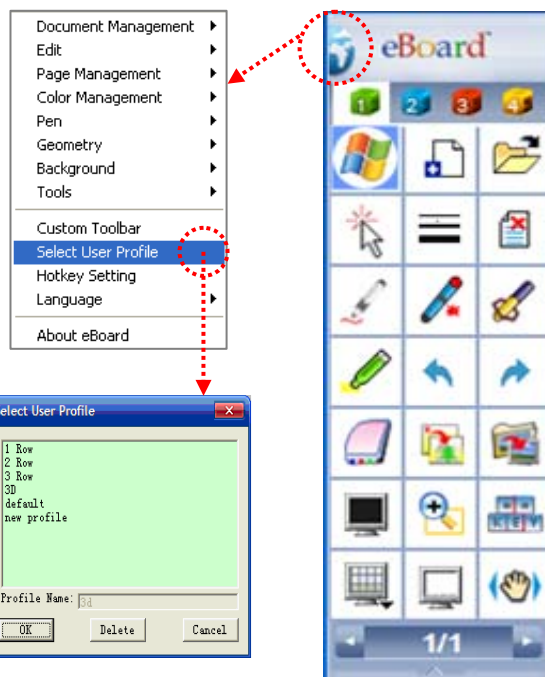


### Hotkey Setting

Users can configure 10 different button hotkeys from function list



### To display the sub-menu, click the logo on the toolbar



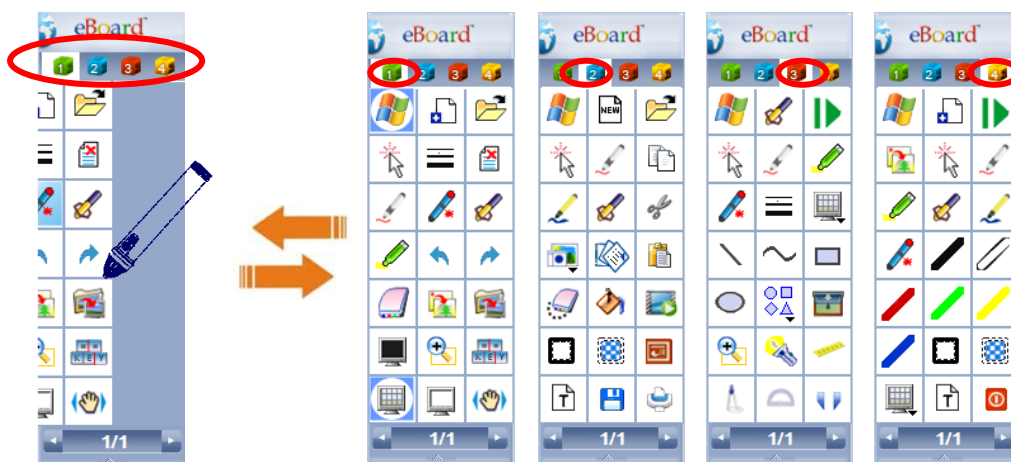
### Toolbar customization



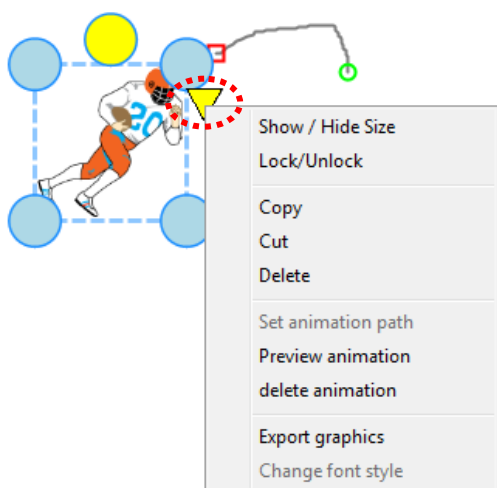
Users can customize the toolbar by user preference

- Select Button Layout (1 Row, 2 Rows , 3 Rows or 3D multi layer)
- Select Button Orientation (Horizontal or Vertical)
- Select functions to be displayed in toolbar
- Setup Toolbar brightness
- Setup playback speed
- Enable / disable “Auto Run at Startup”
- Enable / disable “Line Enhancer”
- Select “Save As” button to save your customize new toolbar
- Saved user profile can be re-called in sub-menu

### Use Stylus drag of button to swap 1-4 page menu

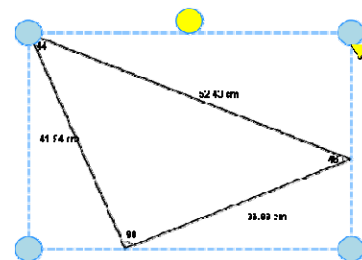


### Quick Menu for Object



Click the yellow arrow, quick menu will pop up:

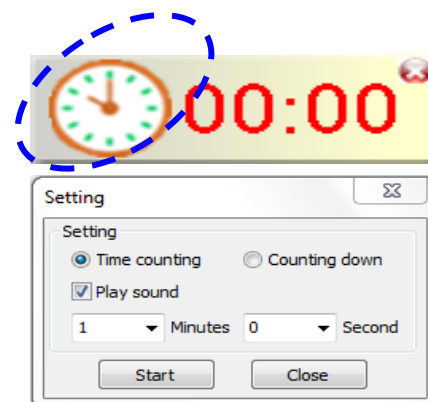
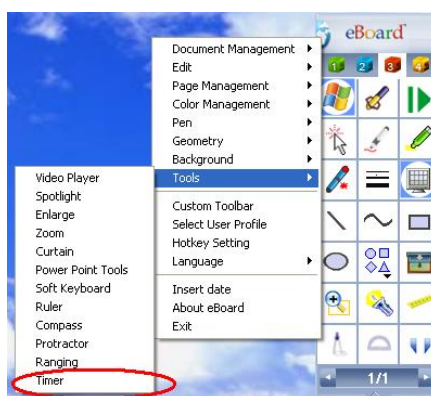
- Show /Hide figures for the measured geometry
- To protect the object, click “Lock/Unlock”. Click one more time to release.
- “Set animation path” - allow user to create moving path for the selected object. Object motion can save as flash or video
- Click “Export graphics” to export the selected object to the common graphic file format



### Timer

Click logo of eBoard, select “Tools” then click “Timer”. Timer will be shown up.

To set up the timer, click the icon of clock.














## Annotating your Desktop






eBoard Software allows you to annotate your computer by the following functions.

### File Management





<i>Icon</i>	<i>Functions</i>	<i>Description</i>
	New Document	Create New Document
	Open Document	Open Document : word, Excel, PPT, PDF, & Office 2007 Doc format
	Save Document	Save Document, document can be saved in eBoard file format & jpg,bmp,png,wmf,tiff,html,pdf,wmv,swf,flv,mpeg,mov... Exporting image format : wmf,tiff,gif,jpeg,bmp.jpg,png
	Print	Print Document
	Exit	Exit Program

### Editing Tools

<i>Icon</i>	<i>Functions</i>	<i>Description</i>
	Clear All	Clear All Selection
	Insert Image	Insert Image from Library : Image : jpg,jpeg ,bmp,gif,png,wmf,tiff, Video : mov,wmv,asf,mov,mpg,mpeg,avi,swf. Audio : wma,wav,mp3
	Copy	Copy written line
	Paste	Paste written line
	Cut	Cut written line
	Delete Selection	Delete the selected area
	Select object	Select object / Resize /Rotate
	Scroll	Scroll move pages
	Insert Text	Insert text or text file in the existing document
	Undo	Allow user to undo written lines.
	Redo	Allow user to redo the written lines.

	Playback	Playback content for entire page
	Eraser	Erase by point
	Erase Object	Erase the selected object
	Fill Color	Fill Color for Shape
	Capture Background	Screen Capture




### Page Tools

<i>Icon</i>	<i>Functions</i>	<i>Description</i>
	Add Page	Add a blank page in the existing document.
	Previous Page	Switch to previous page.
	Next Page	Switch to next page.
	Page List	Page browser for the existing document and user can perform page switch.


### Color Selection

<i>Icon</i>	<i>Functions</i>	<i>Description</i>
	Select Color	Select Pen Color
	Select Fill Color	Select Fill Color
	Black Color	Black Color Pen
	White Color	White Color Pen
	Blue Color	Blue Color Pen
	Red Color	Red Color Pen
	Green Color	Green Color Pen
	Yellow Color	Yellow Color Pen






**Pen and Line Selection**

<i>Icon</i>	<i>Functions</i>	<i>Description</i>
	Smart Pen	Shape / line Recognition
	Pen	Pen
	Brush	Brush
	Highlighter	Highlighter for emphasis
	Laser Pen	Laser Pen for presentation
	Line	Line
	Curve	Curve
	Rectangle	Rectangle Shape
	Ellipse	Ellipse Shape
	Line Thickness	Adjust Line Thickness








**Geometry Drawings**

<i>Icon</i>	<i>Functions</i>	<i>Description</i>
	Geometry Drawings	Geometry Drawings Selection
	Geometry Line	Geometry Line
	Geometry Rectangle	Geometry Rectangle / Square
	Geometry Ellipse	Geometry Ellipse
	Geometry Triangle	Geometry Triangle
	Geometry Circle by Radius	Geometry Circle by Radius
	Geometry by Diameter	Geometry by Diameter
	Geometry by 3 Points	Geometry by 3 Points
	Geometry Parallelogram	Geometry Parallelogram
	Geometry Pentangle	Geometry Pentangle
	Geometry Coordinate	Geometry Coordinate

### Background Selection


<i>Icon</i>	<i>Functions</i>	<i>Description</i>
	Windows / White Board	Switch between Windows and White Board
	White Background	White Background
	Insert Background	Insert Image Background
	Windows Background	Windows Screen or Select Other Background Color
	Black Background	Black Background

### Add-on Tools

<i>Icon</i>	<i>Functions</i>	<i>Description</i>
	Spotlight	Spotlight the importation parts of presentation. Environment brightness and size of spotlight can be adjusted by users' preference.
	Zoom In	Zoom In the selected parts of presentation Area and size can be adjusted.
	Zoom	Zoom In
	Curtain	Hide / Unhide a portion of presentation to draw the audience's attention.
	Keyboard	Soft Keyboard
	Protractor	Measure angle
	Compass	Draw circle
	Ruler	Ruler : mm, cm, in,
	Gauge	Measure Dimension



**Plug-in Application Software**




	Power Point Helper	Users can call up a Power Point Helper from the eBoard menu and control the Power Point presentation
---	--------------------	--



5 functions can be selected from Powerpoint Helper

- Open Document
- Slide Show / End Slide Show
- Previous Page
- Next Page
- Laser Pen

User can select "Laser Pen" to draw over presentation, drawings will be disappeared in 5 Seconds.

	Media Player Toolbar 	Users can open a media file (support flash .mpeg, asf, avi, mpg, wav), the video playing and drawing over the video.
	 USB Video Capture	User can capture video and drawing over the video



## **8. Notices**

Every effort has been made to ensure all information contained in this user guide is correct, but the accuracy or completeness is not guaranteed. Before using this product, you must evaluate it and determine if it is suitable for your intended application. You assume all risks and liability associated with such use. Any statements related to this product which is not contained in this manual or any contrary statements contained on your purchase order shall have no force of effect unless expressly agreed upon, in writing, by this company.

Without this company permission, reproduction or reprinting this user guide or any part is prohibited.

The contents of this user guide are subject to change without prior notice.

## **9. Warranty**

This product hardware, which is limited to the built-in Sensor, Wireless USB Receiver, Power Adaptor and Electronic Stylus is warranted to be free from defects in material or manufacture for one (1) year from the date of purchase. THIS COMPANY MAKES NO OTHER WARRANTIES OR CONDITIONS INCLUDING, BUT NOT LIMITED TO, ANY IMPLIED WARRANTY OF CONDITION OF MERCHANTABILITY OR FITNESS FOR A PARTICULAR PURPOSE. If this product is defective within the warranty period stated above, your exclusive remedy shall be, at this company's option, to replace or repair this product or refund the purchase price of this product. This company will not be liable for any direct, indirect, special, incidental or consequential loss of damage arising from this product.

You will bear the costs of all required services, repairs and damages resulting from defects in this product and will bear the costs of direct or indirect damage (including the loss of profits or required information) that resulted from this product defects.

Even during the warranty period stated above, you will need to pay a repair charges in the following cases:

- When you are not the original purchaser (for example, you purchase it from another customer).
- When the malfunction or damage results from improper handling (such as fall, impact, etc. during transportation, movement or using).
- When the malfunction or damage results from handling contrary to the methods, warnings and cautions mentioned in this user guide.
- When the malfunction or damage result from abnormal voltage, pollution or other natural disasters.
- When the malfunction or damage results from a connection by other equipment not authorized by this company.
- When the malfunction or damage results from consumables ordinary wear and tear during normal use.

You are responsible for shipping charges required to send all or part of this product for repairing.

You are responsible for the labor fees for repair-associated equipment assembly or disassembly.

The aforementioned warranty provisions supersede all express or implied warranties that include legal defect liability.

## **10. FCC Statement**

1. This device complies with Part 15 of the FCC Rules.

Operation is subject to the following two conditions:

(1) This device may not cause harmful interference, and

(2) This device must accept any interference received, including interference that may cause undesired operation.

2. Changes or modifications not expressly approved by the party responsible for compliance could void the user's authority to operate the equipment.

### **FCC ID: X9YHSTNX0001**

This device complies with Part 15 of the FCC Rules. Operation is subject to the following two conditions: (1) This device may not cause harmful interference, and (2) This device must accept any interference received, including interference that may cause undesired operation.

NOTE: This equipment has been tested and found to comply with the limits for a Class B digital device, pursuant to Part 15 of the FCC Rules. These limits are designed to provide reasonable protection against harmful interference in a residential installation. This equipment generates, uses and can radiate radio frequency energy and, if not installed and used in accordance with the instructions, may cause harmful interference to radio communications. However, there is no guarantee that interference will not occur in a particular installation. If this equipment does cause harmful interference to radio or television reception, which can be determined by turning the equipment off and on, the user is encouraged to try to correct the interference by one or more of the following measures:

- Reorient or relocate the receiving antenna.
- Increase the separation between the equipment and receiver.
- Connect the equipment into an outlet on a circuit different from that to which the receiver is connected.
- Consult the dealer or an experienced radio/TV technician for help.