



Our company reserves the right of final  
interpretation of the User Manual.

Please contact the customer service center of the company  
if necessary.

The pictures in the manual are  
just for a reference only, the actual item is the standard.

Add: Dajiahe Industrial Zone, Ninghai, Ningbo Zhejiang, China  
Tel: 0086-574-65151119 400-8888-444  
Fax: 0086-574-65159703 PC: 315621  
E-mail: [chineseales@mapor.com](mailto:chineseales@mapor.com) [sales@mapor.com](mailto:sales@mapor.com)  
Http: [www.mapor.net](http://www.mapor.net) [www.chinesebattery.com](http://www.chinesebattery.com)



## Manual WP-C700

# PRODUCT USER MANUAL

Zhejiang Mapor Electronic Technology Co., Ltd.

Notice  
Dear customers,

Thanks for choosing the WP-C700 series UMPC manufactured by Zhejiang Mapor Electronic Technology Co., Ltd! Please carefully read the instruction and guidance in this User Manual before operating the product, and use the original fittings provided by the manufacturer only, so as to avoid any unexpected damages. Any improper operation or using of incompatible fittings will invalidate the warranty and even endanger your and others' safety. The company will not be liable for any damages thereof. When you start using the product, you will be deemed to have carefully read this manual. Please complete all items in the Warranty Statement within one month after you purchasing the product, and mail it to the company, so as to ensure better after-sale assistances and services for you. The company reserves the right of final interpretation of the User Manual. The product is subject to change without notice. The actual product shall prevail. If necessary, please visit the company website [www.mapor.net](http://www.mapor.net) for inquiry. All updates and update information of the software will be published on the website. The user has the freedom to decide whether to update the software. Sorry for any inconvenience! Please back up important information. The company will not be liable for any loss caused by the loss of data. Even if the manual has been carefully checked, it may still have few character errors. Please contact the customer service center of the company if necessary.

## CONTENTS

<b>1.Use Guidance</b>	<b>01</b>
<b>1.1 Power supply and charging the UMPC</b>	<b>01</b>
<b>1.1.1 Power supply</b>	<b>01</b>
<b>1.1.2 Charging with the power adapter</b>	<b>02</b>
<b>1.2 Starting and shutting down the UMPC</b>	<b>02</b>
<b>1.2.1 Start</b>	<b>02</b>
<b>1.2.2 Suspend</b>	<b>02</b>
<b>1.2.3 Shutdown</b>	<b>02</b>
<b>1.3. Restarting the system</b>	<b>02</b>
<b>1.4 Using TF memory card</b>	<b>03</b>
<b>2. Basic operation</b>	<b>04</b>
<b>2.1Main menu of system and main functions</b>	<b>05</b>
<b>2.2 Features of WIFI</b>	<b>05</b>
<b>2.3 Setup and instruction of WIFI</b>	<b>08</b>
<b>2.4Achieving the computer synchronization through Microsoft ActiveSync</b>	<b>08</b>
<b>3.Normal Malfunction and Maintenance of UMPC</b>	<b>10</b>
<b>4.Product summary</b>	<b>11</b>

# Chapter I Use Guidance

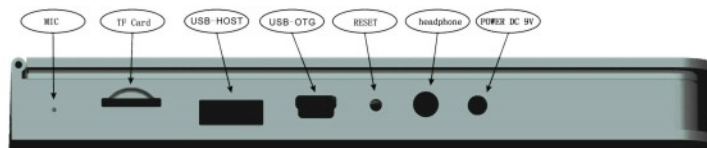


Illustration of side ports

## 1.1 Power supply and charging the UMPC

Please use the power adapter to fully charge the battery when using the WP-C700 UMPC for the first time.

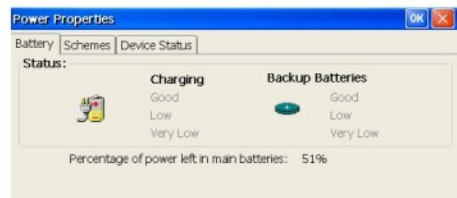
### 1.1.1 Power supply

The UMPC has two types of power supply: battery and power adapter.

Specification of battery: 7.4V, 1700mAh

Specification of power adapter: 9V, 1.5A

When the WP-C700 is connected to the charging adapter, the UMPC is running on the charger power, the battery power icon [ ] at the lower right corner of the system main interface or the power properties interface is indicating the charging status and displaying the remaining battery power.



When the WP-C700 UMPC is connected to the external charging adapter, it is running on the external power.

#### 【Prompt】

The power of the UMPC is supplied through a built-in lithium polymer battery. The actual running time remaining on the battery will vary with the operation status of the WP-C700 UMPC. For example, the time remaining will decrease when some functions (audio, video, and high brightness backlight) are consuming lots of power.

#### 【Attention】

The device adopts the built-in lithium battery. In order to avoid the occurrence of any accident such as fire or burn, please do not disassemble, perforate, and impact the battery or throw the battery in fire or water.

## 1.1.2 Charging with the power adapter

Please use the power adapter to fully charge the battery when using the WP-C700 UMPC for the first time. Please connect the DC terminal of the power adapter to the power connector at the underside of the WP-C700 UMPC body; connect the other terminal of the adapter to the power socket for power supplying and charging.

#### 【Prompt】

The charging indicator turning red refers to ongoing charging. Please do not remove the adapter before the battery being fully charged. The charging indicator will turn green when the battery is fully charged. Please charge the UMPC in time in the case of low battery level or critical battery level.

## 1.2 Starting and shutting down the UMPC

### 1.2.1 Start

Please check whether the battery power is sufficient, or whether the UMPC is connected to the external power;

Press the power button at the center of WP-C700 UMPC for 3 seconds to start the computer.

#### 【Attention】

When the host is transported from one place to another, please start the UMPC only after leaving the host for a certain time, as the instant change of humidity may cause the short circuit inside the host.

### 1.2.2 Suspend

Briefly press the power button on the screen housing or access the Start menu and select the Suspend mode to initiate Suspend. Briefly press the power button again to awake the system. The system will automatically display the status before Suspend.

### 1.2.3 Shutdown

Press and hold the power button of WP-C700 UMPC to shut down the UMPC, or click the Start menu and select Shutdown.

## 1.3. Restarting the system

In case of no response from the system, restart the system through the following methods:

1. Press and hold the power button of WP-C700 UMPC to restart the system.
2. Use the touch pen to press the "reset" button at the side of the UMPC.

#### 【Information】

The following circumstances may cause the unresponsive system:

The switching process of the menu is suspended or stopped;  
The execution of a function costs a long time after clicking and selecting the function. Function can not be activated;

After the user pressing the power button, the UMPC still can not be started or shut down.

#### 【Attention】

In case of unresponsive system, pressing the power button to restart the system may cause the loss of unsaved system information. Please back up the relevant data in time.

## 1.4 Using TF memory card

Please properly insert the TF card into the slot.

### 【Attention】

Do not remove the TF card when the system is reading the files in the card.

### 【Attention】

Do not press or bend the TF card. Do not drop and impact the TF card.

Do not use the TF card under high temperature and high humidity. Do not place the TF card under high temperature or direct sunlight. Keep the card away from the liquid and corrosive materials.

Please properly insert the TF card into the slot. Improper inserting will damage the slot and TF card.

# 2. Basic operation

## 2.1 Main menu of system and main functions

Main menu of system



### Functions:

WIFI	For wireless net surfing
iExplorer	Access websites through IE browser
PLAYER	Video player. Support video files with formats of avi, 3GP, asf, FLV, WMV etc.
Media Player	Audio player for playing audio files
MSN	Network communication tool
Office	1. Software for processing EXCEL files 2. Reader for PDF files 3. Reader for PPT files 4. Reader for WORD files 5. Editing tool for WordPad file
RECORDER	Software for recording

This chapter is to introduce notices on the operation of WIFI of WP-C700 UMPC.

## 2.2 Features of WIFI

WIFI, with the full name of Wireless Fidelity, also known as 802.11b/g standard, has its major advantage of high transmission speed which can reach 54Mbps. Besides, WIFI, compatible with various 802.11 DSSS devices, also has a long valid transmission distance, and can achieve the wireless net surfing.

## 2.3 Setup and instruction of WIFI

This chapter is to introduce the method of using WIFI to achieve wireless net surfing.

### 【Prompt】

The UMPC within the hotspot coverage of WIFI is the precondition of achieving WIFI net surfing. Operation

2.3.1. Double click the unconnected WIFI icon [ ] at the lower right corner of the Desktop to access the GSP186861 properties menu (see Fig. 2.3.1);

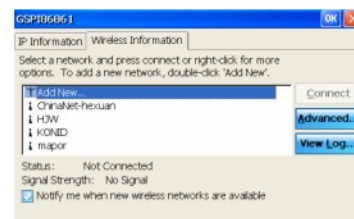


Fig. 2.3.1

2.3.2. Double click Mapor Wireless Network to open the menu of wireless network properties (see Fig. 2.3.2);



Fig. 2.3.2

【Attention】 The method of encryption indicated in the properties of wireless network is consistent with that of wireless router .Not setup is needed.



2.3.3. Uncheck the item of “The key is provided automatically”, and input the relevant key of wireless network setup in the text area of network key. Please see Fig. 2.3.3 for the menu.

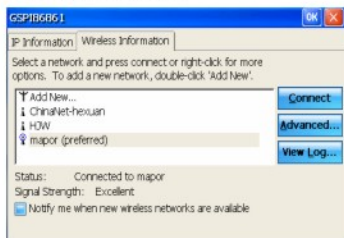


Fig. 2.3.3

### 【Prompt】

The status icon of the connected wireless network turns into [ ]. The word “preferred” appears after the name of wireless network.

### 【Attention】

Click “OK” if no key needs to be input when selecting the identity verification of wireless network setup.

### 【Attention】

1. The WIFI connection icon at the lower right corner of the desktop indicates the connected status.
2. After the menu of wireless information indicating “connected”, please firstly confirm that the UMPC has obtained the proper IP Address distributed by the wireless router, and then enjoy the wireless net surfing.
3. “169……” refers to the error IP Address which means the WIFI is not connected to the wireless network.

## 2. 4 Achieving the computer synchronization through Microsoft ActiveSync

### What is Microsoft ActiveSync?

Microsoft ActiveSync is the latest synchronization software of the device based on Windows Mobile. ActiveSync provides the favorable synchronization experience available at all times between the personal computer based on Windows & reg and Microsoft Outlook. ActiveSync may serve as the gateway between the PC based on Windows and device based on Windows Mobile, so as to enable the user to transmit the Outlook information, Office files, pictures, music, video files, and applications between the PC and the device. Except synchronizing with the desk computer, ActiveSync can also directly synchronizes with Microsoft Exchange Server 2003, so as to enable the user to obtain the latest Email, calendar data, tasks, and contact information even when he/she is not operating the PC.

2.3.4. Click the “IP Information” button after the status of WIFI indicating “connected”. See Fig. 2.3.4 (numbers in the figure are for reference only).

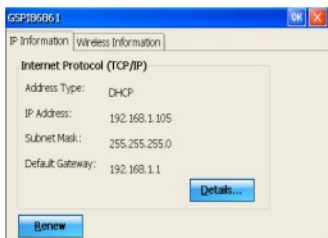


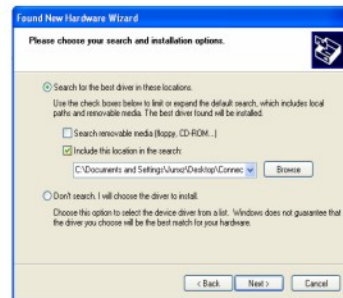
Fig. 2.3.4

## 2.4.1 Installation of Microsoft ActiveSync

1. Start up the computer and UMPC
2. Pls download WP-C700 “USB driver” file in our website: [www.mapor.net](http://www.mapor.net), and extract this file.

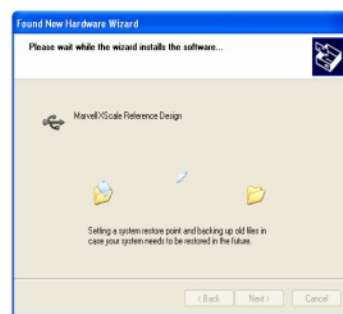
3. Use the USB connection cable to connect the computer and UMPC. Select “Install from a list or specific location” and click “Next”.

4. Select “Include this location in the search” and click “Next”.



5. Click “Browse” dialog box, unfold the item “removable disk” and select “usb driver”. Click “OK” and go to “Next”.

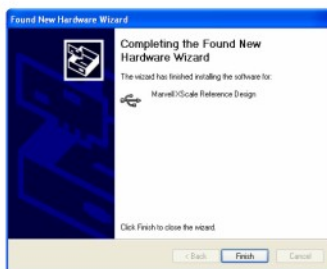
6. The computer is installing the software, please wait for several minutes



7. A dialog box pops up on the screen; please select "Continue Anyway".



8. The installation will be finished within several minutes. Click "Finish".

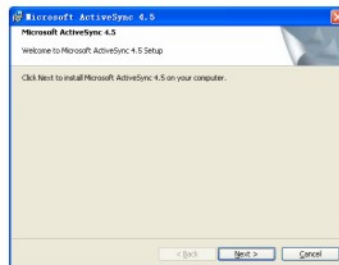


9. Pls download "ActiveSync 4.5" file in Microsoft's website.

11. Double click the program "ActiveSyncsetupen".



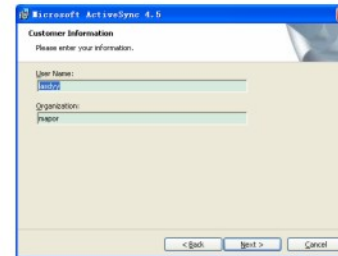
12. Select "Next".



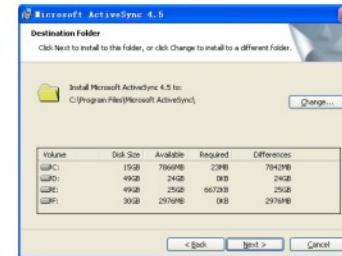
13. Select "I accept the terms in the license agreement" and click "Next".



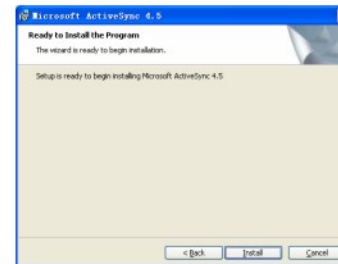
14. Click "Next" in the dialog box of "Customer Information".



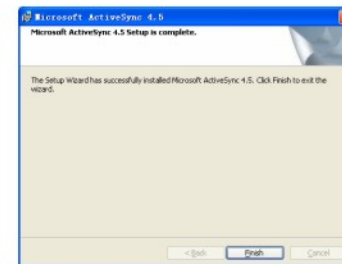
15. Select a location for installing the software in the target folder, or directly click "Next".





16. Click "Install".

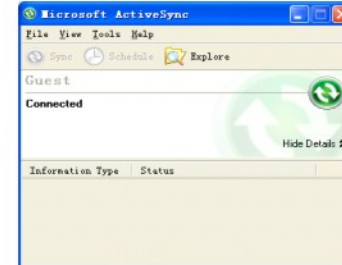


17. After several minutes, click "Finish".



18. The synchronization icon  appears at the lower right corner of the computer screen.

19. Restart the computer. After the computer being connected to the UMPC, the synchronization icon turns into a green icon . And then the synchronization dialog box pops up.



20. Click "Explore" to browse contents of the UMPC.

21. The user may also double click "Mobile Device" in "My Computer" to browse contents of the UMPC.



Mobile Device

## 3. Normal Malfunction and Maintenance of UMPC

In case of any malfunction of the WP-C700 UMPC, please go through the following inspections. If the problem can not be solved, please contact the customer service center of the company.

Malfunction	Reason	Solution
The UMPC can not be started up.	Low battery power	Supply power to system and charge the battery through the external power
The power is cut off	Low battery power	Supply power to system and charge the battery through the external power
No display / indistinct display	The backlight has been automatically turned off	Touch the touch screen.
	The system enters into hibernation	Press Power button
No sound when playing audio or video files	Low volume	Increase the volume
	Poor headphone contact	Properly insert the headphone
WIFI can not connect the wireless network		1. Check whether the current wireless network is available 2. Check whether the network key is consistent with the current wireless network setup 3. Check whether the network verification on the current menu of wireless network properties is consistent with the setup of the current wireless router
WIFI has connected to the wireless network, but the Internet can not be accessed		1. Check whether the UMPC has obtained the IP address distributed by the current wireless router 2. Delete all preferred networks in the network list and reconnect the target network 3. Press and hold the Power button to shut down the UMPC, and then restart it

### Maintenance of WP-C700 UMPC

With proper maintenance, WP-C700 UMPC will be a portable network expert, and partner for commercial business and entertainment. Please maintain the UMPC as per the following methods to ensure the normal operation of WP-C700 UMPC.

**Screen protection:** Pressing the touch screen may damage the screen. Please moisten a soft cloth by a little professional glass cleanser and gently wipe the screen. Do not directly spray the cleanser onto the screen.

#### 【Attention】

Please clean the touch screen after shutting down the WP-C700 UMPC.

Do not drop the UMPC: Dropping or impact may damage the precise parts of the UMPC, such as the display.

#### 【Attention】

Any damages caused by accident are excluded from the warranty scope.

Do not use the UMPC under the following conditions: rapidly changing temperature, high temperature (above 40), low temperature (below 0), high voltage, dusty condition, static interference, and damp condition. Keep the UMPC away from the corrosive liquid or any kind of liquid.

**Avoid radiation interference:** The radiation of other electronic devices may interfere with the display of the UMPC screen. Removing the interference source can recover the normal display of the screen.

#### 【Attention】

For air transportation, in the case of security check, it is suggested that the host shall be subject to the X-ray inspection system together with the luggage, so as to avoid any damages to the system data of host which caused by magnetic head detector or magnetic bar. The company will not be liable for any data loss thereof.

**Avoid the direct strong light:** Do not directly expose the WP-C700 UMPC under the strong light or ultraviolet radiation, so as to prolong the service life.

# 4. Product summary

## Features

1. Adopt Marvell PXA303 processor which has powerful function and ultra low energy consumption;
2. Adopt Win CE 6.0 operating system which can provide powerful third-party software assistance;
3. Unique and novel appearance, portable and fashionable UMPC;
4. 7" display, the same size as a book, provides this handy UMPC;
5. Support WIFI wireless net surfing;
6. Support video and audio playing, Email receipt and delivery, document processing etc;

## Functions

1. Support WIFI wireless network, internet experience, website browsing, Email receipt and delivery, real-time communication, MSN online chatting, online games, network television;
2. 800\*480 display resolution which can realize full-screen website browse;
3. Support browsing and editing of office software, such as WORD, EXCEL, PPT, PDF, TXT etc.
4. Support USB-OTG which can directly play the video and audio documents stored in the digital recorder, digital camera, and MP4/MP3;
5. Support various games.

## Specifications

Item	Content	Description
Basic parameter	Model no. of UMPC	WP-C700
	CPU	Marvell PXA303 Processor
	Central frequency	XSCALE 624MHZ main frequency
	DDR-RAM	256MB (support 512MB)
	NAND FLASH	2GB (INAND support 16GB)
	Operating system	Win CE 6.0
	Network connection	Built-in wireless WiFi network card
	OFFICE	Support the reading and editing of office files (word, excel, and ppt), and support Adobe PDF reader
	Input method	Support soft keyboard input method (support hand writing)
	USB port	Extensible USB port
	Standard battery	Lithium polymer battery, 1700mAh/7.4V, more than 3 hours servicing time (depend on the detailed situation)
	Power adapter	Input voltage: AC 100V-240V, output voltage: DC 9V, current: 1.5A, frequency: 50-60Hz
	TF card	Capacity of TF card: 1G; support 8G capacity, the capacity can be adjusted on demands
Appearance	Standard fittings	Lithium battery, power adapter, USB connecting cable, stereo headphone
	Appearance type	Notebook
	Color	Black + red/black + silver (the actual product shall prevail)
	Main screen	7" display, 800*480 pixel, touch screen
	Dimension	210*140*16.8mm
Entertainment	Weight	485g (include battery)
	Video playing	Support MPG, WMV, AVI, 3GP, MP4 video files
	Flash playing	Built-in Flash player, which supports the SWF files etc.
	Game	Built-in various games
	E-book	Built-in E-book reader which can read and edit txt files
	Picture browsing	Support the browsing of JPG, TIF, BMP, PNG, GIF files
	Speaker	Built-in 8 Ω/1.5W speaker
	MIC	Built-in Mic
	Headphone	Support Φ3.5mm stereo headphone
Network	IE browser	Built-in IE browser
	MSN	Support MSN wireless online chatting
	Email	Built-in outlook mailbox which can receive and deliver email
Data transmission	Network connection	Support Wifi which adopt 802.11b/g communication protocol
	USB synchronization	Mini USB port, installation of synchronization software, transmitting files between computer and UMPC
Expansibility	Expansion card	Support TF card expansion. Update the operating system and application software through TF card
Commerce	Calculator	Built-in electronic calculator which supports various mathematics and function calculation
Service condition	Working temperature	0℃~40℃
	Storage temperature	-20℃~40℃
	Working humidity	45%~80% RH
	Storage humidity	30%~90% RH
	Air pressure	86KPa~106 Kpa



**Caution :**

Changes or modifications not expressly approved by the party responsible for compliance could void the user's authority to operate the equipment.

**Compliance statement:**

1: This device is verified to comply with Part 15 of the FCC Rules. Operation subject to the following two conditions: (1) this device may not cause harmful interference, and (2) this device must accept any interference received, including interference that may cause undesired operation.

2: This equipment has been tested and found to comply with the limits for a Class B digital device, pursuant to Part 15 of the FCC Rules. These limits are designed to provide reasonable protection against harmful interference in a residential installation. This equipment generates, uses and can radiate radio frequency energy and, if not installed and used in accordance with the instructions, may cause harmful interference to radio communications. However, there is no guarantee that interference will not occur in a particular installation. If this equipment does cause harmful interference to radio or television reception, which can be determined by turning the equipment off and on, the user is encouraged to try to correct the interference by one or more of the following measures:

- Reorient or relocate the receiving antenna.
- Increase the separation between the equipment and receiver.
- Connect the equipment into an outlet on a circuit different from that to which the receiver is connected.
- Consult the dealer or an experienced radio/TV technician for help.