



RADIOCONTROL 2/4 CHANNELS



Part Number	KOMPASS2	2-Channels Radiocontrol
	KOMPASS4	4-Channels Radiocontrol



Instructions for use

Description

The 2/4 channels radio-control units allow windlass or thrusters operation.

Technical Data

Transmitter	
Power supply	2 batteries 1.5V type AAA
Frequency	433.92MHz
Protection rating	IP66
Operative temperature	0 / +70 °C (32 / 158 °F)
Dimensions (mm)	52 x 98 x 26
Weight (g)	85
Receiver	
Power supply	from 10 to 30 V DC
Frequency	433.92MHz
Protection rating	IP65
Operative temperature	0 / +70 °C (32 / 158 °F)
Dimensions (mm)	150 x 57 x 32
Weight (g)	100
Maximum load for every output at 30Vdc	3A

* excluding cable connection zone



Warning

CONNECT ONLY TO A DC POWER SUPPLY.

General Notes

The 2/4 channels radio-control must be used solely for the purposes described herein. Any other use is to be considered improper. Any tampering with the instrument will result in immediate voiding of the warranty.

Components

The package contains:

- 2 or 4 channels radio control unit (transmitter and receiver are already programmed in order to work together). Transmitter is already supplied with 1.5V AAA alkaline batteries.
- Adhesive label for thrusters and windlass function
- Support kit for the transmitter and 4 screws 3.5x13mm for RX and TX fastening.
- Instructions for use

In case of metallic walls or any obstacle to radio signal, it is possible to buy the optional external antenna (part number RA-KOMPASS), that is not included in the packaging; please refer to the manual for connections. It's not possible to use external antennas different from the one that is indicated in this manual

Installation

(see connection diagram)



Warning

ALWAYS DISCONNECT THE BATTERY PRIOR THE INSTALLATION.

- If possible mount the receiver a long way from big metal masses or electric motor or windlass.
- For the electric connections see the wiring diagram
- Insert a fuse of 3A on every relays common terminal (contacts n°3 and n°8);
- After connection, check that all work properly;
- Place the adhesive label on the transmitter according to the desired function (windlass or thruster).

Transmitter's Functioning

- Press ON button for about 2 seconds. The intermittent led turns on the transmitter;
- The led blinks slowly whenever the transmitter isn't transmitting, and it is turned on steady when any operation button is pressed;
- Whenever the button is released operation stops and led blinks again;
- Passing from one button to the opposite one (Up ? Down or Left ? Right) has a standard 1.5 sec. delay; simultaneous use of non opposite buttons is allowed (Up+Left, Up+Right, Down+Left, Down+Right in 4 channels radio control unit);
- Transmitter automatically turns off 120 seconds after the last command has been given;

Receiver's functioning

- Receiver is supplied with 2/4 relays outputs with one/two common contacts (Please check wiring diagram); common contact must be connected to positive or negative pole, according to the polarity of the load connected;
- In order to avoid overload due to short circuit, put in a 3 A fuse.
- When you turn on the receiver, the green led LINE turns on and after 1 sec. the red led for programming turns on as well.
- The red led keeps turned on for about 15 sec., during this time the receiver is enabled to receive a new transmitter's code and to memorize it. It is possible to store up to 5 transmitters at the same time; whenever more than 5 transmitters are memorized, the receiver accepts the latest code cancelling the first code received. When the red led is turned off you cannot make any TX memorizing procedure;
- The pressure of one button on the transmitter turns on the corresponding yellow led on the receiver and the operating of the output that is concerned;

Programming Procedure

- After powering the receiver when the red led is turned on steady follow these steps:
 1. Turn the new transmitter on, pressing the button ON;
 2. Keep the button UP pressed (it is on the left for the 2 channels version, or at the bottom on the left for the 4 channels version);
 3. Press the button PROGR on the receiver;
 4. Release the button UP of the transmitter;
 5. If the code has been recognized the led blinks in succession four times, then it turns off in order to confirm that the new transmitter has been memorized;
 6. Verify the correct functioning of the new transmitter ;
- In order to add a new transmitter to a device that you already use, turn the receiver on and follow this procedure:
- Press and keep pressed the button PROG on the receiver as long as the red led turns on, then release it.
- Repeat the procedure starting from step 1

Battery replacement

- Unscrew the 6 screws on the transmitter's back and take the rear part of the box away;
- Replace the batteries employing exclusively 1.5V AAA batteries. Pay attention in respecting polarity; reversing batteries doesn't damage the transmitter, but stops its functioning;
- Position the rear cover and screw the 6 closing screws.

Connecting the external antenna

- Make a 5 mm hole in the lower part of the receiver (on the right side of the hole of the connection cable) as shown in the picture 1;
- Open the receiver and remove the internal antenna from the terminal board;
- Run the cable of the external antenna in the hole already made and connect it to the terminal board: the cable shield must be connected to the right contact, and the radio signal wire to the left contact (Figure 2);
- Close the receiver and fix the antenna to the boat loom employing the flat washer and the nut given in equipment.

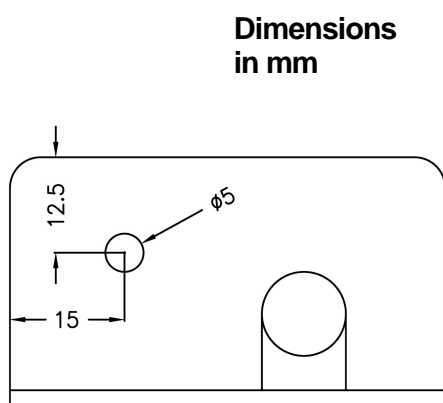


Fig.1

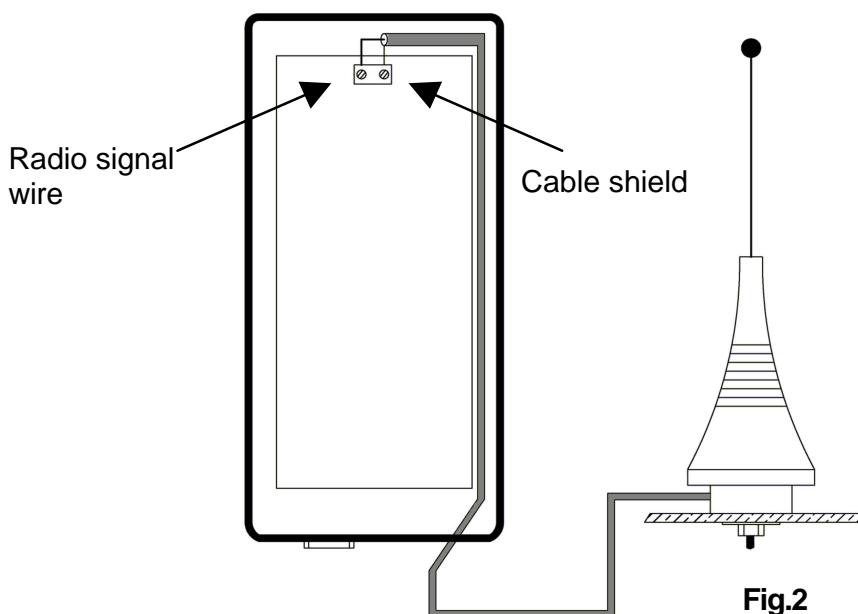
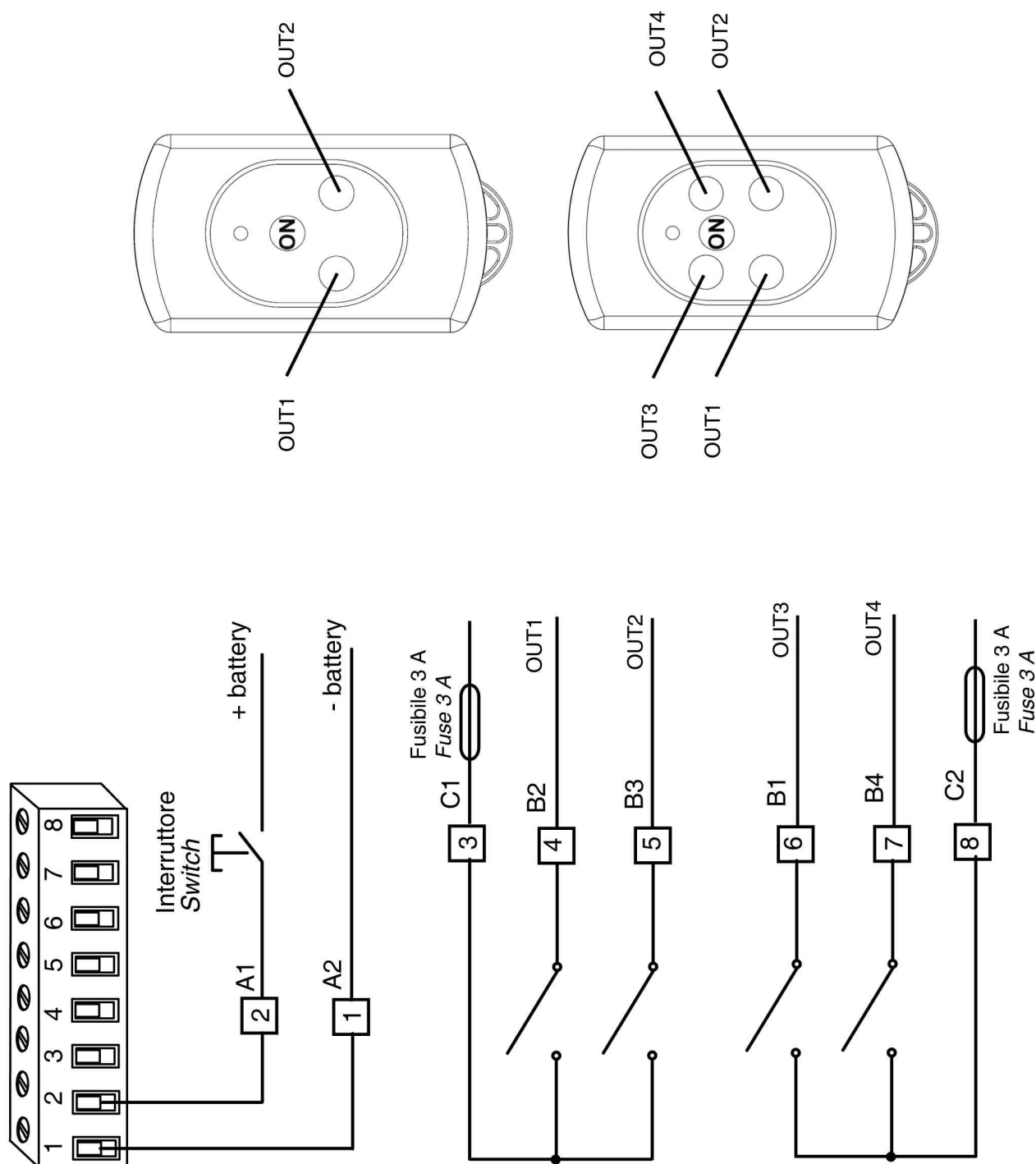


Fig.2

ELECTRICAL DRAWING



Warranty

We guarantee our products from manufacturing defects for 2 years from the purchase date (purchase ticket or any other purchase proof will be requested). Guarantee does not include damages and breakage during the transport, damages and breakage due to faulty installation or improper use. Warranty is no longer valid when repairs or servicing have been made by unauthorized people or made with spare parts which are not original. Warranty does not include the complete replacement of the goods and refers exclusively to the replace of faulty pieces and necessary labour. It does not include transfer or transport expenses. The Customer will not ask for expenses refund.

FCC Certification

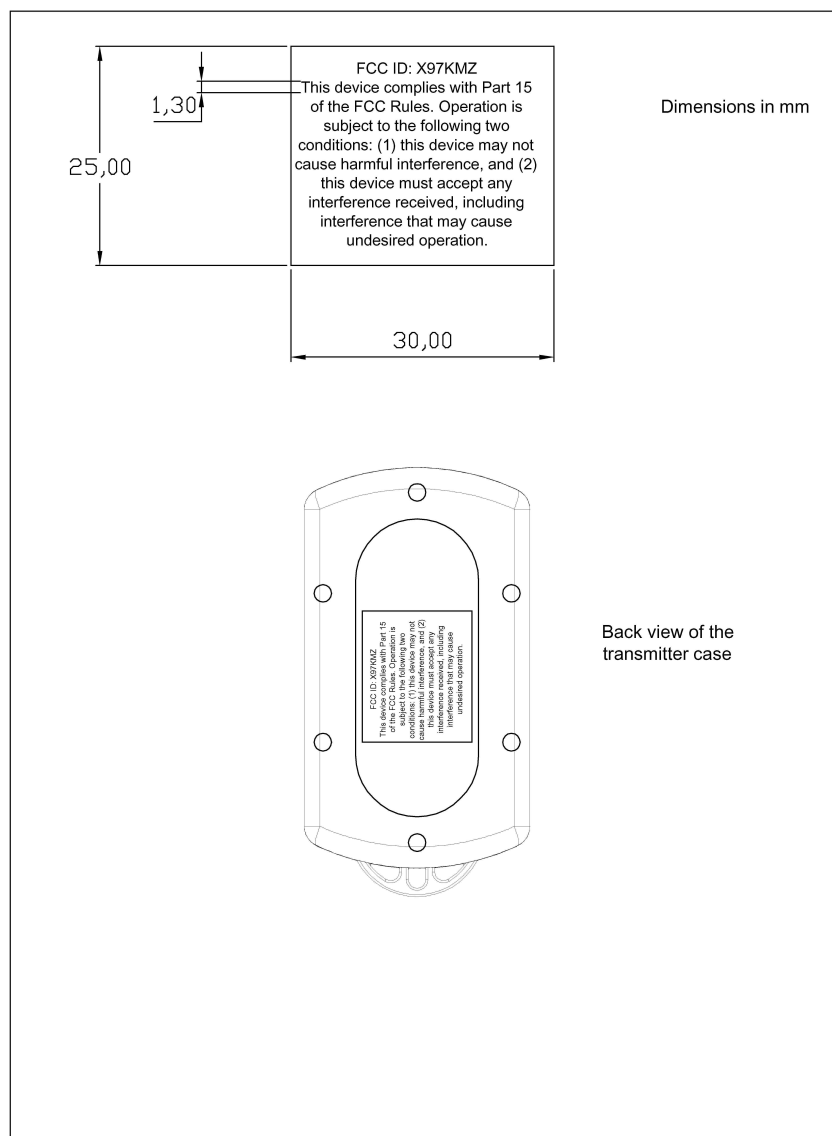
The user must not remove and modify any part of the module included antenna that is already fixed to the module in the proper position.

Changes or modifications not expressly approved by the party responsible for compliance could void the user's authority to operate the equipment

In any case the antenna must not be modified by the user: only authorized personnel is allowed to service the antenna.

This device complies with Part 15 of the FCC Rules. Operation is subject to the following two conditions: (1) this device may not cause harmful interference, and (2) this device must accept any interference received, including interference that may cause undesired operation.

FCC ID adhesive label is applied on the rear part of the transmitter as shown in the picture.





MZ ELECTRONIC S.R.L.

e-mail: info@mzelectronic.com

web: www.mzelectronic.com