

086 01 0482

FIRST WORDS BABY DOLL

INCLUDES 1 14INCH (35.6CM) DOLL, 1 SHIRT, 1 PAIR OF JEANS, 1 HEADBAND, 1 PAIR OF SHOES & 1 TECHNOLOGY BOOK.

6 PIECES

AGES 3+

REQUIRES 3 AAA BATTERIES, INCLUDED.

FIBER CONTENT:
ALL NEW MATERIALS.
POLYESTER FIBER & PLASTIC BEADS.
OH PA941, PA PA941(HK), MA-0538.

WARNING: ALL RUBBERBANDS, PLASTIC AND WIRE TIES AS WELL AS TAGS ARE NOT PART OF THIS TOY, AND SHOULD BE DISCARDED FOR YOUR CHILD'S SAFETY.

FCC ID: X8V68038

This device complies with part 15 of the FCC Rules.

Operation is subject to the following two conditions :

- (1) This device may not cause harmful interference, and
- (2) this device must accept any interference received, including interference that may cause undesired operation.

- PRESS MY LEFT HAND AND I WILL LAUGH AND BE READY TO READ MY BOOK.
- WAVE MY RIGHT HAND OVER THE STAR ON EACH PAGE AND I WILL TELL YOU WHAT I SEE.

68038 / 78038



F16841305-01/10

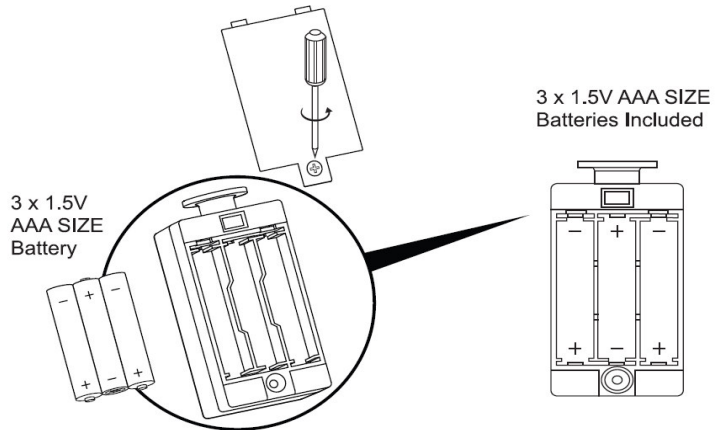
086 01 0482

Distributed by Target Corporation
Minneapolis, MN 55403
Made in China
©2010 Target Brands, Inc.
All Rights Reserved
Shop Target.com



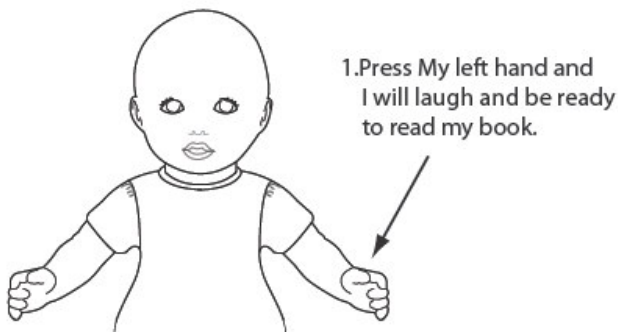
WARNING:

**CHOKING HAZARD - Small parts.
Not For Children Under 3 Years.**



BATTERY CHANGE INSTRUCTIONS:

- The batteries are to be replaced by an adult using screwdriver.
- Carefully unscrew battery cover & replace batteries as shown. Replace cover & screw for your child's safety.
- Do not mix alkaline, standard (carbon-zinc), or rechargeable (nickel-cadmium) batteries.
- Non-rechargeable batteries are not to be recharged.
- Rechargeable batteries are to be removed from the toy before being charged.
- Rechargeable batteries are only to be charged under adult supervision.
- Only batteries of the same or equivalent type as recommended are to be used.
- The supply terminals are not to be short-circuited.
- The polarity of the batteries or rechargeable batteries must be respected.
- Do not mix new and used batteries.
- Exhausted batteries are to be removed from the toy.



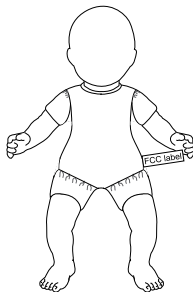
2. Wave My right hand over the star on each page and I will tell you what I see.



FCC ID: X8V68038

Operating Temperature Range: 0°C to 50°C

FCC Label Location: Doll Shell



This device complies with Part 15 of the FCC Rules. Operation is subject to the following two conditions: (1) this device may not cause harmful interference, and (2) this device must accept any interference received, including interference that may cause undesired operation.

Caution: changes or modifications not expressly approved by the party responsible for compliance could void the user's authority to operate the equipment.

NOTE: This equipment has been tested and found to comply with the limits for a Class B digital device, pursuant to Part 15 of the FCC Rules. These limits are designed to provide reasonable protection against harmful interference in a residential installation. This equipment generates, uses and can radiate radio frequency energy and, if not installed and used in accordance with the instructions, may cause harmful interference to radio communications. However, there is no guarantee that interference will not occur in a particular installation. If this equipment does cause harmful interference to radio or television reception, which can be determined by turning the equipment off and on, the user is encouraged to try to correct the interference by one or more of the following measures:

- Reorient or relocate the receiving antenna.
- Increase the separation between the equipment and receiver.
- Connect the equipment into an outlet on a circuit different from that to which the receiver is connected.
- Consult the dealer or an experienced radio/TV technician for help.