

## FCC Test Report

### (TR-1003-003-01)

**Applicant** : Hahdu Inc

**Address** : New Industrial Zone, QiuFu Road, Dalang Town, Dongguan City, Guangdong Province, China

**Manufacturer** : Hahdu Inc

**Address** : New Industrial Zone, QiuFu Road, Dalang Town, Dongguan City, Guangdong Province, China

**Product Name** : Urja remote control egg vibe rechargeable waterproof

**Trademark** : None

**Model(s)** : 7100028-TX

**Standard(s)** : FCC Part 15 Subpart C

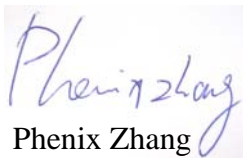

**Test Result** : Pass

**Date of Test** : Mar 10, 2010 to Mar 15, 2010

**Report issued Dated** : Mar 15, 2010

The report shall not be reproduced except in full, without the written approval of the TDK EMC Center.

The results in this report apply only to the sample(s) tested. The production units are required to conform to the initial sample as received when the units are placed in the market.

Responsible Engineer	:		Approved by	:	
		Phenix Zhang	Technical manager		CHAN king-chui
Date	:	2010.03.15	Date	:	2010.03.15

## Table of Contents

Description	Page
1. Description of the Test Site .....	3
1.1 Test Site Location: .....	3
1.2 Site Registration .....	3
1.3 Test Scope.....	3
2. Description of the Tested Samples .....	4
2.1 Customer Information .....	4
2.2 Identification of EUT .....	4
2.3 Spec of EUT .....	4
2.4 Test Standards List.....	4
3. Test Specifications .....	5
3.1 Standard(s) Used .....	5
3.2 Deviations from the Test Specification .....	5
4. Test Result.....	6
4.1 Antenna Requirement.....	6
4.2 Conducted Emission (mains).....	7
4.3 Radiated Emission Test.....	8
4.4 20dB Occupied Bandwidth.....	13
4.5 Release Time Measurement.....	15
5. FCC ID Label .....	17
6. Test Setup .....	18
6.1 Photographs of the Test Configuration .....	18
6.2 Photographs of the EUT .....	19
7. Equipment List.....	22
8. Test Uncertainty .....	23
9. Appendix .....	23
9.1 Confirmation of Compliance within the Limits .....	23

## 1. Description of the Test Site

### 1.1 Test Site Location:

Laboratory	:	TDK South China EMC Center SAE Technologies Development (Dongguan) Co., Ltd. Changan Branch
Address	:	Zhenan Hi-tech Industrial Park, Dongguan City, Guangdong Province, China
Phone no.	:	(86)-769-8564-4678
Fax no.	:	(86)-769-8564-4499
Email	:	<a href="mailto:emc@cn.tdk.com">emc@cn.tdk.com</a>

### 1.2 Site Registration

VCCI (September, 2008)	:	Reg. No. R-2205, C-2392
FCC site registration (July, 2008)	:	Reg. No. 732901
IC registration	:	Reg. No. 7993
EMCC (September, 2008)	:	Reg. No. NAR/tl-060330

### 1.3 Test Scope

EMC and RF testing according to national / international standards

## 2. Description of the Tested Samples

### 2.1 Customer Information

Customer : Hahdu Inc

Address : New Industrial Zone, QiuFu Road, Dalang  
Town,Dongguan City,Guangdong Province,China

Phone no. : +86-769-83132750

Fax no. : +86-769-83132749

### 2.2 Identification of EUT

Trademark : None

Model(s) No. : 7100028-TX

Serial No. : None

### 2.3 Spec of EUT

Description of EUT : This product is a remote controller with 315MHz.

Description of Antenna : fixed permanent antenna, 1.0dBi

Power Supply : Internal battery 12V DC

Operation Frequency : 315MHz

Number of Channels : 1

Bandwidth : 450kHz

Type of Modulation : ASK

### 2.4 Test Standards List

FCC Part 15 (2008)

American national standard for methods of measurement of radio noise emissions from low-voltage electrical and electronic equipment in the range of 9 kHz to 40GHz.

### 3. Test Specifications

#### 3.1 Standard(s) Used

FCC Rules	Description Of Test	Result
15.203	Antenna Requirement	Pass
15.207	Conducted Emission	N/A
15.231(b)	Radiated Emission	Pass
15.231(c)	20dB Bandwidth	Pass
15.231(a)(1)	Release Time	Pass

#### 3.2 Deviations from the Test Specification

N/A

## **4. Test Result**

### **4.1 Antenna Requirement**

#### **4.1.1 Standard Applicable**

Section 15.203:

An intentional radiator shall be designed to ensure that no antenna other than that furnished by the responsible party shall be used with the device. The use of a permanently attached antenna or of an antenna that uses a unique coupling to the intentional radiator shall be considered sufficient to comply with the provisions of this Section. The manufacturer may design the unit so that a broken antenna can be replaced by the user, but the use of a standard antenna James or electrical connector is prohibited.

#### **4.1.2 Antenna Connected Construction**

The antenna connector is designed with permanent attachment and no consideration of replacement.

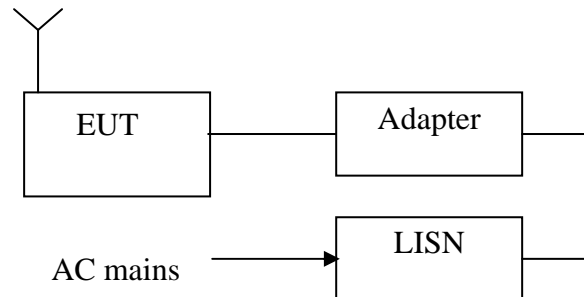
Transmitter antenna of directional gain is 1.0dBi.

## 4.2 Conducted Emission (mains)

### 4.2.1 Test Summary

Test Room	: Shielded Room
Power Source	: AC 120V / 60Hz
Standards:	: FCC Part15 B : 2008
EUT Type	: Table Top
EUT configuration	: EUT's highest possible emission level

### 4.2.2 Block diagram of test setup



### 4.2.3 Measurement method

The EUT along with its peripherals were placed on a 1.0m (W) x 1.5m(L) and 0.8m in height wooden table and the EUT was adjusted to maintain a 0.4m space from a vertical reference plane. The EUT was connected to power mains through a Artificial Mains Network(AMN), which provided 50 ohm coupling impedance for measuring instrument and the chassis ground was bounded to the horizontal ground plane of shielded room.

The excess power cable between the EUT and the AMN was bundled. All connecting cables of EUT and peripherals were moved to find the maximum emission.

### 4.2.4. Result

N/A

**Because the power of EUT is with internal battery, this test item is not applicable.**

### 4.3 Radiated Emission Test

#### 4.3.1 Limit

a. Radiation emission measurement limits according to FCC Part 15 Section 15.231(b).

Fundamental Frequency (MHz)	Field Strength of Fundamental (microvolts/meter)	Field Strength of Spurious Emissions (microvolts/meter)
40.66-40.70	2250	225
70-130	1250	125
130-174	1250 to 3750 **	125 to 375 **
174-260	3750	375
260-470	3750 to 12500 **	375 to 1250 **
Above 470	12500	1250
** linear interpolations		

[Where F is the frequency in MHz, the formulas for calculating the maximum permitted fundamental field strengths are as follows: for the band 130-174 MHz,  $\mu\text{V/m}$  at 3 meters =  $56.81818(F) - 6136.3636$ ; for the band 260-470 MHz,  $\mu\text{V/m}$  at 3 meters =  $41.6667(F) - 7083.3333$ . The maximum permitted unwanted emission level is 20 dB below the maximum permitted fundamental level.]

b. Restricted band radiation emission measurement limits according to FCC part 15 Section 15.205 and Section 15.209.

#### 4.3.2 Block diagram of test setup

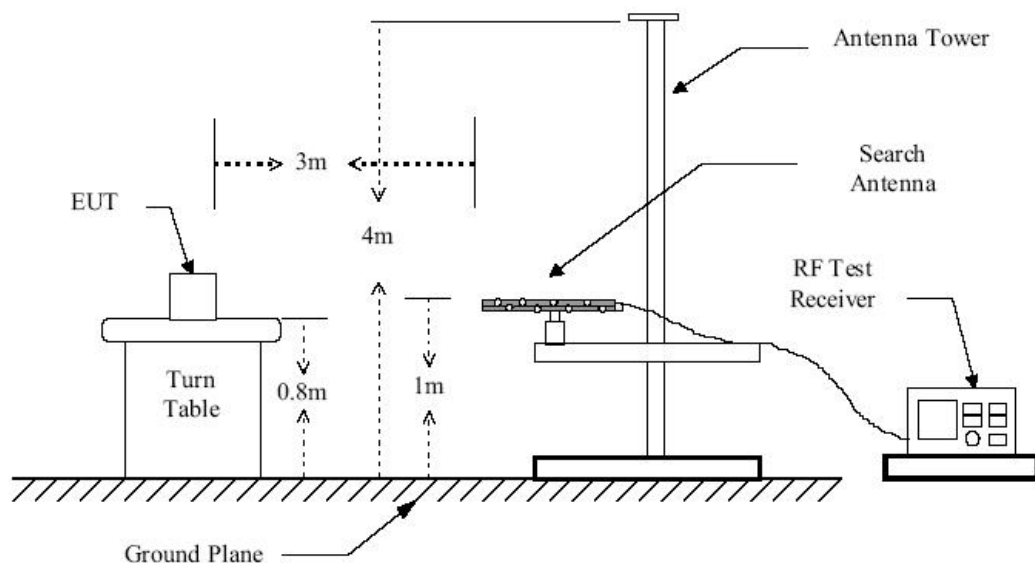


Figure 1 : Frequencies measured below 1 GHz configuration



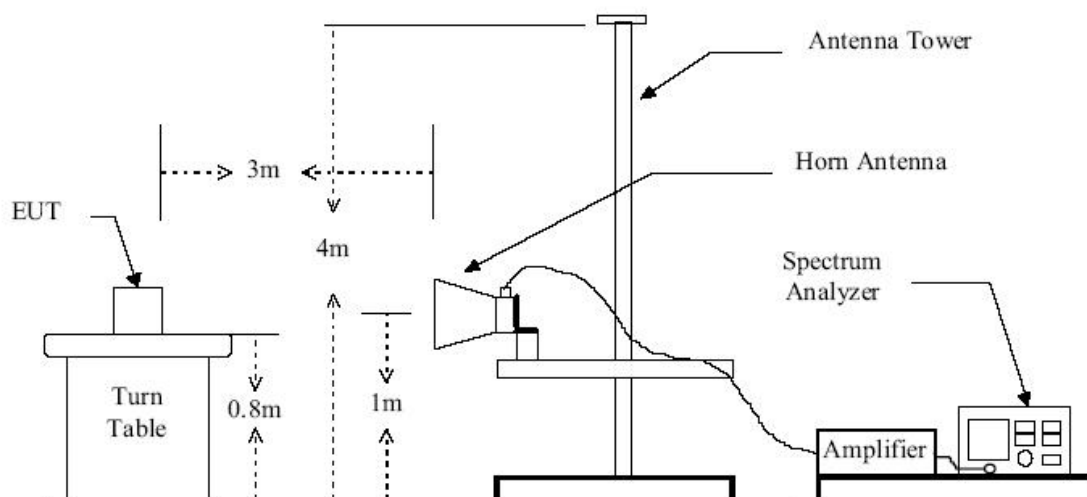


Figure 2 : Frequencies measured above 1 GHz configuration

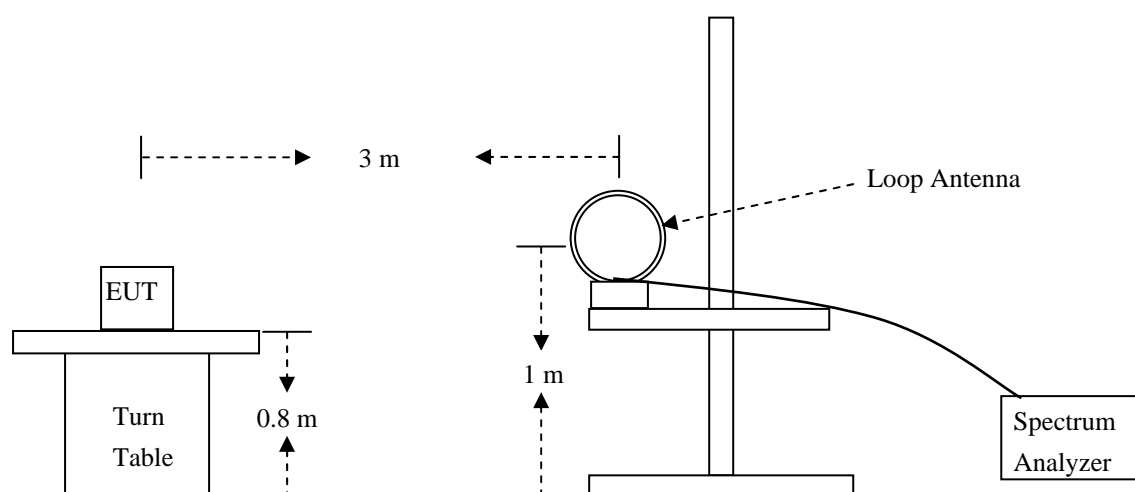


Figure 3: Frequencies measured below 30MHz configuration

#### 4.3.3 Measurement method

1. Configure the EUT according to ANSI C63.4.
2. The EUT was placed on the top of the turntable 0.8 meter above ground.
3. The phase center of the receiving antenna mounted on the top of a height-variable antenna tower was placed 3 meters far away from the turntable.
4. Power on the EUT and all the supporting units.
5. The turntable was rotated by 360 degrees to determine the position of the highest radiation.
6. The height of the broadband receiving antenna was varied between one meter and four meters above ground to find the maximum emission field strength of both horizontal and vertical polarization.
7. For each suspected emission, the antenna tower was scanned (from 1 M to 4 M) and then the turntable was rotated (from 0 degree to 360 degrees) to find the maximum reading.
8. Set the test-receiver system to Peak or CISPR quasi-peak Detect Function with specified bandwidth under Maximum Hold Mode.

#### 4.3.4. Result

##### Below 30MHz:

No further spurious emissions found between lowest internal used or generated frequency and 30 MHz.

##### 30M- 1GHz:

2010-03-12 15:00:34

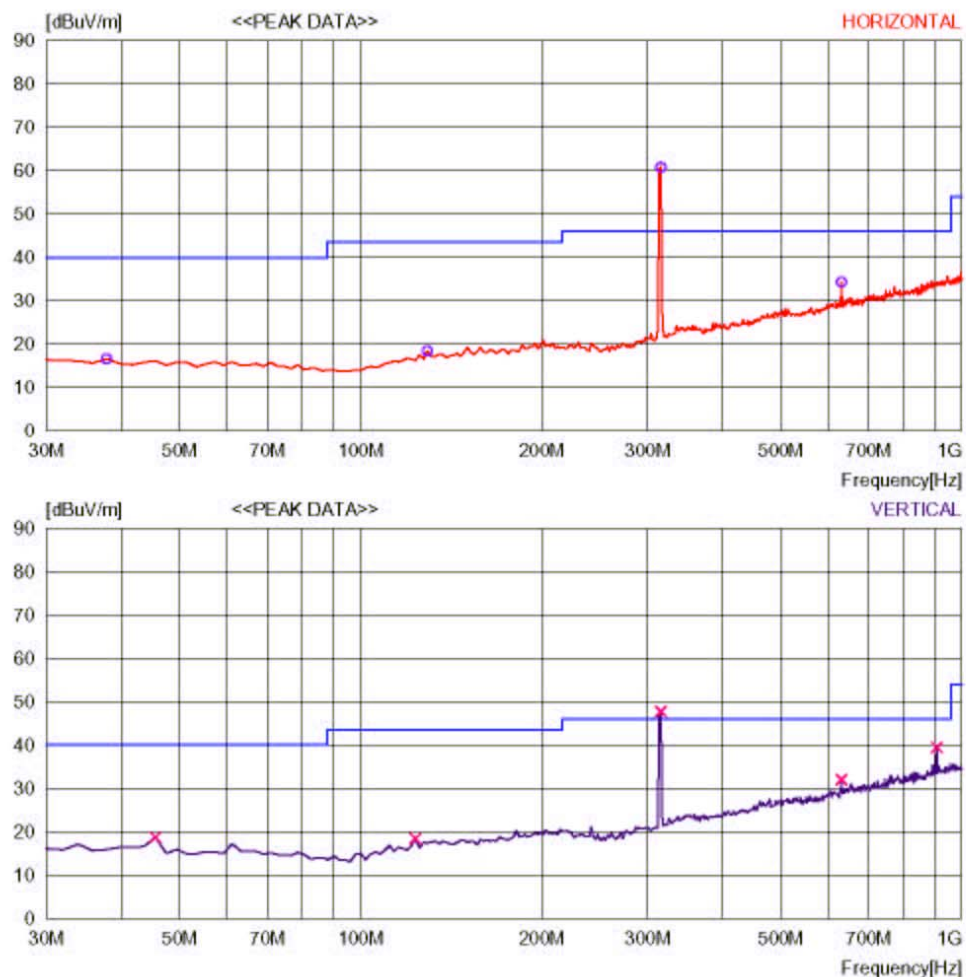
### RADIATED EMISSION

Date : 2010-03-12 15:00:11

Company	: Hahdu Inc	Document No.	:
Model Name	: 7100028-TX	Power Supply	: DC 12V(internal battery)
Product Name	:	Temp/Humi	: 23 Deg/ 55%RH
Test Condition	: TX mode	Operator	: Phenix

Memo : P/N:Urja remote control egg vibe rechargeable waterproof

LIMIT : FCC Part15 Class B(3m)/USA



2010-03-12 15:00:35

## RADIATED EMISSION

Date : 2010-03-12 15:00:11

Company	: Hahdu Inc	Document No.	:
Model Name	: 7100028-TX	Power Supply	: DC 12V(internal battery)
Product Name	:	Temp/Humi	: 23 Deg/ 55%RH
Test Condition	: TX mode	Operator	: Phenix

Memo : P/N:Urja remote control egg vibe rechargeable waterproof

LIMIT : FCC Part15 Class B(3m)/USA

No.	FREQ [MHz]	READING PEAK [dBuV]	ANT FACTOR [dB]	LOSS [dB]	GAIN [dB]	RESULT [dBuV/m]	LIMIT [dBuV/m]	MARGIN [dB]	ANTENNA [cm]	TABLE [DEG]
---- Horizontal ----										
1	37.776	30.1	11.3	6.9	31.7	16.6	40	23.4	200	0
2	129.138	31.0	11.3	7.7	31.6	18.4	43.5	25.1	200	87
3	315.752	69.0	14.4	8.7	31.3	60.8	75.6	14.8	100	123
4	630.662	35.4	20.4	9.9	31.4	34.3	55.6	21.3	200	318
---- Vertical ----										
5	45.551	32.4	11.1	6.9	31.7	18.7	40	21.3	100	354
6	123.307	31.4	11.0	7.6	31.6	18.4	43.5	25.1	100	4
7	315.752	55.9	14.4	8.7	31.3	47.7	75.6	27.9	200	250
8	630.662	33.1	20.4	9.9	31.4	32.0	55.6	23.6	100	192
9	908.641	36.4	23.3	10.7	31.0	39.4	46	6.6	400	188

### Above 1GHz:

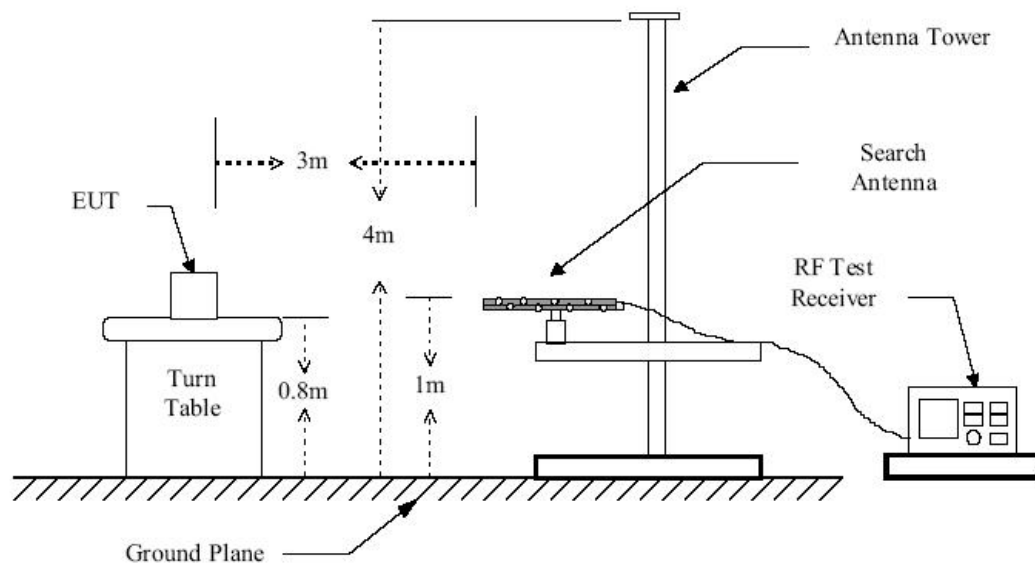
No further spurious emissions found between 1GHz and 4GHz.

#### 4.4 20dB Occupied Bandwidth

##### 4.4.1 Applicable Standard

According to section 15.231(c): The bandwidth of the emission shall be no wider than 0.25% of the center frequency for devices operating above 70 MHz and below 900 MHz. For devices operating above 900 MHz, the emission shall be no wider than 0.5% of the center frequency. Bandwidth is determined at the points 20 dB down from the modulated carrier..

##### 4.4.2 Block diagram of test setup



##### 4.4.3 Measurement method

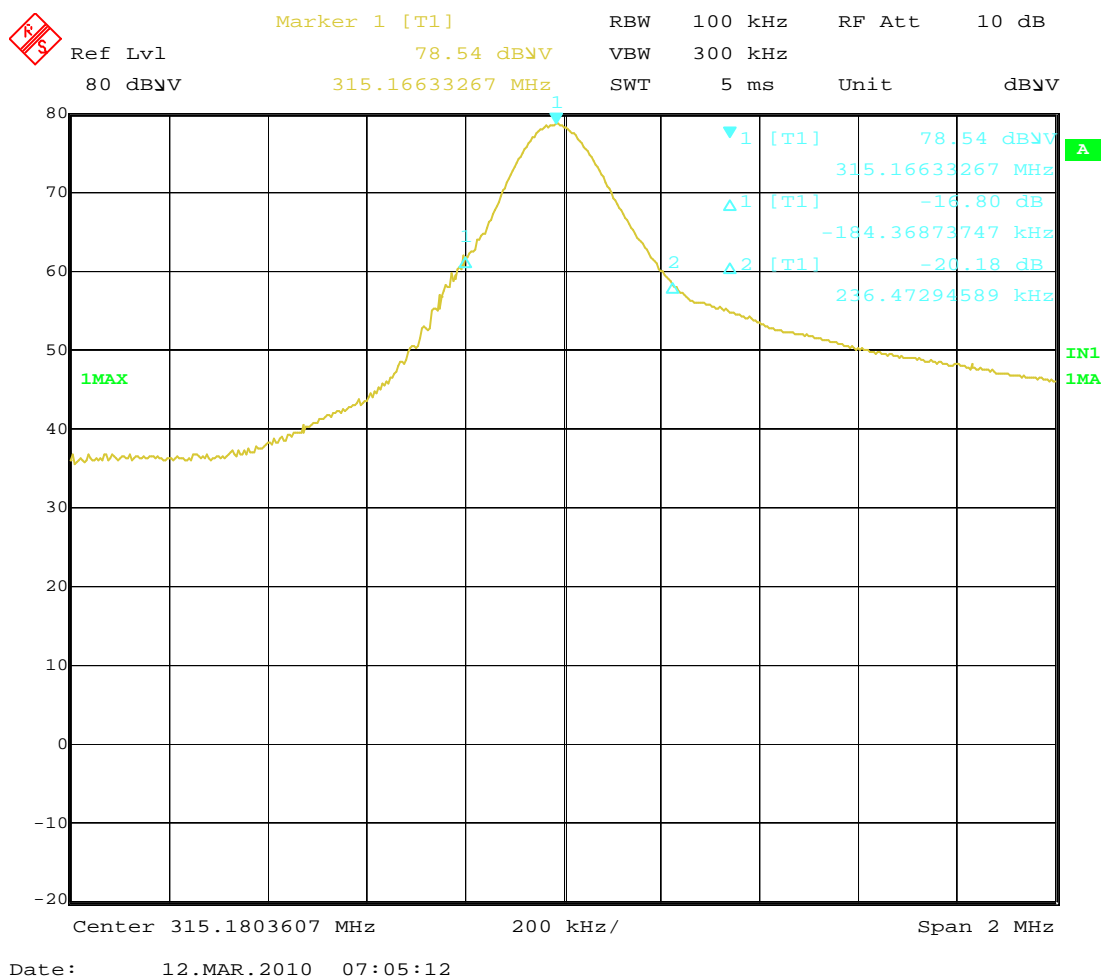
1. The EUT was placed on a turn table which is 0.8m above ground plane.
2. Set the spectrum analyzer as RBW=100 kHz, VBW=300 kHz, Span=2MHz, Sweep=auto.
3. Set Detector to Peak, Trace to Max Hold and Sweep Time is auto.
4. Mark the peak frequency and -20dB(upper and lower) frequency.

#### 4.4.4. Result

Temperature ( ): 22~23	EUT: Urja remote control egg vibe rechargeable waterproof
Humidity (%RH): 50~54	M/N: 7100028-TX
Barometric Pressure ( mbar ): 950~1000	Operation Condition: Tx Mode
Test data: Mar 12, 2010	Test engineer: Phenix

Frequency (MHz)	20dB Bandwidth (kHz)	Limits (kHz)
315	420.84	787.5

#### Test Plot:

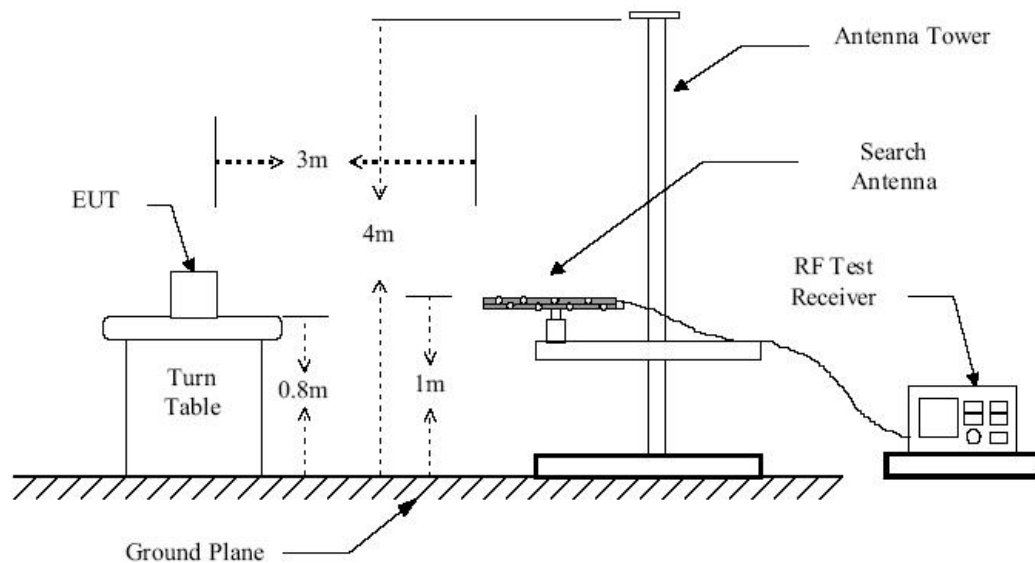


## 4.5 Release Time Measurement

### 4.5.1 Applicable Standard

According to section 15.231(a)(1): A manually operated transmitter shall employ a switch that will automatically deactivate the transmitter within not more than 5 seconds of being released.

### 4.5.2 Block diagram of test setup



### 4.5.3 Measurement method

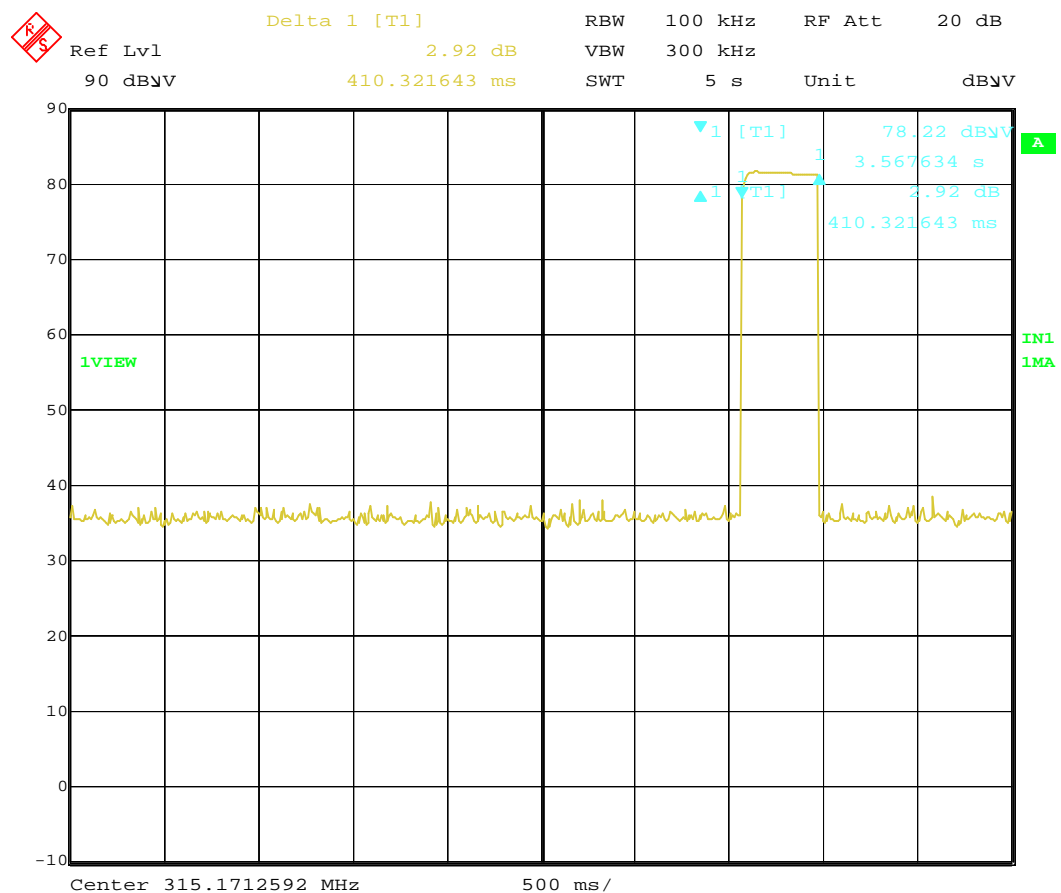
1. The EUT was placed on a turn table which is 0.8m above ground plane.
2. Set the spectrum analyzer Center Frequency = Fundamental Frequency, RBW=100kHz, VBW=300kHz, Span=0Hz, Sweep time=5 seconds.
3. set EUT as normal operation and press transmitter button.
4. set spectrum analyzer view, Delta Mark time.

#### 4.5.4. Result

Temperature ( ): 22~23	EUT: Urja remote control egg vibe rechargeable waterproof
Humidity (%RH): 50~54	M/N: 7100028-TX
Barometric Pressure ( mbar ): 950~1000	Operation Condition: Tx Mode
Test data: Mar 10, 2010	Test engineer: Phenix

Frequency (MHz)	Release time (ms)	Limits (s)
315	410	5

#### Test Plot:



Date: 10.MAR.2010 07:09:54

#### Comment:

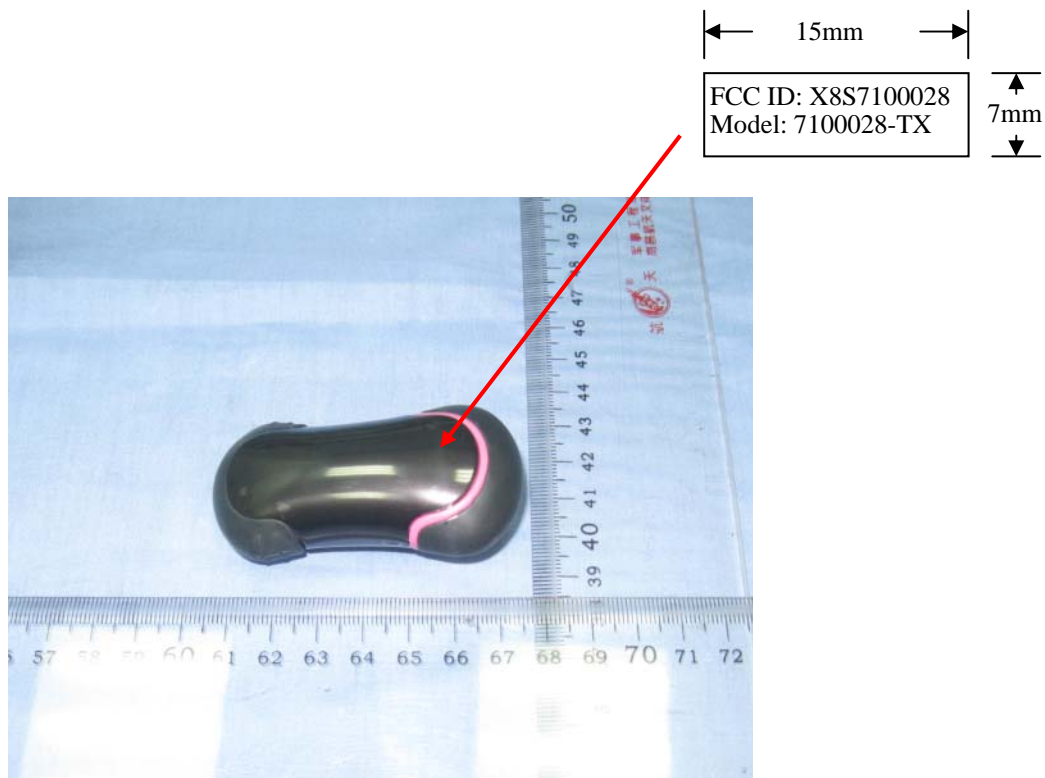
The method of calculation for release time:

1. Start: the tester press the button of TX, then the TX is transmitting. We can snatch the rise edge of pulse.
2. Stop: The RX received the signal, then it's working. At the moment, the tester loosens the button of TX. We can snatch the down edge of pulse.



## 5. FCC ID Label

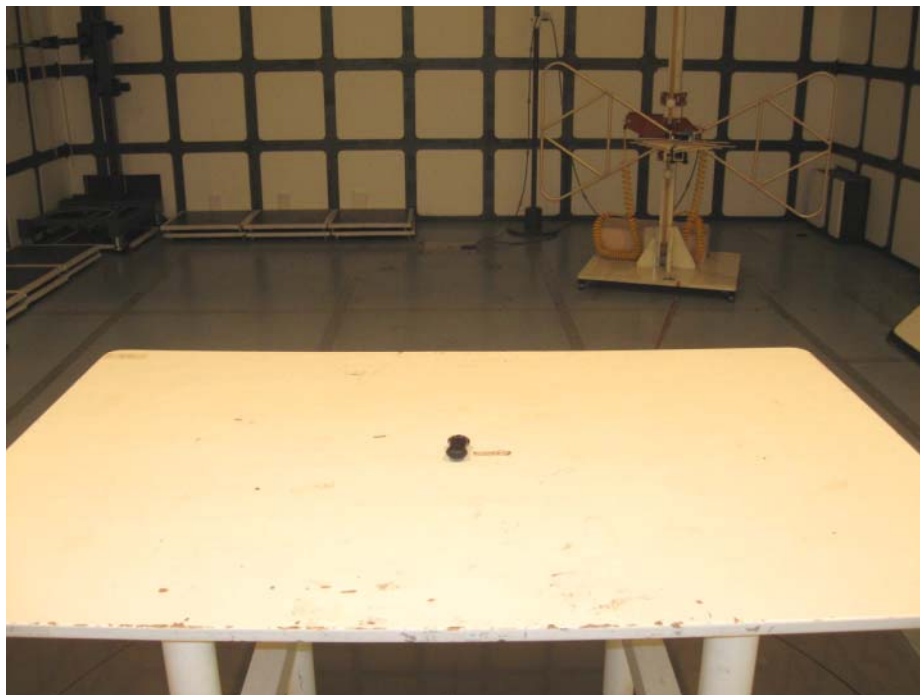
Mark Location:



## 6. Test Setup

### 6.1 Photographs of the Test Configuration

Radiated emission:



## 6.2 Photographs of the EUT



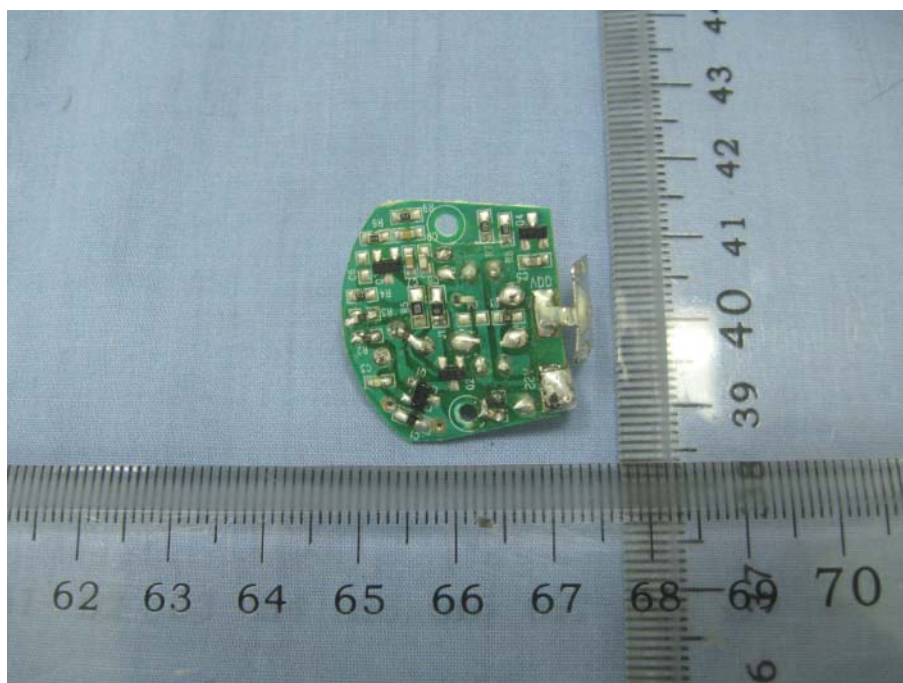
Enclosure of EUT



Enclosure of EUT

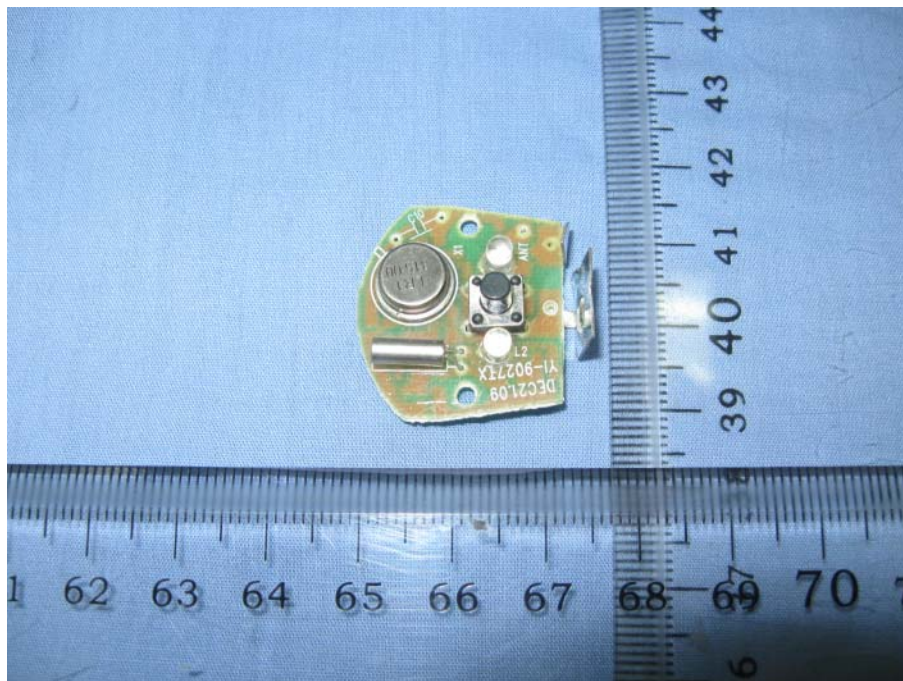


Internal Photo



PCB of EUT





PCB of EUT



Photo of Battery

## 7. Equipment List

No.	Equipment	Manufacturer	Model	Serial No.	Calibration Date
1	Precision Biconical Antenna	TDK Co.	PBA-2030	090500	2009-09-18
2	Precision Log Periodic Antenna	TDK Co.	PLP-3003	061001	2009-09-18
3	Hybrid Log Periodic Antenna	TDK	HLP-3003C	130174	2009-09-18
4	Horn antenna	TDK	HRN-0118	130186	2009-04-07
5	Attenuator 6 dB	Agilent	8491B	MY39260147	2009-09-18
6	Preamplifier	TDK Sonoma	310	242803	2009-04-07
7	Preamplifier	ELENA	EAU-3718 GXA	A070701	2009-04-07
8	EMI Receiver	Rohde & Schwarz	ESIB26	100234	2009-04-07
9	EMI Receiver	Rohde & Schwarz	ESCS30	100350	2009-04-07
10	Spectrum Analyzer	Agilent	E4403B	MY44210199	2009-04-07
11	Art. Mains Network	EMCO	3816/2	00044921	2009-04-07
12	Transient Limiter(10 dB)	Agilent	11947A	3107A03736	2009-04-07
13	Personal Computer	HP	DX2000MT	MXD4250FZM	N/A
14	Personal Computer	HP	DX2000MT	MXD4130B2N	N/A
15	Semi-Anechoic Chamber	TDK Co.	N/A	N/A	2009-04-07
16	Shielded Room	TDK Co.	N/A	N/A	N/A
17	Loop Antenna	EMCO	6502	9107-2440	2009-04-07

## 8. Test Uncertainty

Test	Range	Confidence Level	Calculated Uncertainty
Radiated emission(3m)	30-1000MHz	95%	4.3dB
Conducted emission	0.15-30MHz	95%	3.3dB

## 9. Appendix

### 9.1 Confirmation of Compliance within the Limits

#### 9.1.1 Method of calculating measurement result

Radiated Emission

For example the point of 45.551MHz, vertical, Page 12.

	Reading	+	Antenna factor	+	Cable loss	-	Gain	=	Result
Example	32.4	+	11.1	+	6.9	-	31.7	=	18.7