

Operating Description NP-3100K

- IEEE 802.11b/g

The WIFI is a modular form.

802.11 b	11, 5.5, 2, 1 Mbps
802.11g	54,48,36,18,9,6 Mbps

WIFI Antenna Type : An RF connected SMA Straight Plug Reverse connector and the maximum gain of the antennas is 2.0 dBi.

Using Wireless

Step 1. The driver is installed properly and look right in the taskbar tray window of a wireless network, wireless LAN utility Windows tray icon is created in order register.



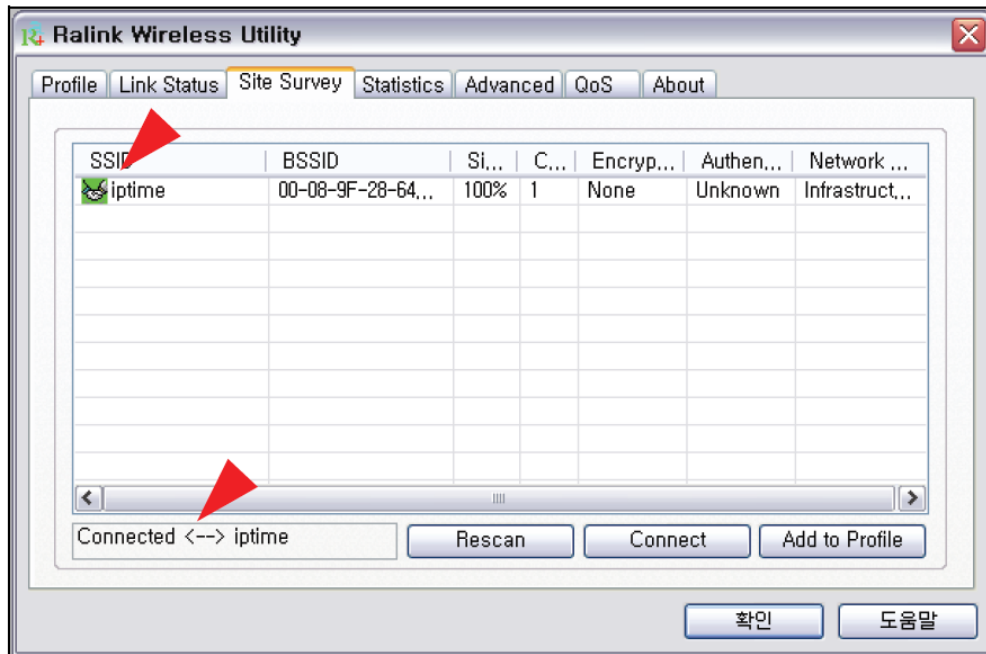
<Check your wireless network properties window tray>



<Wireless Utilities Windows tray, a registration confirmation>

Step 2. Using the wireless utility, a wireless router (or AP) is a way to connect to. Wireless LAN Utility icon in the taskbar, right-click and double. Or by right-clicking on the Wireless Utility icon, click the Launch Config Utilities.

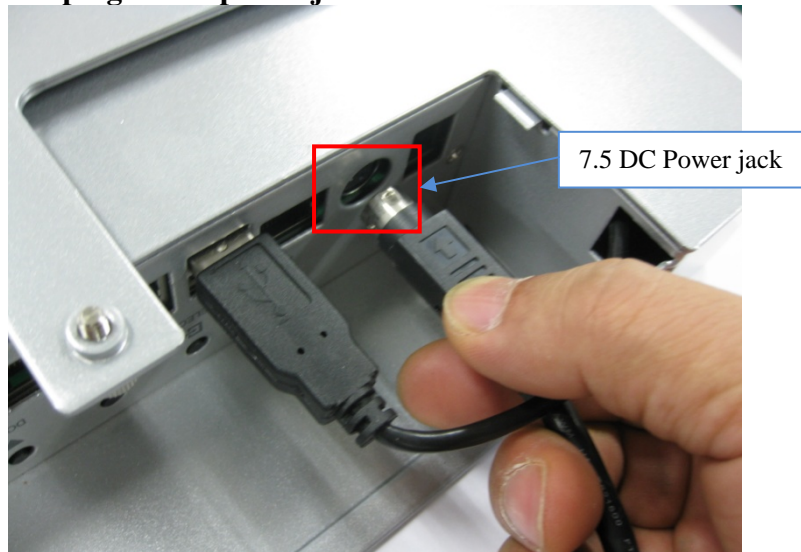
Step 4. As shown below, select your network name (SSID) that can be found in the attached.



Operating the system

8.1 Plugging the power cord with the adapter

8.2 Connect the DC plug to DC power jack



8.3 Turn On/Off the system

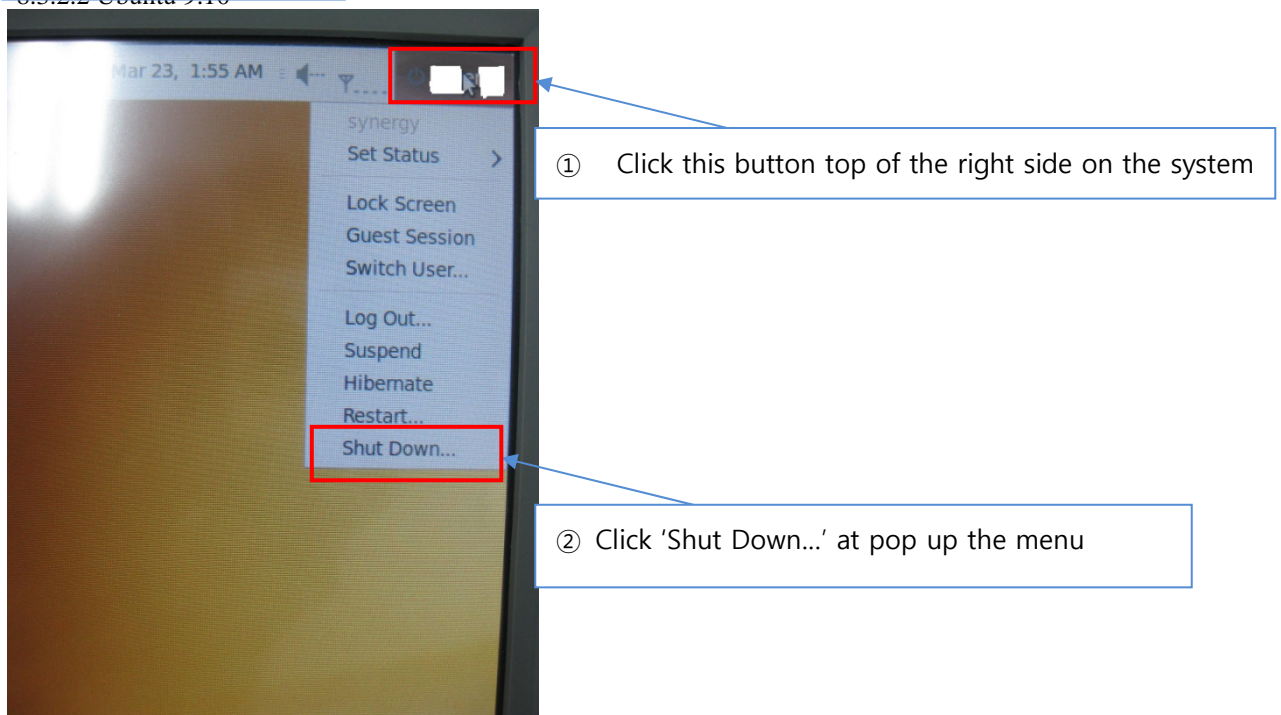
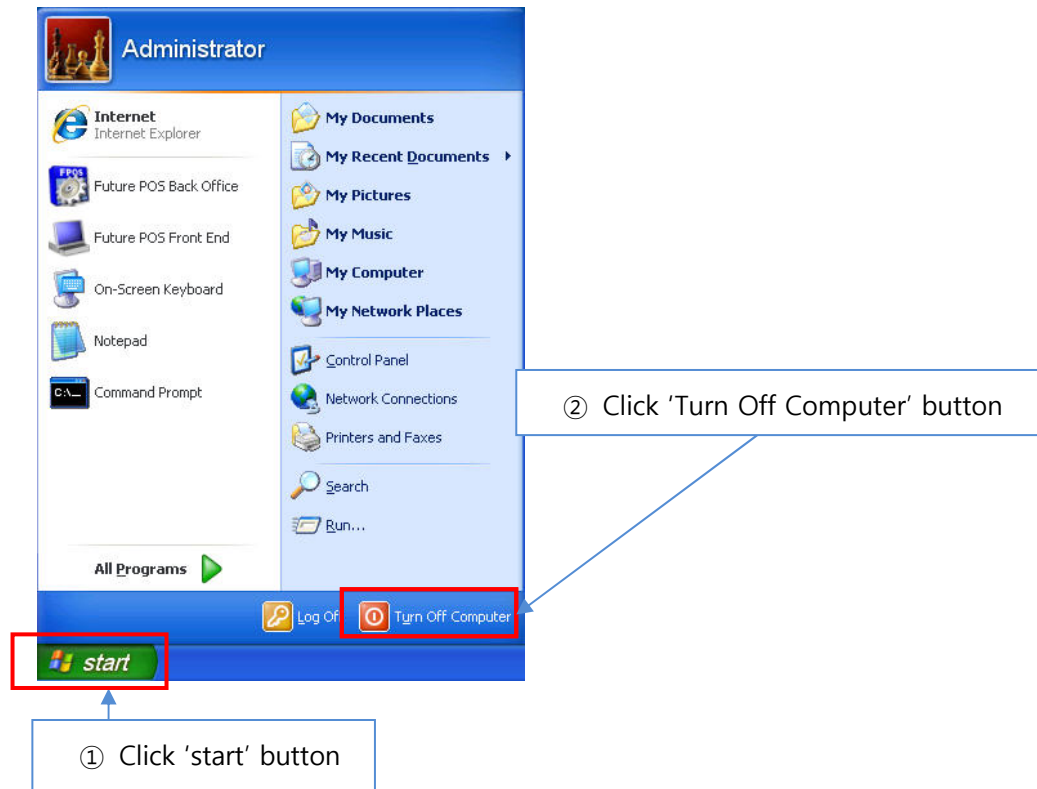
8.3.1 Turn On

Press the power S/W as you see below the picture. The bottom of the right side

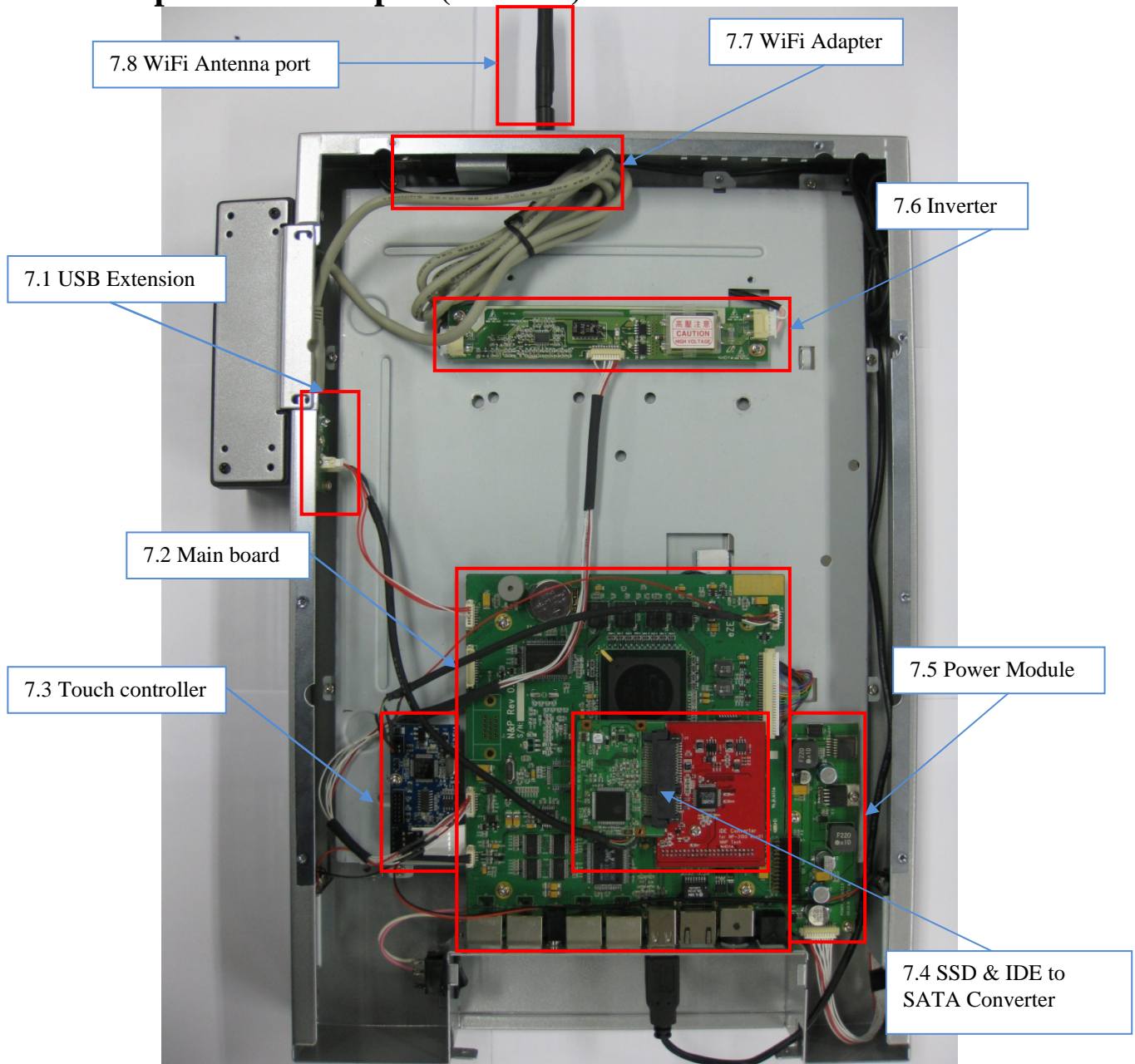


8.3.2 Turn Off

8.3.2.1 Windows XP



Description for each part(Interior)



1 USB Extension

This board is extending a port of USB. Generally it using for connect with MSR

2 Main board

NP-3100K Main board.

3 Touch controller

This device control the touch interface. Communication interface is USB.

4 SSD & IDE to SATA Converter

SSD(Solid State Drive) is replacement for HDD. It has 16GB capacities.

IDE converter is converted IDE data to SATA. It uses for SATA interface devices.

5 Power Module

Power module converts DC to DC and supplying voltages to main board. Power module receives 24V DC input voltage. It is converted to 12V and 5V DC.

6 Inverter

Supplying voltages to LCD BLU

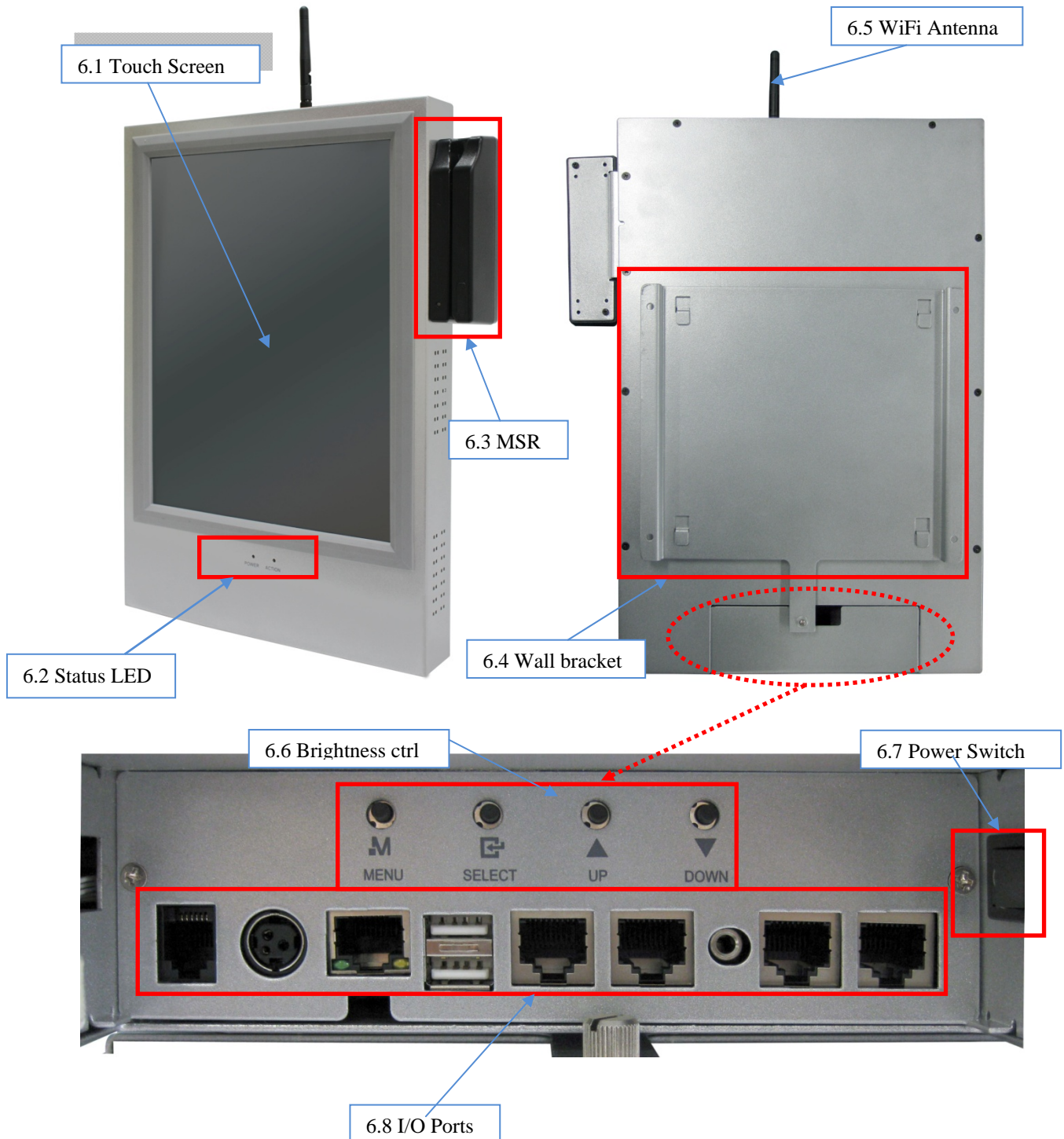
7 WiFi Adapter

Wireless LAN allows you to use.

8 WiFi Antenna Port

Wireless LAN antennas connect here.

Description for each part



1 Touch Screen

1.1 Touch position calibrate(Widows XP)

You can adjust touch position by yourself using the furnishing program. This program can be downloaded from the following web site(www.nnpotech.co.kr)

2 Status LED

NP-3100K has two LEDs. LED is shown to system's status.

Blue (left side) LED is show you power status.

Red (right side) LED is show you action of brightness control button.

3 MSR(Magnetic Swipe reader)

MSR can support I/II tracks. But default tracks are I/II track. Third track is option.

4 Wall bracket

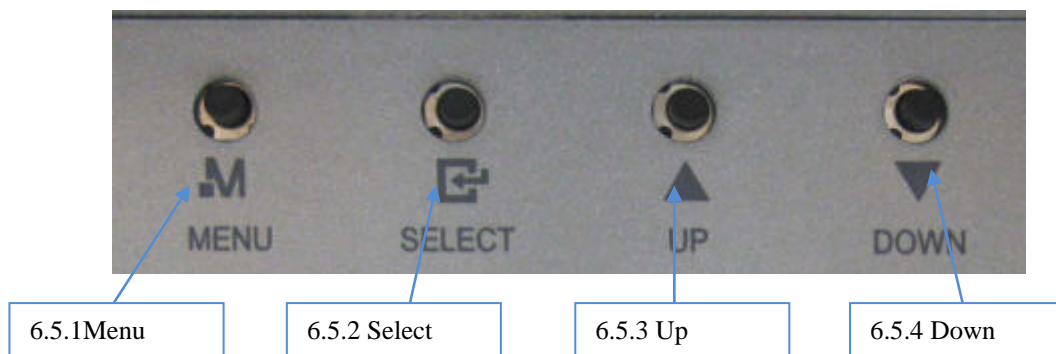
Wall bracket use to fix on the wall

5 WiFi Antenna

Wireless internet Antenna

6 Brightness ctrl

These keys are control the brightness of LCD.



6.1 Menu

To enter adjust LCD brightness (Contact hold 2 seconds after release)

6.2 Select

Exit from adjust LCD brightness menu

6.3 Up

If you want to increase LED brightness at LCD adjust menu. Use this button

6.4 Down

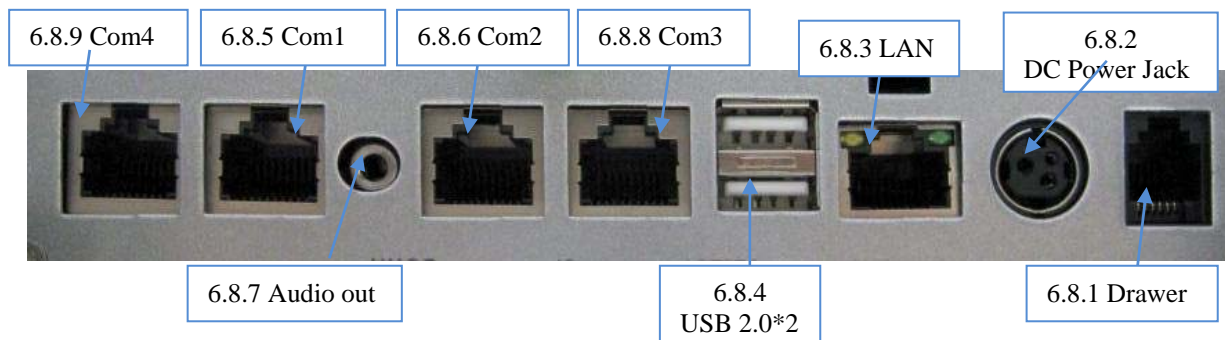
If you want to decrease LED brightness at LCD adjust menu. Use this button

7 Power Switch

This switch use for turn on/off system

8 I/O Ports

NP-3100K can support various I/O ports.



- Click the **“Create”** button to enter the store’s information, and then enter the store information into the screen.

KP Group	Tax	Option	Choice	Screen	PLU	Option Detail	Choice Detail	Set Menu
Currency	Floa	Comment	DC	Cash Button	Sales Type	Customer Group		
Store	POS	Staff Pay	Authority Levels	Staff	Table Group	Check	Department	Group

Store Information

←

Create

Edit

→

Store Name

Business Number

Conditions

Category

Currency

ZIP

Address

Detail Address

N&P Technolo...	2018176548	Manufacture	POS	USA	707 Samsung ...	
-----------------	------------	-------------	-----	-----	-----------------	--

NNP POS

⚙

Store Edit

* Store Type

Stand Alone

* Store Name

N&P Technologies

* Business Number

2018176548

Business Number2

* Conditions

Manufacture

* Category

POS

* Currency

USA

ZIP

homepage

* Address

707 Samsung Leaders Tower , 60 - 15 Gasan-Dong Seoul , Korea

Detail Address

Email

* Tel

+82-2-2026-720

Fax

* Boss Name

Stephen

Boss Tel

Boss CP

Open Date

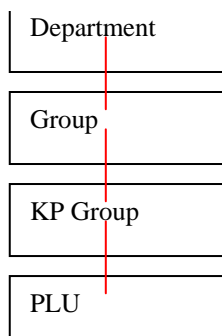
2008-10-24

* DB save day

60

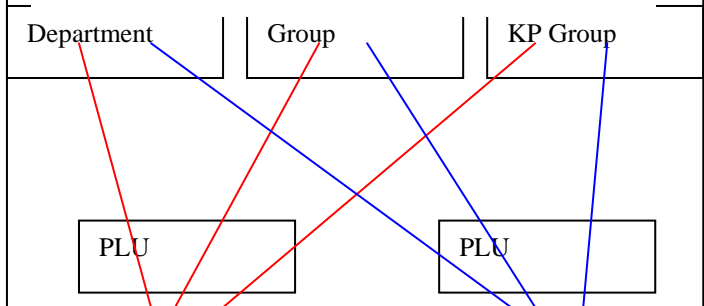
☒ Class Structured

In this example **Check** the
“**Class Structured**”



B. Enter the ~~100~~ ¹⁰ machine names that you plan to use.

In this example **Uncheck** the
“**Class Structured**”





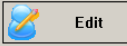


- In this step, you only have to enter the POS name, and check the Pos Use box.
- You need to allocate names to all POS tills when you have more than one POS till.

C. Create **Staff** (Clerk) **Pay** levels.

- You can make units of calculation for staff payments here.

Currency	Float	Comment	DC	Cash Button	Sales Type	Customer Group	
KP Group	Tax	Option	Choice	Screen	PLU	Option Detail	Choice Detail
Store	POS	Staff Pay	Authority Levels	Staff	Table Group	Check	Department
			Group				

Staff Pay

Store Code	Pay Code	Pay Name	Update Date	Update User
N&P Technolo...	1	Hours	2008-10-24 17:...	Stephen
N&P Technolo...	2	Monthly	2008-10-24 17:...	Stephen
N&P Technolo...	3	Weekly	2008-10-24 17:...	Stephen

NNP POS

Staff Pay Add

* Store Code

N&P Technologies

* Pay Name

* The Information is required.

OK

Cancel

Help

Close

D. Create Authority Levels.

- You can make many authority groups like you see below.
- Each authority group needs to be checked under more than one of the detail authorization check boxes.

Ex) Below, the sample “**Orderer group**” is permitted to ... order / cancel / re-finalize.

- Every Staff / Clerk must belong to one of the Authority Levels.
- We strongly recommend that “**Manager Groups**” be checked under all detail authorizations.

Base Code Input

Currency

Float

Comment

DC

Cash Button

Sales Type

Customer Group

KP Group

Tax

Option

Choice

Screen

PLU

Option Detail

Choice Detail

Set Menu



Store

POS

Staff Pay

Auth

Staff Authority Level

Store Code	Level Code	Level Name
N&P Technolo...	1	Manage
N&P Technolo...	3	Orderer
N&P Technolo...	2	Settler

* Store Code

N&P Technologies

* Level Name

Orderer

Auth

☐

Change Configuration Settings

☐

Table Layout

☐

Menu Layout

☒

Order

☒

Cancel Orders

☐

End of Day

☒

RE-FINALIZE

* The Information is required.

OK

Cancel

Help

Close

E. Individual Staff (Clerk)

- You need to create files for all staff members that use the POS tills.
- Each staff member must have a different unique access code.
- Access codes can have from 1 to 4 digits.
- Each staff member can have a unique i-Button for convenience.
- Every staff member needs to belong to one of the Authority levels. You can do this by checking the authority code check box like you see below.

Base Code Input

Staff Edit

Staff Information

Store Code	Staff Code	Access
N&P Technolo...	2	
N&P Technolo...	3	
N&P Technolo...	1	

Staff Name: Stephen

Staff Code: 1

Access code: 1

i-Button:

Store Code: N&P Technologies

Pay Kind: Select

Pay Amount: 0

ZIP:

Address:

Detail Address:

Tel:

Second Tel:

Work Date: 2008-10-24

Retire Date: 2108-01-01

Sign-on: Order

Drawer ID: 1

Authority Code

☐ Manager

☐ Settler

☒ Orderer

* The Information is required.

OK Cancel

Help Close

F. Table (Check) Group (level)

- Making a Table (Check) Group (level) is easy for classifying Tables (Checks).
- If the store has Tables (Checks) ... at least One Table Group must be created.
- The sample screen below has two Table Groups, One is for the first floor, and the other is for the second floor.

Base Code Input

Table Group Edit

Table Group Information

Store Code	Group Code	Group Name	Image Type	Group Type	Update Date	Update User
N&P Technolo...	3	1'st Floor	PNG			Stephen
N&P Technolo...	4	2'nd Floor	PNG			Stephen
N&P Technolo...	1	Floor1	PNG			Stephen

Store Code: N&P Technologies

Group Type: Tables

Group Name: 2'nd Floor

* The Information is required.

OK Cancel

Help Close

G. Tables (Checks) of each Table Group.

- You can make as many Tables (Checks) as the store needs.
- You can also easily change your table layout in the ... **Setting -> Table Plan** process.

The screenshot shows the 'Table Information' window in the NNP POS application. It features a table with columns: Store Code, Table Group Code, Table Code, Table Name, Sale Group Code, Table Sort, Table Kind, and Chair Count. The table lists three entries for 'N&P Technolo...' under 'Floor1'. An 'N&P Technolo...' 'Table Edit' dialog is open, showing fields for use_yn, Store Code, Table Group Code, Table Name, Table Kind, Chair Count, Chair Type, Shape Code, Font Name, and Font Size. The 'Table Edit' dialog has a red asterisk indicating required information.

Store Code	Table Group Code	Table Code	Table Name	Sale Group Code	Table Sort	Table Kind	Chair Count
N&P Technolo...	Floor1	1	TBL1		0	Table	2
N&P Technolo...	Floor1	10	TBL10		0	Table	10
N&P Technolo...	Floor1	2	TBL2		0	Table	10

use_yn	Store Code	Table Group Code	Table Name	Table Kind	Chair Count	Chair Type	Shape Code	Font Name	Font Size
<input checked="" type="checkbox"/>	N&P Technologies	Floor1	TBL3	Table	2	Chair	Roundrect	Gullimche	10

H. Departments that the PLU (MENU) can link to.

- You can make Department Categories.
- If PLUs are linked to a department, all sales results of PLUs, are accumulated in that department.

The screenshot shows the 'Department Information' window in the NNP POS application. It features a table with columns: Store Code, Department Code, Department Name, Update Date, and Update User. The table lists three entries for 'N&P Technolo...'. A 'Department Edit' dialog is open, showing fields for Store Code and Department Name. The 'Department Edit' dialog has a red asterisk indicating required information.

Store Code	Department Code	Department Name	Update Date	Update User
N&P Technolo...	3	Alchohole	2008-10-27 10:...	Stephen
N&P Technolo...	2	Meal	2008-10-27 10:...	Stephen
N&P Technolo...	1	Sprit	2008-10-24 17:...	Stephen

Store Code	Department Name
N&P Technologies	Meal

I. Groups that the PLU (MENU) can link to.

- You can make Group Categories.
- If PLUs are linked to a Group, all sales results of PLUs are accumulated in that Group.
- You can select whether a Group is linked to a Department or not by checking - or not ... the Class Structured of Store Tab.

Store Type: Stand Alone

Store Name: N&P Technologies

Business Number: 2018176548

Business Number2:

Conditions: Manufacture

Category: POS

Currency: USA

ZIP:

homepage:

Address: 707 Samsung Leaders Tower , 60 - 15 Gasan-Dong Seoul , Korea

Detail Address:

Email:

Tel: +82-2-2026-720

Fax:

Boss Name: Stephen

Boss Tel:

Boss CP:

Open Date: 2008-10-24

DB save day: 60

☒ Class Structured

- Under the first window, is an example of using a “Structured group type”.
- Under the second window, is an example of using “Non - Structured group type”.

Base Code Input

Currency	Float	Comment	DC	Cash Button	Sales Type	Customer Group
KP Group	Tax	Option	Choice	Screen	PLU	Option Detail
Choice Detail	Set Menu	Store	POS	Staff Pay	Authority Levels	Staff
Table Group	Check	Department	Group			

Group Information

Create Edit Remove

Store Code	Department Code	Group Code	Group Name	Update Date	Update User
N&P Technolo...	Sprit	1	Sprit	2008-10-24 17:...	Stephen
N&P Technolo...	Alchohole	2	wine	2008-10-27 11:...	Stephen

Group Add

Store Code: N&P Technologies

Department Code: Alchohole

Group Name: Beer

* The Information is required.

OK Cancel

NNP POS

Base Code Input

Currency	Float	Comment	DC	Cash Button	Sales Type	Customer Group	
Store	POS	Staff Pay	Authority Levels	Staff	Table Group	Check	Department
Group							
KP Group	Tax	Option	Choice	Screen	PLU	Option Detail	Choice Detail
Set Menu							

KP Group Information

Create Edit Remove

Store Code	Group Code	KP Group Code	KP Group Name	Update Date	Update User	
N&P Technolo...	Sprit	4	COGNAC/COC...	2008-10-24 17:...	Stephen	
N&P Technolo...	Sprit	11	DESSERTS/ C...	2008-10-24 17:...		
N&P Technolo...	Sprit	3	LIQUERS	2008-10-24 17:...		
N&P Technolo...	Sprit	6	MAINS	2008-10-24 17:...		
N&P Technolo...	Sprit	5	PORT/SHERRY	2008-10-24 17:...		
N&P Technolo...	Sprit	7	RICE/NAANS	2008-10-24 17:...		
N&P Technolo...	Sprit	8	SOFT DRINKS ...	2008-10-24 17:...		
N&P Technolo...	Sprit	9	TANDOOR	2008-10-24 17:...		
N&P Technolo...	Sprit	10	VEGETABLE ...	2008-10-24 17:...		
N&P Technolo...	Sprit	2	VODKA/GIN	2008-10-24 17:...		
N&P Technolo...	Sprit	1	Whiskey	2008-10-24 17:...		

Help Close

NNP POS

KP Group Add

* Store Code N&P Technologies

* Group Code wine

* KP Group Name white wine

* The Information is required.

OK Cancel

NNP POS

Base Code Input

Currency	Float	Comment	DC	Cash Button	Sales Type	Customer Group	
Store	POS	Staff Pay	Authority Levels	Staff	Table Group	Check	Department
Group							
KP Group	Tax	Option	Choice	Screen	PLU	Option Detail	Choice Detail
Set Menu							

KP Group Information

Create Edit Remove

Store Code	Group Code	KP Group Code	KP Group Name	Update Date	Update User	
N&P Technolo...	Sprit	4	COGNAC/COC...	2008-10-24 17:...		
N&P Technolo...	Sprit	11	DESSERTS/ C...	2008-10-24 17:...		
N&P Technolo...	Sprit	3	LIQUERS	2008-10-24 17:...		
N&P Technolo...	Sprit	6	MAINS	2008-10-24 17:...		
N&P Technolo...	Sprit	5	PORT/SHERRY	2008-10-24 17:...		
N&P Technolo...	Sprit	7	RICE/NAANS	2008-10-24 17:...		
N&P Technolo...	Sprit	8	SOFT DRINKS ...	2008-10-24 17:...		
N&P Technolo...	Sprit	9	TANDOOR	2008-10-24 17:...		
N&P Technolo...	Sprit	10	VEGETABLE ...	2008-10-24 17:...		
N&P Technolo...	Sprit	2	VODKA/GIN	2008-10-24 17:...		
N&P Technolo...	Sprit	1	Whiskey	2008-10-24 17:...	Stephen	

Help Close

NNP POS

KP Group Edit

* Store Code N&P Technologies

* Group Code Select

* KP Group Name MAINS

* The Information is required.

OK Cancel

K. Using a **Tax list** at the store.

- You can make different **"Tax rates"** that are linked to the PLU.

Currency	Float	Comment	DC	Cash Button	Sales Type	Customer Group		
Store	POS	Staff Pay	Authority Levels	Staff	Table Group	Check	Department	Group
KP Group	Tax	Option	Choice	Screen	PLU	Option Detail	Choice Detail	Set Menu
N&P Technolo...	4	%	0					
N&P Technolo...	2	%	17					
N&P Technolo...	3	%	10					

Tax
Create Edit Remove
Store Code Code Tax Kind Tax Value
N&P Technolo... 4 % 0
N&P Technolo... 2 % 17
N&P Technolo... 3 % 10

NNP POS
Tax Edit
* Store Code N&P Technologies
* Tax Name VAT1
* Tax Value 17
Tax Symbol
* Tax Kind %
* The Information is required.
OK Cancel

L. Pop-up screen – **Options**.

- You can make various Option Screens that have Option Details.
- You can create PLUs with Options. When ordering the PLU, the option screen will Pop-up ... for choosing option details.
- For example, the Steak PLU can have an **option** screen for **cooking**, and the cooking screen can have **three option details** of Well Done, Medium or Rare.

NNP POS
Base Code Input
Currency Float Comment DC Cash Button Sales Type Customer Group
Store POS Staff Pay Authority Levels Staff Table Group Check Department Group
KP Group Tax **Option** Choice Screen PLU Option Detail Choice Detail Set Menu

Option
Create Edit Remove
Store Code Option code Option Name Update Date Update User
N&P Technolo... 1 Cooking 2008-10-27 12:... Stephen

NNP POS
Option Edit
* Store Code N&P Technologies
* Option Name Cooking
* The Information is required.
OK Cancel

Help Close

M. **Option Details**.

- Below, the **OPTION DETAIL SCREEN** shows the **"Option Detail Name"** for WELL DONE.

NNP POS

Base Code Input

Currency	Float	Comment	DC	Cash Button	Sales Type	Customer Group	
Store	POS	Staff Pay	Authority Levels	Staff	Table Group	Check	Department
Group							
KP Group	Tax	Option	Choice	Screen	PLU	Option Detail	Choice Detail
						Set Menu	

Option Detail

Create Edit Remove

Store Code	Option Code	Option Detail Code	Option Detail Name	Update Date	Update User
N&P Technolo...	Cooking	2	Medium	2008-10-27 12:...	Stephen
N&P Technolo...	Cooking	3	Rare	2008-10-27 12:...	Stephen
N&P Technolo...	Cooking	1	Well Done		

Option Detail

* Store Code N&P Technologies

* Option Code Cooking

* Option Detail Name Well Done

* The Information is required.

OK Cancel

Help Close

N. Pop-up screen -- Choices

- You can make many Choice screens that have Choice details.
- You can create a PLU that has a Choice screen. When ordering the PLU, the Choice screen will pop-up for choosing a Choice detail.
- A Choice Detail is one of the PLU (Menus), so you need to make a PLU that can be used as a Choice **Detail item** ... ahead of doing a **Choice Detail Tab**.
- For example, you can set the PLU to have a dessert screen that has three choice details such as Coffee, Tea or Ice cream.

Currency	Float	Comment	DC	Cash Button	Sales Type	Customer Group	
Store	POS	Staff Pay	Authority Levels	Staff	Table Group	Check	
Department	Group	KP Group	Tax	Option	Choice	Screen	PLU
Option Detail	Choice Detail	Set Menu					

Choice

←

Create

Edit

Remove

→

Store Code	Choice Menu Code	Choice Menu Name	Update Date	Update User
N&P Technolo...	1	Dessert	2008-10-27 12:...	Stephen

NNP POS

Choice Edit

* Store Code

N&P Technologies

* Choice Menu Name

Dessert

* The Information is required.

OK

Cancel

Tax	Option	Choice	Screen	PLU	Option Detail	Choice Detail
-----	--------	--------	--------	-----	---------------	---------------

Create

Set Menu Code	Menu Code	Update Date
Dessert	coffee	2008-10-27 14:...
Dessert	Ice Cream	2008-10-27 14:...
Dessert	Tea	2008-10-27 14:...

NNP POS

Choice Detail

* Store Code

N&P Technologies

* Choice Code

Dessert

* Menu Code

ACHARI GOSHT

* The Information is required.

OK

Cancel

O. PLU (Menu) – Creation.



Currency	Float	Comment	DC	Cash Button	Sales Type	Customer Group	
Store	POS	Staff Pay	Authority Levels	Staff	Table Group	Check	
Department	Group	KP Group	Tax	Option	Choice	Screen	PLU
Option Detail	Choice Detail	Set Menu					

Menu Information						
Store Code	Menu Code	KP Group	Menu Second Name	Sale Price 1	Tax Code	Set Kind
N&P Technolo...	20	MAINS	ACHARI GOSHT	8,411.000000	VAT2	Standard
N&P Technolo...	14	LIQUERS	AMERITTO	369,999.000000	FREE	Standard
N&P Technolo...	22	PORT/SHERRY	AMONTILLOPO	9,999.000000	VAT1	Standard
N&P Technolo...	35	SOFT DRINKS ...	APPLE JUICE	7.000000	FREE	Standard
N&P Technolo...	38	TANDOOR	BARAH KEBAB	22.000000	FREE	Standard
N&P Technolo...	47	Whiskey	BLACK BUSH	2.650000	FREE	Standard
N&P Technolo...	10	DESSERTS/ C...	BLACK COFFEE	6,300.000000	VAT1	Standard
N&P Technolo...	1	COGNAC/COC...	BRAMBLE	50,000.000000	VAT1	Standard
N&P Technolo...	19	MAINS	CHICKEN BHAGARA	15,222.000000	FREE	Standard
N&P Technolo...	46	Whiskey	CHIVASREGAL	1.230000	FREE	Standard
N&P Technolo...	32	SOFT DRINKS ...	COCA COLA	67.000000	FREE	Standard



* Store Code	N&P Technologies	* Department	Sprit	<input type="checkbox"/> Any Price
* Menu Name	BLACK BUSH	* Group	Sprit	<input type="checkbox"/> Stock
Menu Second	BLACK BUSH	* KP Group	Whiskey	<input type="checkbox"/> Standalone Stock
* Tax Code	FREE	* Set Kind	Standard	<input checked="" type="checkbox"/> Menu Use
Store Number	all	* Price Level	Default	<input type="checkbox"/> Condiment
Option 1	Select	Choice 1	Select	Kitchen Printer
Option 2	Select	Choice 2	Select	Kitchen Printer
Option 3	Select	Choice 3	Select	Kitchen Printer
Option 4	Select	Choice 4	Select	Kitchen Printer
Option 5	Select	Choice 5	Select	Kitchen Printer
* Basic price	2.650000	Sale Price 5	Select	Menu DC 1
Sale Price 1	0.000000	Sale Price 6	0.000000	Menu DC 2
Sale Price 2	0.000000	Sale Price 7	0.000000	Menu DC 3
Sale Price 3	0.000000	Sale Price 8	0.000000	Menu DC 4
Sale Price 4	0.000000	Sale Price 9	0.000000	Menu DC 5

* The Information is required.

OK Cancel

Menu Name : Name that is used for reporting, REG window, Kitchen printer ... etc.

Menu Second : You can give the menu a second name.
 - This is a very useful feature when the Menu Name uses a local language, and the second Menu name uses another country's language.

Option / Choice Screen : Every PLU can have a maximum of 5 Options and or Choices.

Price : Every PLU can have a maximum of 10 price levels.

- This is very useful for automatically sales with different prices by Customer Loyalty Level, Scheduling times such as (happy hours) etc.

Department / Group / KP Group : Link PLUs to these categories for reporting.

Set Kind : You need to select normal PLUs or FixedSet or VarSet .

- FixedSets have fixed PLUs that construct the Set Menu, but the VarSet will be constructed During sales.

Price Levels : You need to select one of the Price levels that uses normal sales.

Any Price : If you check this, pre-entered prices “**override**” the prices used in normal sales.

Stock : If you check this, PLU stock is controlled in the “**Web-based store**”.

- You can enter a minimum stock quantity for controlling your stock.

Standalone Stock : If you check this, PLU stock is controlled in the “**Standalone store**”.

- You can control your stock in ... **Setting - > Configuration -> Sales Tap-> Stock.**

Menu Use : You must check this button for sales.

- You can un-check this button, if you want to create a PLU but not sales.

Condiments : The PLU will be sold as a condiment to the item before it.

- The Condiment PLU will follow the item regardless of the sorting Role.
- You can use this function when making more personal meals with Condiment PLUs .
- We recommend making a separate **Screen (Menu) Page** containing **condiment** PLUs.

Kitchen Printer 1 ~ 9 : This selects which KP's the products appear on. A PLU can link to a maximum of five KP's at one time.

- Connect each Kitchen Printer to the POS Till following this sequence... **Setting-> Configuration -> Device Tab**

DC Menu 1 ~ 5 : A PLU can have five possible Discount Rates that are operated by a “DC” button .This is used for allowing a menu discount on this item.

P. Set Menu.

- You can construct a Set Menu with many PLUs that you want linked to the Set Menu.
- PLUs linked to the Set Menu, are transferred to the Kitchen Printer and to the Sales Screen with a Set Menu.

Currency	Float	Comment	DC	Cash Button	Sales Type	Customer Group	
Store	POS	Staff Pay	Authority Levels	Staff	Table Group	Check	Department
KP Group	Tax	Option	Choice	Screen	PLU	Option Detail	Choice Detail
							Set Menu

Set Menu Detail

←

Create

Remove

→

Store Code	Set Menu Code	Menu Code	Update Date	Update User	
N&P Technolo...	MARITINI	ACHARI GOSHT	2008-10-27 12:...	Stephen	
N&P Technolo...	SADAY CHAWAL	APPLE JUICE	2008-10-27 01:...	Stephen	

NNP POS

Set Menu Add

* Store Code

N&P Technologies

* Set Menu Code

MARITINI

* Menu Code

APPLE JUICE

* The Information is required.

OK

Cancel

Help

Close

Q. **Screen (Menu Page) List...** for easily selecting **Menus** when ordering.

Currency	Float	Comment	DC	Cash Button	Sales Type	Customer Group	
Store	POS	Staff Pay	Authority Levels	Staff	Table Group	Check	Department
KP Group	Tax	Option	Choice	Screen	PLU	Option Detail	Choice Detail
							Set Menu

Menu Page Information

←

Create

Edit

Remove

→

Store Code	Menu Page Code	Menu Page Name	Page Locate	Page Color	Update Date	Update User	
N&P Technolo...	4	COGNAC/COC...	0	FFFFFF	2008-10-24 18:...	Stephen	
N&P Technolo...	11	DESSERTS/ C...	0	FFFFFF	2008-10-24 18:...	Stephen	
N&P Technolo...	3	LIQUERS	0	FFFFFF	2008-10-24 18:...	Stephen	
N&P Technolo...	6	MAINS	0	FFFFFF	2008-10-24 18:...	Stephen	
N&P Technolo...	5	PORT					
N&P Technolo...	7	RICI					
N&P Technolo...	8	SOFT					
N&P Technolo...	9	TAI					
N&P Technolo...	10	VEGE					
N&P Technolo...	2	VOI					
N&P Technolo...	1	W					

NNP POS

Menu Page Edit

* Store Code

N&P Technologies

* Menu Page Name

MAINS

☐ Condiment Screen

* The Information is required.

OK

Cancel

Help

Close

- You can make as many Screen (Menu Page) lists, for Screen buttons as you want.
- Screen lists can be allocated as **"Buttons"** through **SETTING->MENU PLAN & MENU FUNCTION**.

Screen List	Menu List																
PAGE	PAGE NAME																
(C)1	WHISKY																
2	VODKA/GIN																
3	LIQUERS																
4	COGNAC/COCKTAILS																
5	PORT/SHERRY																
6	MAINS																
7	RICE/NAANS																
8	SOFT DRINKS JUICES																
9	TANDOOR																
10	VEGETABLE DISHES																
11	DESSERTS/ COFFEE																
Up		Down															
Font		Background Color		Picture		Remove		Select		Copy		Paste		Save		Close	

SETTING-> MENU FUNCTION

Settle POS		RECEIPT OFF	BILL OFF	10/28 (화) 01:48:32	HNP	
PAGE UP	Function Name					
GROUP1	PLU GROUP LIST PAGEDOWN					
GROUP2	PLU GROUP LIST PAGEUP					
GROUP3	PLU GROUP1					
GROUP4	PLU GROUP10					
PAGE DOWN	PLU GROUP2					
	PLU GROUP3					
	PLU GROUP4					
	PLU GROUP5					
	PLU GROUP6					
	PLU GROUP7					
Up		Down				
SIGN ON						
HOME						

Button Properties

Function	
Name	
Font	Tahoma
Size	10
Text Color	
Background Color	

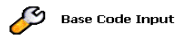
Remove

Save

Close

- Sales mode screen after allocating Screen Buttons.

S. Comments List – Sending a Comments List to the Kitchen Printer.



KP Group	Tax	Option	Choice	Screen	PLU	Option Detail	Choice Detail	Set Menu
Store	POS	Staff Pay	Authority Levels	Staff	Table Group	Check	Department	Group
Currency	Float	Comment	DC	Cash Button	Sales Type	Customer Group		

Comment

←

Create

Edit

Remove

→

Store Code	Comment Code	Comment Name	Update Date	Update User
N&P Technolo...	1	Delivery	2008-10-28 08:...	Stephen
N&P Technolo...	2	Split	2008-10-28 08:...	Stephen

NNP POS

Comment Add

* Store Code

N&P Technologies

* Comment Name

Wrap

* The Information is required.

OK

Cancel

- You

can make a comment lists for **adding special instructions** to the **PLU (Menu)** when taking an order, by clicking the **Comment** buttons in the **ORDER SCREEN**.

T. DC Lists - for discount Pricing.

NNP POS

Base Code Input

KP Group	Tax	Option	Choice	Screen	PLU	Option Detail	Choice Detail	Set Menu
Store	POS	Staff Pay	Authority Levels	Staff	Table Group	Check	Department	Group
Currency	Float	Comment	DC	Cash Button	Sales Type	Customer Group		

DC Info

←

Create

Edit

Remove

→

Store Code	Dc Info Code	Dc Info Name	Price Ratio	Dc Type	Dc Scope	Start Date	Valid Days
N&P Technolo...	8888	Member DC	0.000000	%	Member		

NNP POS

DC Info Add

* Store Code

N&P Technologies

DC Menu 1

Select

* Dc Info Name

VIP 20%

DC Menu 2

Select

* Price Ratio

20

DC Menu 3

Select

* Dc Type

%

DC Menu 4

Select

* Dc Scope

Menu

DC Menu 5

Select

Start Date

2008-10-29

Valid Days

- You can make as many “**DC Policies**” as you want.

- Each DC policy can be made differently by a “**Price Ratio**” (**Value of DC amount or DC rate**),

DC type (% or amount) , DC Scope (**Pointed Menu only, or Sales Total**).

- You can modify the total balance of an order, by clicking the DC button, and then by choosing one of DC policies when finalizing sales.

U. Preset **Cash Buttons** for easily getting cash input.



KP Group	Tax	Option	Choice	Screen	PLU	Option Detail	Choice Detail	Set Menu
Store	POS	Staff Pay	Authority Levels	Staff	Table Group	Check	Department	Group
Currency	Float	Comment	DC	Cash Button	Sales Type	Customer Group		

Store Code	Cash Button Code	Cash Button Amount	Cash Button Name	Ext Button Number	Currency Type Code	Update Date	Update User
N&P Technolo...	1	100.000000	\$ 100	1	USA	2008-10-29 14:...	Stephen
N&P Technolo...	2	50.000000	\$ 50	2	USA	2008-10-29 14:...	Stephen
N&P Technolo...	3	20.000000	\$ 20	3	USA	2008-10-29 14:...	Stephen
N&P Technolo...	4	10.000000	\$ 10	4	USA	2008-10-29 14:...	Stephen
N&P Technolo...	5	5.000000	\$ 5	5	USA	2008-10-29 14:...	Stephen

NNP POS
Cash Button Edit

* Store Code: N&P Technologies

* Cash Button Name: \$ 5

* Cash Button Amount: 5.000000

* Ext Button Number: 5

* Currency Type Code: USA

* The Information is required.

OK Cancel Close

V. **Sales Types.**

Store	POS	Staff Pay	Authority Levels	Staff	Table Group	Check	Department	Group
KP Group	Tax	Option	Choice	Screen	PLU	Option Detail	Choice Detail	Set Menu
Currency	Float	Comment	DC	Cash Button	Sales Type	Customer Group		

Code	Sales Code	Sales Name	Sales Type	Draw Open	Receipt Yn	Update Date	Update User
inolo...	2	Card	Card	N	Y	2008-10-29 14:21:40	
inolo...	1	Cash	Cash	Y	N	2008-10-29 14:21:40	
inolo...	7	Cash Receipt	Cash receipt	N	Y	2008-10-29 14:21:40	
inolo...	4	Credit	Credit	N	N	2008-10-29 14:21:40	
inolo...	6	Customer Dc	Member Point	N	Y	2008-10-29 14:21:40	
inolo...	9	De					
inolo...	8	Poir					
inolo...	5	Poir					
inolo...	3	Tc					

NNP POS
Sales Type Edit

* Store Code: N&P Technologies

* Sales Name: Cash

* Sales Type: Cash

☒ Draw Open

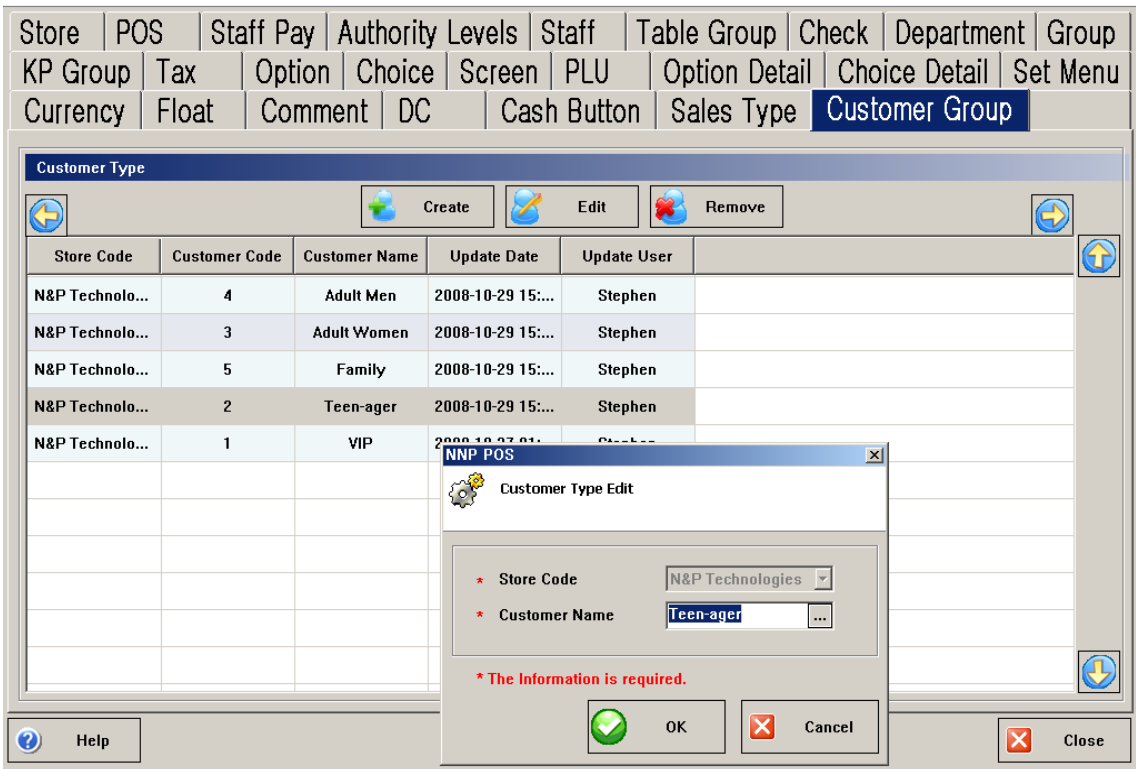
☐ Receipt Yn

* The Information is required.

OK Cancel Close

- You can use these sales types when finalizing sales.
- 8 kinds of sales types are automatically created.

W. **Customer Groups.**



- You can make as many “**Customer Type Lists**” as you want.