

Certification Exhibit

**FCC ID: X6P-QSYNC433AM
IC: 8832A-QSYNC433AM**

**FCC Rule Part: 15.231
IC Radio Standards Specification: RSS-210**

ACS Project Number: 12-0527

**Manufacturer: HomeRun Holdings
Model: QSYNC-433AM**

Label Information

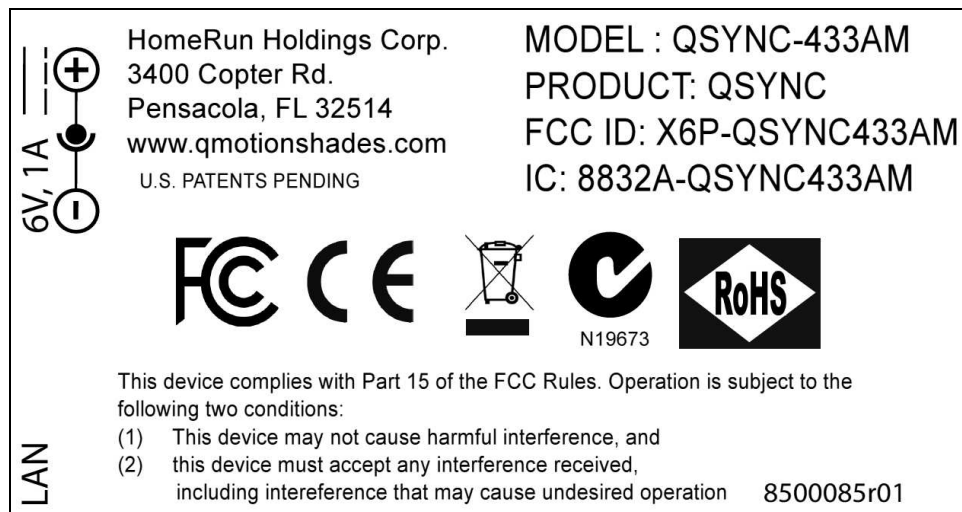
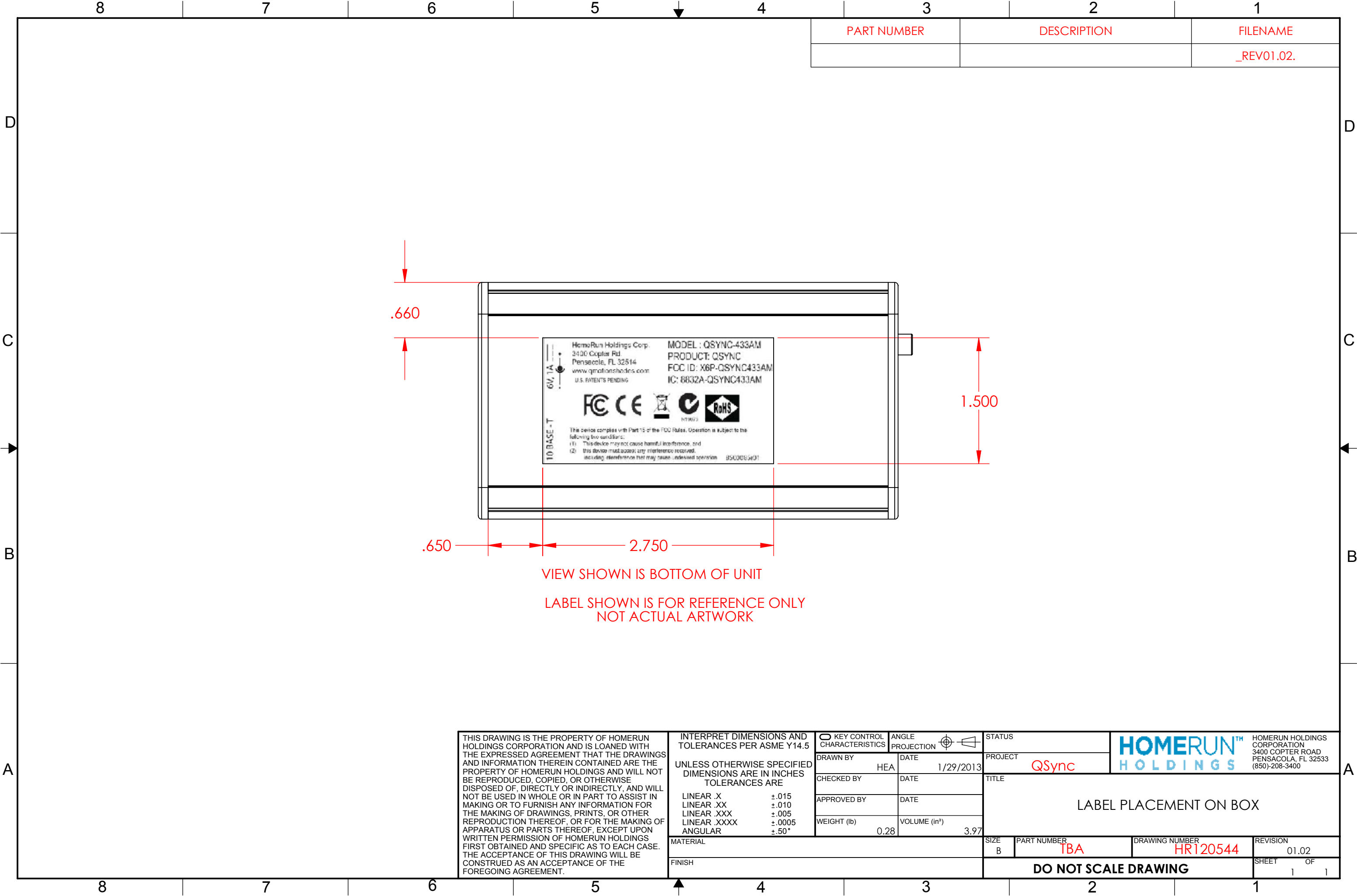


Figure 1: Sample Label



VIEW SHOWN IS BOTTOM OF UNIT

LABEL SHOWN IS FOR REFERENCE ONLY
NOT ACTUAL ARTWORK

THIS DRAWING IS THE PROPERTY OF HOMERUN HOLDINGS CORPORATION AND IS LOANED WITH THE EXPRESSED AGREEMENT THAT THE DRAWINGS AND INFORMATION THEREIN CONTAINED ARE THE PROPERTY OF HOMERUN HOLDINGS AND WILL NOT BE REPRODUCED, COPIED, OR OTHERWISE DISPOSED OF, DIRECTLY OR INDIRECTLY, AND WILL NOT BE USED IN WHOLE OR IN PART TO ASSIST IN MAKING OR TO FURNISH ANY INFORMATION FOR THE MAKING OF DRAWINGS, PRINTS, OR OTHER REPRODUCTION THEREOF, OR FOR THE MAKING OF APPARATUS OR PARTS THEREOF, EXCEPT UPON WRITTEN PERMISSION OF HOMERUN HOLDINGS FIRST OBTAINED AND SPECIFIC AS TO EACH CASE. THE ACCEPTANCE OF THIS DRAWING WILL BE CONSTRUED AS AN ACCEPTANCE OF THE FOREGOING AGREEMENT.

INTERPRET DIMENSIONS AND TOLERANCES PER ASME Y14.5

UNLESS OTHERWISE SPECIFIED
DIMENSIONS ARE IN INCHES
TOLERANCES ARE

LINEAR .X ±.015
LINEAR .XX ±.010
LINEAR .XXX ±.005
LINEAR .XXXX ±.0005
ANGULAR ±.50°

MATERIAL

FINISH

KEY CONTROL CHARACTERISTICS

DRAWN BY

HEA

CHECKED BY

APPROVED BY

WEIGHT (lb)

DATE

1/29/2013

DATE

DATE

VOLUME (in³)

0.28

3.97

ANGLE PROJECTION

STATUS

PROJECT

TITLE

SIZE

B

PART NUMBER

DRAWING NUMBER

REVISION

QSync

LABEL PLACEMENT ON BOX

TBA

HR120544

01.02

1

1

DO NOT SCALE DRAWING

1

HOMERUN™
HOLDINGS

HOMERUN HOLDINGS CORPORATION
3400 COPTER ROAD
PENSACOLA, FL 32533
(850)-208-3400