

User Manual

1. How to Install Hardware

A. Use a socket spanner screw off the cap (nearby the USB socket, back of the Hiteboard, circled by red line in the picture below), then fasten the steel bracket with wireless module by this screw cap.



B. Connect Hiteboard and wireless module by USB cable, and power up the wireless module.



2. Hiteboard Settings

- A. For QWB56, QWB200, QWB300 and QWB100WS, you should switch Hiteboard to COM port mode first.
- B. For QWB200frame, you should switch main board to TTL position first.
- C. This wireless module can not support QWB200slim.

3. Driver Install

- A. Put Wireless Module Driver CD into the computer
- B. Plug Dongle to USB port, Windows will show the 'Found New Hardware Wizard', choose "No, not this time" and click 'Next'. Please see the picture below.



Then choose 'Install from a list or specific location (Advanced)' and click 'Next'.



Please location to your CD-ROM driver, the Windows will install driver automatically.

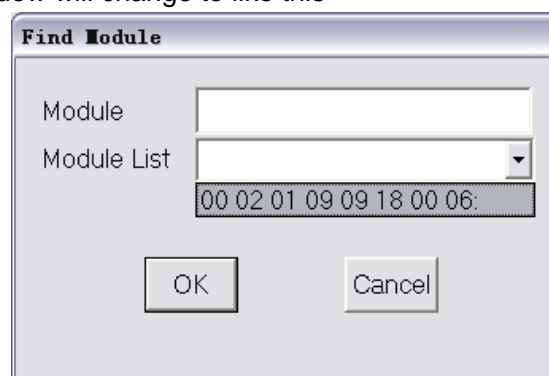
C. If there is a 'Hardware Installation' window (see the picture below), please click 'Continue Anyway'.



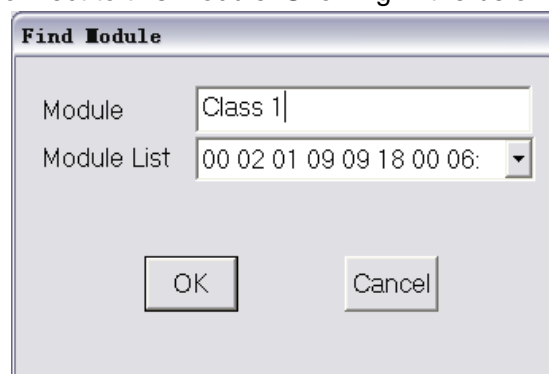
D. Once install finished, you can run the DigitalPenServer to start using Hiteboard.

4. Search Hiteboard

A. Double click DigitalPenServer tray icon, then click 'FindModule'. Wait for a few seconds the 'Find module' window will change to like this



Click 'Module list', searched modules will show in the list. The eight numbers before the colon ':' like '00 02 01 09 09 18 00 06' are the MAC address of wireless module, and each module has a unique MAC address. After the colon ':', there should be eight characters for user to describe the Hiteboard which connect to this module, and it's blank in default mode. You can input no more than eight characters into the 'Module' input box to describe the Hiteboard which connect to this module. Showing in the below picture.



B. After chosen module, click 'OK' to bind module with Dongle.

5. Bind Dongle with Hiteboard

If bind is successful, there should be a message box showing 'Bind OK',



then click 'OK' to start connect to Hiteboard, it will take about 10 seconds to connect. After connect success, the using is same as connect by USB cable.



6. Notes

A. Before searching wireless module, please make sure wireless module is power on. If searching failed, please click 'Cancel' and try it again. If still can not find any wireless module, please reset wireless module or reduce the distance between dongle and wireless module.

B. While using wireless module, please make sure the distance between dongle and wireless module is less than 20m.

7. FCC Statement

NOTE 1:

This device complies with Part 15 of the FCC Rules. Operation is subject to the following two conditions:

- (1) This device may not cause harmful interference, and
- (2) This device must accept any interference received, including interference that may cause undesired operation. Note: The manufacturer is not responsible for ANY interference, for example RADIO or TV interference, caused by unauthorized modifications to this equipment. Such modifications could void the user's authority to operate the equipment.

NOTE 2:

This equipment has been tested and found to comply with the limits for a Class B digital device, pursuant to part 15 of the FCC Rules.

These limits are designed to provide reasonable protection against harmful interference in a residential installation. This equipment generates, uses and can radiate radio frequency energy and, if not installed and used in accordance with the instructions, may cause harmful interference to radio communications. However, there is no guarantee that interference will not occur in a particular installation. If this equipment does cause harmful interference to radio or television reception, which can be determined by turning the equipment off and on, the user is encouraged to try to correct the interference by one or more of the following measures:

Reorient or relocate the receiving antenna.

Increase the separation between the equipment and receiver.

Connect the equipment into an outlet on a circuit different from that to which the receiver is connected.

Consult the dealer or an experienced radio/TV technician for help.