
Table of Contents

Product Functions-----	
LCD Usage Tips & Recommendations-----	
Precautions before Use	
Introduction-----	
Safety Notice-----	
Warnings-----	
Power Precautions-----	
Security Precautions-----	
Maintenance-----	
Transportation-----	
Wall Mounting-----	
Package Contents-----	
Product Exterior-----	
OSD Control Button-----	
Auxiliary Key Program Installation	
WINDOWS 7 VISTA Installation -----	
WINDOWS XP Installation -----	
Auxiliary Key Settings -----	
Auxiliary Key Functions -----	
Technical Specifications-----	

Product Functions

Wide diagonal angles for extensive and comfortable viewing

Optimal image resolution

1920 x 1080 @ 60Hz

Full Screen support at lower resolution

VGA analog video input

Swift response time offers superb enjoyment for gaming and video

Adjustable angles for personalized viewing

Can be wall mounted; includes VESA standard screw fixtures

Includes its own safety lock slot (eliminating the need for additional purchasing of safety lock cables)

“Plug & Play”(does not require computer system support

Low power consumption, to help save on electricity costs

OSD Adjustment Functions provide user-friendly setting & screen optimization options

Provides Auxiliary Key Functions, for swift and efficient processing

LCD Usage Tips and Recommendations

If the following occur during LCD usage, please be assured that these are normal conditions, and will not affect usage, nor in any way indicate LCD deficiency.

Note

Flickering on the LCD screen may occur during initial usage, which is completely normal. To eliminate flickering, shutdown the monitor, then restart.

Screen brightness may vary, depending on usage of different desktop images.

Pixel effectiveness on the LCD monitor can reach up to at least 99.99%, yet 0.01% of pixel absence or brightness reduction may occur.

When switching from one image to another, faint residual images may remain on the LCD screen, especially if the previous image has been displayed for overlong periods. If this occurs, it is normal, and the display image will gradually change to normal. The user may also opt to turn off the power source and restart, for a clean display.

Precautions Before Use

Introduction

The specifications and data recorded herein are for reference use; this manual does not in any way serve as a guarantee document for operational errors. In the event of specification change, no notices will be otherwise issued. Please refer to the company website at <http://www.idti.com.tw/> for newest updates.

It is recommended that the user apply for membership, and login to <http://www.idti.com.tw/>.

In order to safeguard consumer rights, please do not randomly remove or tear the labels and stickers on this product, as this will affect the validity of the warranty date.

Safety Notice

Please carefully read the following notices, and save this manual as a reference for future use. Please follow all precautions and instructions labeled on the product.

Warnings

When using this product, keep away from water and liquids.

Set the product on a stable desktop or surface. Do not place on the floor or unstable trolleys, as accidental falling will cause severe damage to this product.

Do not block the ventilation opening on the case, to prevent overheating. Refrain from placing the product upon soft surfaces such as beds, sofas, or rugs, to prevent venting obstruction.

Keep product away from heat sources, such as ventilation or air ducts. Do not expose to direct sunlight.

Refrain from placing the product in a closed area, without proper airing or air conditioning.

Do not insert random objects into the casing plugs, especially objects which are easily flammable, or carry high voltage, or can cause short circuiting. The product must not come into contact with liquids.

Keep the product away from shaky surfaces, to prevent damages to internal devices, as well as battery leakage.

Do not install this product in unstable environments that may cause unforeseen damages to short-circuits hard drive, CD Roms of the lithium battery sets.

A ferrite core is attached on the USB cable, approximately 5 centimeters ' distance from the terminal body. Do not attempt to remove the core, as this is to reduce the electromagnetic interference from radiation.

Federal Communications Commission (FCC) Statement

15.21

You are cautioned that changes or modifications not expressly approved by the part responsible for compliance could void the user's authority to operate the equipment.

15.105(b)

This equipment has been tested and found to comply with the limits for a Class B digital device, pursuant to part 15 of the FCC rules. These limits are designed to provide reasonable protection against harmful interference in a residential installation. This equipment generates, uses and can radiate radio frequency energy and, if not installed and used in accordance with the instructions, may cause harmful interference to radio communications. However, there is no guarantee that interference will not occur in a particular installation. If this equipment does cause harmful interference to radio or television reception, which can be determined by turning the equipment off and on, the user is encouraged to try to correct the interference by one or more of the following measures:

- Reorient or relocate the receiving antenna.
- Increase the separation between the equipment and receiver.
- Connect the equipment into an outlet on a circuit different from that to which the receiver is connected.
- Consult the dealer or an experienced radio/TV technician for help.

Operation is subject to the following two conditions:

- 1) this device may not cause interference and
- 2) this device must accept any interference, including interference that may cause undesired operation of the device.

Product Maintenance

Do not attempt to self-repair this product, as untrained handling of product parts and case removal may result in exposure to high-voltage and other hazards. Product maintenance should be handled by trained personnel only.

In the following circumstances, please unplug the power cord from the power socket, and contact our service maintenance team:

- power cord or plug is damaged, cut, or torn
- liquid has been spilt onto product
- product has been exposed to rain, or humid environment

product has crashed, or exterior casing has been damaged

product is not functioning properly

product cannot be operated upon, even when following operation instructions

~~~~~

Note: Please follow operation instructions when adjusting the control keys; incorrect adjustments will damage the product, and will cause maintenance personnel to spend even more time on re-adjustment.

### ***Power Precautions***

Select a power cable with the appropriate voltage for your screen.

Install the screen close to the power source, with easy access to power sockets.

When terminating the power source, grasp the plug tightly and pull out in one swift motion. Do not pull on the cable itself, to disconnect power.

Keep the power cord free of pressure and treading.

In the following circumstances, disconnect the power plug from its socket:

- During long periods of non-use.
- When the power cord or plug is damaged.
- When the outer casing is damaged, or if the product has undergone crashing.
- When the product is functioning abnormally and requires maintenance.

### ***Security Precautions***

Keep monitors or other heavy objects off the power cord, to prevent fires or electrical shocks.

Do not expose the monitor to rain, high humidity, or dust.

Do not cover monitor slots or openings, to ensure proper ventilation.

Place the monitor in a well-ventilated area.

Do not place the monitor against an over-bright background; also avoid direct exposure to sunlight or other light sources.

Position the monitor slightly under horizontal eye-level, for the most comfortable viewing.

Take extra precautions when moving the monitor.



Avoid the monitor coming into collision with other objects. Also, do not scratch the screen surface, as it is extremely delicate.

### ***Maintenance***

Please be sure to unplug the power connector before cleaning.

Use a soft, clean cloth to wipe the outer casing, glass and control buttons. Do not use any cleansers which contain solvents, or corrosive ingredients, such as alcohol and benzene.

Keep sharp or invasive objects, such as pencils or screwdrivers, away from the screen, as these will scrape and damage the screen.

Do not insert objects or spill liquid onto the ventilation outlet, as this may lead to fires, electrical shocks, or malfunctioning of parts.

Do not attempt to self-repair this product, as unsupervised opening or removal of the protection casing can induce electrical shocks, or other hazards.

### ***Transportation***

If the product needs to be transported for maintenance, please ship it in its original packaging case.

### ***Wall Mounting***

The four holes on the back of the monitor conform entirely to VESA FRMPMI Standards, and can either be wall-mounted, or used with monitor arms. The 21.5 " panel weights approximately 6 kg, and should be installed as follows:

1. Take out the support rack (on the back).
2. Note that there are four M4 screw holes on the base, which conform entirely to VESA FRMPMI Standards, at 100 \*100 mm.

Note : This product does not come with screws or other mounting devices.

### ***Package Contents***

Upon opening the packaging case, please check the contents to see that the following are included:

LCD Monitor





AC 電源線



D-SUB 信號線

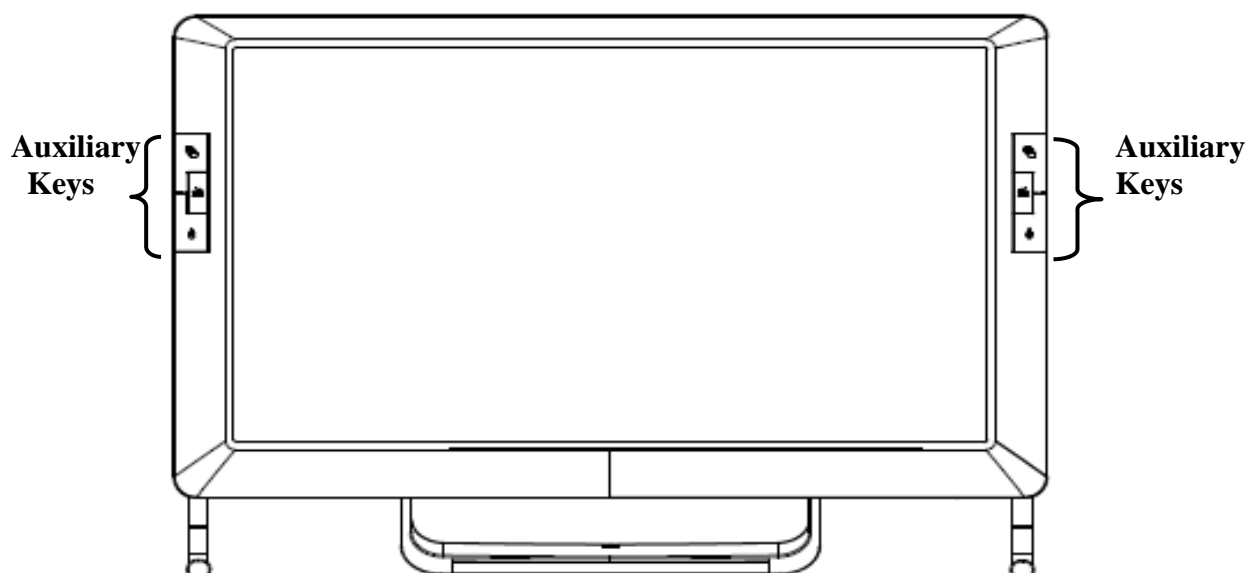


USB 線



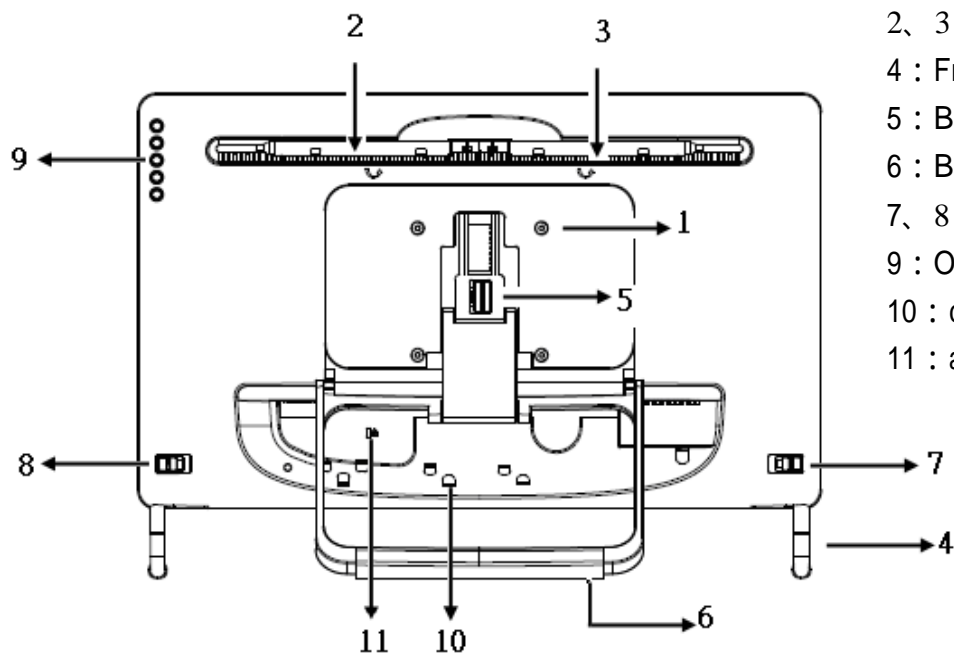
## ***Product Exterior***

Front view





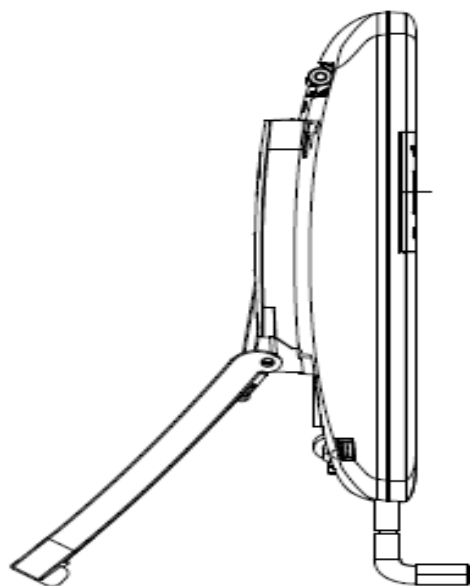
Back view



**OSD Control Button**

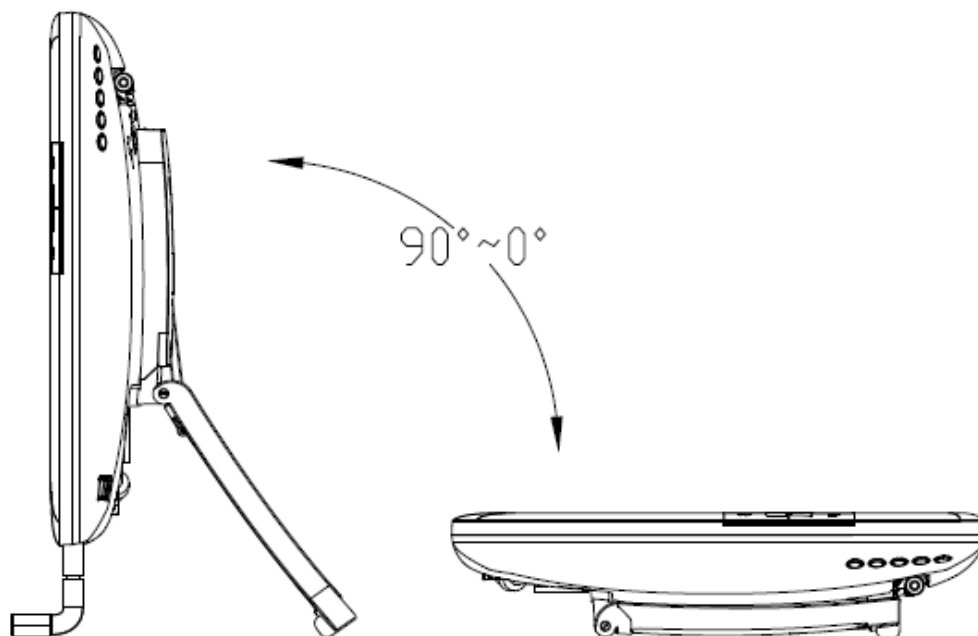
- 1 : suspension holes
- 2、 3 : light pen rack
- 4 : Front support
- 5 : Back support adjustment switch
- 6 : Back support rack
- 7、 8 : Front support
- 9 : OSD control buttons
- 10 : cable sorter
- 11 : anti-theft security locker

Side View

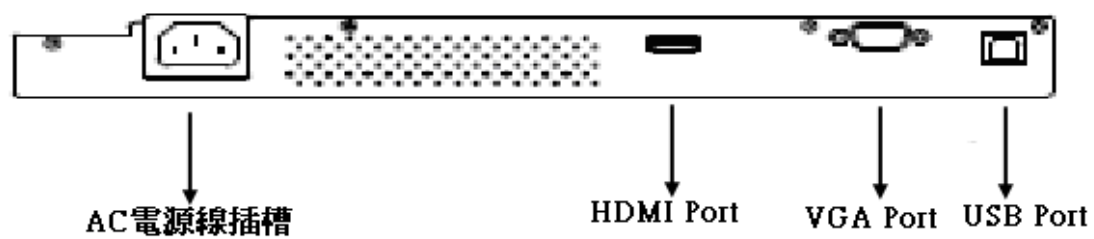




Screen viewing angle adjustment



Signal Connecting





## ***Auxiliary Function Program Installation***

### ***WINDOWS 7 / VISTA Installation Procedures***

Insert the installation CD, and initiate the IDTI\_TouchPack Setup.exe program.

After the installation wizard popup appears, click “next”



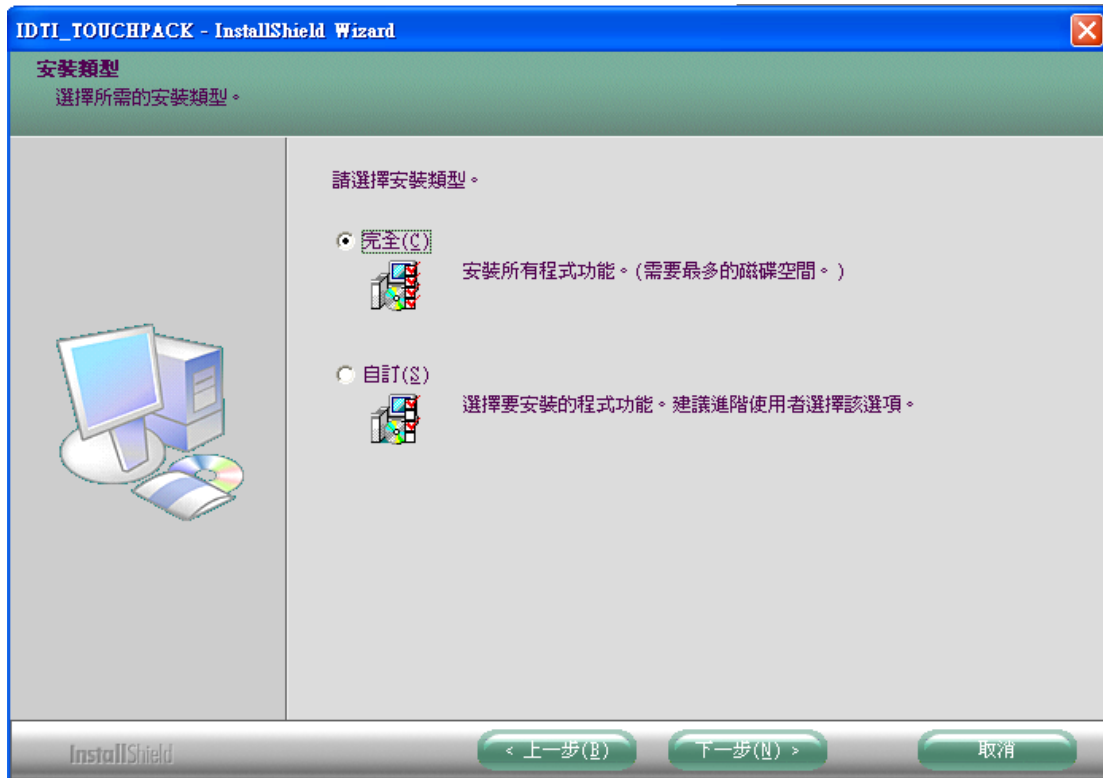


Click “I accept” for the License terms agreement; then click on “next”

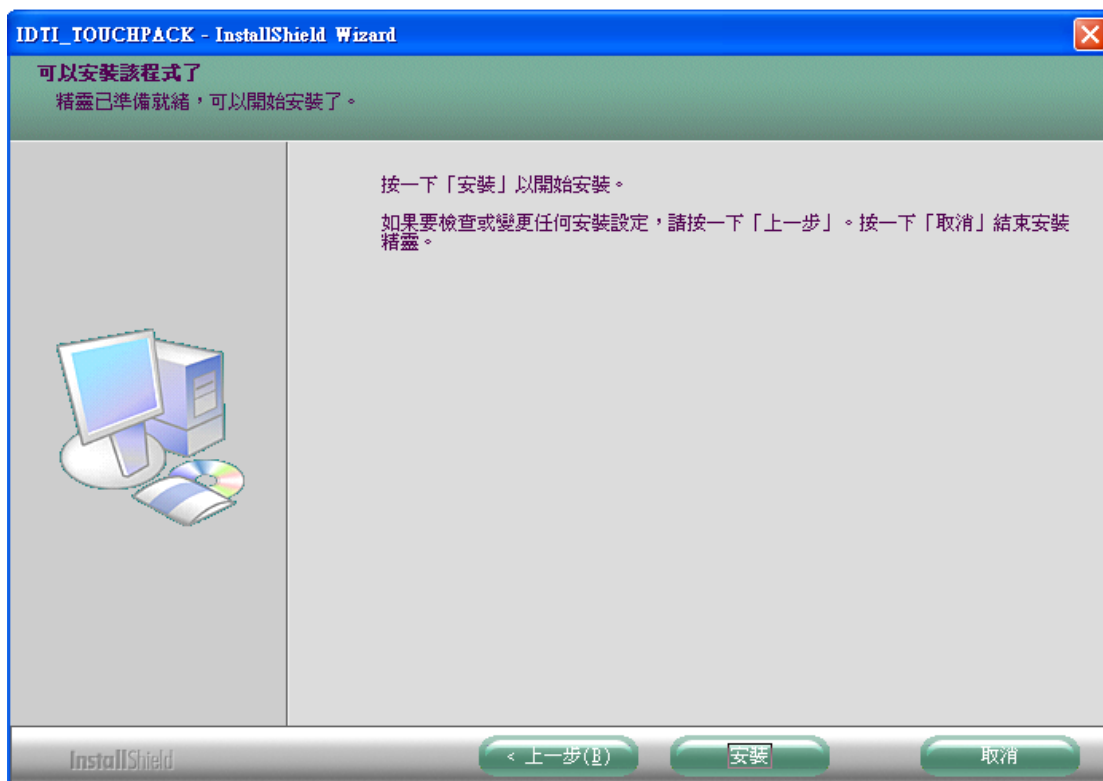


Select “installation type”. For “complete”, the installation program will automatically go to “C:\Program Files\IDTI\IDTI\_TOUCHPACK\”. If “customize” is selected, the user determines his own installation path. After completing installation, click on “next”



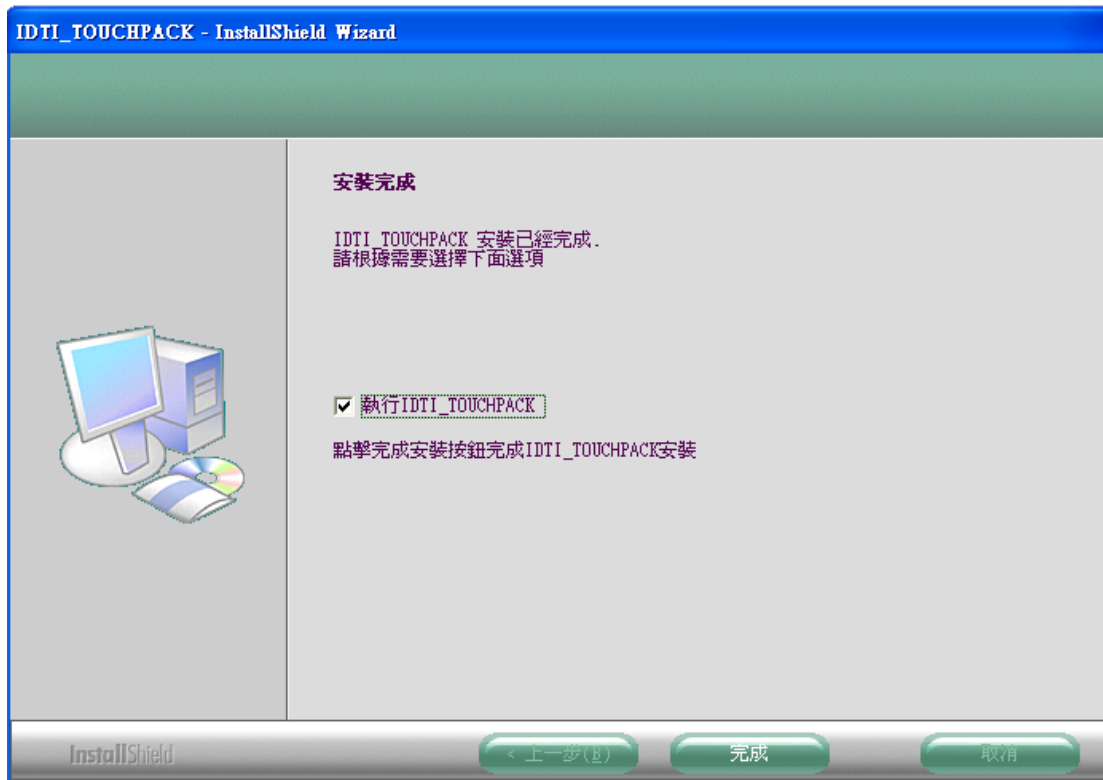


By now, the installation wizard should be ready. Click on “install” for the installation program to begin.

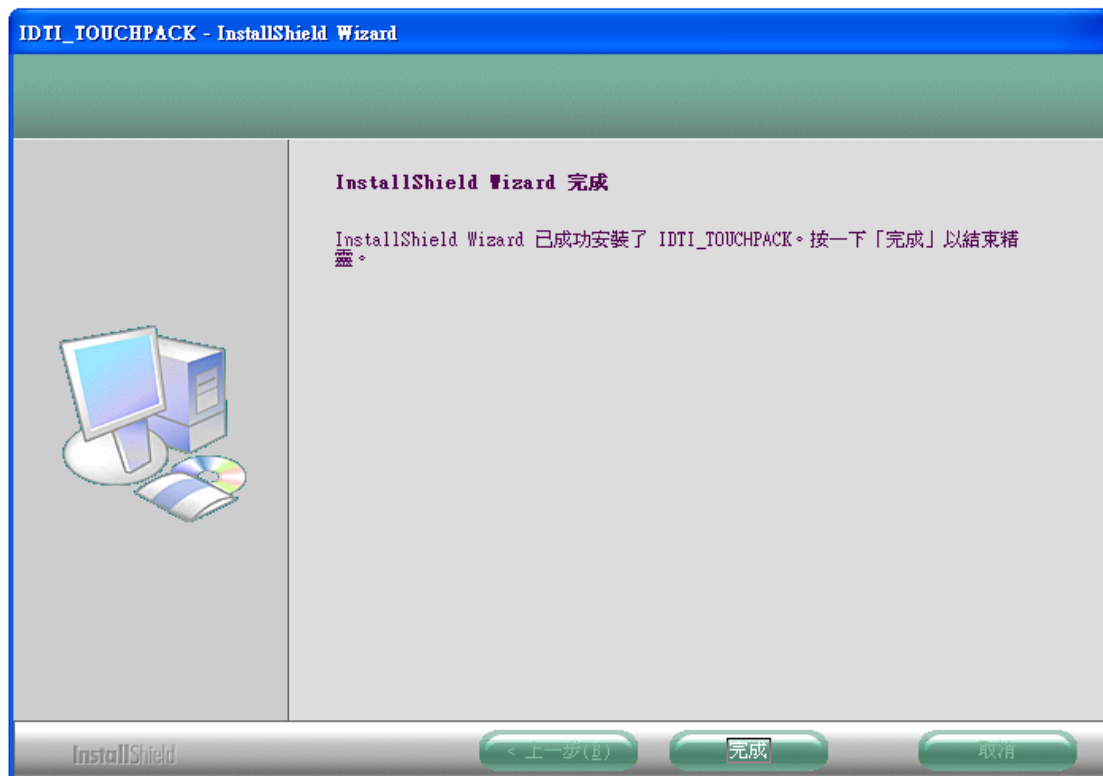


After installation has been completed, select “execute **IDTI\_TOUCHPACK**”, then select “complete”





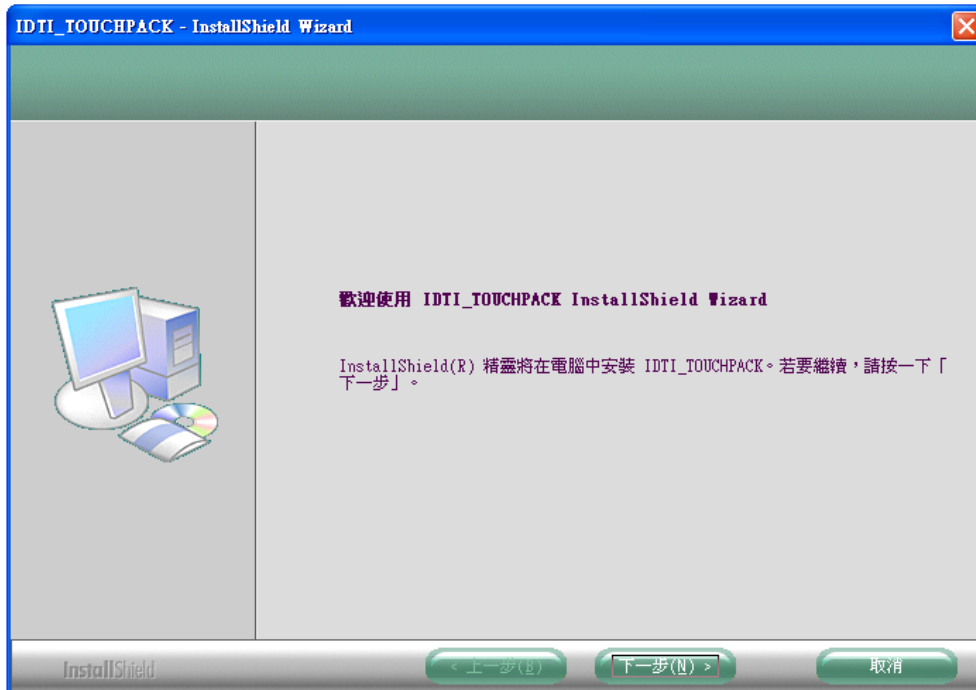
The Installation Wizard setup is now completed.



## WINDOWS XP Installation Procedures



Insert the installation CD and run the IDTI\_TouchPack Setup.exe program.  
After the installation wizard popup appears, select “next”.



Click “I accept” for the License terms agreement; then click on “next”



Select “installation type”. For “complete”, the installation program will automatically go to “C:\Program Files\IDTI\IDTI\_TOUCHPACK\”. If “customize” is selected, the user determines his



own installation path. After completing installation, click on “next”



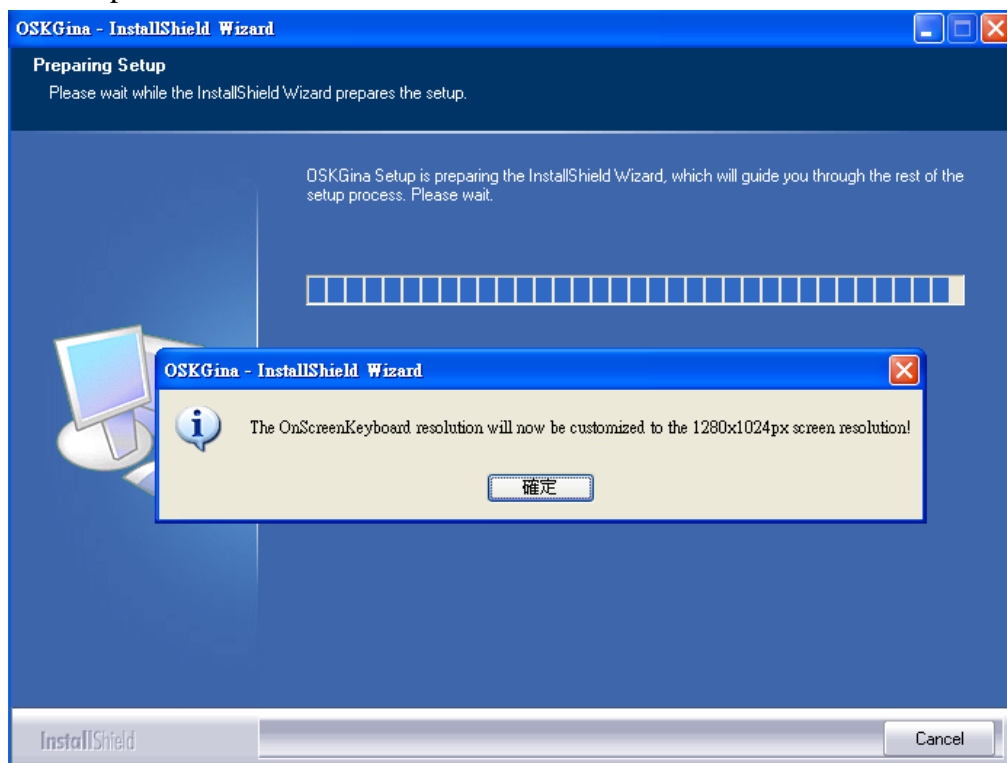
The installation wizard will now remind the user to click on the pop up for “Install Logon Keyboard on Windows XP”:



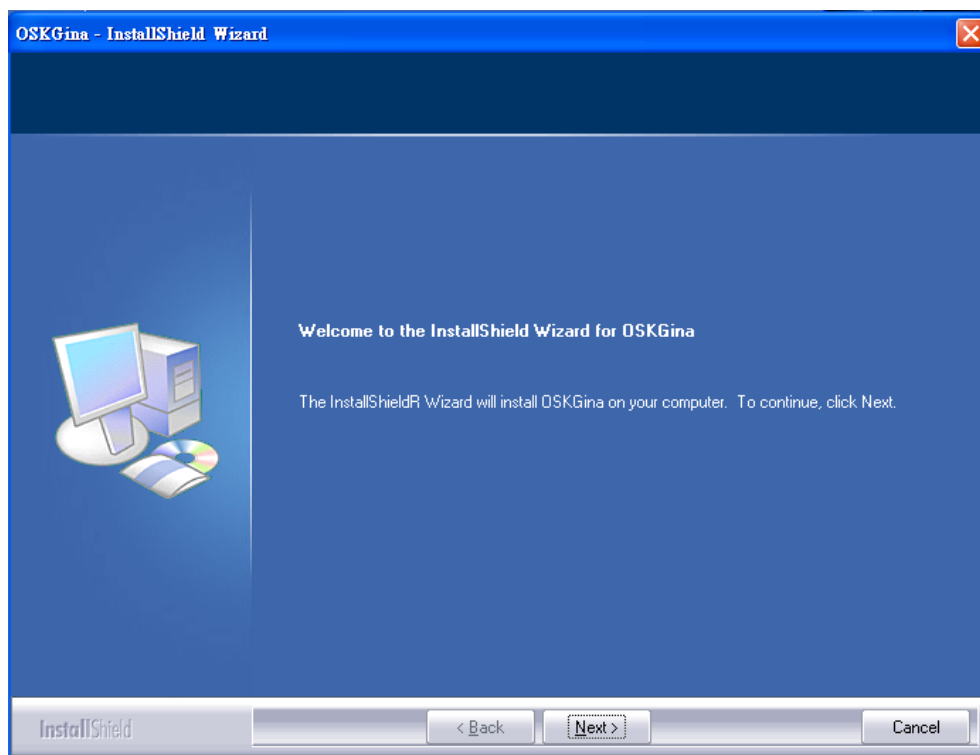
The monitor resolution as well as the onscreen Keyboard resolution will be automatically customized during the installation process. Click on “confirm” and the program will begin the Onscreen Keyboard



installation process.

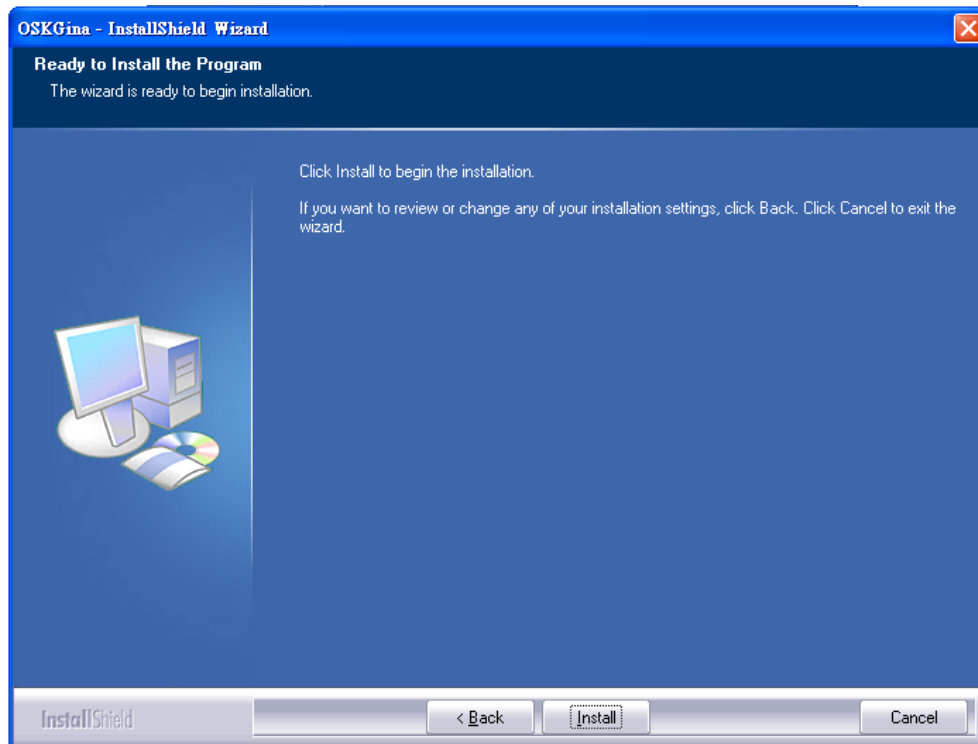


Choose “Next” to begin installation

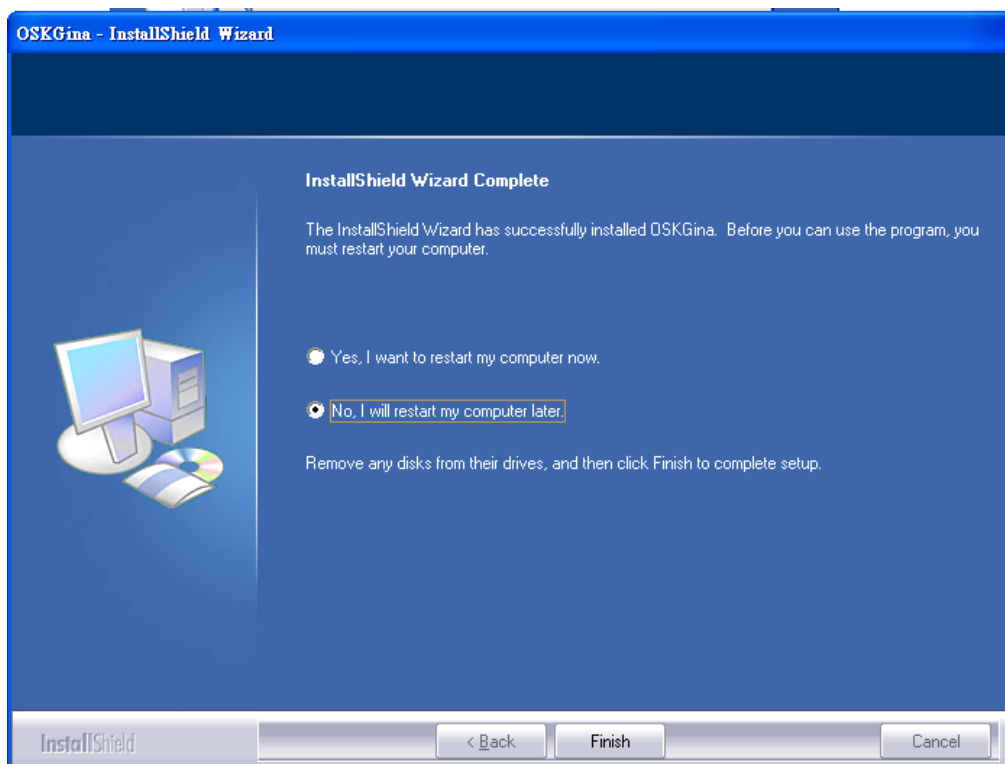


Choose “install” to initiate the program



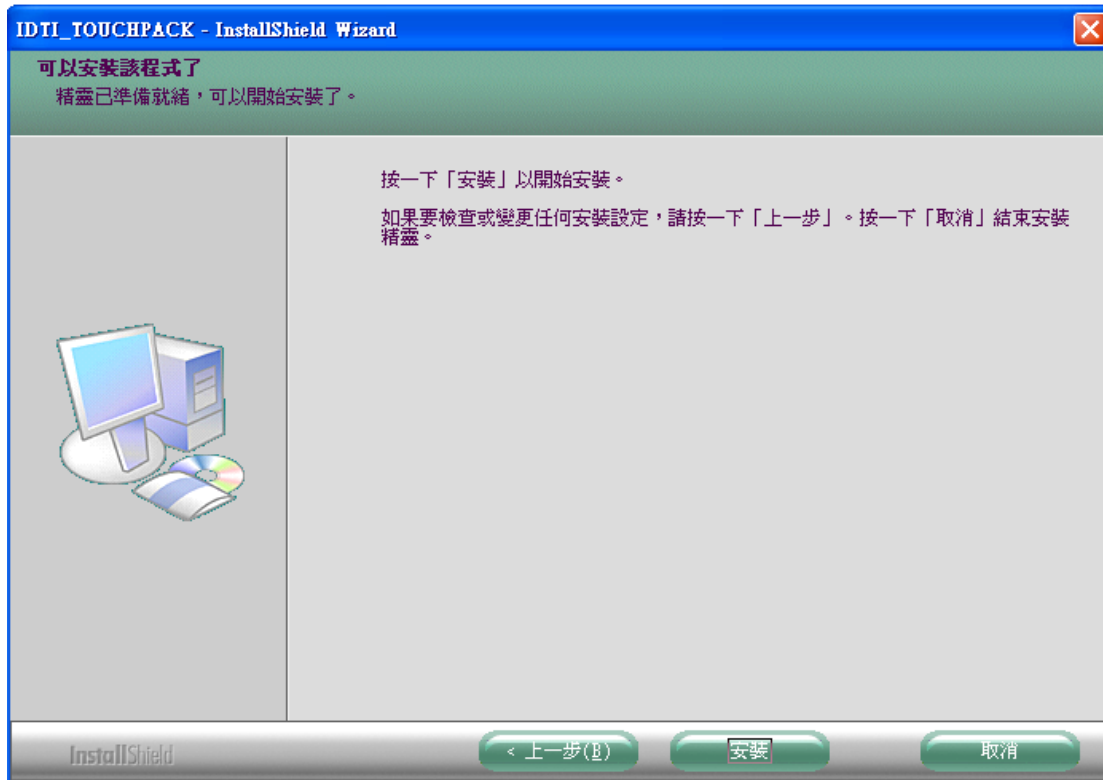


After installation has been completed, the installation wizard will show a restart popup. Click on “No” (the Onscreen Keyboard setup procedure requires a restart to be completed, but bypassing this step will not affect normal installation)



Wait for a few seconds until the IDTI\_TOUCHPACK installation program is ready. Select “install” for the program to commence.



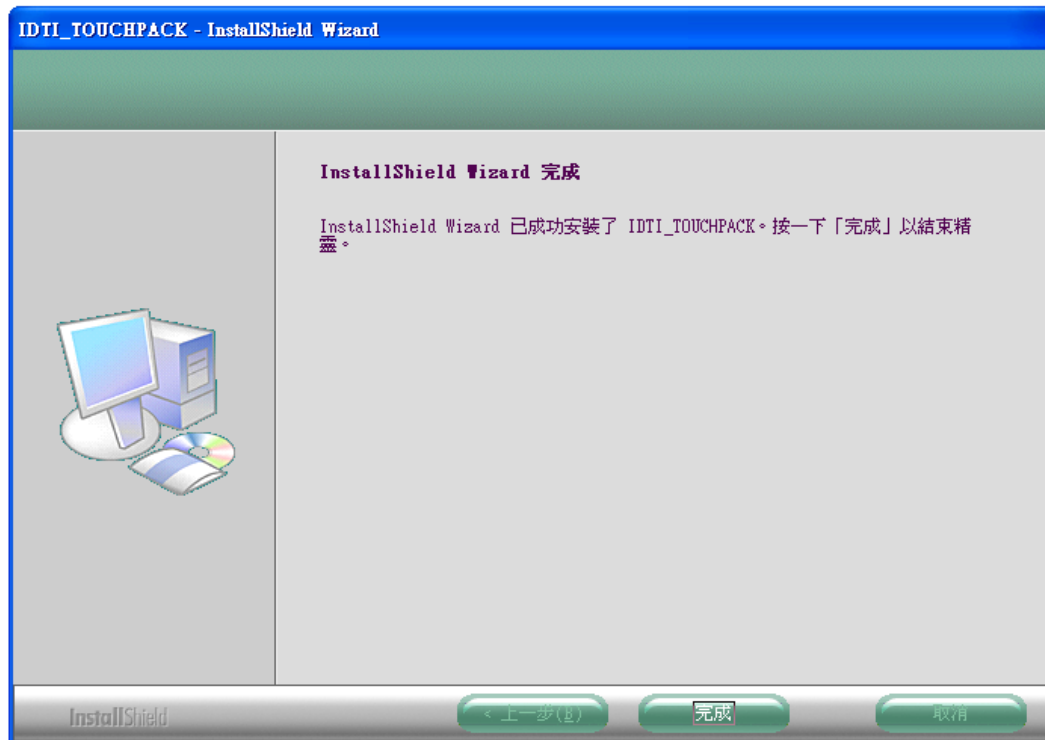


After installation has been completed, select “execute **IDTI\_TOUCHPACK**”, then click on “done”.



The installation wizard setup is now complete.





### *Auxiliary Function Setup*



After the IDTI\_TOUCHPACK program has started, right click the “P” icon on the system toolbar, to enable right hand or left hand user functions. The default setting is for right handed users.

**For the Right handed :** initiate the left auxiliary key, for right hand usage.

**For the Left handed :** initiate the right auxiliary key, for left hand usage.



### Auxiliary Key Functions

**Auxiliary Key 1 (both left and right auxiliary keys are the same):**

**Windows 7 / VISTA /XP : Windows 3D Flip or ALT + TAB**

Graphic card needs to be able to support AERO, and AERO functions should be initiated. Otherwise, use the ALT + TAB function.

## WINDOWS + TAB (3D Flip)



## ALT+TAB



**Auxiliary Key 2 (both left and right auxiliary keys are the same):**



startup or close the WINDOWS On Screen keyboard



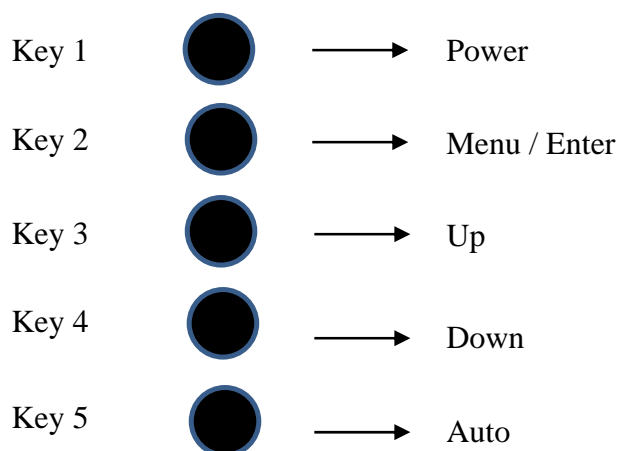
For WINDOWS 7 / VISTA users, the Onscreen Keyboard needs to be manually shut down, when UAC settings are on.

**Auxiliary Key 3 (both left and right auxiliary keys are the same):**

Switch the “touch down and move” function to “touch move”. Now the cursor will move, without clicking on any object.



## OSD Control Buttons



| No.   | Key                    | Function                                                                                                                                            |
|-------|------------------------|-----------------------------------------------------------------------------------------------------------------------------------------------------|
| Key 1 | POWER                  | Turn on and off the LCD Monitor                                                                                                                     |
| Key 2 | MENU                   | Menu display, for display settings adjustment                                                                                                       |
| Key 3 | + Move up              | To move upwards and increase values                                                                                                                 |
| Key 4 | - Move down            | To move downwards and decrease values                                                                                                               |
| Key 5 | Auto adjustment & Exit | To automatically adjust the LCD monitor to its optimized resolution (only effective during D-SUB input)<br>To exit menu, or return to previous menu |



## ***OSD Functions***

### ***OSD Menu***

Select MENU, and click on OSD to enter the OSD menu

#### Color Adjustment

1. click on the +/- keys for color adjustment; then select "MENU"
2. click on the +/- keys to select the item you would like to adjust.
3. Select "MENU" to operate
4. click on the +/- keys to adjust item settings.
5. Click on "AUTO" to return to the previous screen.
6. Repeat steps 2~5 to adjust other items, or select "AUTO" to return to the main menu



#### 1. Contrast

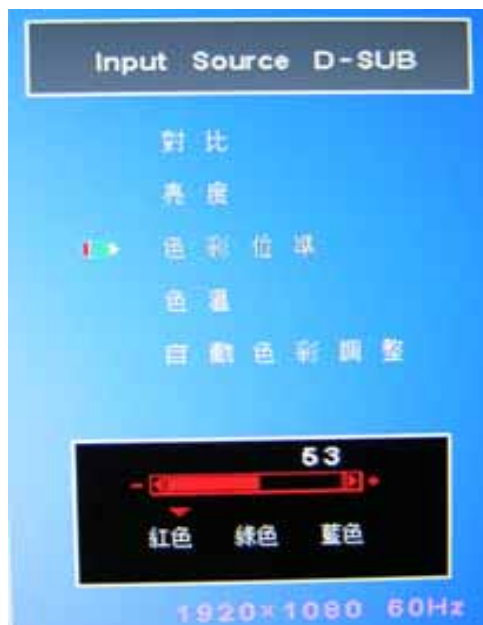




## 2. Brightness



## 3. Color Level Adjustment

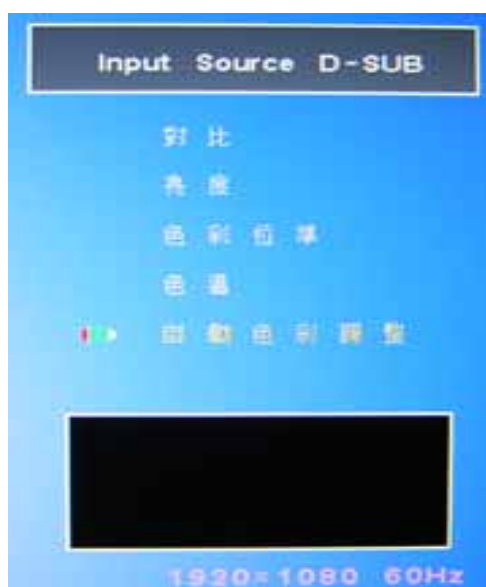




#### 4. Color Temperature



#### 5. Automatic Color Adjustment



#### Functions

| Adjustment  | Function                                                                                                                                                           | Mode       |
|-------------|--------------------------------------------------------------------------------------------------------------------------------------------------------------------|------------|
| Contrast    | press +/- keys to increase or lower the contrast level                                                                                                             | D-SUB/HDMI |
| Brightness  | Press +/- keys to brighten or darken the screen                                                                                                                    | D-SUB/HDMI |
| Color Level | Press +/- keys to select the color to be adjusted: red, green, or blue (Note 1)<br>Select MENU and press +/- keys to adjust the monitor to the desired color mode. | D-SUB/HDMI |



|                   |                                                                                        |            |
|-------------------|----------------------------------------------------------------------------------------|------------|
| Color Temperature | Press +/- keys to select different color temperatures<br>9300°K/ 6500°K/ 5800°K / USER | D-SUB/HDMI |
|-------------------|----------------------------------------------------------------------------------------|------------|

Note 1 : This item can only be adjusted when the color temperature is set at "USER" level

### Image Adjustment

1. Press +/- keys to go to " Image Adjustment " , then select "MENU" to enter.
2. Press +/- keys to select the item you would like to adjust.
3. Select "MENU" to enter and begin adjustment.
4. Press +/- keys to adjust the settings.
5. Press on "AUTO" to return to the previous screen.
6. Repeat steps 2~5to adjust other items, or press "AUTO" to return to the main menu.



### 1.Clock Setting





## 2.Phase Setting



## 3. Sharpness Setting

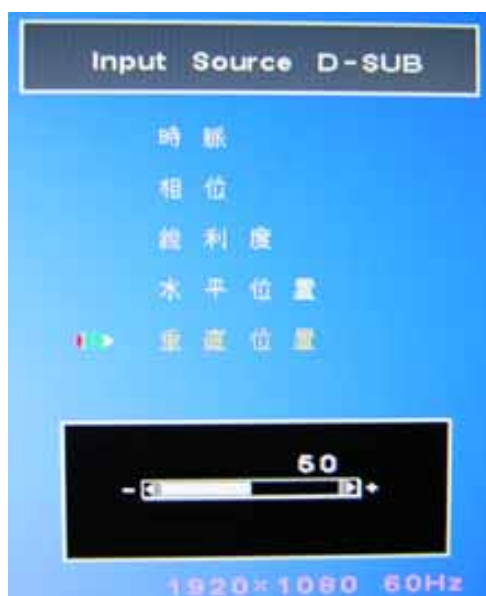




#### 4.Horizontal Positioning



#### 5.Vertical Positioning



#### Functions

| Adjustment | Function                                                     | Mode  |
|------------|--------------------------------------------------------------|-------|
| Clock      | Press +/- keys to reduce distortion and noise                | D-SUB |
| Phase      | Press +/- keys to adjust clarity and stability of LCD screen | D-SUB |



|                     |                                                                                           |            |
|---------------------|-------------------------------------------------------------------------------------------|------------|
| Sharpness           | Press +/- keys to adjust screen resolution. (4)For sharp contrast, (0) for mellower tones | D-SUB/HDMI |
| Horizontal Position | Press +/- keys to adjust the left and right positioning of the LCD screen                 | D-SUB      |
| Vertical Position   | Press +/- keys to adjust upper and lower positioning of the LCD screen                    | D-SUB      |

#### OSD Menu adjustment

1. Press +/- keys to adjust menu, then select "MENU" to enter.
2. Press +/- keys to select the item to be adjusted.
3. Press "MENU" to start adjustment.
4. Press +/- keys to adjust settings.
5. Press "AUTO" to return to the previous page.
6. Repeat steps 2~5 to adjust other items, or press "AUTO" to return to the main menu



#### 1. OSD Horizontal Positioning





## 2. OSD Vertical Positioning



## 3. OSD Timer





#### 4. Language Settings



#### Functions

| Adjustment             | Function                                                                    | Mode       |
|------------------------|-----------------------------------------------------------------------------|------------|
| Horizontal Positioning | Press +/- keys to adjust horizontal positioning of the OSD screen           | D-SUB/HDMI |
| Vertical Positioning   | Press +/- keys to adjust vertical positioning of the OSD screen             | D-SUB/HDMI |
| Timer Setting          | Press +/- keys to adjust the time elapsed before setting 0-30 seconds       | D-SUB/HDMI |
| Language Setting       | Press ◀ ▶ keys to select preferred language : Traditional Chinese / English | D-SUB/HDMI |

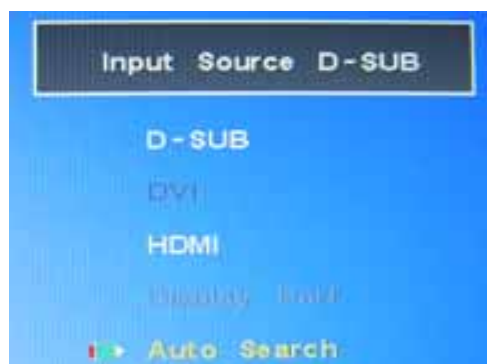


### Signal Source Settings

1. Press +/- keys to select signal settings. Then press "MENU" to enter.
2. Press +/- keys to select a signal
3. Press "MENU" to confirm the selection.
3. The screen will darken, then the menu will reappear. The upper right corner will show the selected signal setting.
5. If the selected signal does not exist, the screen will show "no signal" then revert to power-saving mode

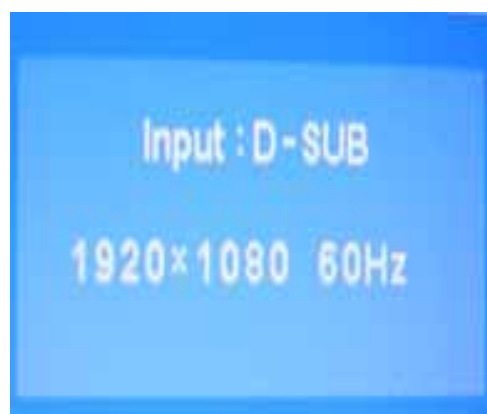


### 1. Select Input Signal

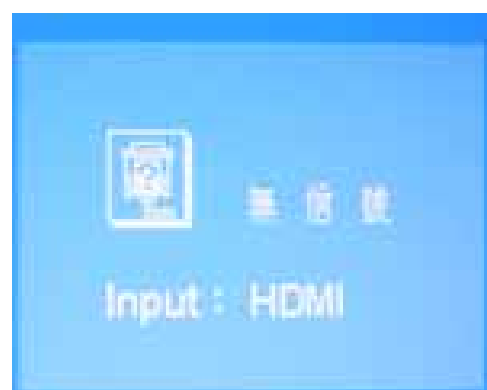




## 2. D-SUB (VGA)



## 3. No Signal



## Functions



| Adjustment  | Functions                                                | Mode       |
|-------------|----------------------------------------------------------|------------|
| D-SUB       | Select input signal D-SUB(VGA)                           | D-SUB      |
| HDMI        | Select input signal HDMI                                 | HDMI       |
| Auto Search | Auto select input signal (D-SUB is the default for both) | D-SUB/HDMI |

#### Reset

1. Press +/- keys and select "reset", then select "MENU" to enter
2. After reset is done, all settings will return to default settings.





**Technical Specification****Specification**

|                        |                                                                                                       |
|------------------------|-------------------------------------------------------------------------------------------------------|
| <b>LCD type</b>        | <b>TFT-LCD</b>                                                                                        |
| <b>Size</b>            | <b>21.5 Inch Diagonal</b>                                                                             |
| <b>Resolution</b>      | <b>1920(H)*1080(V) Pixel</b>                                                                          |
| <b>Pixel pitch</b>     | <b>0.24825(H)*0.24825(V) mm</b>                                                                       |
| <b>Active Area</b>     | <b>476.64(H)*268.11(V) mm</b>                                                                         |
| <b>Aspect Ratio</b>    | <b>16 : 9</b>                                                                                         |
| <b>Brightness</b>      | <b>300 cd/m<sup>2</sup> (Typ.)</b>                                                                    |
| <b>Contrast Ratio</b>  | <b>1000 : 1 (Typ.)</b>                                                                                |
| <b>Number of color</b> | <b>16.7M ( 6 bits+Hi-FRC )</b>                                                                        |
| <b>Response time</b>   | <b>5 ms ( Tr+Tf ) (Typ.)</b>                                                                          |
| <b>H-Freq (KHz)</b>    | <b>54.2 – 87.75 KHz</b>                                                                               |
| <b>V-Freq (Hz)</b>     | <b>50 – 75 Hz</b>                                                                                     |
| <b>Back-light</b>      | <b>4 CCFLs</b>                                                                                        |
| <b>Viewing Angle</b>   | <b>85/85/80/80 (CR&gt;10) Degree (Typ.)</b>                                                           |
| <b>Touch Support</b>   | <b>Multi-touch (2 points)</b>                                                                         |
| <b>OS Support</b>      | <b>XP / Vista / WIN 7 (Only in Windows 7 Home Premium and above editions can support multi touch)</b> |
| <b>Weight</b>          | <b>6 kg.</b>                                                                                          |
| <b>Dimension (mm)</b>  | <b>552 X 381.5 X100 (mm)</b>                                                                          |
| <b>Accessory</b>       | <b>VGA Cable / Power Cord / USB Cable / CD-ROM</b>                                                    |
| <b>Guarantee</b>       | <b>3 Year</b>                                                                                         |