



www.nemko.com

Nemko Italy S.p.A., Via del Carroccio 4, 20853, Biassono, Italy.

Report number: 272549TRFMPE
Apparatus: VS4000 806-870
Applicant: Selex ES S.p.A.
Piazza Monte Grappa,4 -00195 Roma- Italy
FCC ID: X5YVS4000-806-870
Test specification:

MPE ASSESSMENT

**Federal Communications Commission Office of Engineering & Technology
Evaluating Compliance with FCC Guidelines for Human Exposure to Radiofrequency Electromagnetic Fields**

Reviewed by: 2014-11-12
Signature  Date
G. Curioni, Wireless/EMC Specialist

Tested by: 2014/11/12
Signature  Date
D. Guarnone, Wireless/EMC Specialist

Nemko S.p.A. authorizes the applicant to reproduce this report provided it is reproduced in its entirety and for use by the company's employees only. Any use which a third party makes of this report, or any reliance on or decisions to be made based on it, are the responsibility of such third parties.

Nemko S.p.A. accepts no responsibility for damages, if any suffered by any third party as a result of decisions made or actions based on this report.

This report shall not be reproduced except in full without the written approval of the testing laboratory.

Table of contents

Section 1: Report summary.....	3
Section 2: Equipment under test	4
2.1 Identification of equipment under test (EUT)	4
2.2 Accessories and support equipment	5
2.3 EUT description	6
2.4 Technical specifications of the EUT	6
2.5 EUT setup diagram.....	7
2.6 Operation of the EUT during testing	8
2.7 Modifications incorporated in the EUT	8
Section 3: Test conditions	9
3.1 Deviations from laboratory tests procedures.....	9
3.2 Test conditions, power source and ambient temperatures.....	9
3.3 Measurement uncertainty	9
3.4 Test equipment.....	9
Section 4: Result summary	10
4.1 MPE: Test results	10
Appendix A: Test results	11
MPE CALCULATION	11
MPE CALCULATION, continue.....	12

 Nemko Italy S.p.A. Via del Carroccio 4, 20853 Biassono, Italy.	Section 1: Report summary
	Report Number: 272549TRFMPE
	Specification: --

Section 1: Report summary

This report contains an assessment of apparatus against specifications based upon tests carried out on samples submitted at Nemko Italy SpA.

Test specification:

Federal Communications Commission Office of Engineering & Technology
Evaluating Compliance with FCC Guidelines for Human Exposure to Radiofrequency Electromagnetic Fields

Compliance status:	Complies
Exclusions:	None
Non-compliances:	None
Report release history:	Original release
Test location:	SELEX ES Via Albert Einstein, 35 Campi di Bisenzio Firenze, Italy.
Registration number:	481407 (10 m Semi anechoic chamber)

These tests were conducted on a sample of the equipment for the purpose of demonstrating compliance Evaluating Compliance with FCC Guidelines for Human Exposure to Radiofrequency Electromagnetic Fields
Note that the results contained in this report relate only to the items tested and were obtained in the period between the date of initial receipt of samples and the date of issue of the report.

This test report has been completed in accordance with the requirements of ISO/IEC 17025. All results contain in this report are within Nemko Italy's ISO/IEC 17025 accreditation.

Nemko Italy SpA. authorizes the applicant to reproduce this report provided it is reproduced in its entirety and for use by the company's employees only.

Any use which a third party makes of this report, or any reliance on or decisions to be made based on it, are the responsibility of such third parties. Nemko Italy SpA. accepts no responsibility for damages, if any, suffered by any third party as a result of decisions made or actions based on this report.



Nemko Italy S.p.A.
Via del Carroccio 4, 20853, Biassono, Italy

Section 2: Equipment under test


Report Number: 272549TRFMPE

Specification: --

Section 2: Equipment under test

2.1 Identification of equipment under test (EUT)

The following information identifies the EUT under test:

Type of equipment:	Mobile Radio Unit
Product marketing name:	VS4000
Model :	VS4000 806-870
Code :	774-1052/01
Serial number:	A0001
FCC ID:	X5YVS4000-806-870
Date of receipt:	2014-11-03
Label	



Nemko Italy S.p.A.
Via del Carroccio 4, 20853, Biassono, Italy

Section 2: Equipment under test

Report Number: 272549TRFMPE

Specification: --

2.2 Accessories and support equipment

The following information identifies accessories used to exercise the EUT during testing:

Item # 1

Type of equipment:	Digital Radio Test Set
Brand name:	IFR
Model name or number:	3901
Serial number:	297001035
Nemko sample number:	--
Connection port:	RF
Cable length and type:	--

Item # 2

Type of equipment:	Portable Field Meter + Electric Field Probe
Brand name:	PMM
Model name or number:	8053 + EP330
Serial number:	298001223
Nemko sample number:	0220J00421 + 1010J91224
Connection port:	RF
Cable length and type:	--

Antenna: 31 cm



Nemko Italy S.p.A.
Via del Carroccio 4, 20853, Biassono, Italy

Section 2: Equipment under test

Report Number: 272549TRFMPE

Specification: --

Section 2: Equipment under test, continued

2.3 EUT description

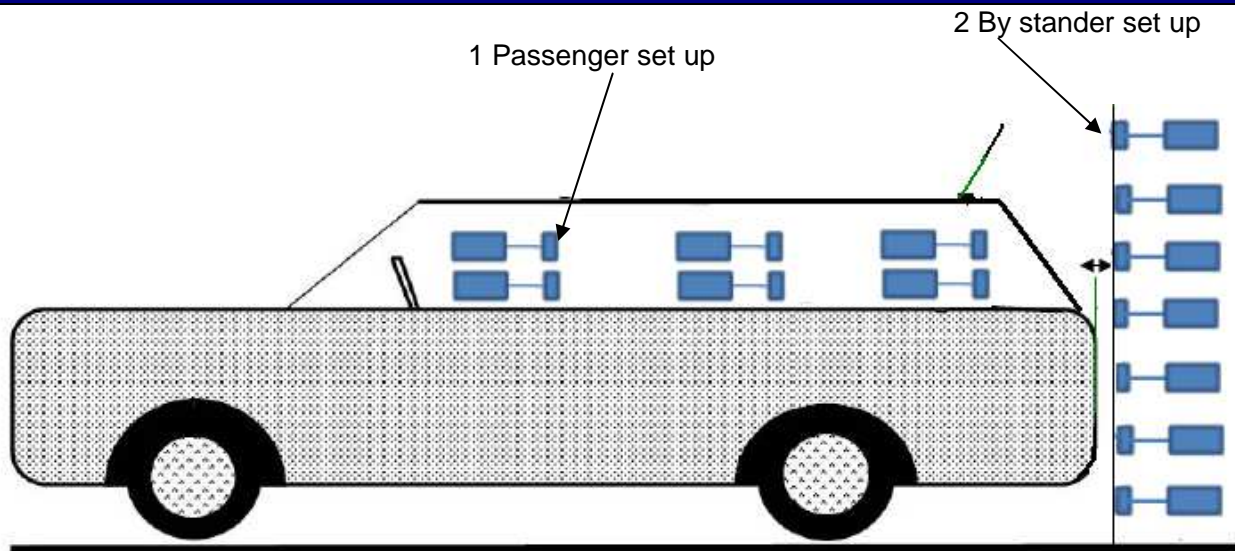
- Mobile Radio Unit: with the following accessories:	
FPG3 vehicular console	972-0562/03.01
Vehicular Radio FPG3 Cable	HPI-0127/01
Vehicular multiple accessories cable	HPI-0128/01
FPG3 Vehicular Environmental Microphone	HPI-0191/01
FPG3 Gooseneck PTT Button	HPI-0186/01
Hand-held PTT microphone IP54	HPI-0103/01
Vehicular Speaker	774-0139/02
Vehicular Speaker cable	HPI-1315/01
ANTENNA:	68720-42/023

2.4 Technical specifications of the EUT

Operating frequency:	809- 824/854 - 869 MHz
Modulation type:	Π/4DQPSK
Occupied bandwidth:	25 kHz
Emission designator:	21K0D1E, 21K0D1W, 21K0D1D
Antenna type:	Equipment that has an external 50 Ω RF connector
Power source	Battery operated
Temperature range:	-25 to + 55°C

Section 2: Equipment under test, continued

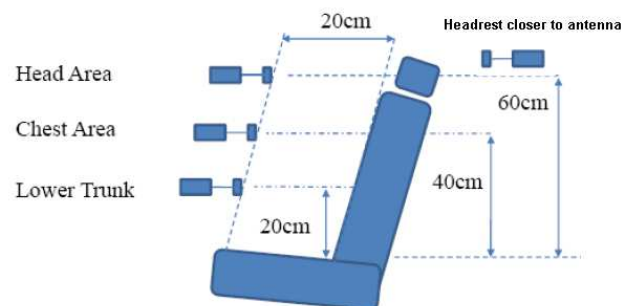
2.5 EUT setup diagram



Seat scan areas
(Applicable to both front and back seats)

Meter - Probe

  Probe diameter is 5.5cm





Nemko Italy S.p.A.
Via del Carroccio 4, 20853, Biassono, Italy

Section 2: Equipment under test

Report Number: 272549TRFMPE

Specification: --

2.6 Operation of the EUT during testing

Transmitting at maximum power and normal modulation to:

- 1) 809.0125 MHz
- 2) 823.9875 MHz
- 3) 854.0125 MHz
- 4) 868.9875 MHz

2.7 Modifications incorporated in the EUT

There were no modifications performed to the EUT during this assessment.



Nemko Italy S.p.A.
Via del Carroccio 4, 20853, Biassono, Italy

Section 3: Test conditions

Report Number: 272549TRFMPE

Specification: --

Section 3: Test conditions

3.1 Deviations from laboratory tests procedures

No deviations were made from laboratory test procedures.

3.2 Test conditions, power source and ambient temperatures

Normal temperature, humidity and air pressure test conditions	Temperature: 15–30 °C Relative humidity: 20–75 % Air pressure: 860–1060 hPa When it is impracticable to carry out tests under these conditions, a note to this effect stating the ambient temperature and relative humidity during the tests shall be recorded and stated.
Power supply range:	The normal test voltage for equipment to be connected to the mains shall be the nominal mains voltage. For the purpose of the present document, the nominal voltage shall be the declared voltage, or any of the declared voltages $\pm 5\%$, for which the equipment was designed.


3.3 Measurement uncertainty

Nemko S.p.A. measurement uncertainty has been calculated using the standard CISPR 16-4-2 "Specification for radio disturbance and immunity measuring apparatus and methods – Part 4-2: Uncertainties, statistics and limit modeling – Uncertainty in EMC measurements". All calculations have been performed to provide a confidence level of 95 % and can be found in Nemko S.p.A. document WML1002.

3.4 Test equipment

Equipment	Manufacturer	Model No.	Asset/Serial No.	Next cal.
Portable Field Meter	PMM	8053	0220J00421	2016/10
Electric Field Probe	PMM	EP330	1010J91224	2016/10

Note: N/A = Not Applicable, NCR = No Cal Required, COU = CAL On Use
(*) Equipment supplied by manufacturer's

 Nemko Italy S.p.A. Via del Carroccio 4, 20853, Biassono, Italy	Section 4: Results Summary
	Report Number: 272549TRFMPE
	Specification: --

Section 4: Result summary

4.1 MPE: Test results

Part	Test method	Test description	Required	Result
§--	§--	MPE calculation	Y	Pass
Note:				



Nemko Italy S.p.A.
Via del Carroccio 4, 20853, Biassono, Italy

Appendix A: Test results

Report Number: 272549TRFMPE

Specification: --

Appendix A: Test results

MPE CALCULATION

(a) Mobile Devices

This section describes the requirements of Section 2.1091 of the FCC's Rules (47 CFR § 2.1091) that apply to "mobile" devices. For purposes of these requirements mobile devices are defined as transmitters designed to be used in other than fixed locations and to generally be used in such a way that a separation distance of at least 20 centimetres is normally maintained between the transmitter's radiating structure(s) and the body of the user or nearby persons. In this context, the term "fixed location" means that the device is physically secured at one location and is not able to be easily moved to another location. Transmitting devices designed to be used by consumers or workers that can be easily re-located, such as wireless devices associated with a personal computer, are considered to be mobile devices if they meet the 20 centimetres separation requirement.

A fundamental aspect of the exposure guidelines is that they apply to power densities or the squares of the electric and magnetic field strengths that are spatially averaged over the body dimensions. Spatially averaged RF field levels most accurately relate to estimating the whole body averaged SAR that will result from the exposure and the MPEs specified in Table 1 of Appendix A are based on this concept. This means that local values of exposures that exceed the stated MPEs may not be related to non-compliance if the spatial average of RF fields over the body does not exceed the MPEs. Further discussion of spatial averaging as it relates to field measurements can be found in Section 3 of this bulletin and in the ANSI/IEEE and NCRP reference documents noted there.

Assessment was performed with mobile radio installed inside the vehicle at test specified distance and test locations.

1) External bystander MPE measurements:

Antenna is located in the rear side of roof.

Mpe measurement for by stander conditions are determined by taking the average of 10 measurements in a 2 m vertical line for each of three by stander test locations with 20 cm height increment with antenna to probe separation distances of 72 cm directly behind the vehicle, 110 cm (45 radial), 102 cm (90 radial).

The measuring probe is positioned orthogonal to antenna (typically parallel to ground with a vertically mounted antenna) and aimed directly at antenna axis.

These measurements are representative of person other than the operator standing next to the vehicle.

2) Internal Passenger vehicle MPE measurements

Antenna is located in the rear side of roof at a minimum distance of Backseats passenger.

User are instructed, per installation manual to mount antenna on the roof only if a minimum distance of can't be achieved.

MPE measurements for passenger front seat and backseat conditions are determined by taking the average of three measurements (Head, Chest, and lower Trunk) inside the vehicle for both the front and back seats.

The probe handle is oriented parallel to the ground and pointed towards to the back of vehicle.

The probe is scanned continuously along three test axis which are parallel to seat angle and are 20 cm from seat surface. One test axis is at the head height, another is at the chest height and another is at lower Trunk height.

The MPE is determined by averaging these three maximum values



Nemko Italy S.p.A.
Via del Carroccio 4, 20853, Biassono, Italy

Appendix A: Test results

Report Number: 272549TRFMPE

Specification: --

MPE CALCULATION, continue..

MPE limits:

Frequency Range (MHz)	FCC OET Bulletin 65 Supplement C mW/cm ²	IEEE C95.1 1992/1999 mW/cm ²	RSS 102 issue 4 – 2010 W/m ²
30 – 300	0.2		*2.0
10 – 400			
100 – 300		0.2	
100 – 400			
300 – 1,500	f/1,500		f/150
400 – 2,000			
300 – 15,000		f/1,500	
1,500 – 15,000			10.0
1,500 – 100,000	1.0		
2,000 – 100,000			
2,000 – 300,000			

*Power density limit is applicable at frequencies greater than 100MH

Test date: 2014-11-11

Test results: Pass



Nemko Italy S.p.A.
Via del Carroccio 4, 20853, Biassono, Italy

Appendix A: Test results

Report Number: 272549TRFMPE

Specification: --

Test data

Bystander, test position 1

Roof	Test position	E/H Field	Angle (degree)	Antenna model	Max PWR (W)	Nominal Pwr (W)	Test Frequency (MHz)	Max calculation P.D. (mW/cm ²)	FCC Limit (mW/cm ²)	% to specific Limit
Roof	1	E Field	--	68720-42/023	11.7	10	809.0125	0.002	0.539	0.419
				68720-42/023	11.9	10	823.9875	0.002	0.549	0.373
				68720-42/023	11.7	10	854.0125	0.003	0.569	0.461
				68720-42/023	11.3	10	868.9875	0.003	0.579	0.593

Bystander, test position 2

Roof	Test position	E/H Field	Angle (degree)	Antenna model	Max PWR (W)	Nominal Pwr (W)	Test Frequency (MHz)	Max calculation P.D. (mW/cm ²)	FCC Limit (mW/cm ²)	% to specific Limit
Roof	2	E Field	--	68720-42/023	11.7	10	809.0125	0.002	0.539	0.461
				68720-42/023	11.9	10	823.9875	0.003	0.549	0.513
				68720-42/023	11.7	10	854.0125	0.002	0.569	0.366
				68720-42/023	11.3	10	868.9875	0.004	0.579	0.769

Bystander, test position 3

Roof	Test position	E/H Field	Angle (degree)	Antenna model	Max PWR (W)	Nominal Pwr (W)	Test Frequency (MHz)	Max calculation P.D. (mW/cm ²)	FCC Limit (mW/cm ²)	% to specific Limit
Roof	3	E Field	--	68720-42/023	11.7	10	809.0125	0.002	0.539	0.405
				68720-42/023	11.9	10	823.9875	0.002	0.549	0.407
				68720-42/023	11.7	10	854.0125	0.003	0.569	0.466
				68720-42/023	11.3	10	868.9875	0.004	0.579	0.688



Nemko Italy S.p.A.
Via del Carroccio 4, 20853, Biassono, Italy

Appendix A: Test results

Report Number: 272549TRFMPE

Specification: --

Test data

Passenger, front seat, left

Roof	Test position	E/H Field	Angle (degree)	Antenna model	Max PWR (W)	Nominal Pwr (W)	Test Frequency (MHz)	Max calculation P.D. (mW/cm ²)	FCC Limit (mW/cm ²)	% to specific Limit
Roof	Passenger, front seat, left	E Field	--	68720-42/023	11.7	10	809.0125	0.001	0.539	0.153
				68720-42/023	11.9	10	854.0125	0.002	0.569	0.421
				68720-42/023	11.7	10	823.9875	0.000	0.549	0.070
				68720-42/023	11.3	10	868.9875	0.000	0.579	0.068

Passenger, front seat, right

Roof	Test position	E/H Field	Angle (degree)	Antenna model	Max PWR (W)	Nominal Pwr (W)	Test Frequency (MHz)	Max calculation P.D. (mW/cm ²)	FCC Limit (mW/cm ²)	% to specific Limit
Roof	Passenger, front seat, right	E Field	--	68720-42/023	11.7	10	809.0125	0.001	0.539	0.138
				68720-42/023	11.9	10	823.9875	0.000	0.549	0.082
				68720-42/023	11.7	10	854.0125	0.003	0.569	0.493
				68720-42/023	11.3	10	868.9875	0.001	0.579	0.209



Nemko Italy S.p.A.
Via del Carroccio 4, 20853, Biassono, Italy

Appendix A: Test results

Report Number: 272549TRFMPE

Specification: --

Test data

Passenger, back seat right

Roof	Test position	E/H Field	Angle (degree)	Antenna model	Max PWR (W)	Nominal Pwr (W)	Test Frequency (MHz)	Max calculation P.D. (mW/cm ²)	FCC Limit (mW/cm ²)	% to specific Limit
Roof	Passenger back seat right	E Field	--	68720-42/023	11.7	10	809.0125	0.001	0.539	0.151
				68720-42/023	11.9	10	823.9875	0.000	0.549	0.082
				68720-42/023	11.7	10	854.0125	0.001	0.569	0.104
				68720-42/023	11.3	10	868.9875	0.003	0.579	0.578

Passenger, back seat, left

Roof	Test position	E/H Field	Angle (degree)	Antenna model	Max PWR (W)	Nominal Pwr (W)	Test Frequency (MHz)	Max calculation P.D. (mW/cm ²)	FCC Limit (mW/cm ²)	% to specific Limit
Roof	Passenger back seat left	E Field	--	68720-42/023	11.7	10	809.0125	0.001	0.539	0.193
				68720-42/023	11.9	10	823.9875	0.006	0.549	1.015
				68720-42/023	11.7	10	854.0125	0.001	0.569	0.195
				68720-42/023	11.3	10	868.9875	0.001	0.579	0.221

Remarks: Calculation P.D.= Average over body x Probe calibration factor x Duty Cycle

Max calculation P.D.= Average over body x Probe calibration factor x Duty Cycle x Max PWR/Nominal Pwr

Probe calibration factor=1

Duty Cycle=0.25



Nemko Italy S.p.A.
Via del Carroccio 4, 20853, Biassono, Italy

Appendix A: Test results

Report Number: 272549TRFMPE

Specification: --

Test data

Bystander, position 1

				Bytzer-40r (B5) Partition mW/cm2										E.U.T.	Average over the body (mW/cm ²)	Calc.P.D. (mW/cm ²)	Max.Calc.P.D. (mW/cm ²)	FOO Limit (mW/cm ²)
T/FREQUENCY	Max.pwr	Initial.pwr	PROBE CAL FACTOR	20 cm	40 cm	60 cm	80 cm	100 cm	120 cm	140 cm	160 cm	180 cm	200 cm	Max.T/Factor				
899.0125	11.7	10	1.0152	0.0000	0.0000	0.0000	0.0000	0.0020	0.0020	0.001	0.024	0.031	0.027	0.25	0.009	0.002	0.003	0.529
923.9175	11.9	10	1.0135	0.0000	0.0000	0.0000	0.0000	0.0050	0.0050	0.005	0.010	0.024	0.02	0.25	0.000	0.002	0.002	0.549
954.0125	11.7	10	1.0100	0.0000	0.0000	0.0000	0.0000	0.0020	0.0120	0.022	0.032	0.024	0.009	0.25	0.010	0.003	0.003	0.569
966.9175	11.3	10	1.0032	0.0000	0.0000	0.0000	0.0000	0.0020	0.0100	0.021	0.04	0.032	0.024	0.25	0.013	0.003	0.004	0.579

Bystander, position 2

				Bystander (B5) Partition mW/cm2											E.U.T.	Average over the body (mW/cm ²)	Calc.P.D. (mW/cm ²)	Max.Calc.P.D. (mW/cm ²)	FOO Limit (mW/cm ²)
T/FREQUENCY	Mesur	Initial power	PROBE CAL FACTOR	20 cm	40 cm	60 cm	80 cm	100 cm	120 cm	140 cm	160 cm	180 cm	200 cm	Max T/F factor					
899.9125	11.7	10	1.0152	0	0	0	0.003	0.001	0.012	0.021	0.031	0.034	0.016	0.25	0.010	0.002	0.003	0.529	
923.9175	11.9	10	1.0135	0	0	0	0.001	0.003	0.005	0.02	0.033	0.024	0.02	0.25	0.011	0.003	0.003	0.549	
954.9125	11.7	10	1.0100	0	0	0.001	0.004	0.006	0.006	0.016	0.034	0.02	0.014	0.25	0.001	0.002	0.002	0.569	
966.9175	11.3	10	1.0032	0	0	0	0.003	0.019	0.011	0.012	0.02	0.027	0.03	0.25	0.017	0.004	0.005	0.579	

Bystander, position 3

				Bystander (B5) Partition mW/cm2											E.U.T.	Average over the body (mW/cm ²)	Calc P.D. (mW/cm ²)	Max Calc P.D. (mW/cm ²)	FOO Limit (mW/cm ²)
T/FREQUENCY	Mesur	Initial power	PROBE CAL FACTOR	20 cm	40 cm	60 cm	80 cm	100 cm	120 cm	140 cm	160 cm	180 cm	200 cm	Max T/F factor					
899.9125	11.7	10	1.0152	0	0	0	0	0	0.004	0.004	0.025	0.023	0.02	0.25	<div></div>	0.009	0.002	0.003	0.529
923.9175	11.9	10	1.0135	0	0	0	0	0.002	0.004	0.006	0.02	0.022	0.03	0.25	<div></div>	0.000	0.002	0.003	0.549
954.9125	11.7	10	1.0100	0	0	0	0	0.001	0.000	0.012	0.03	0.03	0.022	0.25	<div></div>	0.010	0.003	0.003	0.569
966.9175	11.3	10	1.0032	0	0	0	0.001	0.006	0.009	0.022	0.042	0.042	0.03	0.25	<div></div>	0.015	0.004	0.004	0.579



Nemko Italy S.p.A.
Via del Carroccio 4, 20853, Biassono, Italy

Appendix A: Test results

Report Number: 272549TRFMPE

Specification: --

Test data

Passenger front seat right

TXFREQUENCY	Max pur	Initial power	PROBE CAL FACTOR	Passenger partitions				E.U.T.	Average over the body (mW/cm ²)	Calc P.D. (mW/cm ²)	Max Calc. P.D. (mW/cm ²)	FOCLimit (mW/cm ²)
				Head	Chest	Lower Trunk	Head/neck/rear	Max TR Factor				
809.0125	11.7	10	1.0152	0.002	0.002	0.003	0.003	0.25	0.003	0.001	0.001	0.539
823.9875	11.9	10	1.0135	0.002	0.002	0.001	0.001	0.25	0.002	0.000	0.000	0.549
854.0125	11.7	10	1.0100	0.02	0.004	0.002	0.012	0.25	0.010	0.002	0.003	0.569
868.9875	11.3	10	1.0082	0.011	0.001	0.002	0.003	0.25	0.004	0.001	0.001	0.579

Passenger back seat right

TXFREQUENCY	Max pur	Initial power	PROBE CAL FACTOR	Passenger partitions				E.U.T.	Average over the body (mW/cm ²)	Calc P.D. (mW/cm ²)	Max Calc. P.D. (mW/cm ²)	FOCLimit (mW/cm ²)
				Head	Chest	Lower Trunk	Head/neck/rear	Max TR Factor				
809.0125	11.7	10	1.0152	0.003	0.002	0.002	0.004	0.25	0.003	0.001	0.001	0.539
823.9875	11.9	10	1.0135	0.001	0.001	0.001	0.003	0.25	0.002	0.000	0.000	0.549
854.0125	11.7	10	1.0100	0.004	0.002	0.001	0.001	0.25	0.002	0.001	0.001	0.569
868.9875	11.3	10	1.0082	0.04	0.001	0.001	0.005	0.25	0.012	0.003	0.003	0.579

Passenger back seat left

TXFREQUENCY	Max pur	Initial power	PROBE CAL FACTOR	Passenger partitions				E.U.T.	Average over the body (mW/cm ²)	Calc P.D. (mW/cm ²)	Max Calc. P.D. (mW/cm ²)	FOCLimit (mW/cm ²)
				Head	Chest	Lower Trunk	Head/neck/rear	Max TR Factor				
809.0125	11.7	10	1.0152	0.005	0.005	0.001	0.003	0.25	0.004	0.001	0.001	0.539
823.9875	11.9	10	1.0135	0.006	0.06	0.003	0.005	0.25	0.019	0.005	0.006	0.549
854.0125	11.7	10	1.0100	0.006	0.002	0.001	0.006	0.25	0.004	0.001	0.001	0.569
868.9875	11.3	10	1.0082	0.003	0.006	0.002	0.007	0.25	0.005	0.001	0.001	0.579

Passenger front seat left

TXFREQUENCY	Max pur	Initial power	PROBE CAL FACTOR	Passenger partitions				E.U.T.	Average over the body (mW/cm ²)	Calc P.D. (mW/cm ²)	Max Calc. P.D. (mW/cm ²)	FOCLimit (mW/cm ²)
				Head	Chest	Lower Trunk	Head/neck/rear	Max TR Factor				
809.0125	11.7	10	1.0152	0.005	0.005	0.001	0.003	0.25	0.004	0.001	0.001	0.539
823.9875	11.9	10	1.0135	0.006	0.06	0.003	0.005	0.25	0.019	0.005	0.006	0.549
854.0125	11.7	10	1.0100	0.006	0.002	0.001	0.006	0.25	0.004	0.001	0.001	0.569
868.9875	11.3	10	1.0082	0.003	0.006	0.002	0.007	0.25	0.005	0.001	0.001	0.579

Set up photo



80 cm + 13=93 cm (position 1)



80 cm + 37=117 cm (position 3)

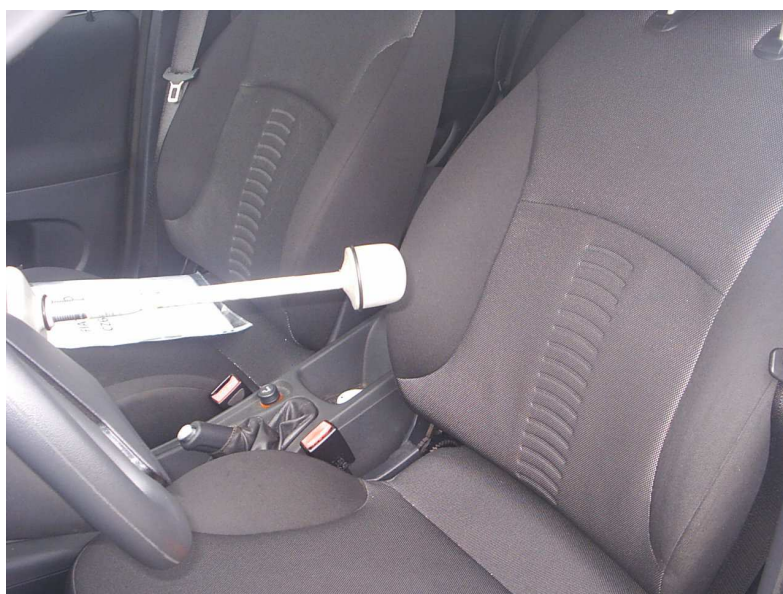
Set up photo



60 cm +27=87cm (position 2)



Set up photo

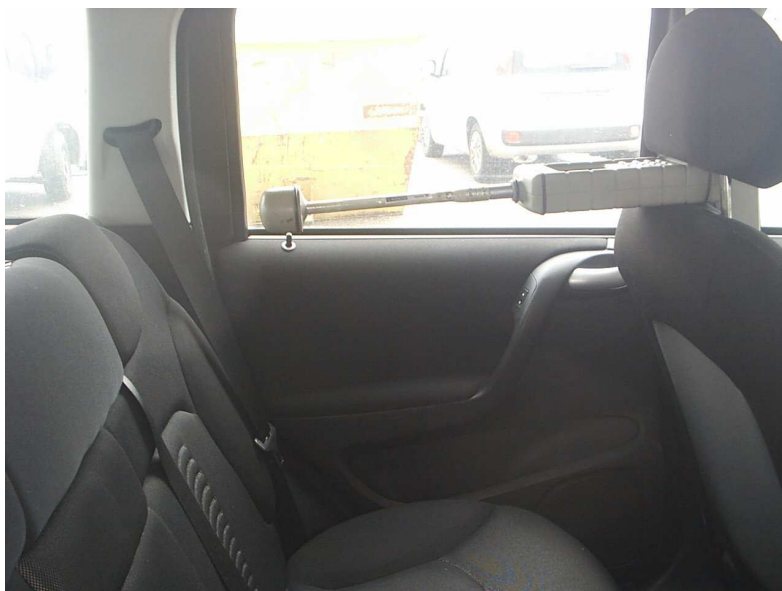


Front seat left



Front seat right

Set up photo



Back seat left



Back seat right

Set up photo



Radio Equipment



Nemko Italy S.p.A.
Via del Carroccio 4, 20853, Biassono, Italy

Appendix B: Photo set up

Report Number: 272549TRFMPE

Specification: --

Set up photo



Radio Equipment