

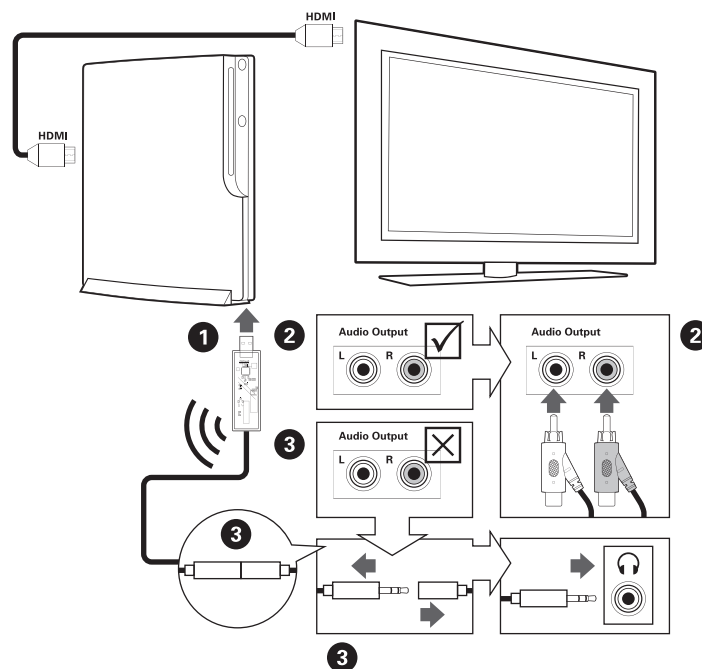
AFTERGLOW® WIRELESS HEADSET

SET UP: PLAYSTATION® 3

DIRECT TO TV CONNECTION WITH NO PS3 COMPOSITE CABLE*

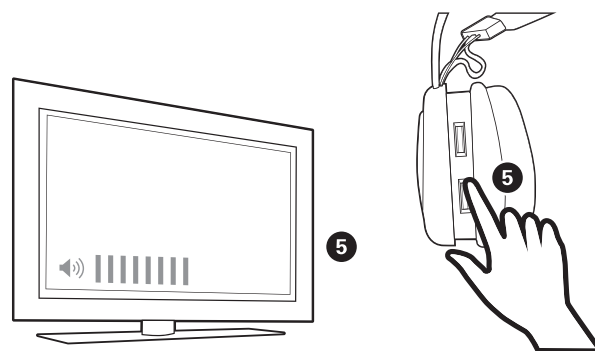
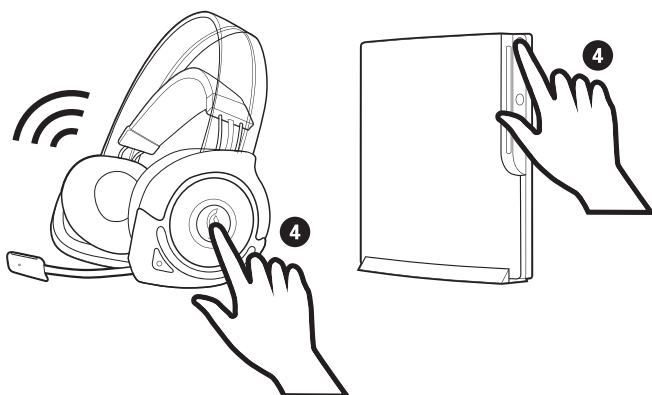
*Note: This setup may vary depending on the TV

1. Plug the Afterglow® USB transmitter into the front USB port of the PS3® console.
2. Plug the RCA cable (Red/White) that is attached to the Afterglow USB transmitter into the TV's Audio Out ports. Then skip to step 4.
3. If your TV does not have an RCA Audio Out, disconnect the RCA cable at its breakaway and expose the headphone jack. Plug the headphone jack of the USB transmitter into TV's headphone input.



4. Leave your HDMI connection intact. Turn the TV, console, and headset power ON.

5. Adjust the TV volume to a comfortable level first and then adjust the volume level on your headset.



AFTERGLOW®

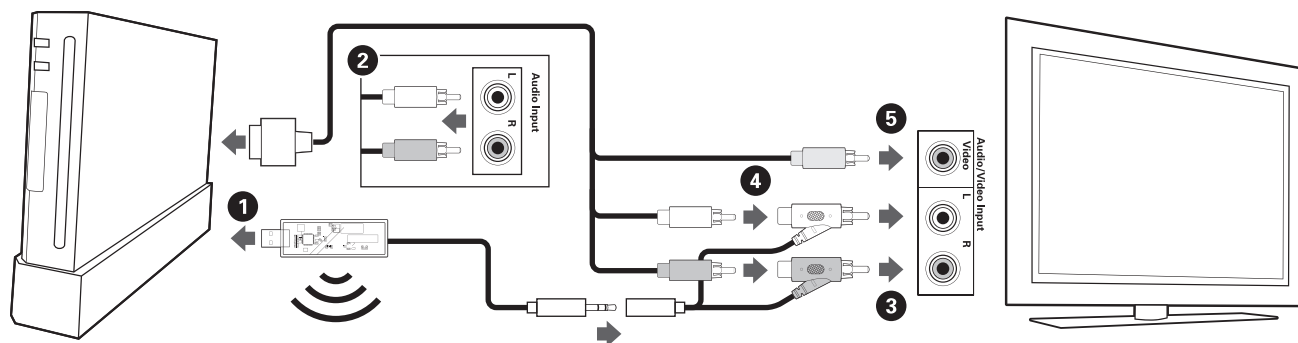
WIRELESS HEADSET

SET UP: NINTENDO Wii™

CONNECTED WITH COMPOSITE CABLE*

*Cable comes with the Nintendo Wii™ console.

1. Plug the Afterglow® USB transmitter into one of the front USB ports of the Wii™ console.
2. Unplug the RCA cable (Red/White only) that runs from your console to the TV.
3. Plug the RCA cable (Red/White) that is attached to the Afterglow USB transmitter into the TV.
4. Plug the RCA cable from the console into the pass-through of the Afterglow® RCA cable that is now plugged into the TV.
5. Leave the Wii™ component/composite video plugs connected to the TV.



6. Turn the TV, console, and headset power ON.

