

## EUT Internal Photos

Photo 4  
Internal View (Removed Cover)

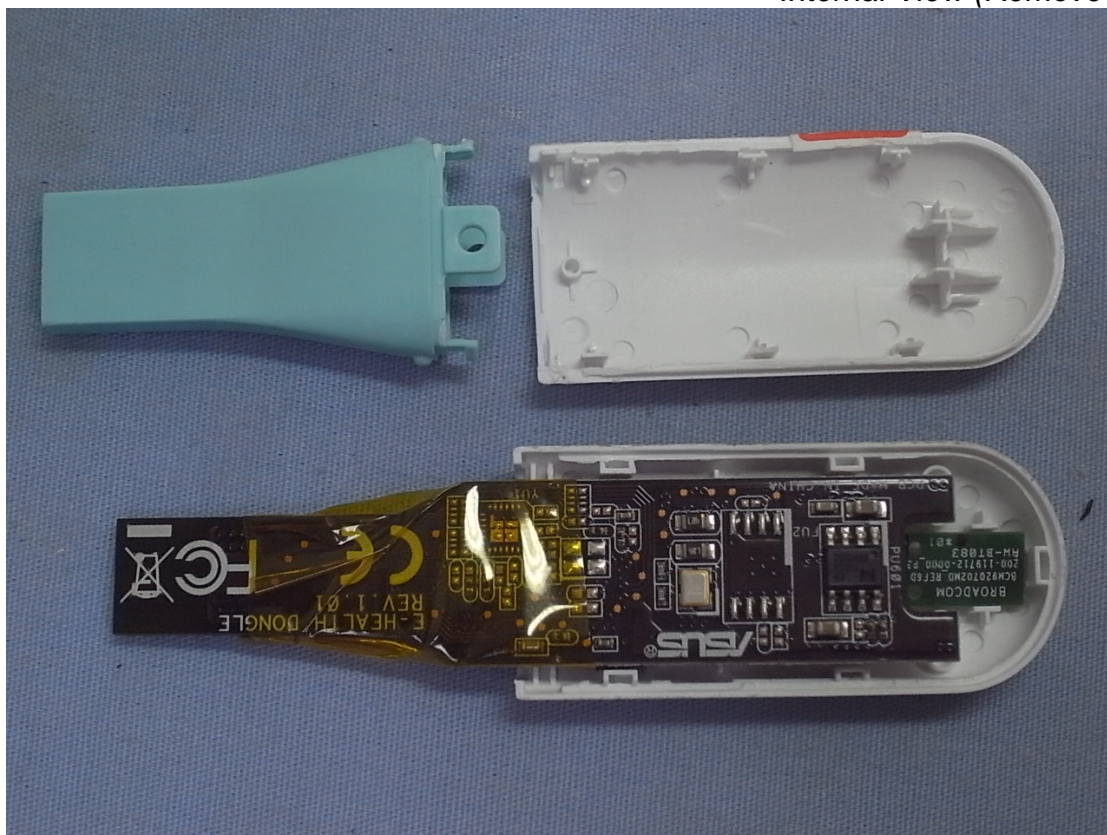


Photo 5  
Internal View (Removed Internal Boards)

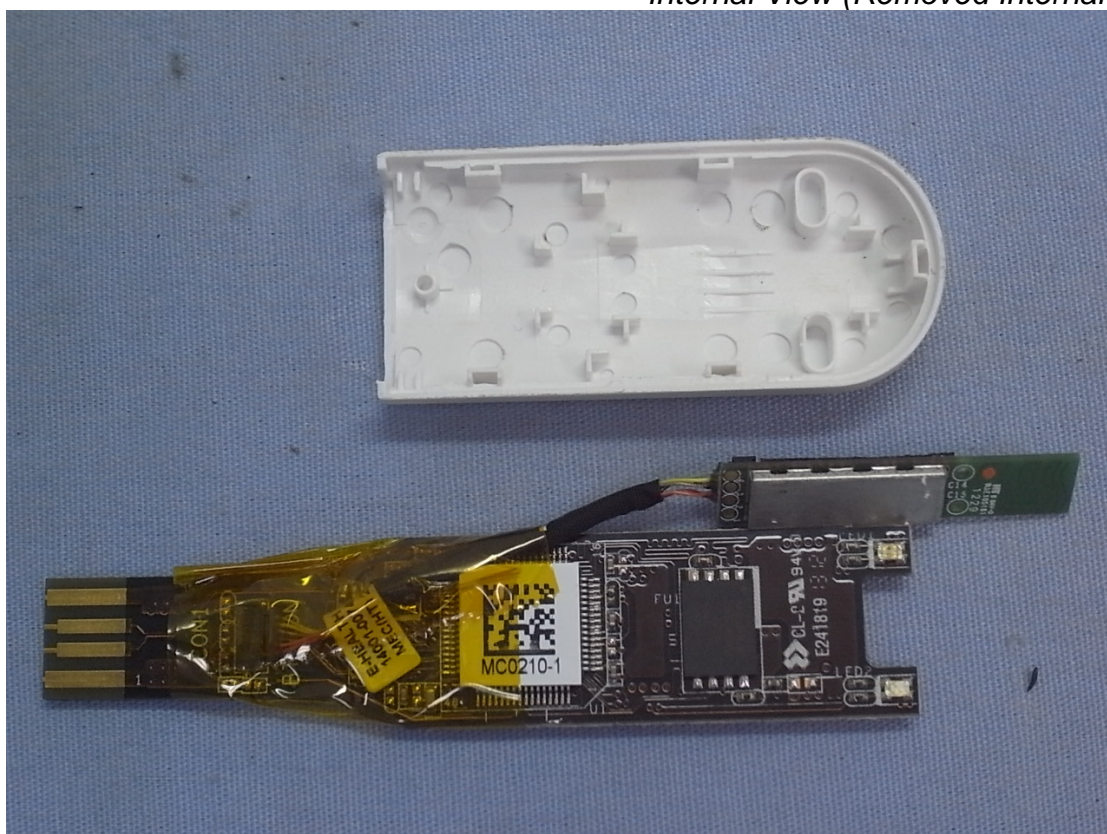




Photo 6  
Internal View (Main Board, Front View)

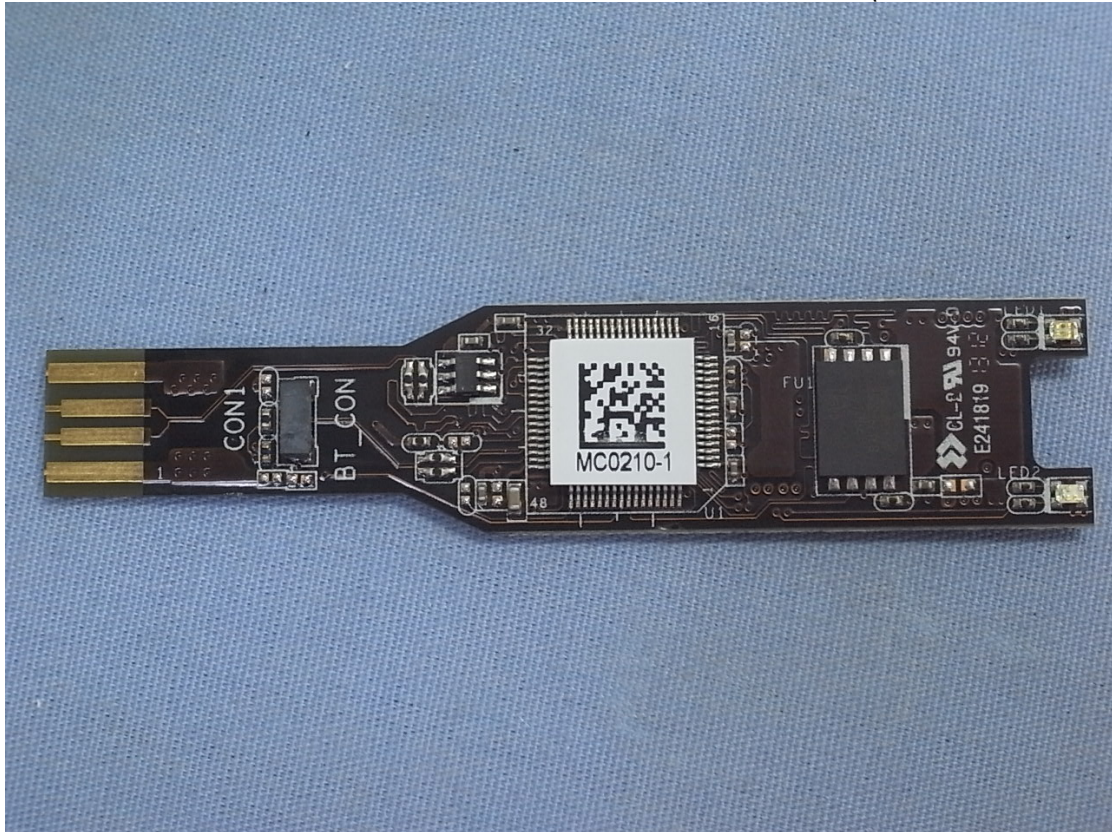
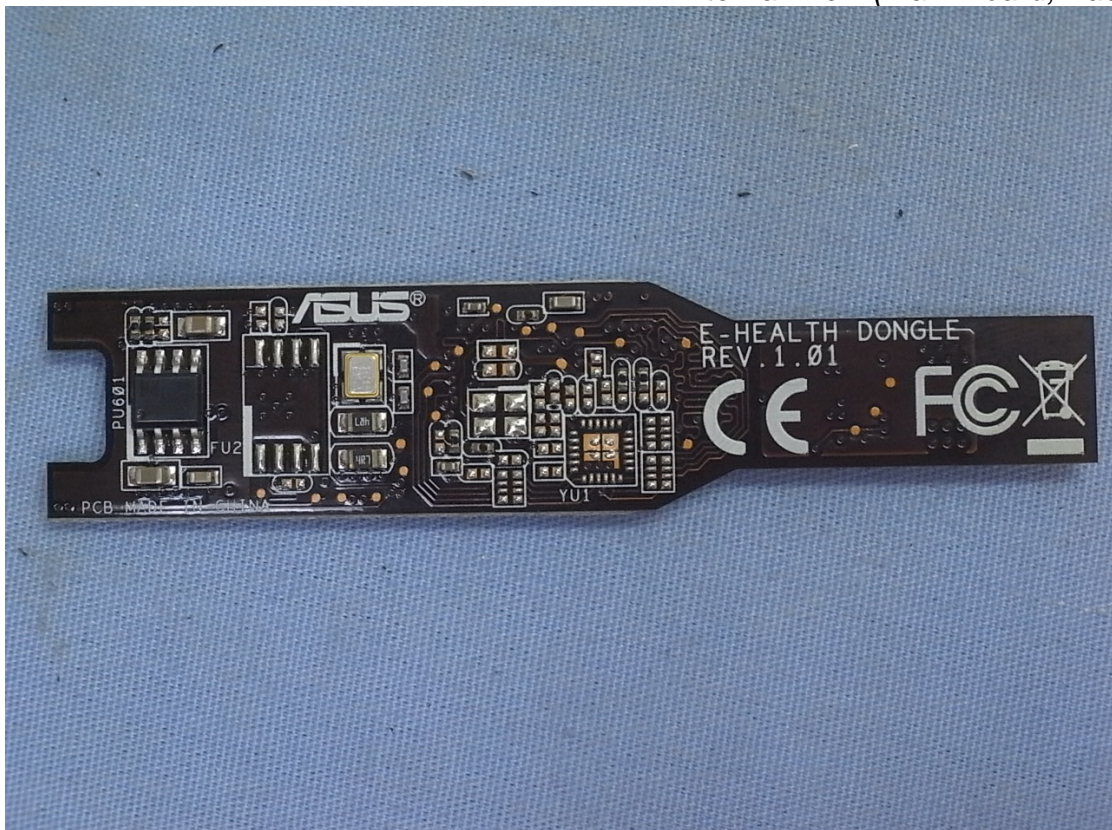
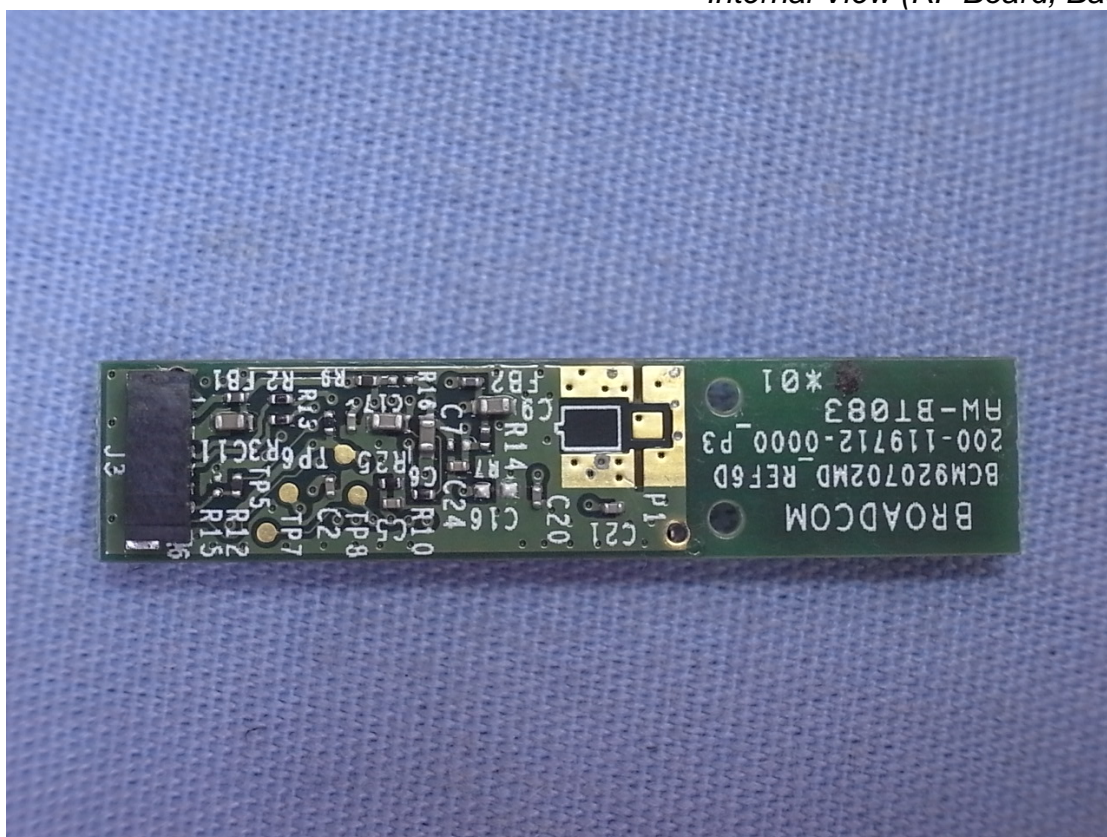


Photo 7  
Internal View (Main Board, Back View)





*Internal View (RF Board, Back View)*



Internal View (RF Board, Front View)

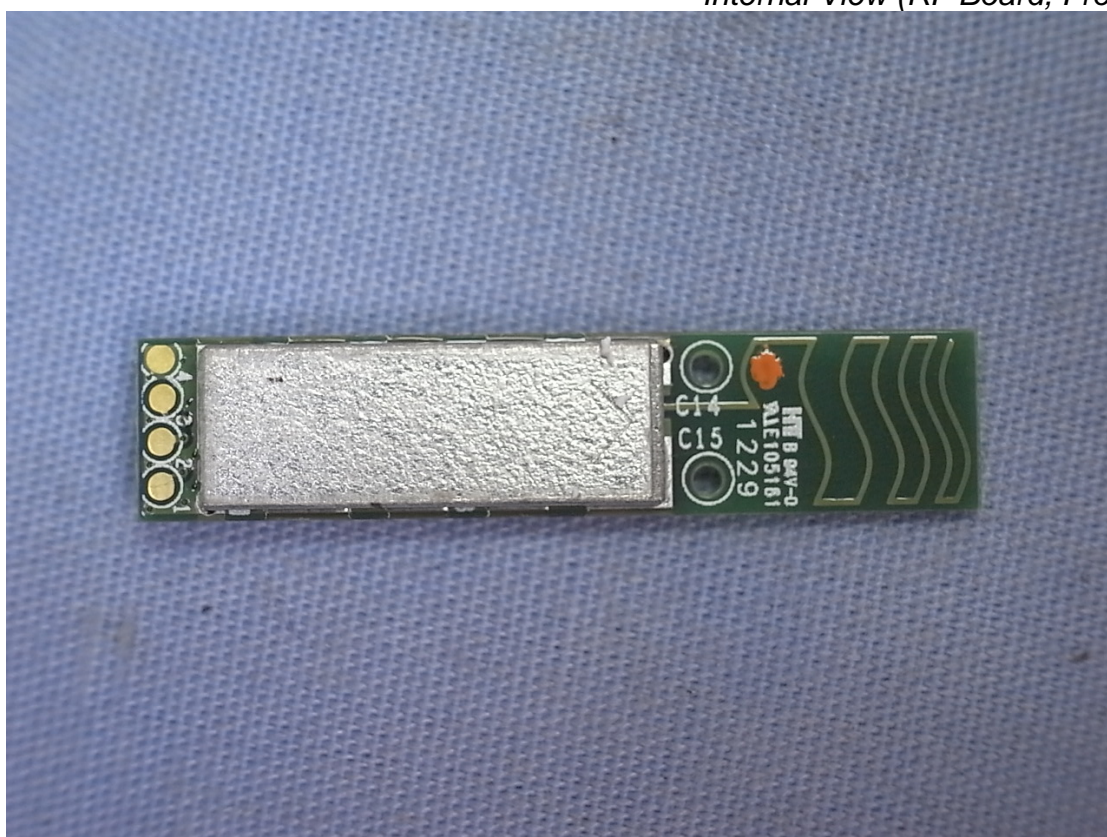


Photo 10

*Internal View (RF Board, Front View With Removed Shielded Cover)*

