

# Maximum Permissive Exposure

FCC ID: X58-CPW-103

Product Name: Care Pal Dongle

Model No: CPW-103

## SAR Test Exclusion Thresholds for 100 MHz – 6 GHz and $\leq 50$ mm

Approximate SAR Test Exclusion Power Thresholds at Selected Frequencies and Test Separation Distances are illustrated in the following Table.

| MHz  | 5   | 10  | 15  | 20  | 25  | mm                                      |
|------|-----|-----|-----|-----|-----|---|
| 150  | 39  | 77  | 116 | 155 | 194 | SAR Test<br>Exclusion<br>Threshold (mW) |
| 300  | 27  | 55  | 82  | 110 | 137 |   |
| 450  | 22  | 45  | 67  | 89  | 112 |   |
| 835  | 16  | 33  | 49  | 66  | 82  |   |
| 900  | 16  | 32  | 47  | 63  | 79  |   |
| 1500 | 12  | 24  | 37  | 49  | 61  |   |
| 1900 | 11  | 22  | 33  | 44  | 54  |   |
| 2450 | 10  | 19  | 29  | 38  | 48  |   |
| 3600 | 8   | 16  | 24  | 32  | 40  |   |
| 5200 | 7   | 13  | 20  | 26  | 33  |   |
| 5400 | 6   | 13  | 19  | 26  | 32  |   |
| 5800 | 6   | 12  | 19  | 25  | 31  |   |
| MHz  | 30  | 35  | 40  | 45  | 50  | mm                                      |
| 150  | 232 | 271 | 310 | 349 | 387 | SAR Test<br>Exclusion<br>Threshold (mW) |
| 300  | 164 | 192 | 219 | 246 | 274 |   |
| 450  | 134 | 157 | 179 | 201 | 224 |   |
| 835  | 98  | 115 | 131 | 148 | 164 |   |
| 900  | 95  | 111 | 126 | 142 | 158 |   |
| 1500 | 73  | 86  | 98  | 110 | 122 |   |
| 1900 | 65  | 76  | 87  | 98  | 109 |   |
| 2450 | 57  | 67  | 77  | 86  | 96  |   |
| 3600 | 47  | 55  | 63  | 71  | 79  |   |
| 5200 | 39  | 46  | 53  | 59  | 66  |   |
| 5400 | 39  | 45  | 52  | 58  | 65  |   |
| 5800 | 37  | 44  | 50  | 56  | 62  |   |

The 1-g and 10-g SAR test exclusion thresholds for 100 MHz to 6 GHz at *test separation distances*  $\leq 50$  mm are determined by:

$[(\text{max. power of channel, including tune-up tolerance, mW})/(\text{min. test separation distance, mm})] \cdot$

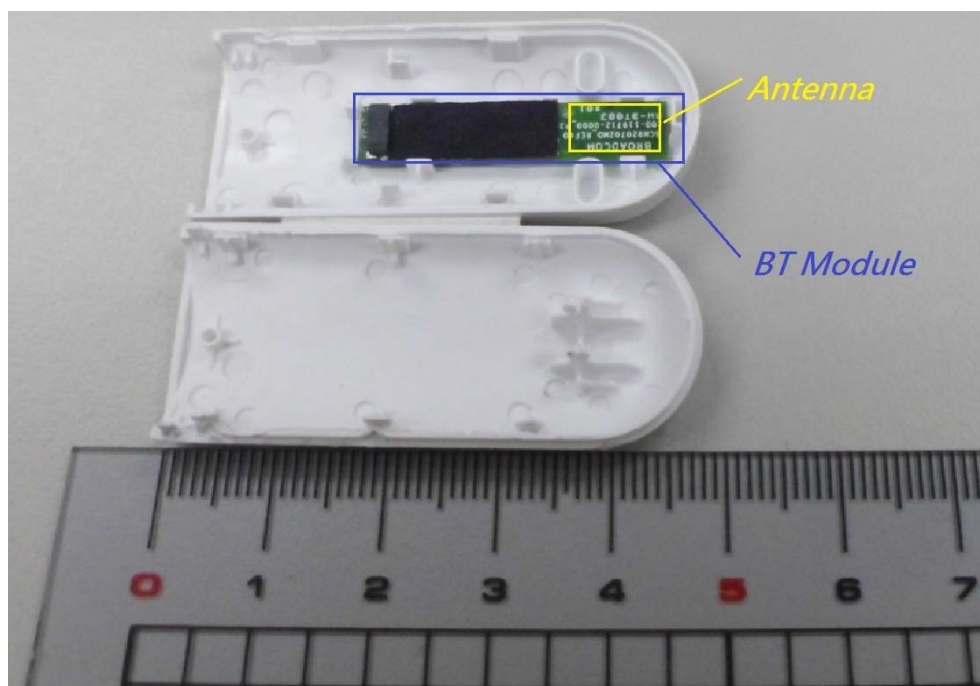
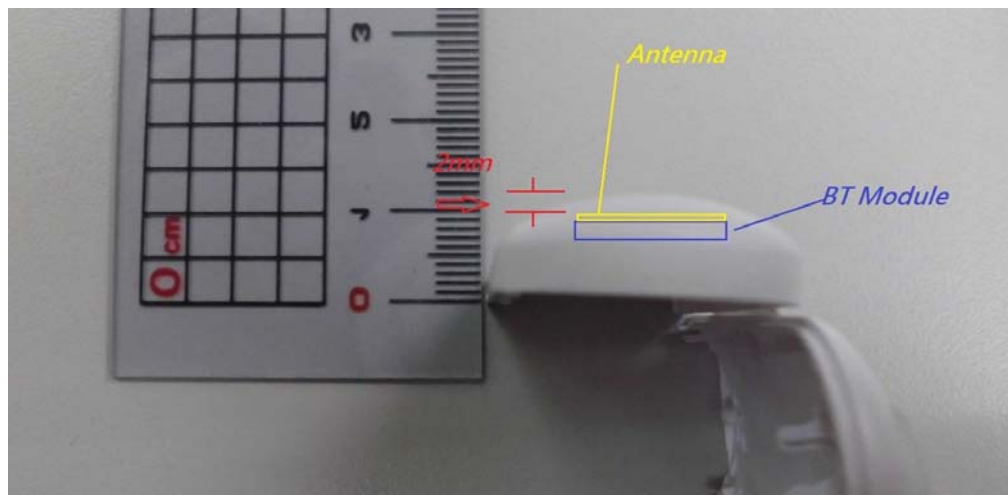
$[\sqrt{f_{\text{GHz}}}] \leq 3.0$  for 1-g SAR and  $\leq 7.5$  for 10-g extremity SAR, where

$f_{\text{GHz}}$  is the RF channel transmit frequency in GHz

Power and distance are rounded to the nearest mW and mm before calculation

The result is rounded to one decimal place for comparison

The test exclusions are applicable only when the minimum *test separation distance* is  $\leq 50$  mm and for transmission frequencies between 100 MHz and 6 GHz. When the minimum *test separation distance* is  $< 5$  mm, a distance of 5 mm is applied to determine SAR test exclusion.



### [Maximum measured transmitter power]

#### 8.6.1.Type of Modulation: 8-DPSK

| No. | Channel | Test Frequency | Peak Output Power | Limit |
|-----|---------|----------------|-------------------|-------|
| 1.  | 0       | 2402MHz        | -1.916 dBm        | 21dBm |
| 2.  | 39      | 2441MHz        | -1.968 dBm        | 21dBm |
| 3.  | 78      | 2480MHz        | -2.165 dBm        | 21dBm |

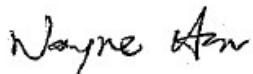
#### 8.6.2.Type of Modulation: GFSK

| No. | Channel | Test Frequency | Peak Output Power | Limit |
|-----|---------|----------------|-------------------|-------|
| 1.  | 0       | 2402MHz        | -3.874 dBm        | 21dBm |
| 2.  | 39      | 2441MHz        | -3.884 dBm        | 21dBm |
| 3.  | 78      | 2480MHz        | -4.534 dBm        | 21dBm |

The max output power E.I.R.P= $-1.916\text{dBm}=0.00064\text{mW}$

Per KDB 447498 clarifies "When the minimum test separation distance is  $< 5\text{ mm}$ , a distance of  $5\text{ mm}$  is applied to determine SAR test exclusion.", this device has output power  $0.00064\text{mW} <$  threshold  $10\text{ mW}$  thus this device is exempt from SAR test.

Sincerely Yours,



---

Wayne Hsu  
Assistant Manager  
digiO2 International Co., Ltd.