

1

Thank you for purchasing the new **Nyx1200-AC** dual band router from Nexxt Solutions™. If any of the following items are mismatched, missing or damaged, please contact the store from whom you purchased the unit for immediate replacement.

- Dual band AC wireless router
- Power adapter 110/220V
- Network cable
- Quick installation guide

2

1. Preliminary steps

This advanced network device works as wireless router, universal repeater and WISP. Before setting up the router, you must verify that you have high-speed internet access available. The most widely used connection nowadays is broadband DSL or Cable. The description used in this guide is based on that type of connection.

3

2. Product layout

Front panel

LED indicators on the front panel provide information about network activity, the connection and link status of the ports in real time. They also facilitate activity monitoring and troubleshooting the performance of the device.



4

LED indicator	Status	Description
1. Power	Solid	The system is working properly
	Off	No power is being supplied to the router
2. WPS	Solid	A client device is connected to the router via WPS
	Blinking	WPS authentication is active
	Off	WPS is not enabled
3. 2.4G	Solid	The 2.4GHz wireless connection is enabled
	Blinking	The device is actively sending or transmitting data wirelessly over the 2.4GHz band
	Off	The 2.4 GHz connection is disabled

5

LED indicator	Status	Description
4. 5G	Solid	The 5GHz wireless connection is enabled
	Blinking	The device is actively sending or transmitting data wirelessly over the 5GHz band
	Off	The 5GHz connection is disabled
5. WAN	Solid	An Ethernet cable is connected in this port
	Blinking	The device is actively sending or transmitting packets over that port
	Off	No Ethernet cable is connected to that port

6

LED indicator	Status	Description
6. LAN 1 / LAN2	Solid	An Ethernet cable is connected in this port
	Blinking	The device is actively sending or transmitting data over that port
	Off	No link is detected on that port

7

Back panel

The rear panel provides the physical connectors for power and the client network devices.



8

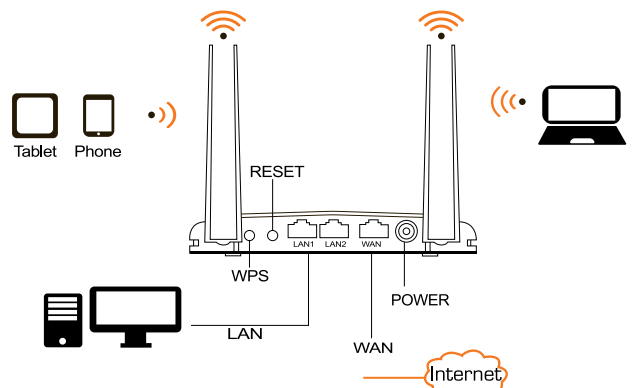
- 1. Antennas:** Two 5dBi omnidirectional antennas.
- 2. WPS:** Press this button to connect to the 2.4GHz band and use the WPS feature. (When enabled, mobile devices will connect to the network directly without a password).
- 3. Reset:** Press and hold this button for at least 5 seconds to restore the router to its factory default settings. The router must be powered on in order for this function to work.
- 4. LAN ports (2/1):** Connect your local laptop or desktop computers in your network to any of these RJ45 ethernet ports.
- 5. WAN:** This RJ45 port is where you will connect the DSL/cable modem or Ethernet line from your ISP.
- 6. DC-IN:** Connect the supplied power adapter to this jack.

9

3. Hardware installation

- First determine the optimum location for the router. The best place is usually at the center of your wireless network with the antennas in the upright position.
- Then, connect the modem to the WAN port of the router using the supplied ethernet cable.
- Connect your PC to the router if using a wired connection.
- Insert one end of the supplied power adapter to the AC input jack located on the rear panel of the router, before plugging the other end to a standard electrical wall outlet.

10



*Images herein are for references only. The actual product may differ.

11

4. Web UI router configuration

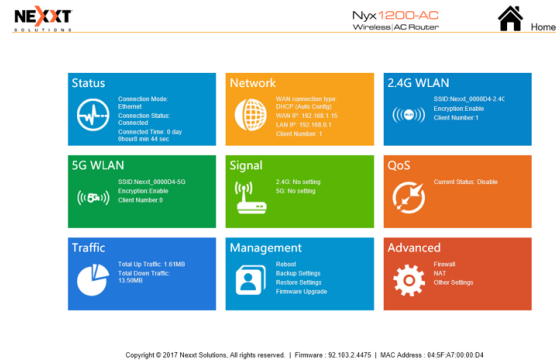
- Open a web browser to access the main web interface. Type the default IP address of the router: **192.168.0.1** into the address bar and then press **Enter** on the keyboard.
- A popup should come up asking for the username and password in order to log into the device. The default username/password is **admin** in both instances. Click **OK** or press **Enter** to continue.

12



13

3. Once logged in, the main web user interface will be displayed.



Copyright © 2017 Nexxt Solutions. All rights reserved. | Firmware: 32.103.2.4475 | MAC Address: 04:5F:A7:00:00:04

14

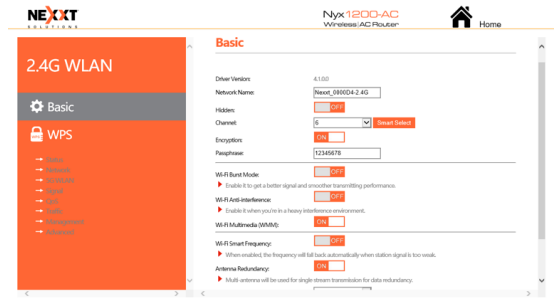
4. To setup the SSID and password for the wireless router, you will have to click on the **2.4G WLAN** or **5G WLAN** settings tile. For the purposes of this guide, we will setup the 2.4G WLAN. Please note, it is the exact same steps to setup the 5G WLAN network.



Copyright © 2017 Nexxt Solutions. All rights reserved. | Firmware: 32.103.2.4475 | MAC Address: 04:5F:A7:00:00:04

15

5 This is the menu for the **2.4G WLAN**. Here you can change the **Network Name** and **Password** for your wireless router. Click **Save/Apply**, if any of the parameters have been modified or updated.



Copyright © 2017 Nexxt Solutions. All rights reserved. | Firmware: 32.103.2.4475 | MAC Address: 04:5F:A7:00:00:04

16

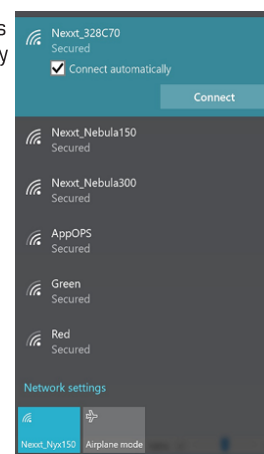
5 Connecting to Wi-Fi using Windows 10

1. To connect to the router wirelessly, click on the wireless icon on your taskbar.



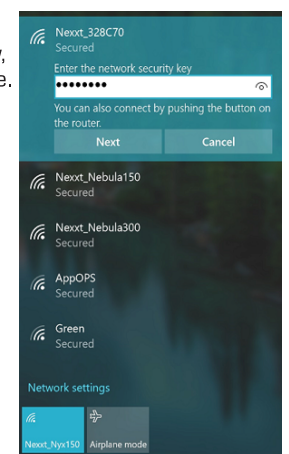
17

2. Proceed to select the Wireless network followed by **Connect**. By default, the wireless SSID is Nexxt_XXXXXX (whereby "x" represents the last digits of the MAC address).



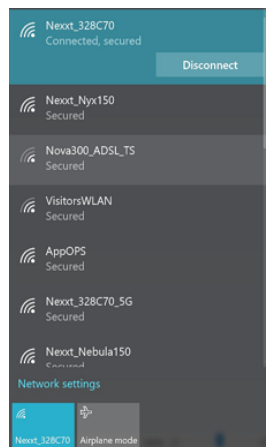
18

3. Enter the user-defined or preassigned password, if any, and click on **Next** to continue.



19

4. If the link is successfully established, the **Connected** message will come up on the screen.



20

FCC Statement
1. This device complies with Part 15 of the FCC Rules. Operation is subject to the following conditions:
(1) This device may not cause harmful interference, and
(2) This device must accept any interference received, including interference that may cause undesired operation.
2. Changes or modifications not expressly approved by the party responsible for compliance could void the users' authority to operate the equipment.
3. To comply with FCC RF exposure compliance requirements, a separation distance of at least 20 cm must be maintained between the antenna of this device and all persons.
4. This Transmitter must not be co-located or operating in conjunction with any other antenna or transmitter

21

FCC Caution
Note: This equipment has been tested and found to comply with the limits for a Class B digital device, pursuant to part 15 of the FCC Rules. These limits are designed to provide reasonable protection against harmful interference in a residential installation. This equipment generates, uses and can radiate radio frequency energy and, if not installed and used in accordance with the instructions, may cause harmful interference to radio communications. However, there is no guarantee that interference will not occur in a particular installation. If this equipment does cause harmful interference to radio or television reception, which can be determined by turning the equipment off and on, the user is encouraged to try to correct the interference by one or more of the following measures:
• Reorient or relocate the receiving antenna.
• Increase the separation between the equipment and receiver.
• Connect the equipment into an outlet on a circuit different from that to which the receiver is connected.
• Consult the dealer or an experienced radio/TV technician for help.

22

Caution!

Any changes or modifications not expressly approved by the party responsible for compliance could void the user's authority to operate the equipment.

Caution!

1. To comply with FCC RF exposure compliance requirements, a separation distance of at least 20 cm must be maintained between the antenna of this device and all persons.
2. This Transmitter must not be co-located or operating in conjunction with any other antenna or transmitter.

FCC ID: X4YNX12AC