

# NHE-W100带USB控制

125.00 mm

## Smart Wall Socket User Guide

NHE-W100

### Notes Before Installation

1. Wi-Fi Only support a 2.4GHz network (802.11 b/g/n)
2. Neutral wire Required.
3. Basic electrical wiring knowledge or experience required , or please consult a professional electrician
4. Do not access more than the maximum power of the device design
5. ON/OFF Button also can be used as reset button, you want to reset your smart socket to factory defaults. Only do this if you are sure you long press to erase all your settings

### Specifications

|                    |   |
|--------------------|---|
| Type               | Smart Wall Socket                                   |
| Model              | NHE-W100  |
| Power supply mode  | Neutral/Live Wire                                   |
| Rated Current      | 15A(Max)  |
| Rated Voltage      | AC110-125V-50/60Hz                                  |
| Load Power         | Single 1500W<br>Total 2500W<br>Inductive Load<2000W |
| USB Output         | 5V/2.1A   |
| Wireless Frequency | 2.4GHz  |
| Wireless Standard  | IEEE802.11 b/g/n                                    |

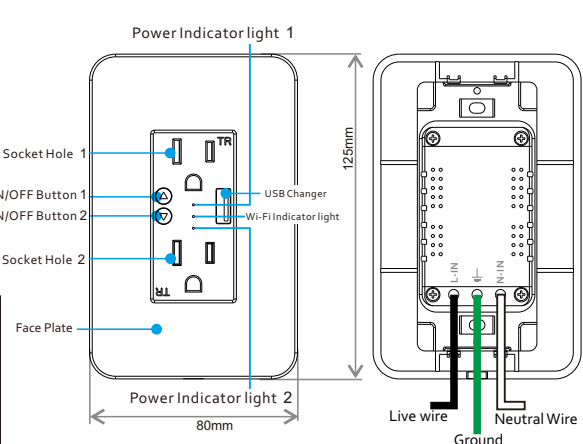
### Indicator light meaning

| Indicator | Status         | Description                              |
|-----------|----------------|--|
| Green     | Steadily blink | Ready for connection (Default Mode Only) |
| Green     | Slowly blink   | Ready for connection (AP Mode Only)      |
| Red/white | On             | Turn the light off                       |
| Red/white | On             | Turn the light on                        |
| Green     | Flash Slowly   | No Internet                              |



### Safety Notice:

- Cut off the power before installation
- Please use it only when it's installed with RCD or current leakage protector at home

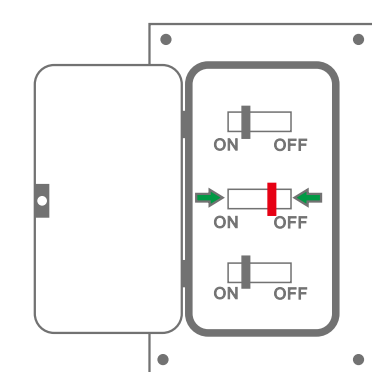


## Smart Home

### Installation Guide

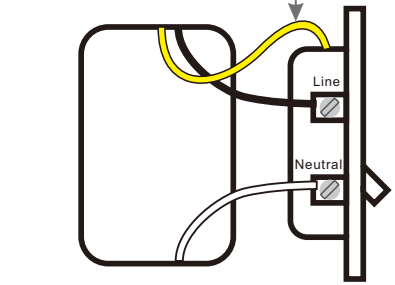
#### STEP.1

Turn off circuit breaker  
Find your socket's control in your circuit breaker and turn it off, ensure the socket power off completely.



#### STEP.2

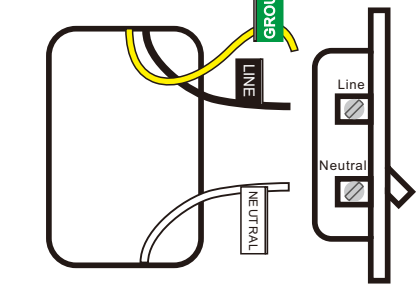
Remove the original socket  
In the wall cassette, find the neutral wire line wire and ground wire.



⚠ If your original socket is also two jacks, you may find 4 or 5 wires. Please find the neutral wires Line wires and ground wires. This smart socket only needs to use the neutral wires Line wires and ground wires, other lines do not need to be connected

#### STEP.3

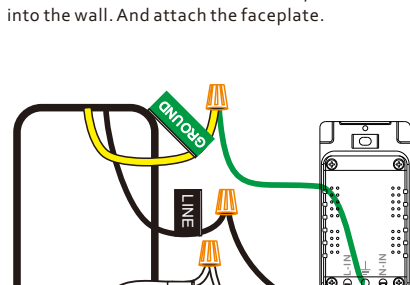
Label your wires  
Mark or record the corresponding line before removing the old socket



Usually:  
White represents the neutral line  
Black represents the fire line  
Green or yellow or a single bare copper wire representing the ground wire  
The above is for reference only and cannot be used as a standard.

#### STEP.4

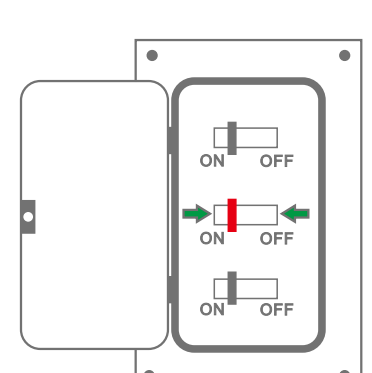
Install socket  
Use wire-nuts to connect the socket wires to your home wires, following the diagram. Be careful to match line. Then remove the stickers, screw the socket into the wall. And attach the faceplate.



⚠ For safety, please connect the ground wire

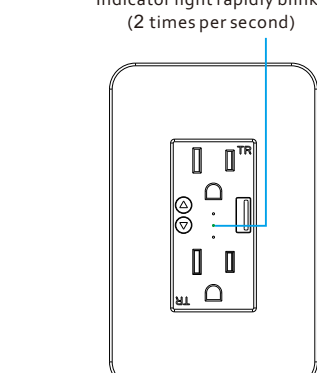
#### STEP.5

Turn on circuit breaker  
Turn on your socket's power from the circuit breaker. Press the socket a few times to make sure it works.



#### STEP.6

Check the Wi-Fi light  
Tap NEXT when the Wi-Fi indicator light blinks



### Install the "Smart Life" APP

Step A: Find out "Smart Life" app in Apple app store, Google Play, or scan the QR code below and install it.



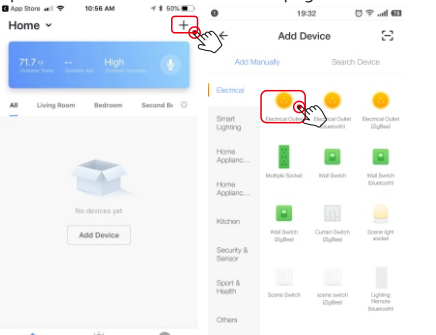
The free app "Smart Life" is compatible with mobile devices the support IOS8.0 above, Android 4.4 above

Step B: Enter the register interface, input the email address/phone number for getting the verification code to register an account. Please just login if you already have a Smart Life account.

Step C: Add the switch to Smart Life APP

Note: This smart socket can only support 2.4G network and cannot work with 5.0G network. please check if your home network is 2.4G and make sure that your phone has been connected to your Wi-Fi home network.

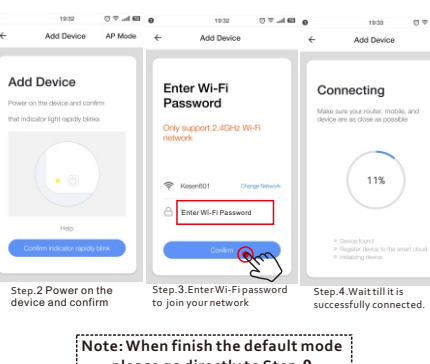
(a) Tap "+" button on top right corner to add device, the tap "Electrical Outlet" to enter next page.



### Default Mode (Recommend)

Indicator light rapidly blinks (2 times per second)

Step 1: Make sure the indicator blinks rapidly, if not, hold the anyone ON/OFF button for 7 seconds for reset.



### AP Mode (Alternative)

Indicator light slowly blinks (1 time every 3 seconds)

Step 1: Make sure the indicator blinks rapidly, press and hold the anyone ON/OFF button for another 7 seconds. The indicator will blink slowly.

