

Step 1

Thank you for purchasing the new AULUB305U3 wireless-N high power USB adapter from Nexxt Solutions™. If any of the following items are mismatched, missing or damaged, please contact the merchant from whom you purchased the unit for immediate replacement.

Package contents

- AULUB305U3 wireless-N high power USB adapter
- 5dBi omnidirectional antenna
- Quick installation guide
- Micro USB to standard USB cable
- CD ROM (with a digital copy of the quick installation guide and driver configuration tool)

Step 2

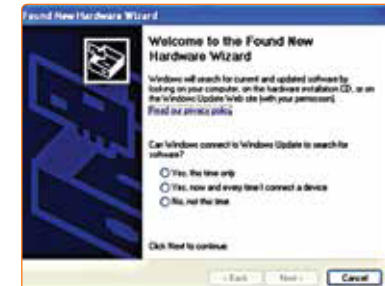
Installing the USB network adapter

1. Insert the Wireless USB Adapter into the USB port of your computer.



Step 2

2. If the Found New Hardware Wizard system dialogue appears, select **Cancel** and use the included Setup Wizard software CD for fast installation.



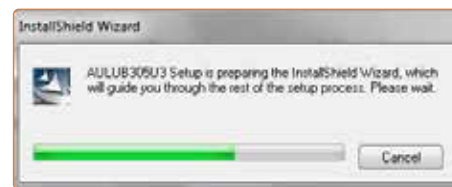
Step 3

Software installation

1. Insert the supplied software CD into the CD drive of your computer.
2. When the dialogue box is displayed, click on the **RUN** button to continue.
(If the autorun fails, double click **Nexxt.exe** in the software CD to manually install the software).

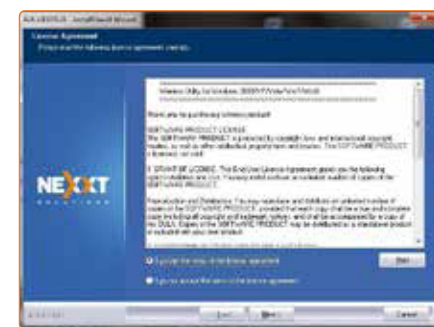
Step 3

3. This will start the InstallShield Wizard which will guide you through the installation process.



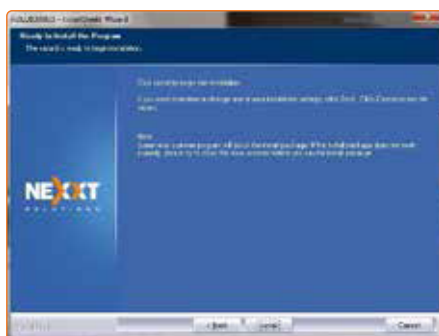
Step 3

4. Select **I accept the terms of the license agreement** and click **Next** to move to the following step.



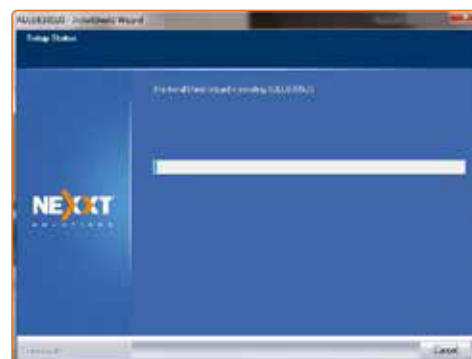
Step 3

5. Click **Install** to begin the driver installation.



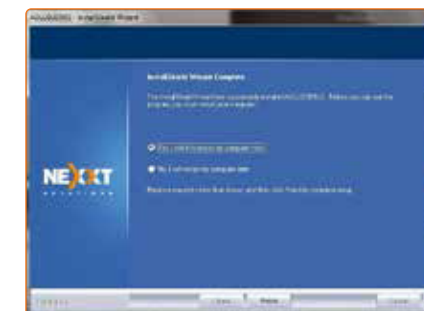
Step 3

6. The status bar is displayed in this step.



Step 3

7. If the driver has been successfully installed, the user may be prompted to reboot the system either immediately or at a later time. This will depend on your operating system.



8. Click **Finish** to complete the installation.

Step 4

Wireless Network Connection in Windows 7

1. Click the wireless connection icon in the lower right corner of the computer desktop to view the available networks.
2. Select the wireless network you wish to connect to.



Step 4

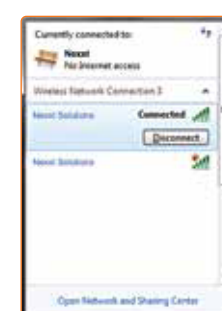
3. If the wireless network you are connecting to is encrypted, you will be prompted to enter the key. Click **Ok** once you enter the correct security key.



4. The window will display the **Connected** message once the wireless connection has been established successfully.

Step 4

5. From then on, you will be able to start enjoying wireless access to the Internet.



6. You can disconnect the network, view its status, or modify the wireless network properties simply by right-clicking on the wireless network icon.



FCC statement

Federal Communication Commission Interference Statement

This equipment has been tested and found to comply with the limits for a Class B digital device, pursuant to Part 15 of the FCC Rules. These limits are designed to provide reasonable protection against harmful interference in a residential installation. This equipment generates, uses and can radiate radio frequency energy and, if not installed and used in accordance with the instructions, may cause harmful interference to radio communications. However, there is no guarantee that interference will not occur in a particular installation. If this equipment does cause harmful interference to radio or television reception, which can be determined by turning the equipment on and off, the user is encouraged to try to correct the interference by one of the following measures:

- Reorient or relocate the receiving antenna.
- Increase the separation between the equipment and receiver.
- Connect the equipment into an outlet on a circuit different from that to which the receiver is connected.
- Consult the dealer or an experienced radio/TV technician for help.

FCC Caution: Any changes or modifications not expressly approved by the party responsible for compliance could void the user's authority to operate this equipment.

This device complies with Part 15 of the FCC Rules. Operation is subject to the following two conditions: (1) This device may not cause harmful interference, and (2) this device must accept any interference received, including interference that may cause undesired operation.

This equipment must be installed and operated in accordance with provided instructions and the antenna(s) used for this transmitter must be installed to provide a separation distance of at least 5mm from all persons and must not be co-located or operating in conjunction with any other antenna or transmitter.

This transmitter must not be co-located or operating in conjunction with any other antenna or transmitter.
The manufacturer is not responsible for any radio or TV interference caused by unauthorized modifications to this equipment.
Radiation Exposure Statement

NOTE:(1)The manufacturer is not responsible for any radio or TV interference caused by unauthorized modifications to this equipment.(2) To avoid unnecessary radiation interference, it is recommended to use a shielded RJ45 cable