

Tracciare

RF460 and Power Supply Installation Guide for S4e Meter

January 27, 2010 Version 0.01A

TABLE OF CONTENTS

1. Preparing the S4e Meter for Installation	4
2. The AMI Mounting Board	4
3. Assemble the AMI Mounting Board	5
4. Inserting the AMI Mounting Board	6
5. Attaching the Antenna	7
6. Closing the S4e Meter	7

LIST OF FIGURES

Figure 1—Removal of Plastic Cover
Figure 2—Lift Label Cover
Figure 3—Removal of Electronic Housing
Figure 4—AMI Mounting Board Fully Assembled
Figure 5—Empty AMI Mounting Board
Figure 6—Remove White Screws
Figure 7—Power Supply Area
Figure 8—Secure Power Supply
Figure 9—RF460 Area
Figure 10—Secure RF460
Figure 11—Separate the Electronic Housing and Meter Base
Figure 12—Locate Power Leads Yellow/Gray
Figure 13—Connect the Power Supply Leads
Figure 14—Re-Connect the Yellow/Gray Leads
Figure 15—Insert AMI Mounting Board
Figure 16—Attach White Ribbon Cable
Figure 17—Connect Antenna to the RF460 Board
Figure 18—Position of the Antenna
Figure 19—Securing the Antenna
Figure 20—Place FCC Label
Figure 21—Replace Plastic Cover
Figure 22—Replace T-Seal

DEVICE WARNING

This device must be installed to provide a separation distance of at least 50 cm from all persons and must not be co-located or operating in conjunction with any other antenna or transmitter in its final installation.

Preparing the S4e Meter for Installation

1. Remove the Plastic Cover by rotating the cover counter-clockwise then pulling the cover away (see Figure 1).
2. Lift the label cover to expose the four mounting screws holding the Electronics Housing in place (see Figure 2).
3. Pull the Electronic Housing away from the Meter Base so that the AMI Mounting Board can be installed (see Figure 3).



Figure 1
Removal of
Plastic Cover



Figure 2
Lift Label Cover



Figure 3
Removal of
Electronics Housing

The AMI Mounting Board

The AMI Mounting Board should come pre-assembled when you receive it. If it is not, follow the instructions on Page 5 for "Assemble the AMI Mounting Board".

If your AMI Mounting Board is assembled and looks like Figure 4 below, continue on Page 6



Figure 4
AMI Mounting Board
Fully Assembled

Assemble the AMI Mounting Board

1. Place the AMI Mounting with the White AMI Ribbon Cable pointing up (see Figure 5)
2. Remove the White Plastic Screws from the white Stand-Offs already positioned on the Mounting Board (see Figure 6)

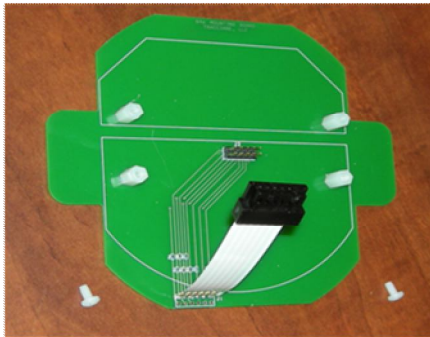


Figure 5
AMI Mounting Board

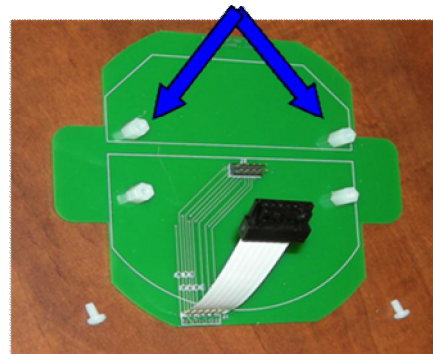


Figure 6
Remove White Screws

3. Place the Power Supply in the area identified by the small trace area (see Figure 7)
4. Secure the Power Supply with the white screws (see Figure 8)

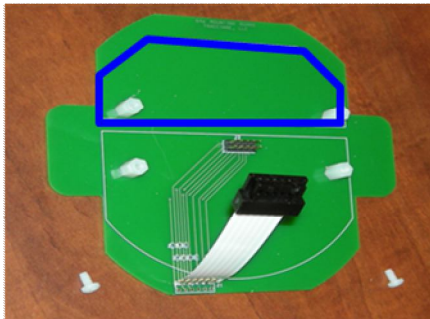


Figure 7
Power Supply Area

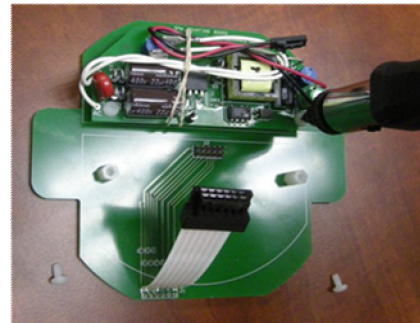


Figure 8
Secure Power Supply

5. Place the LGR460 in the area identified by the large trace area (see Figure 9)
6. Secure the LGR460 with the white screws (see Figure 10)

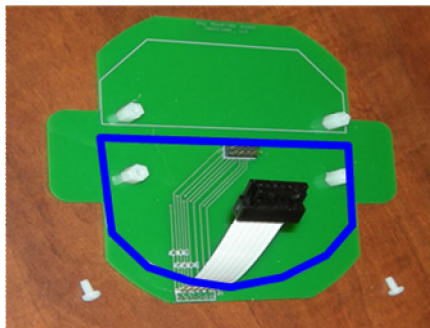


Figure 9
LGR460 Area



Figure 10
Secure RF460

Inserting the AMI Mounting Board

1. Separate the Electronic Housing from the Meter Base (see Figure 11)
2. Locate and disconnect the Power Leads Connected to the Electronic Housing —Yellow and Gray (see Figure 12)



Figure 11
Separate the Electronic
Housing and Meter Base



Figure 12
Locate Power Leads
Yellow/Gray

3. Connect the Power Supply to the terminals on the Electronic Housing (see Figure 13)
4. Re-Connect the Yellow and Gray Power Leads (see Figure 14)



Figure 13
Connect the Power
Supply Leads



Figure 14
Re-Connect
Yellow/Gray Leads

5. Place the AMI Mounting Board into the Meter with the RF460 facing down (see Figure 15)
6. Attach the AMI Mounting Board's White Ribbon cable to the Electronic Housing (see Figure 16)



Figure 15
Insert AMI Mounting



Figure 16
Attach White Ribbon

7. Replace the Electronic Housing Screws and replace the Label Cover

Attaching the Antenna

1. Connect the antenna to the RF460 (see Figure 17)
2. Secure the antenna about 1.5" from the front edge of the Electronic Housing. It should be in contact with the Electronic Housing (see Figure 18)

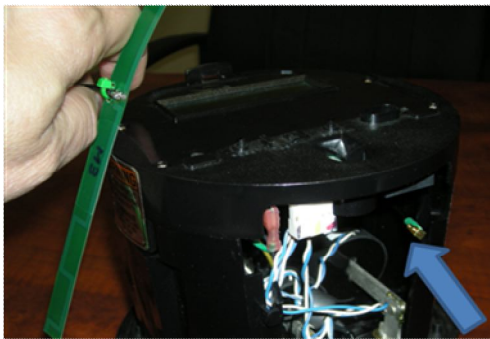


Figure 17
Connect the Antenna
to the RF460 Board



Figure 18
Position of the
Antenna

3. Secure the antenna by using the tape supplied with your AMI Mounting Board Kit, Note the location of the Antenna before Taping. It should be 1.5" from the front edge of the Electronic Housing (see Figure 19)

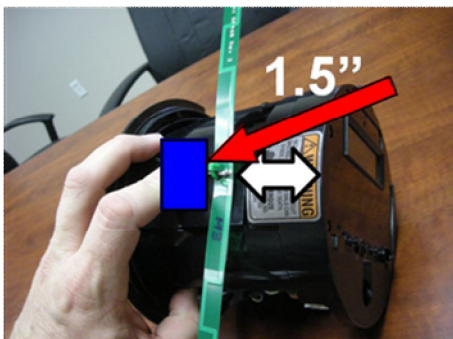


Figure 19
Securing the Antenna

Closing the S4e Meter

1. Place the FCC Label supplied in your AMI Mounting Board Kit to the Label Cover (see Figure 20)
2. Replace the Plastic Cover and turn Clock-wise to tighten (see Figure 21)
3. Place the T-Seal and bend (see Figure 22)

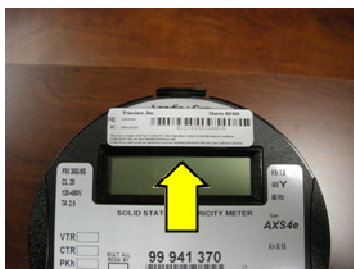


Figure 20
Place the FCC
Label



Figure 21
Replace the
Plastic Cover



Figure 22
Replace the T-Seal