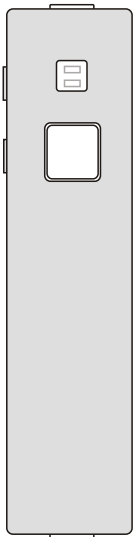
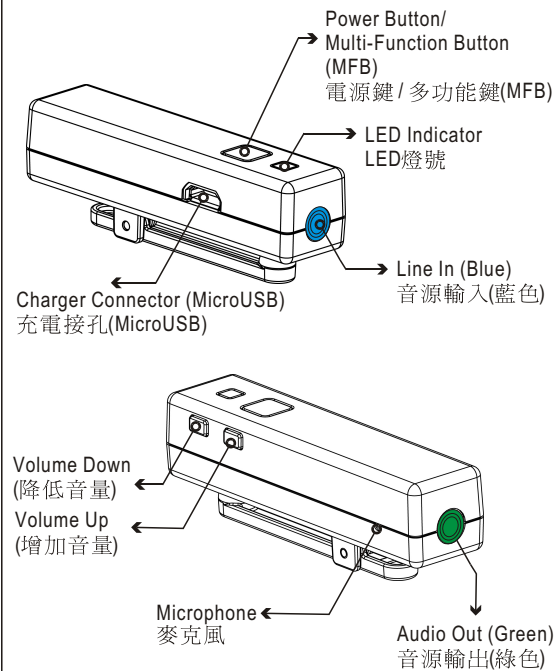


# Bluetooth® Stereo Headset

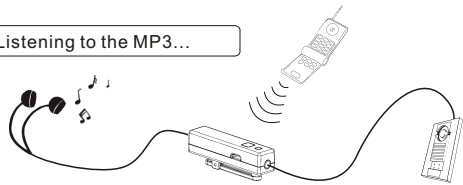


## CONNECTORS

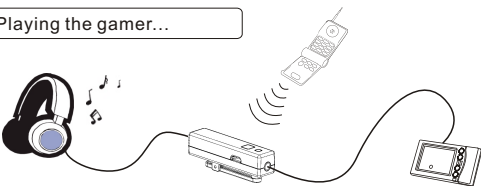


## HOW TO CONNECT...

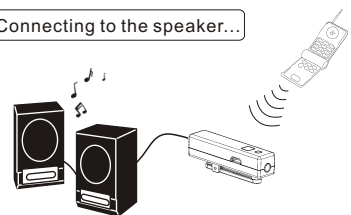
Listening to the MP3...



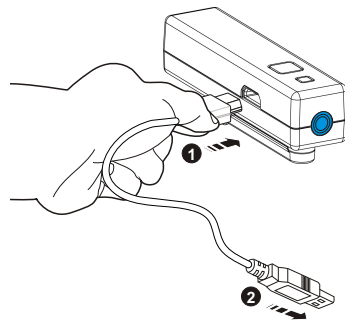
Playing the gamer...



Connecting to the speaker...



## RECHARGING



1. Connect the MicroUSB connector to the Bluetooth® stereo headset.
2. Connect the other side to the PC USB connector.

### Important!!!

- The Bluetooth® stereo headset will be power off and reset when recharging
- It will be power off automatically if there is no connection in 10 minutes.
- You will hear tone indicator or see the red LED flashes every 30 seconds when low battery.
- 當您插上電源線充電時,它將會自動關閉
- 若10分鐘內沒有連線時,它將會自動關閉
- 當它在低電量時,您會聽到嘟嘟聲,每30秒紅色LED燈會閃爍一次

## BASIC OPERATIONS

Power On  
(Red and Blue LED light 1~2s)  
開啓電源(紅及藍LED亮1~2秒)

When it is Off...



Power Off (Red LED lights 3s)  
關閉電源(紅色LED亮3秒)

When it is On...



Paring (Red and Blue LED flash)  
配對(紅藍LED交錯閃爍)

When it is On but no paired device...



\*PIN Code : 0000  
\*配對碼: 0000

\*Reject a Call  
\*拒接來電

When it is ringing...



\*Redial the Last Number  
\*末碼重撥

When it is On & Paired...



\*Voice Dial  
\*語音撥號

When it is On & Paired...



\*This operation may be supported by your phone  
\*該操作功能需視您的手機是否支援

Answer a Call  
應接來電

When it is ringing...



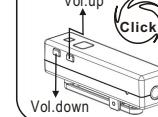
End a Call  
結束通話

When talking...



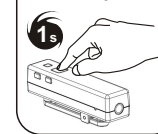
Vol. Up / Down  
增減音量

When it is On...



\*Transfer a Call  
between Host & Headset  
\*語音切換

When talking...



\*Answer Call  
Waiting & Hold  
\*接聽插播並保留目前通話

When hearing call  
waiting indicator...



\*Answer Call  
Waiting & Disconnect  
\*接聽插播並結束目前通話

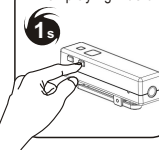
When hearing call  
waiting indicator...



## AVRCP OPERATIONS

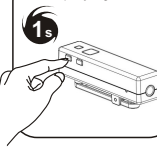
Forward  
下一首

When playing music...



Backward  
上一首

When playing music...



Play / Pause  
播放 / 暫停

When playing music...



## SPECIAL OPERATIONS

Mute Microphone  
關閉麥克風

When talking...



Reset Paired Device List  
清除配對清單

When it is On...



### Federal Communication Commission Interference Statement

This equipment has been tested and found to comply with the limits for a Class B digital device, pursuant to Part 15 of the FCC Rules. These limits are designed to provide reasonable protection against harmful interference in a residential installation. This equipment generates, uses and can radiate radio frequency energy and, if not installed and used in accordance with the instructions, may cause harmful interference to radio communications. However, there is no guarantee that interference will not occur in a particular installation. If this equipment does cause harmful interference to radio or television reception, which can be determined by turning the equipment off and on, the user is encouraged to try to correct the interference by one of the following measures:

- Reorient or relocate the receiving antenna.
- Increase the separation between the equipment and receiver.
- Connect the equipment into an outlet on a circuit different from that to which the receiver is connected.
- Consult the dealer or an experienced radio/TV technician for help.

FCC Caution: Any changes or modifications not expressly approved by the party responsible for compliance could void the user's authority to operate this equipment.

This device and its antenna(s) must not be co-located or operating in conjunction with any other antenna or transmitter.

This device complies with Part 15 of the FCC Rules. Operation is subject to the following two conditions: (1) This device may not cause harmful interference, and (2) this device must accept any interference received, including interference that may cause undesired operation.

根據中華民國國家通訊傳播委員會低功率電波輻射性電機管理辦法規定:

第十二條 經型式認證合格之低功率射頻電機,非經許可,公司、商號或使用者均不得擅自變更頻率、加大功率或變更原設計之特性及功能。

第十四條 低功率射頻電機之使用不得影響飛航安全及干擾合法通信;經發現有干擾現象時,應立即停用,並改善至無干擾時方得繼續使用。前項合法通信,指依電信法規定作業之無線電通信。

低功率射頻電機須忍受合法通信或工業、科學及醫療用電波輻射性電機設備之干擾。

CCXXxxYYyyZzW

