

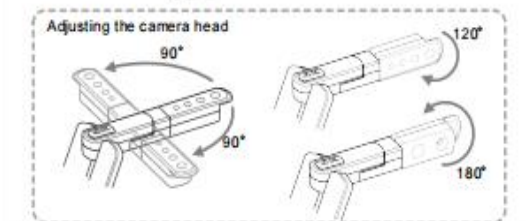
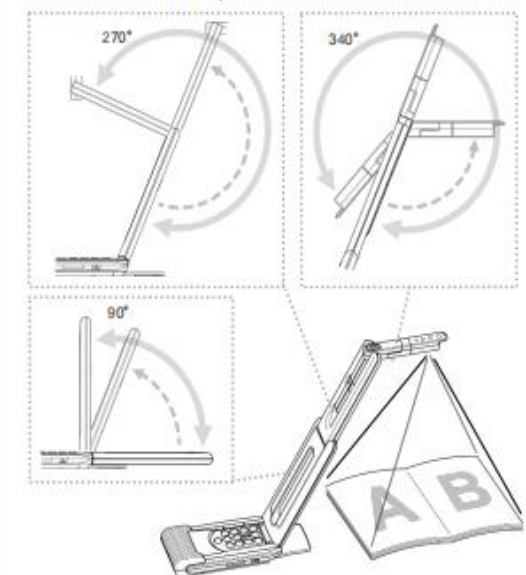
ELMO DOCUMENT CAMERA MODEL: MX-P3W QUICK START GUIDE

Package contents

- MX-P3W
- USB Cable
- AC adapter
- For Japan/ North America only
- For Europe only
- For Japan only
- QUICK START GUIDE
- IMPORTANT SAFEGUARDS [For Japan/North America only]
- Warranty Card [For Japan only]
- 3S service registration sheet
- 3S service registration manual

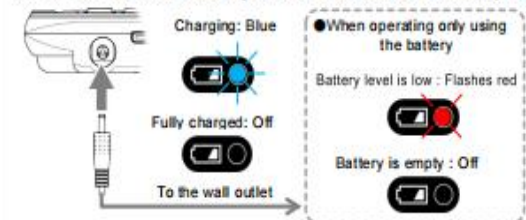
Adjusting the camera direction

The arm can be moved as shown below. Set the arm in the direction you wish to shoot.



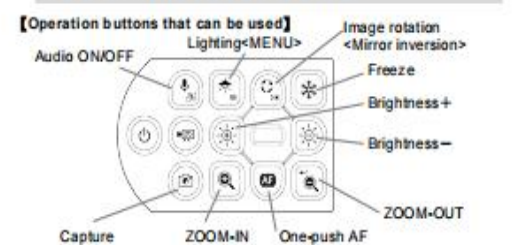
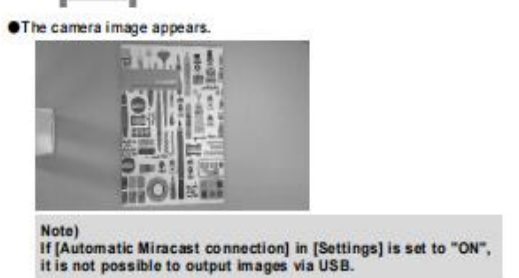
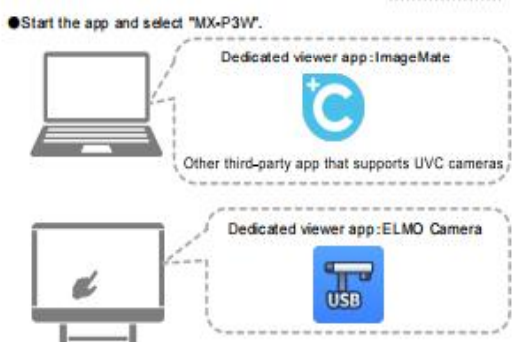
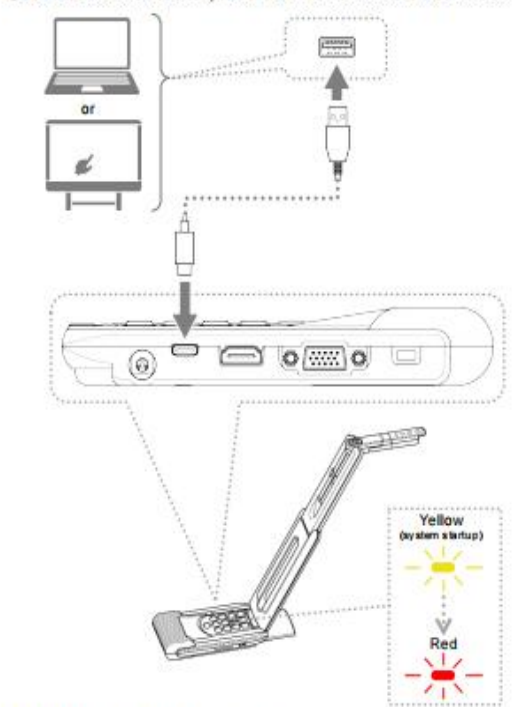
Charging the battery

The MX-P3W has a built-in battery and can be used without an AC adapter.



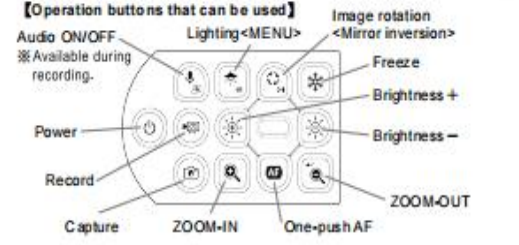
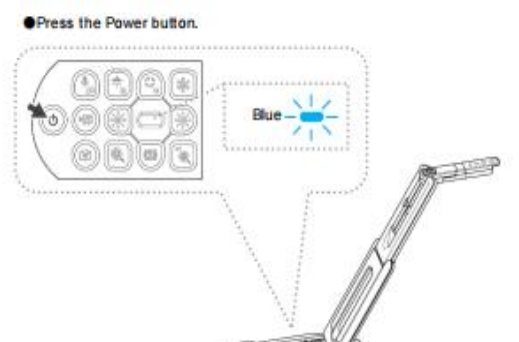
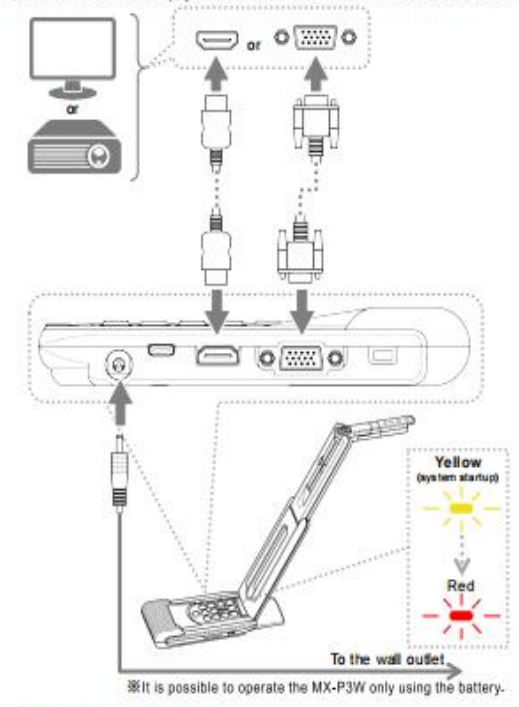
Displaying the camera image in the app (via USB)

●Connect the MX-P3W to a computer or the ELMO BOARD with the USB cable.



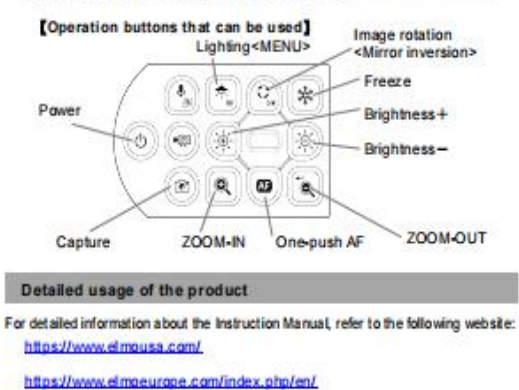
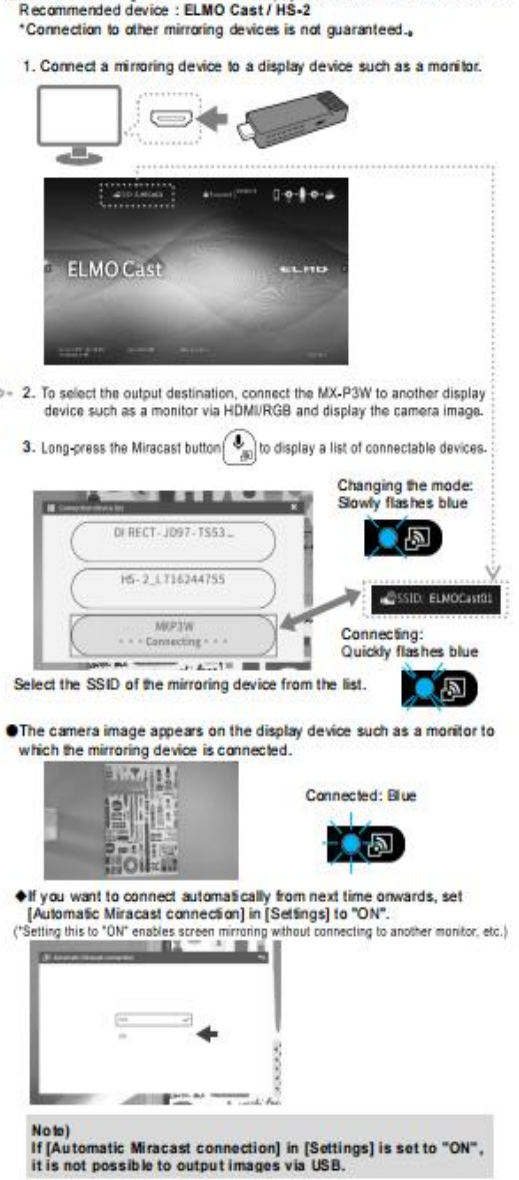
Displaying the camera image using a monitor or projector (via HDMI/RGB)

●Connect the MX-P3W to a display device such as a monitor with the HDMI cable or RGB cable.



Displaying the camera image using the screen mirroring feature (wireless: Miracast)

●Connect to a mirroring device connected to a display device such as a monitor via Miracast. Recommended device: ELMO Cast / HS-2 *Connection to other mirroring devices is not guaranteed.



FCC regulatory conformance:

This device complies with Part 15 of the FCC Rules.

Operation is subject to the following two conditions:

- (1) This device may not cause harmful interference.
- (2) This device must accept any interference received, including interference that may cause undesired operation.

NOTE: This equipment has been tested and found to comply with the limits for a Class A digital device, pursuant to part 15 of the FCC Rules. These limits are designed to provide reasonable protection against harmful interference in a residential installation.

This equipment generates uses and can radiate radio frequency energy and, if not installed and used in accordance with the instructions, may cause harmful interference to radio communications. However, there is no guarantee that interference will not occur in a particular installation. If this equipment does cause harmful interference to radio or television reception, which can be determined by turning the equipment off and on, the user is encouraged to try to correct the interference by one or more of the following measures:

- Reorient or relocate the receiving antenna.
- Increase the separation between the equipment and receiver.
- Connect the equipment into an outlet on a circuit different from that to which the receiver is connected.
- Consult the dealer or an experienced radio/TV technician for help

NOTE: The manufacturer is not responsible for any radio or TV interference caused by unauthorized modifications to this equipment. Such modifications could void the user's authority to operate the equipment.

FCC RF exposure statement

This equipment complies with FCC radiation exposure limits set forth for an uncontrolled environment. This equipment should be installed and operated with minimum distance of 20 cm between the radiator and your body. This transmitter must not be co-located or operating

IC Warning

This device complies with CAN ICES-003 (B)/NMB-003(B). This device contains licence-exempt transmitter(s)/ receiver(s) that comply with Innovation, Science and Economic Development Canada's licence-exempt RSS(s). Operation is subject to the following two conditions:

- (1) This device may not cause interference.
- (2) This device must accept any interference, including interference that may cause undesired operation of the device.

Cet appareil est conforme à la norme CAN ICES-003 (B)/ NMB-003 (B).

Cet appareil contient des émetteurs / récepteurs exempt (s) de licence qui sont conformes aux RSS exemptes de licence d'Innovation, Sciences et Développement économique Canada. Son fonctionnement est soumis aux deux conditions suivantes:

- (1) Cet appareil ne doit pas provoquer d'interférences.
- (2) Cet appareil doit accepter toute interférence, y compris les interférences susceptibles de provoquer un fonctionnement indésirable de l'appareil.

IC Exposure Statement

This equipment complies with IC radiation exposure limits set forth for an uncontrolled environment. This equipment should be installed and operated with minimum distance of 20 cm between the radiator and your body. This transmitter must not be co-located or operating in conjunction with any other antenna or transmitter. Cet équipement est conforme aux limites d'exposition aux rayonnements de la IC établies pour un environnement non contrôlé. Cet équipement doit être installé et fonctionner à au moins 20cm de distance d'un radiateur ou de votre corps.