

# EMC TEST REPORT



Report No.: 16020755-FCC-E

Supersede Report No.: N/A

Applicant	Shanghai Smarfid Security Equipment Co.,Ltd		
Product Name	Magic Series 125KHZ Reader		
Main Model	HR322-8K		
Serial Model	EM322-8K HR322-8N、EM322-8N		
Test Standard	FCC Part 15 Subpart C:2015, ANSI C63.10:2013		
Test Date	July 25 to July 27, 2016		
Issue Date	August 04, 2016		
Test Result	<input checked="" type="checkbox"/> Pass <input type="checkbox"/> Fail		
Equipment complied with the specification	<input checked="" type="checkbox"/>		
Equipment did not comply with the specification	<input type="checkbox"/>		
<i>Louise Tu</i>	<i>Miro Bao</i>		
Louise Tu Test Engineer	Miro Bao Checked By		
This test report may be reproduced in full only Test result presented in this test report is applicable to the tested sample only			

Issued by:  
SIEMIC (Nanjing-China) Laboratories  
2-1 Longcang Avenue Yuhua Economic and  
Technology Development Park, Nanjing, China  
Tel:+86(25)86730128/86730129 Fax:+86(25)86730127 Email: China@siemic.com.cn

## Laboratories Introduction

SIEMIC, headquartered in the heart of Silicon Valley, with superior facilities in US and Asia, is one of the leading independent testing and certification facilities providing customers with one-stop shop services for Compliance Testing and Global Certifications.



In addition to testing and certification, SIEMIC provides initial design reviews and compliance management throughout a project. Our extensive experience with China, Asia Pacific, North America, European, and International compliance requirements, assures the fastest, most cost effective way to attain regulatory compliance for the global markets.

### Accreditations for Conformity Assessment

Country/Region	Scope
USA	EMC, RF/Wireless, SAR, Telecom
Canada	EMC, RF/Wireless, SAR, Telecom
Taiwan	EMC, RF, Telecom, SAR, Safety
Hong Kong	RF/Wireless, SAR, Telecom
Australia	EMC, RF, Telecom, SAR, Safety
Korea	EMI, EMS, RF, SAR, Telecom, Safety
Japan	EMI, RF/Wireless, SAR, Telecom
Singapore	EMC, RF, SAR, Telecom
Europe	EMC, RF, SAR, Telecom, Safety

Test Report No.	16020755-FCC-E
Page	3 of 30

This page has been left blank intentionally.

## CONTENTS

1. REPORT REVISION HISTORY.....	5
2. CUSTOMER INFORMATION .....	5
3. TEST SITE INFORMATION.....	5
4. EQUIPMENT UNDER TEST (EUT) INFORMATION .....	6
5. TEST SUMMARY .....	7
6. MEASUREMENTS, EXAMINATION AND DERIVED RESULTS .....	8
6.1 AC POWER LINE CONDUCTED EMISSIONS.....	8
6.2 RADIATED EMISSIONS.....	12
ANNEX A. TEST INSTRUMENT.....	16
ANNEX B. EUT AND TEST SETUP PHOTOGRAPHS .....	17
ANNEX C. TEST SETUP AND SUPPORTING EQUIPMENT.....	26
ANNEX D. USER MANUAL / BLOCK DIAGRAM / SCHEMATICS / PARTLIST.....	29
ANNEX E. DECLARATION OF SIMILARITY .....	30

Test Report No.	16020755-FCC-E
Page	5 of 30

## 1. Report Revision History

Report No.	Report Version	Description	Issue Date
16020755-FCC-E	NONE	Original	August 04, 2016

## 2. Customer information

Applicant Name	Shanghai Smarfid Security Equipment Co.,Ltd
Applicant Add	Room 301,4th Bldg., No.4 TongLi Road, SongJiang District,Shanghai 201615,China
Manufacturer	Shanghai Smarfid Security Equipment Co.,Ltd
Manufacturer Add	Room 301,4th Bldg., No.4 TongLi Road, SongJiang District,Shanghai 201615,China

## 3. Test site information

Lab performing tests	SIEMIC (Nanjing-China) Laboratories
Lab Address	2-1 Longcang Avenue Yuhua Economic and Technology Development Park, Nanjing, China
FCC Test Site No.	986914
IC Test Site No.	4842B-1
Test Software	Labview of SIEMIC version 1.0

#### 4. Equipment under Test (EUT) Information

Description of EUT: Magic Series 125KHZ Reader

Main Model: HR322-8K

Serial Model: EM322-8K HR322-8N、EM322-8N

Date EUT received: July 21, 2016

Test Date(s): July 25 to July 27, 2016

Operating Frequency : 125kHz

Antenna Gain 15 dBi

Type of Modulation: ASK

Number of Channels: 1 CH

Trade Name : N/A

FCC ID: X3A-MG382125KH

Note: the difference between these models please refer to **ANNEX E. DECLARATION OF SIMILARITY.**

## 5. Test Summary

The product was tested in accordance with the following specifications.  
All testing has been performed according to below product classification:

FCC Rules	Description of Test	Result
§15.207; ANSI C63.10: 2013	AC Power Line Conducted Emissions	Compliance
§15.209; ANSI C63.10: 2013	Radiated Emissions	Compliance

### Measurement Uncertainty


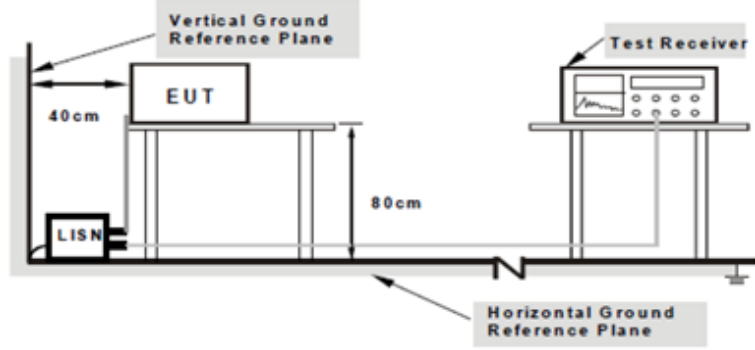


Emissions		
Test Item	Description	Uncertainty
Radiated Emissions	Confidence level of approximately 95% (in the case where distributions are normal), with a coverage factor of 2 (for EUTs < 0.5m X 0.5m X 0.5m)	3.952dB

## 6. Measurements, Examination And Derived Results

### 6.1 AC Power Line Conducted Emissions

Temperature	24°C
Relative Humidity	50%
Atmospheric Pressure	1019mbar
Test date :	July 27, 2016
Tested By :	Louise Tu

#### Requirement(s):

Spec	Requirement	Applicable														
§15.207	<p>For Low-power radio-frequency devices that is designed to be connected to the public utility (AC) power line, the radio frequency voltage that is conducted back onto the AC power line on any frequency or frequencies, within the band 150 kHz to 30 MHz, shall not exceed the limits in the following table, as measured using a 50 [mu]H/50 ohms line impedance stabilization network (LISN). The lower limit applies at the boundary between the frequencies ranges.</p> <table border="1"> <thead> <tr> <th rowspan="2">Frequency ranges (MHz)</th><th colspan="2">Limit (dBµV)</th></tr> <tr> <th>QP</th><th>Average</th></tr> </thead> <tbody> <tr> <td>0.15 ~ 0.5</td><td>66 – 56</td><td>56 – 46</td></tr> <tr> <td>0.5 ~ 5</td><td>56</td><td>46</td></tr> <tr> <td>5 ~ 30</td><td>60</td><td>50</td></tr> </tbody> </table>	Frequency ranges (MHz)	Limit (dBµV)		QP	Average	0.15 ~ 0.5	66 – 56	56 – 46	0.5 ~ 5	56	46	5 ~ 30	60	50	
Frequency ranges (MHz)	Limit (dBµV)															
	QP	Average														
0.15 ~ 0.5	66 – 56	56 – 46														
0.5 ~ 5	56	46														
5 ~ 30	60	50														
Test Setup	 <p style="text-align: center;"> <b>Note: 1.</b>Support units were connected to second LISN.  <b>2.</b>Both of LISNs (AMN) are 80cm from EUT and at least 80cm from other units and other metal planes support units.         </p>															
Procedure	<ol style="list-style-type: none"> <li>The EUT and supporting equipment were set up in accordance with the requirements of the standard on top of a 1.5m x 1m x 0.8m high, non-metallic table.</li> <li>The power supply for the EUT was fed through a 50W/50mH EUT LISN, connected to filtered mains.</li> <li>The RF OUT of the EUT LISN was connected to the EMI test receiver via a low-loss coaxial cable.</li> <li>All other supporting equipment were powered separately from another main supply.</li> <li>The EUT was switched on and allowed to warm up to its normal operating condition.</li> <li>A scan was made on the NEUTRAL line (for AC mains) or Earth line (for DC power) over the required frequency range using an EMI test receiver.</li> <li>High peaks, relative to the limit line, were then selected, The EMI test receiver was then tuned to the selected frequencies and the necessary measurements made with a receiver bandwidth setting of 10kHz.</li> <li>Steps 6-7 were repeated for the LIVE line (for AC mains) or DC line (for DC power).</li> </ol>															
Remark																
Result	 Pass  Fail															



Test Report No.	16020755-FCC-E
Page	9 of 30

Test Data	<input checked="" type="checkbox"/> Yes	<input type="checkbox"/> N/A
Test Plot	<input checked="" type="checkbox"/> Yes	<input type="checkbox"/> N/A

#### Data sample

Frequency (MHz)	Quasi-Peak (dBμV)	Limit (dBμV)	Margin (dB)	Average (dBμV)	Limit (dBμV)	Margin (dB)	Factors (dB)
xxx	56.21	66.00	-9.79	39.20	56.00	-16.80	12.22

Frequency (MHz) = Emission frequency in MHz

Quasi-Peak/Average (dBμV)=Receiver Reading(dBμV)+ Factor(dB)

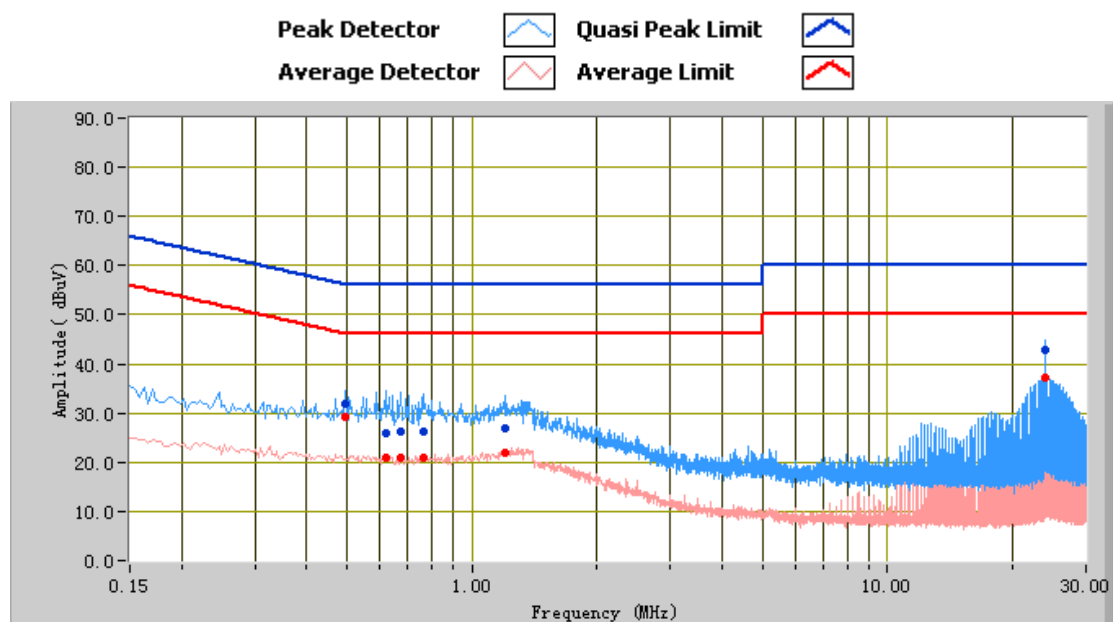
Limit(dBμV)=Limit stated in standard

Factor (dB)= cable loss+ Insertion loss of LISN+ Insertion loss of transient limiter (The transient limiter included 10dB attenuation)

#### Calculation Formula:

Margin (dB)=Quasi Peak / Average (dBμV) – limit (dBμV)

Test Mode: Transmitting Mode

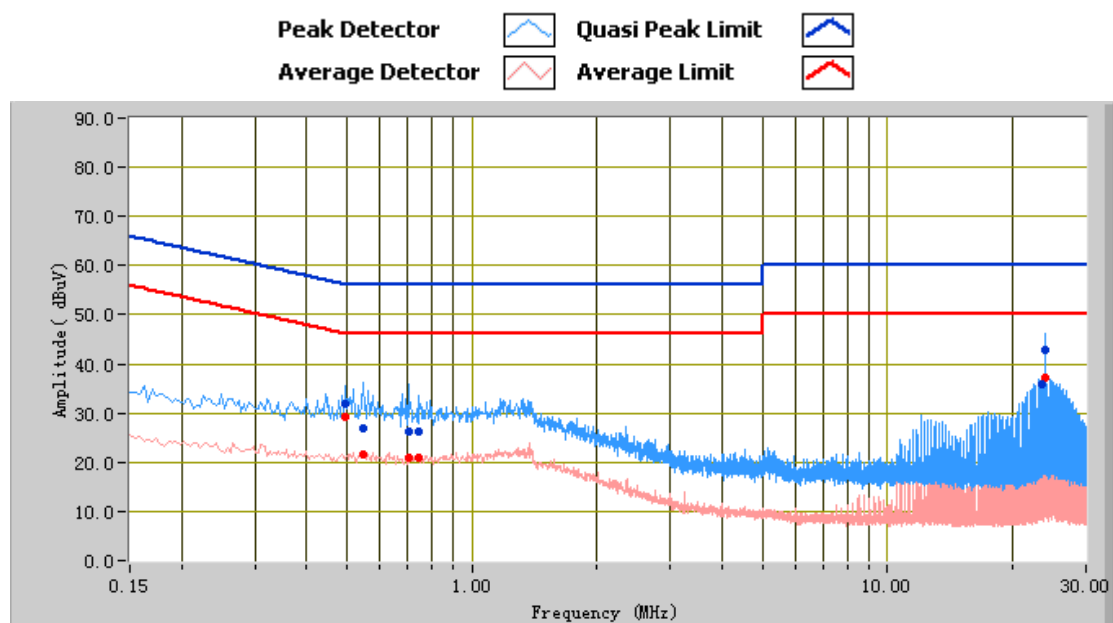


### Test Data

#### Phase Line Plot at 120Vac, 60Hz

Frequency (MHz)	Quasi Peak (dBμV)	Limit (dBμV)	Margin (dB)	Average (dBμV)	Limit (dBμV)	Margin (dB)	Factors (dB)
24.01	42.98	60.00	-17.02	37.29	50.00	-12.71	11.67
0.62	26.03	56.00	-29.97	20.92	46.00	-25.08	10.99
0.67	26.18	56.00	-29.82	21.03	46.00	-24.97	10.95
0.49	31.93	56.10	-24.17	29.11	46.10	-16.99	11.10
0.76	26.10	56.00	-29.90	20.88	46.00	-25.12	10.88
1.20	26.94	56.00	-29.06	22.04	46.00	-23.96	10.72

Test Mode:	Transmitting Mode
------------	-------------------



### Test Data

Phase Neutral Plot at 120Vac, 60Hz

Frequency (MHz)	Quasi Peak (dBμV)	Limit (dBμV)	Margin (dB)	Average (dBμV)	Limit (dBμV)	Margin (dB)	Factors (dB)
24.01	42.73	60.00	-17.27	37.09	50.00	-12.91	11.70
0.55	26.98	56.00	-29.02	21.52	46.00	-24.48	11.03
0.70	26.29	56.00	-29.71	20.99	46.00	-25.01	10.91
0.49	31.82	56.10	-24.28	29.11	46.10	-16.99	11.07
0.75	26.27	56.00	-29.73	20.90	46.00	-25.10	10.88
23.50	35.78	60.00	-24.22	35.84	50.00	-14.16	11.69

## 6.2 Radiated Emissions

Temperature	22°C
Relative Humidity	50%
Atmospheric Pressure	1019mbar
Test date :	July 25, 2016
Tested By :	Louise Tu

### Requirement(s):

Spec	Requirement	Applicable										
\$15.209	<div>Except higher limit as specified elsewhere in other section, the emissions from the low-power radio-frequency devices shall not exceed the field strength levels specified in the following table and the level of any unwanted emissions shall not exceed the level of the fundamental emission. The tighter limit applies at the band edges</div> <table><thead><tr><th>Frequency range (MHz)</th><th>Field Strength (µV/m)</th></tr></thead><tbody><tr><td>30 – 88</td><td>100</td></tr><tr><td>88 – 216</td><td>150</td></tr><tr><td>216 – 960</td><td>200</td></tr><tr><td>Above 960</td><td>500</td></tr></tbody></table>	Frequency range (MHz)	Field Strength (µV/m)	30 – 88	100	88 – 216	150	216 – 960	200	Above 960	500	<div><input checked="" type="checkbox"/></div>
Frequency range (MHz)	Field Strength (µV/m)											
30 – 88	100											
88 – 216	150											
216 – 960	200											
Above 960	500											
Test Setup	<div></div>											
Procedure	<div><div><div>1.</div><div>The EUT was switched on and allowed to warm up to its normal operating condition.</div></div><div><div>2.</div><div>The test was carried out at the selected frequency points obtained from the EUT characterisation. Maximization of the emissions, was carried out by rotating the EUT, changing the antenna polarization, and adjusting the antenna height in the following manner:<div><div>a.</div><div>Vertical or horizontal polarisation (whichever gave the higher emission level over a full rotation of the EUT) was chosen.</div></div><div><div>b.</div><div>The EUT was then rotated to the direction that gave the maximum emission.</div></div><div><div>c.</div><div>Finally, the antenna height was adjusted to the height that gave the maximum emission.</div></div></div></div><div><div>3.</div><div>For emission frequencies measured below and above 1GHz, set the spectrum analyzer on a 100kHz and 1MHz resolution bandwidth respectively for each frequency measured.</div></div><div><div>4.</div><div>Steps 2 and 3 were repeated for the next frequency point, until all selected frequency points were measured.</div></div></div>											
Remark												
Result	<div><div><input checked="" type="checkbox"/> Pass</div><div><input type="checkbox"/> Fail</div></div>											
Test Data	<div><div><input checked="" type="checkbox"/> Yes</div><div><input type="checkbox"/> N/A</div></div>											
Test Plot	<div><div><input checked="" type="checkbox"/> Yes</div><div><input type="checkbox"/> N/A</div></div>											

### Data sample

Frequency (MHz)	Quasi Peak (dBμV/m)	Azimuth	Polarity (H/V)	Height (cm)	Factors (dB)	Limit (dBμV/m)	Margin (dB)
xxx	32.23	181.00	H	350.00	-38.23	40.00	-7.77

Frequency (MHz) = Emission frequency in MHz

Quais-Peak (dBμV/m)= Receiver Reading(dBμV/m)+ Factor(dB)

Azimuth=Position of turn table

Polarity=Polarity of Receiver antenna

Height(cm)= Height of Receiver antenna

Factor (dB)=Antenna factor + cable loss- antenna gain



Limit (dBμV/m)=Limit stated in standard

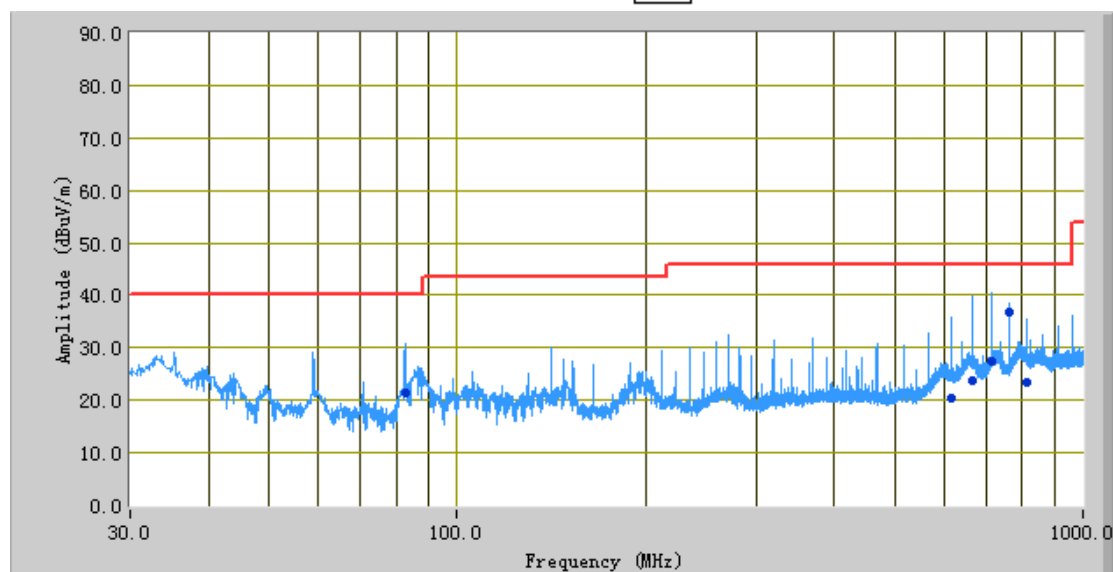
### Calculation Formula:

Margin (dB)=Quasi Peak (dBμV/m) – limit (dBμV/m)

Test Mode:	Transmitting Mode
------------	-------------------

(30MHz - 1GHz)

Peak Detector   
Quasi Peak Limit 





*Test Data*

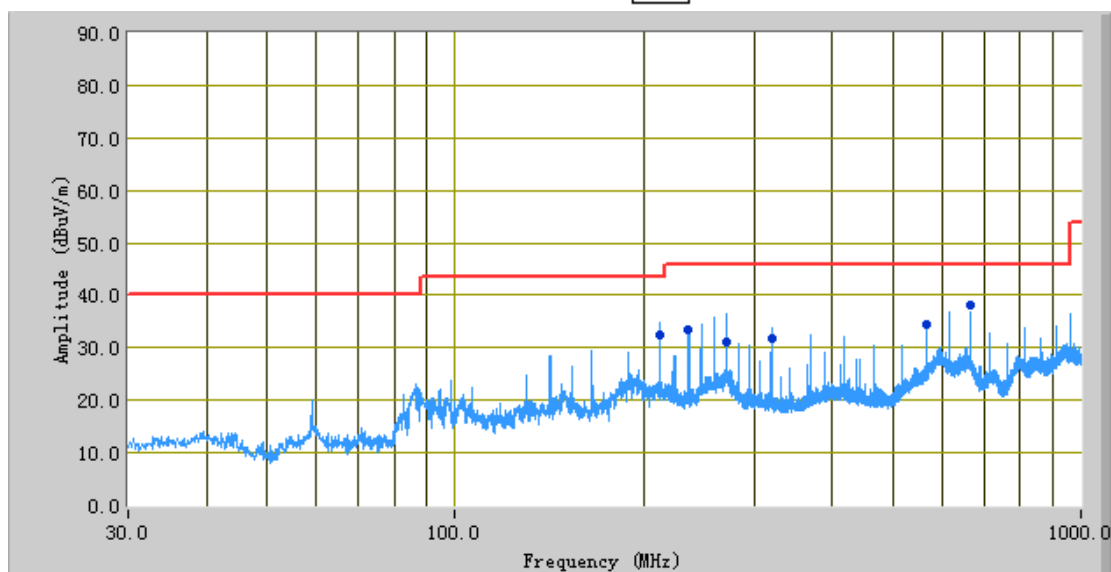
Vertical Polarity Plot @3m

Frequency (MHz)	Quasi Peak (dBμV/m)	Azimuth	Polarity (H/V)	Height (cm)	Factors (dB)	Limit (dBμV/m)	Margin (dB)
714.67	27.39	258.00	V	110.00	-19.54	46.00	-18.61
665.58	23.82	137.00	V	112.00	-20.69	46.00	-22.18
763.86	36.71	262.00	V	110.00	-18.52	46.00	-9.29
82.55	21.27	27.00	V	156.00	-36.93	40.00	-18.73
616.27	20.47	268.00	V	154.00	-22.43	46.00	-25.53
813.41	23.36	207.00	V	312.00	-17.52	46.00	-22.64

Test Mode:	Transmitting Mode
------------	-------------------

(30MHz - 1GHz)

Peak Detector   
Quasi Peak Limit 



*Test Data*

Horizontal Polarity Plot @3m

Frequency (MHz)	Quasi Peak (dBμV/m)	Azimuth	Polarity (H/V)	Height (cm)	Factors (dB)	Limit (dBμV/m)	Margin (dB)
212.53	32.46	288.00	H	148.00	-30.59	43.50	-11.04
665.07	38.29	65.00	H	170.00	-21.44	46.00	-7.71
271.63	30.98	121.00	H	152.00	-28.83	46.00	-15.02
320.24	31.84	273.00	H	117.00	-29.60	46.00	-14.16
566.58	34.37	234.00	H	180.00	-23.09	46.00	-11.63
236.19	33.35	269.00	H	118.00	-28.79	46.00	-12.65

Note: The data (9 kHz - 30 MHz) which below 20 dB to the limit was not recorded.

Note: The highest frequency of the internal sources of the EUT is less than 108 MHz, so the measurement shall only be made up to 1 GHz.

## Annex A. TEST INSTRUMENT

Instrument	Model	Serial #	Cal Date	Cal Due	In use
<b>AC Line Conducted Emissions</b>					
R&S EMI Test Receiver	ESPI3	101216	03/31/2016	03/31/2017	<input checked="" type="checkbox"/>
V-LISN	ESH3-Z5	838979/005	03/31/2016	03/31/2017	<input checked="" type="checkbox"/>
SIEMIC Conducted Labview Emissions software	V1.0	N/A	N/A	N/A	<input checked="" type="checkbox"/>
<b>Radiated Emissions</b>					
Agilent Technologies Spectrum Analyzer	N9010A	MY47191130	03/31/2016	03/31/2017	<input checked="" type="checkbox"/>
R&S EMI Receiver	ESPI3	101216	03/31/2016	03/31/2017	<input checked="" type="checkbox"/>
Antenna (30MHz~6GHz)	JB6	A121411	10/31/2015	10/31/2016	<input checked="" type="checkbox"/>
EMCO Passive Loop Antenna	6509	9909-1469	10/09/2015	10/08/2016	<input checked="" type="checkbox"/>
Hp Agilent Pre-Amplifier	8447F	1937A01160	10/27/2015	10/26/2016	<input checked="" type="checkbox"/>
EMCO Passive Loop Antenna	6509	9909-1469	10/09/2015	10/08/2016	<input checked="" type="checkbox"/>
SIEMIC Radiated Labview Emissions software	V1.0	N/A	N/A	N/A	<input checked="" type="checkbox"/>

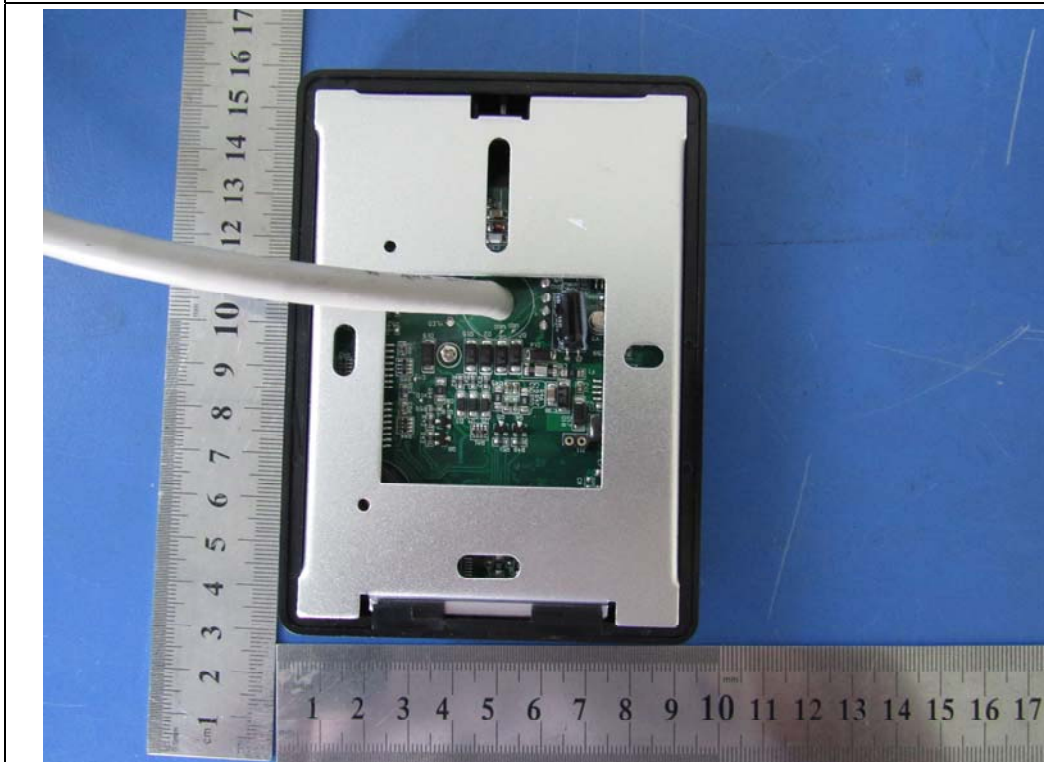


## Annex B. EUT And Test Setup Photographs

### Annex B.i. Photograph: EUT External Photo



EUT – Front View



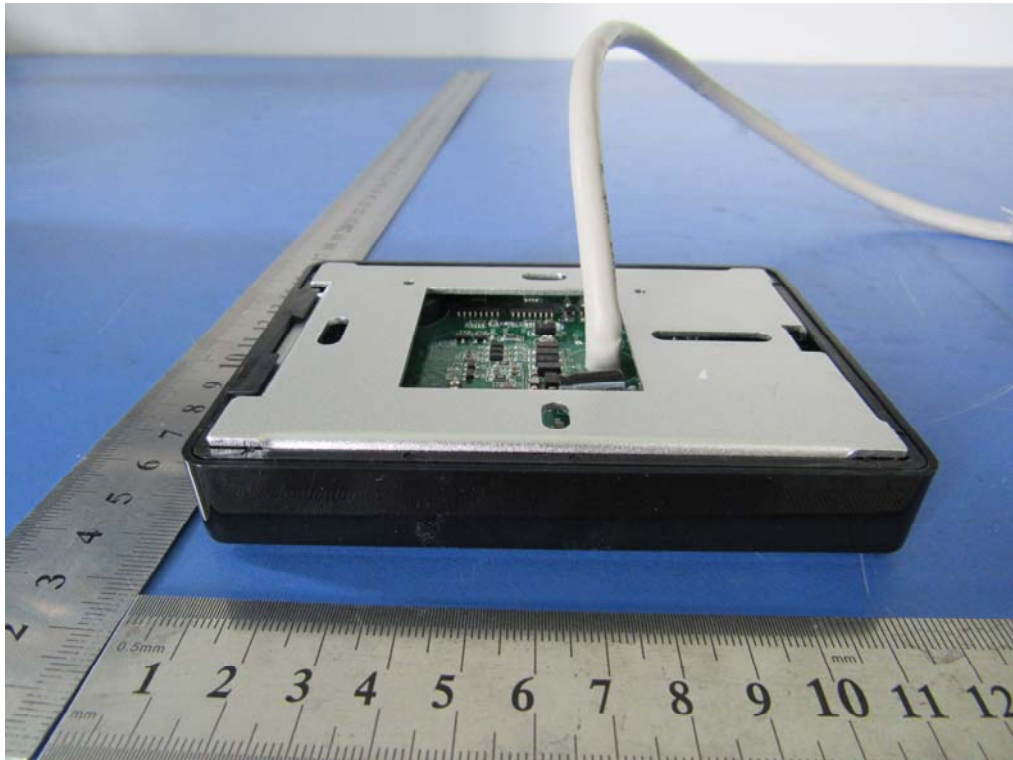
EUT – Rear View



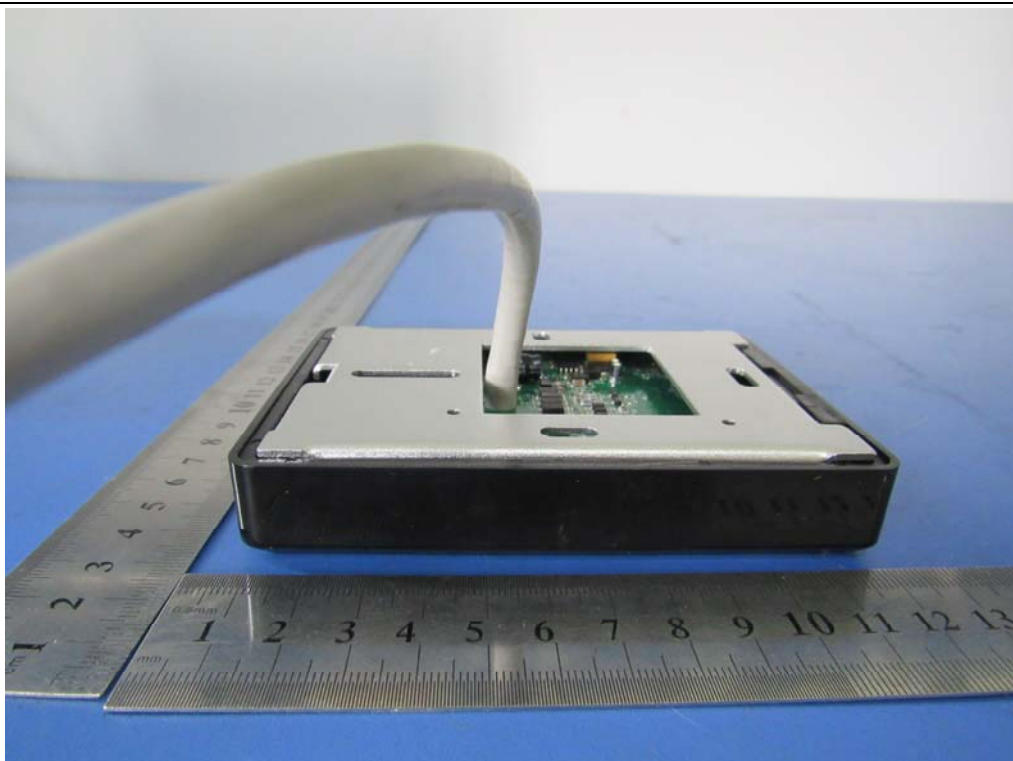
EUT – Top View



EUT – Bottom View



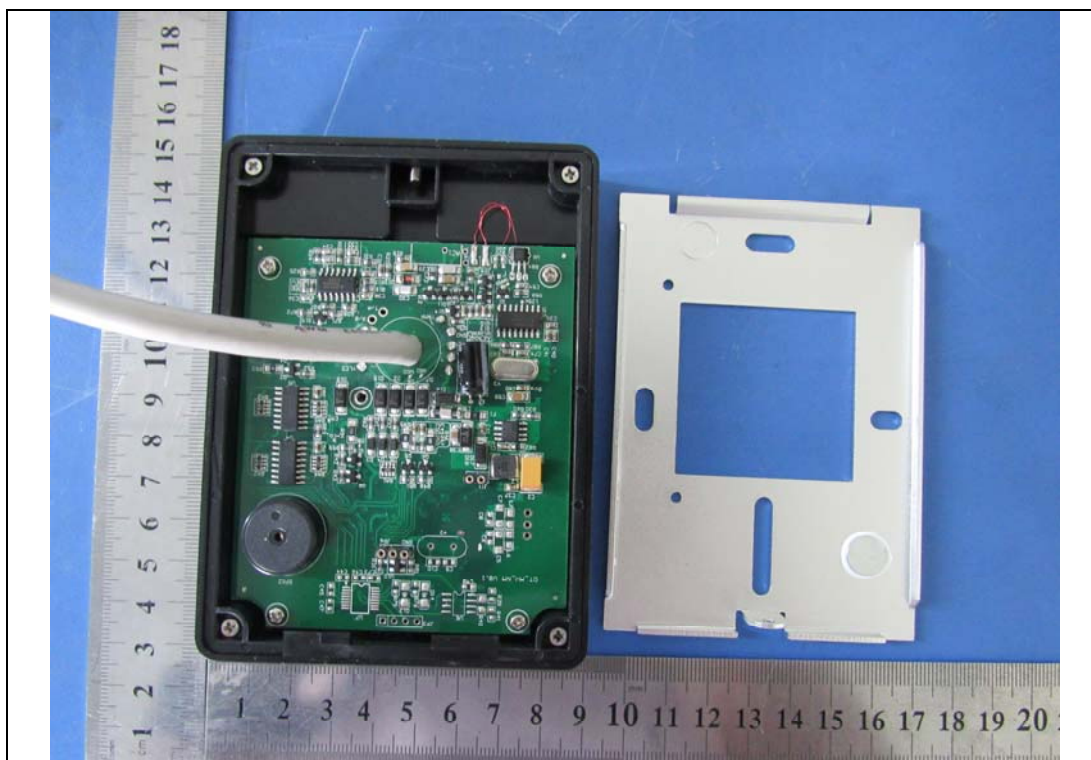
EUT – Left View



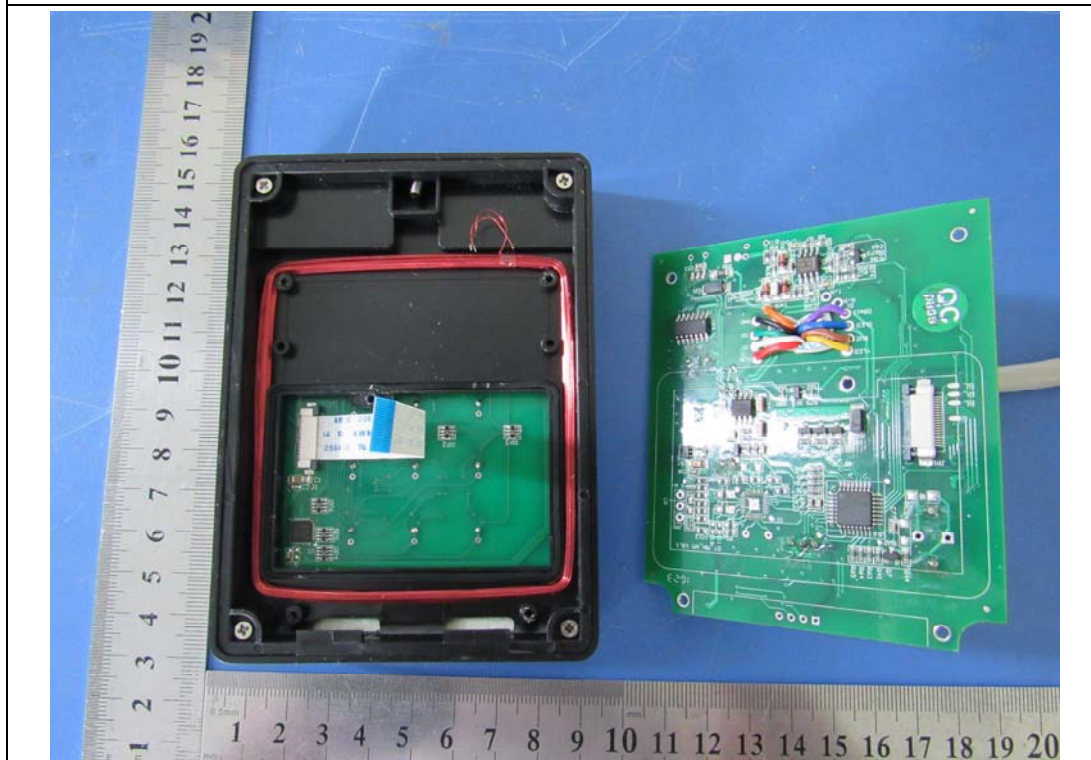
EUT – Right View



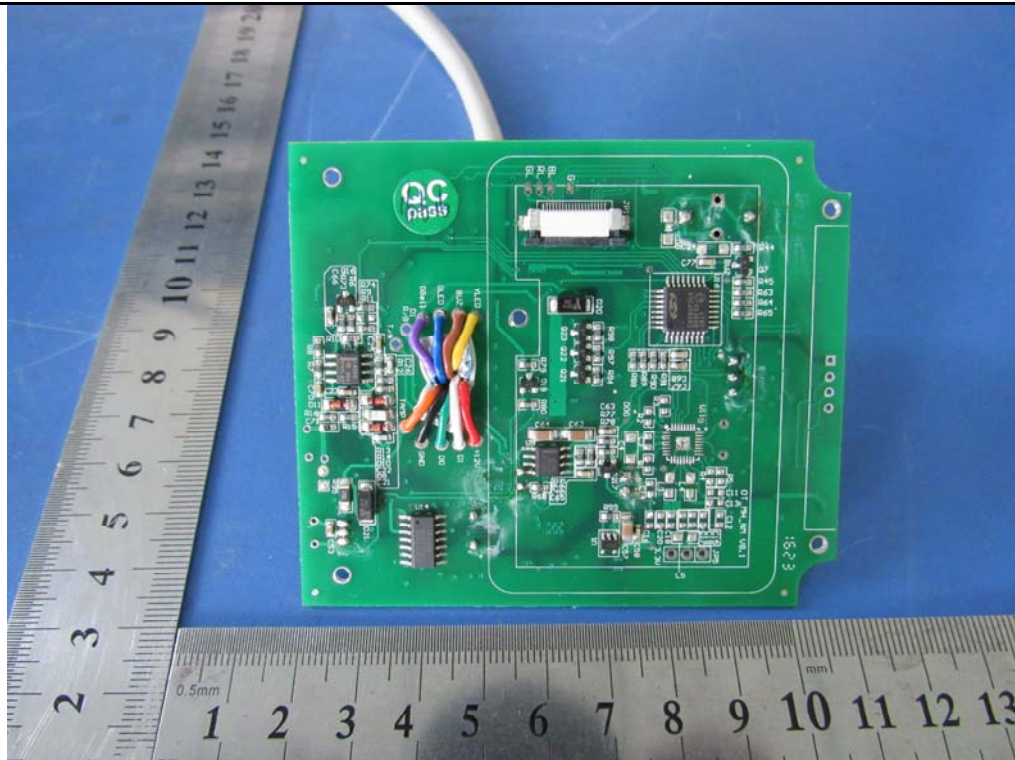
**Annex B.ii. Photograph: EUT Internal Photo**



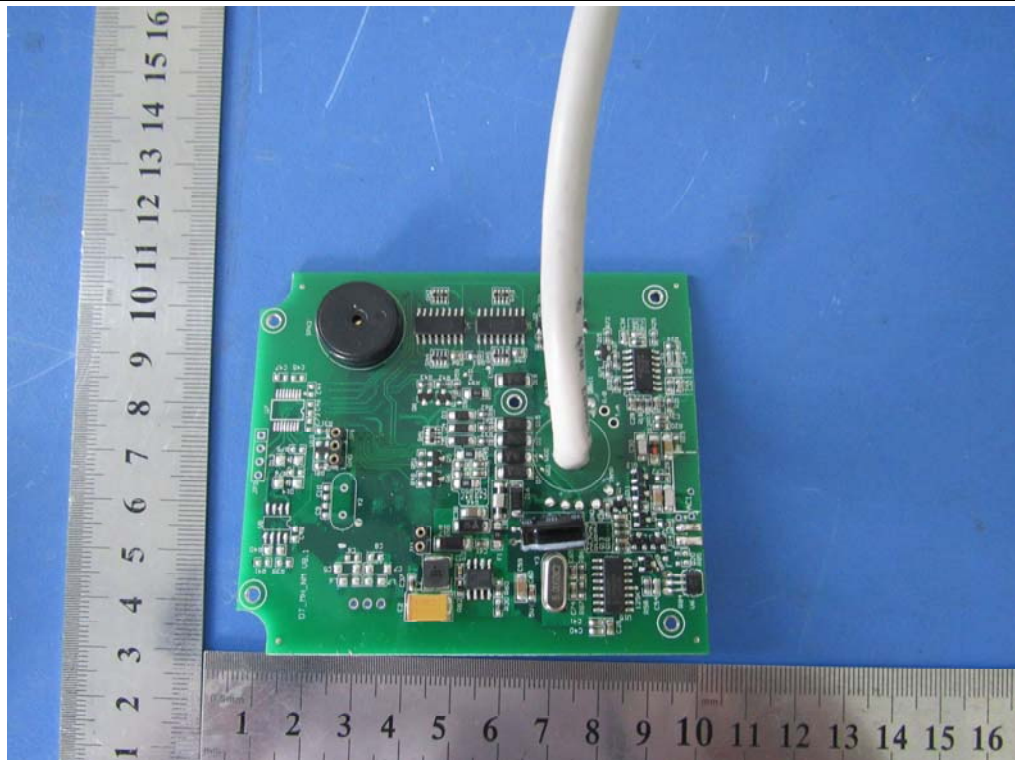
EUT – Uncover Front View 1



EUT – Uncover Front View 2

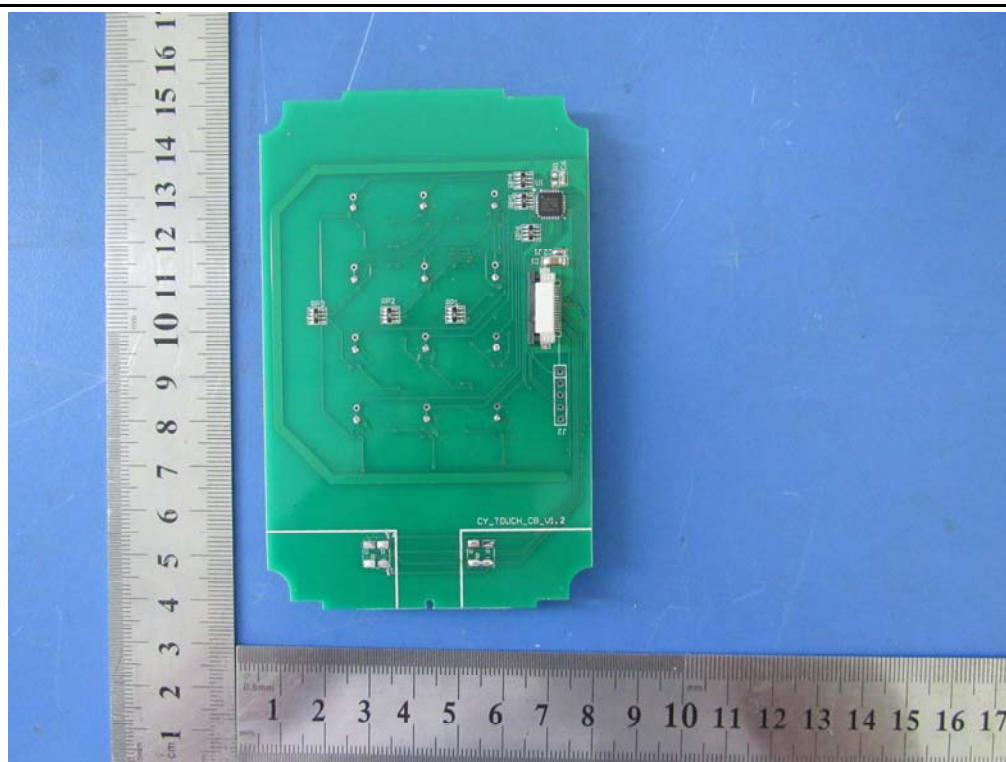


EUT – PCBA 1 Front View

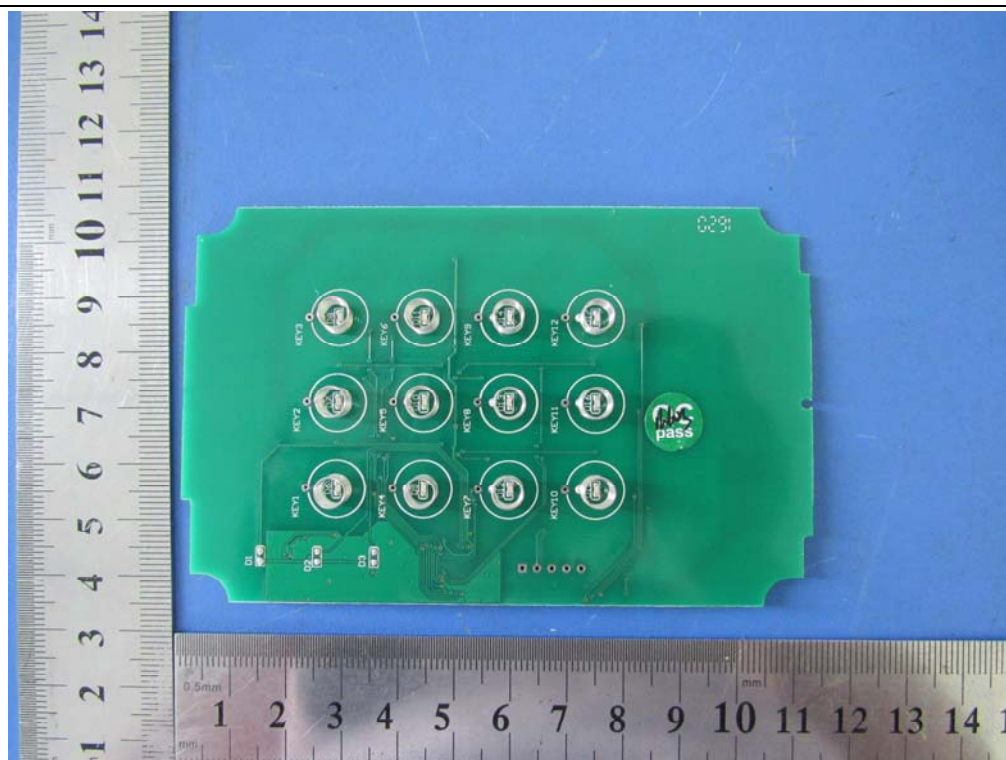


EUT – PCBA 1 Rear View



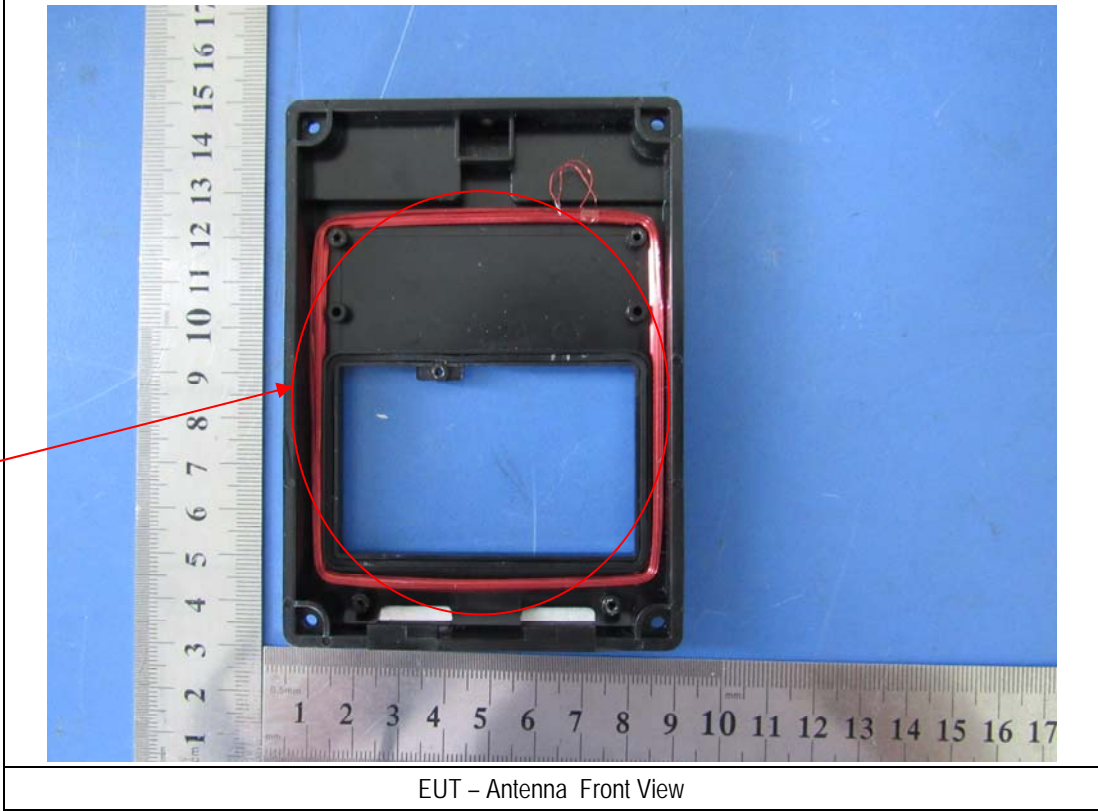


EUT – PCBA 2 Front View



EUT – PCBA 2 Rear View

Antenna



EUT – Antenna Front View

**Annex B.iii. Photograph Test Setup Photo**

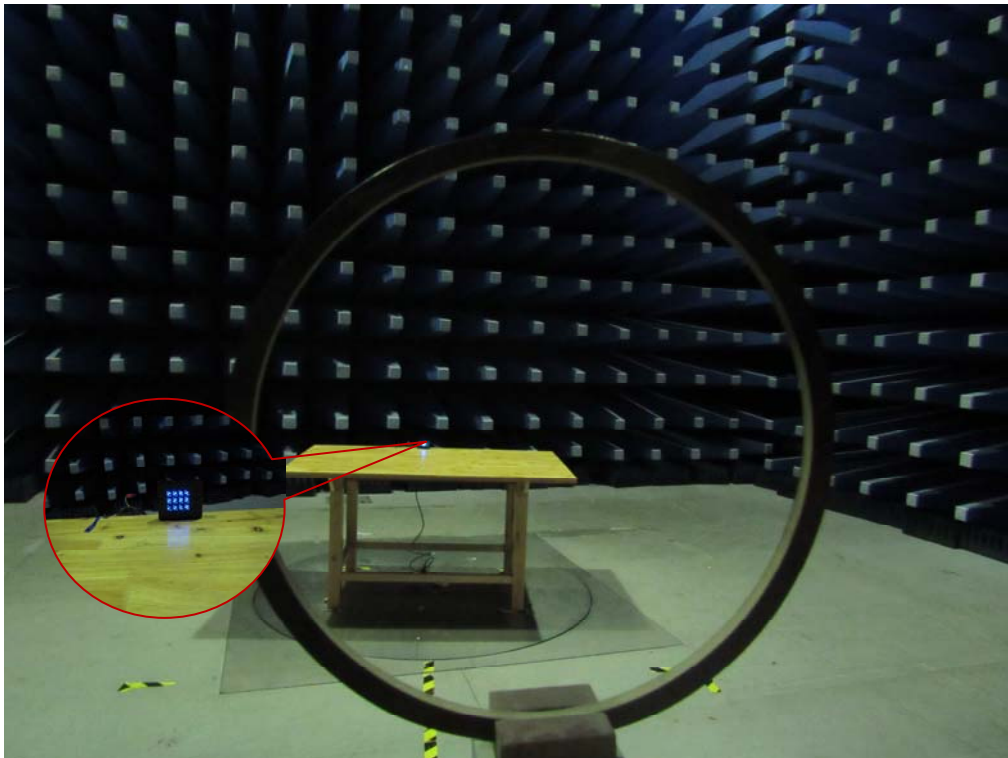


Conducted Emissions Setup Front View

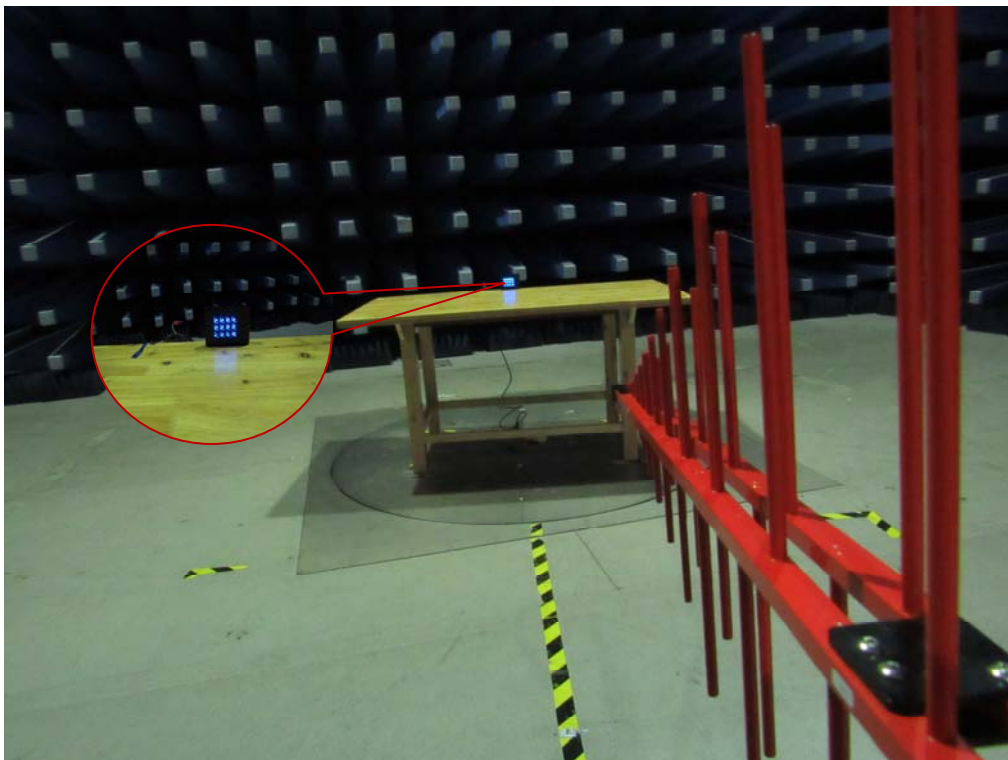


Conducted Emissions Setup Side View





Front View of Radiated Emissions Test Setup below 30MHz

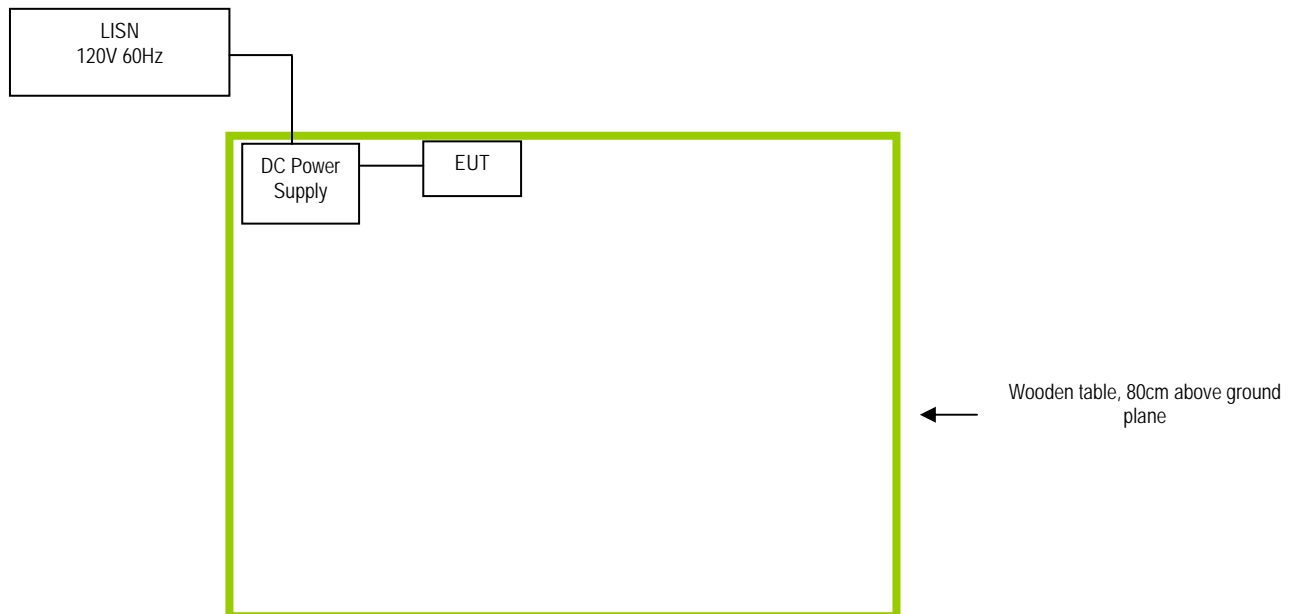


Radiated Emissions Setup Below 1GHz Front View

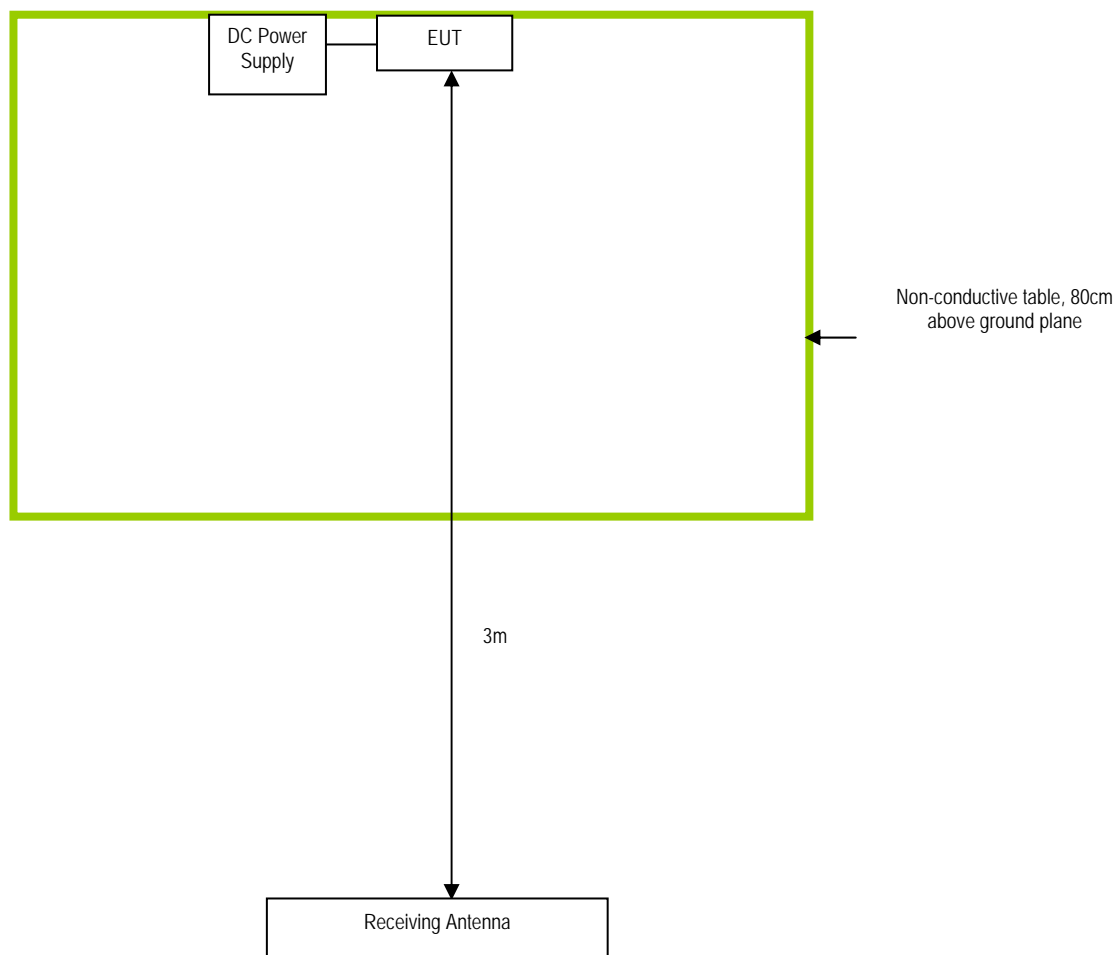
## Annex C. TEST SETUP AND SUPPORTING EQUIPMENT

### Annex C.i. TEST SET UP BLOCK

#### Block Configuration Diagram for Conducted Emissions



## Block Configuration Diagram for Radiated Emissions



Test Report No.	16020755-FCC-E
Page	28 of 30

**Annex C. ii. SUPPORTING EQUIPMENT DESCRIPTION**

The following is a description of supporting equipment and details of cables used with the EUT.

Manufacturer	Equipment Description	Model	Cal Date	Cal Due Date
BK PRECISION	DC Power Supply	1786B	N/A	N/A

Test Report No.	16020755-FCC-E
Page	29 of 30

## Annex D. User Manual / Block Diagram / Schematics / Partlist

Please see Attachment

Test Report No.	16020755-FCC-E
Page	30 of 30

## Annex E. DECLARATION OF SIMILARITY

# SMARFID

Shanghai Smarfid Security Equipment Co., Ltd.

Add: Room 301, 4th Bldg., No.4 TongLi Road, SongJiang District, Shanghai 201615,  
China

Tel: (86-21) 54260103, 54260132 ext.215 Fax: (86-21) 54260132 ext.222

To: SIEMIC INC

## Declaration letter

Dear :

For our business issue and marketing requirement, we would like to list different models numbers on the FCC certificate and reports, as following:

Model No: HR322-8K

EM322-8K HR322-8N, EM322-8N

The four models have the same Circuits, components and color.

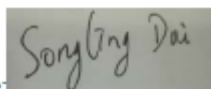
The difference of these models are have different model name, but others differences as follows:

HR322-8K , EM322-8K, has buttons but HR322-8N, EM322-8N,has no buttons.

The card they can read is different,

Thank you!

Signature:



Printed name/title: Songling Dai