

User Manual

USB WALN Adapter for

802.11n USB
dongle

Contents

Chapter 1 Federal communications commission notice.....	1
Chapter 2 Getting Start.....	2
Installation.....	2
Chapter 3 Management Guide	6
Making a Basic Network Connection.....	6

Federal Communications Commission Notice

This device complies with part 15 of the FCC Rules. Operation is subject to the following two conditions:

- (1) This device may not cause harmful interference, and**
- (2) This device must accept any interference received, including interference that may cause undesired operation.**

This equipment has been tested and found to comply with the limits for a Class B digital device, pursuant to Part 15 of the FCC Rules. These limits are designed to provide reasonable protection against harmful interference in a residential installation. This equipment generates, uses, and can radiate radio frequency energy and, if not installed and used in accordance with the instructions, may cause harmful interference to radio communications. However, there is no guarantee this equipment does not cause harmful interference to radio or TV reception. This can be determined by turning the equipment on and off. The user is encouraged to try to correct the interference by one or more of the following measures:

- **Reorient or relocate the receiving antenna.**
- **Increase the separation between the equipment and receiver.**
- **Connect the equipment into an outlet on a circuit different from that to which the receiver is connected.**
- **Consult the dealer or an experienced radio or television technician for help.**

FCC RF Radiation Exposure Statement

1. This Transmitter must not be collocated or operating in conjunction with any other antenna or transmitter.

2. This equipment complies with FCC RF radiation exposure limits set forth for an uncontrolled environment. This device was tested for typical lap held operations with the device contacted directly to the human body to the back side of the notebook computer. To maintain compliance with FCC RF exposure compliance requirements, avoid direct contact to the transmitting antenna during transmitting.

Modifications

The FCC requires the user to be notified that any changes or modifications made to the device that are not expressly approved

by UNI LINK Technology Co., Ltd. may void the user's authority to operate the equipment.

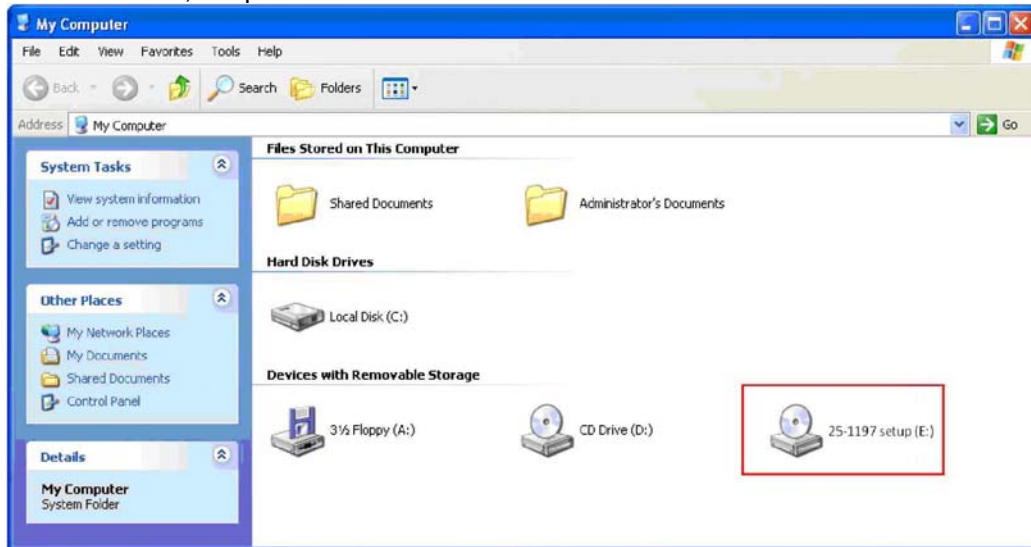
Installation

1. If you insert the Wireless LAN USB Adaptor into your computer USB port, the following hardware setup wizard will pop up. Click **Cancel** to install driver from installation CD.

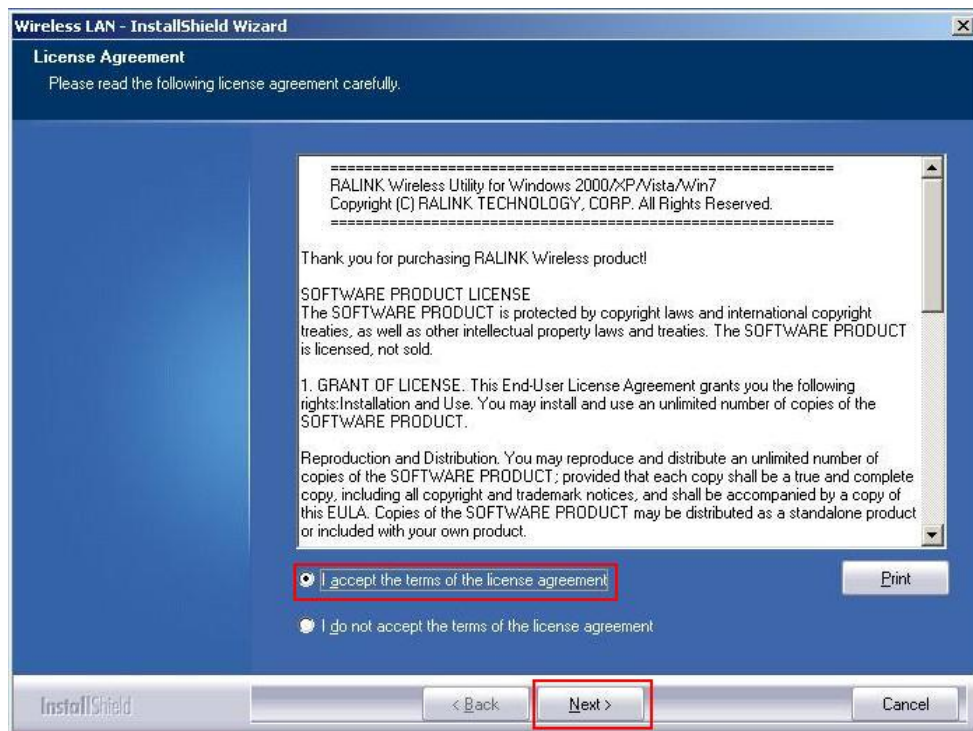


2. Insert your installation CD into CD drive of your computer. An installation page will pop up for you to install. Click **Utility Driver**.

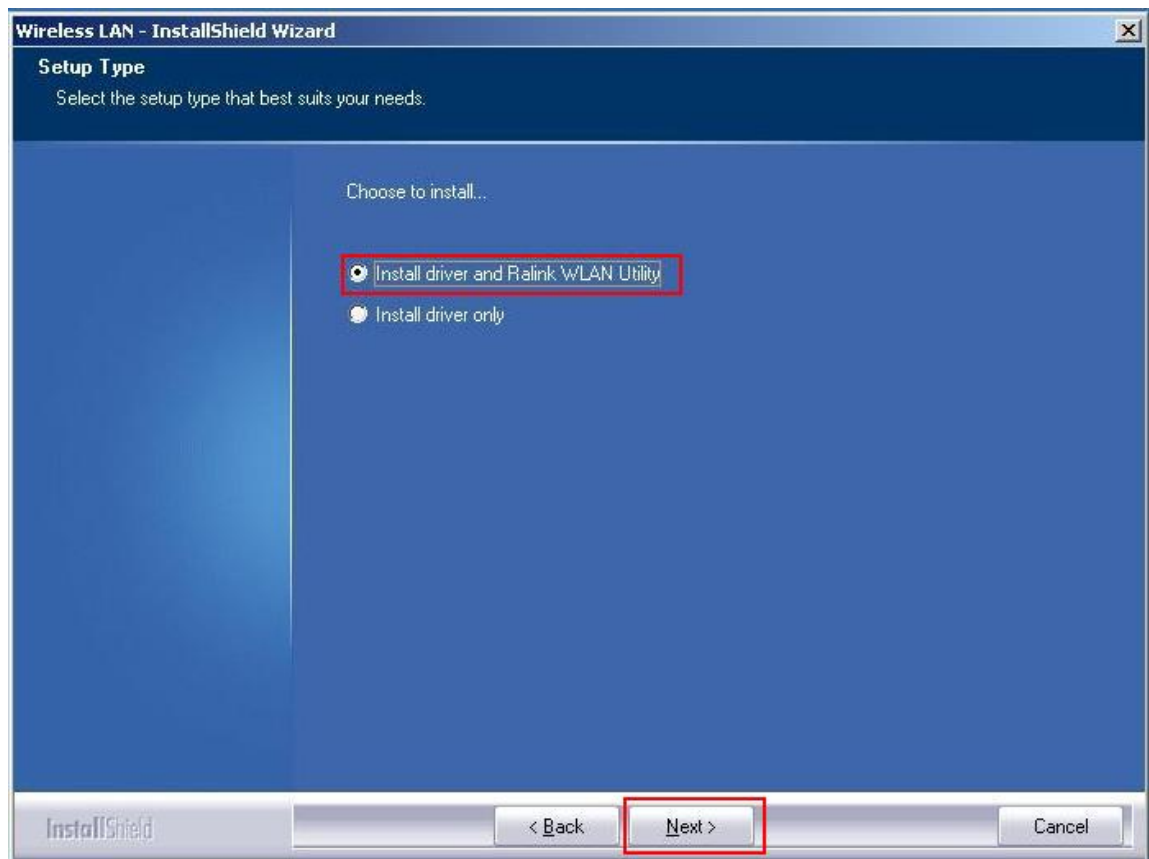
If the installation page does not appear, double click CD-ROM drive the installation CD was inserted to, or open the CD-ROM drive then click **Autorun.exe**



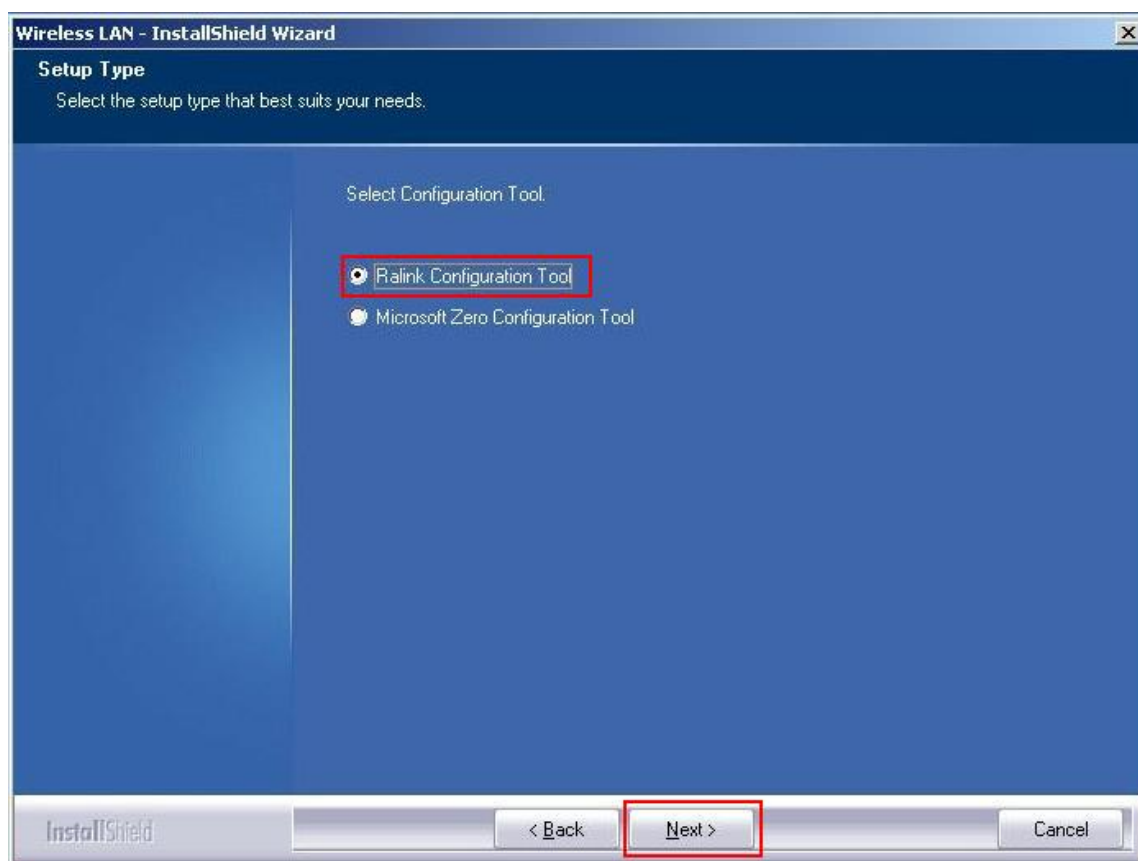
3. Click checkbox to accept the terms of license agreement, then click **Next**



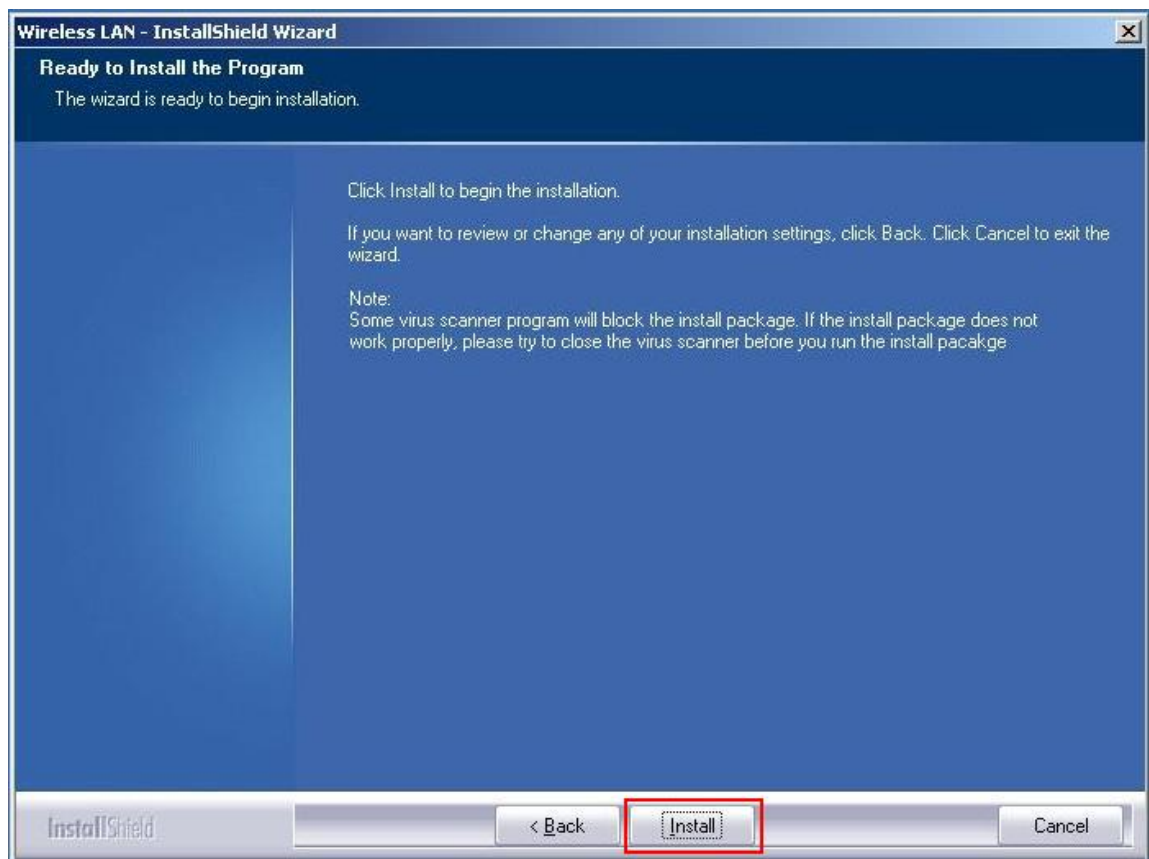
4. Select setup type for installing both driver and WLAN utility or install driver only.
Choose Install driver and WLAN utility, then click **Next**



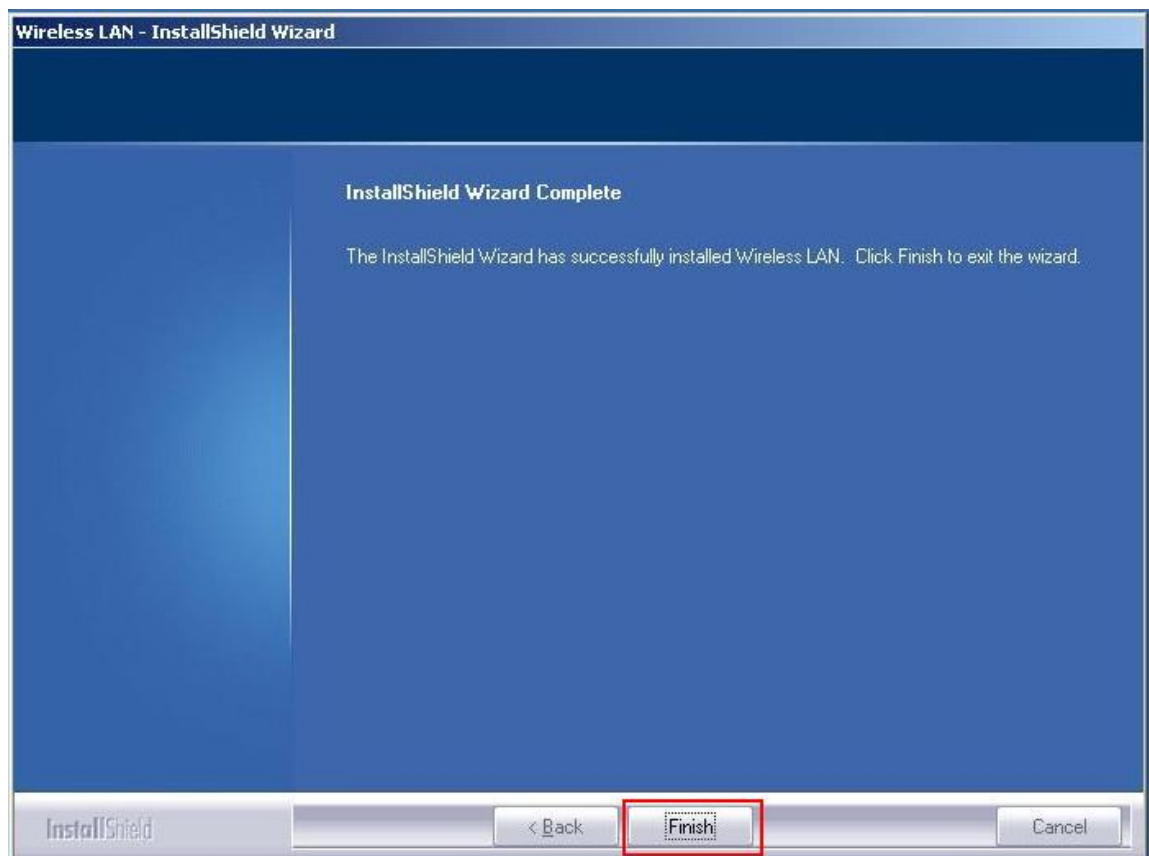
5. Select if you are going to configure your wireless network with WLAN utility or with Microsoft Zero Configuration tool. Choose WLAN Utility then click next.
Type of configuration tool can be changed after installing this software.
If you choose to install driver only on step 4, the installation will skip this step.
Windows Zero Configuration will be the default and only tool for managing your wireless network.



6. Click **Install** to begin the installation.



7. Click **Finish** to complete installation.




Making a Basic Network Connection

Select a configuration tool

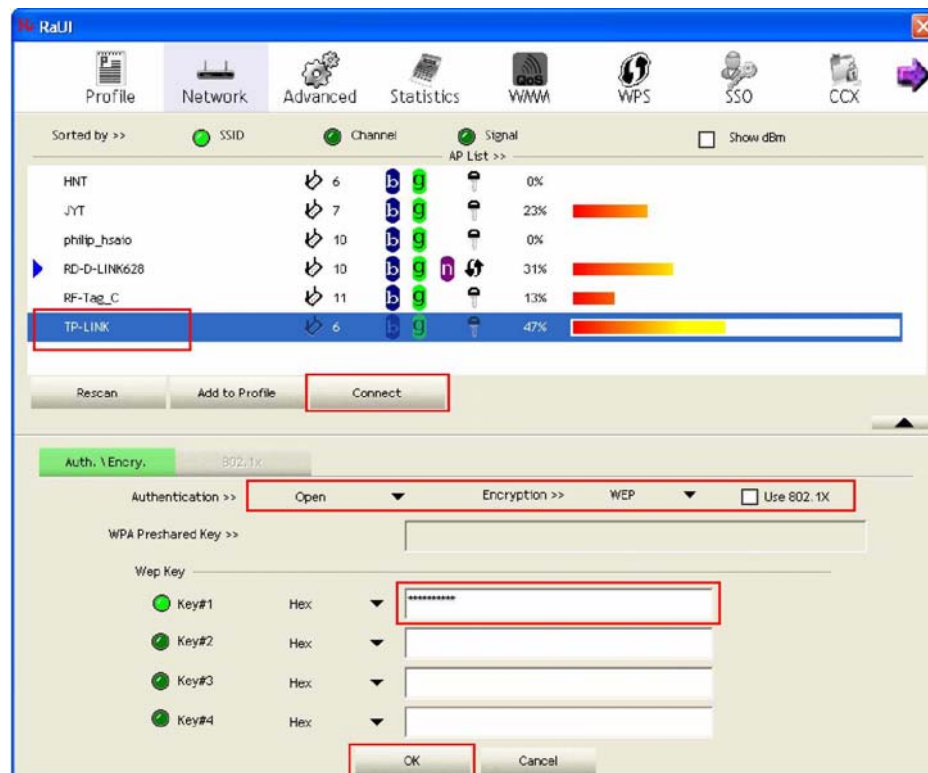
In the following instruction for making a network connection, we use WLAN utility to configure your wireless network settings that was installed as the steps in previous chapter.

To connect with 802.11 bgn Wireless LAN Utility


As default, the WLAN Utility is started automatically upon starting your computer and connects to the first available network. It is typically a network with the best signal strength among unsecured network. To change the connection to your own network, right click the  icon on system tray and select **Launch Config Utility**. The pop up WLAN configuration utility allows you to quickly connect the network you intend to.

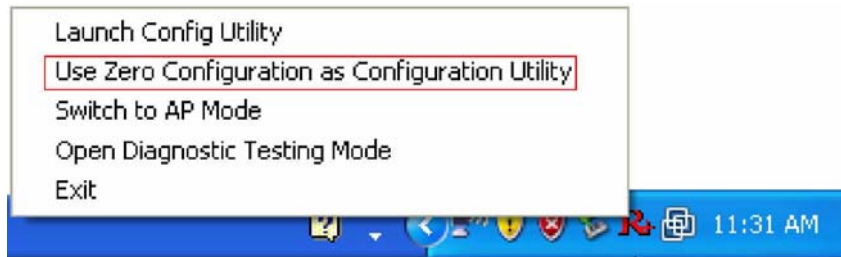



To join your target network, in Network tab, click on target network then **Connect**. Choose the security type of your network and type your security key, click on **OK** to complete a basic network connection.

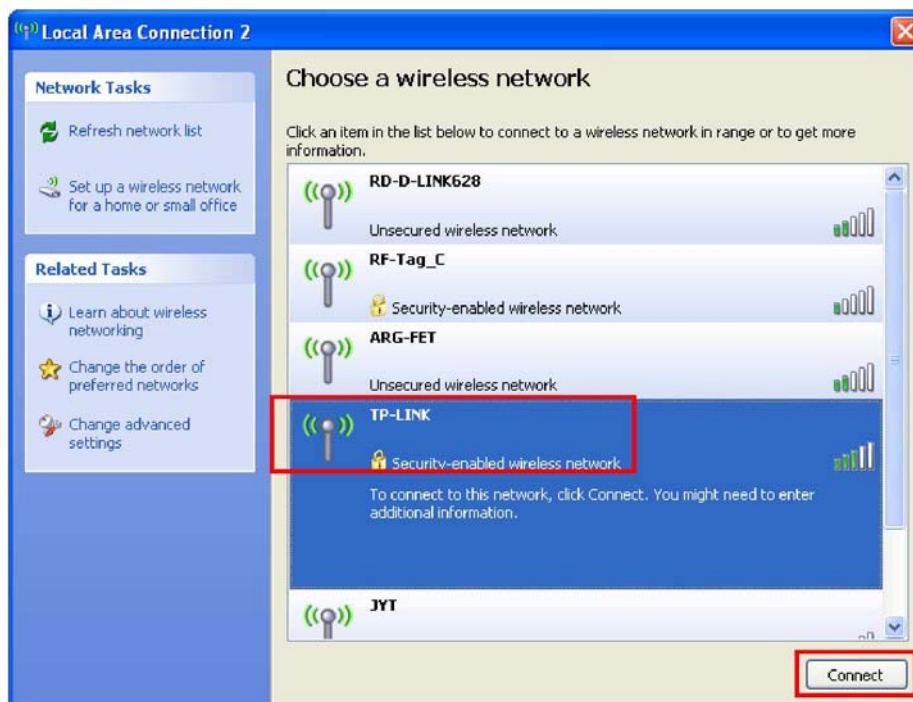


To connect with Microsoft Zero Configuration

To switch between the configuration tools, please right click on the icon  on system tray. Select **Use Zero Configuration as Configuration Utility**



, double click on  icon on system tray. The Zero Configuration pop up and show available wireless networks. Select your demanding network and click **Connect**



A pop up dialog allow you to setup your security key, then click **Connect** to join a network by Zero configuration.

