



Optical Mouse BM083

User's Guide



Please DO NOT direct the laser beam at anyone's eye.

CAUTION: To use this product properly, please read the user's guide before installation



Optical Mouse BM083

User's Guide



Please DO NOT direct the laser beam at anyone's eye.

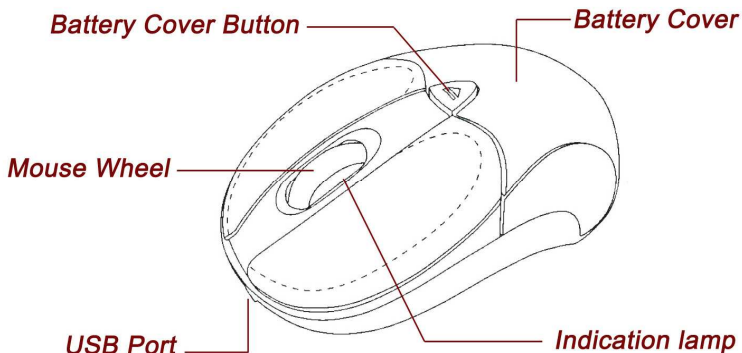
CAUTION: To use this product properly, please read the user's guide before installation

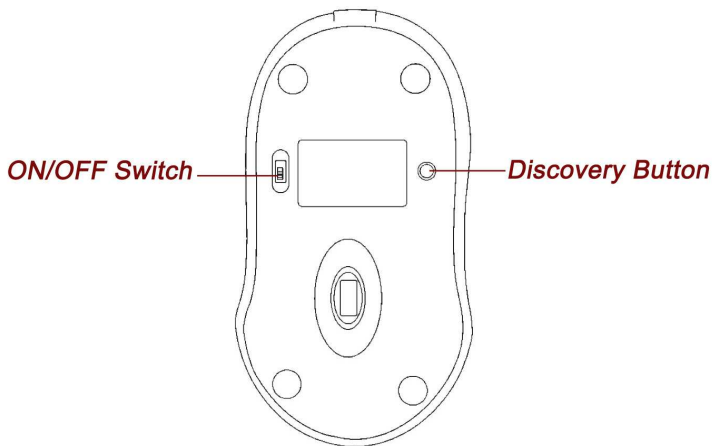
Welcome

Congratulations on selecting BM083 Bluetooth Optical Mouse.

The BM083 Bluetooth Optical Mouse works without a receiver for the ultimate in hassle-free mobility. It instantly connects to a PC/notebook enabled with Bluetooth wireless technology, providing up to 30 feet of cordless range. Power-saving sleep modes, a low-battery indicator light, and an on/off switch let you manage working power wisely. The stylish & comfortable design provides you with the best way to work with your notebook or PC.

Overview





Green LED ON: Charging

Blue LED Blinking: Pairing

Low in Battery

System Requirement

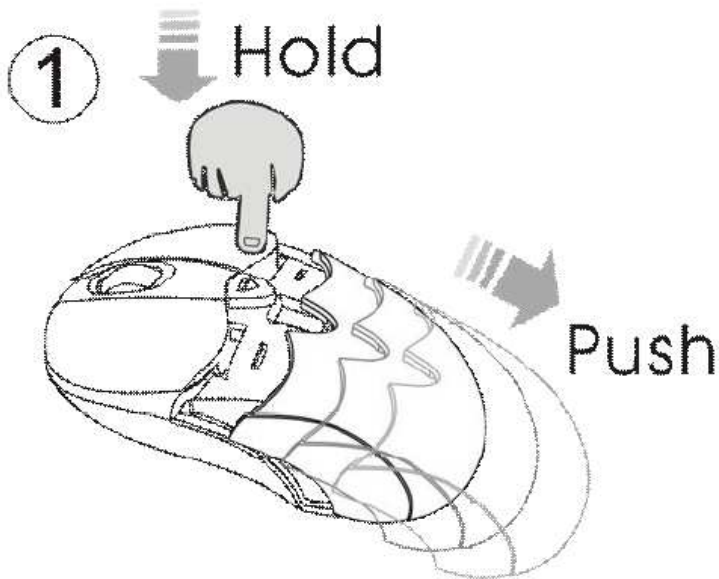
- IBM or PC Compatible/Mac PC enable with Bluetooth wireless technology.
- Windows system with Bluetooth software installed (Windows XP SP2 or above, Windows vista, Toshiba stack, Widcomm BTW, or IVT Bluecoil).
- Mac OS 10.2.8 or above with Bluetooth software installed.

Installation Guide

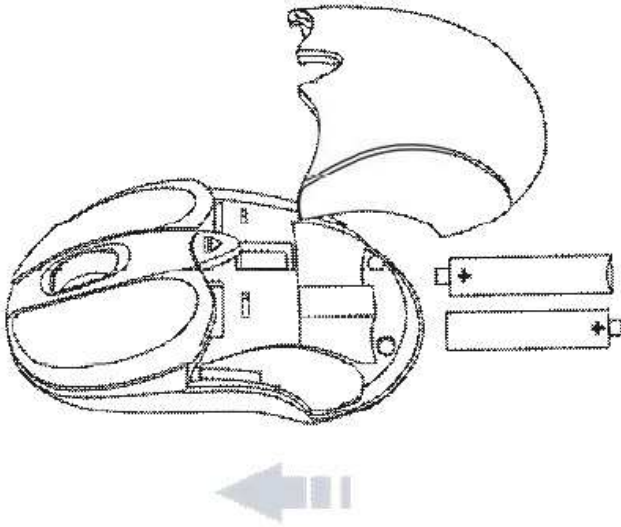
Step 1. Inserting the Batteries

The efficiency of the rechargeable battery is by the quality of actual enclosing battery. For better efficiency purpose, additional fine brand of the rechargeable battery is highly suggested.

- Press the button on the mouse and pull the battery cover backward
- Insert the batteries as shown inside the battery compartment.
- Replace the cover.



2



Charging the battery

When to charge

- 1 First-Time Use: Please charge at least 7 hours for the first time usage and charge at least 2 hours when battery runs low
- 2 Red LED Blinking: When the red LED starts blinking, it means the battery is nearly empty

How to charge

Plug the USB cable into your mouse and computer by USB port respectively and it starts charging. Mouse can work uninterruptedly during charging.

Step 2. Pairing your Bluetooth mouse with your computer

Before pairing your Bluetooth mouse with your computer, you

should read through the instructions that came with your Bluetooth hardware and software for detail how to pair a device to your specific Bluetooth configuration. Follow below steps to pair your Bluetooth mouse under Windows XP/SP2 system,., Widcomm BTW and IVT Bluecoleil

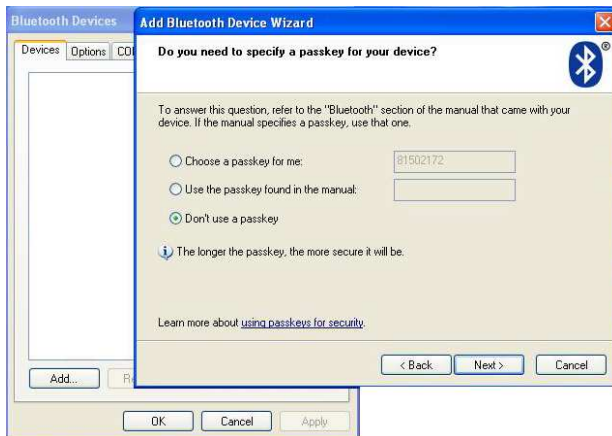
- Before you can install your BM083 Bluetooth optical mouse, please make sure you have done the Bluetooth dongle installation procedure.
- Turn on the switch on the bottom of the mouse, Press the “Discovery” button on the bottom of the mouse for 5-8 seconds. The mouse will be switched to the standby mode for pairing, the red light LED will flash., **Note: the “Discovery” button is only used for pairing operation**
- Next Pairing Steps
 - A. Use Bluetooth mouse on Windows XP SP2 Bluetooth stack steps
 - 1) . Click Start menu, click Control Panel and double click “Bluetooth Devices”., On the “Devices” tab, click “Add”.



- 2) . Select "My device is set up and ready to be found", when find the Bluetooth mouse, you can select it and click "next"

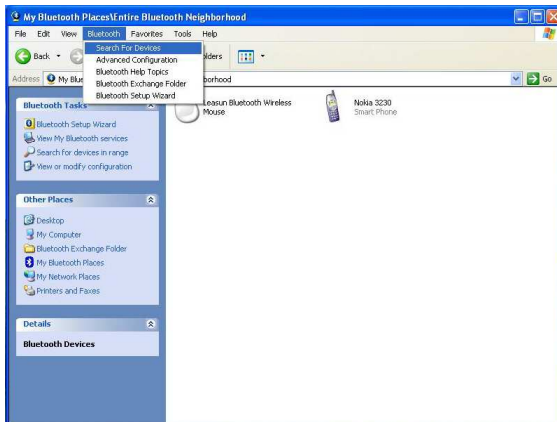


- 3) . Select "Don't use passkey", and click "next", operating system will install the bluetooth HID device automatically.

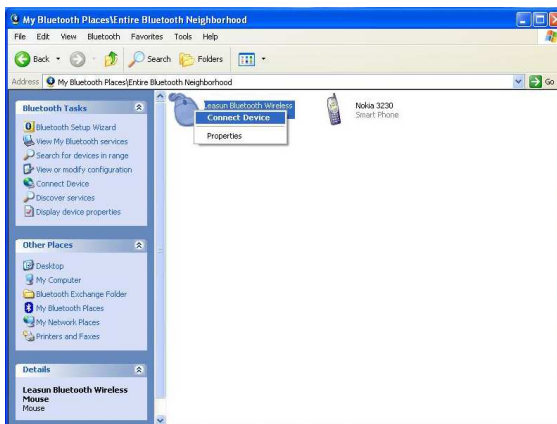


B. Use Bluetooth mouse on WIDCOMM Bluetooth stack steps

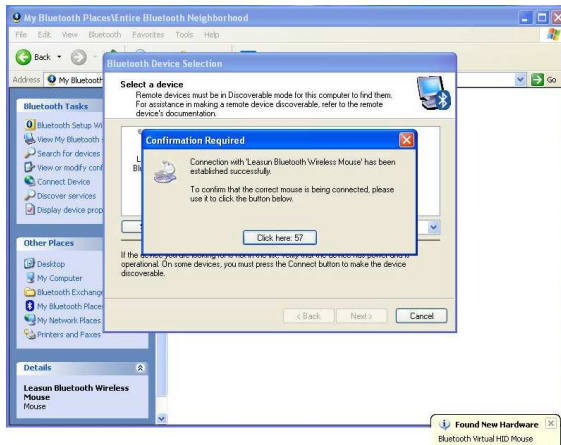
- 1) . Make sure the bluetooth function have been activated on the computer system, double click the BTW icon in toolbar, select “Bluetooth” and click "search for devices"



- 2) . Select the Bluetooth mouse icon, press right button and select “Connect Device”

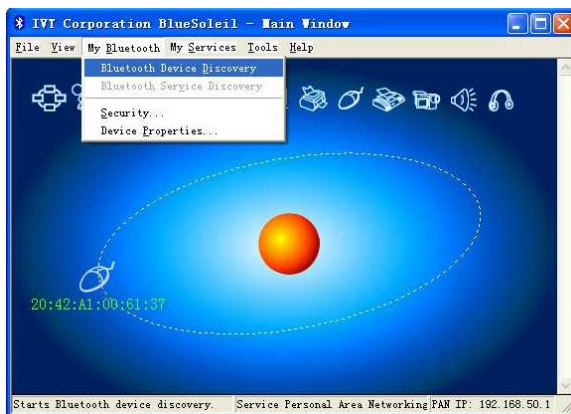


3) . Then come out the following window, after complete confirming, the operating system will install the bluetooth HID device automatically.

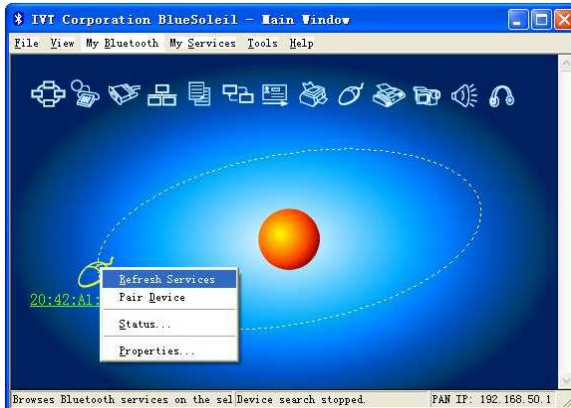


C. Use Bluetooth mouse on IVT Bluetooth stack steps

1) .Make sure the bluetooth function have been activated on the computer system, double click the BTW icon in toolbar, then click "Bluetooth Device Discovery" under "My Bluetooth" in toolbar.



- 2) . Select the found bluetooth mouse device, press the right button and select "Refresh Services"



- 3) . Then select the Bluetooth mouse icon, press right button to select "Connect" and click "Bluetooth Human Interface Device Service" the operating system will install the bluetooth HID device automatically



Product Specifications

- Bluetooth Specification: Version 2.0 Class 2
- Range of Frequency: 2.4GHz Spectrum
- Operating Voltage: 2.0 ~3.3Vdc (powered by AAA batteries)
- Moving Current: < 26mA
- Standby Current: 2.0~ 3.5mA
- Sleep Current: < 1.8 mA
- Switch at OFF < 10 uA
- Transmit Range: up to 10 meters
- Resolution: 1000cpi
- Storage Temperature: -40 ~ +125 degree
- Dimensions: 105mm(L)x56mm (W) x35mm (H)
- Weight: 70.5g+/-2g

Troubleshooting

If you are unable to connect your BM083 mouse to PC or can not use normally, please try the following:

- Ensure your bluetooth device of PC is properly starting up
- Ensure Bluetooth mouse has been paired to PC (If you have completed the connection before, but started up the connection button later, then you have to re-connect them)
- Ensure the Bluetooth mouse is within a 10 meters range of your PC
- Ensure your bluetooth device of PC have not be changed.(you have to re-connect if changed)
- If your PC bluetooth still connect other bluetooth device, make sure there is enough data for them.

- Reset the switch

If the above steps do not solve your problem, please replacing the batteries

Precaution

! The mouse cannot work on a glass surface.

! For consideration of saving battery power, it is strongly recommended to operate the mouse on a bright surface with fine texture to obtain lower power consumption, A very dark surface will cause higher power consumption.

! For a better transmission distance, avoid to use this device on a metal plate or desktop because a larger surface of iron, aluminum, Operating on a metal may cause the transmission distance shorter.

FCC STATEMENT

1. This device complies with Part 15 of the FCC Rules.

Operation is subject to the following two conditions:

(1) This device may not cause harmful interference.

(2) This device must accept any interference received, including interference that may cause undesired operation.

2. Changes or modifications not expressly approved by the party responsible for compliance could void the user's authority to operate the equipment.

NOTE: This equipment has been tested and found to comply with the limits for a

Class B digital device, pursuant to Part 15 of the FCC Rules. These limits are designed to provide reasonable protection against harmful interference in a residential installation.

This equipment generates uses and can radiate radio frequency energy and, if not installed and used in accordance with the instructions, may cause harmful interference to radio communications. However, there is no guarantee that interference will not occur in a particular installation.

If this equipment does cause harmful interference to radio or television reception, which can be determined by turning the equipment off and on, the user is encouraged to try to correct the interference by one or more of the following measures:

- Reorient or relocate the receiving antenna.

- Increase the separation between the equipment and receiver.

- Connect the equipment into an outlet on a circuit different from that to which the receiver is connected.

- Consult the dealer or an experienced radio/TV technician for help.

Dispose of batteries according to local regulations. Do not dispose as household waste