

AEPeL

PROFESSIONAL SOUND SYSTEM

www.aepel.co.kr

A/S contact : 445-13, Geumseung-ri, Tanhyeonm-yeon, Paju city, Gyeonggi Province,
We will consult its usage and A/S with our fast kindness and friendly smiles.

FC-730



FC-730 MANUAL

Please ensure to read the manual
and use it accurately and safely.

AEPeL

<http://www.aepel.co.kr>



FC-730

AEPEL Inc., the professional and special manufacturer of the Audio Products has commercialized to launch this product through over 2 years R&D.

We have achieved this product through a lot of trial and error same as another wireless devices products, and done our every efforts to return a great pleasure to our consumers.

This device of FC-730 has a small built-in amplifier to make the sound volume and rich, the noise to be minimized for the protection of the customers voice.

It is a sharp design and compact but rich volume for the easy carrying. It is the multi-purpose loudspeaker which can be used as compatible with wire and wireless.

- Rather than the analog to the digital circuit design, it is lightweight and excellently durable.
- With the sharp design, it could add the customers' satisfaction.
- With the design of the Digital modulation, the clarity of voice is clear and the influence of the signal mixture is very few.
- Using the Lithium-ion batteries used in cell phone use, its weight becomes minimized. We are proud of its fast charge time.
- With the Special speakers using the neohdium mageunetueu it can excellently deliver the vivid original voice.
- Installing the LCD window in the center of the product, customers can easily recognize status of the volume, battery and the wireless action.
- With the an external input terminal, it can be used to connect to a computer or MP3.
- Its Wireless performance to overcome the disadvantages of regular wired microphone can be used conveniently.
- With the design of the super power saving, it can be used 10 hours or more. Just with the once charge. (Using the normal operation)

PRODUCT COMPOSITION



Console



Wireless Microphone



Wireless microphone headset



Wired microphone



Neck hanger



Adapter



deluxe case bags



Using manual

SPECIFICATIONS

- Frequency response : 2402MHz~2480MHz
- Maximum Output : 20W
- External resistance : 4Ω
- Normal operation Temperature : -10 °C ~ 50°C
- Weight : 300g
- Size (mm) : 88 (W) × 128 (H) × 25 (D)

FC-730 NAME AND FUNCTION

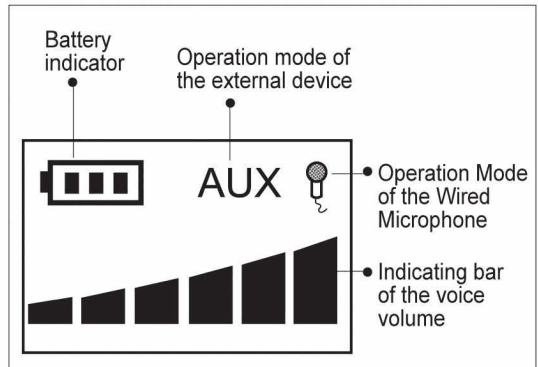


HOW TO USE THE CONSOLE

1. **Power Switch** : ON / OFF, please push for two seconds.
2. **Volume Adjustment** : Press the button to the desired volume.
3. **Charging socket** : It is used to charge the product, be sure to use the rechargeable adapter.

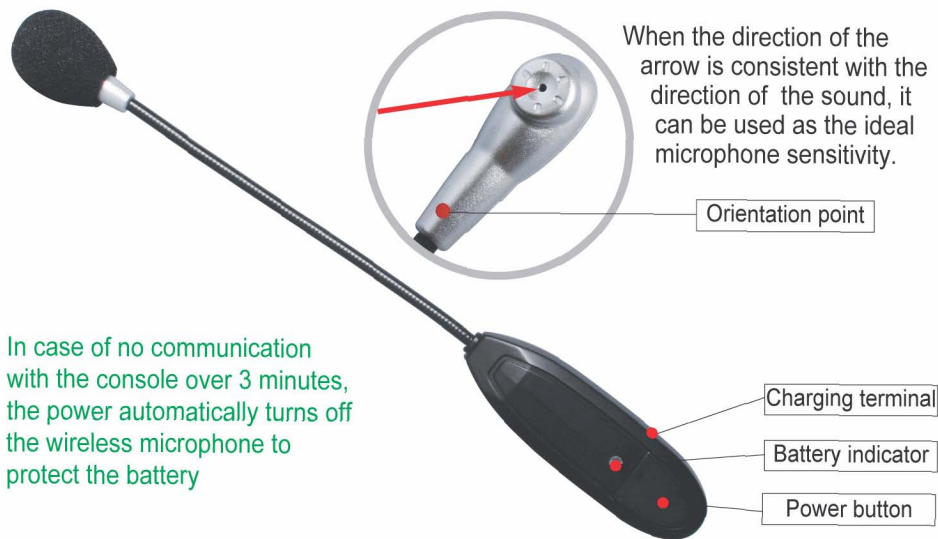
4. LCD Window

- The battery indicator :
It indicates the battery life.
If decreased to the number of bar one, please charge.
- The volume indicator :
As the volume bar increases,
the voice volumes become increased.
- Function indicator :
Using a wired microphone
Using a wireless microphone
Using an external device

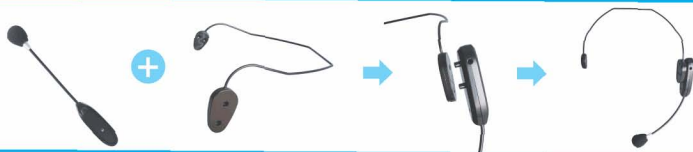


FC-730M

WIRELESS MICROPHONE



How to assemble a wireless microphone headset



HOW TO USE THE MICROPHONE

1. If the power switch on the body push slightly About two seconds, the LCD window will light on.
2. Using the wireless microphone, please push slightly the wireless microphone switch for about 2 seconds.
3. Using the wired microphone, please insert the wired microphone plug on the side of the console and set the switch of the console side to the wired use.
4. Connecting the External devices (MP3, CD), please set the switch of the console side to the external device.
5. Pushing the volume adjust switch of the console, please set the appropriate sound volume to fit the size.
6. If the red and green lamps flashes together on the display window in case of the battery exhausted, please recharge immediately.
7. Please turn off if not used.

CAUTIONS

1. If the scale bar number of the battery becomes one on the LCD window, please charge together with the wireless microphone,
2. When charging, please ensure to use the adapter included in this product.
3. If the direction of the microphone is wrong, it may cause the Howling, so please use the microphone as possible as close to your mouth.
4. If used on the table or deck, it could be dropped by the Vibration, please put in the case to use.
5. If products out of order, please do not disassemble the product by yourself, please ensure to contact us.

FC-730 How to use the wireless microphone for the best sound quality

1. Using the headset connection

- In case of wearing the headset as combining a wireless microphone and the heads, when the microphone is far about 1cm away from the lips to adjust the flexible part (wireless microphone stand), it can be uses as most rich sound volume.
- The red dot on the microphone is a orientation point.
- If the direction of the mouth is consistent with the direction of the orientation of the microphone, the rich volume could be performed.

Notice

The personal portable microphone of the commercial product in the current market is always near to the console which is working, so directional microphone is used to minimize the Howling. The wire, wireless microphone of the AEPEL PHONE is also a directional microphone.

The wireless microphone of the AEPEL PHONE has manufactured, assuming a headset used. The orientation of the microphone is little bit different from your normally using microphone. Therefore, if you use it as a regular microphone, the sound may be reduced significantly, because the passing angle of the sound is in-conformity.

2. How to check the wireless microphones operating state

- Green light : Operating normally connected to the console and a wireless display (green, blinking)
- Red light : Not connected to the console and wireless in this case, the power is turned off automatically approximately 3 minutes later.
- Simultaneous flashing green, red light : the battery requires charging due to the lack of its capacity

How to check charge Tips for charging in the power on

Please charge in the “Power On” status!!

1. Console

The charging indicator of the LCD window will blink if plugged to the adapter. Charging is completed, the power turns off automatically.

2. Wireless Microphone

If the Wireless microphone is normal, the green light flickers.

If connecting to the adapter jack to charge, the red light is on, if the charging is completed, the red light is changed to green, and then the power automatically turns off after about 3 minutes.

Understanding of the battery protection device

Wireless microphone (Automatic POWER OFF function)

The wireless microphone uses the small battery to easily wear, therefore its using time becomes shorter.

If the wireless connection is not used over 3 minutes to prevent unnecessary battery consumption, it has a function to power off automatically.

In this case, you may use again after power on.

Product Warranty

1. This product is manufactured through the severe quality control and inspection process.
2. we warranty that not any defects of the manufacturing or used materials occur within 1 year from the date that you purchased. In the defects depending on the status of the material should not be any warrant is defective.
3. In case of the trouble is occurred by the normally usage within the warranty period, the free repairing will be served.
4. In case of the trouble is within the paid services of guarantee sheet even though the Warranty period, the repair and replacement will be served with the separate fee.
5. If the Products have trouble, please contact us at Head Office or to purchasing place. 6. in case of the range of the users liability and the product warranty are not written in the product warranty, the protection laws and the fair trade law are applied.

Buyers Responsibilities

1. The registration and issues of the Product warranty is to the our homepage.
2. Buyers shall exactly write his requirements in the product warranty so that the product warranty may be effective.
3. If the product of even no defects are backed within 7 days after receipt of the product, the return shipping / return costs are paid by the buyer.

Paid services

1. If Online product warranty is not registrated, the guarantee period could not be confirmed
2. Troubles due to careless handling of the usage
3. Trouble caused by user's internally modified or repaired.
4. Trouble of the Natural disasters (fire, earthquake, flood, etc.)
5. Products of which Product warranty period was passed
6. To buy the Consuming parts (microphone, adapter, and other)

Authentication information

1. Applicant Company Name : AEPEL INC
2. Product NAME : wireless devices for the wireless data communication systems
3. Model : FC-730
4. Manufacturing year : 2008. 7
5. Manufacturer / Manufacturer Country : AEPEL INC / Korea

Information phrase

This wireless devices has possibility to make frequency confusion, we can not do the services related to the human safety.

Wireless Specifications (Wireless microphone)

1. Use frequency : 2402MHz ~ 2480MHz
2. number of channel : 79ea
3. Aerial power : 1mW or less
4. Modulation : GFSK
5. Communication method : 1:1 method

FCC Information to User

This equipment has been tested and found to comply with the limits for a Class B digital device, pursuant to Part 15 of the FCC Rules.

These limits are designed to provide reasonable protection against harmful interference in a residential installation. This equipment generates, uses and can radiate radio frequency energy and, if not installed and used in accordance with the instructions, may cause harmful interference to radio communications.

However, there is no guarantee that interference will not occur in a particular installation. If this equipment does cause harmful interference to radio or television reception, which can be determined by turning the equipment off and on, the user is encouraged to try to correct the interference by one of the following measures :

- Reorient or relocate the receiving antenna.
- Increase the separation between the equipment and receiver.
- Connect the equipment into an outlet on a circuit different from that to which the receiver is connected.
- Consult the dealer or an experienced radio / TV technician for help.

Caution

Modifications not expressly approved by the party responsible for compliance could void the user's authority to operate the equipment.

FCC Compliance Information

This device complies with Part 15 of the FCC Rules.

Operation is subject to the following two conditions :

(1) This device may not cause harmful interference, and (2) this device must accept any interference received, including interference that may cause undesired operation

IMPORTANT NOTE

FCC RF Radiation Exposure Statement

This equipment complies with FCC RF radiation exposure limits set forth for an uncontrolled environment. This equipment should be installed and operated with a minimum distance of 20 centimeters between the radiator and your body. This transmitter must not be co-located or operating in conjunction with any other antenna or transmitter.

IMPORTANT Safety Instruction

CAUTION

To reduce the risk of electric shock, do not remove the top cover (or the rear section). No user serviceable parts inside, refer servicing to qualified personnel.



This symbol, wherever it appears, alerts you to the presence of uninsulated dangerous voltage inside the enclosure-voltage that may be sufficient to constitute a risk of shock.



This symbol, wherever it appears, alerts you to the important operating and maintenance instructions in the accompanying literature. Please read the manual.

1. Read these instructions.
2. Keep these instructions.
3. Heed all warnings.
4. Follow all instructions.
5. Do not use this equipment near water.
6. Do not using near any heat sources such as radiators, heat resisters, stove, or other equipment that produce heat.

CAUTION
RISK OF EXPLOSION IF BATTERY IS REPLACED
BY AN INCORRECT TYPE.
DISPOSE OF USED BATTERIES ACCORDING
TO THE INSTRUCTIONS