

# TEST REPORT

**Reference No.**..... : WTS18S05111924-1W  
**FCC ID** ..... : X2F-WX-05  
**Applicant**..... : GaoYi Tech Limited  
**Address**..... : 5th Floor, Building F2, Hua Feng Industrial Zone, HangCheng Road, Xi Xiang Town, Bao An District, Shenzhen, China  
**Manufacturer** ..... : GaoYi Tech Limited  
**Address**..... : 5th Floor, Building F2, Hua Feng Industrial Zone, HangCheng Road, Xi Xiang Town, Bao An District, Shenzhen, China  
**Product**..... : Wireless Car Holder Charger  
**Model(s)** ..... : WX-05  
**Standards**..... : FCC CFR47 Part 15.209: 2017  
**Date of Receipt sample** .... : 2018-05-17  
**Date of Test** ..... : 2018-05-18 to 2018-06-04  
**Date of Issue**..... : 2018-06-05  
**Test Result**..... : **Pass**

**Remarks:**

The results shown in this test report refer only to the sample(s) tested, this test report cannot be reproduced, except in full, without prior written permission of the company. The report would be invalid without specific stamp of test institute and the signatures of compiler and approver.

**Prepared By:**

**Waltek Services (Shenzhen) Co., Ltd.**

Address: 1/F., Fukangtai Building, West Baima Road, Songgang Street, Baoan District, Shenzhen, Guangdong, China

**Test Site/Test Location:**

**Waltek Services (Shenzhen) Co., Ltd.**

Address: 1/F., Fukangtai Building, West Baima Road, Songgang Street, Baoan District, Shenzhen, Guangdong, China

Tel :+86-755-83551033

Fax:+86-755-83552400

Compiled by:

*Robin.Zhou*

Robin Zhou / Project Engineer

Approved by:



*Philo Zhong*

Philo Zhong / Manager

# 1 Laboratories Introduction

**Waltek Services (Shenzhen) Co., Ltd** is a professional third-party testing and certification laboratory with multi-year product testing and certification experience, established strictly in accordance with ISO/IEC 17025 requirements, and accredited by ILAC (International Laboratory Accreditation Cooperation) member. A2LA (American Association for Laboratory Accreditation) of USA, Meanwhile, Waltek has got recognition as registration and accreditation laboratory from EMSD (Electrical and Mechanical Services Department), and American Energy star, FCC(The Federal Communications Commission), CEC(California energy efficiency), IC(Industry Canada). It's the strategic partner and data recognition laboratory of international authoritative organizations, such as Intertek(ETL-SEMKO), TÜV Rheinland, TÜV SÜD, etc.



Waltek Services (Shenzhen) Co., Ltd is one of the largest and the most comprehensive third party testing laboratory in China. Our test capability covered four large fields: safety test. Electro Magnetic Compatibility (EMC), and energy performance, wireless radio. As a professional, comprehensive, justice international test organization, we still keep the scientific and rigorous work attitude to help each client satisfy the international standards and assist their product enter into globe market smoothly.

## 1.1 Test Facility

Waltek Services (Shenzhen) Co., Ltd.

### A. Accreditations for Conformity Assessment (International)

Country/Region	Accreditation Body	Scope	Note
USA	<b>A2LA</b> <b>(Certificate No.: 4243.01)</b>	FCC ID \ DOC \ VOC	1
Canada		IC ID \ VOC	2
Japan		MIC-T \ MIC-R	-
Europe		EMCD \ RED	-
Taiwan		NCC	-
Hong Kong		OFCA	-
Australia		RCM	-
India		<b>International Services</b>	WPC
Thailand	NTC		-
Singapore	IDA		-
Note:			
1. FCC Designation No.: CN1201. Test Firm Registration No.: 523476.			
2. IC Canada Registration No.: 7760A			

### B. TCBs and Notify Bodies Recognized Testing Laboratory.

Recognized Testing Laboratory of ...	Notify body number
TUV Rheinland	Optional.
Intertek	
TUV SUD	
SGS	
Phoenix Testlab GmbH	0700
Element Materials Technology Warwick Ltd	0891
Timco Engineering, Inc.	1177
Eurofins Product Service GmbH	0681

## 2 Contents

	Page
<b>COVER PAGE.....</b>	<b>1</b>
<b>1 LABORATORIES INTRODUCTION .....</b>	<b>2</b>
1.1 TEST FACILITY .....	3
<b>2 CONTENTS .....</b>	<b>4</b>
<b>3 REVISION HISTORY .....</b>	<b>5</b>
<b>4 GENERAL INFORMATION.....</b>	<b>6</b>
4.1 GENERAL DESCRIPTION OF E.U.T.....	6
4.2 DETAILS OF E.U.T.....	6
4.3 TEST MODE .....	6
<b>5 EQUIPMENT USED DURING TEST .....</b>	<b>7</b>
5.1 EQUIPMENT LIST.....	7
5.2 DESCRIPTION OF SUPPORT UNITS.....	7
5.3 MEASUREMENT UNCERTAINTY.....	8
5.4 SUBCONTRACTED.....	8
<b>6 TEST SUMMARY .....</b>	<b>9</b>
<b>7 RADIATED SPURIOUS EMISSIONS.....</b>	<b>10</b>
7.1 EUT OPERATION.....	10
7.2 TEST SETUP .....	11
7.3 SPECTRUM ANALYZER SETUP .....	12
7.4 TEST PROCEDURE.....	12
7.5 CORRECTED AMPLITUDE & MARGIN CALCULATION .....	12
7.6 SUMMARY OF TEST RESULTS .....	13
<b>8 BANDWIDTH MEASUREMENT.....</b>	<b>14</b>
8.1 TEST PROCEDURE.....	14
8.2 TEST SETUP .....	14
8.3 TEST RESULT .....	14
<b>9 ANTENNA REQUIREMENT .....</b>	<b>16</b>
<b>10 FCC ID: X2F-WX-05 RF EXPOSURE REPORT.....</b>	<b>17</b>
<b>11 PHOTOGRAPHS – MODEL WX-05 TEST SETUP PHOTOS.....</b>	<b>17</b>
<b>12 PHOTOGRAPHS - CONSTRUCTIONAL DETAILS .....</b>	<b>17</b>
12.1 MODEL WX-05 – EXTERNAL PHOTOS .....	17
12.2 MODEL WX-05 – INTERNAL PHOTOS .....	17

### 3 Revision History

Test report No.	Date of Receipt sample	Date of Test	Date of Issue	Purpose	Comment	Approved
WTS18S05111924-1W	2018-05-17	2018-05-18 to 2018-06-04	2018-06-05	original	N/A	Valid

## 4 General Information

### 4.1 General Description of E.U.T.

Product:	Wireless Car Holder Charger
Model(s):	WX-05

### 4.2 Details of E.U.T.

Operation Frequency:	112 kHz to 205 kHz
Type of Modulation:	ASK
Antenna installation:	Coil Antenna
Antenna Gain:	N/A
Ratings:	Input: DC 5V 2A, 9V 1.7A Max Output: DC 5V 1A, 9V 1.1A

### 4.3 Test Mode

All test mode(s) and condition(s) mentioned were considered and evaluated respectively by performing full tests, the worst data were recorded and reported.

Test mode	Test channel
Transmitting	173.43kHz

## 5 Equipment Used during Test

### 5.1 Equipment List

3m Semi-anechoic Chamber for Radiation Emissions						
Item	Equipment	Manufacturer	Model No.	Serial No	Last Calibration Date	Calibration Due Date
1	Test Receiver	R&S	ESCI	101296	2018-04-29	2019-04-28
2	Trilog Broadband Antenna	SCHWARZBECK	VULB9160	9160-3325	2018-04-29	2019-04-28
3	Active Loop Antenna	Com-power	AL-130R	10160007	2018-04-17	2019-04-16
4	Amplifier	ANRITSU	MH648A	M43381	2018-04-29	2019-04-28
5	Cable	HUBER+SUHNER	CBL2	525178	2018-04-29	2019-04-28
6	Coaxial Cable (below 1GHz)	Top	TYPE16 (13M)	-	2017-09-12	2018-09-11
RF Conducted Testing						
Item	Equipment	Manufacturer	Model No.	Serial No.	Last Calibration Date	Calibration Due Date
1.	Spectrum Analyzer	R&S	FSL6	100959	2017-09-12	2018-09-11
2	Coaxial Cable	Top	10Hz-30GHz	-	2017-09-12	2018-09-11
3	Antenna Connector*	Realacc	45RSm	-	2017-09-12	2018-09-11
4	DC Block	Gwave	GDCB-3G-N-SMA	140307001	2017-09-12	2018-09-11
“*”: The temporary antenna connector is soldered on the PCB board in order to perform conducted tests and this temporary antenna connector is listed in the equipment list.						

### 5.2 Description of Support Units

Equipment	Manufacturer	Model No.
Smart Phone	APPLE	A1863(IPhone 8)

### 5.3 Measurement Uncertainty

Parameter	Uncertainty
Radio Frequency	$\pm 1 \times 10^{-6}$
RF Power	$\pm 1.0$ dB
RF Power Density	$\pm 2.2$ dB
Radiated Spurious Emissions test	$\pm 5.03$ dB (30M~1000MHz)
Confidence interval: 95%. Confidence factor:k=2	

### 5.4 Subcontracted

Whether parts of tests for the product have been subcontracted to other labs:

☐ Yes ☒ No

If Yes, list the related test items and lab information:

Test Lab: N/A

Lab address: N/A

Test items: N/A



## 6 Test Summary

Test Items	Test Requirement	Result
Conducted Emissions	15.207	N/A*
Radiated Spurious Emissions	15.205(a) 15.209	Pass
Bandwidth Measurement	15.205(a) 15.215(c)	Pass
Antenna Requirement	15.203	Pass
Note: Pass =Compliance; NC=Not Compliance; NT=Not Tested; N/A=Not Applicable. “*”: The EUT is only powered by battery, no need to evaluate AC Power Conducted Emission.		

## 7 Radiated Spurious Emissions

Test Requirement: FCC Part15 Paragraph 15.209, 15.205(a)

Test Method: ANSI C63.10:2013

Test Result: PASS

Measurement Distance: 3m

Limit:

FCC Part15 Paragraph 15.209

Frequency (MHz)	Field Strength		Field Strength Limit at 3m Measurement Dist	
	uV/m	Distance (m)	uV/m	dBuV/m
0.009 ~ 0.490	$2400/F(\text{kHz})$	300	$10000 * 2400/F(\text{kHz})$	$20\log^{(2400/F(\text{kHz}))} + 80$
0.490 ~ 1.705	$24000/F(\text{kHz})$	30	$100 * 24000/F(\text{kHz})$	$20\log^{(24000/F(\text{kHz}))} + 40$
1.705 ~ 30	30	30	$100 * 30$	$20\log^{(30)} + 40$
30 ~ 88	100	3	100	$20\log^{(100)}$
88 ~ 216	150	3	150	$20\log^{(150)}$
216 ~ 960	200	3	200	$20\log^{(200)}$
Above 960	500	3	500	$20\log^{(500)}$

### 7.1 EUT Operation

Operating Environment :

Temperature: 23.5 °C

Humidity: 51.1 % RH

Atmospheric Pressure: 101.2kPa

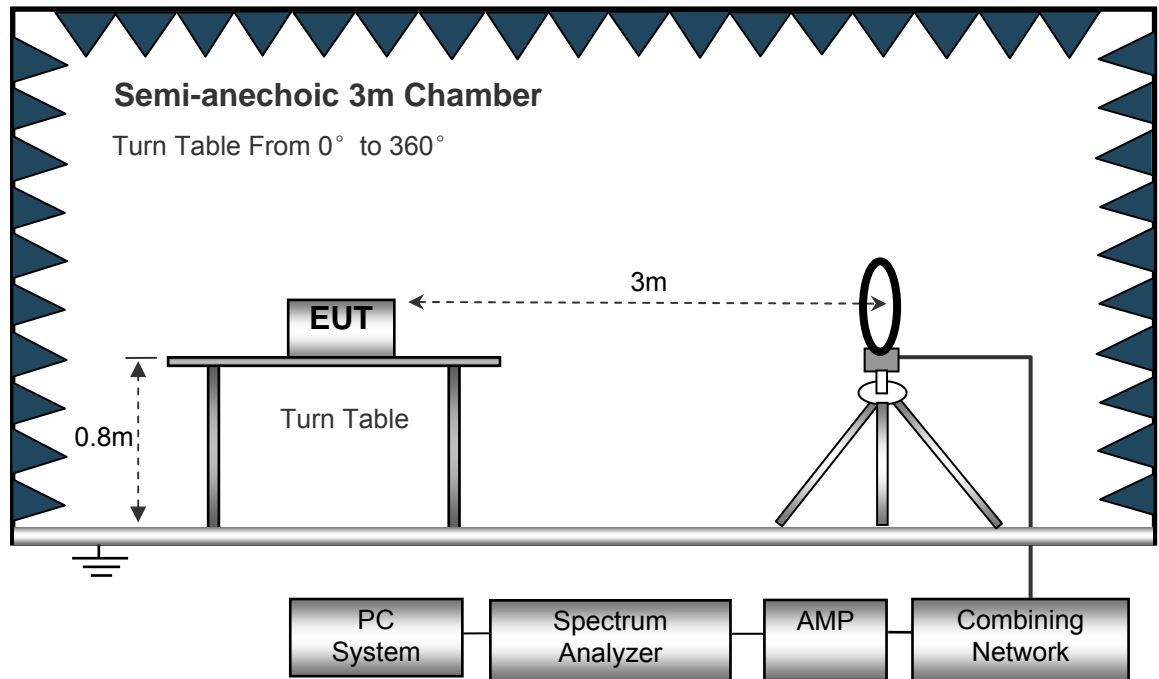
EUT Operation :

The test was performed in Transmitting mode, the test data were shown in the report.

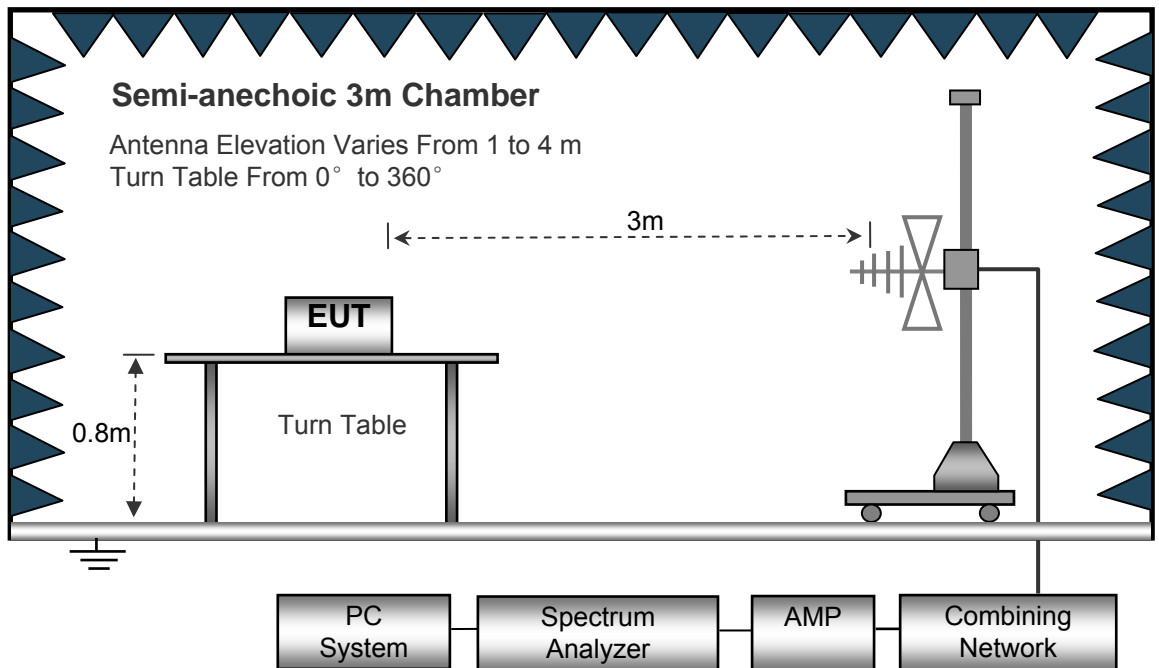
## 7.2 Test Setup

The radiated emission tests were performed in the 3m Semi- Anechoic Chamber test site, using the setup accordance with the ANSI C63.10

The test setup for emission measurement below 30MHz.



The test setup for emission measurement from 30 MHz to 1 GHz.



### 7.3 Spectrum Analyzer Setup

Below 30MHz

Sweep Speed .....Auto  
 IF Bandwidth..... 10kHz  
 Video Bandwidth..... 10kHz  
 Resolution Bandwidth..... 10kHz

30MHz ~ 1GHz

Sweep Speed .....Auto  
 Detector .....PK  
 Resolution Bandwidth..... 100kHz  
 Video Bandwidth..... 300kHz

### 7.4 Test Procedure

1. The EUT is placed on a turntable, which is 0.8m above ground plane for below 1GHz and 1.5m for above 1GHz.
2. The turntable shall be rotated for 360 degrees to determine the position of maximum emission level.
3. EUT is set 3m away from the receiving antenna, which is moved from 1m to 4m to find out the maximum emissions. The spectrum was investigated from the lowest radio frequency signal generated in the device, without going below 9 kHz, up to the tenth harmonic of the highest fundamental frequency or to 40 GHz, whichever is lower.
4. Maximum procedure was performed on the six highest emissions to ensure EUT compliance.
5. And also, each emission was to be maximized by changing the polarization of receiving antenna both horizontal and vertical.
6. Repeat above procedures until the measurements for all frequencies are complete.
7. The radiation measurements are tested under 3-axes(X,Y,Z) position(X denotes lying on the table, Y denotes side stand and Z denotes vertical stand), After pre-test, It was found that the worse radiation emission was get at the Z position. So the data shown was the Z position only.

### 7.5 Corrected Amplitude & Margin Calculation

The Corrected Amplitude is calculated by adding the Antenna Factor and Cable Factor, and subtracting the Amplifier Gain from the Amplitude reading. The basic equation is as follows:

$$\text{Corr. Ampl.} = \text{Indicated Reading} + \text{Antenna Factor} + \text{Cable Factor} - \text{Amplifier Gain}$$

The “Margin” column of the following data tables indicates the degree of compliance with the applicable limit. For example, a margin of -7dB means the emission is 7dB below the maximum limit for Class B. The equation for margin calculation is as follows:

$$\text{Margin} = \text{Corr. Ampl.} - \text{Limit}$$

## 7.6 Summary of Test Results

### Test Frequency: 9 kHz ~ 30 MHz

Frequency	Receiver Reading (AV)	Turn table Angle	RX Antenna		Corrected Factor	Corrected Amplitude (AV)	FCC Part 15.209	
			Height	Polar			Limit	Margin
(kHz)	(dBμV @3m)	Degree	(m)	(H/V)	(dB/m)	(dBμV @3m)	(dBμV/m) @3m	(dB)
173.43	38.79	90	1.1	H	18.35	57.14	102.82	-45.68
173.43	49.04	240	1.2	V	20.41	69.45	102.82	-33.37

### Test Frequency: 30 MHz ~ 1 GHz

Frequency	Receiver Reading	Detector	Turn table Angle	RX Antenna		Corrected Factor	Corrected Amplitude	FCC Part 15.209	
				Height	Polar			Limit	Margin
(MHz)	(dBμV)	QP	Degree	(m)	(H/V)	(dB)	(dBμV/m)	(dBμV/m)	(dB)
52.58	43.61	QP	192	1.9	H	-16.36	27.25	40.00	-12.75
52.58	50.53	QP	295	1.8	V	-16.36	34.17	40.00	-5.83
116.13	37.07	QP	85	1.9	H	-17.55	19.52	43.50	-23.98
116.13	41.29	QP	189	1.4	V	-17.55	23.74	43.50	-19.76
679.96	32.41	QP	248	1.9	H	-6.65	25.76	46.00	-20.24
679.96	36.50	QP	164	1.6	V	-6.65	29.85	46.00	-16.15

Note: Correct factor = Cable loss + Antenna factor

## 8 Bandwidth Measurement

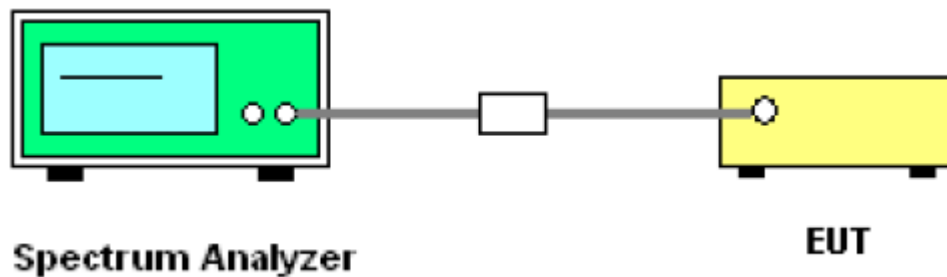
Test Requirement: FCC Part15.215(C), Part15.205 (a)

Test Method: ANSI C63.10: 2013

### 8.1 Test Procedure

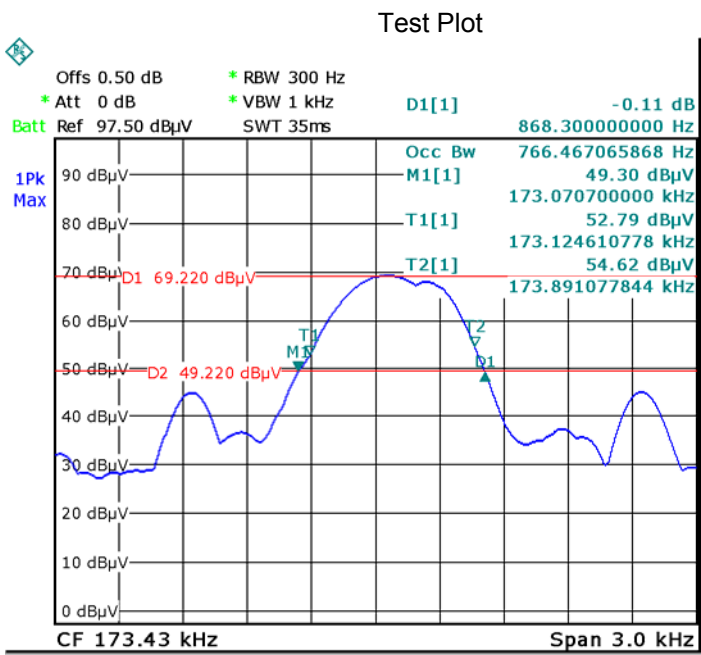
1. The transmitter output (antenna port) was connected to the spectrum analyzer in peak mode.
2. Bandwidth Measure the resolution bandwidth of 300 Hz and the video bandwidth of 1 kHz were used.
3. Measured the spectrum width with power higher than 20dB below carrier and 99% Bandwidth.

### 8.2 Test Setup



### 8.3 Test Result

Frequency(kHz)	20dB Bandwidth Emission(kHz)	99% Bandwidth Emission(kHz)
173.43	0.868	0.766



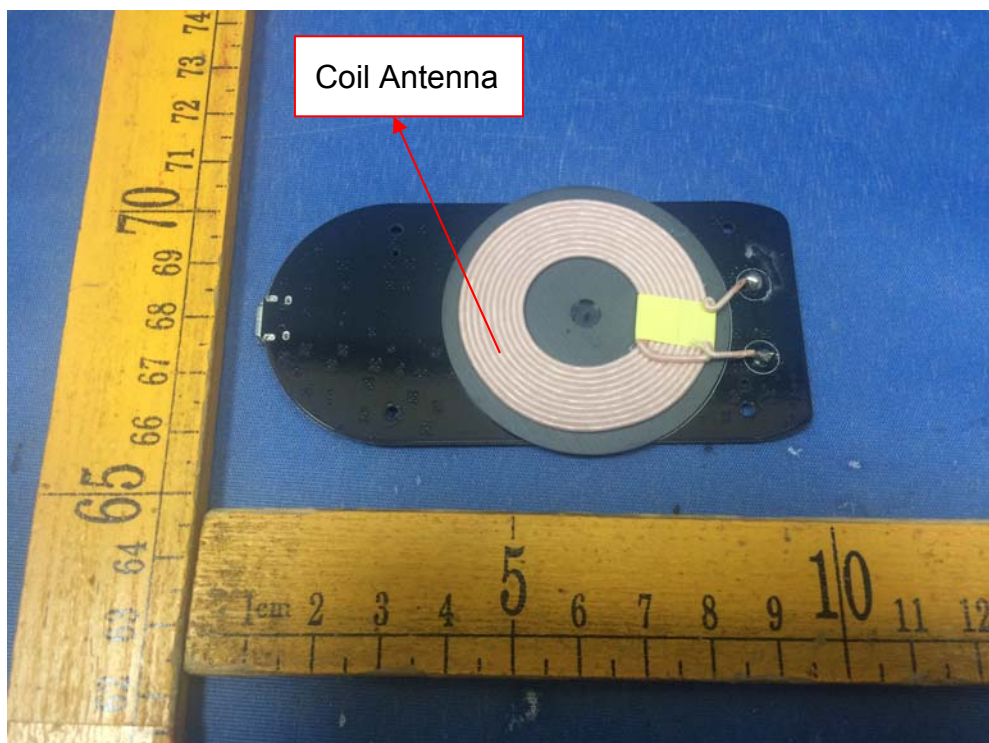
## 9 Antenna Requirement

An intentional radiator shall be designed to ensure that no antenna other than that furnished by the responsible party shall be used with the device. The use of a permanently attached antenna or of an antenna that uses a unique coupling to the intentional radiator shall be considered sufficient to comply with the provisions of this section. The manufacturer may design the unit so that a broken antenna can be replaced by the user, but the use of a standard antenna jack or electrical connector is prohibited. This requirement does not apply to carrier current devices or to devices operated under the provisions of §15.211, §15.213, §15.217, §15.219, or §15.221. Further, this requirement does not apply to intentional radiators that must be professionally installed, such as perimeter protection systems and some field disturbance sensors, or to other intentional radiators which, in accordance with §15.31(d), must be measured at the installation site. However, the installer shall be responsible for ensuring that the proper antenna is employed so that the limits in this part are not exceeded.

For intentional device, according to FCC 15 CFR Section 15.203, an intentional radiator shall be designed to ensure that no antenna other than that furnished by the responsible party shall be used with the device.

Result:

The EUT has one Coil antenna, Meets the requirements of FCC 15.203.





## **10 FCC ID: X2F-WX-05 RF Exposure Report**

Note: Please refer to RF Exposure test report: WTS18S05111924-2W.

## **11 Photographs – Model WX-05 Test Setup Photos**

Note: Please refer to Photos: WTS18S05111924-3W.

## **12 Photographs - Constructional Details**

### **12.1 Model WX-05 – External Photos**

Note: Please refer to Photos: WTS18S05111924-3W.

### **12.2 Model WX-05 – Internal Photos**

Note: Please refer to Photos: WTS18S05111924-3W.

=====End of Report=====