

# User's Manual



PORTABLE WIRELESS STORAGE SERVER

English (EN), French (FR), German (DE), Spanish (ES), Dutch (SE), Italian (IT), Portuguese (PT)

# COPYRIGHT INFORMATION

---

Copyright © 2008 EDSL Technologies Inc. All rights reserved.

EDSLab Technologies Inc. reserves the right to make technical changes. EDSL Technologies Inc. assumes no liability for damages incurred directly or indirectly from errors, omissions or discrepancies between this product and the documentation.

Under the copyright laws, this manual may not be copied, in whole or in part, without the written consent of EDSL Technologies Inc. every effort has been made to ensure that the information in this manual is as accurate as possible.

WiDRIVE logo is trademarked.

Other company and product names mentioned herein are trademarks of their respective companies. Mention of third-party products is for informational purposes only and constitutes neither an endorsement nor a recommendation. EDSL Technologies Inc. assumes no responsibility with regard to the performance or use of these products.

**EDSLab Technologies Inc.**

**Email address:** [Support@edslab.com](mailto:Support@edslab.com)

**Taiwan Department Address:** 4F, No. 150., Sec. 2., Nanking E. Rd., Taipei City 10486, Taiwan

**Tel (Taiwan):** +886 2 2506-9338

**Singapore Department Address:** 20, Ayer Rajah Crescent, #08-26, Singapore 139964

**Tel (Singapore):** +65 6871-9918

This manual is provided "as is" without warranty of any kind, express or implied, including but not limited to the implied warranties or conditions of merchantability or fitness for a particular purpose. In no event shall EDSL Technologies Inc., its directors, officers, employees or agents be liable for any indirect, special, incidental, or consequential damages (including damages for loss of profits, loss of business, loss of use or data, interruption of business and the like), even if EDSL Technologies Inc. has been advised of the possibility of such damages arising from any defect or error in this manual or product.

# Federal Communication Commission Interference Statement

---

This equipment has been tested and found to comply with the limits for a Class B digital device, pursuant to Part 15 of the FCC Rules. These limits are designed to provide reasonable protection against harmful interference in a residential installation. This equipment generates, uses and can radiate radio frequency energy and, if not installed and used in accordance with the instructions, may cause harmful interference to radio communications. However, there is no guarantee that interference will not occur in a particular installation. If this equipment does cause harmful interference to radio or television reception, which can be determined by turning the equipment off and on, the user is encouraged to try to correct the interference by one of the following measures:

- Reorient or relocate the receiving antenna.
- Increase the separation between the equipment and receiver.
- Connect the equipment into an outlet on a circuit different from that to which the receiver is connected.
- Consult the dealer or an experienced radio/TV technician for help.

FCC Caution: Any changes or modifications not expressly approved by the party responsible for compliance could void the user's authority to operate this equipment.

This device complies with Part 15 of the FCC Rules. Operation is subject to the following two conditions: (1) This device may not cause harmful interference, and (2) this device must accept any interference received, including interference that may cause undesired operation.

For product available in the USA/Canada market, only channel 1~11 can be operated. Selection of other channels is not possible.

## **IMPORTANT NOTE:**

### **FCC Radiation Exposure Statement:**

This equipment complies with FCC radiation exposure limits set forth for an uncontrolled environment. This equipment should be installed and operated with minimum distance 20cm between the radiator & your body.

# TABLE OF CONTENT

---

1. INTRODUCTION	1
1.1 WiDRIVE Overview	1
1.2 Data Access	1
1.3 Indicators and Switches	2
2. GETTING STARTED	3
2.1 STEP 1: Check for supplied items	3
2.2 STEP 2 : Connecting WiDRIVE for the FIRST time	3
2.3 STEP 3 : Installing WiDRIVE Utility	3
3. WiDRIVE CONFIGURATION	4
3.1 WiDRIVE Presets	4
3.2 WiDRIVE Setup Wizard	4
3.3 WiDRIVE Connection Utility	4
3.4 WiDRIVE Control Panel	5
3.4.1 Status	5
3.4.2 Login	6
3.4.3 Base Network Setup	6
3.4.4 Infrastructure Network Setup	7
3.4.5 Maintenance	7
3.4.5.1 Firmware Upgrade	7
3.4.5.2 Application Upload	7
3.4.5.3 Language Pack Upload	7
3.4.5.4 Hard Drive Format	7
3.4.5.5 Hard Drive Repair	7
3.4.5.6 WiDRIVE Reboot	8
3.4.5.7 WiDRIVE Shutdow	8
3.4.5.8 Factory Reset	8
3.4.6 Help	8
4. WEBFOLDER	9
4.1 WebFolder Mode	9
4.1.1 Working with Folders	9
4.1.2 Working with Files	10
4.1.3 Managing Access to Files and Folders	12
4.2 WebDAV Mode	12
4.2.1 Using Internet Explorer	12
4.2.2 Using Windows XP	13
5. TORRENT	14
5.1 Torrent Operation	14
5.1.1 Install a Torrent Client	14
5.1.2 Download the Torrent File	14
5.1.3 Torrent File Upload	14
5.1.4 Update Status	14
5.2 Torrent Client Configuration	14
5.3 TCP Port Status	15
5.4 Torrent's Status View	15
6. QUESTIONS & ANSWERS	16
7. SAFETY AND CARE	17
8. TECHNICAL SPECIFICATIONS	18
9. REGULATORY INFORMATION	19

# 1. INTRODUCTION

Welcome and thank you for choosing a EDSLab product.

For your convenience, your EDSLab product is furnished with two guides:

- a) a Quick Start Guide, and
- b) This comprehensive PDF User's Manual.

## 1.1 WiDRIVE Overview

o WiDRIVE is a pocket-size portable wireless storage server that is accessible through 802.11b/g WLAN interface. It provides up to 54Mbps bandwidth based on WLAN networks operating at 2.4 GHz frequency band.

o With WiDRIVE, consumers can enjoy the ease and mobility of wireless lifestyle in accessing and sharing their digital content without the hassle of cables.

o A wireless network connection to WiDRIVE can be secured by one of encryption types, i.e. WLAN 64-bit, 128-bit WEP, WPA or WPA2. Prior to the connection to a host, the verification of username and password will be provided for authentication.

o There are two types of wireless networks, Access Point(AP) and Infrastructure modes. WiDRIVE operates easily in both types of wireless networks.

o In AP mode, WiDRIVE acts as a Wireless Router and a DHCP server that assigns IP addresses to hosts that join the wireless network.



- AP mode is normally used under condition when there is no available Wireless Router.

o In Infrastructure mode, WiDRIVE will join Wireless Routers automatically to obtain the necessary IP address.



- Infrastructure mode is used when there is an existing Wireless Router where all wireless Notebooks/PCs are connected to. WiDRIVE can be configured to automatically join the wireless network

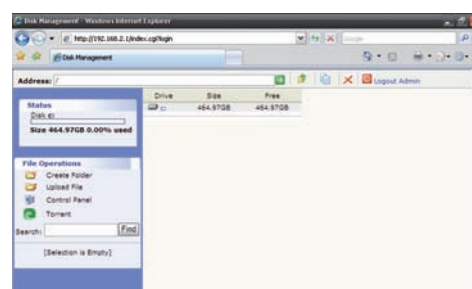
o The manual configuration of IP addresses for both WiDRIVE and host can be avoided during the transition of wireless network types.

## 1.2 Data Access

o WiDRIVE offers two mode of data access, the USB mode and WebFolder mode.

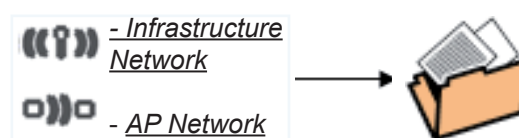
o In USB mode, WiDRIVE is behaved as an external storage device.

o In WebFolder mode, WiDRIVE appears to the connected computer as a web-based file manager.



- WiDRIVE enables users from different hardware platforms (PC, PDA, PSP, Set-top box, etc) to share the content at WebFolder mode.

o WiDRIVE operates in both USB mode and WebFolder mode.



# 1. INTRODUCTION

## 1.3 Indicators and Switches

The diagram below shows the LEDs and Switches on WiDRIVE:



**WiDRIVE**



**DC- Power Adapter**



- o Power Indicator LED is status indicator for charging:
- o Activity Indicator LED is the status indicator for data transfer. The BLUE indicator light will commence flashing during data transfer or communication.
- o The Power ON/OFF button near the upper left corner of WiDRIVE is to switch on and off WiDRIVE
- o When booting up, the Power Indicator LED will stay ORANGE in color until WiDRIVE completes its booting process and ready for operation. If successfully boot up, the Power Indicator LED will turn to GREEN color. The Power Indicator LED will also turn to ORANGE color during shutdown and factory reset.
- o The Network Type Selection switch near the lower left corner of WiDRIVE is to select the wireless network type (AP/Infrastructure).



- o Refer to the figure above for further details.

## 2. GETTING STARTED

### 2.1 STEP 1: Check for supplied items

WiDRIVE portable storage server  
Quick start guide  
Power adapter  
USB cable

### 2.2 STEP 2 : Connecting WiDRIVE for the FIRST time

#### AP mode:

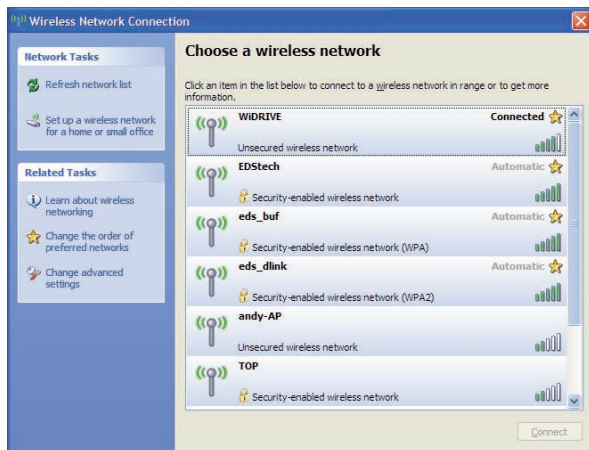
Make sure that WiDRIVE is power off.  
Switch to AP mode.



Power on WiDRIVE.  
Now WiDRIVE behaves like a wireless router.

#### Connect WiDRIVE with Windows XP:

Open Wireless Network Connection tool.  
1. Start -> Connect to -> Wireless Network Connection page



Select on "WiDRIVE" to connect.

#### Login WiDRIVE:

Open browser with: <http://192.168.2.1>

#### Infrastructure mode:

Make sure that WiDRIVE is power off.  
Switch to infrastructure mode.



Power on WiDRIVE.

Now WiDRIVE connects to a wireless router which you had defined in AP mode before.

#### Connect WiDRIVE with Windows XP:

Connect devices like PC to the same router.  
Search WiDRIVE by using \*the WiDRIVE utility.

#### Login WiDRIVE:

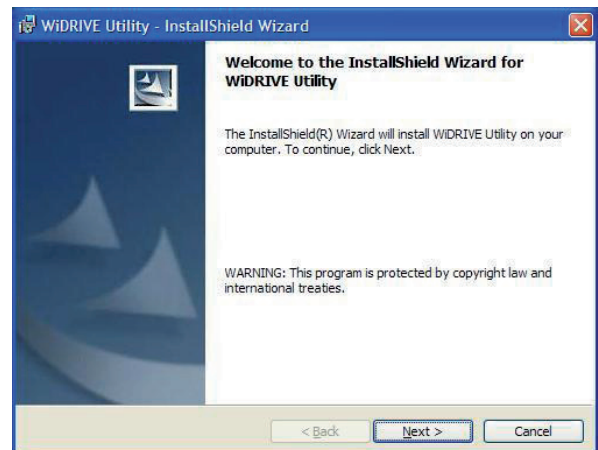
Open browser and type in the searched IP address to log in.

### 2.3 STEP 3 : Installing WiDRIVE Utility

Setup program can be found in HDD or download from official website. Please install utilities with following steps:

Double click the setup icon.

Follow instructions to install software.



Two utilities will be available includes:

1. WiDRIVE Setup Wizard.
2. WiDRIVE Connection Utility.

The first one is used to quickly configure basic settings within WiDRIVE, and another one is used to discover WiDRIVE when in infrastructure mode.



# 3. CONFIGURATION

## 3.1 WiDRIVE Presets

WiDRIVE comes pre-configured from the factory with the following settings:

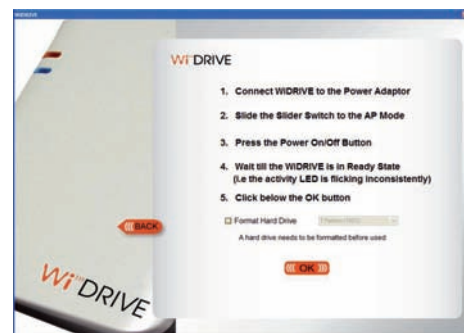
**IP Address** : 192.168.2.1  
**Subnet Mask** : 255.255.255.0  
**Wireless Channel** : 10  
**SSID** : WiDRIVE  
**WEP/WPA/WPA2 Key** : none

These factory settings can be changed.

**Admin Username** : Admin  
**Admin Password** : admin  
**Guest Username** : Guest  
**Guest Password** : guest

## 3.2 WiDRIVE Setup Wizard

WiDRIVE Setup Wizard provides step-by-step configuration of WiDRIVE in AP and Infrastructure modes.

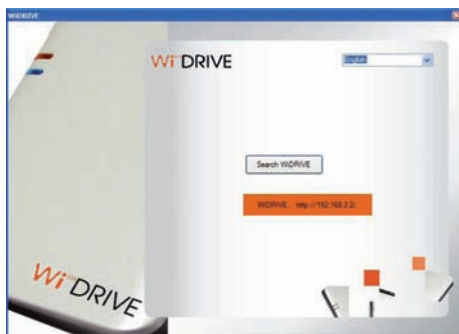
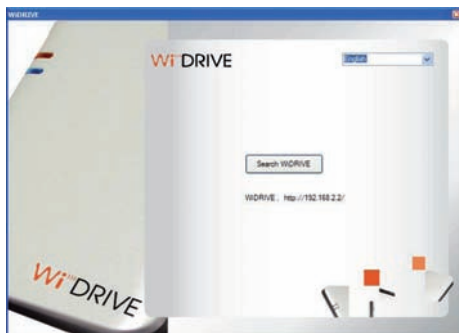
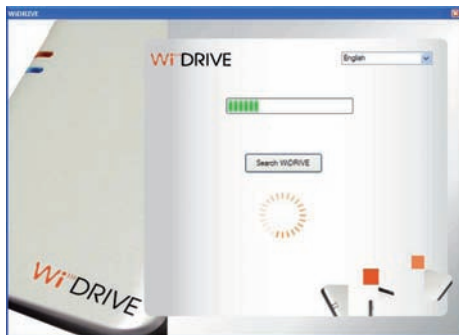


## 3.3 WiDRIVE Connection Utility

Step 1: Start WiDRIVE Connection Utility from the Start menu.

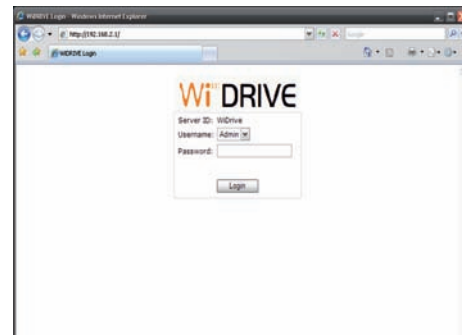






Step 2: Select a highlight from the list.

WiDRIVE Connection Utility launch a web browser and have it automatically open a specified URL by fetching WiDRIVE's IP address. After a few seconds, you should see a login screen similar to the following:




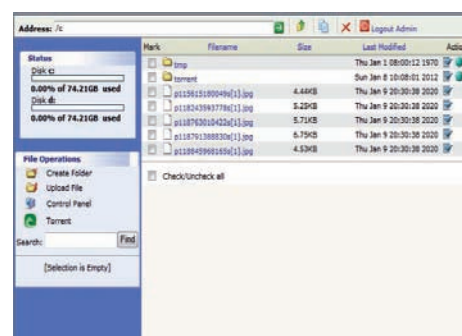
There is a dropdown menu for the username field in the login screen. Select Username ("Admin") and type Password (factory configured password "admin") then click "Login".

If the device has not been configured, use the default admin password. You will later want to change the Password entries from the default (admin) to something else.

### 3.4 WiDRIVE Control Panel

Control Panel is a Web-browser graphical user interface (GUI) that provides a structured approach to monitor, configure, and control the operation of WiDRIVE. WiDRIVE can be setup into AP mode and configured for infrastructure wireless access.

Clicking on the Control Panel icon  opens a new screen with options to change settings of WiDRIVE.



The Control Panel provides access to Status, Login, Base Network, AP Profile, Maintenance, and Help.

#### 3.4.1 Status

The Status panel displays runtime status. This includes details about the hard drive, wireless, TCP/IP configu-

ration, SSID, Time Zone, Torrent, UPnP portmap, Port status and connected PC/device, etc.

To change the time zone, click Change button, choose your local time zone and click Save. The current time of selected time zone will be shown in the Status window.

The Torrent Client status is ON when Torrent is up and running, OFF when Torrent is not running in the AP mode and Need Install if Torrent software is missing.

WiDRIVE Connection Utility requires the UPnP discovery protocol to discover WIDRIVE on the network.

Click on the 'MAP' button to map Incoming packet's port number to the local computer with IP address.

On connected PC/device, make sure the device is connected to your computer.



### 3.4.2 Login

The Login panel is where the administrator defines the Admin and Guest accounts, and Dynamic DNS Access.



Enter the new admin's and guest's passwords in the two fields and press the Apply button. The password can be up to 12 characters.

The Dynamic DNS Access option allows you to set the DNS server. You may sign up Dynamic DNS service at <http://www.dyndns.org> and there you can also register "domain names".

Enter one domain name you have registered.

Enter the username and password used for sign-up.

Set the port number of external port from 1025 to 65535.

Check the "Disabled" radio button to stop the Dynamic DNS service.

### 3.4.3 Base Network Setup

Click on the Basic Network panel on the Control Panel. Using this page you may configure the the IP address of the device as well as channel, and SSID.



Enter the IP address of the device and the subnet mask for the IP address.

The SSID is a unique named shared amongst all the points of the wireless network. It must be identical on all points of the wireless network and cannot exceed 32 characters.

Select a channel from the drop-down list. The channels available are based on the country's regulation.

Select Disable radio button if your wireless network does not use any type of encryption, WEP 64, WEP 128, WPA, or WPA2 radio button if your wireless network uses this encryption.

Create the encryption keys depending on the type of encryption you choose. 64bit-hex keys require 10 characters, where as 128-bit keys require 26 characters. A hex key is defined as a number between 0 through 9 and letter between A through F.

Click on the Save button to confirm the changes and then click on the OK button on the Success dialog to return to the previous window. The countdown timer will start at 50 secs once these changes have been applied.

### 3.4.4 Infrastructure Network Setup

Click on the AP Profile panel on the Control Panel.



Select Obtain IP From AP or enter static IP address based on your network plan.

Enter the IP address of the device. When Mode is set to Obtain IP From AP, this field is read-only and reports the device's current IP address.

Enter the subnet mask for the IP address. When Mode is set to Obtain IP From AP, this field is read-only and reports the device's current subnet mask.

Enter SSID, select WEP Encryption to be 64 bits or 128 bits depending on your wireless router/AP setting. Enter the exact same KEY that your used for the wireless router/AP. Save the settings to complete the change of the wireless router SSID. The new settings have no immediate effect until you either reboot WiDRIVE or press "Apply" to save and automatically restart WiDRIVE.

### 3.4.5 Maintenance

Click on the Maintenance panel on the Control Panel.



#### 3.4.5.1 Firmware Upgrade

Click on the Browse button and then select the appropriate firmware and then click on the Upload button. Make sure that downloaded the appropriate firmware from your vendor.

#### 3.4.5.2 Application Upload

Click on the Browse button and then select the appropriate application and then click on the Upload button.

#### 3.4.5.3 Language Pack Upload

Click on the Browse button and then select the language to add and then click on the Upload button.

#### 3.4.5.4 Hard Drive Format

You'll format (only 1 partition: 100% of the hard drive) or split the hard drive (50:50, 25:75 or 75:25) in place of the list of the partitions. You may need to wait for some minutes as it takes time to format the hard drive.

**CAUTION:** This operation will completely erase all data stored on the HDD.

#### 3.4.5.5 Hard Drive Repair

Click the Repair button. This will start the process of verifying and repairing, if necessary, the hard drive volume.

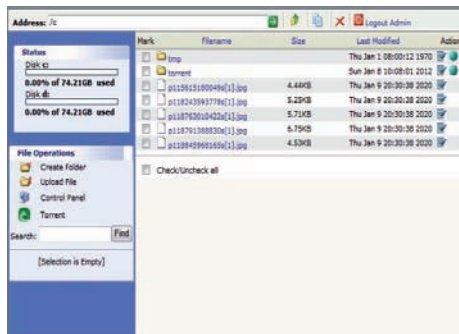


# 4. WEBFOLDER

The WebFolder provides a web-based access to files and folders.

## 4.1 WebFolder Mode

The Web interface is displayed once you have logged in. Folder hierarchies organize the repository so that users can browse through it easily.




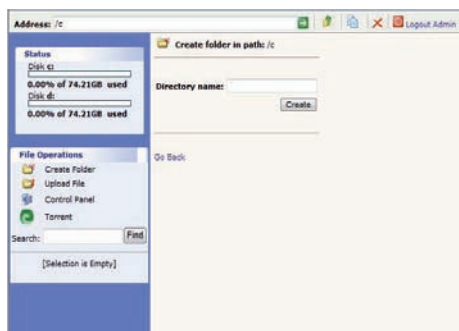
### 4.1.1 Working with Folders

To open a folder, click its icon or file name in the File List.


You can also use the Address Bar to navigate up or down your file hierarchy. (HINT: users can directly type in the path in the Address input too)

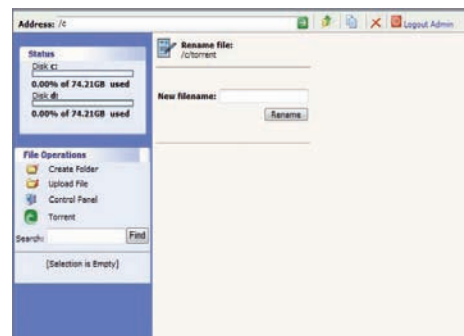
To create a folder:

1. Navigate to the folder in which you want to create your new folder.
2. Click the Create Folder icon .
3. In the dialog, type the name for your new folder.
4. Click Create.




To rename a folder:



1. In the File List, click the Rename icon  to the right of the folder.
2. Type the new name for the folder.
3. Click Rename.

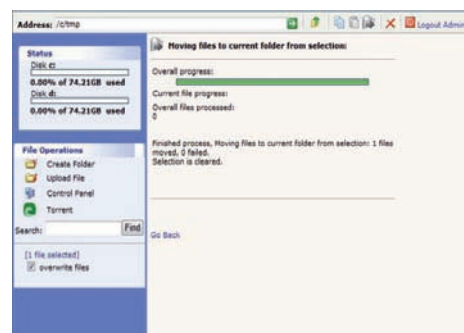
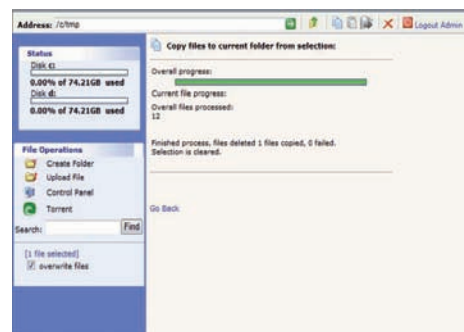


To copy/move a folder:

1. Navigate to the parent folder of the folder you want to copy or move.
2. In the File List, click the Select checkbox to the left of the folder.
3. Finalize the selection by clicking on the Add to Selection button  in the toolbar.

4. Navigate to the folder where you want to paste the folder.

5. Click the Copy icon  or Move icon  to place the selected folders in the desired folder.



Copying a folder in this way makes a second copy of the folder and all its contents. Moving a folder in this way relocates the folder in a single location.

To delete a folder:

1. Navigate to the parent folder of the folder you want

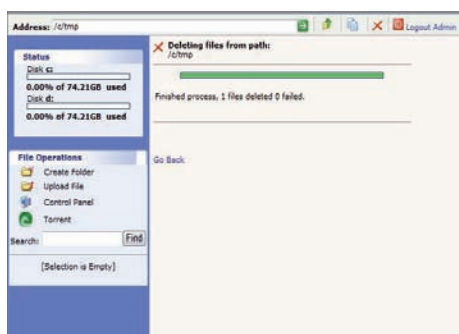
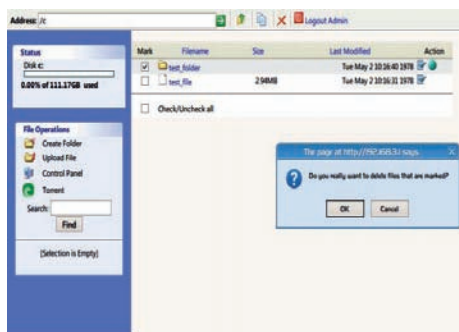


to delete.

2. In the File List, click the Select checkbox to the left of the folder.

3. Click the Delete icon .

4. In the confirmation dialog, click OK to delete the folder.



## 4.1.2 Working with Files

To upload a file:

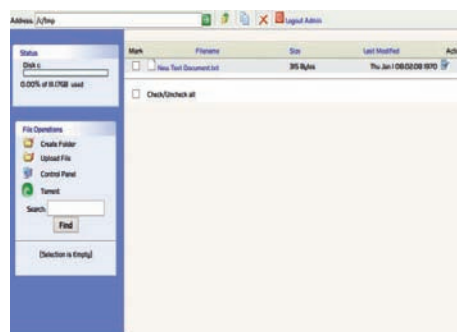
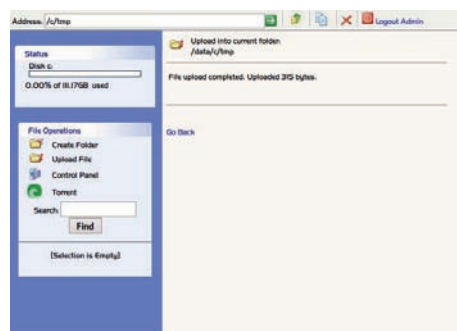
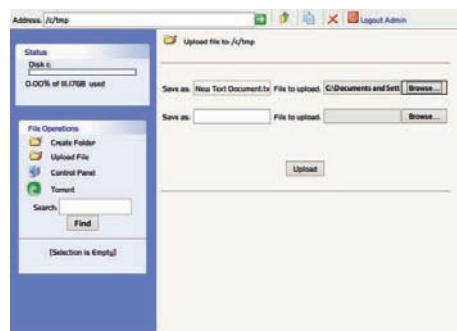
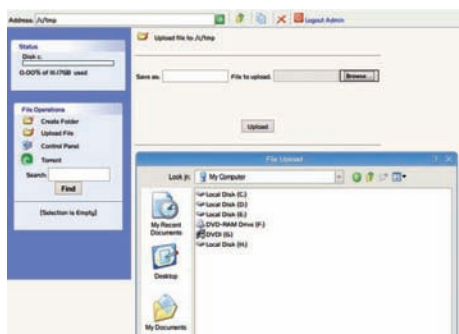
1. Navigate to the folder where you want to store the file.

2. Click the Upload File icon .

3. In the Upload window, click the Browse button.

4. Locate the file you want to upload and click Open.


5. In the Upload window, click the Upload button. The file is added to the File List.




To copy a file:

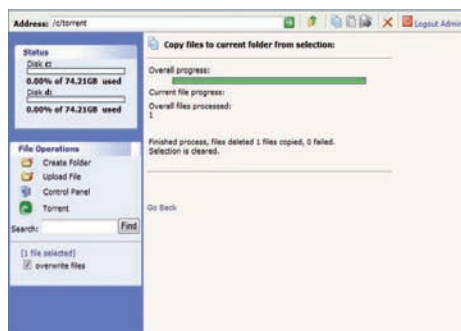
1. Navigate to the parent folder of the folder you want to copy or move.

2. In the File List, click the Select checkbox to the left of the folder.

3. Finalize the selection by clicking on the File Select button  in the toolbar.

4. Navigate to the folder where you want the copied file(s) to appear (which could also be the current folder).

5. Click the Copy icon  to place the selected files in the desired folder. If a file by that name already exists, WiDRIVE appends the words "Copy of" to the name of the file.




To move a file:

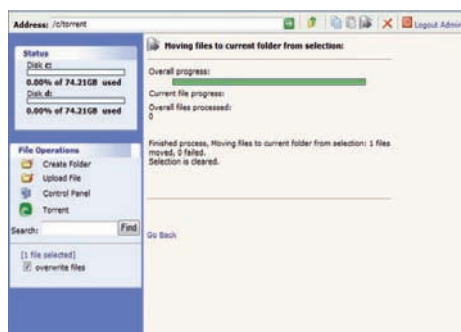
1. In the File List, click the Select checkbox to the left of the file(s) you want to move.
2. Finalize the selection by clicking on the File Select



button in the toolbar.


3. Navigate to the folder to which you want to move the file.

4. Click the Move icon  to place the selected files in the desired folder. If a file by that name already exists, WiDRIVE appends the words "Copy of" to the name of the file.

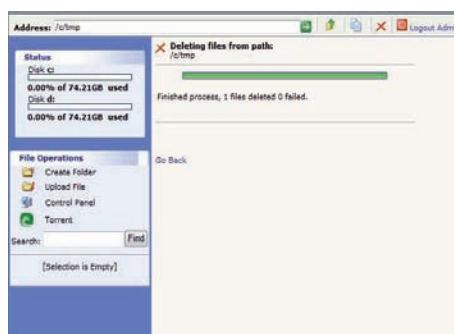
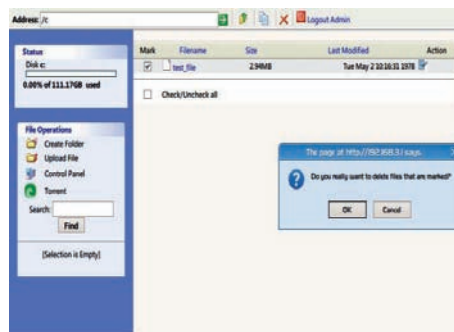


To delete a file:


1. Navigate to the parent folder of the folder you want to delete.
2. In the File List, click the Select checkbox to the left of the file(s) you want to delete.

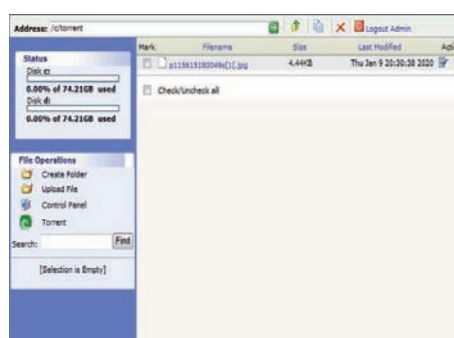
3. Click the Delete icon .

4. In the confirmation dialog, click OK to confirm the delete.

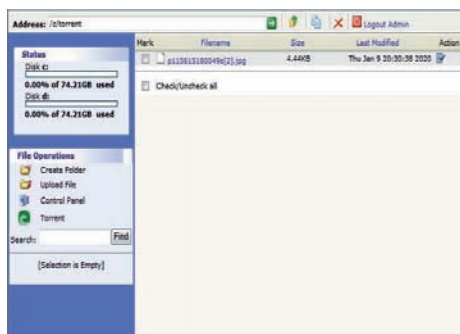
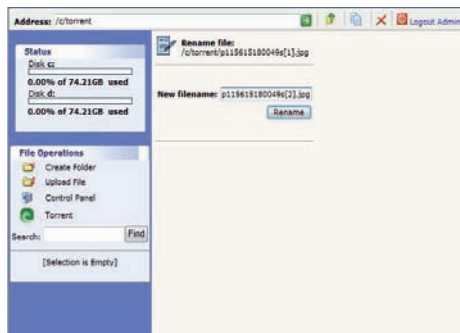


To change the name of a file:

1. In the File List, click the Rename icon  to the right of the file(s) you want to rename.
2. Type the new name for the file.
3. Click Rename to save the file with the new name.

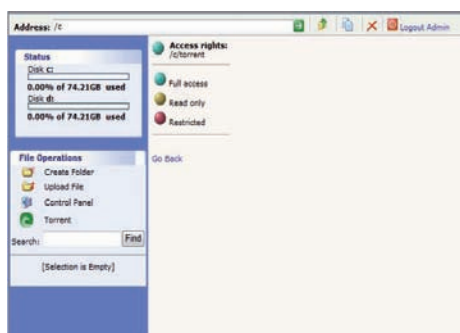






### 4.1.3 Managing Access to Files and Folders

The permissions upon which the color scheme of folders is based can take three values, namely the values restricted access (red icon), read (amber icon), full access (green icon). Only the administrator can change permissions and take ownership, plus perform the actions of read, copy and delete at files and folders.



To change the folder permissions:

1. In the File List, click the Access Rights icon to the right of the folder(s) you want to change.

2. Click on one of the color icons in the folder permission screen.

The Access Rights icon of the folder(s) you changed appears in the Action column.

## 4.2 WebDAV Mode

WebDAV is used to access the files and folders on a remote web server.

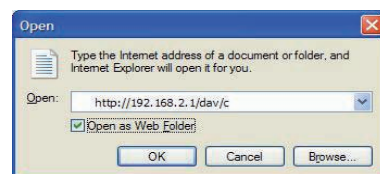
### 4.2.1 Using Internet Explorer

Using the Internet Explorer browser, click File --> Open.

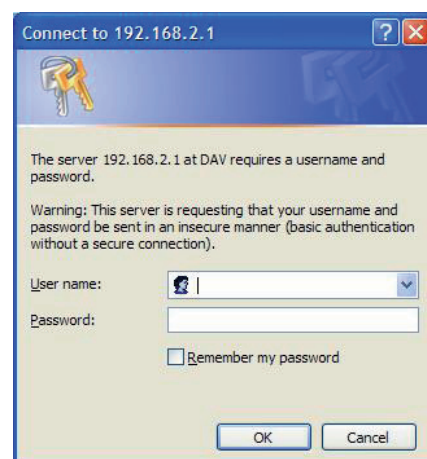
Enter the WebDAV URL for WiDRIVE, in the following format:

`http://192.168.2.1/dav/c`

Select the option "Open as Web Folder" and click OK.

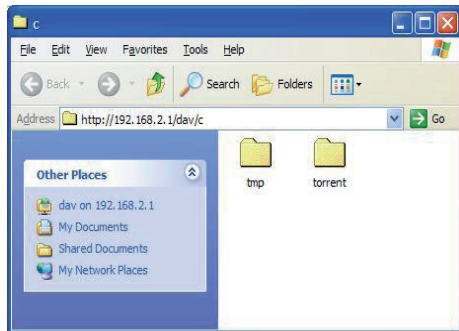


When prompted, enter username ("Admin") and password ("admin"). The username and password are case-sensitive.



---

You should now see a view of the WiDRIVE folders/files similar to the view below.



## 4.2.2 Using Windows XP

Your WebDAV web folders can be viewed in the Windows Explorer view under 'My Network Places'.

1. To begin the Add Network Place Wizard:
  - Click My Network Places
  - Click Add a Network Place
  - Click Next.
2. Select Choose another network location, and then click Next.
3. In the "Internet or network address:" field, enter the WebDAV URL for WiDRIVE in the following format:


`http://192.168.2.1/dav/c`

4. Click Next.
5. You see a dialog box asking you to log into your site. Enter your login name and password for your site and then click OK.
6. Enter a name for the WebFolder.
7. Click Next.
8. Click Finish.

The Wizard creates a link to your site on the My Network Places page.


To access your documents double-click this link.

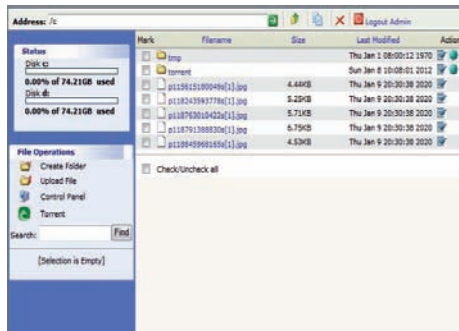
While viewing your desktop folders and your WebDav web folders in the Windows Explorer, you can drag and drop folders and files back and forth between your PC and WiDRIVE.

Click on Logout icon  in the Address Bar to logout the WebFolder.

# 5. TORRENT

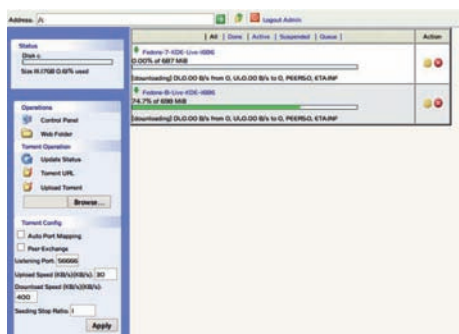
This section is to show you how to download a Torrent Client, torrents, and ultimately end up with the file(s) that you want.

Clicking on the Torrent icon  in the File Operation section opens a new screen with options to start, stop, and remove torrents, tweak bandwidth settings for your torrents.



## 5.1 Torrent Operation

WiDRIVE can run as a torrent client that is capable of preparing, requesting, and transmitting any type of computer file over a network, using the protocol.



### 5.1.1 Install a Torrent Client

First you need the torrent client software to be able to use the torrent.

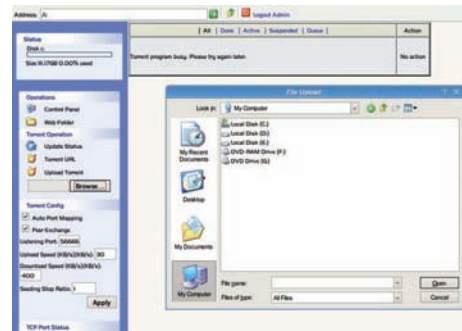
To use a Torrent client, you need to upload the torrent client software into WiDRIVE. For more information, please refer to Section 3.4.5.2.

### 5.1.2 Download the Torrent File

The next step is to add a torrent via the 'Torrent URL' link. You can choose to open a torrent file, an URL or even a folder (with torrent files in it).

### 5.1.3 Torrent File Upload

A torrent file is upload to WiDRIVE through web interface.



1. click the "Browse" button and select your torrent file
2. click "Upload Torrent".

The torrent client will automatically make the connections and start the file sharing process with external peers.

### 5.1.4 Update Status

You can refresh current torrent page by clicking the "Update Status".

## 5.2 Torrent Client Configuration

You can set the following settings on the torrent client.

Auto Config UPnP port mapping (UPnP support is required). Uncheck "Auto Port Mapping". If this is checked, you will experience it slowing down speeds. It's not necessary if you manually forward your ports.

Check "Peer Exchange".

Listening Port for incoming connections (make sure your port is available). Common values are 2048 – 65535.

Enter maximum upload rate in kB/s. Your optimal upload speed will be 80% of the maximum upload speed.

Enter maximum download rate in kB/s. Set your maximum download speed at 90% of the maximum download speed you're capable of.

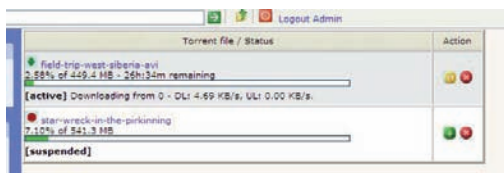
Set WiDRIVE to stop seeding after reaching a certain ratio, i.e. Seeding Stop Ratio.

Press "Apply" to apply the new configuration.



## 5.3 TCP Port Status


You can check the port mapping status of WiDRIVES.

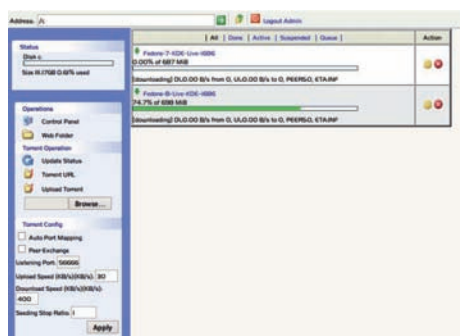
## 5.4 Torrent's Status View



Each of the individual torrent file has its own status and start/stop control. Once a download is started you'll see a progress bar, including percentage and status detail, like the download rate or the number of peers and seeds, and the current state(active, downloading, suspended, or completed) of torrents(in brackets).


Click on a torrent's little pause  /resume  icon (to the right of the progress bar,) to resume a torrent download or pause a torrent temporarily halts its connections and keeps it in memory. Use Pause if you only need to stop an active torrent for a few seconds..

Click on a torrent's little delete icon  (to the right of the progress bar,) to stop and delete a job to free up space after it has finished downloading or manually delete an incomplete job.



On the top bar of the right pane:

1. All - all the torrents have or haven't finished downloading.
2. Done - all the torrents have finished downloading and are seeding.
3. Active - all the torrents in the active uploads.
4. Suspended - all the unfinished (suspended) torrents.
5. Queue - all the torrents in the queued uploads.

There are Control Panel icon  and WebFolder icon  in the Operations section.

# 6. QUESTIONS & ANSWERS

---

**Q1: I cannot detect WiDRIVE on computer's wireless network connection. What could be the cause?**

**A1:** This could be due to a weak wireless signal or interference from other devices (radio, cordless phone, microwave oven, etc).

Do check that the WiDRIVE is operating in AP mode. A computer will not be able to detect if WiDRIVE is switched to Infrastructure mode.

To ensure a good wireless signal, you may place WiDRIVE closer to your computer and make sure no metallic obstruction is blocking the embedded antenna.

You may also try renewing the wireless network connection on your computer and starting a new network scan. This can be done by selecting [Repair] option on the Windows's Wireless Network Connection.

**Q2: I am connected to the WiDRIVE's network but unable to access it. What should I do?**

**A2:** Check that you do not have a conflicting wired network connection. If there is a wired network connection, ensure its IP address is not on the same IP subnet as the IP address of WiDRIVE. To change the IP address or subnet of WiDRIVE, you can follow instructions in Section 3.4.

**Q3: My WiDRIVE is connected. I can key in the IP address of WiDRIVE in the web browser and make connection. However, WiDRIVE Utility indicates that it is not connected. Is WiDRIVE Utility broken?**

**A3:** This may be caused by the firewall that blocks the UPnP discovery protocol on WiDRIVE. Please consult the firewall provider on opening the firewall for the UPnP discovery protocol.

The UPnP server is run on the internal hard drive of WiDRIVE. Please ensure that you have the UPnP server uploaded into the hard drive. You can determine the status of the UPnP through the Control Panel of WiDRIVE.

If the UPnP installation is not found, please upload it from [www.edslab.com](http://www.edslab.com) through the Control Panel of WiDRIVE.

**Q4: How do I find out the IP address of WiDRIVE?**

**A4:** WiDRIVE Connect Utility will search and detect for any WiDRIVE that is attached to the same network that the PC is connected to. When WiDRIVE is detected, WiDRIVE Connect Utility will display the IP address of WiDRIVE.

**Q5: How do I find out WiDRIVE's IP address without using the WiDRIVE Utility?**

**A5:** To determine the IP address of WiDRIVE when operating in AP mode, use the command 'ipconfig/all' at the command prompt. The IP address of DHCP Server reported by ipconfig belongs to WiDRIVE.

**Q6 : I am getting very slow data transfer. How do I improve the speed?**

**A6 :** When many users simultaneously accessing WiDRIVE, the performance will be affected as the wireless bandwidth is shared among users. Please try to switch from Infrastructure network to AP network. (In general, the data throughput between two devices in an AP network is twice of that in an Infrastructure network)

**Q7: I forgot the Admin Username and Password for WiDRIVE. Please help me!**

**A7:** You can restore WiDRIVE to its original factory condition by powering up WiDRIVE and then pressing the reset button using a paper clip.

**Q8: Why is WiDRIVE enclosure made of plastic?**

**A8:** Wireless signal can be obstructed by metallic material. To ensure proper signal from the embedded antenna, WiDRIVE is manufactured using superior plastic and craftsmanship.

**Q9: The Torrent does not seems active, always shows zero upload and download speed.**

**A9:** Please try to change the Torrent Port number used. If you Internet Router support UPnP or NAT, you may wish to enable the Torrent auto check if you are connected to the same wireless network as WiDRIVE. If you are running the WiDRIVE Utility, click on [Scan] to confirm you have a connection to WiDRIVE.

# 7. SAFETY AND CARE

---

## **Please read the following safety information prior to using WiDRIVE.**

- o Only qualified personnel should service WiDRIVE. Faulty installation or service may be dangerous and may invalidate any warranty applicable to WiDRIVE.
- o Do not store or carry flammable liquids, gases, or explosive materials in the same compartment as WiDRIVE.
- o Switch your WiDRIVE off before boarding an aircraft. The use of wireless devices in aircraft may be dangerous to the operation of the aircraft, and is illegal.
- o Switch your WiDRIVE off when in any area with a potentially explosive atmosphere, and obey all signs and instructions. Sparks can cause an explosion or fire resulting in bodily injury or even death.
- o WiDRIVE can cause interference to pacemakers, hearing aids, and medical equipment. Maintain safe distances from medical devices when operating in such environments.
- o Use only supplied battery packs and charger come with WiDRIVE to avoid electrical damage, explosion, or chemical leak.
- o Do not drop or knock WiDRIVE. Rough handling can damage the electronics board and hard drive in WiDRIVE.
- o Do not expose WiDRIVE to extreme temperature. Do not put WiDRIVE on heating devices such as microwave oven, stove, or radiator. The device may explode when overheated.
- o Clean WiDRIVE surface with soft damp cloth. Do not use any cleaning agent.
- o Keep WiDRIVE dry. Any precipitation, humidity, and liquids can corrode electronic circuits in WiDRIVE.



# 8. TECHNICAL SPECIFICATIONS

## Dimensions

**Size:** 130mm x 79mm x 23mm  
**Weight (Without 2.5"HD):** 110g

## Wireless Interface

**Standard:** IEEE 802.11b & 802.11g standards  
**Frequency Band:** 2.412GHz – 2.472GHz ISM BW  
**Modulation Technology:** 802.11b: CCK, DQPSK, DB-PSK; 802.11g: OFDM  
**Data rate:** Up to 54Mbps  
**Mode:** AP, Infrastructure  
**Range:** Up to 25m

## Security Features

Wired Equivalent Privacy (WEP) 64/128 bit encryption,  
WPA/WPA2 PSK  
Username and password protected access

## Network Protocols

DCHP Client, DCHP Server  
TCP/IP  
HTTP  
WebDav  
UPNP  
DDNS

## Internal Storage

**Capacity:** Prevailing market HDD capacity  
**Form Factor:** 2.5" HDD  
**Interface:** SATA  
**Acoustics (20GB typical):** Idle 2.0 Seek 2.6 (A-Weighted Sound Power (Bels))

## LED indicator

Tri Color LED Indicator  
Activity-Flashing Blue  
Standby or Charging -Still Orange  
Lower power-Flashing Orange,  
Button/Switch: On/Off, AP/Infrastructure selection

## Power

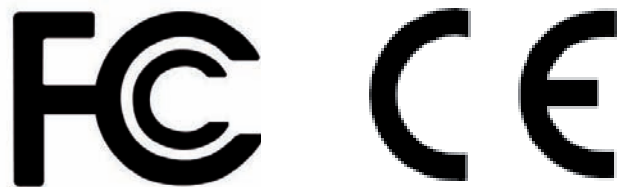
**AC source:** 110/230V 50/60HZ  
**DC source:** 5V +/- 5%, 2A

## System Requirements

Windows XP, SP2, Vista, Macintosh, Web browser.  
Pentium III or higher with 128MB RAM  
802.11 b/g interface  
USB interface

## Environment

**Operating temperatures:** 5 to 40°C  
**Storage temperatures:** -10 to 50°C  
**Relative humidity:** 5% to 90%  
**Shock operational:** 300G or less (2ms, half sine wave)  
**Non-operational:** 1000G or less (1ms, half sine wave)





# 9. REGULATORY INFORMATION

## Need help?

For the latest driver updates, user manuals & FAQs please have a look at the EDSLab options & services support page:

[www.EDSLab.com](http://www.EDSLab.com)

For the EDSLab hotline numbers

## **CE compliance**

This product is CE marked in accordance with the requirements of the applicable EU Directives. Responsible for CE marking is EDSLab Technologies Inc. A copy of the official Declaration of Conformity can be obtained from following website: <http://www.edslab.com>

### Working Environment

The Electromagnetic Compliance (EMC) of this product has been verified typically for this product category for a so called Residential, Commercial & Light Industry Environment. Any other working environment has not been verified by EDSLab Technologies Inc. and the use of this product in these working environments is maybe restricted or cannot be recommended. Possible consequences of the use of this product in non verified working environments can be: Disturbances of other products or of this product in the nearby surrounding area with temporarily malfunction or data loss/corruption as result. Example of non verified working environments and related advices:

Industrial environment (e.g. environments where a mains voltage of 380V three-phase is being used mainly): Danger of disturbances of this product due to possible strong electromagnetic fields especially near to big machinery or power units.

Medical environment: The compliance to the Medical Product Directive has not been verified by EDSLab; therefore this product cannot be used as a medical product without further verification. The use in usual office environments e.g. in hospitals should be no problem if there is no

This product is not certified as a medical product according to the Medical Product Directive 93/42 EEC.

Automotive environment: Please search the owner instructions of the related vehicle for advices regarding the use of this product (category).

Aviation environment: Please follow the instructions of the flight personnel regarding restrictions of use.

Additional environments not related to EMC

Outdoor use: As a typical home/office equipment this product has no special resistance against ingress of moisture and is not strong shock proofed.

# 9. REGULATORY INFORMATION

## Text for WEE

### Text WEEE & Battery : for option with battery

Following information is only valid for EU-member States:

#### Disposal of products



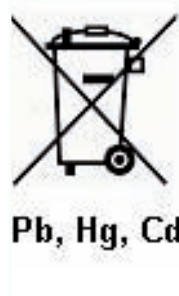
The crossed out wheeled dust bin symbol indicates that products must be collected and disposed of separately from household waste. Integrated batteries and accumulators can be disposed of with the product. They will be separated at the recycling centres.

The black bar indicates that the product was placed on the market after August 13, 2005.

By participating in separate collection of products and batteries, you will help to assure the proper disposal of products and batteries and thus help to prevent potential negative consequences for the environment and human health.

For more detailed information about the collection and recycling programmes available in your country, contact your local city office or the shop where you purchased the product.

#### Disposal of batteries and/or accumulators



The crossed out wheeled dust bin symbol indicates that batteries and/or accumulators must be collected and disposed of separately from household waste.

If the battery or accumulator contains more than the specified values of lead (Pb), mercury (Hg), and/or cadmium (Cd) defined in the Battery Directive (2006/66/EC), then the chemical symbols for lead (Pb), mercury (Hg) and/or cadmium (Cd) will appear below the crossed out wheeled dust bin symbol.

By participating in separate collection of batteries, you will help to assure the proper disposal of products and batteries and thus help to prevent potential negative consequences for the environment and human health.

For more detailed information about the collection and recycling programmes available in your country, contact your local city office or the shop where you purchased the product.

© 2008 EDSSlab Technologies Inc.  
All rights reserved

EDSSlab reserves the right to make technical changes. EDSSlab assumes no liability for damages incurred directly or indirectly from errors, omissions or discrepancies between this product and the documentation.