

Appendix B. SAR Plots of SAR Measurement

The SAR plots for highest measured SAR in each exposure configuration, wireless mode and frequency band combination, and measured SAR > 1.5 W/kg are shown as follows.

P01 GSM850_GPRS12_Left Cheek_Ch128

DUT: 171201W001

Communication System: GPRS12; Frequency: 824.2 MHz; Duty Cycle: 1:2

Medium: H835_1122 Medium parameters used: $f = 824.2$ MHz; $\sigma = 0.907$ S/m; $\epsilon_r = 43.148$; $\rho = 1000$ kg/m³

Ambient Temperature : 23.4 °C; Liquid Temperature : 22.2 °C

DASY5 Configuration:

- Probe: EX3DV4 - SN3873; ConvF(9.74, 9.74, 9.74); Calibrated: 2017/08/25;
- Sensor-Surface: 1.4mm (Mechanical Surface Detection)
- Electronics: DAE4 Sn1341; Calibrated: 2017/08/23
- Phantom: Left Phantom with CRP v5.0; Type: QD000P40CD; Serial: TP:1722
- Measurement SW: DASY52, Version 52.8 (8); SEMCAD X Version 14.6.10 (7331)

- **Area Scan (71x121x1):** Interpolated grid: dx=1.500 mm, dy=1.500 mm

Maximum value of SAR (interpolated) = 0.427 W/kg

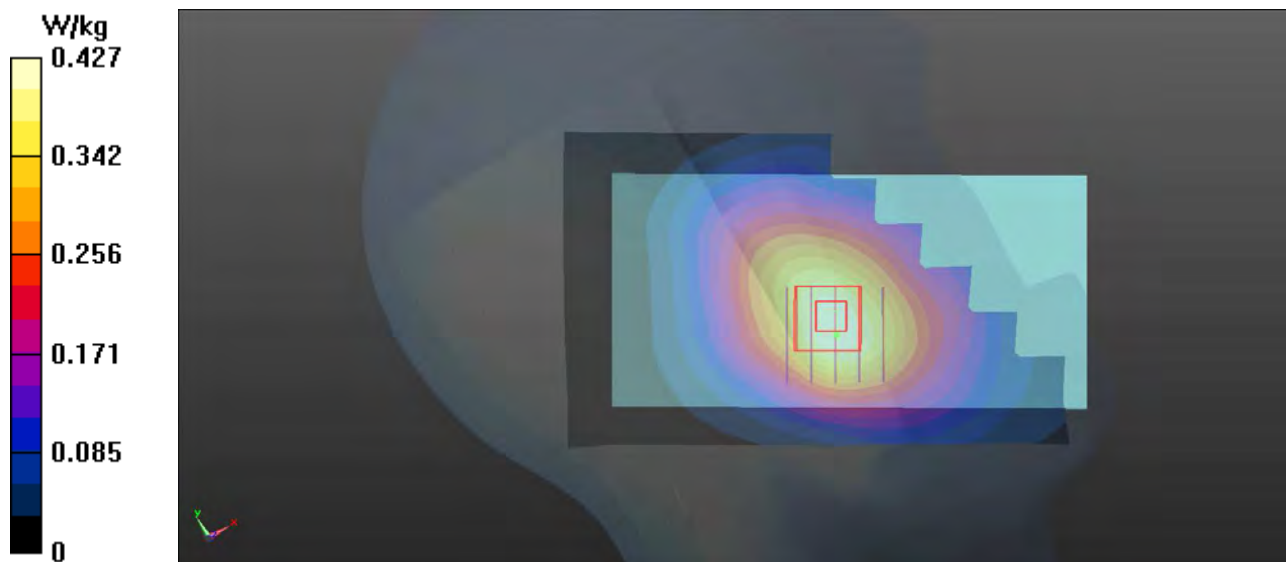
- **Zoom Scan (5x5x7)/Cube 0:** Measurement grid: dx=8mm, dy=8mm, dz=5mm

Reference Value = 5.172 V/m; Power Drift = 0.02 dB

Peak SAR (extrapolated) = 0.443 W/kg

SAR(1 g) = 0.359 W/kg; SAR(10 g) = 0.275 W/kg

Maximum value of SAR (measured) = 0.413 W/kg



P02 GSM1900_GPRS12_Right Cheek_Ch512

DUT: 171201W001

Communication System: GPRS12; Frequency: 1850.2 MHz; Duty Cycle: 1:2

Medium: H1900_1126 Medium parameters used: $f = 1850.2$ MHz; $\sigma = 1.336$ S/m; $\epsilon_r = 40.005$; $\rho = 1000$ kg/m³

Ambient Temperature : 23.2 °C ; Liquid Temperature : 22.5 °C

DASY5 Configuration:

- Probe: EX3DV4 - SN3873; ConvF(8.37, 8.37, 8.37); Calibrated: 2017/08/25;
- Sensor-Surface: 1.4mm (Mechanical Surface Detection)
- Electronics: DAE4 Sn1341; Calibrated: 2017/08/23
- Phantom: Front Phantom with CRP v5.0; Type: QD000P40CD; Serial: TP:1695
- Measurement SW: DASY52, Version 52.8 (8); SEMCAD X Version 14.6.10 (7331)

- **Area Scan (71x121x1):** Interpolated grid: dx=1.500 mm, dy=1.500 mm

Maximum value of SAR (interpolated) = 0.376 W/kg

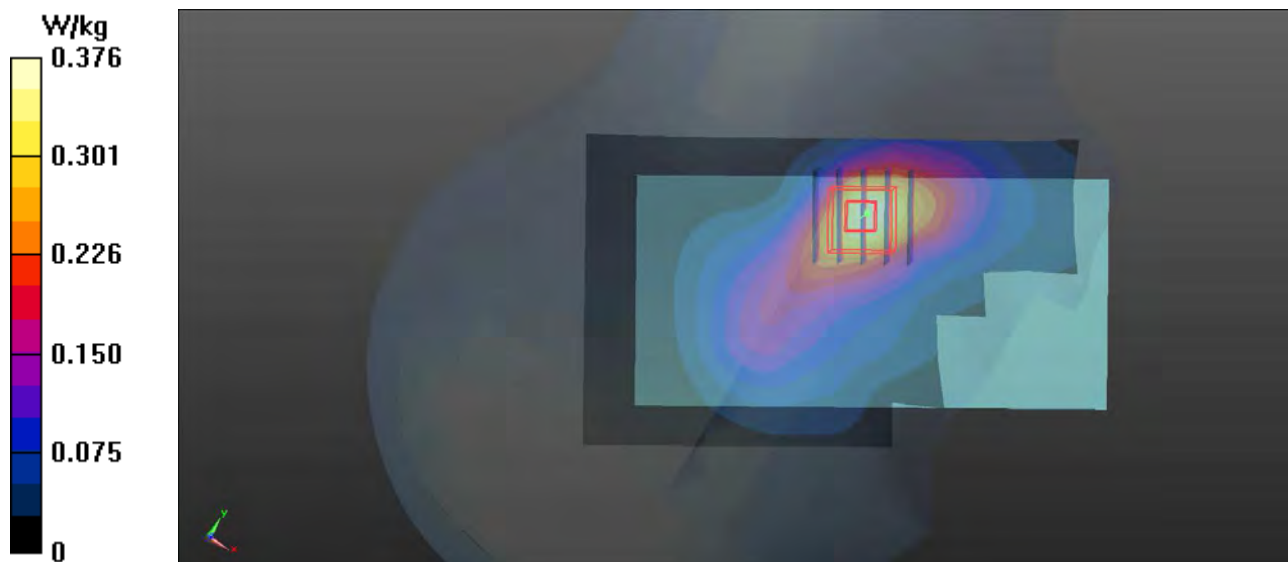
- **Zoom Scan (5x5x7)/Cube 0:** Measurement grid: dx=8mm, dy=8mm, dz=5mm

Reference Value = 3.377 V/m; Power Drift = -0.01 dB

Peak SAR (extrapolated) = 0.407 W/kg

SAR(1 g) = 0.267 W/kg; SAR(10 g) = 0.168 W/kg

Maximum value of SAR (measured) = 0.360 W/kg



P03 WCDMA II_RMC12.2K_Right Cheek_Ch9538

DUT: 171201W001

Communication System: WCDMA; Frequency: 1907.6 MHz; Duty Cycle: 1:1

Medium: H1900_1126 Medium parameters used: $f = 1852.4$ MHz; $\sigma = 1.338$ S/m; $\epsilon_r = 39.995$; $\rho = 1000$ kg/m³

Ambient Temperature : 23.2 °C ; Liquid Temperature : 22.5 °C

DASY5 Configuration:

- Probe: EX3DV4 - SN3873; ConvF(8.37, 8.37, 8.37); Calibrated: 2017/08/25;
- Sensor-Surface: 1.4mm (Mechanical Surface Detection)
- Electronics: DAE4 Sn1341; Calibrated: 2017/08/23
- Phantom: Front Phantom with CRP v5.0; Type: QD000P40CD; Serial: TP:1695
- Measurement SW: DASY52, Version 52.8 (8); SEMCAD X Version 14.6.10 (7331)

- **Area Scan (71x121x1):** Interpolated grid: dx=1.500 mm, dy=1.500 mm

Maximum value of SAR (interpolated) = 0.845 W/kg

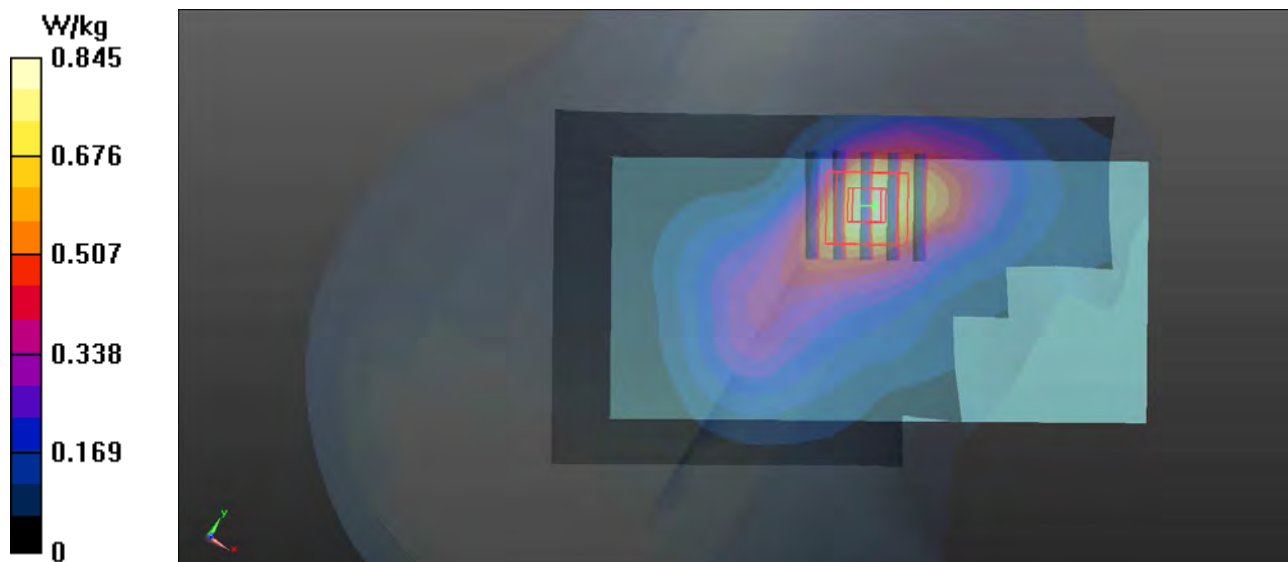
- **Zoom Scan (5x5x7)/Cube 0:** Measurement grid: dx=8mm, dy=8mm, dz=5mm

Reference Value = 5.003 V/m; Power Drift = 0.00 dB

Peak SAR (extrapolated) = 0.905 W/kg

SAR(1 g) = 0.599 W/kg; SAR(10 g) = 0.375 W/kg

Maximum value of SAR (measured) = 0.797 W/kg



P04 WCDMA IV_RMC12.2K_Right Cheek_Ch1513

DUT: 171201W001

Communication System: WCDMA; Frequency: 1752.6 MHz; Duty Cycle: 1:1

Medium: H1750_1125 Medium parameters used: $f = 1753$ MHz; $\sigma = 1.416$ S/m; $\epsilon_r = 41.325$; $\rho = 1000$ kg/m³

Ambient Temperature : 23.2 °C ; Liquid Temperature : 22.5 °C

DASY5 Configuration:

- Probe: EX3DV4 - SN3873; ConvF(8.62, 8.62, 8.62); Calibrated: 2017/08/25;
- Sensor-Surface: 1.4mm (Mechanical Surface Detection)
- Electronics: DAE4 Sn1341; Calibrated: 2017/08/23
- Phantom: Front Phantom with CRP v5.0; Type: QD000P40CD; Serial: TP:1695
- Measurement SW: DASY52, Version 52.8 (8); SEMCAD X Version 14.6.10 (7331)

- **Area Scan (71x121x1):** Interpolated grid: dx=1.500 mm, dy=1.500 mm

Maximum value of SAR (interpolated) = 0.845 W/kg

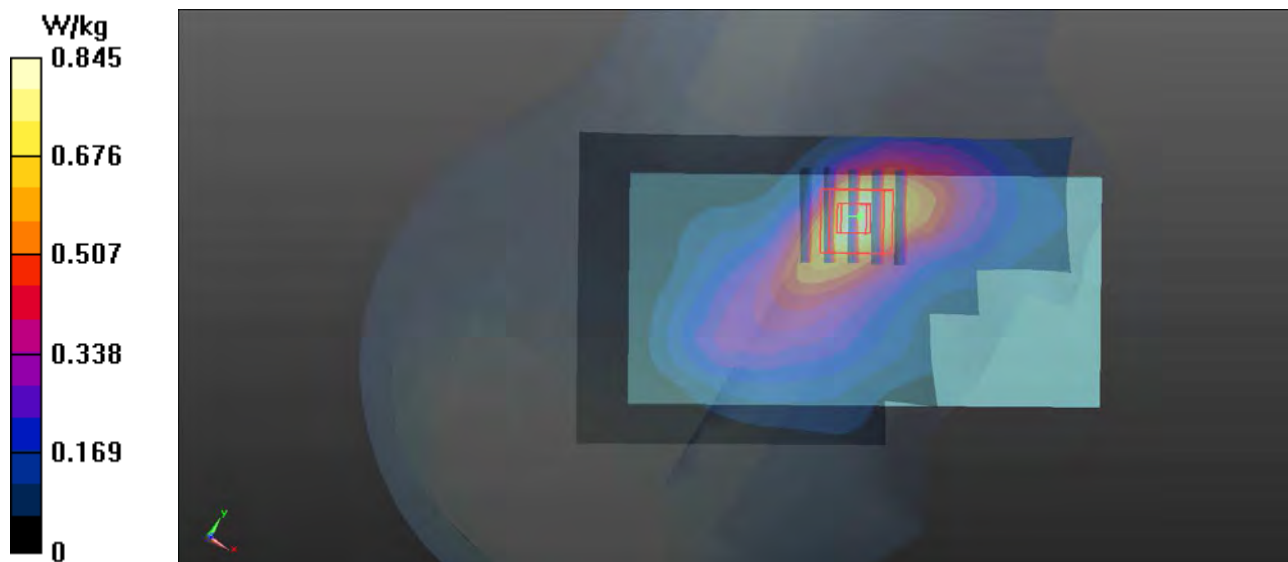
- **Zoom Scan (5x5x7)/Cube 0:** Measurement grid: dx=8mm, dy=8mm, dz=5mm

Reference Value = 5.548 V/m; Power Drift = -0.01 dB

Peak SAR (extrapolated) = 0.874 W/kg

SAR(1 g) = 0.472 W/kg; SAR(10 g) = 0.286 W/kg

Maximum value of SAR (measured) = 0.778 W/kg



P05 WCDMA V_RMC12.2K_Left Cheek_Ch4132

DUT: 171201W001

Communication System: WCDMA; Frequency: 826.4 MHz; Duty Cycle: 1:1

Medium: H835_1122 Medium parameters used: $f = 826.4$ MHz; $\sigma = 0.91$ S/m; $\epsilon_r = 43.116$; $\rho = 1000$ kg/m³

Ambient Temperature : 23.4 °C; Liquid Temperature : 22.2 °C

DASY5 Configuration:

- Probe: EX3DV4 - SN3873; ConvF(9.74, 9.74, 9.74); Calibrated: 2017/08/25;
- Sensor-Surface: 1.4mm (Mechanical Surface Detection)
- Electronics: DAE4 Sn1341; Calibrated: 2017/08/23
- Phantom: Left Phantom with CRP v5.0; Type: QD000P40CD; Serial: TP:1722
- Measurement SW: DASY52, Version 52.8 (8); SEMCAD X Version 14.6.10 (7331)

- **Area Scan (71x121x1)**: Interpolated grid: dx=1.500 mm, dy=1.500 mm

Maximum value of SAR (interpolated) = 0.331 W/kg

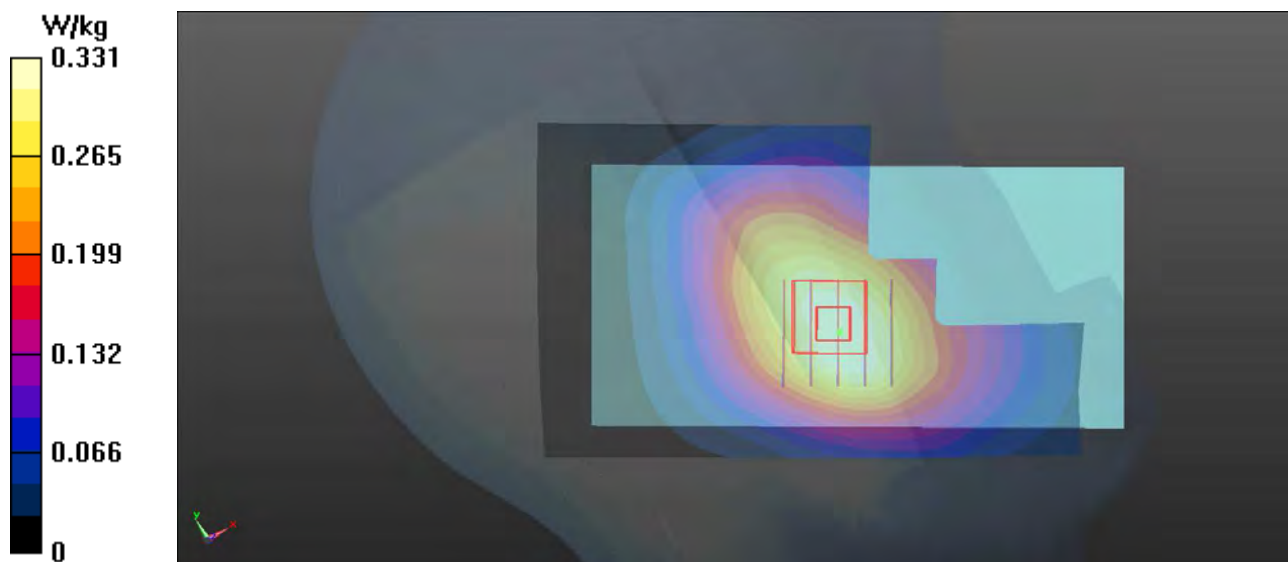
- **Zoom Scan (5x5x7)/Cube 0**: Measurement grid: dx=8mm, dy=8mm, dz=5mm

Reference Value = 5.363 V/m; Power Drift = -0.02 dB

Peak SAR (extrapolated) = 0.346 W/kg

SAR(1 g) = 0.294 W/kg; SAR(10 g) = 0.234 W/kg

Maximum value of SAR (measured) = 0.331 W/kg



P06 LTE 2_QPSK20M_Right Cheek_Ch19100_1RB_OS0

DUT: 171201W001

Communication System: LTE; Frequency: 1900 MHz; Duty Cycle: 1:1

Medium: H1900_1126 Medium parameters used: $f = 1860$ MHz; $\sigma = 1.345$ S/m; $\epsilon_r = 39.962$; $\rho = 1000$ kg/m³

Ambient Temperature : 23.2 °C ; Liquid Temperature : 22.5 °C

DASY5 Configuration:

- Probe: EX3DV4 - SN3873; ConvF(8.37, 8.37, 8.37); Calibrated: 2017/08/25;
- Sensor-Surface: 1.4mm (Mechanical Surface Detection)
- Electronics: DAE4 Sn1341; Calibrated: 2017/08/23
- Phantom: Front Phantom with CRP v5.0; Type: QD000P40CD; Serial: TP:1695
- Measurement SW: DASY52, Version 52.8 (8); SEMCAD X Version 14.6.10 (7331)

- **Area Scan (71x121x1):** Interpolated grid: dx=1.500 mm, dy=1.500 mm

Maximum value of SAR (interpolated) = 0.817 W/kg

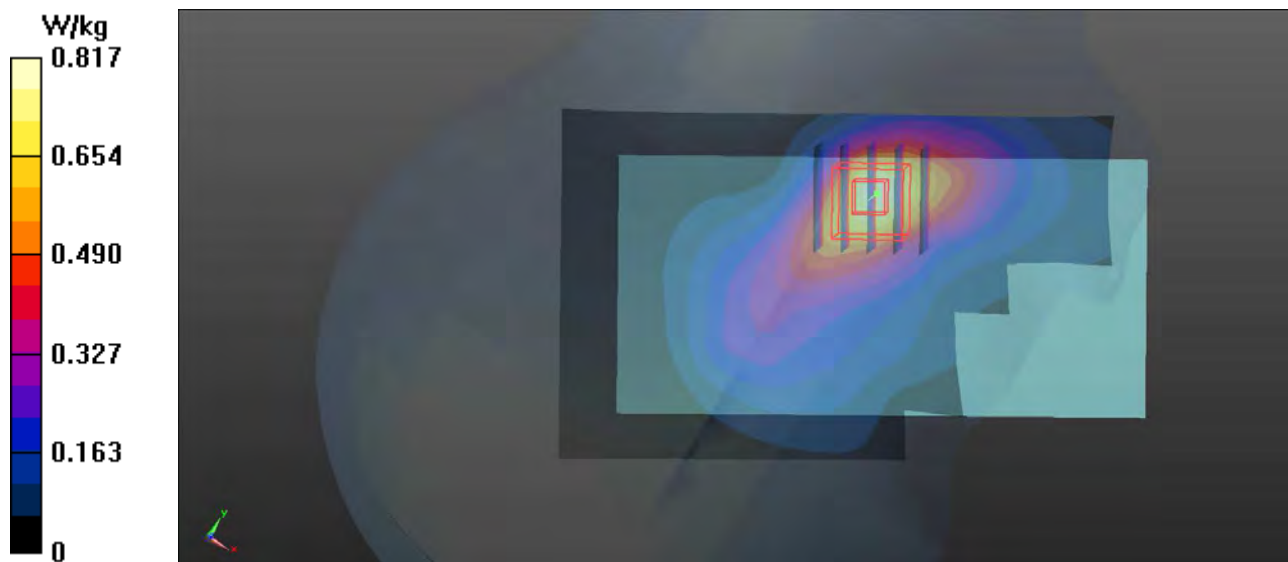
- **Zoom Scan (5x5x7)/Cube 0:** Measurement grid: dx=8mm, dy=8mm, dz=5mm

Reference Value = 4.541 V/m; Power Drift = 0.07 dB

Peak SAR (extrapolated) = 0.868 W/kg

SAR(1 g) = 0.577 W/kg; SAR(10 g) = 0.361 W/kg

Maximum value of SAR (measured) = 0.769 W/kg



P07 LTE 4_QPSK20M_Right Cheek_Ch20050_1RB_OS0

DUT: 171201W001

Communication System: LTE; Frequency: 1720 MHz; Duty Cycle: 1:1

Medium: H1750_1125 Medium parameters used: $f = 1720$ MHz; $\sigma = 1.384$ S/m; $\epsilon_r = 41.469$; $\rho = 1000$ kg/m³

Ambient Temperature : 23.1 °C; Liquid Temperature : 22.3 °C

DASY5 Configuration:

- Probe: EX3DV4 - SN3873; ConvF(8.62, 8.62, 8.62); Calibrated: 2017/08/25;
- Sensor-Surface: 1.4mm (Mechanical Surface Detection)
- Electronics: DAE4 Sn1341; Calibrated: 2017/08/23
- Phantom: Front Phantom with CRP v5.0; Type: QD000P40CD; Serial: TP:1695
- Measurement SW: DASY52, Version 52.8 (8); SEMCAD X Version 14.6.10 (7331)

- **Area Scan (71x121x1):** Interpolated grid: dx=1.500 mm, dy=1.500 mm

Maximum value of SAR (interpolated) = 0.728 W/kg

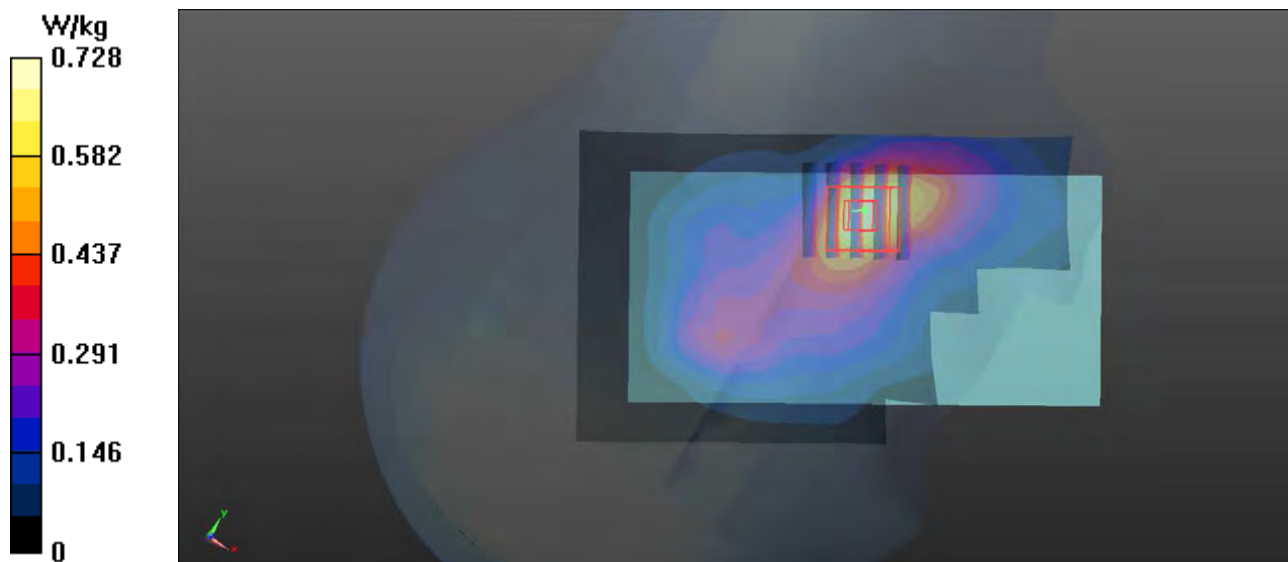
- **Zoom Scan (5x5x7)/Cube 0:** Measurement grid: dx=8mm, dy=8mm, dz=5mm

Reference Value = 6.433 V/m; Power Drift = -0.05 dB

Peak SAR (extrapolated) = 0.766 W/kg

SAR(1 g) = 0.498 W/kg; SAR(10 g) = 0.318 W/kg

Maximum value of SAR (measured) = 0.689 W/kg



P08 LTE 5_QPSK10M_Left Cheek_Ch20600_1RB_OS0

DUT: 171201W001

Communication System: LTE; Frequency: 844 MHz; Duty Cycle: 1:1

Medium: H835_1122 Medium parameters used: $f = 836.5$ MHz; $\sigma = 0.922$ S/m; $\epsilon_r = 42.991$; $\rho = 1000$ kg/m³

Ambient Temperature : 23.4 °C; Liquid Temperature : 22.2 °C

DASY5 Configuration:

- Probe: EX3DV4 - SN3873; ConvF(9.74, 9.74, 9.74); Calibrated: 2017/08/25;
- Sensor-Surface: 1.4mm (Mechanical Surface Detection)
- Electronics: DAE4 Sn1341; Calibrated: 2017/08/23
- Phantom: Left Phantom with CRP v5.0; Type: QD000P40CD; Serial: TP:1722
- Measurement SW: DASY52, Version 52.8 (8); SEMCAD X Version 14.6.10 (7331)

- **Area Scan (71x121x1):** Interpolated grid: dx=1.500 mm, dy=1.500 mm

Maximum value of SAR (interpolated) = 0.302 W/kg

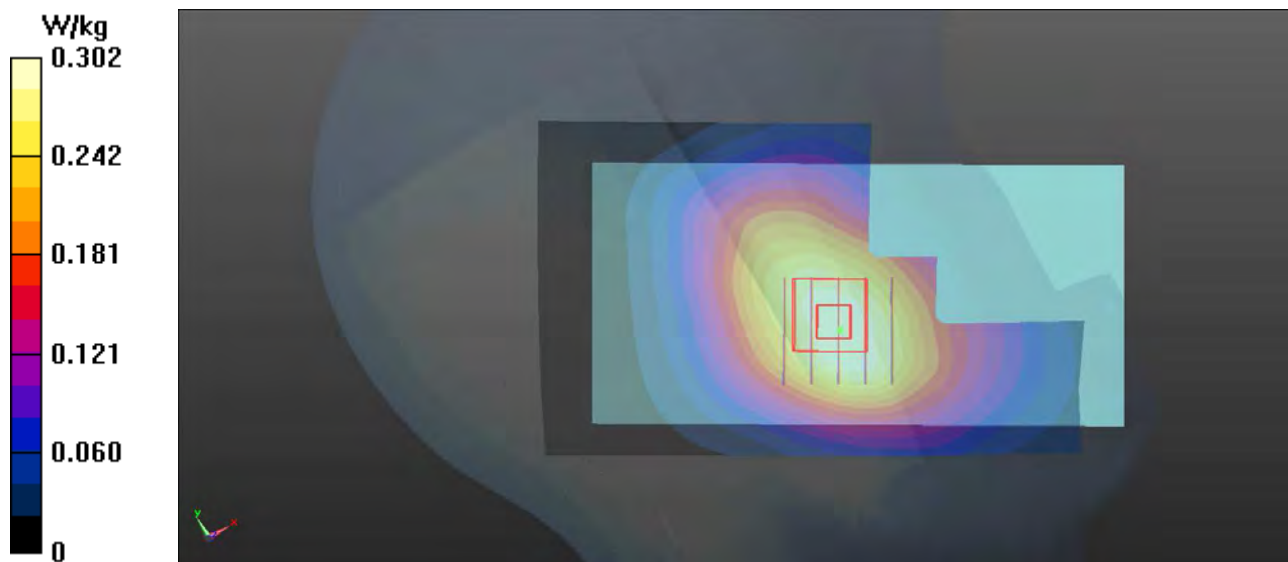
- **Zoom Scan (5x5x7)/Cube 0:** Measurement grid: dx=8mm, dy=8mm, dz=5mm

Reference Value = 5.366 V/m; Power Drift = -0.03 dB

Peak SAR (extrapolated) = 0.329 W/kg

SAR(1 g) = 0.251 W/kg; SAR(10 g) = 0.189 W/kg

Maximum value of SAR (measured) = 0.310 W/kg



P09 LTE 7_QPSK20M_Left Cheek_Ch21350_1RB_OS0

DUT: 171201W001

Communication System: LTE; Frequency: 2560 MHz; Duty Cycle: 1:1

Medium: H2600_1204 Medium parameters used: $f = 2560$ MHz; $\sigma = 1.947$ S/m; $\epsilon_r = 37.786$; $\rho = 1000$ kg/m³

Ambient Temperature : 22.9 °C; Liquid Temperature : 21.9 °C

DASY5 Configuration:

- Probe: EX3DV4 - SN3873; ConvF(7.17, 7.17, 7.17); Calibrated: 2017/08/25;
- Sensor-Surface: 1.4mm (Mechanical Surface Detection)
- Electronics: DAE4 Sn1341; Calibrated: 2017/08/23
- Phantom: Front Phantom with CRP v5.0; Type: QD000P40CD; Serial: TP:1695
- Measurement SW: DASY52, Version 52.8 (8); SEMCAD X Version 14.6.10 (7331)

- **Area Scan (71x121x1):** Interpolated grid: dx=1.500 mm, dy=1.500 mm

Maximum value of SAR (interpolated) = 0.494 W/kg

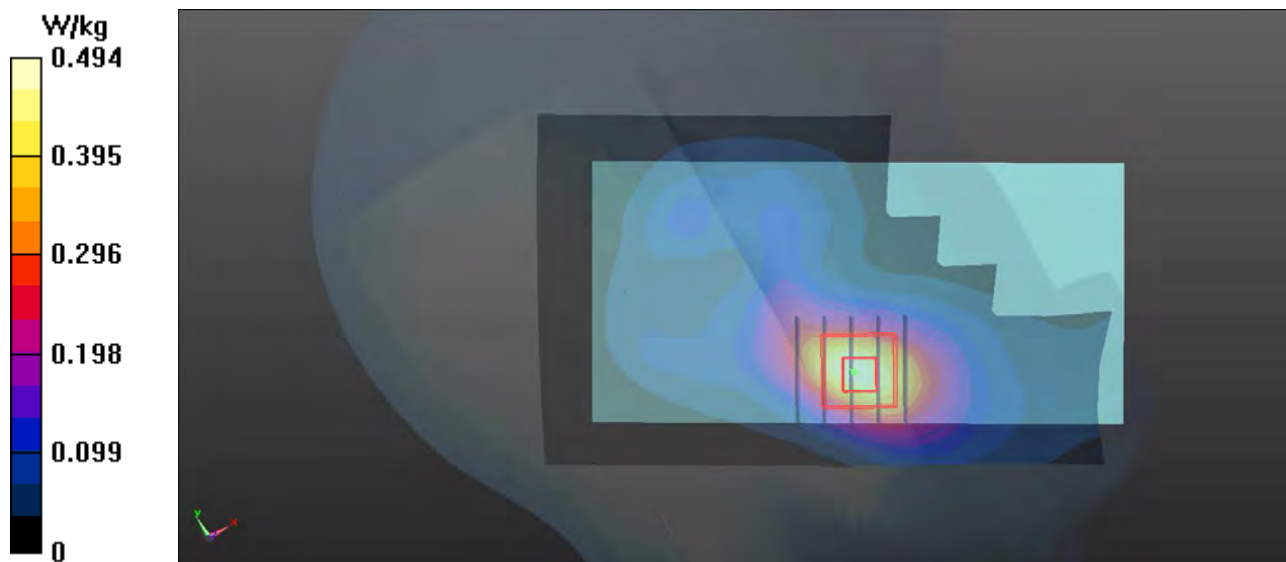
- **Zoom Scan (5x5x7)/Cube 0:** Measurement grid: dx=8mm, dy=8mm, dz=5mm

Reference Value = 4.394 V/m; Power Drift = -0.11 dB

Peak SAR (extrapolated) = 0.611 W/kg

SAR(1 g) = 0.319 W/kg; SAR(10 g) = 0.162 W/kg

Maximum value of SAR (measured) = 0.499 W/kg



P10 LTE 12_QPSK10M_Right Cheek_Ch23130_1RB_OS0

DUT: 171201W001

Communication System: LTE; Frequency: 711 MHz; Duty Cycle: 1:1

Medium: H750_1121 Medium parameters used: $f = 711 \text{ MHz}$; $\sigma = 0.875 \text{ S/m}$; $\epsilon_r = 40.987$; $\rho = 1000 \text{ kg/m}^3$

Ambient Temperature : 23.3 °C ; Liquid Temperature : 22.4 °C

DASY5 Configuration:

- Probe: EX3DV4 - SN3873; ConvF(10.08, 10.08, 10.08); Calibrated: 2017/08/25;
- Sensor-Surface: 1.4mm (Mechanical Surface Detection)
- Electronics: DAE4 Sn1341; Calibrated: 2017/08/23
- Phantom: Left Phantom with CRP v5.0; Type: QD000P40CD; Serial: TP:1722
- Measurement SW: DASY52, Version 52.8 (8); SEMCAD X Version 14.6.10 (7331)

- **Area Scan (71x121x1):** Interpolated grid: $dx=1.500 \text{ mm}$, $dy=1.500 \text{ mm}$

Maximum value of SAR (interpolated) = 0.228 W/kg

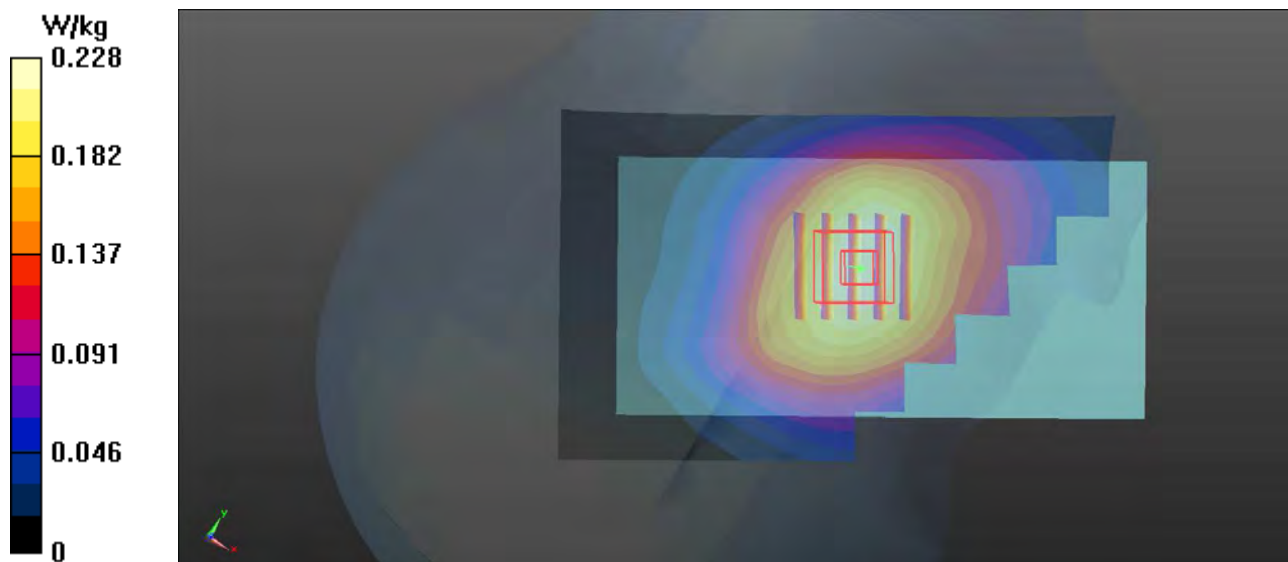
- **Zoom Scan (5x5x7)/Cube 0:** Measurement grid: $dx=8\text{mm}$, $dy=8\text{mm}$, $dz=5\text{mm}$

Reference Value = 4.033 V/m; Power Drift = 0.05 dB

Peak SAR (extrapolated) = 0.235 W/kg

SAR(1 g) = 0.198 W/kg; SAR(10 g) = 0.162W/kg

Maximum value of SAR (measured) = 0.229 W/kg



P11 LTE 13_QPSK10M_Left Cheek_Ch23230_1RB_OS0

DUT: 171201W001

Communication System: LTE; Frequency: 782 MHz; Duty Cycle: 1:1

Medium: H750_1121 Medium parameters used: $f = 782 \text{ MHz}$; $\sigma = 0.928 \text{ S/m}$; $\epsilon_r = 40.367$; $\rho = 1000 \text{ kg/m}^3$

Ambient Temperature : 23.3 °C ; Liquid Temperature : 22.4 °C

DASY5 Configuration:

- Probe: EX3DV4 - SN3873; ConvF(10.08, 10.08, 10.08); Calibrated: 2017/08/25;
- Sensor-Surface: 1.4mm (Mechanical Surface Detection)
- Electronics: DAE4 Sn1341; Calibrated: 2017/08/23
- Phantom: Left Phantom with CRP v5.0; Type: QD000P40CD; Serial: TP:1722
- Measurement SW: DASY52, Version 52.8 (8); SEMCAD X Version 14.6.10 (7331)

- **Area Scan (71x121x1):** Interpolated grid: $dx=1.500 \text{ mm}$, $dy=1.500 \text{ mm}$

Maximum value of SAR (interpolated) = 0.217 W/kg

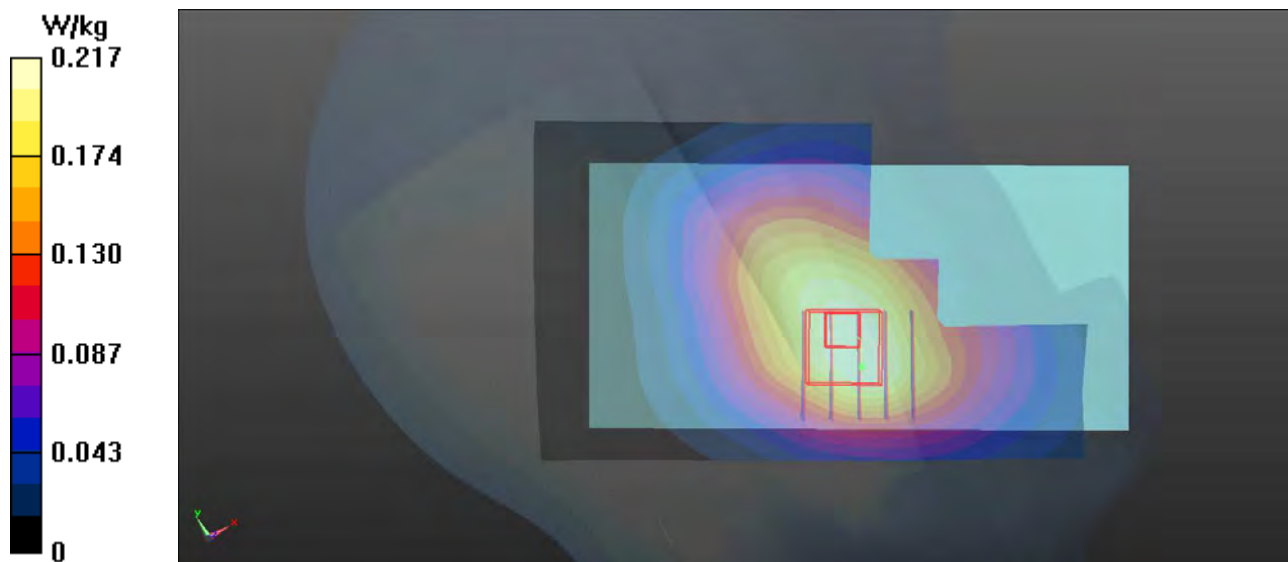
- **Zoom Scan (5x5x7)/Cube 0:** Measurement grid: $dx=8\text{mm}$, $dy=8\text{mm}$, $dz=5\text{mm}$

Reference Value = 3.755 V/m; Power Drift = 0.02 dB

Peak SAR (extrapolated) = 0.229 W/kg

SAR(1 g) = 0.193 W/kg; SAR(10 g) = 0.147 W/kg

Maximum value of SAR (measured) = 0.215 W/kg



P12 LTE 14_QPSK10M_Left Cheek_Ch23330_1RB_OS0

DUT: 171201W001

Communication System: LTE; Frequency: 793 MHz; Duty Cycle: 1:1

Medium: H750_1121 Medium parameters used: $f = 793 \text{ MHz}$; $\sigma = 0.932 \text{ S/m}$; $\epsilon_r = 40.254$; $\rho = 1000 \text{ kg/m}^3$

Ambient Temperature : $23.3 \text{ }^\circ\text{C}$; Liquid Temperature : $22.4 \text{ }^\circ\text{C}$

DASY5 Configuration:

- Probe: EX3DV4 - SN3873; ConvF(10.08, 10.08, 10.08); Calibrated: 2017/08/25;
- Sensor-Surface: 1.4mm (Mechanical Surface Detection)
- Electronics: DAE4 Sn1341; Calibrated: 2017/08/23
- Phantom: Left Phantom with CRP v5.0; Type: QD000P40CD; Serial: TP:1722
- Measurement SW: DASY52, Version 52.8 (8); SEMCAD X Version 14.6.10 (7331)

- **Area Scan (71x121x1):** Interpolated grid: $dx=1.500 \text{ mm}$, $dy=1.500 \text{ mm}$

Maximum value of SAR (interpolated) = 0.239 W/kg

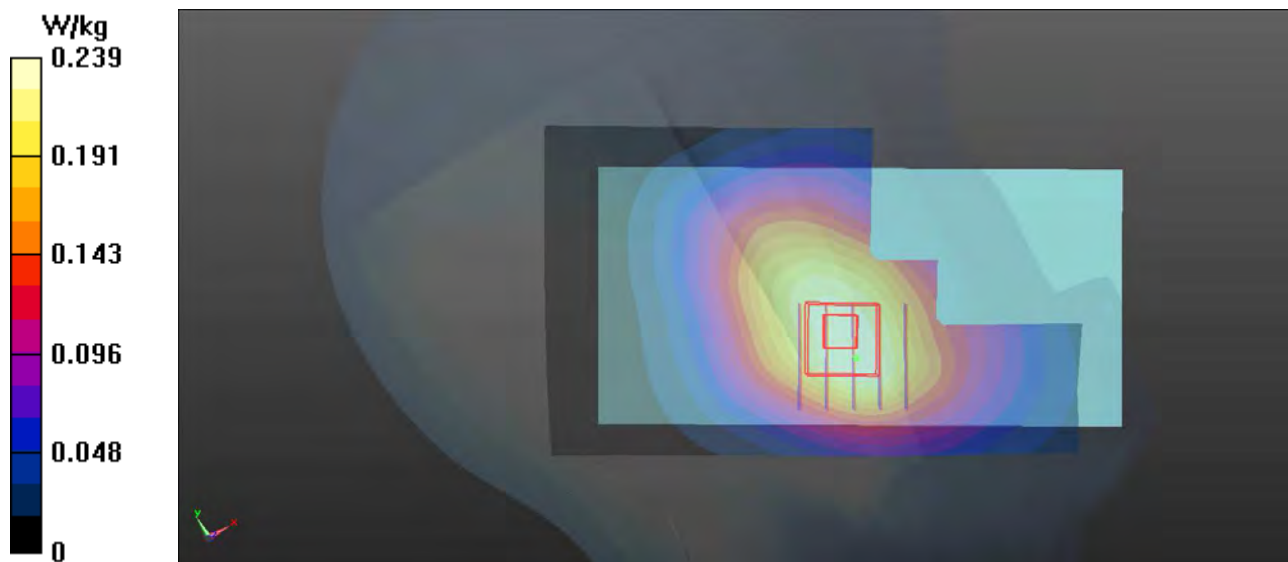
- **Zoom Scan (5x5x7)/Cube 0:** Measurement grid: $dx=8\text{mm}$, $dy=8\text{mm}$, $dz=5\text{mm}$

Reference Value = 3.896 V/m ; Power Drift = -0.09 dB

Peak SAR (extrapolated) = 0.256 W/kg

SAR(1 g) = 0.213 W/kg ; SAR(10 g) = 0.165 W/kg

Maximum value of SAR (measured) = 0.239 W/kg



P13 LTE 25_QPSK20M_Right Cheek_Ch26590_1RB_OS0

DUT: 171201W001

Communication System: LTE; Frequency: 1905 MHz; Duty Cycle: 1:1

Medium: H1900_1126 Medium parameters use: $f = 1882.5$ MHz; $\sigma = 1.366$ S/m; $\epsilon_r = 39.868$; $\rho = 1000$ kg/m³

Ambient Temperature : 23.2 °C ; Liquid Temperature : 22.5 °C

DASY5 Configuration:

- Probe: EX3DV4 - SN3873; ConvF(8.37, 8.37, 8.37); Calibrated: 2017/08/25;
- Sensor-Surface: 1.4mm (Mechanical Surface Detection)
- Electronics: DAE4 Sn1341; Calibrated: 2017/08/23
- Phantom: Front Phantom with CRP v5.0; Type: QD000P40CD; Serial: TP:1695
- Measurement SW: DASY52, Version 52.8 (8); SEMCAD X Version 14.6.10 (7331)

- **Area Scan (71x121x1):** Interpolated grid: dx=1.500 mm, dy=1.500 mm

Maximum value of SAR (interpolated) = 0.765 W/kg

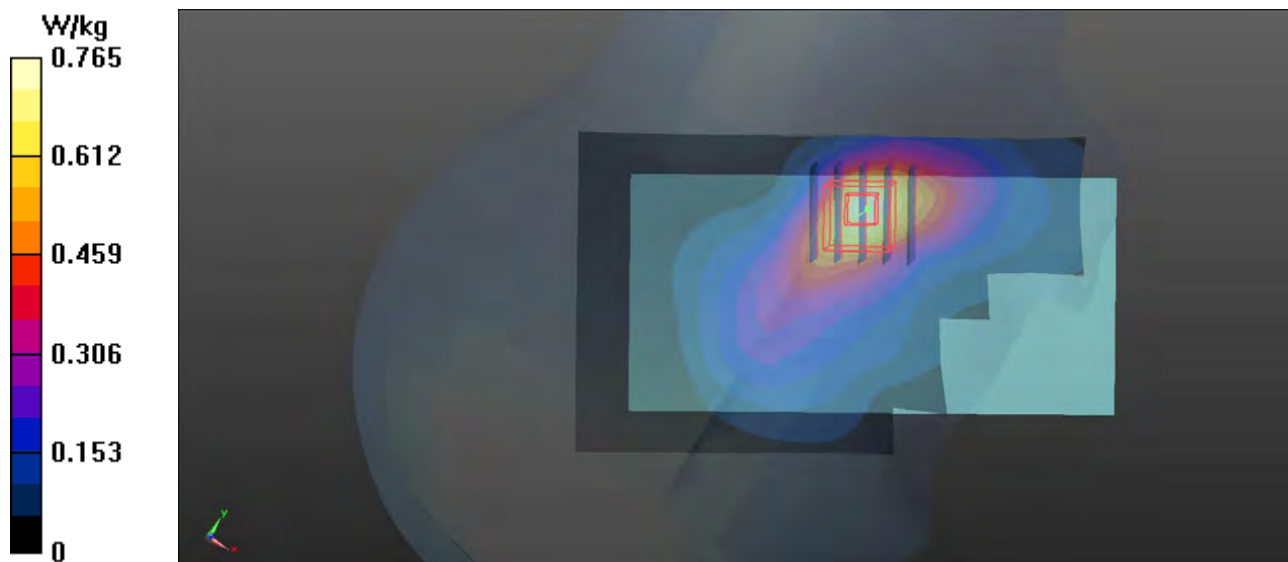
- **Zoom Scan (5x5x7)/Cube 0:** Measurement grid: dx=8mm, dy=8mm, dz=5mm

Reference Value = 4.392 V/m; Power Drift = 0.12 dB

Peak SAR (extrapolated) = 0.820 W/kg

SAR(1 g) = 0.540 W/kg; SAR(10 g) = 0.335 W/kg

Maximum value of SAR (measured) = 0.723 W/kg



P14 LTE 26_QPSK15M_Left Cheek_Ch26865_1RB_OS0

DUT: 171201W001

Communication System: LTE; Frequency: 831.5 MHz; Duty Cycle: 1:1

Medium: H835_1122 Medium parameters used: $f = 831.5$ MHz; $\sigma = 0.916$ S/m; $\epsilon_r = 43.047$; $\rho = 1000$ kg/m³

Ambient Temperature : 23.4 °C; Liquid Temperature : 22.2 °C

DASY5 Configuration:

- Probe: EX3DV4 - SN3873; ConvF(9.74, 9.74, 9.74); Calibrated: 2017/08/25;
- Sensor-Surface: 1.4mm (Mechanical Surface Detection)
- Electronics: DAE4 Sn1341; Calibrated: 2017/08/23
- Phantom: Left Phantom with CRP v5.0; Type: QD000P40CD; Serial: TP:1722
- Measurement SW: DASY52, Version 52.8 (8); SEMCAD X Version 14.6.10 (7331)

- **Area Scan (71x121x1):** Interpolated grid: dx=1.500 mm, dy=1.500 mm

Maximum value of SAR (interpolated) = 0.385 W/kg

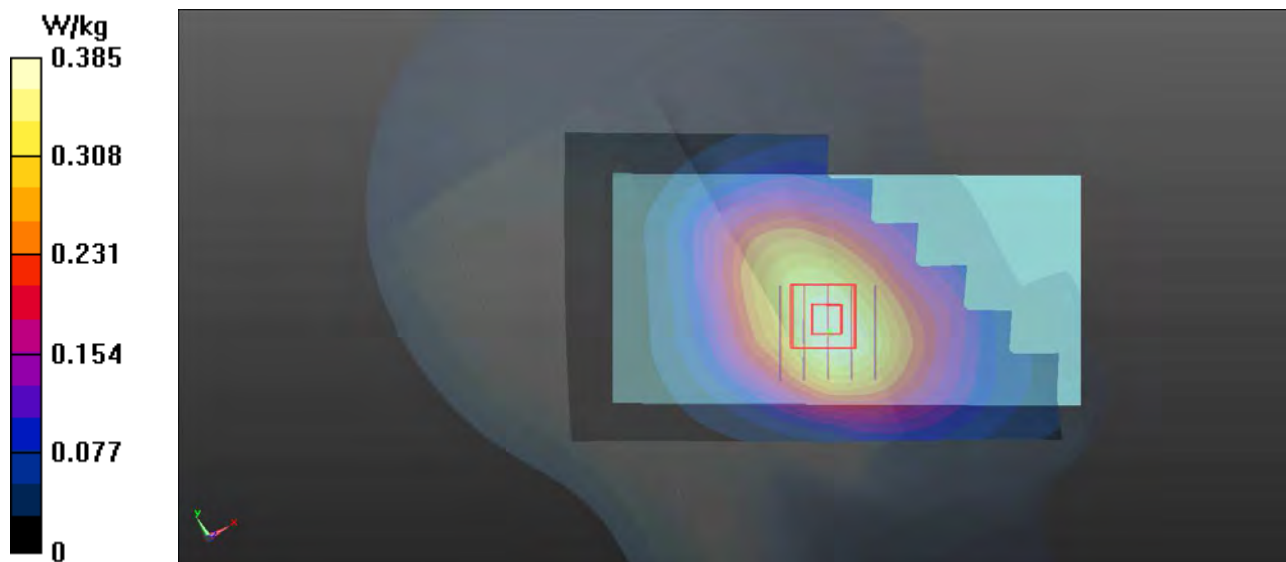
- **Zoom Scan (5x5x7)/Cube 0:** Measurement grid: dx=8mm, dy=8mm, dz=5mm

Reference Value = 5.017 V/m; Power Drift = 0.09 dB

Peak SAR (extrapolated) = 0.401 W/kg

SAR(1 g) = 0.307 W/kg; SAR(10 g) = 0.239 W/kg

Maximum value of SAR (measured) = 0.378 W/kg



P15 LTE 30_QPSK10M_Left Cheek_Ch27710_1RB_OS0

DUT: 171201W001

Communication System: LTE; Frequency: 2310 MHz; Duty Cycle: 1:1

Medium: H2300_1201 Medium parameters used: $f = 2310$ MHz; $\sigma = 1.647$ S/m; $\epsilon_r = 38.82$; $\rho = 1000$ kg/m³

Ambient Temperature : 22.9 °C ; Liquid Temperature : 21.9 °C

DASY5 Configuration:

- Probe: EX3DV4 - SN3873; ConvF(7.85, 7.85, 7.85); Calibrated: 2017/08/25;
- Sensor-Surface: 1.4mm (Mechanical Surface Detection)
- Electronics: DAE4 Sn1341; Calibrated: 2017/08/23
- Phantom: Front Phantom with CRP v5.0; Type: QD000P40CD; Serial: TP:1695
- Measurement SW: DASY52, Version 52.8 (8); SEMCAD X Version 14.6.10 (7331)

- **Area Scan (91x151x1):** Interpolated grid: dx=1.200 mm, dy=1.200 mm

Maximum value of SAR (interpolated) = 0.613 W/kg

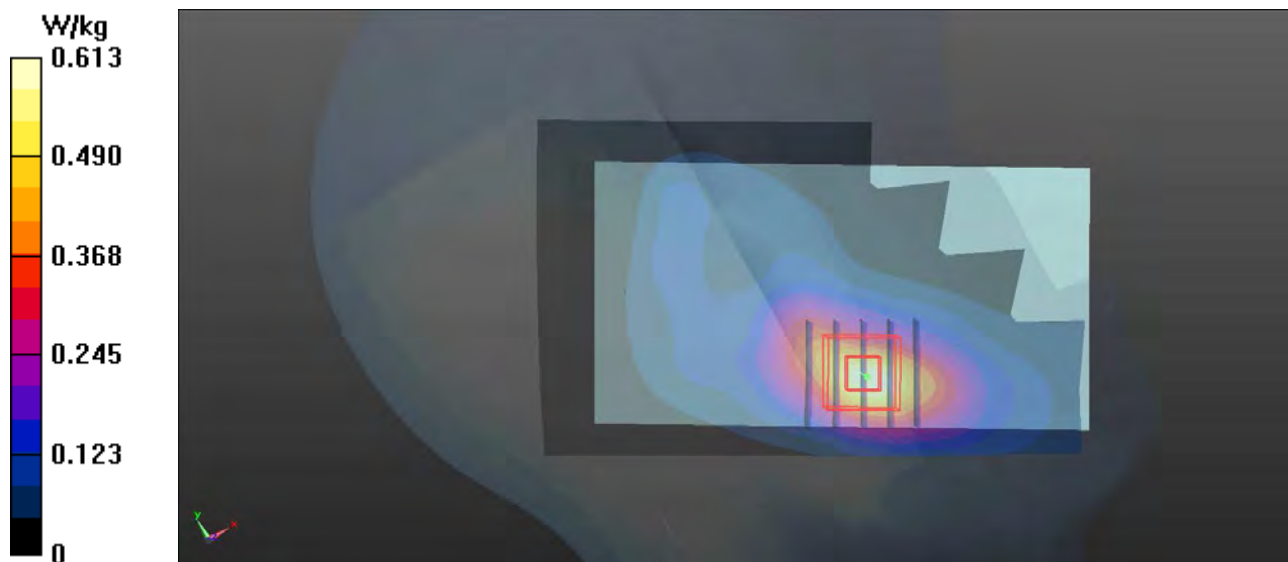
- **Zoom Scan (5x5x7)/Cube 0:** Measurement grid: dx=8mm, dy=8mm, dz=5mm

Reference Value = 5.283 V/m; Power Drift = 0.01 dB

Peak SAR (extrapolated) = 0.721 W/kg

SAR(1 g) = 0.403 W/kg; SAR(10 g) = 0.216 W/kg

Maximum value of SAR (measured) = 0.608 W/kg



P16 LTE 38_QPSK20M_Left Cheek_Ch38150_1RB_OS0

DUT: 171201W001

Communication System: LTE; Frequency: 2580 MHz; Duty Cycle: 1:1.58

Medium: H2600_1204 Medium parameters used: $f = 2580$ MHz; $\sigma = 1.967$ S/m; $\epsilon_r = 37.715$; $\rho = 1000$ kg/m³

Ambient Temperature : 22.9 °C ; Liquid Temperature : 21.7 °C

DASY5 Configuration:

- Probe: EX3DV4 - SN3873; ConvF(7.17, 7.17, 7.17); Calibrated: 2017/08/25;
- Sensor-Surface: 1.4mm (Mechanical Surface Detection)
- Electronics: DAE4 Sn1341; Calibrated: 2017/08/23
- Phantom: Front Phantom with CRP v5.0; Type: QD000P40CD; Serial: TP:1695
- Measurement SW: DASY52, Version 52.8 (8); SEMCAD X Version 14.6.10 (7331)

- **Area Scan (91x151x1):** Interpolated grid: dx=1.200 mm, dy=1.200 mm

Maximum value of SAR (interpolated) = 0.275 W/kg

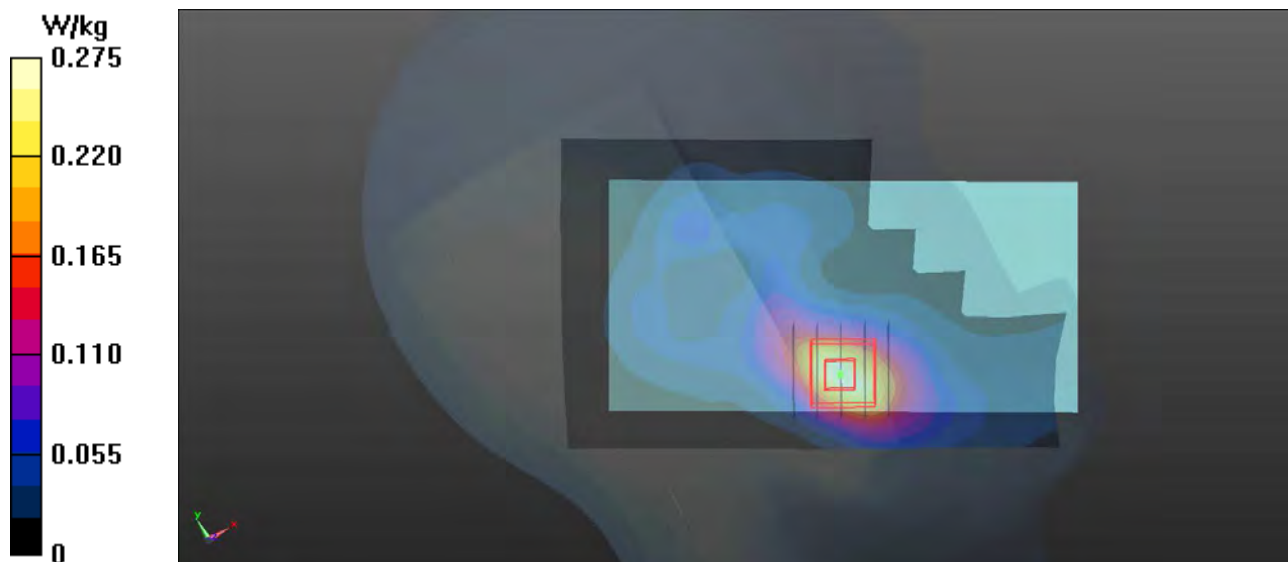
- **Zoom Scan (5x5x7)/Cube 0:** Measurement grid: dx=8mm, dy=8mm, dz=5mm

Reference Value = 3.583 V/m; Power Drift = 0.02 dB

Peak SAR (extrapolated) = 0.361 W/kg

SAR(1 g) = 0.182 W/kg; SAR(10 g) = 0.091 W/kg

Maximum value of SAR (measured) = 0.295 W/kg



P17 LTE 40_QPSK10M_Left Cheek_Ch38750_1RB_OS0

DUT: 171201W001

Communication System: LTE; Frequency: 2310 MHz; Duty Cycle: 1:1.58

Medium: H2300_1201 Medium parameters used: $f = 2310$ MHz; $\sigma = 1.647$ S/m; $\epsilon_r = 38.82$; $\rho = 1000$ kg/m³

Ambient Temperature : 22.9 °C ; Liquid Temperature : 21.9 °C

DASY5 Configuration:

- Probe: EX3DV4 - SN3873; ConvF(7.85, 7.85, 7.85); Calibrated: 2017/08/25;
- Sensor-Surface: 1.4mm (Mechanical Surface Detection)
- Electronics: DAE4 Sn1341; Calibrated: 2017/08/23
- Phantom: Front Phantom with CRP v5.0; Type: QD000P40CD; Serial: TP:1695
- Measurement SW: DASY52, Version 52.8 (8); SEMCAD X Version 14.6.10 (7331)

- **Area Scan (91x151x1):** Interpolated grid: dx=1.200 mm, dy=1.200 mm

Maximum value of SAR (interpolated) = 0.615 W/kg

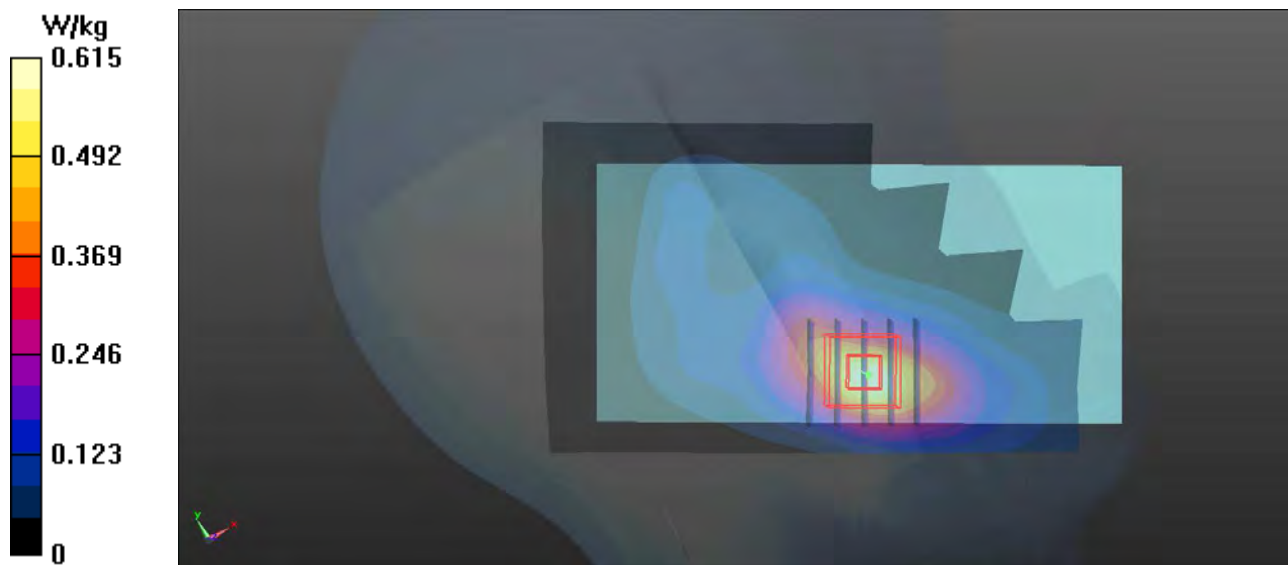
- **Zoom Scan (5x5x7)/Cube 0:** Measurement grid: dx=8mm, dy=8mm, dz=5mm

Reference Value = 5.284 V/m; Power Drift = 0.00 dB

Peak SAR (extrapolated) = 0.723 W/kg

SAR(1 g) = 0.334 W/kg; SAR(10 g) = 0.186 W/kg

Maximum value of SAR (measured) = 0.610 W/kg



P18 LTE 41_QPSK20M_Left Cheek_Ch41490_1RB_OS0

DUT: 171201W001

Communication System: LTE; Frequency: 2680 MHz; Duty Cycle: 1:1.58

Medium: H2600_1204 Medium parameters used: $f = 2620$ MHz; $\sigma = 2.007$ S/m; $\epsilon_r = 37.501$; $\rho = 1000$ kg/m³

Ambient Temperature : 22.9 °C ; Liquid Temperature : 21.7 °C

DASY5 Configuration:

- Probe: EX3DV4 - SN3873; ConvF(7.17, 7.17, 7.17); Calibrated: 2017/08/25;
- Sensor-Surface: 1.4mm (Mechanical Surface Detection)
- Electronics: DAE4 Sn1341; Calibrated: 2017/08/23
- Phantom: Front Phantom with CRP v5.0; Type: QD000P40CD; Serial: TP:1695
- Measurement SW: DASY52, Version 52.8 (8); SEMCAD X Version 14.6.10 (7331)

- **Area Scan (91x121x1):** Interpolated grid: dx=1.200 mm, dy=1.200 mm

Maximum value of SAR (interpolated) = 0.304 W/kg

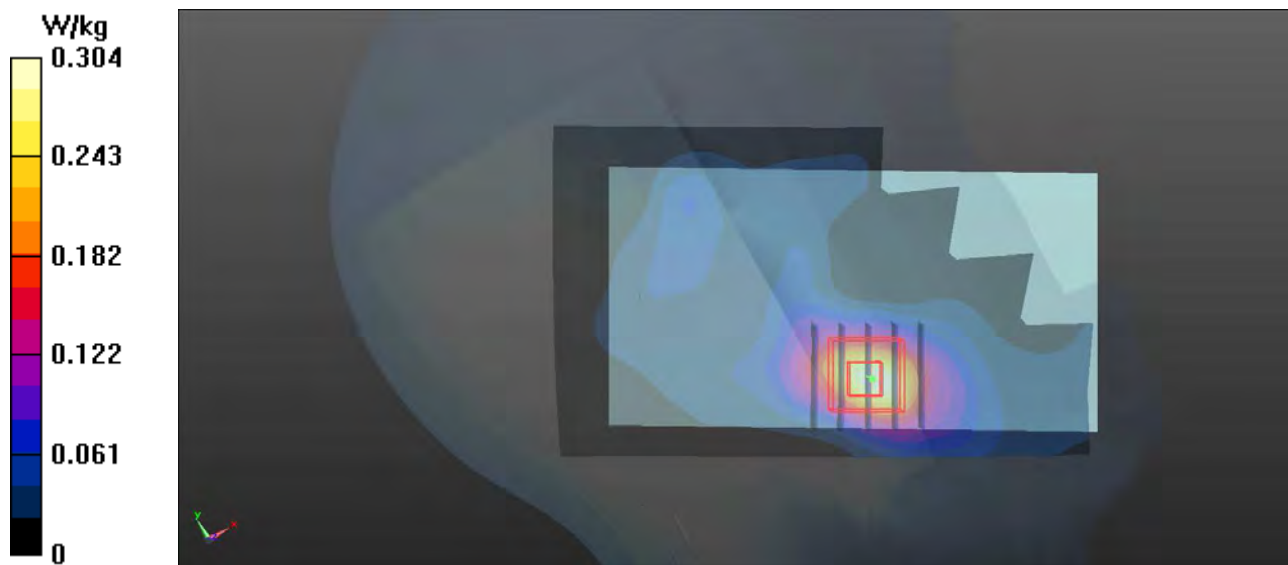
- **Zoom Scan (5x5x7)/Cube 0:** Measurement grid: dx=8mm, dy=8mm, dz=5mm

Reference Value = 3.959 V/m; Power Drift = 0.01 dB

Peak SAR (extrapolated) = 0.373 W/kg

SAR(1 g) = 0.185 W/kg; SAR(10 g) = 0.089 W/kg

Maximum value of SAR (measured) = 0.300 W/kg



P19 LTE 66_QPSK20M_Right Cheek_Ch132572_1RB_OS0

DUT: 171201W001

Communication System: LTE; Frequency: 1770 MHz; Duty Cycle: 1:1

Medium: H1750_1125 Medium parameters used: $f = 1770$ MHz; $\sigma = 1.433$ S/m; $\epsilon_r = 41.248$; $\rho = 1000$ kg/m³

Ambient Temperature : 23.1 °C ; Liquid Temperature : 22.3 °C

DASY5 Configuration:

- Probe: EX3DV4 - SN3873; ConvF(8.62, 8.62, 8.62); Calibrated: 2017/08/25;
- Sensor-Surface: 1.4mm (Mechanical Surface Detection)
- Electronics: DAE4 Sn1341; Calibrated: 2017/08/23
- Phantom: Front Phantom with CRP v5.0; Type: QD000P40CD; Serial: TP:1695
- Measurement SW: DASY52, Version 52.8 (8); SEMCAD X Version 14.6.10 (7331)

- **Area Scan (71x121x1):** Interpolated grid: dx=1.500 mm, dy=1.500 mm

Maximum value of SAR (interpolated) = 0.793 W/kg

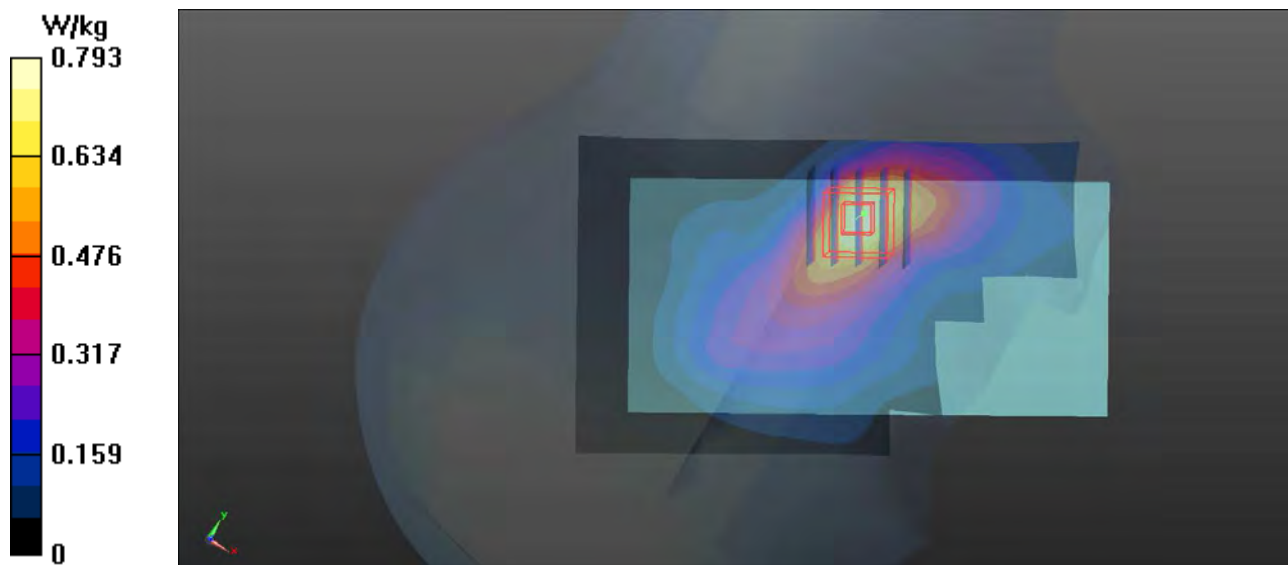
- **Zoom Scan (5x5x7)/Cube 0:** Measurement grid: dx=8mm, dy=8mm, dz=5mm

Reference Value = 4.987 V/m; Power Drift = 0.08 dB

Peak SAR (extrapolated) = 0.835 W/kg

SAR(1 g) = 0.516 W/kg; SAR(10 g) = 0.329 W/kg

Maximum value of SAR (measured) = 0.741 W/kg



P20 802.11b_Right Cheek_Ch1

DUT: 171201W001

Communication System: 802.11b; Frequency: 2412 MHz; Duty Cycle: 1:1

Medium: H2450_1203 Medium parameters used: $f = 2412$ MHz; $\sigma = 1.729$ S/m; $\epsilon_r = 40.353$; $\rho = 1000$ kg/m³

Ambient Temperature : 22.7 °C; Liquid Temperature : 21.8 °C

DASY5 Configuration:

- Probe: EX3DV4 - SN3873; ConvF(7.36, 7.36, 7.36); Calibrated: 2017/08/25;
- Sensor-Surface: 1.4mm (Mechanical Surface Detection)
- Electronics: DAE4 Sn1341; Calibrated: 2017/08/23
- Phantom: Front Phantom with CRP v5.0; Type: QD000P40CD; Serial: TP:1695
- Measurement SW: DASY52, Version 52.8 (8); SEMCAD X Version 14.6.10 (7331)

- **Area Scan (91x151x1):** Interpolated grid: dx=1.200 mm, dy=1.200 mm

Maximum value of SAR (interpolated) = 1.06 W/kg

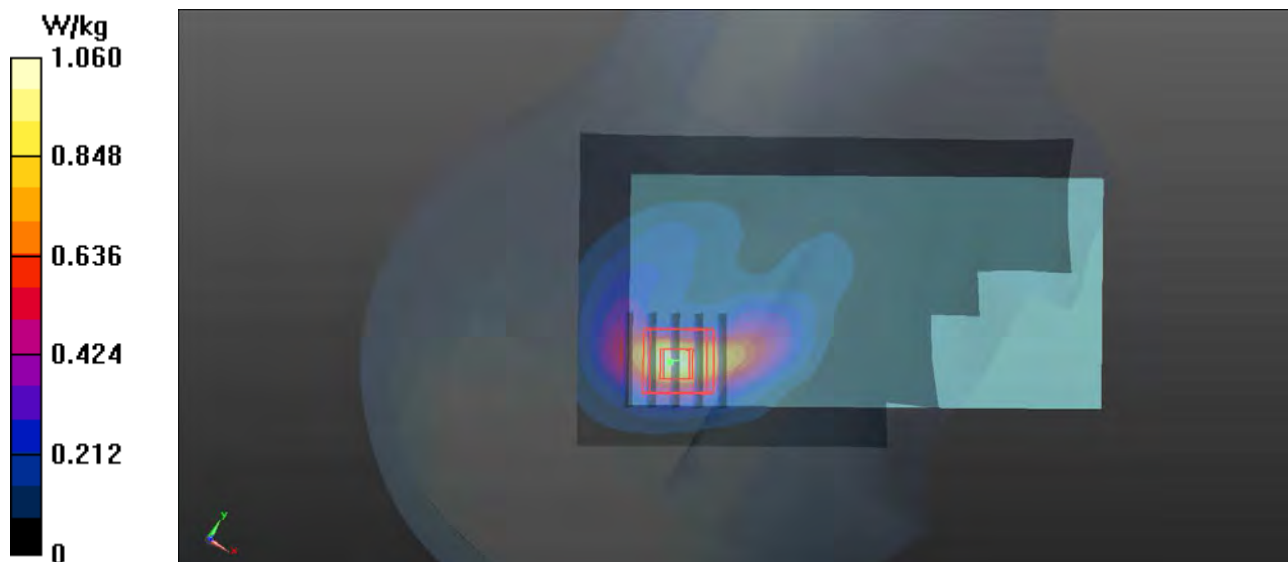
- **Zoom Scan (5x5x7)/Cube 0:** Measurement grid: dx=8mm, dy=8mm, dz=5mm

Reference Value = 9.439 V/m; Power Drift = 0.13 dB

Peak SAR (extrapolated) = 1.37 W/kg

SAR(1 g) = 0.621 W/kg; SAR(10 g) = 0.286 W/kg

Maximum value of SAR (measured) = 1.08 W/kg



P21 802.11a_Right Cheek_Ch48

DUT: 171201W001

Communication System: 802.11a; Frequency: 5240 MHz; Duty Cycle: 1:1

Medium: H5G_1206 Medium parameters used: $f = 5240$ MHz; $\sigma = 4.73$ S/m; $\epsilon_r = 36.881$; $\rho = 1000$ kg/m³

Ambient Temperature : 23.5 °C ; Liquid Temperature : 22.2 °C

DASY5 Configuration:

- Probe: EX3DV4 - SN3873; ConvF(5.04, 5.04, 5.04); Calibrated: 2017/08/25;
- Sensor-Surface: 1.4mm (Mechanical Surface Detection)
- Electronics: DAE4 Sn1341; Calibrated: 2017/08/23
- Phantom: Left Phantom with CRP v5.0; Type: QD000P40CD; Serial: TP:1722
- Measurement SW: DASY52, Version 52.8 (8); SEMCAD X Version 14.6.10 (7331)

- **Area Scan (111x181x1)**: Interpolated grid: dx=1.000 mm, dy=1.000 mm

Maximum value of SAR (interpolated) = 2.48 W/kg

- **Zoom Scan (7x7x12)/Cube 0**: Measurement grid: dx=4mm, dy=4mm, dz=2mm

Reference Value = 5.103 V/m; Power Drift = 0.06 dB

Peak SAR (extrapolated) = 4.35 W/kg

SAR(1 g) = 1.12 W/kg; SAR(10 g) = 0.363 W/kg

Maximum value of SAR (measured) = 2.64 W/kg



P22 802.11n_HT20_Right Cheek_Ch60

DUT: 171201W001

Communication System: 802.11n; Frequency: 5300 MHz; Duty Cycle: 1:1

Medium: H5G_1206 Medium parameters used: $f = 5300 \text{ MHz}$; $\sigma = 4.681 \text{ S/m}$; $\epsilon_r = 36.986$; $\rho = 1000 \text{ kg/m}^3$

Ambient Temperature : 23.5 °C ; Liquid Temperature : 22.2 °C

DASY5 Configuration:

- Probe: EX3DV4 - SN3873; ConvF(5.04, 5.04, 5.04); Calibrated: 2017/08/25;
- Sensor-Surface: 1.4mm (Mechanical Surface Detection)
- Electronics: DAE4 Sn1341; Calibrated: 2017/08/23
- Phantom: Left Phantom with CRP v5.0; Type: QD000P40CD; Serial: TP:1722
- Measurement SW: DASY52, Version 52.8 (8); SEMCAD X Version 14.6.10 (7331)

- **Area Scan (111x181x1)**: Interpolated grid: $dx=1.000 \text{ mm}$, $dy=1.000 \text{ mm}$

Maximum value of SAR (interpolated) = 3.07 W/kg

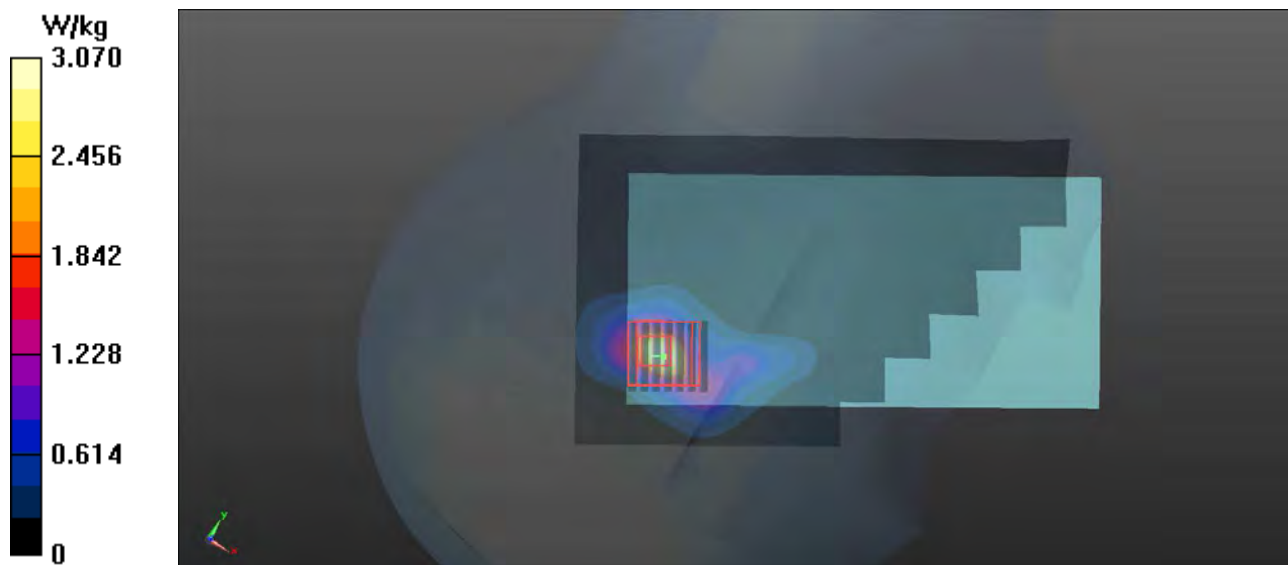
- **Zoom Scan (7x7x12)/Cube 0**: Measurement grid: $dx=4\text{mm}$, $dy=4\text{mm}$, $dz=2\text{mm}$

Reference Value = 5.652 V/m; Power Drift = 0.01 dB

Peak SAR (extrapolated) = 5.22 W/kg

SAR(1 g) = 1.29 W/kg; SAR(10 g) = 0.416 W/kg

Maximum value of SAR (measured) = 3.06 W/kg



P23 802.11n_HT40_Right Cheek_Ch102

DUT: 171201W001

Communication System: 802.11n; Frequency: 5510 MHz; Duty Cycle: 1:1

Medium: H5G_1208 Medium parameters used: $f = 5510 \text{ MHz}$; $\sigma = 5.032 \text{ S/m}$; $\epsilon_r = 35.998$; $\rho = 1000 \text{ kg/m}^3$

Ambient Temperature : $23.4 \text{ }^\circ\text{C}$; Liquid Temperature : $22.1 \text{ }^\circ\text{C}$

DASY5 Configuration:

- Probe: EX3DV4 - SN3873; ConvF(4.66, 4.66, 4.66); Calibrated: 2017/08/25;
- Sensor-Surface: 1.4mm (Mechanical Surface Detection)
- Electronics: DAE4 Sn1341; Calibrated: 2017/08/23
- Phantom: Left Phantom with CRP v5.0; Type: QD000P40CD; Serial: TP:1722
- Measurement SW: DASY52, Version 52.8 (8); SEMCAD X Version 14.6.10 (7331)

- **Area Scan (111x181x1)**: Interpolated grid: $dx=1.000 \text{ mm}$, $dy=1.000 \text{ mm}$

Maximum value of SAR (interpolated) = 2.76 W/kg

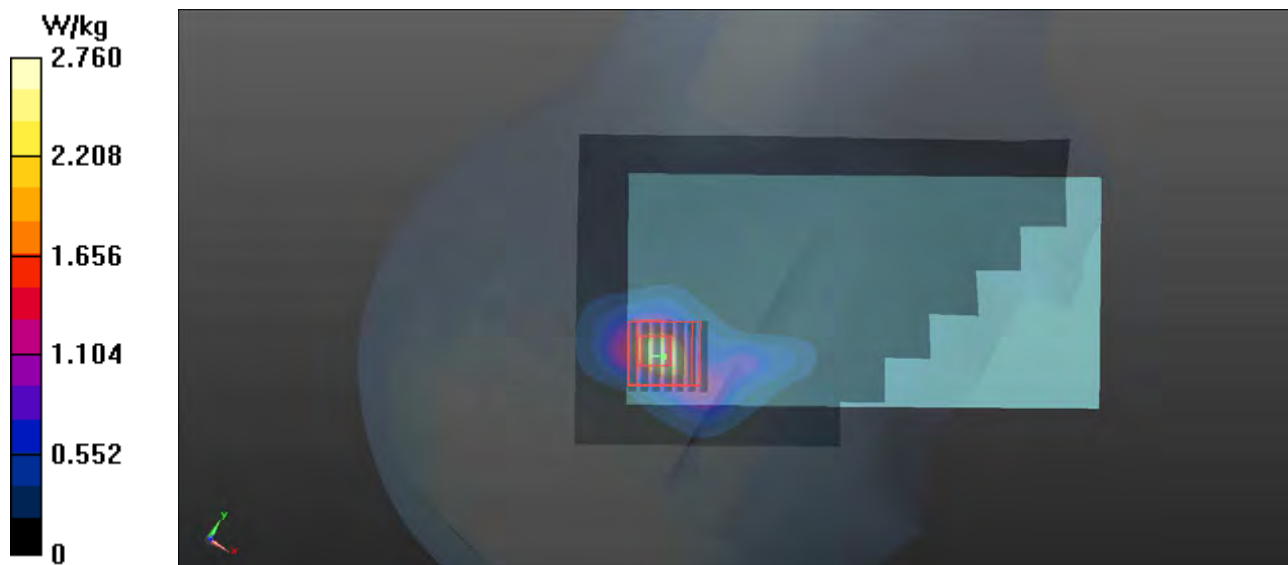
- **Zoom Scan (7x7x12)/Cube 0**: Measurement grid: $dx=4\text{mm}$, $dy=4\text{mm}$, $dz=2\text{mm}$

Reference Value = 6.266 V/m ; Power Drift = 0.01 dB

Peak SAR (extrapolated) = 4.49 W/kg

SAR(1 g) = 1.1 W/kg ; SAR(10 g) = 0.357 W/kg

Maximum value of SAR (measured) = 2.63 W/kg



P24 802.11n_HT40_Right Cheek_Ch159

DUT: 171201W001

Communication System: 802.11n; Frequency: 5795 MHz; Duty Cycle: 1:1

Medium: H5G_1208 Medium parameters used: $f = 5795$ MHz; $\sigma = 5.362$ S/m; $\epsilon_r = 35.46$; $\rho = 1000$ kg/m³

Ambient Temperature : 23.5 °C ; Liquid Temperature : 22.5 °C

DASY5 Configuration:

- Probe: EX3DV4 - SN3873; ConvF(4.7, 4.7, 4.7); Calibrated: 2017/08/25;
- Sensor-Surface: 1.4mm (Mechanical Surface Detection)
- Electronics: DAE4 Sn1341; Calibrated: 2017/08/23
- Phantom: Left Phantom with CRP v5.0; Type: QD000P40CD; Serial: TP:1722
- Measurement SW: DASY52, Version 52.8 (8); SEMCAD X Version 14.6.10 (7331)

- **Area Scan (111x181x1)**: Interpolated grid: dx=1.000 mm, dy=1.000 mm

Maximum value of SAR (interpolated) = 3.21 W/kg

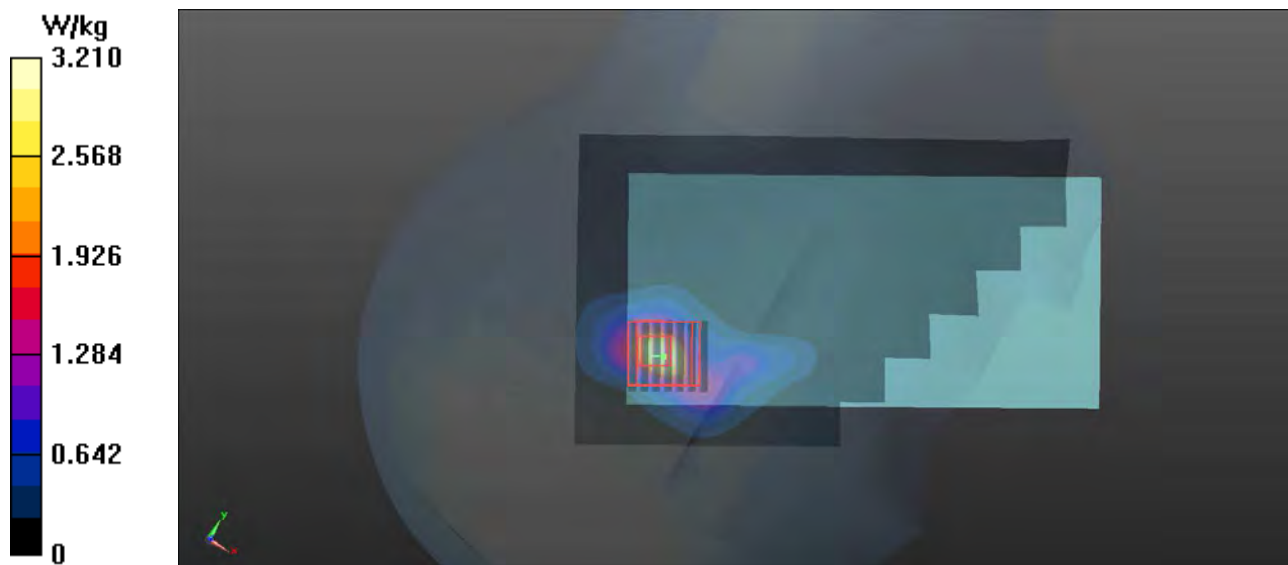
- **Zoom Scan (7x7x12)/Cube 0**: Measurement grid: dx=4mm, dy=4mm, dz=2mm

Reference Value = 7.682 V/m; Power Drift = 0.01 dB

Peak SAR (extrapolated) = 5.32 W/kg

SAR(1 g) = 1.27 W/kg; SAR(10 g) = 0.411 W/kg

Maximum value of SAR (measured) = 3.07 W/kg



P25 BT_GFSK_Right Cheek_Ch39

DUT: 171201W001

Communication System: BT; Frequency: 2441 MHz; Duty Cycle: 1:1

Medium: H2450_1203 Medium parameters used: $f = 2441$ MHz; $\sigma = 1.769$ S/m; $\epsilon_r = 40.223$; $\rho = 1000$ kg/m³

Ambient Temperature : 22.7 °C; Liquid Temperature : 21.8 °C

DASY5 Configuration:

- Probe: EX3DV4 - SN3873; ConvF(7.36, 7.36, 7.36); Calibrated: 2017/08/25;
- Sensor-Surface: 1.4mm (Mechanical Surface Detection)
- Electronics: DAE4 Sn1341; Calibrated: 2017/08/23
- Phantom: Front Phantom with CRP v5.0; Type: QD000P40CD; Serial: TP:1695
- Measurement SW: DASY52, Version 52.8 (8); SEMCAD X Version 14.6.10 (7331)

- **Area Scan (91x151x1):** Interpolated grid: dx=1.200 mm, dy=1.200 mm

Maximum value of SAR (interpolated) = 0.0988 W/kg

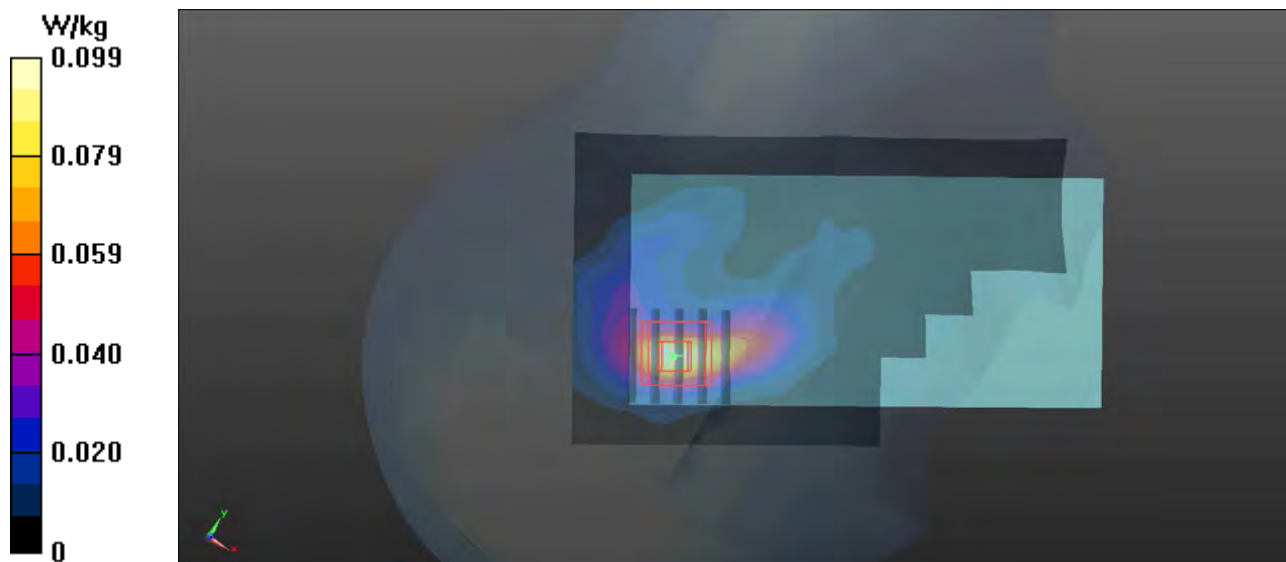
- **Zoom Scan (5x5x7)/Cube 0:** Measurement grid: dx=8mm, dy=8mm, dz=5mm

Reference Value = 2.288 V/m; Power Drift = 0.03 dB

Peak SAR (extrapolated) = 0.122 W/kg

SAR(1 g) = 0.061 W/kg; SAR(10 g) = 0.029 W/kg

Maximum value of SAR (measured) = 0.0932 W/kg



P26 LTE 30_QPSK10M_Rear Face_1cm_Ch27710_1RB_OS0

DUT: 171201W001

Communication System: LTE; Frequency: 2310 MHz; Duty Cycle: 1:1

Medium: B2300_1202 Medium parameters used: $f = 2310$ MHz; $\sigma = 1.81$ S/m; $\epsilon_r = 51.345$; $\rho = 1000$ kg/m³

Ambient Temperature : 23.3 °C ; Liquid Temperature : 22.3 °C

DASY5 Configuration:

- Probe: EX3DV4 - SN3873; ConvF(7.56, 7.56, 7.56); Calibrated: 2017/08/25;
- Sensor-Surface: 1.4mm (Mechanical Surface Detection)
- Electronics: DAE4 Sn1341; Calibrated: 2017/08/23
- Phantom: ELI v5.0; Type: QDOVA002AA; Serial: TP:1205
- Measurement SW: DASY52, Version 52.8 (8); SEMCAD X Version 14.6.10 (7331)

- **Area Scan (91x151x1):** Interpolated grid: dx=1.200 mm, dy=1.200 mm

Maximum value of SAR (interpolated) = 0.641 W/kg

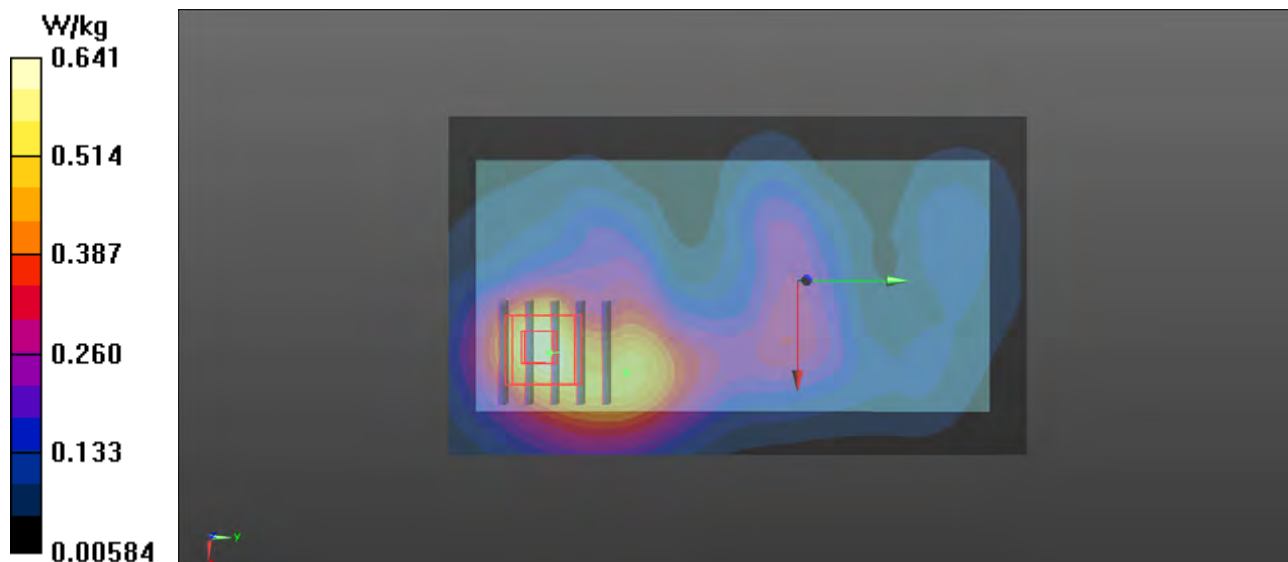
- **Zoom Scan (5x5x7)/Cube 0:** Measurement grid: dx=8mm, dy=8mm, dz=5mm

Reference Value = 7.637 V/m; Power Drift = -0.02 dB

Peak SAR (extrapolated) = 0.788 W/kg

SAR(1 g) = 0.424 W/kg; SAR(10 g) = 0.237 W/kg

Maximum value of SAR (measured) = 0.624 W/kg



P27 LTE 40_QPSK10M_Rear Face_1cm_Ch38750_1RB_OS0

DUT: 171201W001

Communication System: LTE; Frequency: 2310 MHz; Duty Cycle: 1:1.58

Medium: B2300_1202 Medium parameters used: $f = 2310$ MHz; $\sigma = 1.81$ S/m; $\epsilon_r = 51.345$; $\rho = 1000$ kg/m³

Ambient Temperature : 23.3 °C ; Liquid Temperature : 22.3 °C

DASY5 Configuration:

- Probe: EX3DV4 - SN3873; ConvF(7.56, 7.56, 7.56); Calibrated: 2017/08/25;
- Sensor-Surface: 1.4mm (Mechanical Surface Detection)
- Electronics: DAE4 Sn1341; Calibrated: 2017/08/23
- Phantom: ELI v5.0; Type: QDOVA002AA; Serial: TP:1205
- Measurement SW: DASY52, Version 52.8 (8); SEMCAD X Version 14.6.10 (7331)

- **Area Scan (91x151x1):** Interpolated grid: dx=1.200 mm, dy=1.200 mm

Maximum value of SAR (interpolated) = 0.643 W/kg

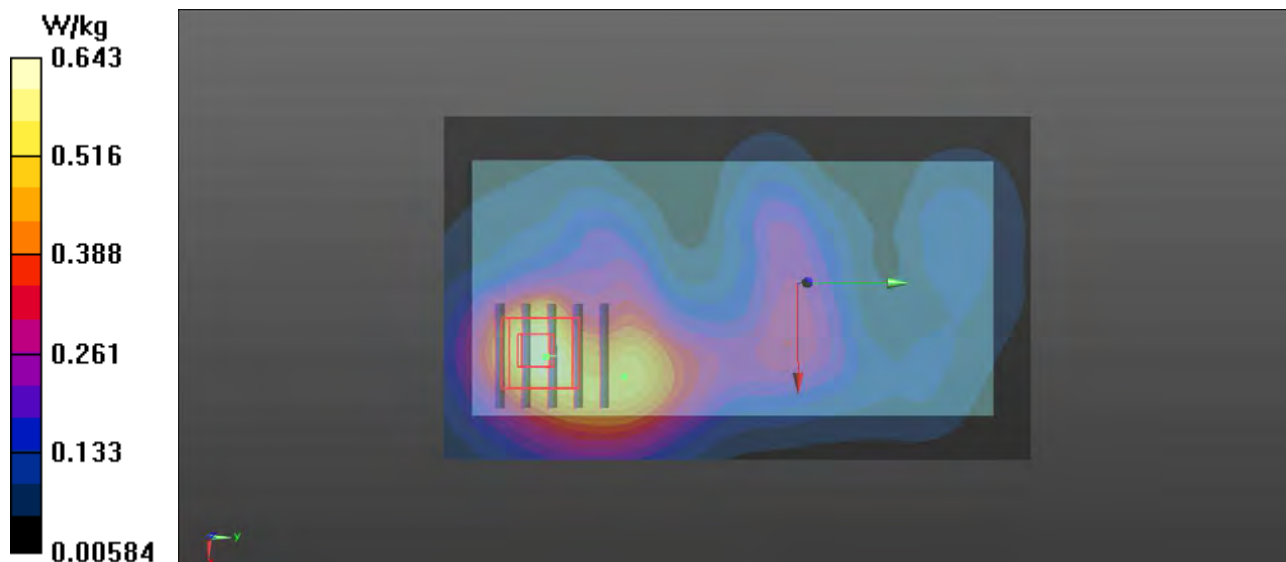
- **Zoom Scan (5x5x7)/Cube 0:** Measurement grid: dx=8mm, dy=8mm, dz=5mm

Reference Value = 7.638 V/m; Power Drift = -0.00 dB

Peak SAR (extrapolated) = 0.791 W/kg

SAR(1 g) = 0.342 W/kg; SAR(10 g) = 0.189 W/kg

Maximum value of SAR (measured) = 0.626 W/kg



P28 802.11n_HT20_Rear Face_1cm_Ch64

DUT: 171201W001

Communication System: 802.11n; Frequency: 5320 MHz; Duty Cycle: 1:1

Medium: B5G_1209 Medium parameters used: $f = 5320$ MHz; $\sigma = 5.378$ S/m; $\epsilon_r = 50.907$; $\rho = 1000$ kg/m³

Ambient Temperature : 23.1 °C ; Liquid Temperature : 22.4 °C

DASY5 Configuration:

- Probe: EX3DV4 - SN3873; ConvF(4.61, 4.61, 4.61); Calibrated: 2017/08/25;
- Sensor-Surface: 1.4mm (Mechanical Surface Detection)
- Electronics: DAE4 Sn1341; Calibrated: 2017/08/23
- Phantom: ELI v5.0; Type: QDOVA002AA; Serial: TP:1205
- Measurement SW: DASY52, Version 52.8 (8); SEMCAD X Version 14.6.10 (7331)

- **Area Scan (111x181x1)**: Interpolated grid: dx=1.000 mm, dy=1.000 mm

Maximum value of SAR (interpolated) = 1.90 W/kg

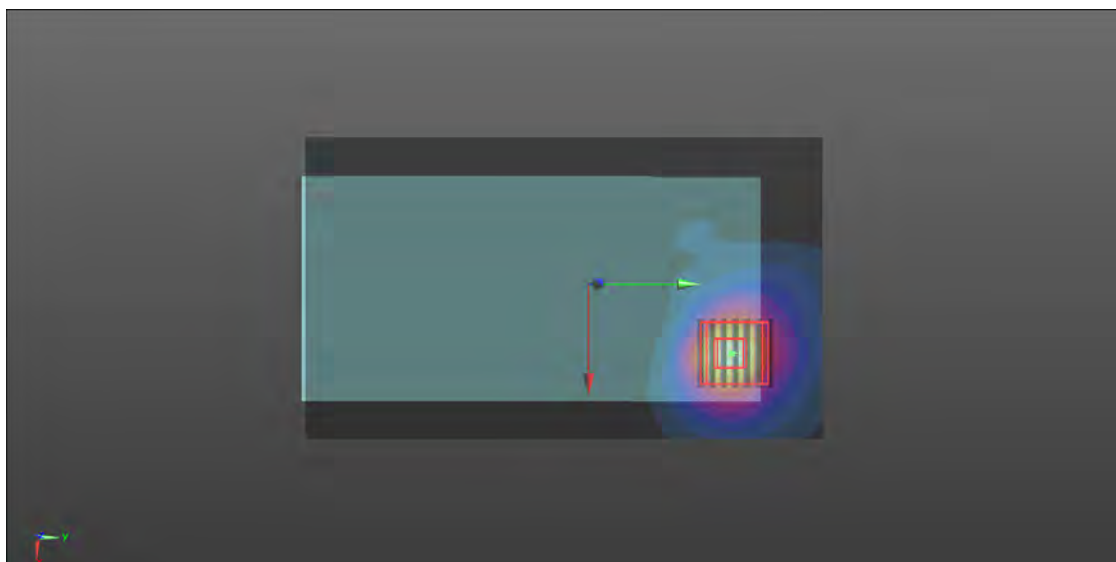
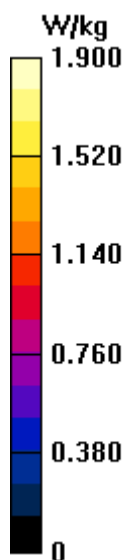
- **Zoom Scan (7x7x12)/Cube 0**: Measurement grid: dx=4mm, dy=4mm, dz=2mm

Reference Value = 1.638 V/m; Power Drift = 0.05 dB

Peak SAR (extrapolated) = 3.21 W/kg

SAR(1 g) = 0.828 W/kg; SAR(10 g) = 0.321 W/kg

Maximum value of SAR (measured) = 1.88 W/kg



P29 802.11n_HT40_Rear Face_1cm_Ch134

DUT: 171201W001

Communication System: 802.11n; Frequency: 5670 MHz; Duty Cycle: 1:1

Medium: B5G_1210 Medium parameters used: $f = 5670$ MHz; $\sigma = 5.953$ S/m; $\epsilon_r = 50.046$; $\rho = 1000$ kg/m³

Ambient Temperature : 23.3 °C ; Liquid Temperature : 22.1 °C

DASY5 Configuration:

- Probe: EX3DV4 - SN3873; ConvF(3.9, 3.9, 3.9); Calibrated: 2017/08/25;
- Sensor-Surface: 1.4mm (Mechanical Surface Detection)
- Electronics: DAE4 Sn1341; Calibrated: 2017/08/23
- Phantom: ELI v5.0; Type: QDOVA002AA; Serial: TP:1205
- Measurement SW: DASY52, Version 52.8 (8); SEMCAD X Version 14.6.10 (7331)

- Area Scan (111x181x1): Interpolated grid: dx=1.000 mm, dy=1.000 mm

Maximum value of SAR (interpolated) = 1.42 W/kg

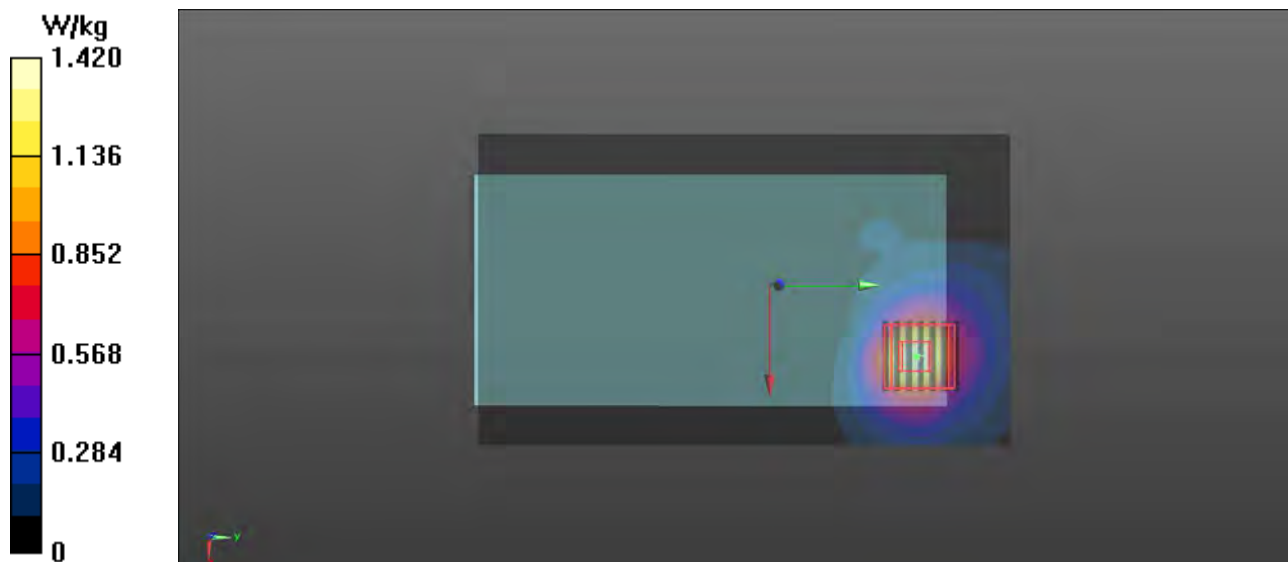
- Zoom Scan (7x7x12)/Cube 0: Measurement grid: dx=4mm, dy=4mm, dz=2mm

Reference Value = 1.573 V/m; Power Drift = -0.03 dB

Peak SAR (extrapolated) = 2.25 W/kg

SAR(1 g) = 0.543 W/kg; SAR(10 g) = 0.206 W/kg

Maximum value of SAR (measured) = 1.34 W/kg



P30 GSM850_GPRS12_Rear Face_1cm_Ch128

DUT: 171201W001

Communication System: GPRS12; Frequency: 824.2 MHz; Duty Cycle: 1:2

Medium: B835_1124 Medium parameters used: $f = 824.2$ MHz; $\sigma = 0.977$ S/m; $\epsilon_r = 54.788$; $\rho =$

1000 kg/m³

Ambient Temperature : 23.4 °C ; Liquid Temperature : 22.4 °C

DASY5 Configuration:

- Probe: EX3DV4 - SN3873; ConvF(9.62, 9.62, 9.62); Calibrated: 2017/08/25;
- Sensor-Surface: 1.4mm (Mechanical Surface Detection)
- Electronics: DAE4 Sn1341; Calibrated: 2017/08/23
- Phantom: Left Phantom with CRP v5.0; Type: QD000P40CD; Serial: TP:1722
- Measurement SW: DASY52, Version 52.8 (8); SEMCAD X Version 14.6.10 (7331)

- **Area Scan (71x121x1):** Interpolated grid: dx=1.500 mm, dy=1.500 mm

Maximum value of SAR (interpolated) = 0.690 W/kg

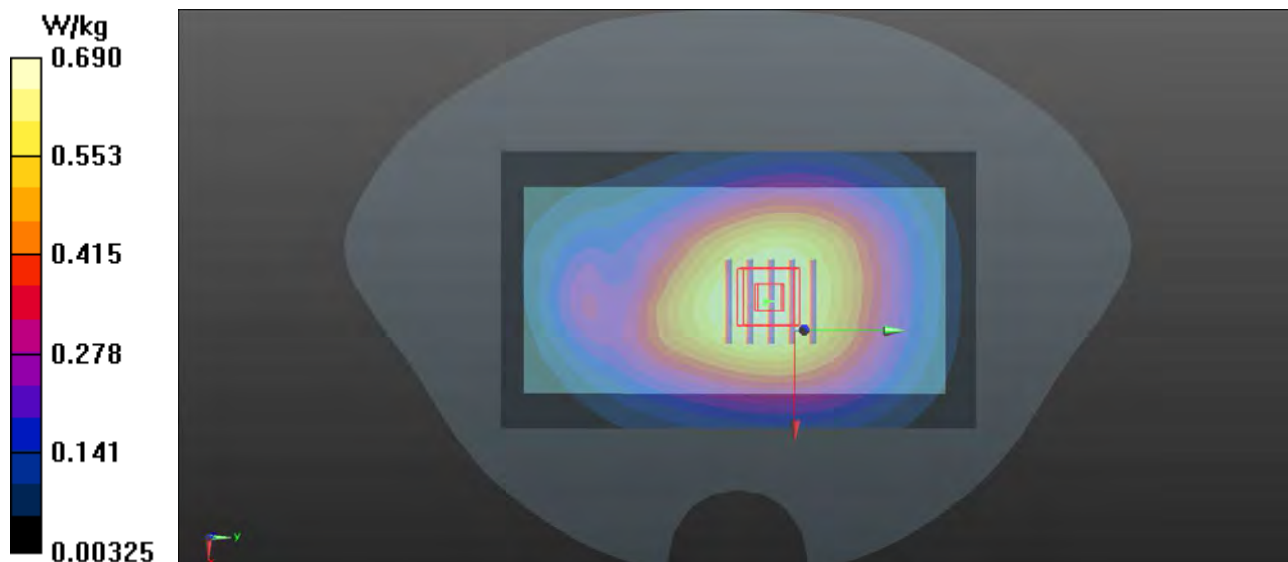
- **Zoom Scan (5x5x7)/Cube 0:** Measurement grid: dx=8mm, dy=8mm, dz=5mm

Reference Value = 24.31 V/m; Power Drift = 0.02 dB

Peak SAR (extrapolated) = 0.738 W/kg

SAR(1 g) = 0.577 W/kg; SAR(10 g) = 0.439 W/kg

Maximum value of SAR (measured) = 0.687 W/kg



P31 GSM1900_GPRS12_Rear Face_1cm_Ch512

DUT: 171201W001

Communication System: GPRS12; Frequency: 1850.2 MHz; Duty Cycle: 1:2

Medium: B1900_1129 Medium parameters used: $f = 1850.2$ MHz; $\sigma = 1.481$ S/m; $\epsilon_r = 52.138$; $\rho = 1000$ kg/m³

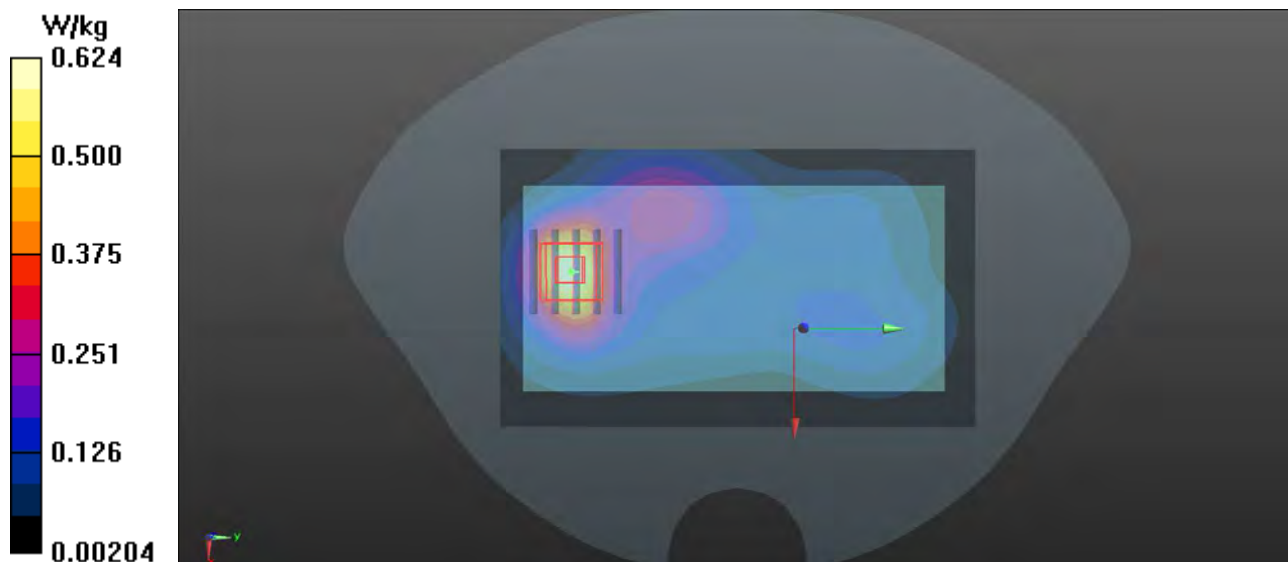
Ambient Temperature : 23.5 °C ; Liquid Temperature : 22.3 °C

DASY5 Configuration:

- Probe: EX3DV4 - SN3873; ConvF(7.77, 7.77, 7.77); Calibrated: 2017/08/25;
- Sensor-Surface: 1.4mm (Mechanical Surface Detection)
- Electronics: DAE4 Sn1341; Calibrated: 2017/08/23
- Phantom: Front Phantom with CRP v5.0; Type: QD000P40CD; Serial: TP:1695
- Measurement SW: DASY52, Version 52.8 (8); SEMCAD X Version 14.6.10 (7331)

- **Area Scan (71x121x1):** Interpolated grid: dx=1.500 mm, dy=1.500 mm
Maximum value of SAR (interpolated) = 0.624 W/kg

- **Zoom Scan (5x5x7)/Cube 0:** Measurement grid: dx=8mm, dy=8mm, dz=5mm
Reference Value = 8.095 V/m; Power Drift = -0.02 dB
Peak SAR (extrapolated) = 0.757 W/kg
SAR(1 g) = 0.454 W/kg; SAR(10 g) = 0.258 W/kg
Maximum value of SAR (measured) = 0.648 W/kg



P32 WCDMA II_RMC12.2K_Rear Face_1cm_Ch9538

DUT: 171201W001

Communication System: WCDMA; Frequency: 1907.6 MHz; Duty Cycle: 1:1

Medium: B1900_1129 Medium parameters used: $f = 1852.4$ MHz; $\sigma = 1.483$ S/m; $\epsilon_r = 52.131$; $\rho =$

1000 kg/m³

Ambient Temperature : 23.5 °C ; Liquid Temperature : 22.3 °C

DASY5 Configuration:

- Probe: EX3DV4 - SN3873; ConvF(7.77, 7.77, 7.77); Calibrated: 2017/08/25;
- Sensor-Surface: 1.4mm (Mechanical Surface Detection)
- Electronics: DAE4 Sn1341; Calibrated: 2017/08/23
- Phantom: Front Phantom with CRP v5.0; Type: QD000P40CD; Serial: TP:1695
- Measurement SW: DASY52, Version 52.8 (8); SEMCAD X Version 14.6.10 (7331)

- **Area Scan (71x121x1):** Interpolated grid: dx=1.500 mm, dy=1.500 mm

Maximum value of SAR (interpolated) = 1.64 W/kg

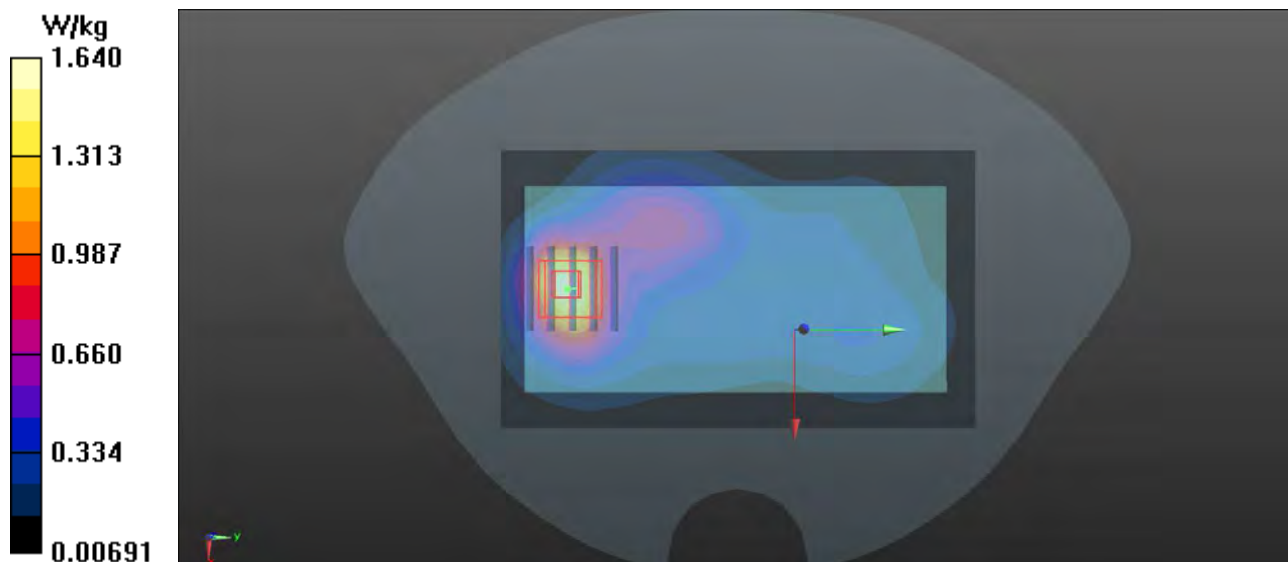
- **Zoom Scan (5x5x7)/Cube 0:** Measurement grid: dx=8mm, dy=8mm, dz=5mm

Reference Value = 13.03 V/m; Power Drift = -0.06 dB

Peak SAR (extrapolated) = 1.96 W/kg

SAR(1 g) = 1.18 W/kg; SAR(10 g) = 0.668 W/kg

Maximum value of SAR (measured) = 1.69 W/kg



P33 WCDMA IV_RMC12.2K_Rear Face_1cm_Ch1513

DUT: 171201W001

Communication System: WCDMA; Frequency: 1752.6 MHz; Duty Cycle: 1:1

Medium: B1750_1127 Medium parameters used: $f = 1753$ MHz; $\sigma = 1.495$ S/m; $\epsilon_r = 51.965$; $\rho =$

1000 kg/m³

Ambient Temperature : 23.2 °C ; Liquid Temperature : 22.2 °C

DASY5 Configuration:

- Probe: EX3DV4 - SN3873; ConvF(8.04, 8.04, 8.04); Calibrated: 2017/08/25;
- Sensor-Surface: 1.4mm (Mechanical Surface Detection)
- Electronics: DAE4 Sn1341; Calibrated: 2017/08/23
- Phantom: Front Phantom with CRP v5.0; Type: QD000P40CD; Serial: TP:1695
- Measurement SW: DASY52, Version 52.8 (8); SEMCAD X Version 14.6.10 (7331)

- **Area Scan (71x121x1):** Interpolated grid: dx=1.500 mm, dy=1.500 mm

Maximum value of SAR (interpolated) = 1.85 W/kg

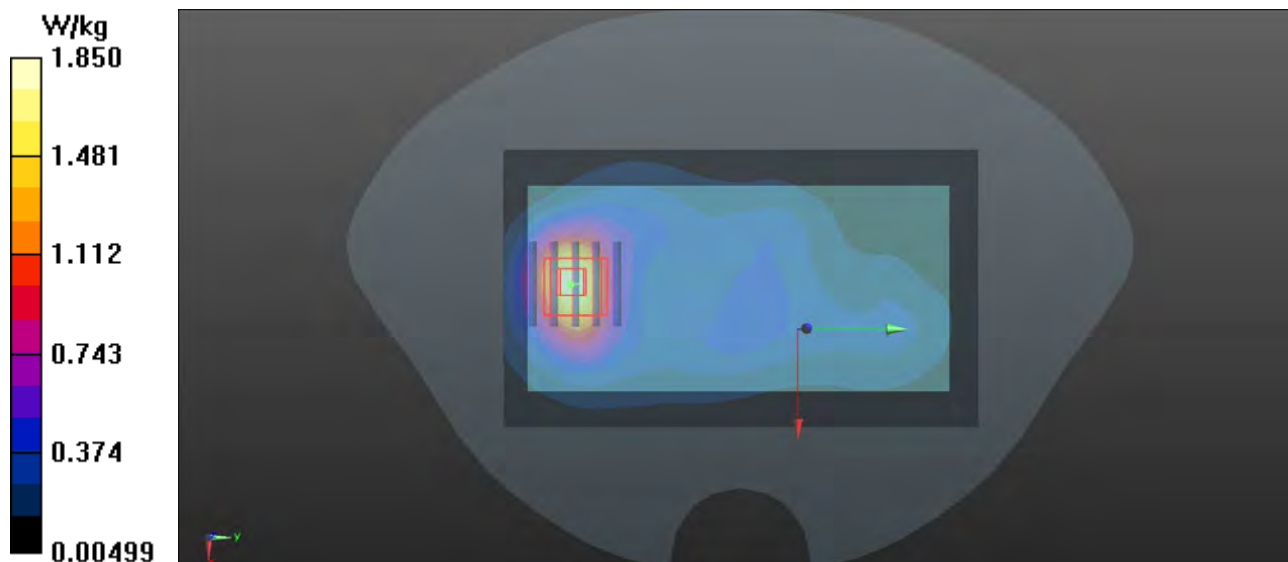
- **Zoom Scan (5x5x7)/Cube 0:** Measurement grid: dx=8mm, dy=8mm, dz=5mm

Reference Value = 14.83 V/m; Power Drift = 0.02 dB

Peak SAR (extrapolated) = 2.15 W/kg

SAR(1 g) = 1.23 W/kg; SAR(10 g) = 0.712 W/kg

Maximum value of SAR (measured) = 1.87 W/kg



P34 WCDMA V_RMC12.2K_Rear Face_1cm_Ch4132

DUT: 171201W001

Communication System: WCDMA; Frequency: 826.4 MHz; Duty Cycle: 1:1

Medium: B835_1124 Medium parameters used: $f = 826.4$ MHz; $\sigma = 0.98$ S/m; $\epsilon_r = 54.761$; $\rho =$

1000 kg/m³

Ambient Temperature : 23.4 °C; Liquid Temperature : 22.4 °C

DASY5 Configuration:

- Probe: EX3DV4 - SN3873; ConvF(9.62, 9.62, 9.62); Calibrated: 2017/08/25;
- Sensor-Surface: 1.4mm (Mechanical Surface Detection)
- Electronics: DAE4 Sn1341; Calibrated: 2017/08/23
- Phantom: Left Phantom with CRP v5.0; Type: QD000P40CD; Serial: TP:1722
- Measurement SW: DASY52, Version 52.8 (8); SEMCAD X Version 14.6.10 (7331)

- **Area Scan (71x121x1):** Interpolated grid: $dx=1.500$ mm, $dy=1.500$ mm

Maximum value of SAR (interpolated) = 0.724 W/kg

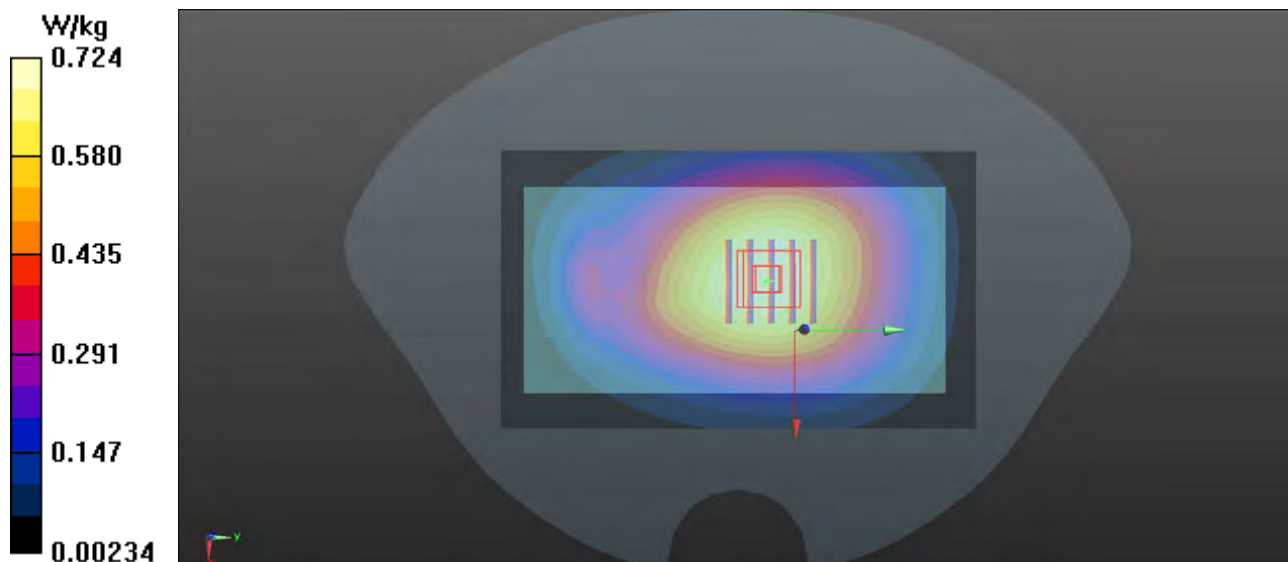
- **Zoom Scan (5x5x7)/Cube 0:** Measurement grid: $dx=8$ mm, $dy=8$ mm, $dz=5$ mm

Reference Value = 25.09 V/m; Power Drift = 0.05 dB

Peak SAR (extrapolated) = 0.782 W/kg

SAR(1 g) = 0.609 W/kg; SAR(10 g) = 0.468 W/kg

Maximum value of SAR (measured) = 0.728 W/kg



P35 LTE 2_QPSK20M_Rear Face_1cm_Ch18900_1RB_OS0

DUT: 171201W001

Communication System: LTE; Frequency: 1880 MHz; Duty Cycle: 1:1

Medium: B1900_1130 Medium parameters used: $f = 1900$ MHz; $\sigma = 1.546$ S/m; $\epsilon_r = 52.423$; $\rho = 1000$ kg/m³

Ambient Temperature : 23.5 °C ; Liquid Temperature : 22.3 °C

DASY5 Configuration:

- Probe: EX3DV4 - SN3873; ConvF(7.77, 7.77, 7.77); Calibrated: 2017/08/25;
- Sensor-Surface: 1.4mm (Mechanical Surface Detection)
- Electronics: DAE4 Sn1341; Calibrated: 2017/08/23
- Phantom: Front Phantom with CRP v5.0; Type: QD000P40CD; Serial: TP:1695
- Measurement SW: DASY52, Version 52.8 (8); SEMCAD X Version 14.6.10 (7331)

- **Area Scan (71x121x1):** Interpolated grid: dx=1.500 mm, dy=1.500 mm

Maximum value of SAR (interpolated) = 1.40 W/kg

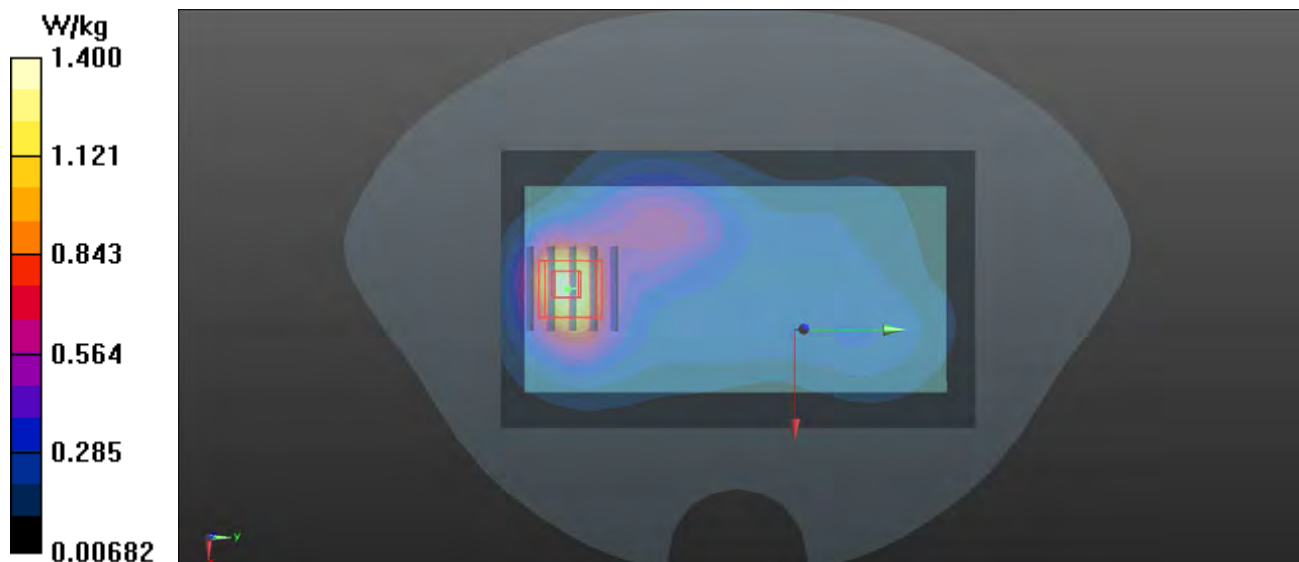
- **Zoom Scan (5x5x7)/Cube 0:** Measurement grid: dx=8mm, dy=8mm, dz=5mm

Reference Value = 11.59 V/m; Power Drift = 0.06 dB

Peak SAR (extrapolated) = 1.71 W/kg

SAR(1 g) = 0.982 W/kg; SAR(10 g) = 0.552 W/kg

Maximum value of SAR (measured) = 1.47 W/kg



P36 LTE 4_QPSK20M_Rear Face_1cm_Ch20300_1RB_OS0

DUT: 171201W001

Communication System: LTE; Frequency: 1745 MHz; Duty Cycle: 1:1

Medium: B1750_1128 Medium parameters used: $f = 1745$ MHz; $\sigma = 1.473$ S/m; $\epsilon_r = 52.395$; $\rho = 1000$ kg/m³

Ambient Temperature : 23.2 °C ; Liquid Temperature : 22.2 °C

DASY5 Configuration:

- Probe: EX3DV4 - SN3873; ConvF(8.04, 8.04, 8.04); Calibrated: 2017/08/25;
- Sensor-Surface: 1.4mm (Mechanical Surface Detection)
- Electronics: DAE4 Sn1341; Calibrated: 2017/08/23
- Phantom: Front Phantom with CRP v5.0; Type: QD000P40CD; Serial: TP:1695
- Measurement SW: DASY52, Version 52.8 (8); SEMCAD X Version 14.6.10 (7331)

- **Area Scan (71x121x1):** Interpolated grid: dx=1.500 mm, dy=1.500 mm

Maximum value of SAR (interpolated) = 1.52 W/kg

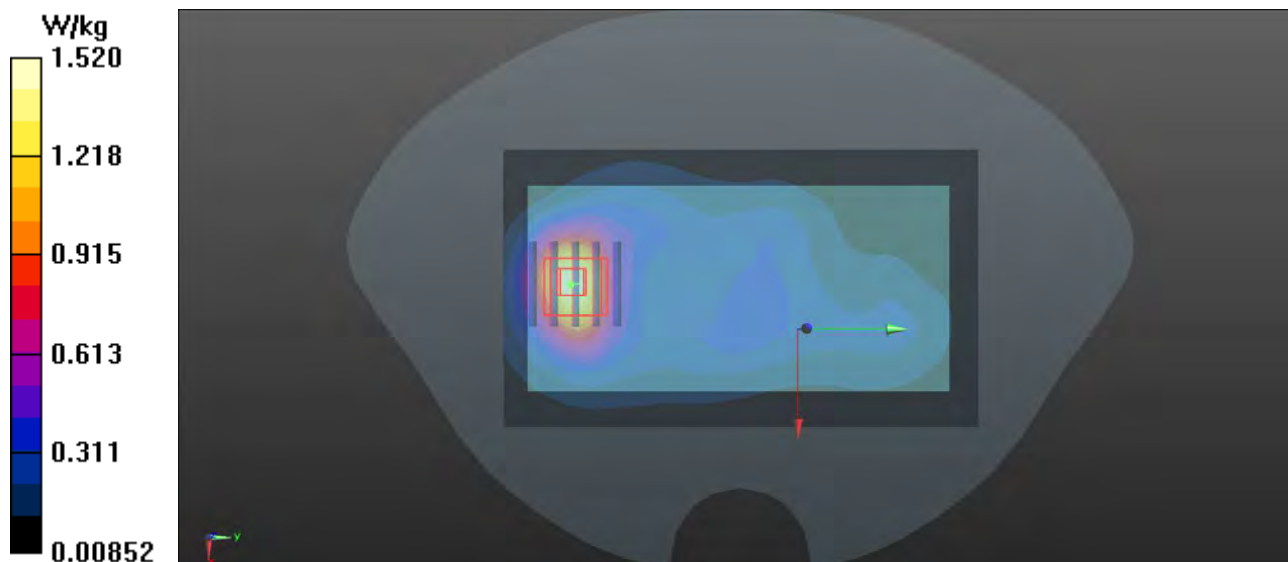
- **Zoom Scan (5x5x7)/Cube 0:** Measurement grid: dx=8mm, dy=8mm, dz=5mm

Reference Value = 15.00 V/m; Power Drift = 0.07 dB

Peak SAR (extrapolated) = 1.77 W/kg

SAR(1 g) = 1.01 W/kg; SAR(10 g) = 0.622 W/kg

Maximum value of SAR (measured) = 1.55 W/kg



P37 LTE 5_QPSK10M_Rear Face_1cm_Ch20600_1RB_OS0

DUT: 171201W001

Communication System: LTE; Frequency: 844 MHz; Duty Cycle: 1:1

Medium: B835_1124 Medium parameters used: $f = 836.5$ MHz; $\sigma = 0.994$ S/m; $\epsilon_r = 54.657$; $\rho = 1000$ kg/m³

Ambient Temperature : 23.4 °C; Liquid Temperature : 22.4 °C

DASY5 Configuration:

- Probe: EX3DV4 - SN3873; ConvF(9.62, 9.62, 9.62); Calibrated: 2017/08/25;
- Sensor-Surface: 1.4mm (Mechanical Surface Detection)
- Electronics: DAE4 Sn1341; Calibrated: 2017/08/23
- Phantom: Left Phantom with CRP v5.0; Type: QD000P40CD; Serial: TP:1722
- Measurement SW: DASY52, Version 52.8 (8); SEMCAD X Version 14.6.10 (7331)

- **Area Scan (71x121x1):** Interpolated grid: dx=1.500 mm, dy=1.500 mm

Maximum value of SAR (interpolated) = 0.692 W/kg

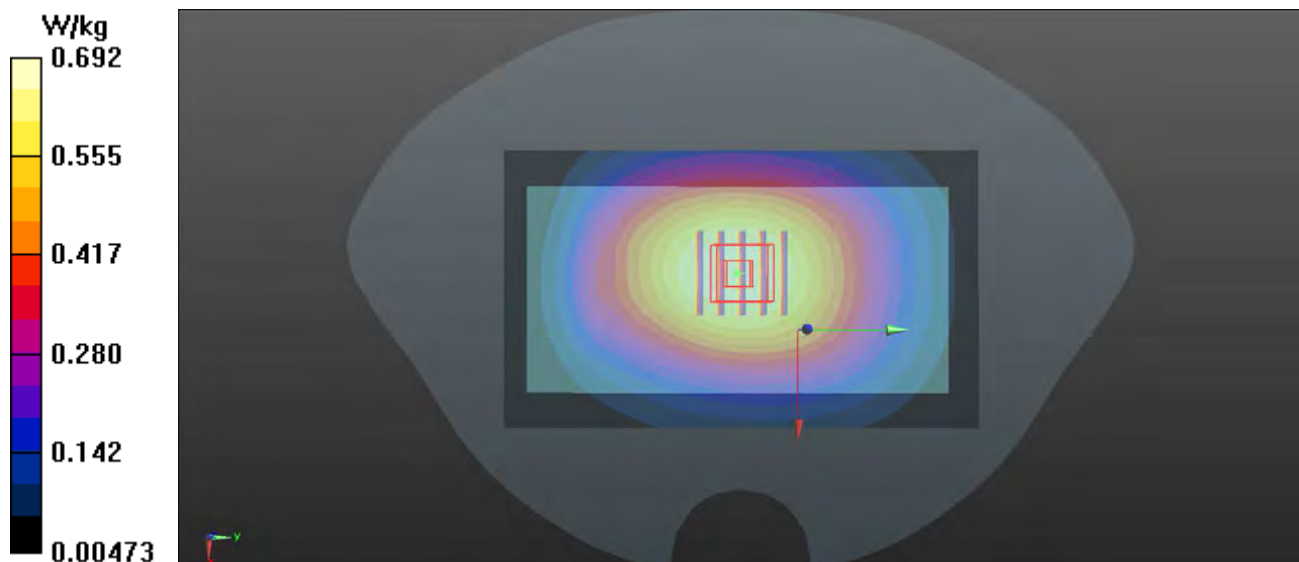
- **Zoom Scan (5x5x7)/Cube 0:** Measurement grid: dx=8mm, dy=8mm, dz=5mm

Reference Value = 24.61 V/m; Power Drift = 0.09 dB

Peak SAR (extrapolated) = 0.737 W/kg

SAR(1 g) = 0.416 W/kg; SAR(10 g) = 0.314 W/kg

Maximum value of SAR (measured) = 0.689 W/kg



P38 LTE 7_QPSK20M_Rear Face_1cm_Ch21100_1RB_OS0

DUT: 171201W001

Communication System: LTE; Frequency: 2535 MHz; Duty Cycle: 1:1

Medium: B2600_1205 Medium parameters used: $f = 2535$ MHz; $\sigma = 2.017$ S/m; $\epsilon_r = 50.982$; $\rho = 1000$ kg/m³

Ambient Temperature : 23.1 °C ; Liquid Temperature : 22.4 °C

DASY5 Configuration:

- Probe: EX3DV4 - SN3873; ConvF(7.19, 7.19, 7.19); Calibrated: 2017/08/25;
- Sensor-Surface: 1.4mm (Mechanical Surface Detection)
- Electronics: DAE4 Sn1341; Calibrated: 2017/08/23
- Phantom: ELI v5.0; Type: QDOVA002AA; Serial: TP:1205
- Measurement SW: DASY52, Version 52.8 (8); SEMCAD X Version 14.6.10 (7331)

- **Area Scan (91x151x1):** Interpolated grid: dx=1.200 mm, dy=1.200 mm

Maximum value of SAR (interpolated) = 1.39 W/kg

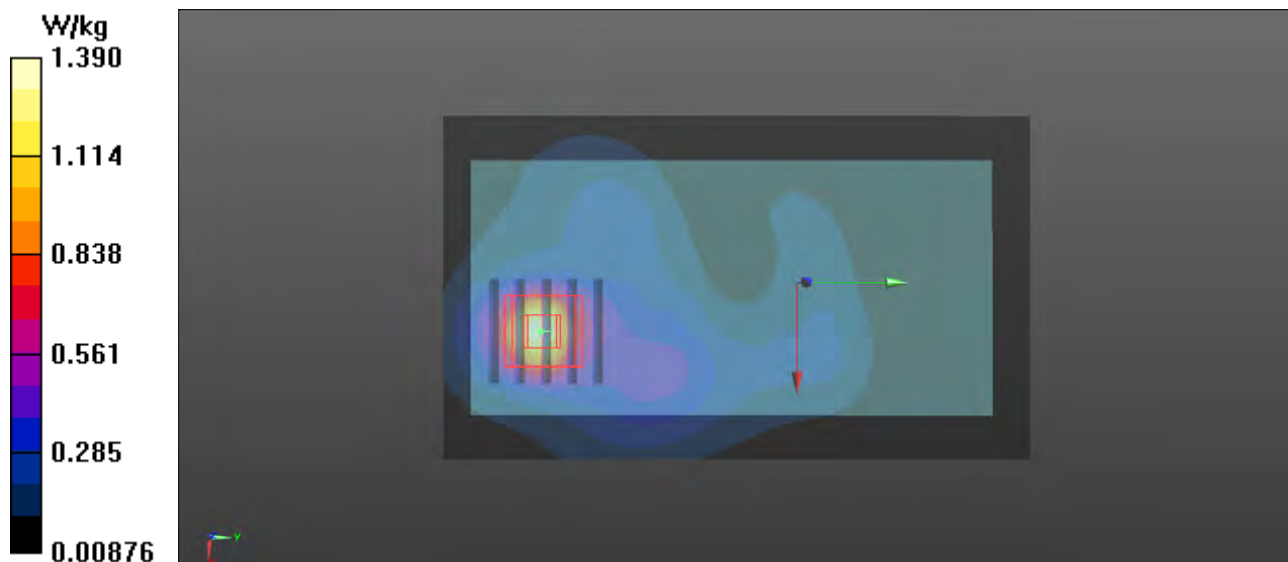
- **Zoom Scan (5x5x7)/Cube 0:** Measurement grid: dx=8mm, dy=8mm, dz=5mm

Reference Value = 5.255 V/m; Power Drift = 0.08 dB

Peak SAR (extrapolated) = 1.69 W/kg

SAR(1 g) = 0.861 W/kg; SAR(10 g) = 0.417 W/kg

Maximum value of SAR (measured) = 1.37 W/kg



P39 LTE 12_QPSK10M_Rear Face_1cm_Ch23130_1RB_OS0

DUT: 171201W001

Communication System: LTE; Frequency: 711 MHz; Duty Cycle: 1:1

Medium: B750_1123 Medium parameters used: $f = 711$ MHz; $\sigma = 0.934$ S/m; $\epsilon_r = 55.578$; $\rho = 1000$ kg/m³

Ambient Temperature : 23.1 °C; Liquid Temperature : 22.1 °C

DASY5 Configuration:

- Probe: EX3DV4 - SN3873; ConvF(9.72, 9.72, 9.72); Calibrated: 2017/08/25;
- Sensor-Surface: 1.4mm (Mechanical Surface Detection)
- Electronics: DAE4 Sn1341; Calibrated: 2017/08/23
- Phantom: Left Phantom with CRP v5.0; Type: QD000P40CD; Serial: TP:1722
- Measurement SW: DASY52, Version 52.8 (8); SEMCAD X Version 14.6.10 (7331)

- **Area Scan (71x121x1):** Interpolated grid: dx=1.500 mm, dy=1.500 mm

Maximum value of SAR (interpolated) = 0.625 W/kg

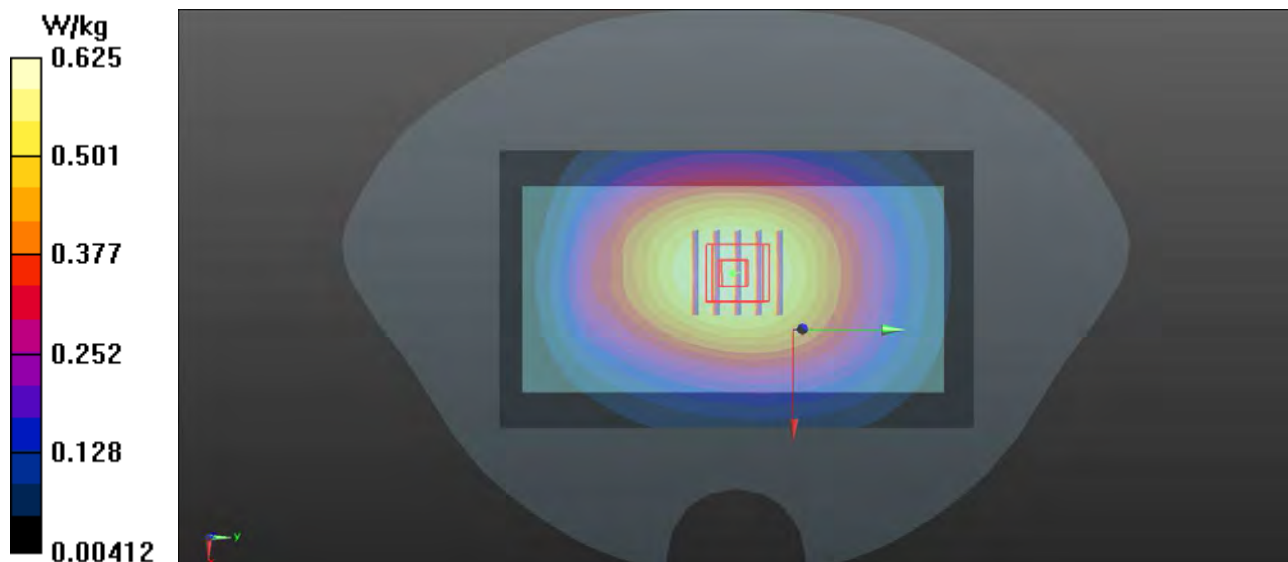
- **Zoom Scan (5x5x7)/Cube 0:** Measurement grid: dx=8mm, dy=8mm, dz=5mm

Reference Value = 24.13 V/m; Power Drift = 0.01 dB

Peak SAR (extrapolated) = 0.665 W/kg

SAR(1 g) = 0.513 W/kg; SAR(10 g) = 0.402 W/kg

Maximum value of SAR (measured) = 0.624 W/kg



P40 LTE 13_QPSK10M_Rear Face_1cm_Ch23230_1RB_OS0

DUT: 171201W001

Communication System: LTE; Frequency: 782 MHz; Duty Cycle: 1:1

Medium: B750_1123 Medium parameters used: $f = 782 \text{ MHz}$; $\sigma = 0.993 \text{ S/m}$; $\epsilon_r = 54.945$; $\rho = 1000 \text{ kg/m}^3$

Ambient Temperature : 23.1 °C; Liquid Temperature : 22.1 °C

DASY5 Configuration:

- Probe: EX3DV4 - SN3873; ConvF(9.72, 9.72, 9.72); Calibrated: 2017/08/25;
- Sensor-Surface: 1.4mm (Mechanical Surface Detection)
- Electronics: DAE4 Sn1341; Calibrated: 2017/08/23
- Phantom: Left Phantom with CRP v5.0; Type: QD000P40CD; Serial: TP:1722
- Measurement SW: DASY52, Version 52.8 (8); SEMCAD X Version 14.6.10 (7331)

- **Area Scan (71x121x1):** Interpolated grid: $dx=1.500 \text{ mm}$, $dy=1.500 \text{ mm}$

Maximum value of SAR (interpolated) = 0.472 W/kg

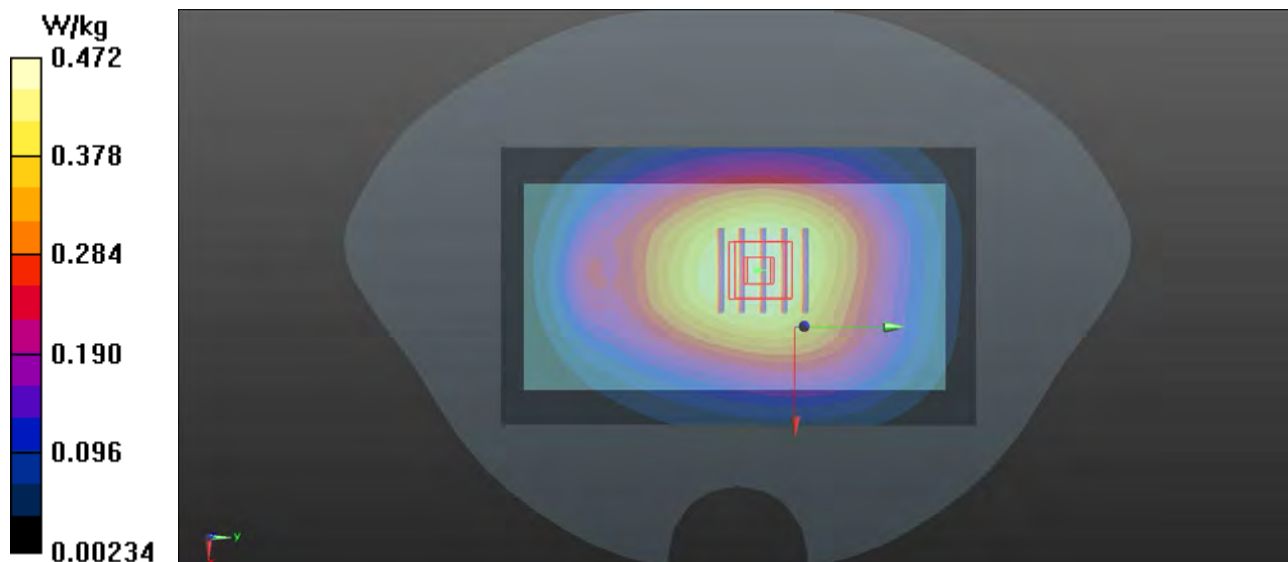
- **Zoom Scan (5x5x7)/Cube 0:** Measurement grid: $dx=8\text{mm}$, $dy=8\text{mm}$, $dz=5\text{mm}$

Reference Value = 20.13 V/m; Power Drift = 0.08 dB

Peak SAR (extrapolated) = 0.505 W/kg

SAR(1 g) = 0.398 W/kg; SAR(10 g) = 0.306 W/kg

Maximum value of SAR (measured) = 0.471 W/kg



P41 LTE 14_QPSK10M_Rear Face_1cm_Ch23330_1RB_OS0

DUT: 171201W001

Communication System: LTE; Frequency: 793 MHz; Duty Cycle: 1:1

Medium: B750_1123 Medium parameters used: $f = 793 \text{ MHz}$; $\sigma = 1.001 \text{ S/m}$; $\epsilon_r = 54.83$; $\rho = 1000 \text{ kg/m}^3$

Ambient Temperature : 23.1 °C ; Liquid Temperature : 22.1 °C

DASY5 Configuration:

- Probe: EX3DV4 - SN3873; ConvF(9.72, 9.72, 9.72); Calibrated: 2017/08/25;
- Sensor-Surface: 1.4mm (Mechanical Surface Detection)
- Electronics: DAE4 Sn1341; Calibrated: 2017/08/23
- Phantom: Left Phantom with CRP v5.0; Type: QD000P40CD; Serial: TP:1722
- Measurement SW: DASY52, Version 52.8 (8); SEMCAD X Version 14.6.10 (7331)

- **Area Scan (71x121x1):** Interpolated grid: $dx=1.500 \text{ mm}$, $dy=1.500 \text{ mm}$

Maximum value of SAR (interpolated) = 0.513 W/kg

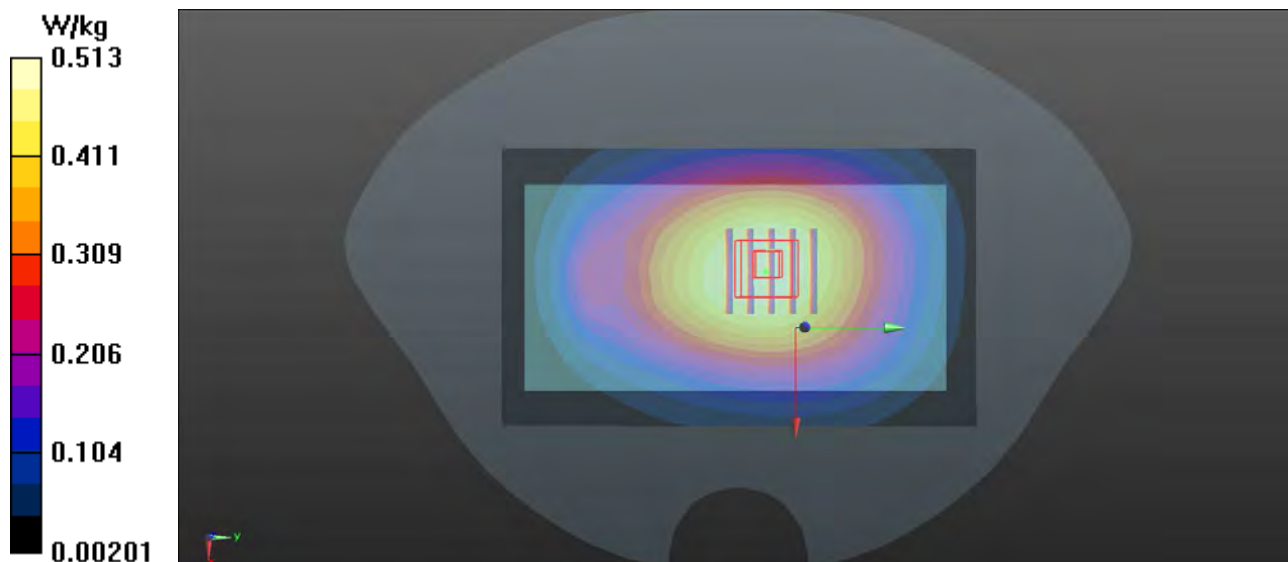
- **Zoom Scan (5x5x7)/Cube 0:** Measurement grid: $dx=8\text{mm}$, $dy=8\text{mm}$, $dz=5\text{mm}$

Reference Value = 20.92 V/m; Power Drift = 0.05 dB

Peak SAR (extrapolated) = 0.562 W/kg

SAR(1 g) = 0.439 W/kg; SAR(10 g) = 0.337 W/kg

Maximum value of SAR (measured) = 0.520 W/kg



P42 LTE 25_QPSK20M_Rear Face_1cm_Ch26140_1RB_OS0

DUT: 171201W001

Communication System: LTE; Frequency: 1860 MHz; Duty Cycle: 1:1

Medium: B1900_1130 Medium parameters used: $f = 1860$ MHz; $\sigma = 1.501$ S/m; $\epsilon_r = 52.562$; $\rho = 1000$ kg/m³

Ambient Temperature : 23.5 °C; Liquid Temperature : 22.3 °C

DASY5 Configuration:

- Probe: EX3DV4 - SN3873; ConvF(7.77, 7.77, 7.77); Calibrated: 2017/08/25;
- Sensor-Surface: 1.4mm (Mechanical Surface Detection)
- Electronics: DAE4 Sn1341; Calibrated: 2017/08/23
- Phantom: Front Phantom with CRP v5.0; Type: QD000P40CD; Serial: TP:1695
- Measurement SW: DASY52, Version 52.8 (8); SEMCAD X Version 14.6.10 (7331)

- **Area Scan (71x121x1):** Interpolated grid: dx=1.500 mm, dy=1.500 mm

Maximum value of SAR (interpolated) = 1.58 W/kg

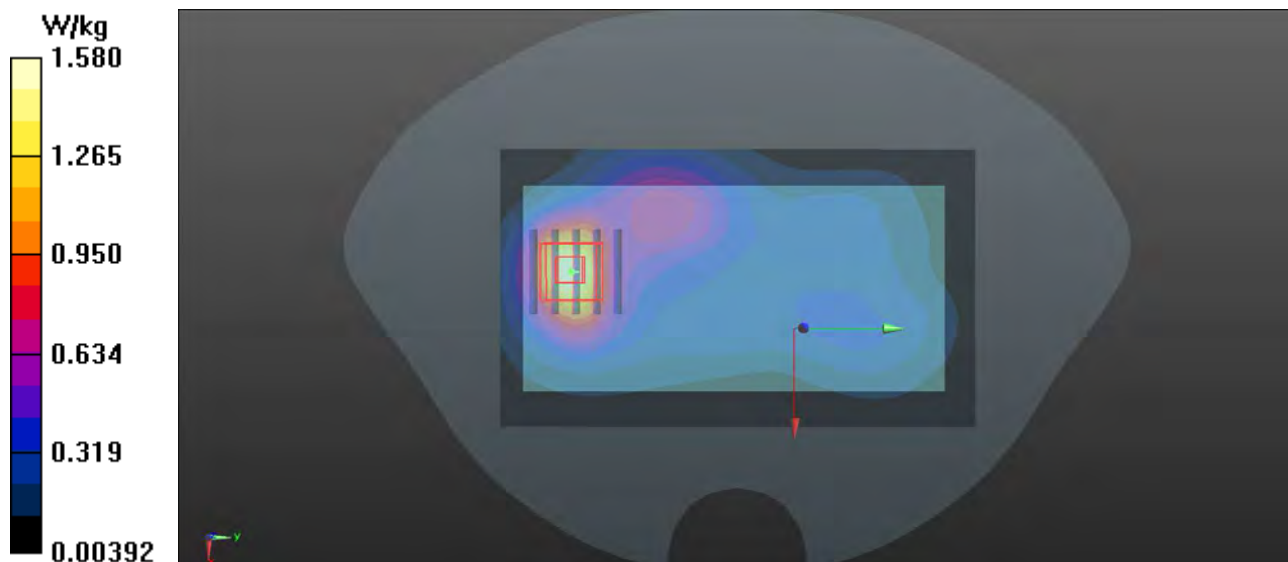
- **Zoom Scan (5x5x7)/Cube 0:** Measurement grid: dx=8mm, dy=8mm, dz=5mm

Reference Value = 11.85 V/m; Power Drift = 0.01 dB

Peak SAR (extrapolated) = 1.82 W/kg

SAR(1 g) = 1.08 W/kg; SAR(10 g) = 0.605 W/kg

Maximum value of SAR (measured) = 1.55 W/kg



P43 LTE 26_QPSK15M_Rear Face_1cm_Ch26865_1RB_OS0

DUT: 171201W001

Communication System: LTE; Frequency: 831.5 MHz; Duty Cycle: 1:1

Medium: B835_1124 Medium parameters used: $f = 831.5$ MHz; $\sigma = 0.987$ S/m; $\epsilon_r = 54.705$; $\rho =$

1000 kg/m³

Ambient Temperature : 23.4 °C; Liquid Temperature : 22.4 °C

DASY5 Configuration:

- Probe: EX3DV4 - SN3873; ConvF(9.62, 9.62, 9.62); Calibrated: 2017/08/25;
- Sensor-Surface: 1.4mm (Mechanical Surface Detection)
- Electronics: DAE4 Sn1341; Calibrated: 2017/08/23
- Phantom: Left Phantom with CRP v5.0; Type: QD000P40CD; Serial: TP:1722
- Measurement SW: DASY52, Version 52.8 (8); SEMCAD X Version 14.6.10 (7331)

- **Area Scan (71x121x1):** Interpolated grid: dx=1.500 mm, dy=1.500 mm

Maximum value of SAR (interpolated) = 0.652 W/kg

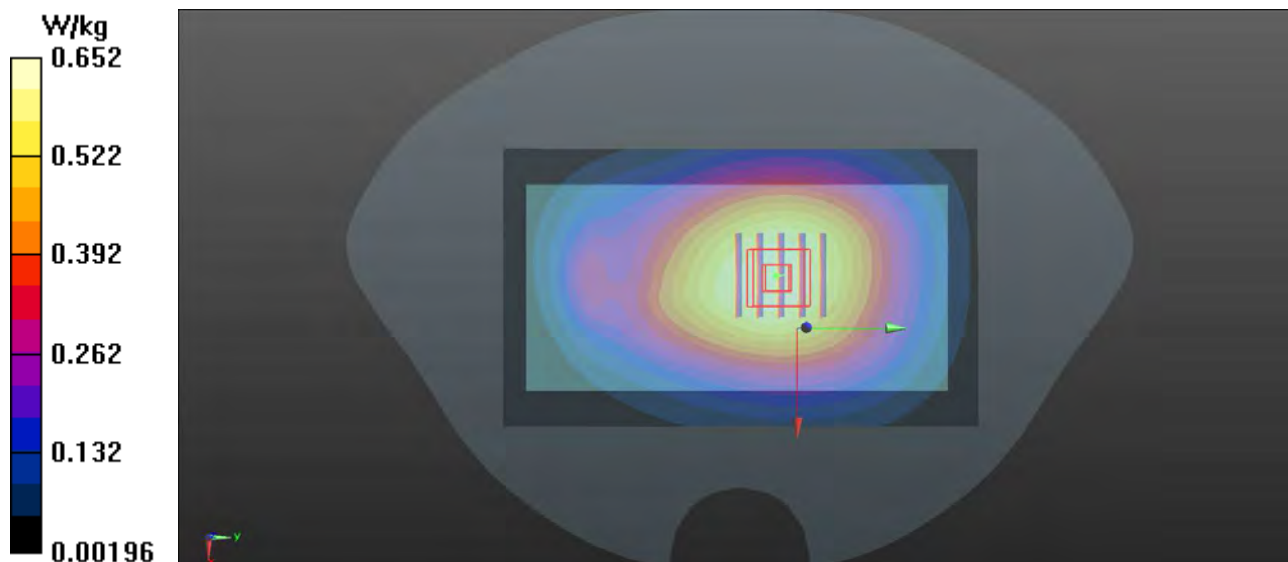
- **Zoom Scan (5x5x7)/Cube 0:** Measurement grid: dx=8mm, dy=8mm, dz=5mm

Reference Value = 23.53 V/m; Power Drift = -0.01 dB

Peak SAR (extrapolated) = 0.703 W/kg

SAR(1 g) = 0.505 W/kg; SAR(10 g) = 0.409 W/kg

Maximum value of SAR (measured) = 0.654 W/kg



P44 LTE 30_QPSK10M_Bottom Side_1cm_Ch27710_1RB_OS0

DUT: 171201W001

Communication System: LTE; Frequency: 2310 MHz; Duty Cycle: 1:1

Medium: B2300_1202 Medium parameters used: $f = 2310$ MHz; $\sigma = 1.812$ S/m; $\epsilon_r = 52.616$; $\rho = 1000$ kg/m³

Ambient Temperature : 23.3 °C ; Liquid Temperature : 22.3 °C

DASY5 Configuration:

- Probe: EX3DV4 - SN3873; ConvF(7.56, 7.56, 7.56); Calibrated: 2017/08/25;
- Sensor-Surface: 1.4mm (Mechanical Surface Detection)
- Electronics: DAE4 Sn1341; Calibrated: 2017/08/23
- Phantom: ELI v5.0; Type: QDOVA002AA; Serial: TP:1205
- Measurement SW: DASY52, Version 52.8 (8); SEMCAD X Version 14.6.10 (7331)

- **Area Scan (51x101x1):** Interpolated grid: dx=1.200 mm, dy=1.200 mm

Maximum value of SAR (interpolated) = 0.914 W/kg

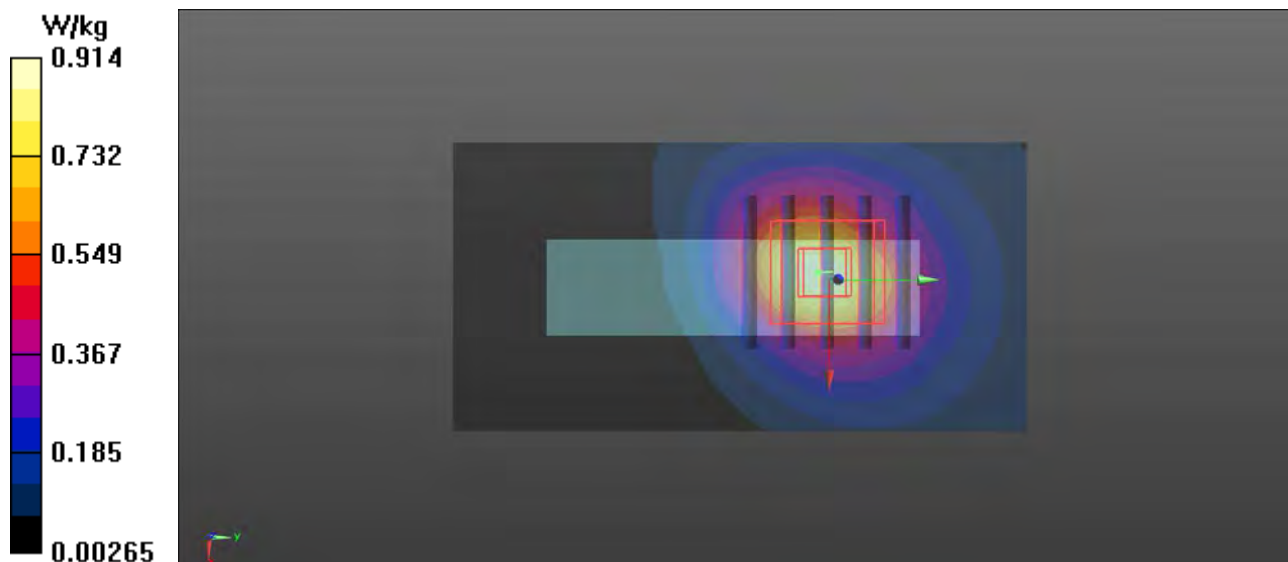
- **Zoom Scan (5x5x7)/Cube 0:** Measurement grid: dx=8mm, dy=8mm, dz=5mm

Reference Value = 12.99 V/m; Power Drift = -0.05 dB

Peak SAR (extrapolated) = 1.08 W/kg

SAR(1 g) = 0.582 W/kg; SAR(10 g) = 0.311 W/kg

Maximum value of SAR (measured) = 0.909 W/kg



P45 LTE 38_QPSK20M_Rear Face_1cm_Ch38150_1RB_OS0

DUT: 171201W001

Communication System: LTE; Frequency: 2610 MHz; Duty Cycle: 1:1.58

Medium: B2600_1205 Medium parameters used: $f = 2610$ MHz; $\sigma = 2.213$ S/m; $\epsilon_r = 52.32$; $\rho = 1000$ kg/m³

Ambient Temperature : 23.1 °C; Liquid Temperature : 22.4 °C

DASY5 Configuration:

- Probe: EX3DV4 - SN3873; ConvF(7.19, 7.19, 7.19); Calibrated: 2017/08/25;
- Sensor-Surface: 1.4mm (Mechanical Surface Detection)
- Electronics: DAE4 Sn1341; Calibrated: 2017/08/23
- Phantom: ELI v5.0; Type: QDOVA002AA; Serial: TP:1205
- Measurement SW: DASY52, Version 52.8 (8); SEMCAD X Version 14.6.10 (7331)

- **Area Scan (111x181x1)**: Interpolated grid: $dx=1.200$ mm, $dy=1.200$ mm

Maximum value of SAR (interpolated) = 0.756 W/kg

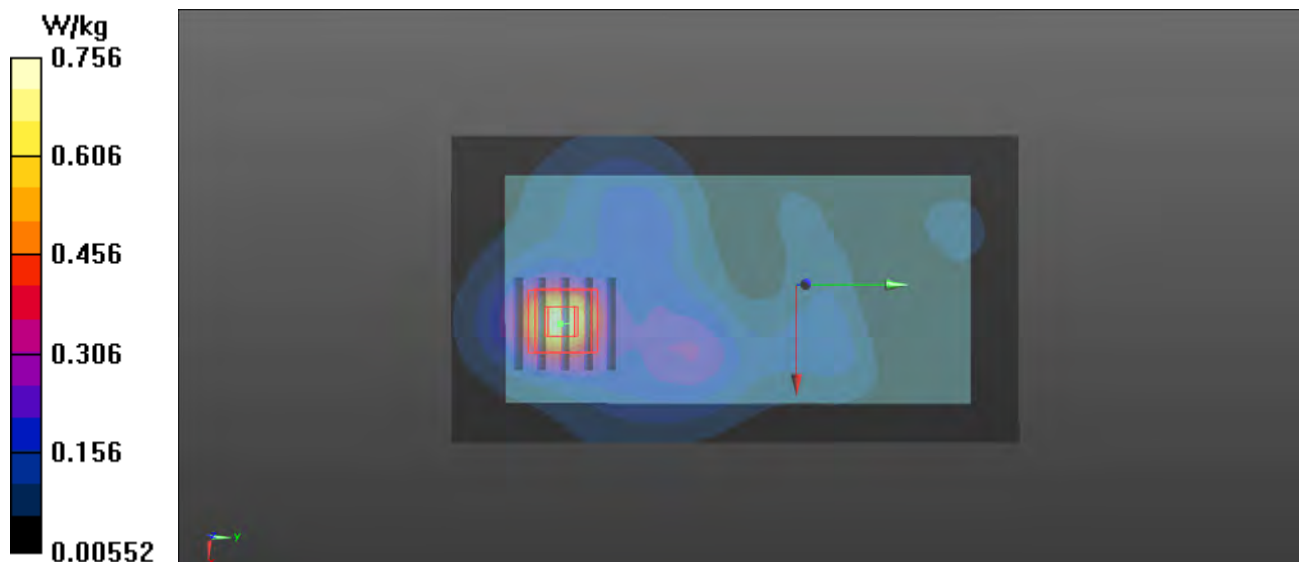
- **Zoom Scan (5x5x7)/Cube 0**: Measurement grid: $dx=8$ mm, $dy=8$ mm, $dz=5$ mm

Reference Value = 3.852 V/m; Power Drift = 0.02 dB

Peak SAR (extrapolated) = 0.976 W/kg

SAR(1 g) = 0.446 W/kg; SAR(10 g) = 0.218 W/kg

Maximum value of SAR (measured) = 0.787 W/kg



P46 LTE 40_QPSK10M_Bottom Side_1cm_Ch38750_1RB_OS0

DUT: 171201W001

Communication System: LTE; Frequency: 2310 MHz; Duty Cycle: 1:1.58

Medium: B2300_1202 Medium parameters used: $f = 2310$ MHz; $\sigma = 1.81$ S/m; $\epsilon_r = 51.345$; $\rho = 1000$ kg/m³

Ambient Temperature : 23.3 °C; Liquid Temperature : 22.3 °C

DASY5 Configuration:

- Probe: EX3DV4 - SN3873; ConvF(7.56, 7.56, 7.56); Calibrated: 2017/08/25;
- Sensor-Surface: 1.4mm (Mechanical Surface Detection)
- Electronics: DAE4 Sn1341; Calibrated: 2017/08/23
- Phantom: ELI v5.0; Type: QDOVA002AA; Serial: TP:1205
- Measurement SW: DASY52, Version 52.8 (8); SEMCAD X Version 14.6.10 (7331)

- **Area Scan (51x101x1):** Interpolated grid: dx=1.200 mm, dy=1.200 mm

Maximum value of SAR (interpolated) = 0.917 W/kg

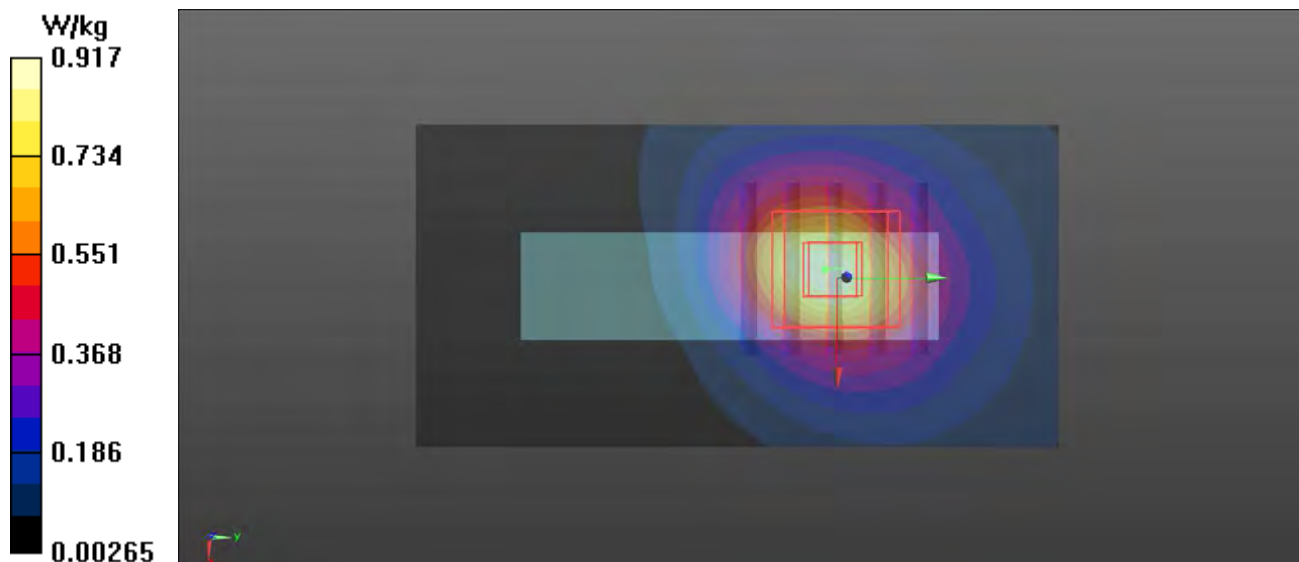
- **Zoom Scan (5x5x7)/Cube 0:** Measurement grid: dx=8mm, dy=8mm, dz=5mm

Reference Value = 13.00 V/m; Power Drift = 0.01 dB

Peak SAR (extrapolated) = 1.09 W/kg

SAR(1 g) = 0.455 W/kg; SAR(10 g) = 0.242 W/kg

Maximum value of SAR (measured) = 0.913 W/kg



P47 LTE 41_QPSK20M_Rear Face_1cm_Ch41490_1RB_OS0

DUT: 171201W001

Communication System: LTE; Frequency: 2680 MHz; Duty Cycle: 1:1.58

Medium: B2600_1205 Medium parameters used: $f = 2680$ MHz; $\sigma = 2.309$ S/m; $\epsilon_r = 52.122$; $\rho = 1000$ kg/m³

Ambient Temperature : 23.1 °C ; Liquid Temperature : 22.4 °C

DASY5 Configuration:

- Probe: EX3DV4 - SN3873; ConvF(7.19, 7.19, 7.19); Calibrated: 2017/08/25;
- Sensor-Surface: 1.4mm (Mechanical Surface Detection)
- Electronics: DAE4 Sn1341; Calibrated: 2017/08/23
- Phantom: ELI v5.0; Type: QDOVA002AA; Serial: TP:1205
- Measurement SW: DASY52, Version 52.8 (8); SEMCAD X Version 14.6.10 (7331)

- **Area Scan (91x151x1):** Interpolated grid: dx=1.200 mm, dy=1.200 mm

Maximum value of SAR (interpolated) = 0.896 W/kg

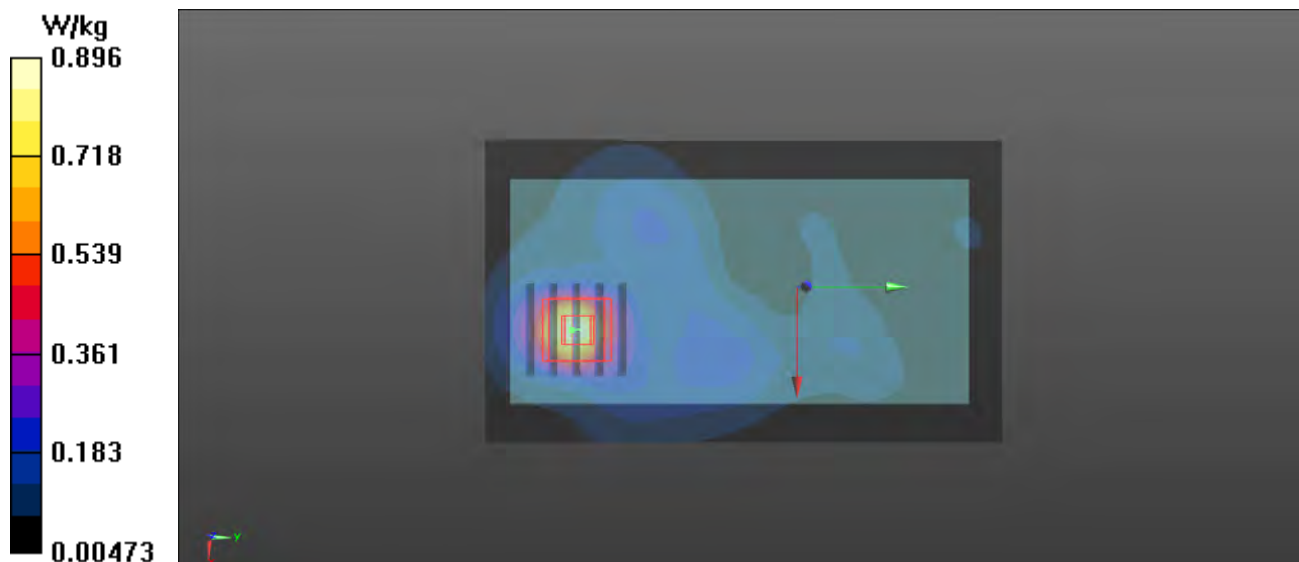
- **Zoom Scan (5x5x7)/Cube 0:** Measurement grid: dx=8mm, dy=8mm, dz=5mm

Reference Value = 4.900 V/m; Power Drift = -0.06 dB

Peak SAR (extrapolated) = 1.11 W/kg

SAR(1 g) = 0.467 W/kg; SAR(10 g) = 0.231 W/kg

Maximum value of SAR (measured) = 0.875 W/kg



P48 LTE 66_QPSK20M_Rear Face_1cm_Ch132572_1RB_OS0

DUT: 171201W001

Communication System: LTE; Frequency: 1770 MHz; Duty Cycle: 1:1

Medium: B1750_1128 Medium parameters used: $f = 1770$ MHz; $\sigma = 1.503$ S/m; $\epsilon_r = 52.328$; $\rho = 1000$ kg/m³

Ambient Temperature : 23.2 °C ; Liquid Temperature : 22.2 °C

DASY5 Configuration:

- Probe: EX3DV4 - SN3873; ConvF(8.04, 8.04, 8.04); Calibrated: 2017/08/25;
- Sensor-Surface: 1.4mm (Mechanical Surface Detection)
- Electronics: DAE4 Sn1341; Calibrated: 2017/08/23
- Phantom: Front Phantom with CRP v5.0; Type: QD000P40CD; Serial: TP:1695
- Measurement SW: DASY52, Version 52.8 (8); SEMCAD X Version 14.6.10 (7331)

- **Area Scan (71x121x1):** Interpolated grid: dx=1.500 mm, dy=1.500 mm

Maximum value of SAR (interpolated) = 1.87 W/kg

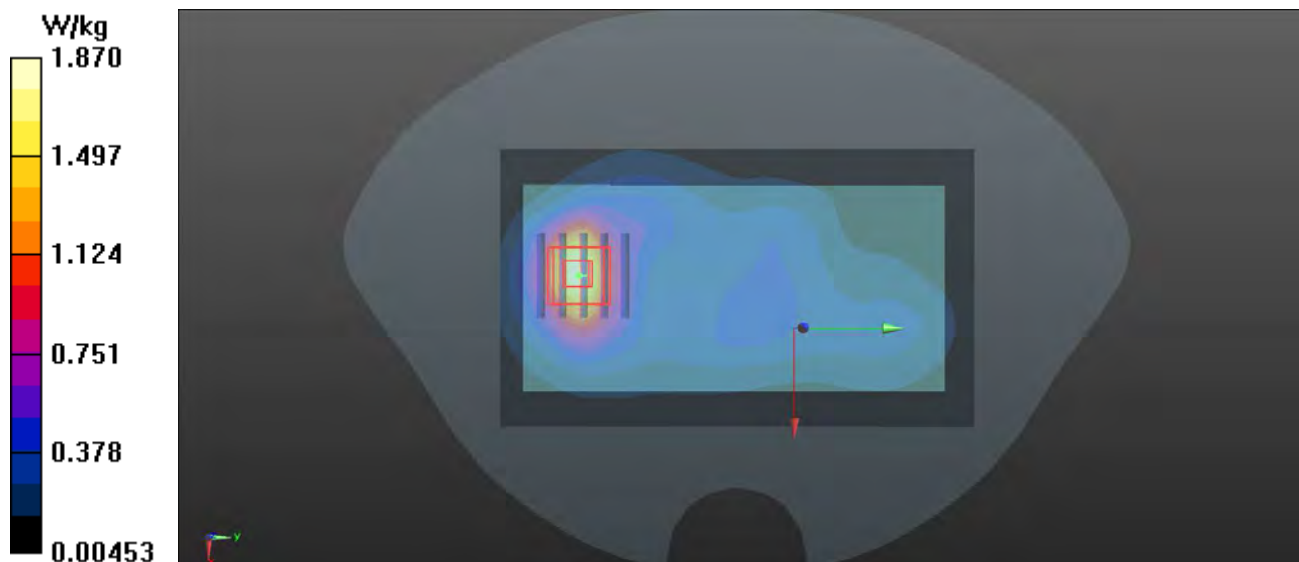
- **Zoom Scan (5x5x7)/Cube 0:** Measurement grid: dx=8mm, dy=8mm, dz=5mm

Reference Value = 14.49 V/m; Power Drift = -0.04 dB

Peak SAR (extrapolated) = 2.11 W/kg

SAR(1 g) = 1.21 W/kg; SAR(10 g) = 0.698 W/kg

Maximum value of SAR (measured) = 1.82 W/kg



P49 802.11b_Rear Face_1cm_Ch1

DUT: 171201W001

Communication System: 802.11b; Frequency: 2412 MHz; Duty Cycle: 1:1

Medium: B2450_1203 Medium parameters used: $f = 2412$ MHz; $\sigma = 1.97$ S/m; $\epsilon_r = 53.453$; $\rho = 1000$ kg/m³

Ambient Temperature : 22.7 °C; Liquid Temperature : 21.8 °C

DASY5 Configuration:

- Probe: EX3DV4 - SN3873; ConvF(7.45, 7.45, 7.45); Calibrated: 2017/08/25;
- Sensor-Surface: 1.4mm (Mechanical Surface Detection)
- Electronics: DAE4 Sn1341; Calibrated: 2017/08/23
- Phantom: ELI v5.0; Type: QDOVA002AA; Serial: TP:1205
- Measurement SW: DASY52, Version 52.8 (8); SEMCAD X Version 14.6.10 (7331)

- **Area Scan (91x151x1)**: Interpolated grid: dx=1.200 mm, dy=1.200 mm

Maximum value of SAR (interpolated) = 0.267 W/kg

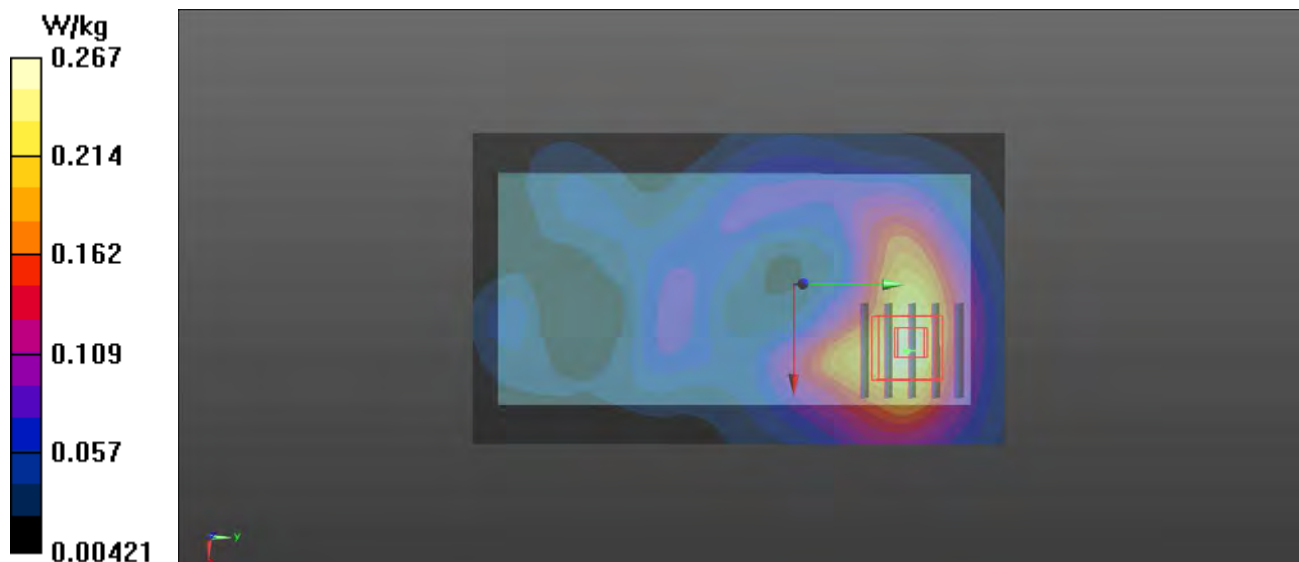
- **Zoom Scan (5x5x7)/Cube 0**: Measurement grid: dx=8mm, dy=8mm, dz=5mm

Reference Value = 3.670 V/m; Power Drift = -0.09 dB

Peak SAR (extrapolated) = 0.318 W/kg

SAR(1 g) = 0.143 W/kg; SAR(10 g) = 0.088 W/kg

Maximum value of SAR (measured) = 0.258 W/kg



P50 802.11a_Rear Face_1cm_Ch48

DUT: 171201W001

Communication System: 802.11a; Frequency: 5240 MHz; Duty Cycle: 1:1

Medium: B5G_1209 Medium parameters used: $f = 5240$ MHz; $\sigma = 5.244$ S/m; $\epsilon_r = 51.014$; $\rho = 1000$ kg/m³

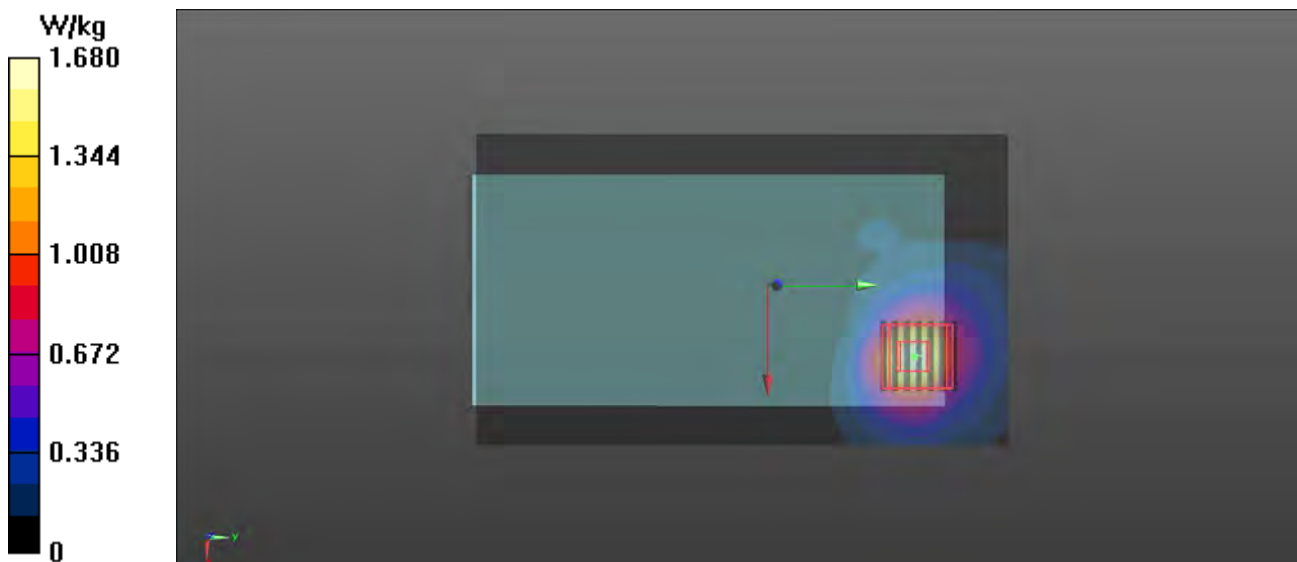
Ambient Temperature : 23.1 °C; Liquid Temperature : 22.4 °C

DASY5 Configuration:

- Probe: EX3DV4 - SN3873; ConvF(4.61, 4.61, 4.61); Calibrated: 2017/08/25;
- Sensor-Surface: 1.4mm (Mechanical Surface Detection)
- Electronics: DAE4 Sn1341; Calibrated: 2017/08/23
- Phantom: ELI v5.0; Type: QDOVA002AA; Serial: TP:1205
- Measurement SW: DASY52, Version 52.8 (8); SEMCAD X Version 14.6.10 (7331)

- **Area Scan (111x181x1)**: Interpolated grid: dx=1.000 mm, dy=1.000 mm
Maximum value of SAR (interpolated) = 1.68 W/kg

- **Zoom Scan (7x7x12)/Cube 0**: Measurement grid: dx=4mm, dy=4mm, dz=2mm
Reference Value = 1.841 V/m; Power Drift = 0.02 dB
Peak SAR (extrapolated) = 2.92 W/kg
SAR(1 g) = 0.765 W/kg; SAR(10 g) = 0.299 W/kg
Maximum value of SAR (measured) = 1.70 W/kg



P51 802.11n_HT40_Rear Face_1cm_Ch151

DUT: 171201W001

Communication System: 802.11n; Frequency: 5755 MHz; Duty Cycle: 1:1

Medium: B5G_1211 Medium parameters used: $f = 5755$ MHz; $\sigma = 6.028$ S/m; $\epsilon_r = 47.972$; $\rho = 1000$ kg/m³

Ambient Temperature : 23.3 °C; Liquid Temperature : 22.2 °C

DASY5 Configuration:

- Probe: EX3DV4 - SN3873; ConvF(4.16, 4.16, 4.16); Calibrated: 2017/08/25;
- Sensor-Surface: 1.4mm (Mechanical Surface Detection)
- Electronics: DAE4 Sn1341; Calibrated: 2017/08/23
- Phantom: ELI v5.0; Type: QDOVA002AA; Serial: TP:1205
- Measurement SW: DASY52, Version 52.8 (8); SEMCAD X Version 14.6.10 (7331)

- **Area Scan (111x181x1)**: Interpolated grid: dx=1.000 mm, dy=1.000 mm
Maximum value of SAR (interpolated) = 1.23 W/kg

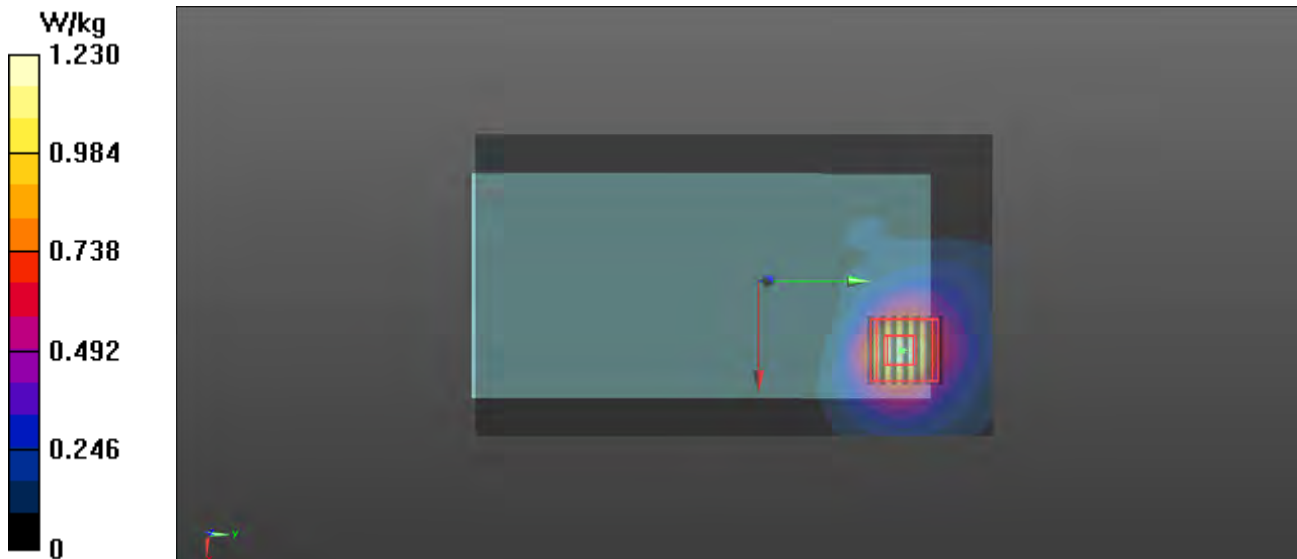
- **Zoom Scan (7x7x12)/Cube 0**: Measurement grid: dx=4mm, dy=4mm, dz=2mm

Reference Value = 0.5400 V/m; Power Drift = 0.04 dB

Peak SAR (extrapolated) = 2.05 W/kg

SAR(1 g) = 0.471 W/kg; SAR(10 g) = 0.178 W/kg

Maximum value of SAR (measured) = 1.15 W/kg



P52 BT_GFSK_Rear Face_1cm_Ch39

DUT: 171201W001

Communication System: BT; Frequency: 2441 MHz; Duty Cycle: 1:1

Medium: B2450_1203 Medium parameters used: $f = 2441$ MHz; $\sigma = 2.01$ S/m; $\epsilon_r = 53.397$; $\rho = 1000$ kg/m³

Ambient Temperature : 22.7 °C; Liquid Temperature : 21.8 °C

DASY5 Configuration:

- Probe: EX3DV4 - SN3873; ConvF(7.45, 7.45, 7.45); Calibrated: 2017/08/25;
- Sensor-Surface: 1.4mm (Mechanical Surface Detection)
- Electronics: DAE4 Sn1341; Calibrated: 2017/08/23
- Phantom: Front Phantom with CRP v5.0; Type: QD000P40CD; Serial: TP:1695
- Measurement SW: DASY52, Version 52.8 (8); SEMCAD X Version 14.6.10 (7331)

- **Area Scan (91x151x1):** Interpolated grid: dx=1.200 mm, dy=1.200 mm

Maximum value of SAR (interpolated) = 0.0556 W/kg

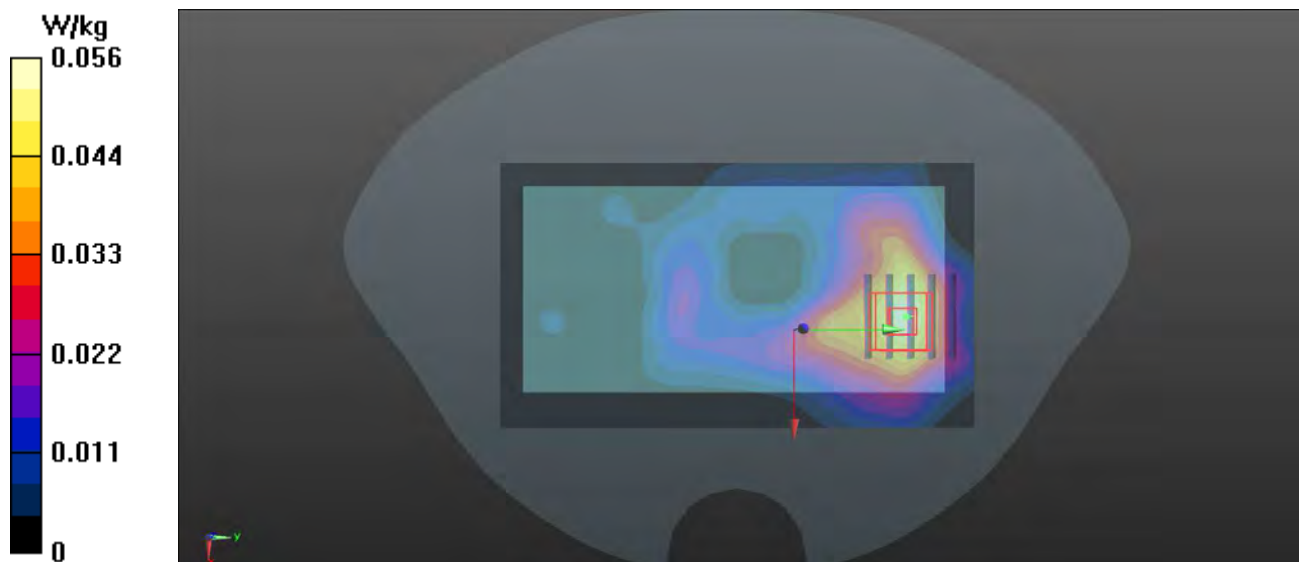
- **Zoom Scan (5x5x7)/Cube 0:** Measurement grid: dx=8mm, dy=8mm, dz=5mm

Reference Value = 1.514 V/m; Power Drift = 0.02 dB

Peak SAR (extrapolated) = 0.0820 W/kg

SAR(1 g) = 0.039 W/kg; SAR(10 g) = 0.021 W/kg

Maximum value of SAR (measured) = 0.0644 W/kg



P53 WCDMA II_RMC12.2K_Rear Face_0cm_Ch9538

DUT: 171201W001

Communication System: WCDMA; Frequency: 1907.6 MHz; Duty Cycle: 1:1

Medium: B1900_1129 Medium parameters used: $f = 1907.6$ MHz; $\sigma = 1.547$ S/m; $\epsilon_r = 51.961$; $\rho = 1000$ kg/m³

Ambient Temperature : 23.5 °C ; Liquid Temperature : 22.3 °C

DASY5 Configuration:

- Probe: EX3DV4 - SN3873; ConvF(7.77, 7.77, 7.77); Calibrated: 2017/08/25;
- Sensor-Surface: 1.4mm (Mechanical Surface Detection)
- Electronics: DAE4 Sn1341; Calibrated: 2017/08/23
- Phantom: Front Phantom with CRP v5.0; Type: QD000P40CD; Serial: TP:1695
- Measurement SW: DASY52, Version 52.8 (8); SEMCAD X Version 14.6.10 (7331)

- **Area Scan (71x131x1)**: Interpolated grid: dx=1.500 mm, dy=1.500 mm

Maximum value of SAR (interpolated) = 10.5 W/kg

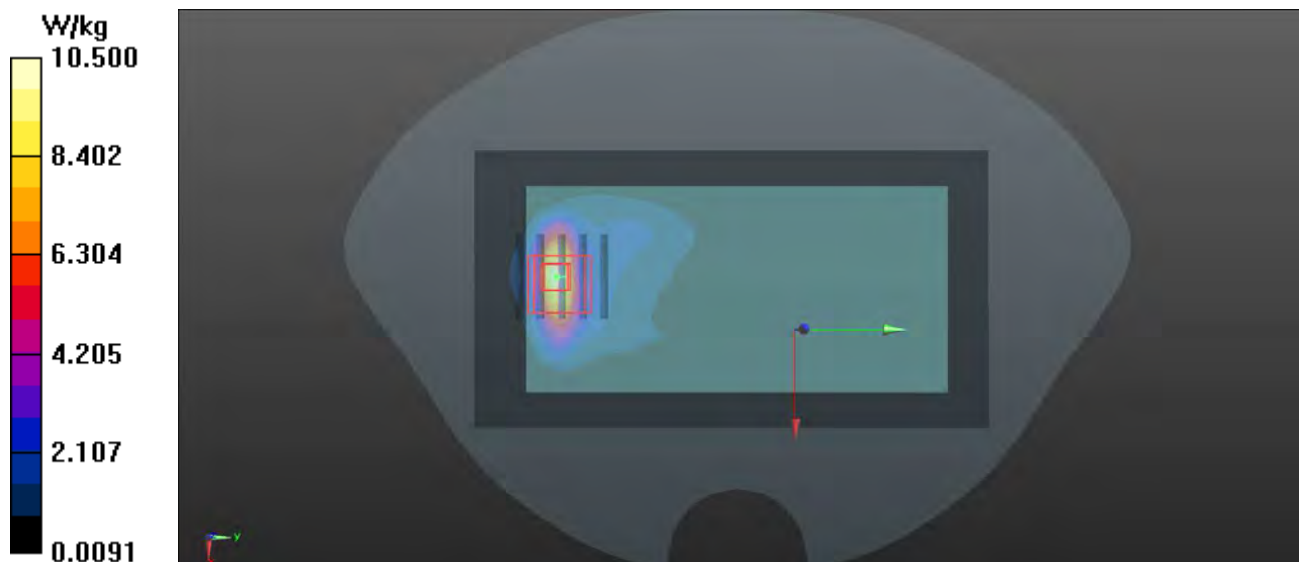
- **Zoom Scan (5x5x7)/Cube 0**: Measurement grid: dx=8mm, dy=8mm, dz=5mm

Reference Value = 13.03 V/m; Power Drift = -0.02 dB

Peak SAR (extrapolated) = 13.0 W/kg

SAR(1 g) = 6.7 W/kg; SAR(10 g) = 3.15 W/kg

Maximum value of SAR (measured) = 10.9 W/kg



P54 WCDMA IV_RMC12.2K_Rear Face_0cm_Ch1513

DUT: 171201W001

Communication System: WCDMA; Frequency: 1752.6 MHz; Duty Cycle: 1:1

Medium: B1750_1127 Medium parameters used: $f = 1753$ MHz; $\sigma = 1.495$ S/m; $\epsilon_r = 51.965$; $\rho = 1000$ kg/m³

Ambient Temperature : 23.2 °C ; Liquid Temperature : 22.2 °C

DASY5 Configuration:

- Probe: EX3DV4 - SN3873; ConvF(8.04, 8.04, 8.04); Calibrated: 2017/08/25;
- Sensor-Surface: 1.4mm (Mechanical Surface Detection)
- Electronics: DAE4 Sn1341; Calibrated: 2017/08/23
- Phantom: Front Phantom with CRP v5.0; Type: QD000P40CD; Serial: TP:1695
- Measurement SW: DASY52, Version 52.8 (8); SEMCAD X Version 14.6.10 (7331)

- **Area Scan (71x131x1):** Interpolated grid: dx=1.500 mm, dy=1.500 mm

Maximum value of SAR (interpolated) = 9.91 W/kg

- **Zoom Scan (5x5x7)/Cube 0:** Measurement grid: dx=8mm, dy=8mm, dz=5mm

Reference Value = 16.08 V/m; Power Drift = -0.01 dB

Peak SAR (extrapolated) = 11.9 W/kg

SAR(1 g) = 5.76 W/kg; SAR(10 g) = 2.85 W/kg

Maximum value of SAR (measured) = 9.88 W/kg



P55 LTE 4_QPSK20M_Rear Face_0cm_Ch20050_1RB_OS0

DUT: 171201W001

Communication System: LTE; Frequency: 1720 MHz; Duty Cycle: 1:1

Medium: B1750_1128 Medium parameters used: $f = 1720$ MHz; $\sigma = 1.459$ S/m; $\epsilon_r = 52.055$; $\rho = 1000$ kg/m³

Ambient Temperature : 23.2 °C ; Liquid Temperature : 22.2 °C

DASY5 Configuration:

- Probe: EX3DV4 - SN3873; ConvF(8.04, 8.04, 8.04); Calibrated: 2017/08/25;
- Sensor-Surface: 1.4mm (Mechanical Surface Detection)
- Electronics: DAE4 Sn1341; Calibrated: 2017/08/23
- Phantom: Front Phantom with CRP v5.0; Type: QD000P40CD; Serial: TP:1695
- Measurement SW: DASY52, Version 52.8 (8); SEMCAD X Version 14.6.10 (7331)

- **Area Scan (71x131x1):** Interpolated grid: dx=1.500 mm, dy=1.500 mm
Maximum value of SAR (interpolated) = 10.0 W/kg

- **Zoom Scan (5x5x7)/Cube 0:** Measurement grid: dx=8mm, dy=8mm, dz=5mm
Reference Value = 14.51 V/m; Power Drift = -0.05 dB
Peak SAR (extrapolated) = 11.0 W/kg
SAR(1 g) = 5.51 W/kg; SAR(10 g) = 2.76 W/kg
Maximum value of SAR (measured) = 9.17 W/kg



P56 LTE 7_QPSK20M_Rear Face_0cm_Ch20850_1RB_OS0

DUT: 171201W001

Communication System: LTE; Frequency: 2510 MHz; Duty Cycle: 1:1

Medium: B2600_1205 Medium parameters used: $f = 2510$ MHz; $\sigma = 1.99$ S/m; $\epsilon_r = 51.05$; $\rho = 1000$ kg/m³

Ambient Temperature : 23.1 °C; Liquid Temperature : 22.4 °C

DASY5 Configuration:

- Probe: EX3DV4 - SN3873; ConvF(7.19, 7.19, 7.19); Calibrated: 2017/08/25;
- Sensor-Surface: 1.4mm (Mechanical Surface Detection)
- Electronics: DAE4 Sn1341; Calibrated: 2017/08/23
- Phantom: ELI v5.0; Type: QDOVA002AA; Serial: TP:1205
- Measurement SW: DASY52, Version 52.8 (8); SEMCAD X Version 14.6.10 (7331)

- **Area Scan (91x161x1)**: Interpolated grid: dx=1.200 mm, dy=1.200 mm

Maximum value of SAR (interpolated) = 2.73 W/kg

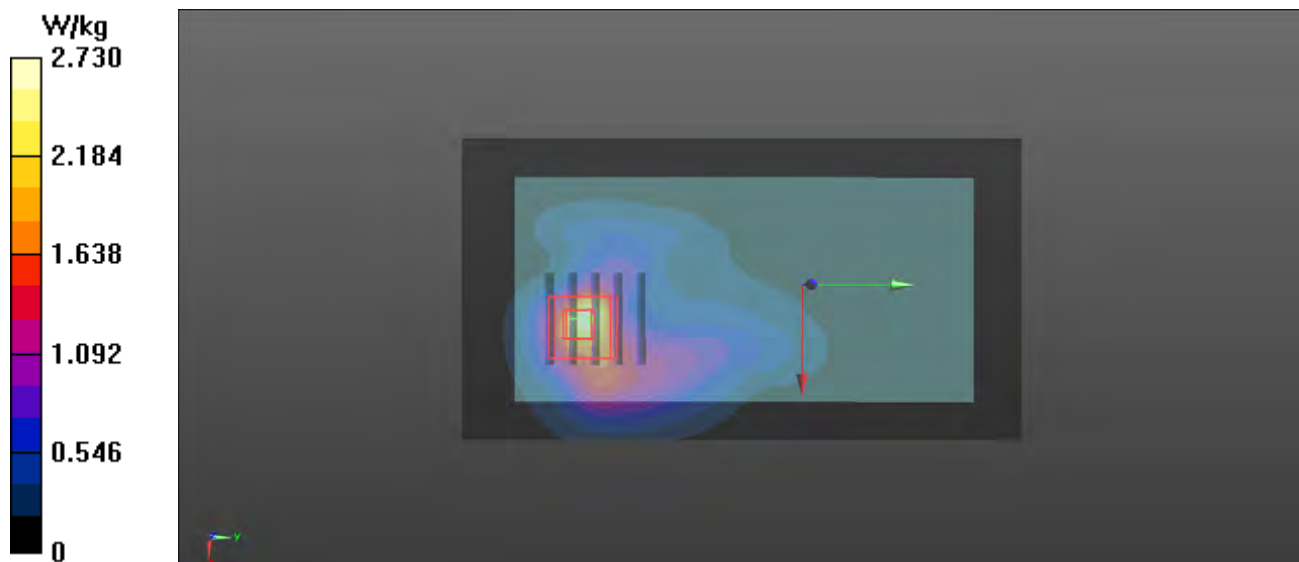
- **Zoom Scan (5x5x7)/Cube 0**: Measurement grid: dx=8mm, dy=8mm, dz=5mm

Reference Value = 10.18 V/m; Power Drift = -0.01 dB

Peak SAR (extrapolated) = 4.48 W/kg

SAR(1 g) = 1.91 W/kg; SAR(10 g) = 0.811 W/kg

Maximum value of SAR (measured) = 3.00 W/kg



P57 LTE 25_QPSK20M_Rear Face_0cm_Ch26590_1RB_OS0

DUT: 171201W001

Communication System: LTE; Frequency: 1905 MHz; Duty Cycle: 1:1

Medium: B1900_1130 Medium parameters used: $f = 1905$ MHz; $\sigma = 1.552$ S/m; $\epsilon_r = 52.403$; $\rho = 1000$ kg/m³

Ambient Temperature : 23.5 °C ; Liquid Temperature : 22.3 °C

DASY5 Configuration:

- Probe: EX3DV4 - SN3873; ConvF(7.77, 7.77, 7.77); Calibrated: 2017/08/25;
- Sensor-Surface: 1.4mm (Mechanical Surface Detection)
- Electronics: DAE4 Sn1341; Calibrated: 2017/08/23
- Phantom: Front Phantom with CRP v5.0; Type: QD000P40CD; Serial: TP:1695
- Measurement SW: DASY52, Version 52.8 (8); SEMCAD X Version 14.6.10 (7331)

- **Area Scan (71x121x1):** Interpolated grid: dx=1.500 mm, dy=1.500 mm

Maximum value of SAR (interpolated) = 10.6 W/kg

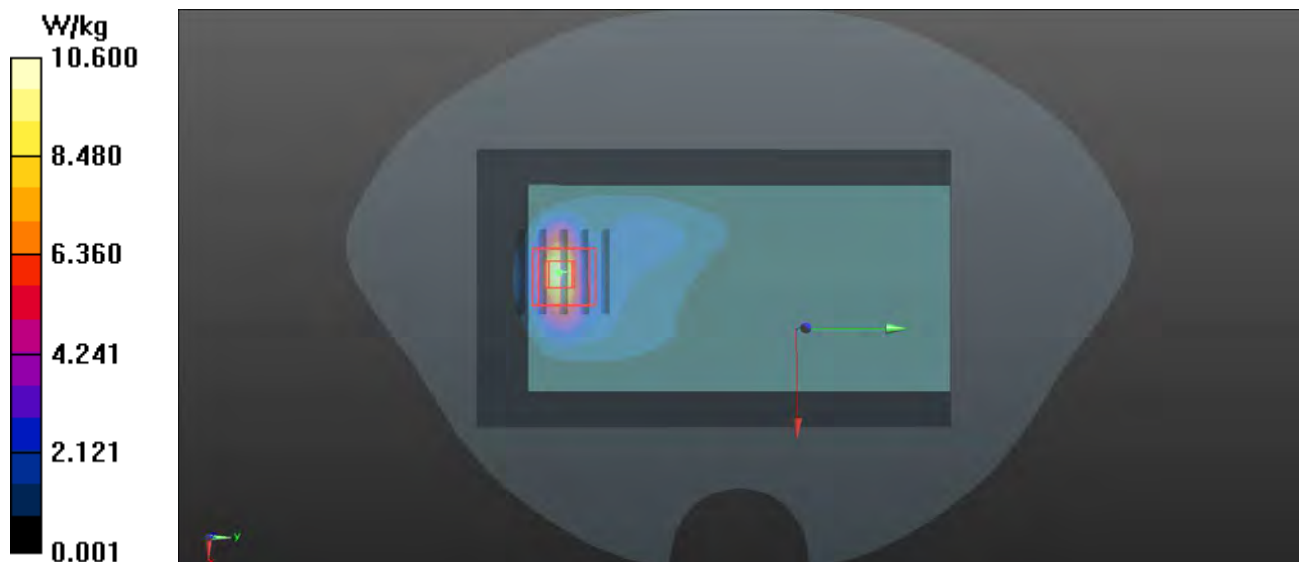
- **Zoom Scan (5x5x7)/Cube 0:** Measurement grid: dx=8mm, dy=8mm, dz=5mm

Reference Value = 12.09 V/m; Power Drift = 0.01 dB

Peak SAR (extrapolated) = 12.0 W/kg

SAR(1 g) = 6.21 W/kg; SAR(10 g) = 2.94 W/kg

Maximum value of SAR (measured) = 10.1 W/kg



P58 LTE 66_QPSK20M_Rear Face_0cm_Ch132322_1RB_OS0

DUT: 171201W001

Communication System: LTE; Frequency: 1745 MHz; Duty Cycle: 1:1

Medium: B1750_1128 Medium parameters used: $f = 1745$ MHz; $\sigma = 1.473$ S/m; $\epsilon_r = 52.395$; $\rho = 1000$ kg/m³

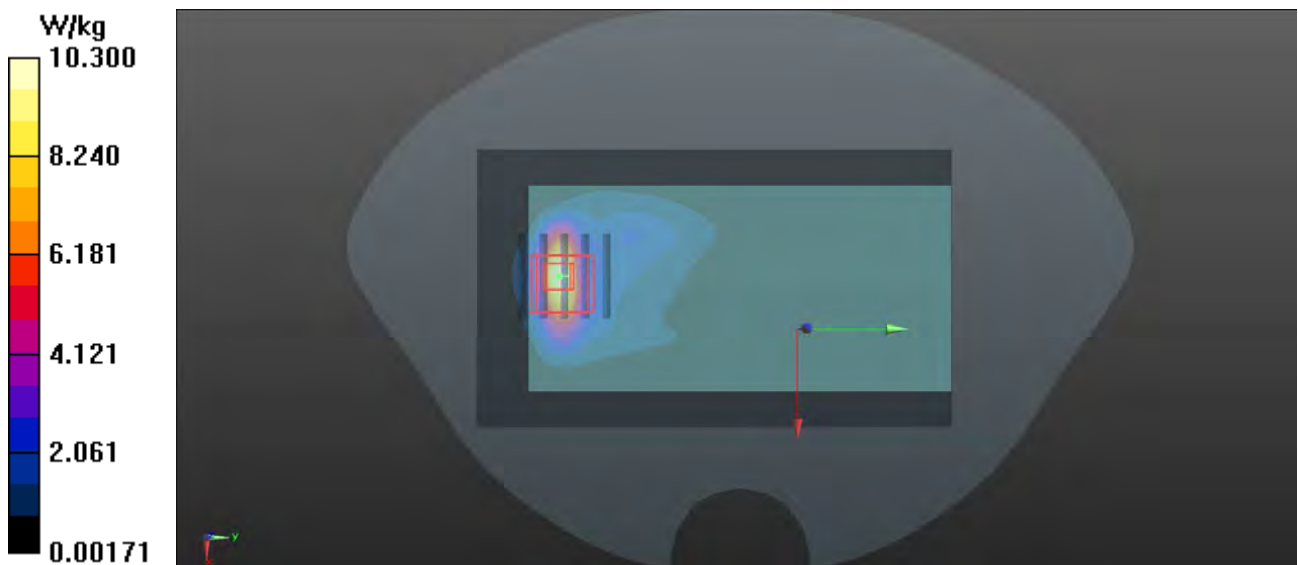
Ambient Temperature : 23.2 °C ; Liquid Temperature : 22.2 °C

DASY5 Configuration:

- Probe: EX3DV4 - SN3873; ConvF(8.04, 8.04, 8.04); Calibrated: 2017/08/25;
- Sensor-Surface: 1.4mm (Mechanical Surface Detection)
- Electronics: DAE4 Sn1341; Calibrated: 2017/08/23
- Phantom: Front Phantom with CRP v5.0; Type: QD000P40CD; Serial: TP:1695
- Measurement SW: DASY52, Version 52.8 (8); SEMCAD X Version 14.6.10 (7331)

- **Area Scan (71x131x1):** Interpolated grid: dx=1.500 mm, dy=1.500 mm
Maximum value of SAR (interpolated) = 10.3 W/kg

- **Zoom Scan (5x5x7)/Cube 0:** Measurement grid: dx=8mm, dy=8mm, dz=5mm
Reference Value = 14.73 V/m; Power Drift = -0.01 dB
Peak SAR (extrapolated) = 11.2 W/kg
SAR(1 g) = 5.69 W/kg; SAR(10 g) = 2.83 W/kg
Maximum value of SAR (measured) = 9.42 W/kg



P59 802.11n_HT20_Rear Face_0cm_Ch60

DUT: 171201W001

Communication System: 802.11n; Frequency: 5300 MHz; Duty Cycle: 1:1

Medium: B5G_1209 Medium parameters used: $f = 5300$ MHz; $\sigma = 5.413$ S/m; $\epsilon_r = 48.764$; $\rho = 1000$ kg/m³

Ambient Temperature : 23.1 °C ; Liquid Temperature : 22.4 °C

DASY5 Configuration:

- Probe: EX3DV4 - SN3873; ConvF(4.61, 4.61, 4.61); Calibrated: 2017/08/25;
- Sensor-Surface: 1.4mm (Mechanical Surface Detection)
- Electronics: DAE4 Sn1341; Calibrated: 2017/08/23
- Phantom: ELI v5.0; Type: QDOVA002AA; Serial: TP:1205
- Measurement SW: DASY52, Version 52.8 (8); SEMCAD X Version 14.6.10 (7331)

- **Area Scan (111x201x1)**: Interpolated grid: dx=1.000 mm, dy=1.000 mm

Maximum value of SAR (interpolated) = 6.64 W/kg

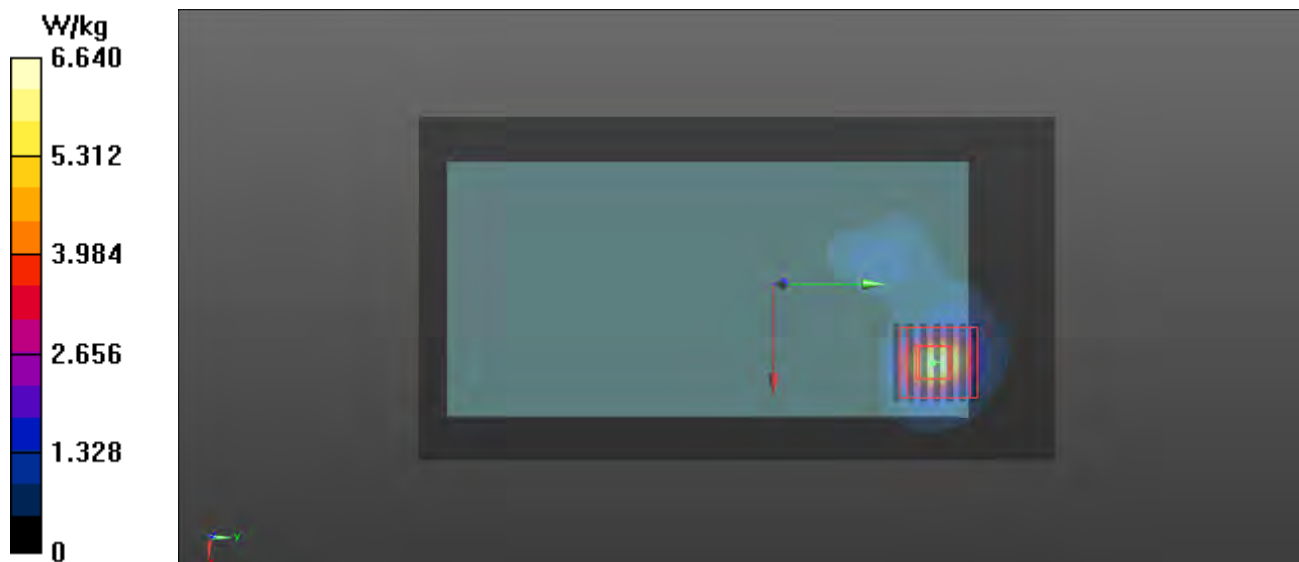
- **Zoom Scan (7x7x12)/Cube 0**: Measurement grid: dx=4mm, dy=4mm, dz=2mm

Reference Value = 1.118 V/m; Power Drift = -0.02 dB

Peak SAR (extrapolated) = 22.7 W/kg

SAR(1 g) = 4.42 W/kg; SAR(10 g) = 1.12 W/kg

Maximum value of SAR (measured) = 11.8 W/kg



P60 802.11n_HT40_Rear Face_0cm_Ch134

DUT: 171201W001

Communication System: 802.11n; Frequency: 5670 MHz; Duty Cycle: 1:1

Medium: B5G_1210 Medium parameters used: $f = 5670$ MHz; $\sigma = 5.953$ S/m; $\epsilon_r = 50.046$; $\rho = 1000$ kg/m³

Ambient Temperature : 23.3 °C ; Liquid Temperature : 22.1 °C

DASY5 Configuration:

- Probe: EX3DV4 - SN3873; ConvF(3.9, 3.9, 3.9); Calibrated: 2017/08/25;
- Sensor-Surface: 1.4mm (Mechanical Surface Detection)
- Electronics: DAE4 Sn1341; Calibrated: 2017/08/23
- Phantom: ELI v5.0; Type: QDOVA002AA; Serial: TP:1205
- Measurement SW: DASY52, Version 52.8 (8); SEMCAD X Version 14.6.10 (7331)

- **Area Scan (111x201x1)**: Interpolated grid: dx=1.000 mm, dy=1.000 mm

Maximum value of SAR (interpolated) = 5.03 W/kg

- **Zoom Scan (7x7x12)/Cube 0**: Measurement grid: dx=4mm, dy=4mm, dz=2mm

Reference Value = 0 V/m; Power Drift = 0.01 dB

Peak SAR (extrapolated) = 15.9 W/kg

SAR(1 g) = 3.08 W/kg; SAR(10 g) = 0.786 W/kg

Maximum value of SAR (measured) = 8.81 W/kg

