

GIMA – instant messaging alert

Operating Instructions

IMA228  
instant messaging alert  
<http://www.gima.hk>  
© 2008 DMD Holdings Limited

Printed in HKSAR

GIMA Safety Instructions

Please Read the Following Operation Precautions Before Use

- Read Instructions – All safety and operating instructions should be read thoroughly before attempting to operate this USB Device.
- Retain instructions for future reference.
- Heed warnings – All warnings on this USB Device and in the operating instructions should be adhered to.
- Follow instructions – All operating and use instructions should be followed.
- TO PREVENT THE RISK OF ELECTRIC SHOCK, DO NOT REMOVE ANY OF THE SCREWS AND TRY TO DISASSEMBLE THE GIMA. THERE ARE NO SERVICEABLE PARTS INSIDE THIS UNIT.
- Do not expose the GIMA to liquid or solvent.
- Do not expose the GIMA to temperature or humidity extremes, direct sunlight, excessive dust, or vibrations.
- Place the GIMA on a stable, level surface. Do not drop, apply excessive force to the controls, or put heavy objects on top of the GIMA.
- If cleaning is required, use a soft dry cloth, If necessary, use a damp cloth without any solvents.
- Do not place the GIMA close to fluorescent light sources, or neon light fixtures.
- WARNING: To reduce the risk of fire or electric shock, do not expose the GIMA to rain, moisture or water.

GIMA

Key Features:

- Plays live motions and lighting effects and audio file upon Instant Message received
- Support 7 differences Instant Messaging software – MSN, YM, QQ, Skype, AIM, GTalk
- No Battery is required
- User configurable action
- Mood Light Mode

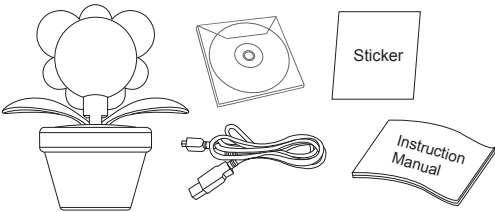
System Requirements:

- Computer runs Windows 2000, XP, Vista
- USB port (1.0 or 2.0) is required

CHOKING HAZZARD Warning:

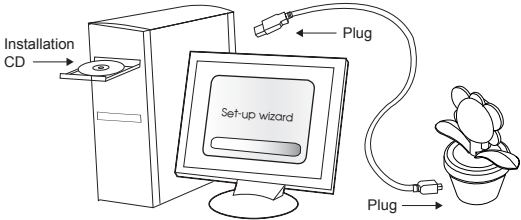
Small parts are included in the package, no suitable for children under the age of 3

GIMA Easy Setup Guide



Inside the package

- GIMA x1
- Installation CD x 1
- USB Cable x 1
- Instruction Manual x 1
- Emoticon Stick x 1



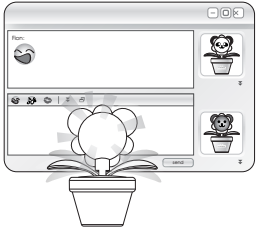
Installations

- Put the provided installation CD with GIMA. The on-screen instruction will guide you through for completed installation of GIMA manager
- Plug the GIMA to one of the USB port of your computer
- The set-up wizard window will pop up, on-screen and just follow the instruction to complete the set-up

GIMA How to Play



- GIMA will give lighting and motion effects while a particular friend is signing in



- When emoticon is sent to you, the GIMA will give different lighting & motion effects (please refer to the "Lighting and Motion" and "Emoticon" classification table)

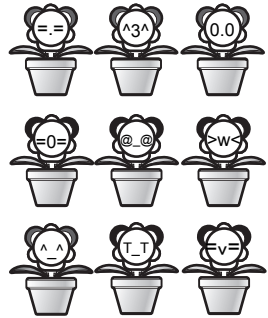


- User can configure difference particular wordings, punctuation etc... to different "Light & Motion Effect"



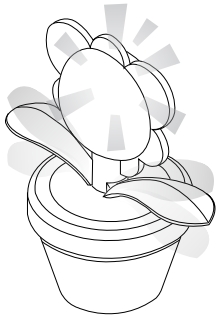
Lighting & Motion Effects

- GIMA gives 7-color lighting effects
- GIMA leaves can sway up & down



Personalize your GIMA

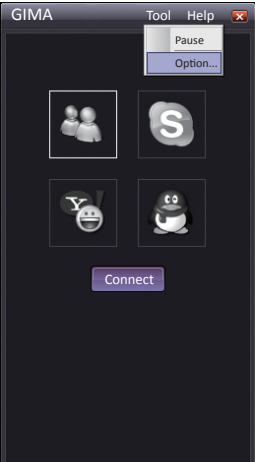
- User can use the provided Emoticon Stickers customize & personalize your own GIMA



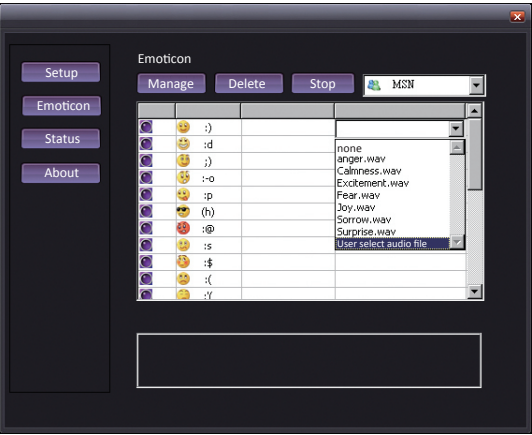
Mood Light Mode

- GIMA can turn into a mood light with 7 color flashing alternatively & loop swaying motion simultaneously

## GIMA How to link Audio file to Emoticon Effects

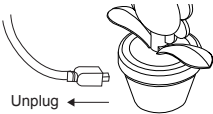


- Go to GIMA manager “Tool” pull down manual
- Go to “Option”



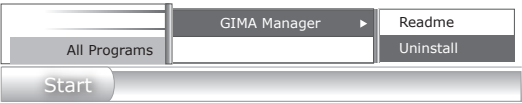
- Click "Emoticon" button
- Click "Audio" a pull down menu will be appeared with standard audio effect options, and "user select audio file"
- Then user can set whatever audio files within the computer (support: wma, mp3 and wav files)

## GIMA Removal and Uninstallation



### Removal

- Unplug the GIMA from your computer USB port



## Uninstall the GIMA Manager

- Go to "Start" pull up menu
- Go to "All Program"
- Choice the program "GIMA Manager"
- Choice "Uninstall"
- Follow the on-screen instruction to complete the whole uninstallation process

## GIMA Troubleshooting

Symptom	Possible Problem	Solution
The installation program does not run after inserted	<ul style="list-style-type: none"> <li>• the CD is not being detected by your computer</li> </ul>	<ul style="list-style-type: none"> <li>• Take the CD from the PC and re-insert again</li> <li>• Browse the CD manually on your PC CD-Drive and double click on SETUP.EXE</li> </ul>
Nothing happens after GIMA is plugged to your computer	<ul style="list-style-type: none"> <li>• USB cable is not securely plugged</li> <li>• The GIMA is not being detected by your computer</li> </ul>	<ul style="list-style-type: none"> <li>• Make sure the USB cable are securely plugged on both ends</li> <li>• Unplug the GIMA and reboot the computer, then re-plug the GIMA again</li> </ul>
No Effect upon received of message or emotion	<ul style="list-style-type: none"> <li>• Your friend's account is not on the list of the GIMA</li> </ul>	<ul style="list-style-type: none"> <li>• Make sure your friend's account is registered on the list of the GIMA, email address, not the display nickname</li> </ul>

## FCC Regulations

This device complies with Part 15 of the FCC Rules. Operation is subject to the following two conditions:

- (1) this device may not cause harmful interference, and
- (2) this device must accept any interference received, including interference that may cause undesired operation."

NOTE:  
The manufacturer is not responsible for any radio or TV interference caused by  
unauthorized modifications to this equipment.  
Such modifications could void the user authority to operate the equipment.

## GIMA Lighting & Motion Effect Classifications

Effects	Lighting & Motion Sequence
Standard	7-color (one by one without action), Swaying (for 3s)
Joy	Red -> Blue -> Green -> Red -> Blue -> Green (with swaying simultaneously)
Delight	Red -> Blue -> Green -> Swaying -> Red -> Blue -> Green
Blessing	Red -> Swaying -> Yellow -> Swaying -> Red -> Swaying -> Yellow -> Swaying
Glorify	Red -> Swaying -> Red -> Swaying -> Red -> Swaying -> Red -> Swaying
Praise	Yellow -> Swaying -> Yellow -> Swaying -> Yellow -> Swaying -> Yellow -> Swaying
Fear	Green -> Blue -> Heart -> Green -> Blue -> Heart (with Swaying simultaneously)
Panic	Blue -> Purple -> Swaying -> Blue -> Purple -> Swaying
Anxiety	Blue -> White -> Swaying -> Blue -> White -> Swaying
Excitement	Red -> Cyan -> Purple -> Red -> Cyan -> Purple (with Swaying simultaneously)
Amazement	White -> Purple -> Green -> White -> Purple -> Green (with Swaying simultaneously)
Surprise	Red (keep blinking & Swaying simultaneously)
Sorrow	Blue -> Cyan -> Swaying -> Blue -> Cyan -> Swaying -> Blue -> Cyan -> Swaying
Sadness	Purple -> Swaying -> Purple -> Swaying -> Purple -> Swaying -> Purple -> Swaying
Anger	Blue -> Red -> Swaying -> Blue -> Red -> Swaying -> Blue -> Red -> Swaying
Calmness	Green -> Swaying -> Green -> Swaying -> Green -> Swaying -> Green -> Swaying
Shocking	Swaying -> Swaying -> Swaying -> Swaying -> Swaying -> Swaying -> Swaying

## GIMA Emoticon Classifications

	QQ	YM	Skype	MSN
Joy	😄 😊	😄 😊	😄 😊	😄 😊
Delight	😊	😊 😊 😊	😊 😊	😊 😊 😊
Blessing	🙏	😊	😊	❤️ 🙏
Glorify	🙌	🙌		🙌
Praise	👉	🙌 🙌	👉	
Fear		😬	😬	😬
Panic	😬	🙌	😬	😬
Anxiety	😬		😬 😬	😬
Excitement	🙌 😊	😊	😊	
Amazement	😬	😊 😊		😊
Surprise	😬	😬	😬	😬
Sorrow	😬		😬	
Sadness	😬 😬	😬	😬	😬
Anger	😬 😬	😬	😬	😬
Calmness	😊	😊 😊	😊 😊	
Shocking	😬	🙌		😬

**NOTE:** This equipment has been tested and found to comply with the limits for a Class B digital device, pursuant to Part 15 of the FCC Rules. These limits are designed to provide reasonable protection against harmful interference in a residential installation. This equipment generates, uses and can radiate radio frequency energy and, if not installed and used in accordance with the instructions, may cause harmful interference to radio communications. However, there is no guarantee that interference will not occur in a particular installation. If this equipment does cause harmful interference to radio or television reception, which can be determined by turning the equipment off and on, the user is encouraged to try to correct the interference by one or more of the following measures:

- Reorient or relocate the receiving antenna.
- Increase the separation between the equipment and receiver.
- Connect the equipment into an outlet on a circuit different from that to which the receiver is connected.
- Consult the dealer or an experienced radio/TV technician for help.