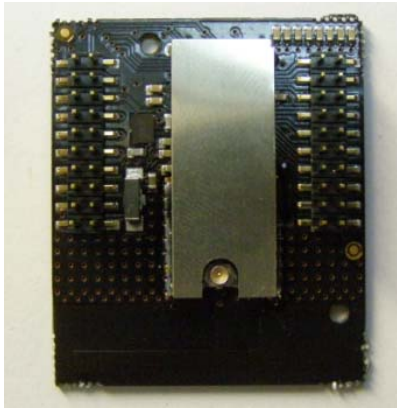


Epoke Radio module RX001

PHOTOS

Rev 0.2

Radio module



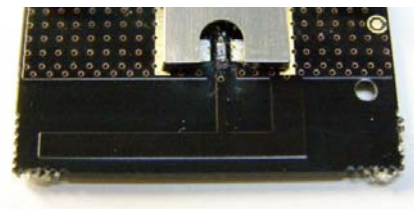
RX001 component side
(with UFL connector)



RX001 back side (visible when mounted)

Certified antennas:

- 1) built-in F-antenna on circuit board (0 ohms mounted as R1, no UFL connector)
- 2) UFL connector mounted and connected to shortened vertical dipole via 150mm UFL to RPSMA-bulk cable.
- 3) UFL connector mounted and connected to full-length vertical dipole with 130mm integrated coax cable.



1) F-antenna (No UFL connector)



2) Antenna with RPSMA
connector and cable



3) Antenna with fixed
UFL connector



Reverse polarity SMA connector
(antenna 2)



UFL connector (antenna 3)

Rev 0.1/090117/JB First issue

Rev 0.2/090318JB Photo of radio module with label updated.
Close-up photos of antenna connectors added