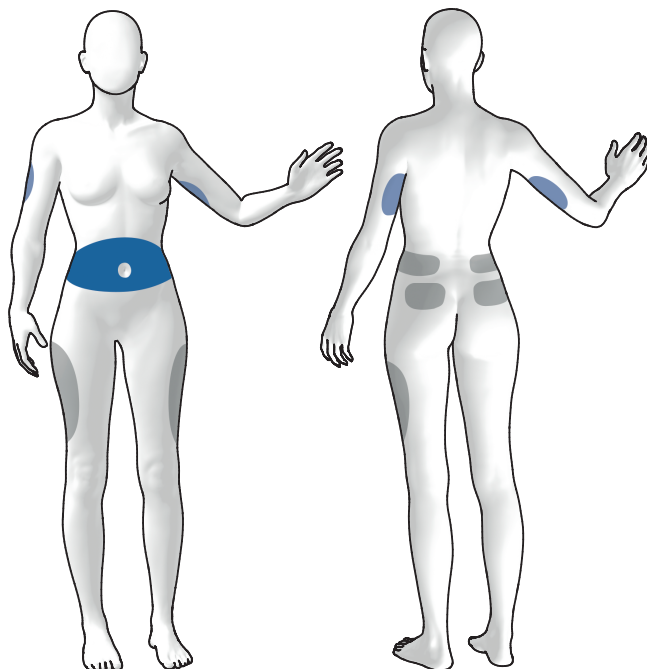


4.2 Recommended Infusion Sites



Blue areas: Recommended infusion sites
Gray areas: Possible infusion sites

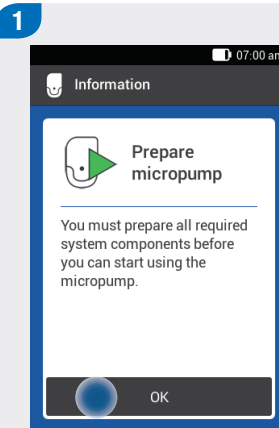
Choose a suitable infusion site before inserting a new infusion assembly. Consult your healthcare professional for advice. Sites with sufficient subcutaneous tissue are the most suitable. For example:

Infusion site	Characteristics
Abdominal region	Common infusion site with good insulin absorption.
Upper arm	Slower insulin absorption compared to the abdominal region.
Thigh	Slower insulin absorption compared to the abdominal region.
Hip, lower back, buttocks	Slower insulin absorption compared to the abdominal region. Also suitable for physically active users or if not much subcutaneous tissue is available.

Note

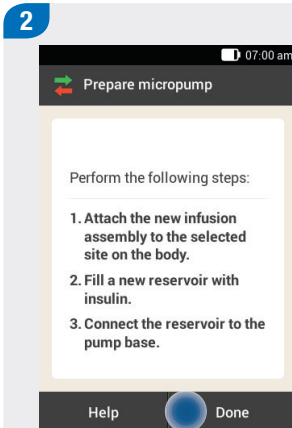
- ▶ The pump holder must not be attached to sites on the body with scars, birthmarks and moles, tattoos, injuries, bruises or rashes.
- ▶ Before you attach the pump holder to the body, the infusion site must be completely dry.
- ▶ A new infusion site must be at least 2 inches away from the last infusion site.
- ▶ To avoid injury and infection, never touch the introducer needle or the cannula.
- ▶ If the pump holder frequently becomes detached from the skin, consult your healthcare professional to find a method that may improve adhesion to the skin.
- ▶ If the infusion site becomes irritated, replace the infusion assembly immediately and choose a new infusion site.

4.3 Putting the Components into Operation



After setting up the diabetes manager, the [Prepare micropump](#) display appears.

Tap [OK](#).



Follow the instructions shown on the [Prepare micropump](#) display.

If you want to see the action steps as an animated video, tap [Help](#).

Once you have performed all 3 steps, tap [Done](#).

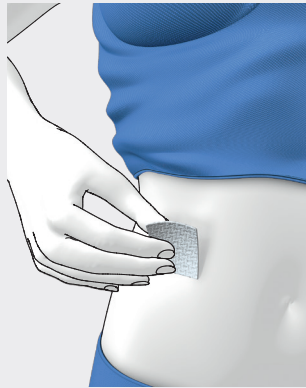
4.3.1 Attaching the Infusion Assembly to the Body

1



Wash your hands and dry them thoroughly.

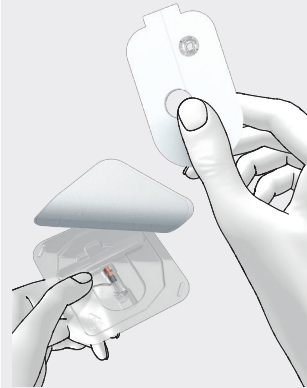
2



Select a suitable site on the body.

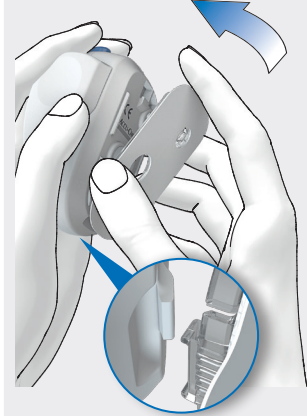
Disinfect the site on your body according to the instructions given by your healthcare professional. Make sure that the infusion site is dry and free from residues.

3



Remove the pump holder from the packaging.

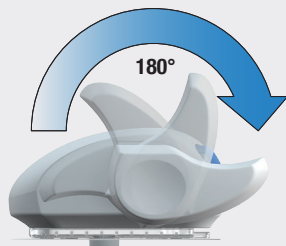
4



Attach the hook on the pump holder to the underside of the insertion device.

Press the pump holder onto the underside of the insertion device until it locks into place. Check whether the pump holder is correctly locked into place.

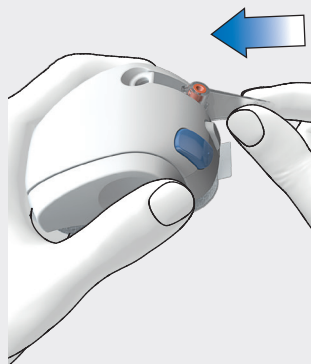
5



Prime the insertion device by rotating the priming handle clockwise in the direction of the arrow, as far as it will go.

When the insertion device is fully primed, you will hear a click.

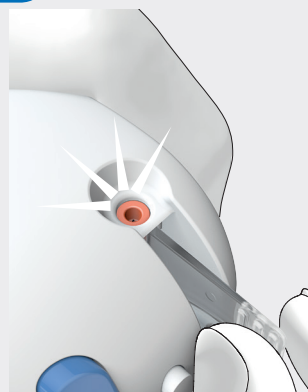
6



Insert the cannula assembly into the insertion device.

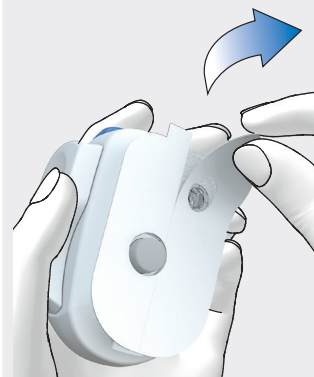
Push the cannula assembly into the slot until you hear it click into place.

7



Use the positioning aid to check whether the cannula assembly is in the correct position.

8



Remove both parts of the protective film from the adhesive pad.

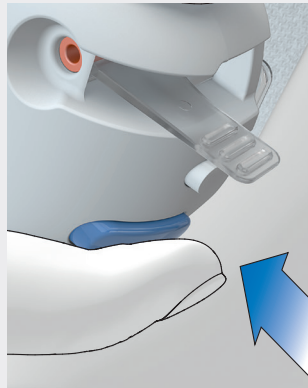
Do not touch the adhesive surface of the adhesive pad. This could impair the adhesive properties.

9



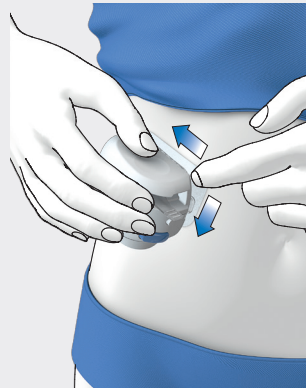
Holding the skin taut, press the insertion device firmly against the selected site on your body.

10



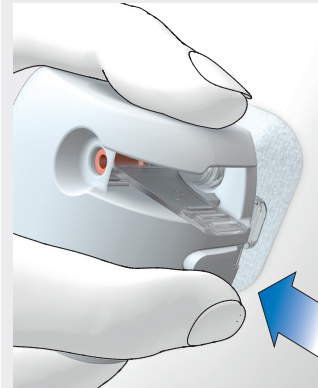
Press the blue release button to insert the cannula under the skin.

11



Smooth over the adhesive pad around the infusion assembly so that the infusion assembly is in good contact with the skin.

12



Press the detach button and detach the insertion device from the infusion assembly. If possible, keep the adhesive pad in position with the other hand.