

**Bluetooth Professional**  
**SEHWA Electronics Co., Ltd.**

# Bluetooth® PTT -POLICE I

# PTT FULL KIT

## User Manual



Thank you for choosing SEECODE Bluetooth PTT Full Kit. This device connect your two-way radio to Bluetooth Speaker Mic. without wire and let you more comfortable to use.

Patent List	29, Nov 2006	KOREA	10-2006-0118972
	6 Nov. 2007	EUROPE	07021512 4
	12, Nov. 2007	JAPAN	2007 293205
	8, Jan 2007	U.S.A	11/650 812



# | Contents |

Product overview .....	4
In the package .....	5
Part description .....	6

## How to use Bluetooth PTT Full Kit

Charging .....	8
Power on / off .....	9
Pairing .....	10
Use as walkie-talkie mode .....	11
Volume control .....	11
When any device works abnormally .....	12

## Appendix

Quick manual .....	13
LED indicator .....	14
Precautions for safety .....	16
Specifications .....	17
Declaration of confirmation .....	18
Warranty .....	19

**SEHWA**

## Product overview

Thank you for choosing **SEHWA Bluetooth PTT Full Kit**. This device connect your two-way radio to **Bluetooth Speaker Mic** without wire and let you more comfortable to use.

You can put heavy two-way radio in car or office and just use **Bluetooth Speaker Mic** instead. This device removes inconvenience and danger especially for police, sailor, workers in plant, construction site & etc.

## In the package



Speaker Mic.  
(SCP860)



PTT Dongle  
(SHD612)



Charging Adapter



Multi-Charging Jack



User's Manual



Velcro

### ☒ Option



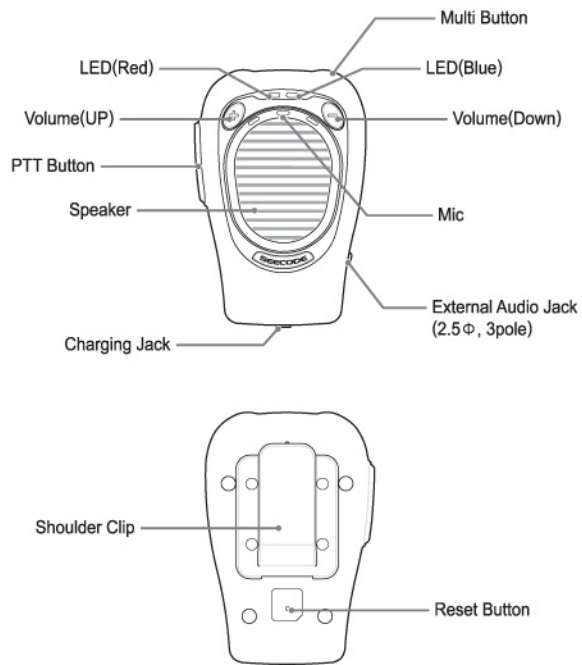
Cigarette Charger



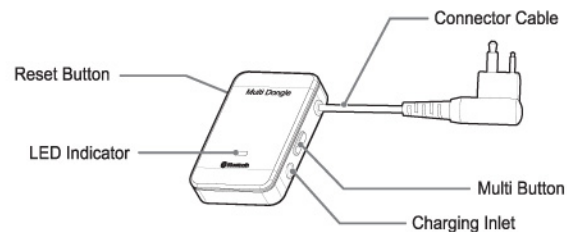
Audio Jack

## Part description

SCP860 (Bluetooth Speaker Mic.)



SHD612 (PTT Dongle)



# How to use Bluetooth PTT Full Kit

This device connects your two-way radio to **Bluetooth Speaker Mic.** without wire and let you more comfortable to use.

## Charging

**Bluetooth Speaker Mic.** and **PTT Dongle** have a built-in battery and need to be fully charged before you use.

1. You can charge **Bluetooth Speaker Mic.** and **PTT Dongle** at the same time using Multi-Charging Jack through Charging Adapter within the house and Cigarette Charger(option) in the car.

While charging, the Red & Blue LED flashes 1 time at a 3 second interval and it turns off when charging is completed.

2. The charging time is less than 3 hours.

 **Tips** All devices are working normally while charging and you could use them.



### Low Battery State

Bluetooth Speaker Mic. : Red LED flashes 4 times at 0.5 second interval  
PTT Dongle : Blue and Red LED flashes at 10 seconds interval



**Notice** Do not use other charger except the supplied charger.  
It may cause a trouble and damage.

## Power on / off

Turning On	Button Action	LED State
· Bluetooth Speaker Mic.	Press Multi Button for 2 seconds	Blue LED flashes 5 times
· PTT Dongle	Press Multi Button for 2 seconds	Blue LED flashes 5 times
Turning Off	Button Action	LED State
· Bluetooth Speaker Mic.	Press Multi Button for 4 seconds	Blue LED turns on for 1 second and turns off
· PTT Dongle	Press Multi Button for 4 seconds	Blue LED turns on for 1 second and turns off

## | Pairing |

Pairing Mode	Button Action	LED State
· Bluetooth Speaker Mic.	As power off, press Multi Button for 6 seconds	Blue LED flashes 5 times continuously and rapidly flashes (pairing standby)
· PTT Dongle	As power off, press Multi Button for 6 seconds	Blue LED flashes 5 times continuously and rapidly flashes (pairing standby)

- When pairing standby mode, **PTT Dongle** registers **Speaker Mic.** automatically.
- When pairing failed, please proceed from the first step.
- Once pairing completed, you don't need to pair any more.  
When you power on the product, they're automatically connected.
- When you are out of range, as long as you come back within 20minutes, they're automatically connected. If not connected, please press Multi Button once of **Speaker Mic.**

## | Use as walkie-talkie mode |

When you use as walkie - talkie mode, press PTT Button on **Speaker Mic.** and you can talk to the opposite party. You should press and hold PTT Button while you're speaking. You should release PTT Button while you're hearing. These usage is the same as normal two - way radio.

## | Volume control |

Press Volume Button [ + ] or [ - ] on Speaker Mic. to increase or decrease the speaker volume.

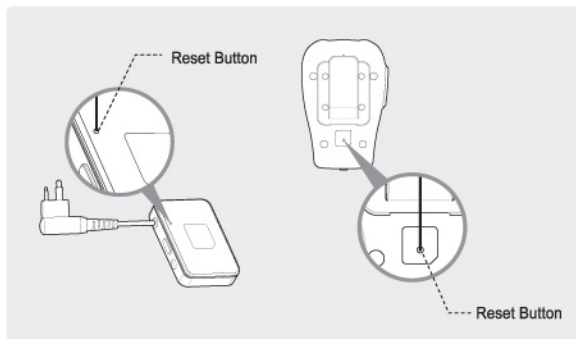
Volume is made up by 6 stages.

There is a beep sound when you adjusting volume on stand-by status but no sound on receiving(hearing) status.

There is a long beep sound on high & low end volume.

## When any device works abnormally

When you have any serious trouble in use, press the reset button on the rear side of PTT Dongle & Speaker Mic.



## Appendix

### Quick manual

Menu	Product	Action
Turning On	· Bluetooth Speaker Mic. · PTT Dongle	Press Multi Button for 2 seconds
Turning Off	· Bluetooth Speaker Mic. · PTT Dongle	Press Multi Button for 4 seconds
Pairing	· Bluetooth Speaker Mic. · PTT Dongle	As power off, press Multi Button for 6 seconds
Speaking	· Bluetooth Speaker Mic.	Press PTT Button while you are speaking
Hearing	· Bluetooth Speaker Mic.	Release PTT Button while you are hearing

## LED indicator

Low Battery	· Bluetooth Speaker Mic.	Red LED flashes 4 times at a 0.5 second interval
	· PTT Dongle	Blue and Red LED flashes at 10 seconds interval
Pairing Mode	· Bluetooth Speaker Mic.	Blue LED flashes 5 times continuously and rapidly flashes (pairing standby)
	· PTT Dongle	
Paired Mode	· Bluetooth Speaker Mic. · PTT Dongle	Blue LED flashes 3 times at a 5 seconds interval

### ● Bluetooth Speaker Mic.(Normal case)

	Red LED	Blue LED
PTT On	Always on	Off
PTT Off	Off	Blue LED flashes 3 times at a 5seconds interval
Receiving	Off	Always on

### ● Bluetooth Speaker Mic.(Abnormal case)

	Red LED	Blue LED
PTT On	Off	Off
PTT Off	Off	Blue LED flashes 1 time at a 5 seconds interval
Receiving	Off	Off

\* Abnormal case : Problem occurs on unit or operating distance is beyond 10m.



## Precautions for safety

- ❗ Keep a place of safety with turning off product.
- ❗ Do not place the product under over 50℃ high temperature or a direct ray of light. It may cause to lower of performance and reduce battery life.
- ❗ Keep the product away from humidity & dust.
- ❗ Do not drop the product from high place.
- ❗ Do not touch product and plug with a wet hand.
- ❗ Pay attention that a baby or pet do not suck or bite product.
- ❗ Do not modify, repair, take a part at discretion.
- ❗ Turn off at the place where product use is for bidden.
- ❗ If possible, do not use while driving.
- ❗ Keep the product away from micro-wave or wireless LAN. It may cause a noise.
- ❗ Risk of explosion if battery is replaced by an incorrect type.
- ❗ Dispose of used batteries according to the instructions

## Specifications

	SCP860 (Bluetooth Speaker Mic.)	SHD612 (PTT Dongle)
<b>Bluetooth® Version</b>	Bluetooth® Ver 2.1	Bluetooth® Ver 2.0
<b>Supported Bluetooth® profile</b>	Headset & Serial profile	Headset & Serial profile
<b>Carrier frequency</b>	2,402~2,480GHz	2,402~2,480GHz
<b>Operating range</b>	Up to 10m	Up to 10m
<b>Dimension(mm)</b>	88(L) x 59(W) x 27(H)	45(L) x 29(W) x 10(H)
<b>Weight</b>	112.7g	16.3g
<b>Operating temperature</b>	-10℃ ~ +60℃	-10℃ ~ +60℃
<b>Battery</b>	3.7V/1,100mA	3.7V/150mA
<b>Talking time</b>	Up to 8 hours	Up to 7 hours
<b>Stand-by time</b>	Up to 200 hours	Up to 200 hours
<b>Charging time</b>	Less than 3 hours	Less than 2 hours

## FCC Warning

This device complies with Part 15 of the FCC Rules. Operation is subject to the following two conditions:

- (1) This device may not cause harmful interference.
- (2) This device must accept any interference received, including interference that may cause undesired operation.

Any changes or modifications (including the antennas) made to this device that are not expressly approved by the manufacturer may void the user's authority to operate the equipment.

FCC RF Radiation Exposure Statement: This equipment complies with FCC RF radiation exposure limits set forth for an uncontrolled environment.

This device and its antenna must not be co-located or operating in conjunction with any other antenna or transmitter.

## WARRANTY

This product was produced under strict quality management and inspection.

### Free of charge service

1. All defective units within the applicable Warranty period/s will be repaired or replaced, in the case those faulty goods were handled normally.
2. If you use it commercially, the warranty period/s will be reduced half.

### Free of charge Warranty shall not apply to

1. Defects or damage resulting from use of the unit in other than its normal and intended manner, eg, in excess of their maximum specifications or operating instructions.
2. Defects or damage from misuse, accident, neglect, improper testing, installation, alteration or modification of any kind, or spillage of food or liquid.
3. Faulty is caused by a nature Disaster.
4. The capacity of expendables is exhausted.

Product name	Bluetooth PTT Full Kit	
Model number	SCP860, SHD612	
Warranty period	1year	
Purchases date		
Outlet the unit was purchased		
Tel		
Customer	Address	
	Name	
	Tel	