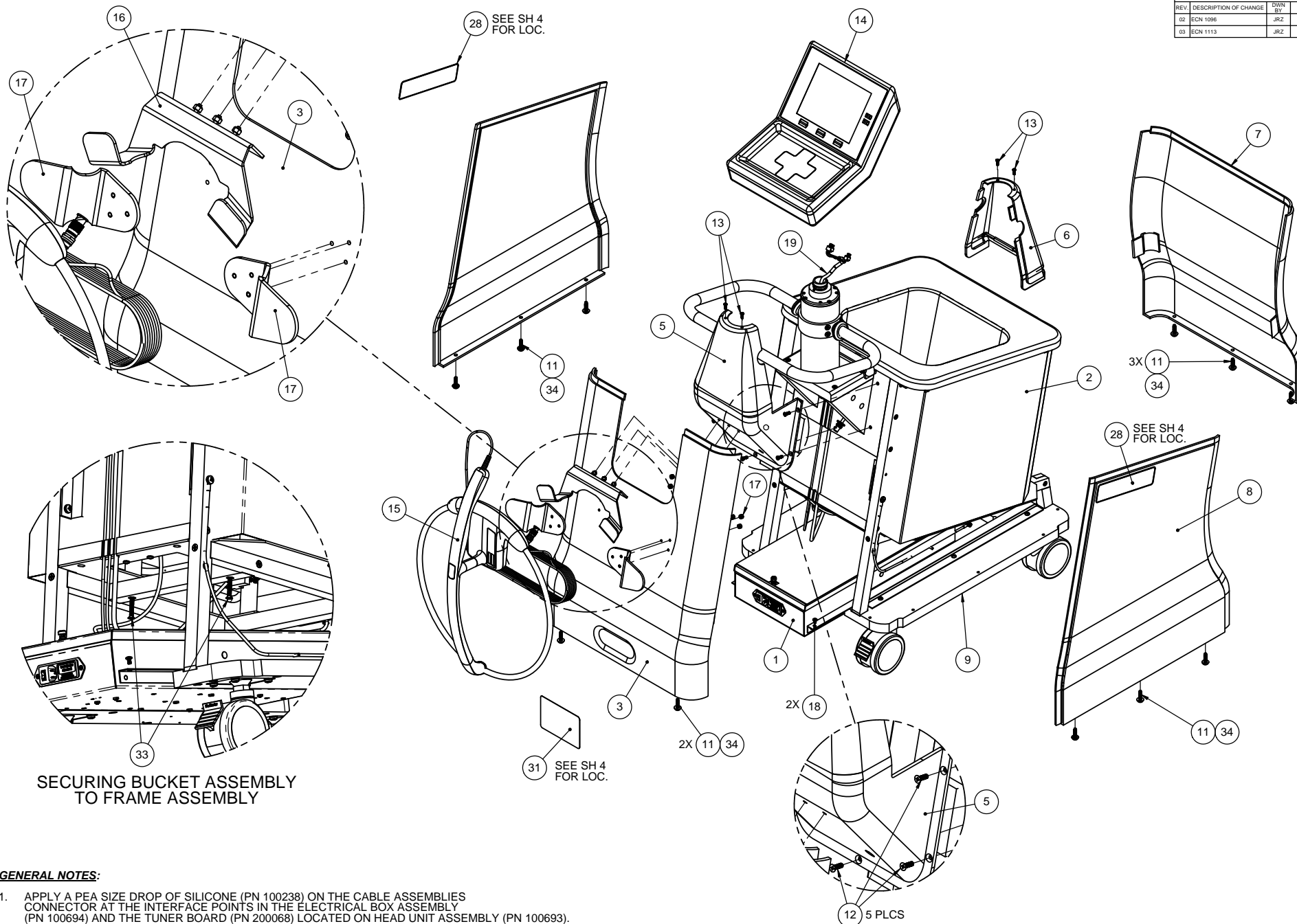


REVISIONS				
REV.	DESCRIPTION OF CHANGE	DWN BY	APP BY	APP DATE
02	ECN 1096	JRZ	-	11-20-09
03	ECN 1113	JRZ	JZ	1-7-10



SECURING BUCKET ASSEMBLY TO FRAME ASSEMBLY

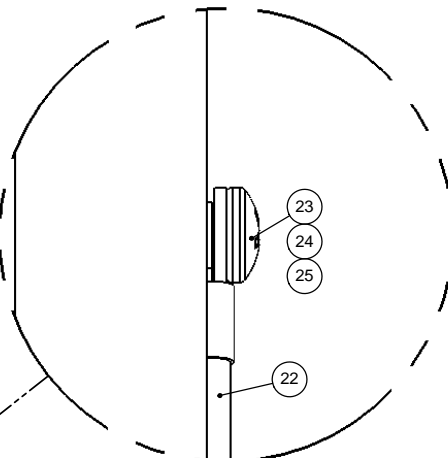
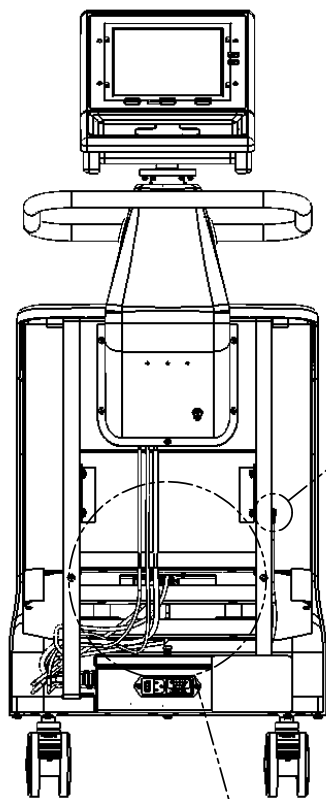
GENERAL NOTES:

1. APPLY A PEA SIZE DROP OF SILICONE (PN 100238) ON THE CABLE ASSEMBLIES CONNECTOR AT THE INTERFACE POINTS IN THE ELECTRICAL BOX ASSEMBLY (PN 100694) AND THE TUNER BOARD (PN 200068) LOCATED ON HEAD UNIT ASSEMBLY (PN 100693).
2. DELETE
3. INSTALL THE SNAP RING THAT CONNECTS HEAD UNIT ASSEMBLY (PN 100693) TO THE FRAME ASSEMBLY (PN 100695) DURING THE ASSEMBLY OF HEAD UNIT ASSEMBLY. **SEE SHEET 4 FOR DETAILS.**
4. TIGHTEN WAND ASSEMBLY (PN 100674) CONNECTOR NUT TO 2.5in-lbs.
5. SECURE THE IN SCAN CABLE ASSEMBLY (PN 200110) AND CONNECTOR TO THE TUNER BOARD (PN 200068), LOCATED IN THE HEAD UNIT BOTTOM PANEL ASSEMBLY, ON THE HEAD UNIT ASSEMBLY (PN 100693) USING A BOX END WRENCH. TORQUE AS REQUIRED. **SEE "DETAIL N", SHEET 3**

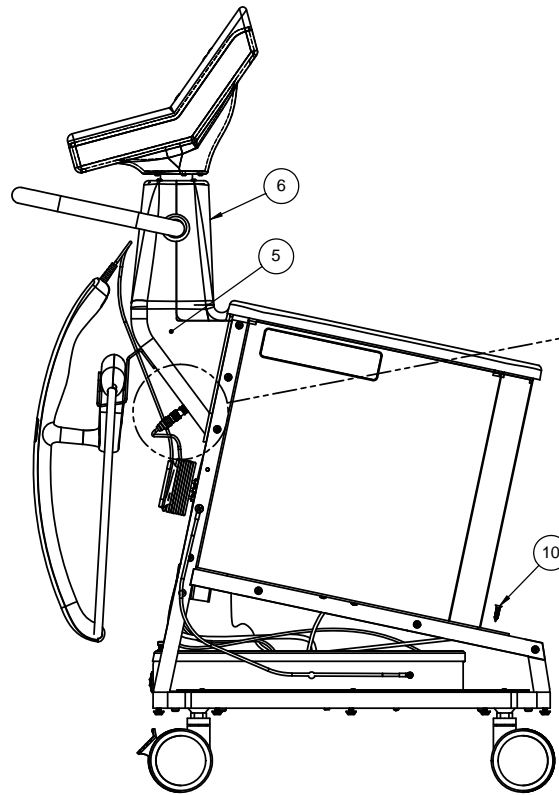
UNITS FOR ALL DIMENSIONS UNLESS OTHERWISE NOTED: INCHES	
FRACTIONAL: \pm	ANGULAR: MACH $\pm 1^\circ$ BEND $\pm 1^\circ$
TWO PLACE DECIMAL: $\pm .010$	THREE PLACE DECIMAL: $\pm .005$
MATERIAL:	
SEE BOM	
FINISH:	
THIRD ANGLE PROJECTION	

PROPRIETARY AND CONFIDENTIAL THE INFORMATION CONTAINED IN THIS DRAWING IS THE SOLE PROPERTY OF CLEARCOUNTER MEDICAL SOLUTIONS. ANY REPRODUCTION IN PART OR AS A WHOLE WITHOUT THE WRITTEN PERMISSION OF CLEARCOUNTER MEDICAL SOLUTIONS IS PROHIBITED.	
INTERPRET GEOMETRIC TOLERANCING PER: ASME Y14.5M - 1994	
clearcount	

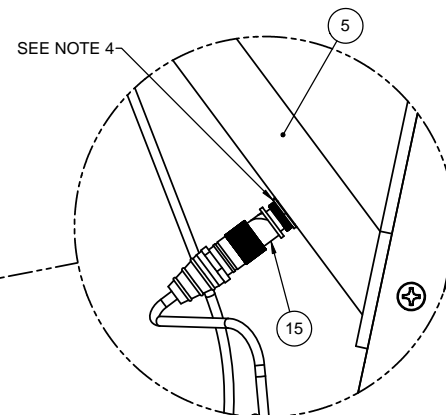
CLEARCOUNTER MEDICAL SOLUTIONS		
TITLE: ASSEMBLY: SMARTSPONGE SYSTEM		
SIZE: C	DWG. NO.: 100800	REV: 03
SCALE: 1:24 APP DATE:		SHEET 1 OF 5



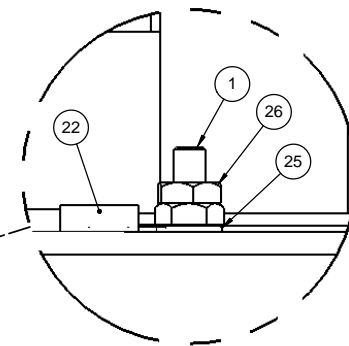
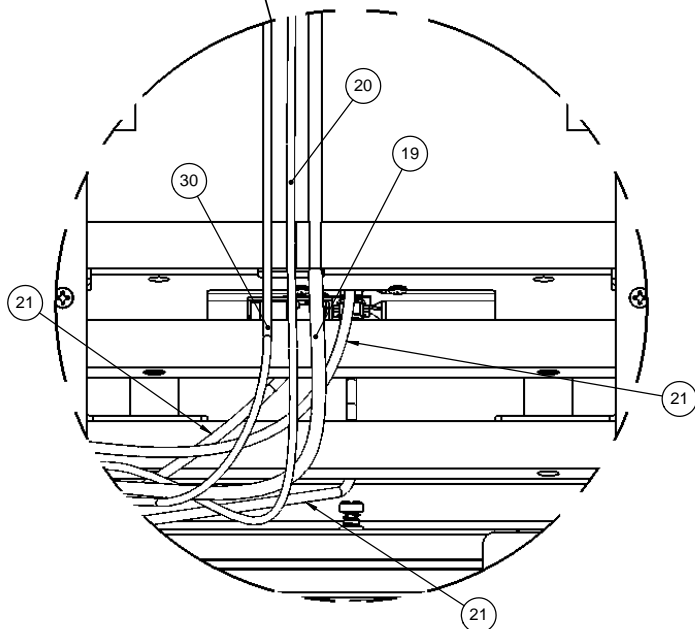
GROUND LUG CONNECTION
(FRAME TO EBOX)



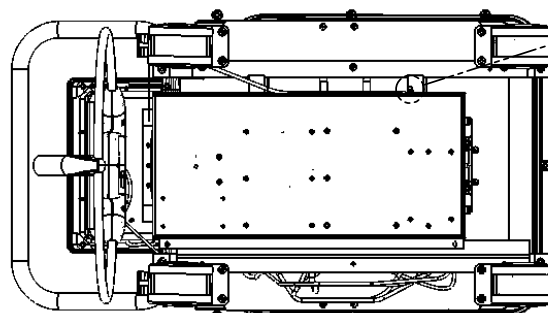
SPONGE COUNTER ASSEMBLY
w/ BUCKET PANELS REMOVED



SEE NOTE 4



DETAIL C
SCALE 2 : 1
GROUND LUG CONNECTION
(FRAME TO EBOX)

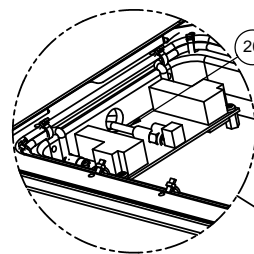
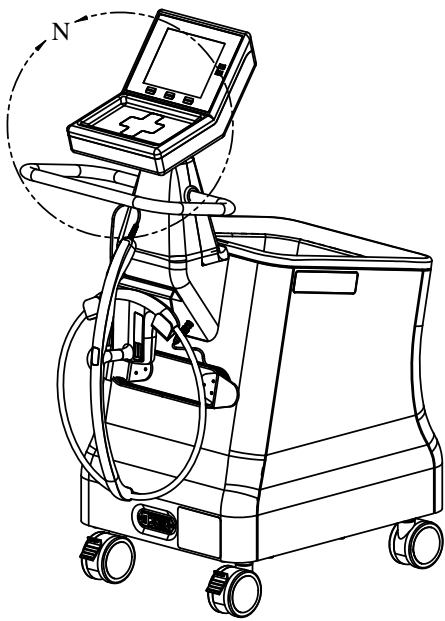


BOTTOM VIEW
(SOME ITEMS REMOVED FOR CLARITY)
PANELS, BUCKET PLATE, Z-STRIP

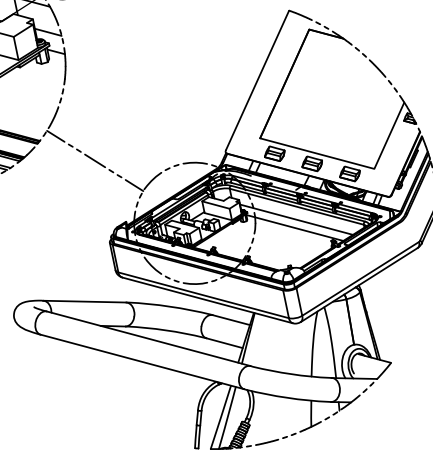
UNITS FOR ALL DIMENSIONS UNLESS
OTHERWISE NOTED: INCHES
FRACTIONAL: \pm
ANGULAR: MACH $\pm 1^\circ$ BEND $\pm 1^\circ$
TWO PLACE DECIMAL: $\pm .010$
THREE PLACE DECIMAL: $\pm .005$
MATERIAL:
SEE BOM
FINISH:
THIRD ANGLE
PROJECTION

PROPRIETARY AND CONFIDENTIAL
THE INFORMATION CONTAINED IN THIS
DRAWING IS THE SOLE PROPERTY OF
CLEARCOUNTER MEDICAL SOLUTIONS. ANY
REPRODUCTION IN PART OR AS A WHOLE
WITHOUT THE WRITTEN PERMISSION OF
CLEARCOUNTER MEDICAL SOLUTIONS IS
PROHIBITED.
INTERPRET GEOMETRIC TOLERANCING PER:
ASME Y14.5M - 1994
clearcount
medical solutions

CLEARCOUNTER MEDICAL SOLUTIONS
TITLE: **ASSEMBLY: SMARTSPONGE
SYSTEM**
SIZE: **C** DWG. NO.: **100800** REV: **03**
SCALE: 1:24 APP DATE: SHEET 2 OF 5

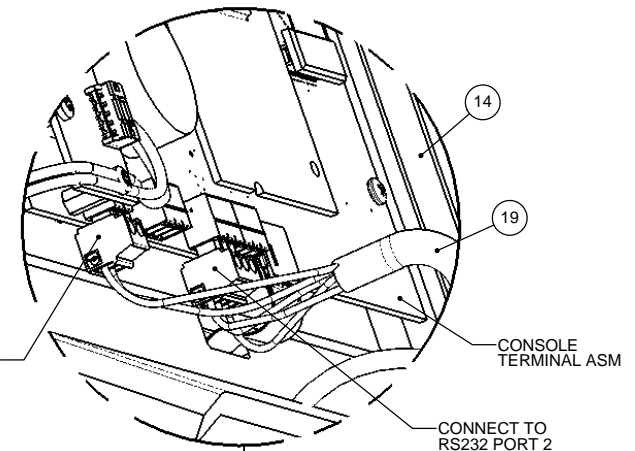


20 SEE NOTES 1, 5



DETAIL N
SCALE 1 : 4

CONNECT POWER/COM CABLE ASSEMBLY
TO MCU2 PCB ASM LOCATED IN THE HEAD
UNIT TOP ASSEMBLY AS SHOWN

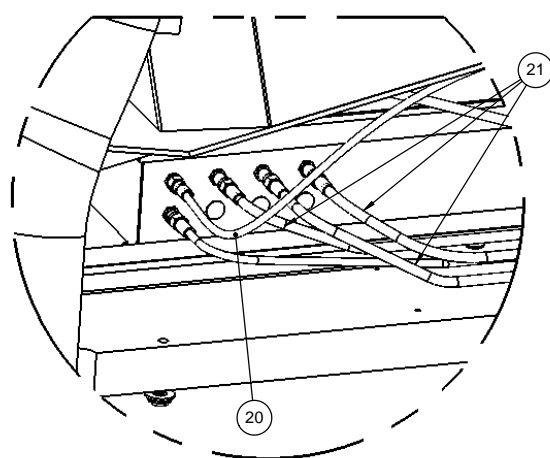


CONNECT TO MAIN
POWER PORT

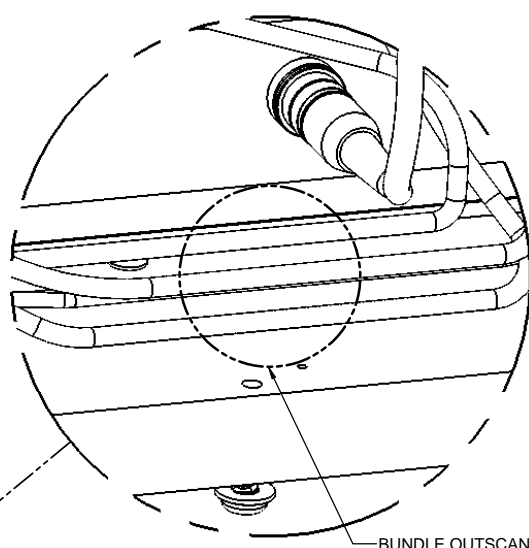
CONNECT TO
RS232 PORT 2

14

14 ITEM 3 IN BOM OF 100693
#8-32 x 3/4" SHCS



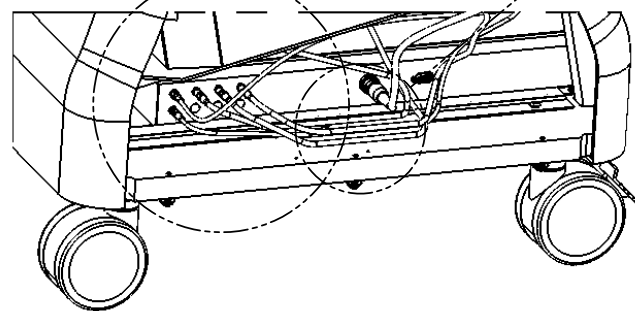
21



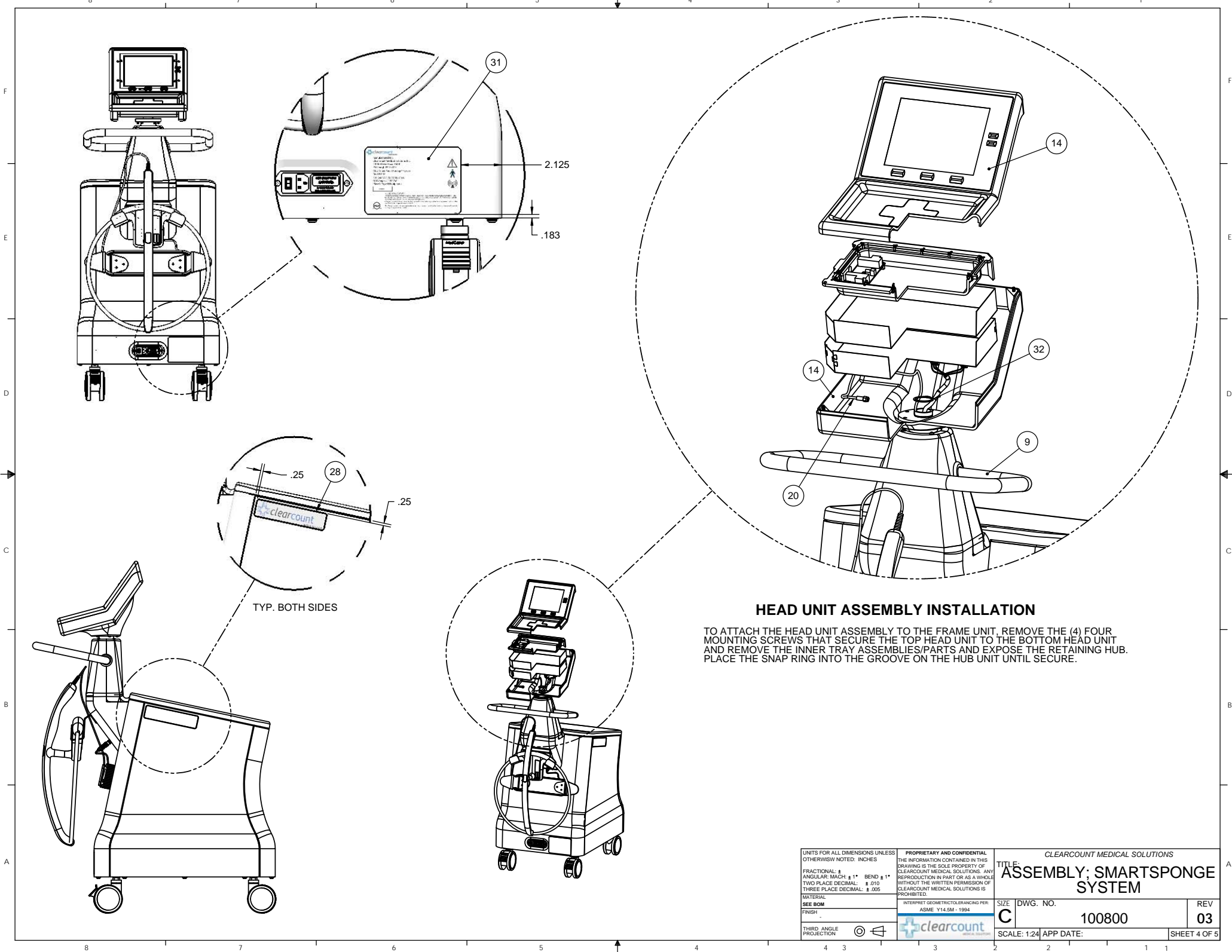
BUNDLE OUTSCAN CABLES AND WAND
BULKHEAD CABLE WITH CABLE MOUNT
PART NUMBER 100258 AND CABLE TIE
PART NUMBER 200127 TO BASE.

NOTE:

LOCATION OF CABLE MOUNT SHOULD BE SELECTED
AS CABLE LENGTHS ALLOW. ALL UNITS SHOULD HAVE
CABLE MOUNT LOCATED IN THE SAME LOCATION.



UNITS FOR ALL DIMENSIONS UNLESS OTHERWISE NOTED: INCHES		PROPRIETARY AND CONFIDENTIAL THE INFORMATION CONTAINED IN THIS DRAWING IS THE SOLE PROPERTY OF CLEARCOUNT MEDICAL SOLUTIONS. ANY REPRODUCTION IN PART OR AS A WHOLE WITHOUT THE WRITTEN PERMISSION OF CLEARCOUNT MEDICAL SOLUTIONS IS PROHIBITED.		CLEARCOUNT MEDICAL SOLUTIONS	
FRACTIONAL: \pm	ANGULAR: MACH $\pm 1^\circ$	BEND $\pm 1^\circ$	TWO PLACE DECIMAL: $\pm .010$	THREE PLACE DECIMAL: $\pm .005$	
MATERIAL: SEE BOM		INTERPRET GEOMETRIC TOLERANCING PER: ASME Y14.5M - 1994		SIZE C	DWG. NO. 100800
FINISH: THIRD ANGLE PROJECTION		clearcount		SCALE: 1:24	APP DATE:
				REV 03	SHEET 3 OF 5



UNITS FOR ALL DIMENSIONS UNLESS OTHERWISE NOTED: INCHES		FRACTIONAL: \pm		ANGULAR: MACH $\pm 1^\circ$ BEND $\pm 1^\circ$		TWO PLACE DECIMAL: $\pm .010$		THREE PLACE DECIMAL: $\pm .005$	
MATERIAL:		INTERPRET GEOMETRIC TOLERANCING PER:		ASME Y14.5M - 1994		SIZE		DWG. NO.	
SEE BOM		FINISH		THIRD ANGLE PROJECTION		C		100800	
								REV	
								03	
								SCALE: 1:24 APP DATE:	
								SHEET 4 OF 5	

