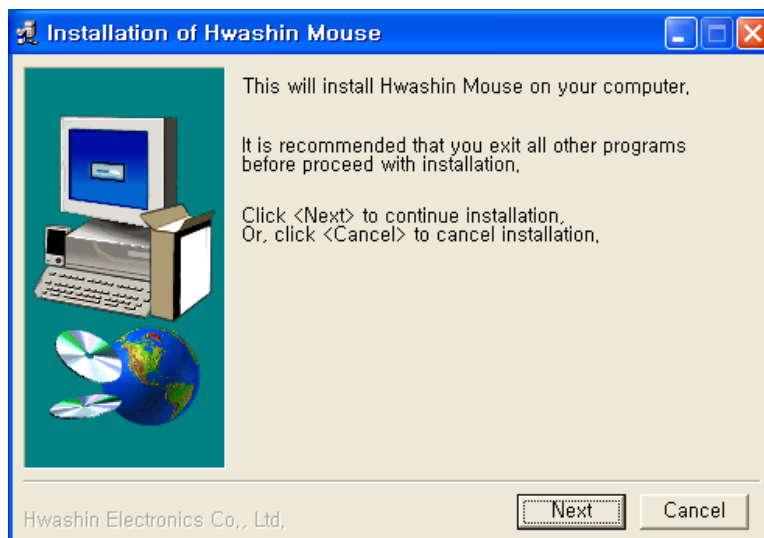
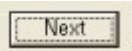


## HS-M3700A Optical security mouse USER'S GUIDE

Hwashin security mouse can be installed in the following way.

1.Put Hwashin security mouse CD into your computer.

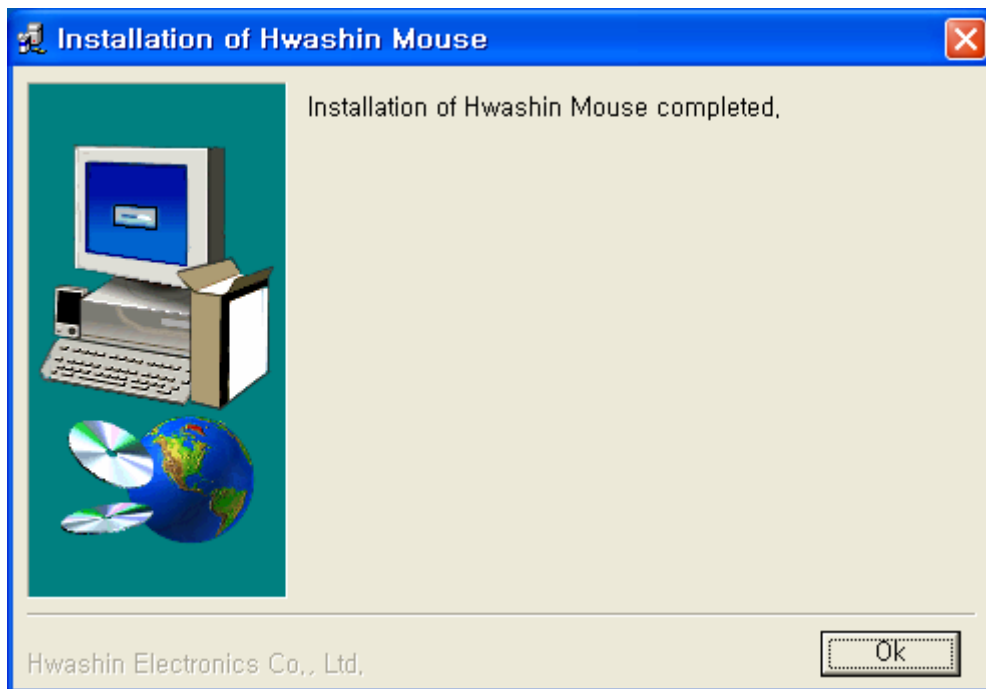
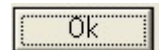
2.When the following dialogue box appears on the screen, click



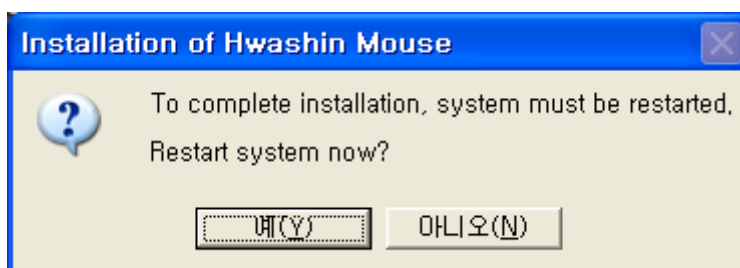
3.When the following dialogue box appears on the screen, click



4. When the following dialogue box appears on the screen, click



5. When the following dialogue box appears on the screen, click



6. When Hwashin security mouse is not in use,  
the program should be deleted in the following way.

My computer → control panel → program addition/removal →  
“hwashin mouse” deleted

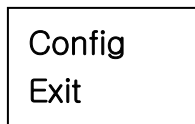
# How to change security screen and password

\*\*\* default password is 1234 \*\*\*

1. Click the following icon at bottom right of the screen.



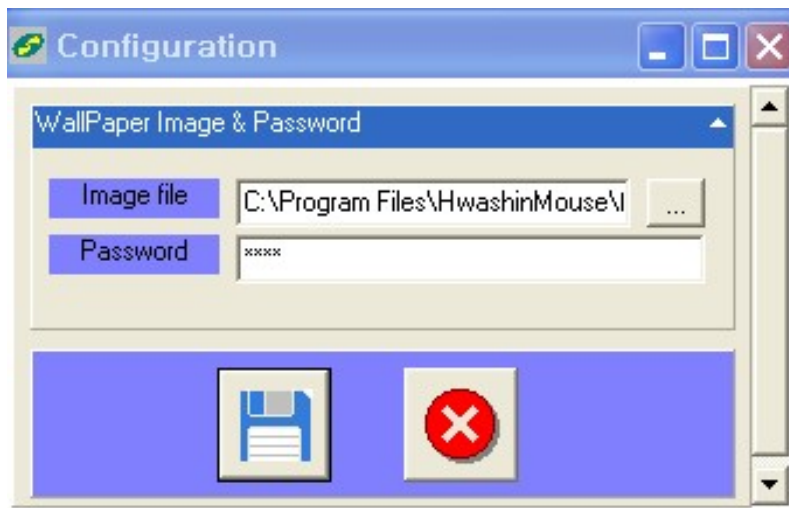
2. When



appears on the screen,

3. Click "Exit" and 'security' function will be released.

4. Click "Config" and the following window will appear on the screen.



5. If you want to change your password, type a new password(4 numbers)

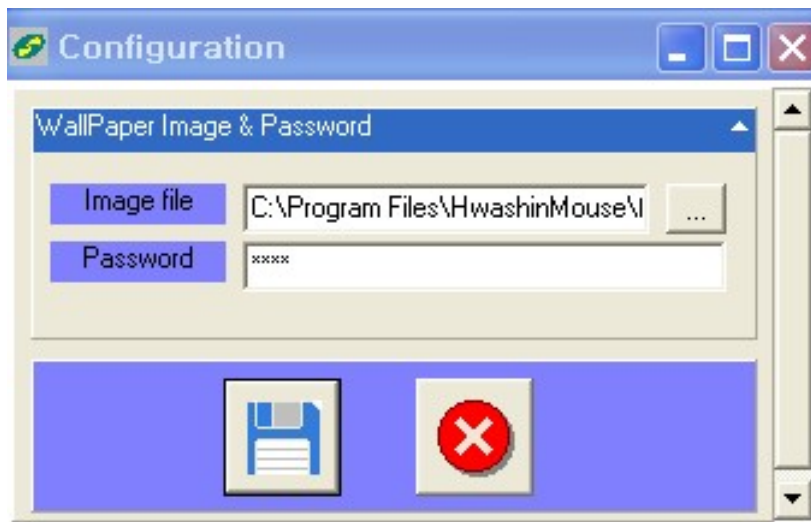
in the password blank and click




.

6. . If you want to change security screen, select jpg file from a directory in

which you want to set security screen, and click



7. Click  and the above “configuration” window will disappear. And your password and security screen are changed.

FCC Compliance Statements

Note: This equipment has been tested and found to comply with the limits for a Class B digital device, pursuant to part 15 of the FCC Rules. These limits are designed to provide reasonable protection against harmful interference in a residential installation. This equipment generates, uses and can radiate radio frequency energy and, if not installed and used in accordance with the instructions, may cause harmful interference to radio communications. However, there is no guarantee that interference will not occur in a particular installation. If this equipment does cause harmful interference to radio or television reception, which can be determined by turning the equipment off and on, the user is encouraged to try to correct the interference by one or more of the following measures:

- Reorient or relocate the receiving antenna
- Increase the separation between the equipment and receiver.
- Connect the equipment into an outlet on a circuit different from that to which the receiver is connected.
- Consult the dealer or an experienced radio / TV technician for help.

Warning : Your are cautioned that any change or modifications to the equipment not expressly approved by the party responsible for compliance could void your authority to operate such equipment.