

# SAR EVALUATION REPORT



For

**Beyond E-Tech Inc.**

3005 West Loop South STE.100



Houston, TX 77027, USA

**FCC ID: WTID620**

<b>This Report Concerns:</b> <input checked="" type="checkbox"/> Original Report	<b>Product Name:</b> GSM&GPRS Dual Band Mobile Phone
<b>Test Engineer:</b> Jimmy Nguyen	
<b>Report No.:</b> R0810215-SAR	
<b>Report Date:</b> 2008-11-03	
<b>Reviewed By:</b> Sr. RF Engineer	Boni Baniquid 
<b>Prepared By:</b> Bay Area Compliance Laboratories Corp. (BACL) 1274 Anvilwood Ave. Sunnyvale, CA 94089, USA Tel: (408) 732-9162 Fax: (408) 732 9164	

**Note:** This test report is prepared for the customer shown above and for the device described herein. It may not be duplicated or used in part without prior written consent from Bay Area Compliance Laboratories Corp. This report **must not** be used by the customer to claim product certification, approval, or endorsement by NVLAP\*, NIST, or any agency of the Federal Government.

\* This report may contain data that are not covered by the NVLAP accreditation and are marked with an asterisk "\*" Rev 2.0

<b>DECLARATION OF COMPLIANCE SAR EVALUATION</b>		
<b>Rule Part(s):</b>	CFR 47 §2.1093	
<b>Test Procedure(s):</b>	FCC OET Bulletin 65 C; IEEE 1528-2003	
<b>Device Category:</b>	GSM&GPRS Dual Band Mobile Phone	
<b>Exposure Category:</b>	General Population/Uncontrolled Exposure	
<b>Modulation Type:</b>	GMSK	
<b>TX Frequency Range:</b>	824 - 849 MHz (Cellular Band) 1850 – 1910 MHz (PCS Band)	
<b>Maximum Conducted Power Tested:</b>	33.10 dBm (Cellular Band) 28.85 dBm (PCS Band)	
<b>Antenna Type(s) Tested:</b>	Interval Antenna	
<b>Body-Worn Accessories:</b>	Headset	
<b>Face-Head Accessories:</b>	None	
<b>Battery Type (s) Tested:</b>	LI-ion: 3.7Vdc/1200mAH	
<b>Max. SAR Level(s) Measured:</b>	0.360 W/Kg Head Tissue	Cellular Band
	0.184 W/Kg Body Tissue	
	0.282 W/Kg Head Tissue	PCS Band
	0.117 W/Kg Body Tissue	
<p>This wireless device has been shown to be capable of compliance for localized specific absorption rate (SAR) for General Population/Uncontrolled Exposure limits specified in ANSI/IEEE Standards and has been tested in accordance with the measurement procedures specified in FCC OET 65 Supplement C.</p> <p style="text-align: center;"><b>The results and statements contained in this report pertain only to the device(s) evaluated.</b></p>		
<p><b>Approved by:</b></p>  <p>Boni Baniqued Senior RF Engineer <b>Bay Area Compliance Laboratories Corp.</b></p>	 <p style="text-align: center;"><b>EUT Photo</b></p>	

# TABLE OF CONTENTS

**REFERENCE, STANDARDS, AND GUIDELINES** ..... 4

SAR LIMITS ..... 5

**EUT DESCRIPTION** ..... 6

EUT PHOTO ..... 6

**FACILITIES AND ACCREDITATION** ..... 7

**DESCRIPTION OF TEST SYSTEM** ..... 8

MEASUREMENT SYSTEM DIAGRAM ..... 10

SYSTEM COMPONENTS ..... 11

**EUT TEST STRATEGY AND METHODOLOGY** ..... 19

TEST POSITIONS FOR DEVICE OPERATING NEXT TO A PERSON’S EAR ..... 19

CHEEK/TOUCH POSITION ..... 20

EAR/TILT POSITION ..... 20

TEST POSITIONS FOR BODY-WORN AND OTHER CONFIGURATIONS ..... 21

SAR TESTS IN MOUTH AND JAW REGIONS OF THE SAM PHANTOM ..... 21

SAR EVALUATION PROCEDURE ..... 23

DASY4 SAR EVALUATION PROCEDURE ..... 24

**TESTING EQUIPMENT** ..... 26

EQUIPMENTS LIST & CALIBRATION INFO ..... 26

**SAR MEASUREMENT SYSTEM VERIFICATION** ..... 27

SYSTEM ACCURACY VERIFICATION ..... 27

**SAR MEASUREMENT RESULTS** ..... 28

SAR BODY AND HEAD WORST-CASE TEST DATA ..... 28

**APPENDIX A – MEASUREMENT UNCERTAINTY** ..... 30

**APPENDIX B – PROBE CALIBRATION CERTIFICATES** ..... 32

**APPENDIX C – DIPOLE CALIBRATION CERTIFICATES** ..... 41

**APPENDIX D - TEST SYSTEM VERIFICATIONS SCANS** ..... 57

LIQUID MEASUREMENT RESULT ..... 57

**APPENDIX E - EUT SCAN RESULTS** ..... 60

**APPENDIX F – CONDUCTED OUTPUT POWER MEASUREMENT** ..... 70

PROVISION APPLICABLE ..... 70

TEST PROCEDURE ..... 70

TEST EQUIPMENT ..... 70

TEST RESULTS ..... 70

**APPENDIX G – EUT TEST POSITION PHOTOS** ..... 71

1.5 CM BODY-WORN WITH HEADSET SETUP PHOTO ..... 71

EUT LEFT HEAD TOUCH SETUP PHOTO ..... 72

EUT LEFT HEAD TILT SETUP PHOTO ..... 72

EUT RIGHT HEAD TOUCH SETUP PHOTO ..... 73

EUT RIGHT HEAD TILT SETUP PHOTO ..... 73

**APPENDIX H– EUT PHOTO** ..... 74

**APPENDIX I - INFORMATIVE REFERENCES** ..... 78

---

## REFERENCE, STANDARDS, AND GUIDELINES

---

### FCC:

The Report and Order requires routine SAR evaluation prior to equipment authorization of portable transmitter devices, including portable telephones. For consumer products, the applicable limit is 1.6 mw/g as recommended by the ANSI/IEEE standard C95.1-1992 [6] for an uncontrolled environment (Paragraph 65). According to the Supplement C of OET Bulletin 65 “Evaluating Compliance with FCC Guide-lines for Human Exposure to Radio frequency Electromagnetic Fields”, released on Jun 29, 2001 by the FCC, the device should be evaluated at maximum output power (radiated from the antenna) under “worst-case” conditions for normal or intended use, incorporating normal antenna operating positions, device peak performance frequencies and positions for maximum RF energy coupling.

According to “SAR Evaluation Considerations for Handsets with Multiple Transmitters and Antennas”, released on Sep, 2008 by FCC, The operating and exposure characteristics for built-in unlicensed transmitters such as 802-11 b/g and Bluetooth, are examined in both stand-alone and simultaneous transmission conditions to streamline test requirements. Depending on output power, antenna configuration and SAR distribution, the number and types of tests necessary to show compliance for simultaneous transmission may vary with exposure potential. If the stand-alone 1-g SAR for each antenna is low, or the sum of the 1-g SAR for all transmitters is well within the SAR limit where overlapping SAR distributions are limited, SAR evaluation for simultaneous transmission may be unnecessary. When SAR evaluation for simultaneous transmission is not required, phones may be approved by a TCB according to procedures in this document. Otherwise, SAR results for simultaneous transmission and detailed descriptions of the volume scan and measurement procedures should be included in the SAR reports for equipment certification according to existing approval policies.

This report describes the methodology and results of experiments performed on wireless data terminal. The objective was to determine if there is RF radiation and if radiation is found, what is the extent of radiation with respect to safety limits. SAR (Specific Absorption Rate) is the measure of RF exposure determined by the amount of RF energy absorbed by human body (or its parts) – to determine how the RF energy couples to the body or head which is a primary health concern for body worn devices. The limit below which the exposure to RF is considered safe by regulatory bodies in North America is 1.6 mw/g average over 1 gram of tissue mass.

### CE:

The order requires routine SAR evaluation prior to equipment authorization of portable transmitter devices, including portable telephones. For consumer products, the applicable limit is 2 mw/g as recommended by the EN50360 for an uncontrolled environment. According to the Standard, the device should be evaluated at maximum output power (radiated from the antenna) under “worst-case” conditions for normal or intended use, incorporating normal antenna operating positions, device peak performance frequencies and positions for maximum RF energy coupling.

This report describes the methodology and results of experiments performed on wireless data terminal. The objective was to determine if there is RF radiation and if radiation is found, what is the extent of radiation with respect to safety limits. SAR (Specific Absorption Rate) is the measure of RF exposure determined by the amount of RF energy absorbed by human body (or its parts) – to determine how the RF energy couples to the body or head which is a primary health concern for body worn devices. The limit below which the exposure to RF is considered safe by regulatory bodies in Europe is 2 mw/g average over 10 gram of tissue mass.

The test configurations were laid out on a specially designed test fixture to ensure the reproducibility of measurements. Each configuration was scanned for SAR. Analysis of each scan was carried out to characterize the above effects in the device.

There was no SAR of any concern measured on the device for any of the investigated configurations.

## SAR Limits

### FCC Limit (1g tissue)

EXPOSURE LIMITS	SAR (W/kg)	
	(General Population / Uncontrolled Exposure Environment)	(Occupational / Controlled Exposure Environment)
Spatial Average (averaged over the whole body)	0.08	0.4
Spatial Peak (averaged over any 1 g of tissue)	1.60	8.0
Spatial Peak (hands/wrists/feet/ankles averaged over 10 g)	4.0	20.0

### CE Limit (10g tissue)

EXPOSURE LIMITS	SAR (W/kg)	
	(General Population / Uncontrolled Exposure Environment)	(Occupational / Controlled Exposure Environment)
Spatial Average (averaged over the whole body)	0.08	0.4
Spatial Peak (averaged over any 1 g of tissue)	2.0	10
Spatial Peak (hands/wrists/feet/ankles averaged over 10 g)	4.0	20.0

Population/Uncontrolled Environments are defined as locations where there is the exposure of individual who have no knowledge or control of their exposure.

Occupational/Controlled Environments are defined as locations where there is exposure that may be incurred by people who are aware of the potential for exposure (i.e. as a result of employment or occupation).

General Population/Uncontrolled environments Spatial Peak limit 1.6 W/kg (FCC) & 2 W/kg (CE) applied to the EUT.

## EUT DESCRIPTION

This Bay Area Compliance Laboratories Corp. test report has been prepared on behalf of *Beyond E-Tech Inc.* and their product, GSM & PCS Mobile Phone (FCC ID: WTID620) or the EUT (Equipment Under Test) as referred to in the rest of this report.

*\*The data gathered are from a typical production sample provided by the manufacturer, serial number: B2007*

Item	Content
Modulation	GMSK
Frequency Band	Cellular Band: 824-849 MHz (Tx) 869-894 MHz (Rx) PCS Band: 1850-1910 MHz (Tx) 1930-1990 MHz (Rx)
Dimensions (L x W x H)	120 mm (L) x 55 mm (W) x 22 mm (H)
Weight	149.5 g
Power Source	3.7Vdc/1200mAH Rechargeable Battery
Operation Mode	Head & Body-worn

## EUT Photo



Additional EUT photos, Appendix H

---

## **FACILITIES AND ACCREDITATION**

---

The test site used by Bay Area Compliance Laboratories Corp. (BACL) to collect data is located at 1274 Anvilwood Ave., Sunnyvale, California 94089, USA.

BACL is a National Institute of Standards and Technology (NIST) accredited laboratory under the National Voluntary Laboratory Accredited Program (Lab Code 200167-0).



The current scope of accreditations can be found at:

<http://ts.nist.gov/ts/htdocs/210/214/scopes/2001670.htm>

## DESCRIPTION OF TEST SYSTEM

---

These measurements were performed with the automated near-field scanning system DASY4 from Schmid & Partner Engineering AG (SPEAG) which is the fourth generation of the system shown in the figure hereinafter:



The system is based on a high precision robot (working range greater than 0.9m), which positions the probes with a positional repeatability of better than  $\pm 0.02\text{mm}$ . Special E- and H-field probes have been developed for measurements close to material discontinuity, the sensors of which are directly loaded with a Schottky diode and connected via highly resistive lines to the data acquisition unit.

The SAR measurements were conducted with the dosimetric probe ET3DV6 SN: 1604 (manufactured by SPEAG), designed in the classical triangular configuration and optimized for dosimetric evaluation. The probe has been calibrated according to the procedure with accuracy of better than  $\pm 10\%$ . The spherical isotropy was evaluated with the procedure and found to be better than  $\pm 0.25\text{dB}$ .



The phantom used was the Generic Twin Phantom. The ear was simulated as a spacer of 4 mm thickness between the earpiece of the phone and the tissue simulating liquid. The Tissue simulation liquid used for each test is in according with the FCC OET65 supplement C as listed below.

Ingredients (% by weight)	Frequency (MHz)									
	450		835		915		1900		2450	
Tissue Type	Head	Body	Head	Body	Head	Body	Head	Body	Head	Body
Water	38.56	51.16	41.45	52.4	41.05	56.0	54.9	40.4	62.7	73.2
Salt (NaCl)	3.95	1.49	1.45	1.4	1.35	0.76	0.18	0.5	0.5	0.04
Sugar	56.32	46.78	56.0	45.0	56.5	41.76	0.0	58.0	0.0	0.0
HEC	0.98	0.52	1.0	1.0	1.0	1.21	0.0	1.0	0.0	0.0
Bactericide	0.19	0.05	0.1	0.1	0.1	0.27	0.0	0.1	0.0	0.0
Triton X-100	0.0	0.0	0.0	0.0	0.0	0.0	0.0	0.0	36.8	0.0
DGBE	0.0	0.0	0.0	0.0	0.0	0.0	44.92	0.0	0.0	26.7
Dielectric Constant	43.42	58.0	42.54	56.1	42.0	56.8	39.9	54.0	39.8	52.5
Conductivity (S/m)	0.85	0.83	0.91	0.95	1.0	1.07	1.42	1.45	1.88	1.78

#### IEEE SCC-34/SC-2 P1528 Recommended Tissue Dielectric Parameters

Frequency (MHz)	Head		Body	
	$\epsilon_r$	$\sigma$ (S/m)	$\epsilon_r$	$\sigma$ (S/m)
150	52.3	0.76	61.9	0.80
300	45.3	0.87	58.2	0.92
450	43.5	0.87	56.7	0.94
835	41.5	0.90	55.2	0.97
900	41.5	0.97	55.0	1.05
915	41.5	0.98	55.0	1.06
1450	40.5	1.20	54.0	1.30
1610	40.3	1.29	53.8	1.40
1800-2000	40.0	1.40	53.3	1.52
2450	39.2	1.80	52.7	1.95
3000	38.5	2.40	52.0	2.73
5800	35.3	5.27	48.2	6.00



- DASY4 software.
- Remote control with teach pendant and additional circuitry for robot safety such as warning lamps, etc.
- The SAM twin phantom enabling testing left-hand and right-hand usage.
- The device holder for handheld mobile phones.
- Tissue simulating liquid mixed according to the given recipes.
- Validation dipole kits allowing to validate the proper functioning of the system.

## System Components

- DASY4 Measurement Server
- Data Acquisition Electronics
- Probes
- Light Beam Unit
- Medium
- SAM Twin Phantom
- Device Holder for SAM Twin Phantom
- System Validation Kits
- Robot

## DASY4 Measurement Server

The DASY4 measurement server is based on a PC/104 CPU board with a 166MHz low-power Pentium, 32MB chip disk and 64MB RAM. The necessary circuits for communication with either the DAE4 (or DAE3) electronic box as well as the 16-bit AD-converter system for optical detection and digital I/O interface are contained on the DASY4 I/O-board, which is directly connected to the PC/104 bus of the CPU board.



The measurement server performs all real-time data evaluation for field measurements and surface detection, controls robot movements and handles safety operation. The PC-operating system cannot interfere with these time critical processes. All connections are supervised by a watchdog, and disconnection of any of the cables to the measurement server will automatically disarm the robot and disable all program-controlled robot movements. Furthermore, the measurement server is equipped with two expansion slots which are reserved for future applications. Please note that the expansion slots do not have a standardized pinout and therefore only the expansion cards provided by SPEAG can be inserted. Expansion cards from any other supplier could seriously damage the measurement server.

## Data Acquisition Electronics

The data acquisition electronics DAE3 consists of a highly sensitive electrometer grade preamplifier with auto-zeroing, a channel and gain-switching multiplexer, a fast 16 bit AD-converter and a command decoder and control logic unit. Transmission to the measurement server is accomplished through an optical downlink for data and status information as well as an optical uplink for commands and the clock.



## Probes

The DASY system can support many different probe types.

**Dosimetric Probes:** These probes are specially designed and calibrated for use in liquids with high permittivities. They should not be used in air, since the spherical isotropy in air is poor ( $\pm 2$  dB). The dosimetric probes have special calibrations in various liquids at different frequencies.

**Free Space Probes:** These are electric and magnetic field probes specially designed for measurements in free space. The z-sensor is aligned to the probe axis and the rotation angle of the x-sensor is specified. This allows the DASY system to automatically align the probe to the measurement grid for field component measurement. The free space probes are generally not calibrated in liquid. (The H-field probes can be used in liquids without any change of parameters.)

**Temperature Probes:** Small and sensitive temperature probes for general use. They use a completely different parameter set and different evaluation procedures. Temperature rise features allow direct SAR evaluations with these probes.

### ET3DV6 Probe Specification

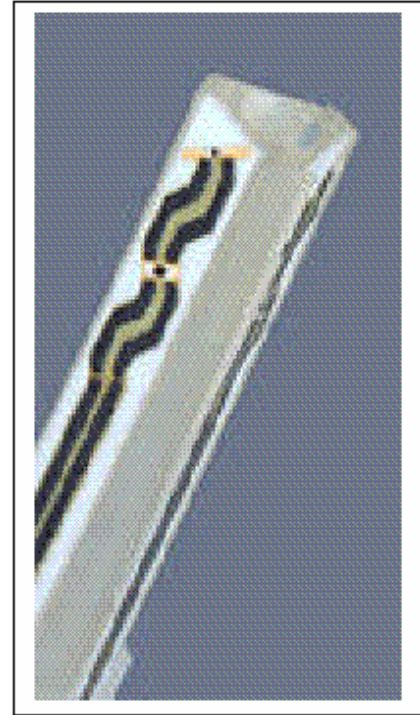
Construction Symmetrical design with triangular core  
 Built-in optical fiber for surface detection System  
 Built-in shielding against static charges  
 Calibration In air from 10 MHz to 2.5 GHz  
 In brain and muscle simulating tissue at  
 Frequencies of 450 MHz, 900 MHz and  
 1.8 GHz (accuracy  $\pm 8\%$ )  
 Frequency 10 MHz to  $> 6$  GHz; Linearity:  $\pm 0.2$  dB  
 (30 MHz to 3 GHz)  
 Directivity  $\pm 0.2$  dB in brain tissue (rotation around  
 probe axis)  
 $\pm 0.4$  dB in brain tissue (rotation normal probe axis)  
 Dynamic 5 mw/g to  $> 100$  mw/g;  
 Range Linearity:  $\pm 0.2$  dB  
 Surface  $\pm 0.2$  mm repeatability in air and clear liquids  
 Detection over diffuse reflecting surfaces.  
 Dimensions Overall length: 330 mm



**Photograph of the probe**

Tip length: 16 mm  
Body diameter: 12 mm  
Tip diameter: 6.8 mm  
Distance from probe tip to dipole centers: 2.7 mm  
Application General dosimetric up to 3 GHz  
Compliance tests of mobile phones  
Fast automatic scanning in arbitrary phantoms

The SAR measurements were conducted with the dosimetric probe ET3DV6 designed in the classical triangular configuration and optimized for dosimetric evaluation. The probe is constructed using the thick film technique; with printed resistive lines on ceramic substrates. The probe is equipped with an optical multi-fiber line ending at the front of the probe tip. It is connected to the EOC box on the robot arm and provides an automatic detection of the phantom surface. Half of the fibers are connected to a pulsed infrared transmitter, the other half to a synchronized receiver. As the probe approaches the surface, the reflection from the surface produces a coupling from the transmitting to the receiving fibers. This reflection increases first during the approach, reaches maximum and then decreases. If the probe is flatly touching the surface, the coupling is zero. The distance of the coupling maximum to the surface is independent of the surface reflectivity and largely independent of the surface to probe angle. The DASY3 software reads the reflection during a software approach and looks for the maximum using a 2nd order fitting. The approach is stopped when reaching the maximum.



**Inside view of  
ET3DV6 E-field Probe**

### **E-Field Probe Calibration Process**

Each probe is calibrated according to a dosimetric assessment procedure described in [6] with accuracy better than +/- 10%. The spherical isotropy was evaluated with the procedure described in [7] and found to be better than +/-0.25dB. The sensitivity parameters (NormX, NormY, NormZ), the diode compression parameter (DCP) and the conversion factor (ConvF) of the probe are tested.

The free space E-field from amplified probe outputs is determined in a test chamber. This is performed in a TEM cell for frequencies below 1 GHz, and in a waveguide above 1 GHz for free space. For the free space calibration, the probe is placed in the volumetric center of the cavity and at the proper orientation with the field. The probe is then rotated 360 degrees.

E-field temperature correlation calibration is performed in a flat phantom filled with the appropriate simulated brain tissue. The measured free space E-field in the medium correlates to temperature rise in dielectric medium. For temperature correlation calibration a RF transparent thermistor-based temperature probe is used in conjunction with the E-field probe.

### **Data Evaluation**

The DASY4 post-processing software (SEMCAD) automatically executes the following procedures to calculate the field units from the microvolt readings at the probe connector. The parameters used in the evaluation are stored in the configuration modules of the software:

Probe parameters:	- Sensitivity	Norm <sub>i</sub> , ai <sub>0</sub> , ai <sub>1</sub> , ai <sub>2</sub>
	- Conversion factor	ConvFi
	- Diode compression point	dcp <sub>i</sub>
Device parameters:	- Frequency	f
	- Crest factor	cf
Media parameters:	- Conductivity	σ
	- Density	ρ

These parameters must be set correctly in the software. They can be found in the component documents or they can be imported into the software from the configuration files issued for the DASY components. In the direct measuring mode of the multi-meter option, the parameters of the actual system setup are used. In the scan visualization and export modes, the parameters stored in the corresponding document files are used.

The first step of the evaluation is a linearization of the filtered input signal to account for the compression characteristics of the detector diode. The compensation depends on the input signal, the diode type and the DC-transmission factor from the diode to the evaluation electronics. If the exciting field is pulsed, the crest factor of the signal must be known to correctly compensate for peak power. The formula for each channel can be given as:

$$V_i = U_i + U_i^2 \cdot \frac{cf}{dcp_i}$$

With  $V_i$  = compensated signal of channel i (i = x, y, z)  
 $U_i$  = input signal of channel i (i = x, y, z)  
 cf = crest factor of exciting field (DASY parameter)  
 dcp<sub>i</sub> = diode compression point (DASY parameter)

From the compensated input signals the primary field data for each channel can be evaluated:

$$\text{E - fieldprobes : } E_i = \sqrt{\frac{V_i}{\text{Norm}_i \cdot \text{ConvF}}}$$

$$\text{H - fieldprobes : } H_i = \sqrt{V_i \cdot \frac{a_{i0} + a_{i1}f + a_{i2}f^2}{f}}$$

With  $V_i$  = compensated signal of channel i (i = x, y, z)  
 Norm<sub>i</sub> = sensor sensitivity of channel i (i = x, y, z)  
 μV/ (V/m)<sup>2</sup> for E-field probes  
 ConvF = sensitivity enhancement in solution  
 a<sub>ij</sub> = sensor sensitivity factors for H-field probes  
 f = carrier frequency [GHz]  
 E<sub>i</sub> = electric field strength of channel i in V/m  
 H<sub>i</sub> = diode compression point (DASY parameter)

The RSS value of the field components gives the total field strength (Hermitian magnitude):

$$E_{tot} = \sqrt{E_x^2 + E_y^2 + E_z^2}$$

The primary field data are used to calculate the derived field units.

$$SAR = E_{tot}^2 \cdot \frac{\sigma}{\rho \cdot 1'000}$$

With SAR = local specific absorption rate in mW/g  
 $E_{tot}$  = total field strength in V/m  
 $\sigma$  = conductivity in [mho/m] or [Siemens/m]  
 $\rho$  = equivalent tissue density in g/cm<sup>3</sup>

Note that the density is normally set to 1, to account for actual brain density rather than the density of the simulation liquid.

### Light Beam Unit

The light beam switch allows automatic “tooling” of the probe. During the process, the actual position of the probe tip with respect to the robot arm is measured, as well as the probe length and the horizontal probe offset. The software then corrects all movements, so that the robot coordinates are valid for the probe tip. The repeatability of this process is better than 0.1 mm. If a position has been taught with an aligned probe, the same position will be reached with another aligned probe within 0.1 mm, even if the other probe has different dimensions. During probe rotations, the probe tip will keep its actual position.

### Medium

#### Parameters

The parameters of the tissue simulating liquid strongly influence the SAR in the liquid. The parameters for the different frequencies are defined in the corresponding compliance standards (e.g., EN 50361, IEEE 1528-2003).

#### Parameter measurements

Several measurement systems are available for measuring the dielectric parameters of liquids:

- The open coax test method (e.g., HP85070 dielectric probe kit) is easy to use, but has only moderate accuracy. It is calibrated with open, short, and deionized water and the calibrations a critical process.
- The transmission line method (e.g., model 1500T from DAMASKOS, INC.) measures the transmission and reflection in a liquid filled high precision line. It needs standard two port calibration and is probably more accurate than the open coax method.
- The reflection line method measures the reflection in a liquid filled shorted precision lined, the method is not suitable for these liquids because of its low sensitivity.
- The slotted line method scans the field magnitude and phase along a liquid filled line. The evaluation is straight forward and only needs a simple response calibration. The method is very accurate, but can only be used in high loss liquids and at frequencies above 100 to 200MHz. Cleaning the line can be tedious.

## SAM Twin Phantom

The SAM twin phantom is a fiberglass shell phantom with 2mm shell thickness (except the ear region where shell thickness increases to 6mm). It has three measurement areas:

- Left hand
- Right hand
- Flat phantom

The phantom table comes in two sizes: A 100 x 50 x 85 cm (L x W x H) table for use with free standing robots (DASY4 professional system option) or as a second phantom and a 100 x 75 x 85 cm(L x W x H) table with reinforcements for table mounted robots (DASY4 compact system option) .

The bottom plate contains three pair of bolts for locking the device holder. The device holder positions are adjusted to the standard measurement positions in the three sections. Only one device holder is necessary if two phantoms are used (e.g., for different liquids) A white cover is provided to tap the phantom during o\_-periods to prevent water evaporation and changes in the liquid parameters. Free space scans of devices on the cover are possible. On the phantom top, three reference markers are provided to identify the phantom position with respect to the robot.

The phantom can be used with the following tissue simulating liquids:

- Water-sugar based liquids can be left permanently in the phantom. Always cover the liquid if the system is not used, otherwise the parameters will change due to water evaporation.
- Glycol based liquids should be used with care. As glycol is a softener for most plastics, the liquid should be taken out of the phantom and the phantom should be dried when the system is not used (desirable at least once a week).
- Do not use other organic solvents without previously testing the phantom resistiveness.





## Device Holder for SAM Twin Phantom

The SAR in the phantom is approximately inversely proportional to the square of the distance between the source and the liquid surface. For a source in 5mm distance, a positioning uncertainty of  $\pm 0.5\text{mm}$  would produce a SAR uncertainty of  $\pm 20\%$ . An accurate device positioning is therefore crucial for accurate and repeatable measurements. The positions, in which the devices must be measured, are defined by the standards. The DASY device holder is designed to cope with different positions given in the standard. It has two scales for the device rotation (with respect to the body axis) and the device inclination (with respect to the line between the ear reference points). The rotation centers for both scales are the ear reference point (ERP). Thus the device needs no repositioning when changing the angles.



The DASY device holder has been made out of low-loss POM material having the following dielectric parameters: relative permittivity  $\epsilon_r=3$  and loss tangent  $\tan \delta=0.02$ . The amount of dielectric material has been reduced in the closest vicinity of the device, since measurements have suggested that the influence of the clamp on the test results could thus be lowered.

## System Validation Kits

Each DASY system is equipped with one or more system validation kits. These units, together with the predefined measurement procedures within the DASY software, enable the user to conduct the system performance check and system validation. For that purpose a well defined SAR distribution in the flat section of the SAM twin phantom is produced.

System validation kit includes a dipole, tripod holder to fix it underneath the flat phantom and a corresponding distance holder. Dipoles are available for the variety of frequencies between 300MHz and 6 GHz (dipoles for other frequencies or media and other calibration conditions are available upon request).

The dipoles are highly symmetric and matched at the center frequency for the specified liquid and distance to the flat phantom (or flat section of the SAM-twin phantom). The accurate distance between the liquid surface and the dipole center is achieved with a distance holder that snaps on the dipole.

## Robot

The DASY4 system uses the high precision industrial robots RX60L, RX90 and RX90L, as well as the RX60BL and RX90BL types out of the newer series from Stäubli SA (France). The RX robot series offers many features that are important for our application:

- High precision (repeatability 0.02mm)
- High reliability (industrial design)
- Low maintenance costs (virtually maintenance-free due to direct drive gears; no belt drives)
- Jerk-free straight movements (brushless synchrony motors; no stepper motors)
- Low ELF interference (the closed metallic construction shields against motor control fields)

For the newly delivered DASY4 systems as well as for the older DASY3 systems delivered since 1999, the CS7MB robot controller version from Stäubli is used. Previously delivered systems have either a CS7 or CS7M controller; the differences to the CS7MB are mainly in the hardware, but some procedures in the robot software from Stäubli are also not completely the same. The following descriptions about robot hard- and software correspond to CS7MB controller with software version 13.1 (edit S5). The actual commands, procedures and configurations, also including details in hardware, might differ if an older robot controller is in use. In this case please also refer to the Stäubli manuals for further information.

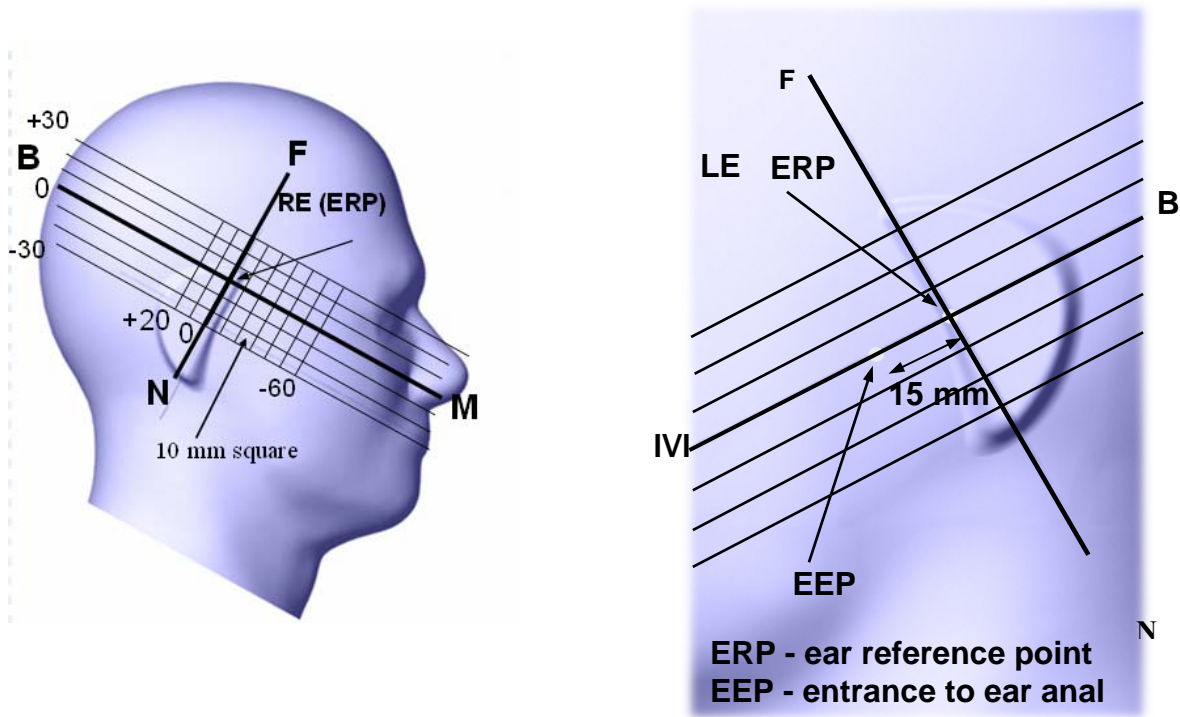


## EUT TEST STRATEGY AND METHODOLOGY

### Test Positions for Device Operating Next to a Person’s Ear

This category includes most wireless handsets with fixed, retractable or internal antennas located toward the top half of the device, with or without a foldout, sliding or similar keypad cover. The handset should have its earpiece located within the upper ¼ of the device, either along the centerline or off-centered, as perceived by its users. This type of handset should be positioned in a normal operating position with the “test device reference point” located along the “vertical centerline” on the front of the device aligned to the “ear reference point”. The “test device reference point” should be located at the same level as the center of the earpiece region. The “vertical centerline” should bisect the front surface of the handset at its top and bottom edges. A “ear reference point” is located on the outer surface of the head phantom on each ear spacer. It is located 1.5 cm above the center of the ear canal entrance in the “phantom reference plane” defined by the three lines joining the center of each “ear reference point” (left and right) and the tip of the mouth.

A handset should be initially positioned with the earpiece region pressed against the ear spacer of a head phantom. For the SCC-34/SC-2 head phantom, the device should be positioned parallel to the “N-F” line defined along the base of the ear spacer that contains the “ear reference point”. For interim head phantoms, the device should be positioned parallel to the cheek for maximum RF energy coupling. The “test device reference point” is aligned to the “ear reference point” on the head phantom and the “vertical centerline” is aligned to the “phantom reference plane”. This is called the “initial ear position”. While maintaining these three alignments, the body of the handset is gradually adjusted to each of the following positions for evaluating SAR:



## Cheek/Touch Position

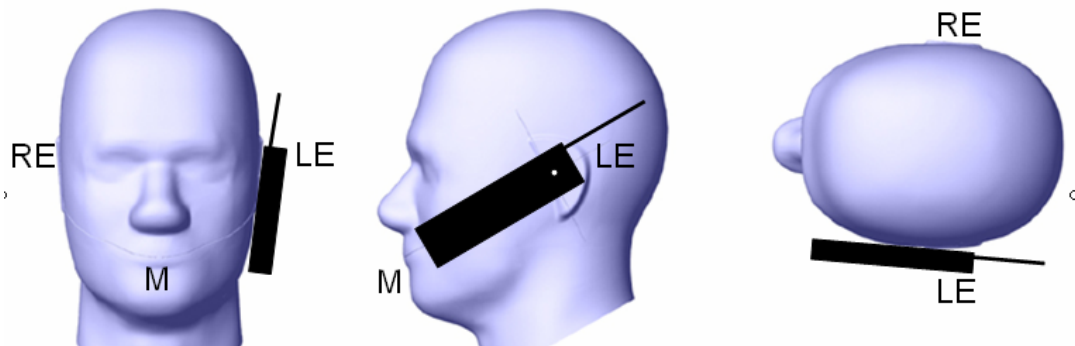
The device is brought toward the mouth of the head phantom by pivoting against the “ear reference point” or along the “N-F” line for the SCC-34/SC-2 head phantom.

This test position is established:

- When any point on the display, keypad or mouthpiece portions of the handset is in contact with the phantom.
- (or) When any portion of a foldout, sliding or similar keypad cover opened to its intended self-adjusting normal use position is in contact with the cheek or mouth of the phantom.

For existing head phantoms – when the handset loses contact with the phantom at the pivoting point, rotation should continue until the device touches the cheek of the phantom or breaks its last contact from the ear spacer.

### Cheek /Touch Position



## Ear/Tilt Position

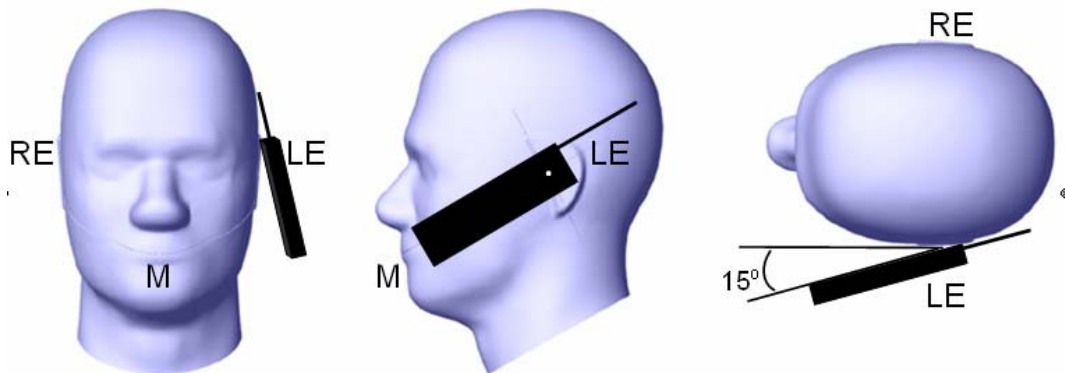
With the handset aligned in the “Cheek/Touch Position”:

- 1) If the earpiece of the handset is not in full contact with the phantom’s ear spacer (in the “Cheek/Touch position”) and the peak SAR location for the “Cheek/Touch” position is located at the ear spacer region or corresponds to the earpiece region of the handset, the device should be returned to the “initial ear position” by rotating it away from the mouth until the earpiece is in full contact with the ear spacer.
- 2) (otherwise) The handset should be moved (translated) away from the cheek perpendicular to the line passes through both “ear reference points” (note: one of these ear reference points may not physically exist on a split head model) for approximate 2-3 cm. While it is in this position, the device handset is tilted away from the mouth with respect to the “test device reference point” until the inside angle between the vertical centerline on the front surface of the phone and the horizontal line passing through the ear reference point is by 15 80°. After the tilt, it is then moved (translated) back toward the head perpendicular to the line passes through both “ear reference points” until the device touches the phantom or the ear spacer. If the antenna touches the head first, the positioning process should be repeated with a tilt angle less than 15 80° so that the device and its antenna would touch the phantom simultaneously. This test position may require a device holder or positioner to achieve the translation and tilting with acceptable positioning repeatability.

If a device is also designed to transmit with its keypad cover closed for operating in the head position, such positions should also be considered in the SAR evaluation. The device should be tested on the

left and right side of the head phantom in the “Cheek/Touch” and “Ear/Tilt” positions. When applicable, each configuration should be tested with the antenna in its fully extended and fully retracted positions. These test configurations should be tested at the high, middle and low frequency channels of each operating mode; for example, AMPS, CDMA, and TDMA. If the SAR measured at the middle channel for each test configuration (left, right, Cheek/Touch, Tile/Ear, extended and retracted) is at least 2.0 dB lower than the SAR limit, testing at the high and low channels is optional for such test configuration(s). If the transmission band of the test device is less than 10 MHz, testing at the high and low frequency channels is optional.

### Ear /Tilt 15° Position



### **Test positions for body-worn and other configurations**

Body-worn operating configurations should be tested with the belt-clips and holsters attached to the device and positioned against a flat phantom in normal use configurations. Devices with a headset output should be tested with a headset connected to the device. When multiple accessories that do not contain metallic components are supplied with the device, the device may be tested with only the accessory that dictates the closest spacing to the body. When multiple accessories that contain metallic components are supplied with the device, the device must be tested with each accessory that contains a unique metallic component. If multiple accessories share an identical metallic component (e.g., the same metallic belt-clip used with different holsters with no other metallic components), only the accessory that dictates the closest spacing to the body must be tested.

Body-worn accessories may not always be supplied or available as options for some devices that are intended to be authorized for body-worn use. A separation distance of 1.5 cm between the back of the device and a flat phantom is recommended for testing body-worn SAR compliance under such circumstances. Other separation distances may be used, but they should not exceed 2.5 cm. In these cases, the device may use body-worn accessories that provide a separation distance greater than that tested for the device provided however that the accessory contains no metallic components.

### **SAR Tests in Mouth and Jaw Regions of the SAM Phantom**

Antennas located near the bottom of a phone may require SAR measurements around the mouth and jaw regions of the SAM head phantom. This typically applies to clam-shell style phones that are generally longer in the unfolded normal use positions or to certain older style long rectangular phones. It has been known for some time that there are SAR measurement difficulties in these regions of the SAM phantom. SAR probes are calibrated in tissue-equivalent liquids with sufficient separation between the probe

sensors and nearby physical boundaries to ensure scattering does not affect probe calibration. When the probe tip is moved into tight regions with multiple boundaries surrounding its sensors, probe calibration and measurement accuracy can become questionable. In addition, these measurement locations often require a probe to be tilted at steep angles, where it may no longer comply with calibration requirements and measurement protocols, or satisfy the required measurement uncertainty. In some situations it is not feasible to tilt the probe or rotate the phantom, as suggested by measurement standards, to conduct these measurements.

In order to ensure there is sufficient conservativeness for ensuring compliance until practical solutions are available, additional measurement considerations are necessary to address these technical difficulties. When measurements are required near the mouth, nose, jaw or similar tight regions of the SAM phantom, area or zoom scans are often unable to fully enclose the peak SAR location as required by IEEE 1528 and Supplement C, due to probe orientation and positioning difficulties. Even when limited measurements are possible, the test results could be questionable due to probe calibration and measurement uncertainty issues. Under these circumstances, the following procedures apply. The SAR required in these regions of SAM should be measured using a flat phantom. Rectangular shaped phones should be positioned with its bottom edge positioned from the flat phantom with the same distance provided by the cheek touching position using SAM. The ear reference point (ERP, as defined for SAM) of the phone should be positioned  $\frac{1}{2}$  cm from the flat phantom shell. Clam-shell phones should be positioned with the hinge against a smooth edge of the flat phantom where the upper half of the phone is unfolded and extended beyond the phantom side wall. The lower half of the phone is secured in the test device holder at a fixed distance below the flat phantom determined by the minimum separation along the lower edge of the phone in the cheek touching position using SAM. If there is substantial variation in separation distance along the lower edge of a clam-shell phone when placed in the cheek touching position using SAM, the FCC Laboratory may be contacted for additional guidance to position the phone for testing.

The flat phantom data should allow test results to be compared uniformly across measurement systems, until suitable solutions are available in measurement standards to address certain probe calibration and positioning issues, due to implementation differences between horizontal and up-right SAM configurations. These flat phantom procedures are only applicable to stand-alone SAR evaluation in tight regions of the SAM phantom, where measurement is not feasible or test results can be questionable due to probe calibration and accessibility issues. Details on device positioning and photos showing how separation distances are determined should be included in the SAR report. SAR for other regions of the head must be evaluated using SAM; therefore, a phone with antennas at different locations may require flat and SAM phantom evaluation for the different antennas. When simultaneous transmission SAR evaluation is necessary in these regions of SAM and until practical solutions are available, the FCC Laboratory should be contacted for interim guidance.

## SAR Evaluation Procedure

The evaluation was performed with the following procedure:

**Step 1:** Measurement of the SAR value at a fixed location above the ear point or central position was used as a reference value for assessing the power drop. The SAR at this point is measured at the start of the test and then again at the end of the testing.

**Step 2:** The SAR distribution at the exposed side of the head was measured at a distance of 4 mm from the inner surface of the shell. The area covered the entire dimension of the head or EUT and the horizontal grid spacing was 15 mm x 15 mm. Based on these data, the area of the maximum absorption was determined by spline interpolation. The first Area Scan covers the entire dimension of the EUT to ensure that the hotspot was correctly identified.

**Step 3:** Around this point, a volume of 30 mm x 30 mm x 21 mm was assessed by measuring 5 x 5 x 7 points. On the basis of this data set, the spatial peak SAR value was evaluated under the following procedure:

1. The data at the surface were extrapolated, since the center of the dipoles is 1.2 mm away from the tip of the probe and the distance between the surface and the lowest measuring point is 1.3 mm. The extrapolation was based on a least square algorithm. A polynomial of the fourth order was calculated through the points in z-axes. This polynomial was then used to evaluate the points between the surface and the probe tip.
2. The maximum interpolated value was searched with a straightforward algorithm. Around this maximum the SAR values averaged over the spatial volumes (1 g or 10 g) were computed by the 3D-Spline interpolation algorithm. The 3D-Spline is composed of three one dimensional splines with the "Not a knot"-condition (in x, y and z-directions). The volume was integrated with the trapezoidal-algorithm. One thousand points (10 x 10 x 10) were interpolated to calculate the averages.
3. All neighboring volumes were evaluated until no neighboring volume with a higher average value was found.

**Step 4:** Re-measurement of the SAR value at the same location as in Step 1. If the value changed by more than 5%, the evaluation was repeated.



## DASY4 SAR Evaluation Procedure

### Step 1: Power Reference Measurement

The Power Reference Measurement and Power Drift Measurement jobs are useful jobs for monitoring the power drift of the device under test in the batch process. Both jobs measure the field at a specified reference position, at a selectable distance from the phantom surface. The reference position can be either the selected section's grid reference point or a user point in this section. The reference job projects the selected point onto the phantom surface, orients the probe perpendicularly to the surface, and approaches the surface using the selected detection method. The Minimum distance of probe sensors to surface determines the closest measurement point to phantom surface. By default, the Minimum distance of probe sensors to surface is 4mm. This distance can be modified by the user, but cannot be smaller than the Distance of sensor calibration points to probe tip as defined in the probe properties (for example, 2.7mm for an ET3DV6 probe type).

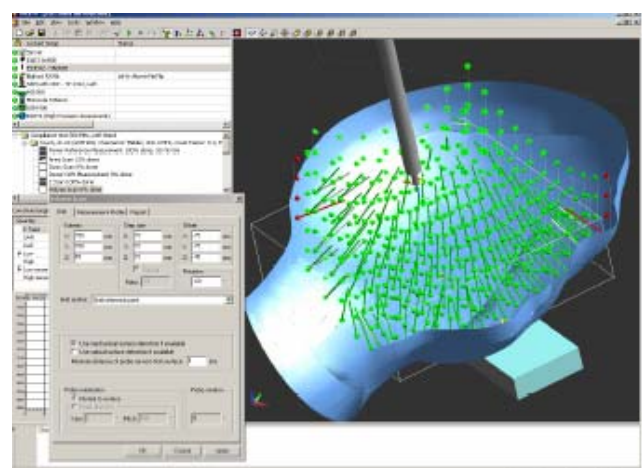
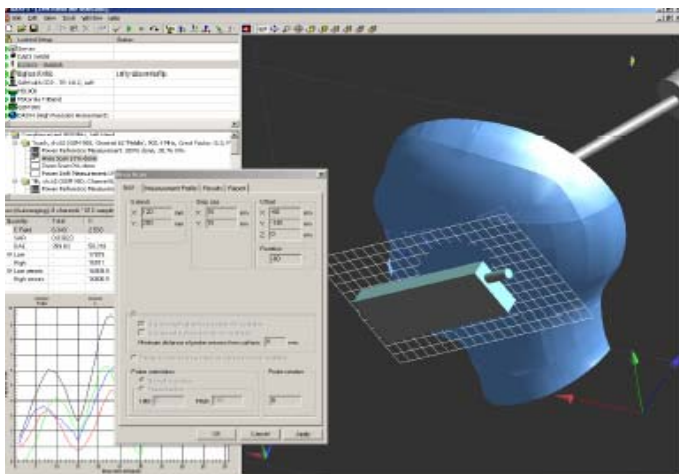
### Step 2: Area Scan

The Area Scan is used as a fast scan in two dimensions to find the area of high field values, before doing a finer measurement around the hot spot. The sophisticated interpolation routines implemented in DASY4 software can find the maximum locations even in relatively coarse grids.

The scanning area is defined by an editable grid. This grid is anchored at the grid reference point of the selected section in the phantom. When the Area Scan's property sheet is brought-up, grid settings can be edited by a user.

When an Area Scan has measured all reachable points, it computes the field maxima found in the scanned area, within a range of the global maximum. The range (in dB) is specified in the standards for compliance testing. For example, a 2 dB range is required in IEEE 1528-2003, EN50361 and IEC 62209 standards, whereby 3 dB is a requirement when compliance is assessed in accordance with the ARIB standard (Japan). If only one Zoom Scan follows the Area Scan, then only the absolute maximum will be taken as reference. For cases where multiple maximums are detected, the number of Zoom Scans has to be increased accordingly.

After measurement is completed, all maxima and their coordinates are listed in the Results property page. The maximum selected in the list is highlighted in the 3-D view. For the secondary maxima returned from an Area Scan, the user can specify a lower limit (peak SAR value), in addition to the Find secondary maxima within x dB condition. Only the primary maximum and any secondary maxima within x dB from the primary maximum and above this limit will be measured.





### Step 3: Zoom Scan

Zoom Scans are used to assess the peak spatial SAR values within a cubic averaging volume containing 1 g and 10 g of simulated tissue. The default Zoom Scan measures 5 x 5 x 7 points within a cube whose base faces are centered around the maxima found in a preceding area scan job within the same procedure. When the measurement is done, the Zoom Scan evaluates the averaged SAR for 1 g and 10 g and displays these values next to the job's label.

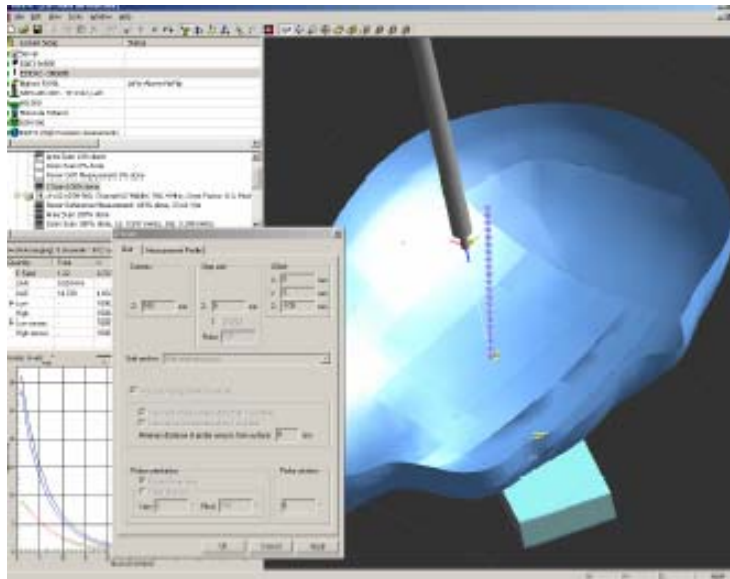
### Step 4: Power drift measurement

The Power Drift Measurement job measures the field at the same location as the most recent power reference measurement job within the same procedure, and with the same settings. The Power Drift Measurement gives the field difference in dB from the reading conducted within the last Power Reference Measurement. Several drift measurements are possible for one reference measurement.

This allows a user to monitor the power drift of the device under test within a batch process. The measurement procedure is the same as Step 1.

### Step 5: Z-Scan

The Z Scan job measures points along a vertical straight line. The line runs along the Z axis of a one-dimensional grid. A user can anchor the grid to the section reference point, to any defined user point or to the current probe location. As with any other grids, the local Z axis of the anchor location establishes the Z axis of the grid.



## TESTING EQUIPMENT

### Equipments List & Calibration Info

Type / Model	Cal. Due Date	S/N:
DASY4 Professional Dosimetric System	N/A	N/A
Robot RX60L	N/A	CS7MBSP / 467
Robot Controller	N/A	F01/5J72A1/A/01
Dell Computer Dimension 3000	N/A	N/A
SPEAG EDC3	N/A	N/A
SPEAG DAE3	2008-11-22	456
DASY4 Measurement Server	N/A	1176
SPEAG E-Field Probe ET3DV6	2009-09-23	1604
Antenna, Dipole, D900V2	2008-11-07	122
Antenna, Dipole, ALS-D-1900-S-2	2010-09-01	210-00710
835 MHz Head Liquid	Each Time	N/A
835 MHz Body Liquid	Each Time	N/A
1900 MHz Head Liquid	Each Time	N/A
1900 MHz Body Liquid	Each Time	N/A
Agilent, Spectrum Analyzer E4446A	2009-05-19	US44300386
Microwave Amp. 8349A	N/A	2644A02662
Power Meter Agilent E4419B	2008-09-13	MY4121511
Power Sensor Agilent E4412A	2008-10-12	MY41497252
Agilent E5515C	2009-08-08	GB44051221
Dielectric Probe Kit HP85070A	N/A	US99360201
Agilent, Signal Generator, 8648C	2008-12-13	3347M00143
Amplifier, ST181-20	N/A	E012-0101
Antenna, Horn SAS-200/571	2009-04-20	A052704

# SAR MEASUREMENT SYSTEM VERIFICATION

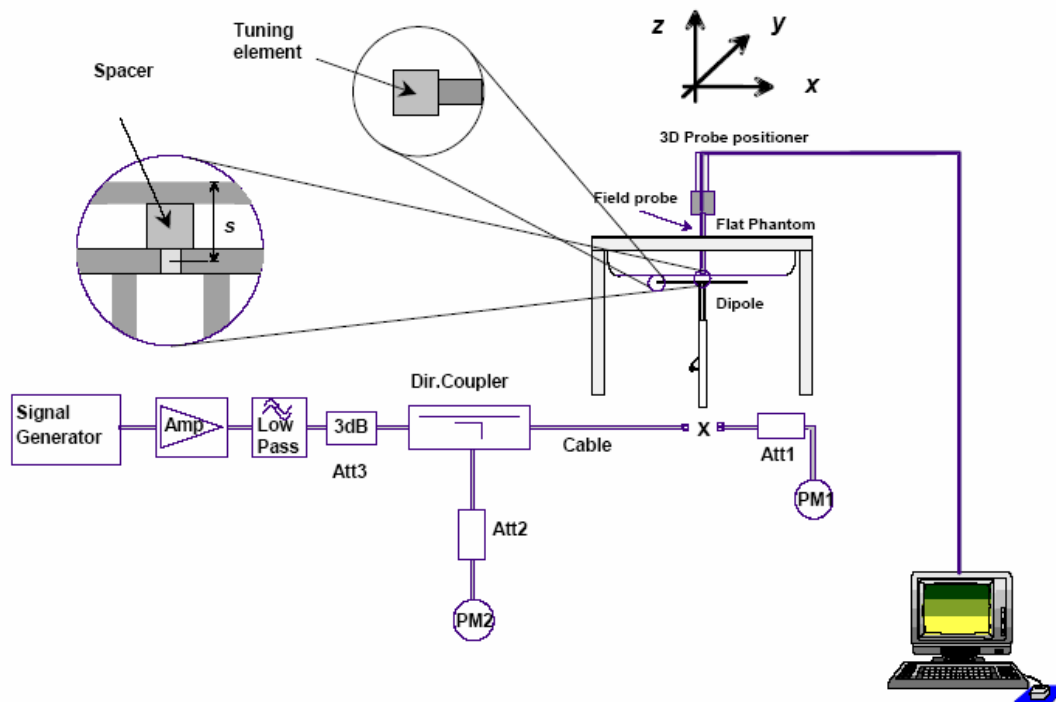
## System Accuracy Verification

Prior to the assessment, the system validation kit was used to test whether the system was operating within its specifications of  $\pm 10\%$ . The validation results are tabulated below. And also the corresponding SAR plot is attached as well in the SAR plots files.

### IEEE P1528 recommended reference value for Head

Frequency (MHz)	1 g SAR (W/Kg)	10 g SAR (W/Kg)	Local SAR at surface (above feed point)	Local SAR at surface ( $v=2\text{cm}$ offset from feed point)
300	3.0	2.0	4.4	2.1
450	4.9	3.3	7.2	3.2
835	9.5	6.2	14.1	4.9
900	10.8	6.9	16.4	5.4
1450	29.0	16.0	50.2	6.5
1800	38.1	19.8	69.5	6.8
1900	39.7	20.5	72.1	6.6
2000	41.1	21.1	74.6	6.5
2450	52.4	24.0	104.2	7.7
3000	63.8	25.7	140.2	9.5

## System Setup Block Diagram



## SAR MEASUREMENT RESULTS

This page summarizes the results of the performed dosimetric evaluation. The plots with the corresponding SAR distributions, which reveal information about the location of the maximum SAR with respect to the device, could be found in Appendix E.

### SAR Body and Head Worst-Case Test Data

#### Environmental Conditions

<b>Temperature:</b>	21° C
<b>Relative Humidity:</b>	57% C
<b>ATM Pressure:</b>	1021 mbar

Testing was performed by Jimmy Nguyen on 2008-10-29

#### Cellular Band:

EUT Position	Accessory	Frequency (MHz)	Conducted Power (dBm)	Liquid	Phantom	Measured SAR Value (1g Tissue) (mW/g)	Limit (mW/g)	Ref. Plot #
Right Head Cheek (Mid CH)	/	836.60	32.89	Head	Right Head	0.352	1.6	1
Right Head Tilt (Mid CH)	/	836.60	32.89	Head	Right Head	0.279	1.6	2
Left Head Cheek (Mid CH)	/	836.60	32.89	Head	Left Head	0.360	1.6	3
Left Head Tilt (Mid CH)	/	836.60	32.89	Head	Left Head	0.293	1.6	4
Body-Worn (Mid CH)	Headset	836.60	32.89	Body	Flat	0.184	1.6	5

**PCS Band:**

EUT Position	Accessory	Frequency (MHz)	Conducted Power (dBm)	Liquid	Phantom	Measured SAR Value (1g Tissue) (mW/g)	Limit (mW/g)	Ref. Plot #
Right Head Cheek (Mid CH)	/	1880.0	28.50	Head	Right Head	0.282	1.6	6
Right Head Tilt (Mid CH)	/	1880.0	28.50	Head	Right Head	0.192	1.6	7
Left Head Cheek (Mid CH)	/	1880.0	28.50	Head	Left Head	0.273	1.6	8
Left Head Tilt (Mid CH)	/	1880.0	28.550	Body	Left Head	0.187	1.6	9
Body-Worn (Mid CH)	Headset	1880.0	28.50	Body	Flat	0.117	1.6	10

## APPENDIX A – MEASUREMENT UNCERTAINTY

The uncertainty budget has been determined for the DASY4 measurement system and is given in the following Table.

SASY4 Uncertainty Budget According to IEEE 1528								
Error Description	Uncertainty Value	Prob. Dist.	Div.	(c i) 1g	(c i) 10g	Std. Unc. (1g)	Std. Unc. (10g)	(v i) veff
<b>Measurement System</b>								
Probe Calibration	± 5.9%	N	1	1	1	± 5.9%	± 5.9%	∞
Axial Isotropy	± 4.7%	R	$\sqrt{3}$	0.7	0.7	± 1.9%	± 1.9%	∞
Hemispherical Isotropy	± 9.6%	R	$\sqrt{3}$	0.7	0.7	± 3.9%	± 3.9%	∞
Boundary Effects	± 1.0%	R	$\sqrt{3}$	1	1	± 0.6%	± 0.6%	∞
Linearity	± 4.7%	R	$\sqrt{3}$	1	1	± 2.7%	± 2.7%	∞
System Detection Limits	± 1.0%	R	$\sqrt{3}$	1	1	± 0.6%	± 0.6%	∞
Readout Electronics	± 0.3%	N	1	1	1	± 0.3%	± 0.3%	∞
Response Time	± 0.8%	R	$\sqrt{3}$	1	1	± 0.5%	± 0.5%	∞
Integration Time	± 2.6%	R	$\sqrt{3}$	1	1	± 1.5%	± 1.5%	∞
RF Ambient Conditions	± 3.0%	R	$\sqrt{3}$	1	1	± 1.7%	± 1.7%	∞
Probe Positioner	± 0.4%	R	$\sqrt{3}$	1	1	± 0.2%	± 0.2%	∞
Probe Positioning	± 2.9%	R	$\sqrt{3}$	1	1	± 1.7%	± 1.7%	∞
Max. SAR Eval.	± 1.0%	R	$\sqrt{3}$	1	1	± 0.6%	± 0.6%	∞
<b>Test Sample Related</b>								
Device Positioning	± 2.9%	N	1	1	1	± 2.9%	± 2.9%	145
Device Holder	± 3.6%	N	1	1	1	± 3.6%	± 2.6%	5
Power Drift	± 5.0%	R		1	1	± 2.9%	± 2.9%	∞
<b>Phantom and Setup</b>								
Phantom Uncertainty	± 4.0%	R	$\sqrt{3}$	1	1	± 2.3%	± 2.3%	∞
Liquid Conductivity (Target)	± 5.0%	R	$\sqrt{3}$	0.64	0.43	± 1.8%	± 1.2%	∞
Liquid Conductivity (meas.)	± 2.5%	N	1	0.64	0.43	± 1.6%	± 1.1%	∞
Liquid Permittivity (Target)	± 5.0%	R	$\sqrt{3}$	0.6	0.49	± 1.7%	± 1.4%	∞
Liquid Permittivity (meas.)	± 2.5%	N	1	0.6	0.49	± 1.5%	± 1%	∞
Combined Std. Uncertainty						± 10.8%	± 10.6%	330
Expanded STD Uncertainty						± 21.6%	± 21.1%	

<b>SASY4 Uncertainty Budget According to CENELEC EN 50361</b>								
Error Description	Uncertainty Value	Prob. Dist.	Div.	(c i) 1g	(c i) 10g	Std. Unc. (1g)	Std. Unc. (10g)	(v i) v <sub>eff</sub>
<b>Measurement System</b>								
Probe Calibration	± 5.9%	N	1	1	1	± 5.9%	± 5.9%	∞
Axial Isotropy	± 4.7%	R	√3	0.7	0.7	± 1.9%	± 1.9%	∞
Spherical Isotropy	± 9.6%	R	√3	0.7	0.7	± 3.9%	± 3.9%	∞
Probe Linearity	± 4.7%	R	√3	1	1	± 2.7%	± 0.6%	∞
Detection Limits	± 1.0%	R	√3	1	1	± 0.6%	± 2.7%	∞
Boundary Effects	± 1.0%	R	√3	1	1	± 0.6%	± 0.6%	∞
Readout Electronics	± 0.3%	N	1	1	1	± 0.3%	± 0.3%	∞
Response Time	± 0.8%	N	1	1	1	± 0.8%	± 0.5%	∞
Noise	± 0.0%	N	1	1	1	± 0.0%	± 1.5%	∞
Integration Time	± 2.6%	N	1	1	1	± 2.6%	± 1.7%	∞
<b>Mechanical Constraints</b>								
Scanning System	± 0.4%	R	√3	1	1	± 0.2%	± 1.7%	∞
Phantom Shell	± 4.0%	R	√3	1	1	± 2.3%	± 0.6%	∞
Probe Positioning	± 2.9%	R	√3	1	1	± 1.7%	± 2.9%	∞
Device Positioning	± 2.9%	N	1	1	1	± 2.9%	± 2.6%	145
<b>Physical Parameters</b>								
Liquid Conductivity (Target)	± 5.0%	R	√3	0.7	0.5	± 2.0%	± 1.2%	∞
Liquid Conductivity (meas.)	± 4.3%	R	√3	0.7	0.5	± 1.7%	± 1.1%	∞
Liquid Permittivity (Target)	± 5.0%	R	√3	0.6	0.5	± 1.7%	± 1.4%	∞
Liquid Permittivity (meas.)	± 4.3%	R	√3	0.6	0.5	± 1.5%	± 1%	∞
Power Drift	± 5.0%	R	√3	1	1	± 2.9%	± 10.6%	∞
RF Ambient Conditions	± 3.0%	R	√3	1	1	± 1.7%	± 21.1%	∞
<b>Post-Processing</b>								
Extrap. and Integration	± 1.0%	R	√3	1	1	± 0.6%	± 2.3%	∞
Combined Std. Uncertainty						± 10.9%	± 10.6%	18125
Expanded Std. Uncertainty						± 21.7%	± 12.1%	

# APPENDIX B – PROBE CALIBRATION CERTIFICATES

**Calibration Laboratory of  
Schmid & Partner  
Engineering AG**  
Zeughausstrasse 43, 8004 Zurich, Switzerland



**S** Schweizerischer Kalibrierdienst  
**C** Service suisse d'étalonnage  
**S** Servizio svizzero di taratura  
**S** Swiss Calibration Service

Accredited by the Swiss Accreditation Service (SAS)  
The Swiss Accreditation Service is one of the signatories to the EA  
Multilateral Agreement for the recognition of calibration certificates

Accreditation No.: **SCS 108**

Client **BACL**

Certificate No: **ET3-1604\_Sep08**

## CALIBRATION CERTIFICATE

Object **ET3DV6 - SN:1604**

Calibration procedure(s) **QA CAL-01.v6 and QA CAL-23.v3  
Calibration procedure for dosimetric E-field probes**

Calibration date: **September 23, 2008**

Condition of the calibrated item **In Tolerance**

This calibration certificate documents the traceability to national standards, which realize the physical units of measurements (SI).  
The measurements and the uncertainties with confidence probability are given on the following pages and are part of the certificate.

All calibrations have been conducted in the closed laboratory facility: environment temperature (22 ± 3)°C and humidity < 70%.

Calibration Equipment used (M&TE critical for calibration)

Primary Standards	ID #	Cal Date (Certificate No.)	Scheduled Calibration
Power meter E4419B	GB41293874	1-Apr-08 (No. 217-00788)	Apr-09
Power sensor E4412A	MY41495277	1-Apr-08 (No. 217-00788)	Apr-09
Power sensor E4412A	MY41498087	1-Apr-08 (No. 217-00788)	Apr-09
Reference 3 dB Attenuator	SN: S5054 (3c)	1-Jul-08 (No. 217-00865)	Jul-09
Reference 20 dB Attenuator	SN: S5086 (20b)	31-Mar-08 (No. 217-00787)	Apr-09
Reference 30 dB Attenuator	SN: S5129 (30b)	1-Jul-08 (No. 217-00866)	Jul-09
Reference Probe ES3DV2	SN: 3013	2-Jan-08 (No. ES3-3013_Jan08)	Jan-09
DAE4	SN: 660	9-Sep-08 (No. DAE4-660_Sep08)	Sep-09
Secondary Standards	ID #	Check Date (in house)	Scheduled Check
RF generator HP 8648C	US3642U01700	4-Aug-99 (in house check Oct-07)	In house check: Oct-09
Network Analyzer HP 8753E	US37390585	18-Oct-01 (in house check Oct-07)	In house check: Oct-08

	Name	Function	Signature
Calibrated by:	Katja Pokovic	Technical Manager	
Approved by:	Fin Bomholt	R&D Director	

Issued: September 23, 2008

This calibration certificate shall not be reproduced except in full without written approval of the laboratory.



**Calibration Laboratory of  
Schmid & Partner  
Engineering AG**  
Zaughausstrasse 43, 8004 Zurich, Switzerland



**S** Schweizerischer Kalibrierdienst  
**C** Service suisse d'étalonnage  
**S** Servizio svizzero di taratura  
**S** Swiss Calibration Service

Accredited by the Swiss Accreditation Service (SAS)  
The Swiss Accreditation Service is one of the signatories to the EA  
Multilateral Agreement for the recognition of calibration certificates

Accreditation No.: **SCS 108**

#### Glossary:

TSL	tissue simulating liquid
NORM <sub>x,y,z</sub>	sensitivity in free space
ConvF	sensitivity in TSL / NORM <sub>x,y,z</sub>
DCP	diode compression point
Polarization $\varphi$	$\varphi$ rotation around probe axis
Polarization $\vartheta$	$\vartheta$ rotation around an axis that is in the plane normal to probe axis (at measurement center), i.e., $\vartheta = 0$ is normal to probe axis

#### Calibration is Performed According to the Following Standards:

- IEEE Std 1528-2003, "IEEE Recommended Practice for Determining the Peak Spatial-Averaged Specific Absorption Rate (SAR) in the Human Head from Wireless Communications Devices: Measurement Techniques", December 2003
- IEC 62209-1, "Procedure to measure the Specific Absorption Rate (SAR) for hand-held devices used in close proximity to the ear (frequency range of 300 MHz to 3 GHz)", February 2005

#### Methods Applied and Interpretation of Parameters:

- NORM<sub>x,y,z</sub>**: Assessed for E-field polarization  $\vartheta = 0$  ( $f \leq 900$  MHz in TEM-cell;  $f > 1800$  MHz: R22 waveguide). NORM<sub>x,y,z</sub> are only intermediate values, i.e., the uncertainties of NORM<sub>x,y,z</sub> does not effect the E<sup>2</sup>-field uncertainty inside TSL (see below ConvF).
- NORM(f)<sub>x,y,z</sub>** = NORM<sub>x,y,z</sub> \* frequency\_response (see Frequency Response Chart). This linearization is implemented in DASY4 software versions later than 4.2. The uncertainty of the frequency response is included in the stated uncertainty of ConvF.
- DCP<sub>x,y,z</sub>**: DCP are numerical linearization parameters assessed based on the data of power sweep (no uncertainty required). DCP does not depend on frequency nor media.
- ConvF and Boundary Effect Parameters**: Assessed in flat phantom using E-field (or Temperature Transfer Standard for  $f \leq 800$  MHz) and inside waveguide using analytical field distributions based on power measurements for  $f > 800$  MHz. The same setups are used for assessment of the parameters applied for boundary compensation (alpha, depth) of which typical uncertainty values are given. These parameters are used in DASY4 software to improve probe accuracy close to the boundary. The sensitivity in TSL corresponds to NORM<sub>x,y,z</sub> \* ConvF whereby the uncertainty corresponds to that given for ConvF. A frequency dependent ConvF is used in DASY version 4.4 and higher which allows extending the validity from  $\pm 50$  MHz to  $\pm 100$  MHz.
- Spherical isotropy (3D deviation from isotropy)**: in a field of low gradients realized using a flat phantom exposed by a patch antenna.
- Sensor Offset**: The sensor offset corresponds to the offset of virtual measurement center from the probe tip (on probe axis). No tolerance required.

**ET3DV6 SN:1604**

**September 23, 2008**

# Probe ET3DV6

## SN:1604

Manufactured:	July 30, 2001
Last calibrated:	August 28, 2007
Recalibrated:	September 23, 2008

**Calibrated for DASYS Systems**

(Note: non-compatible with DASYS2 system!)

ET3DV6 SN:1604

September 23, 2008

**DASY - Parameters of Probe: ET3DV6 SN:1604**

**Sensitivity in Free Space<sup>A</sup>**

**Diode Compression<sup>B</sup>**

NormX	1.93 ± 10.1%	$\mu V/(V/m)^2$	DCP X	91 mV
NormY	1.84 ± 10.1%	$\mu V/(V/m)^2$	DCP Y	89 mV
NormZ	1.89 ± 10.1%	$\mu V/(V/m)^2$	DCP Z	90 mV

**Sensitivity in Tissue Simulating Liquid (Conversion Factors)**

Please see Page 8.

**Boundary Effect**

**TSL                    900 MHz    Typical SAR gradient: 5 % per mm**

Sensor Center to Phantom Surface Distance		<b>3.7 mm</b>	<b>4.7 mm</b>
SAR <sub>bo</sub> [%]	Without Correction Algorithm	10.0	6.0
SAR <sub>bo</sub> [%]	With Correction Algorithm	0.8	0.3

**TSL                    1810 MHz    Typical SAR gradient: 10 % per mm**

Sensor Center to Phantom Surface Distance		<b>3.7 mm</b>	<b>4.7 mm</b>
SAR <sub>bo</sub> [%]	Without Correction Algorithm	10.6	6.5
SAR <sub>bo</sub> [%]	With Correction Algorithm	0.9	0.6

**Sensor Offset**

Probe Tip to Sensor Center                    **2.7 mm**

**The reported uncertainty of measurement is stated as the standard uncertainty of measurement multiplied by the coverage factor k=2, which for a normal distribution corresponds to a coverage probability of approximately 95%.**

<sup>A</sup> The uncertainties of NormX,Y,Z do not affect the E<sup>2</sup>-field uncertainty inside TSL (see Page 8).

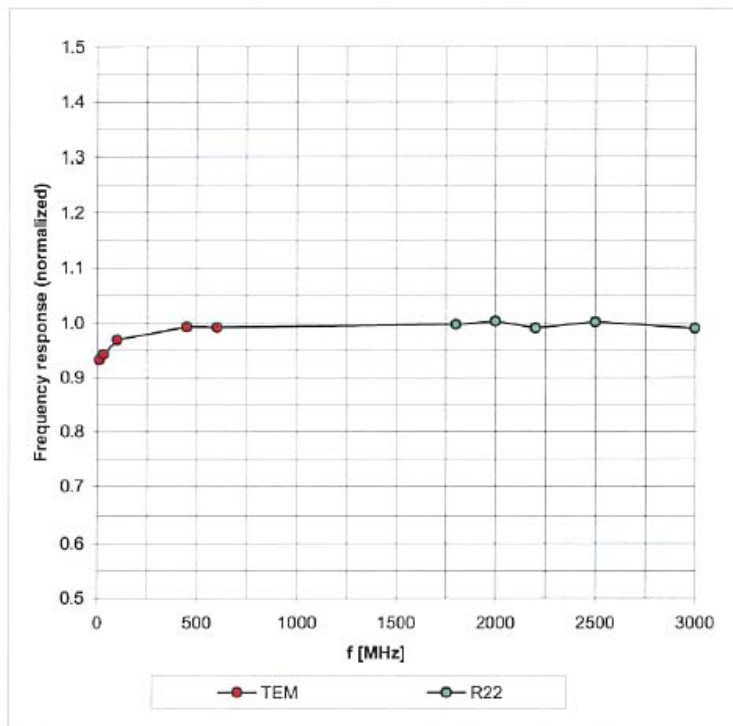
<sup>B</sup> Numerical linearization parameter: uncertainty not required.

ET3DV6 SN:1604

September 23, 2008

### Frequency Response of E-Field

(TEM-Cell:ifi110 EXX, Waveguide: R22)

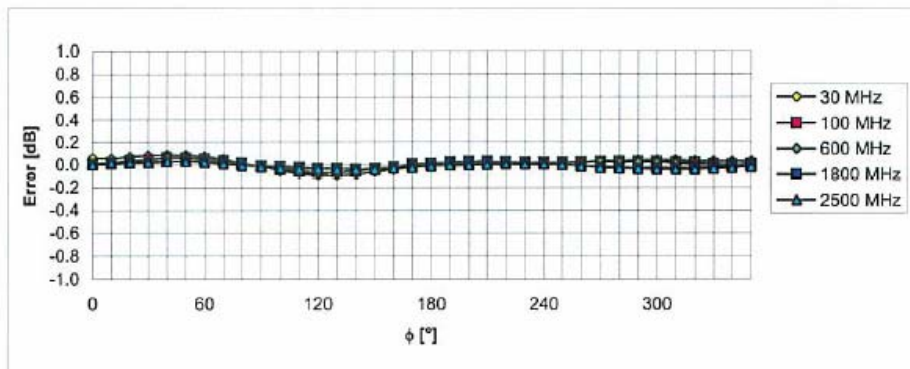
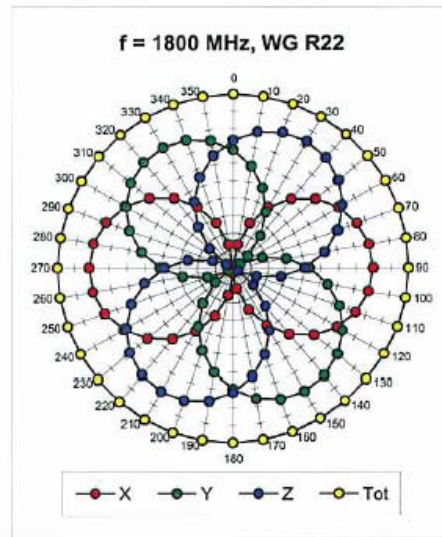
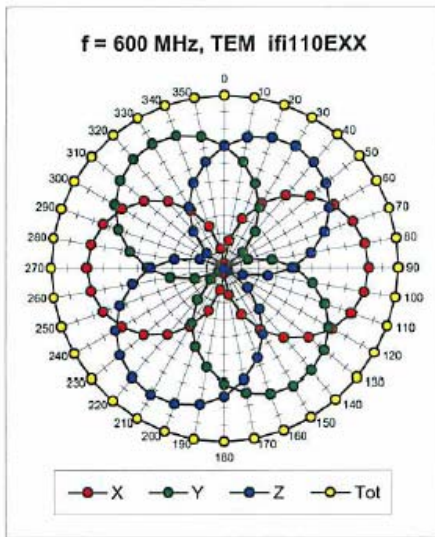


Uncertainty of Frequency Response of E-field:  $\pm 6.3\%$  ( $k=2$ )

ET3DV6 SN:1604

September 23, 2008

### Receiving Pattern ( $\phi$ ), $\vartheta = 0^\circ$

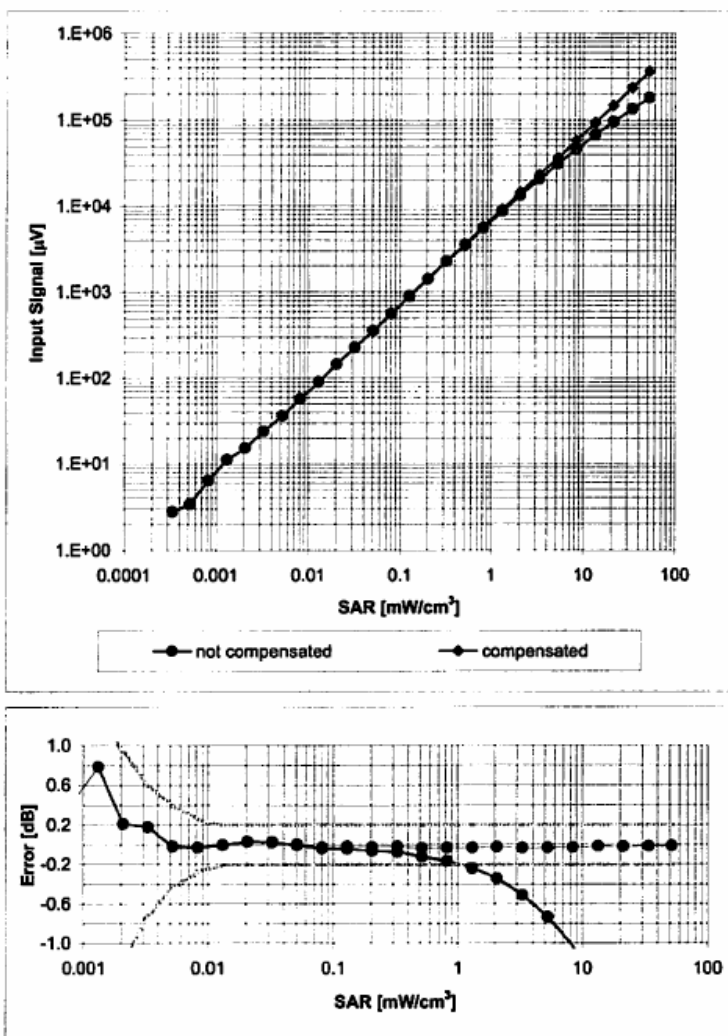


Uncertainty of Axial Isotropy Assessment:  $\pm 0.5\%$  ( $k=2$ )

ET3DV6 SN:1604

September 23, 2008

### Dynamic Range $f(SAR_{head})$ (Waveguide R22, $f = 1800$ MHz)

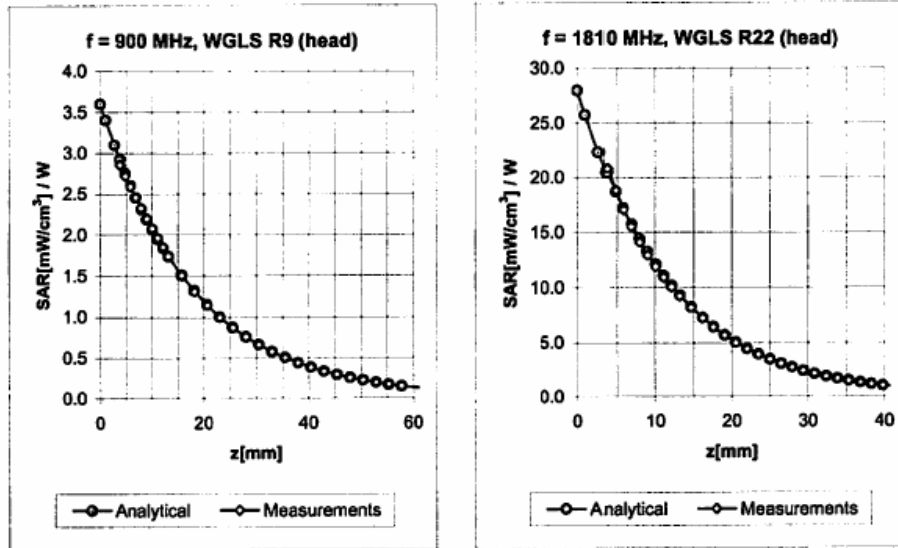


Uncertainty of Linearity Assessment:  $\pm 0.6\%$  ( $k=2$ )

ET3DV6 SN:1604

September 23, 2008

### Conversion Factor Assessment



f [MHz]	Validity [MHz] <sup>c</sup>	TSL	Permittivity	Conductivity	Alpha	Depth	ConvF Uncertainty
835	± 50 / ± 100	Head	41.5 ± 5%	0.90 ± 5%	0.59	2.21	6.46 ± 11.0% (k=2)
900	± 50 / ± 100	Head	41.5 ± 5%	0.97 ± 5%	0.58	2.28	6.23 ± 11.0% (k=2)
1810	± 50 / ± 100	Head	40.0 ± 5%	1.40 ± 5%	0.65	2.01	5.30 ± 11.0% (k=2)
1900	± 50 / ± 101	Head	40.0 ± 5%	1.40 ± 5%	0.76	1.75	5.18 ± 11.0% (k=2)
2450	± 50 / ± 100	Head	39.2 ± 5%	1.80 ± 5%	0.85	1.55	4.59 ± 11.0% (k=2)
835	± 50 / ± 100	Body	55.2 ± 5%	0.97 ± 5%	0.58	2.33	6.23 ± 11.0% (k=2)
900	± 50 / ± 100	Body	55.0 ± 5%	1.05 ± 5%	0.59	2.29	6.08 ± 11.0% (k=2)
1810	± 50 / ± 100	Body	53.3 ± 5%	1.52 ± 5%	0.69	2.04	4.64 ± 11.0% (k=2)
1900	± 50 / ± 100	Body	53.3 ± 5%	1.52 ± 5%	0.88	1.61	4.52 ± 11.0% (k=2)
2450	± 50 / ± 100	Body	52.7 ± 5%	1.95 ± 5%	0.80	1.60	3.94 ± 11.0% (k=2)

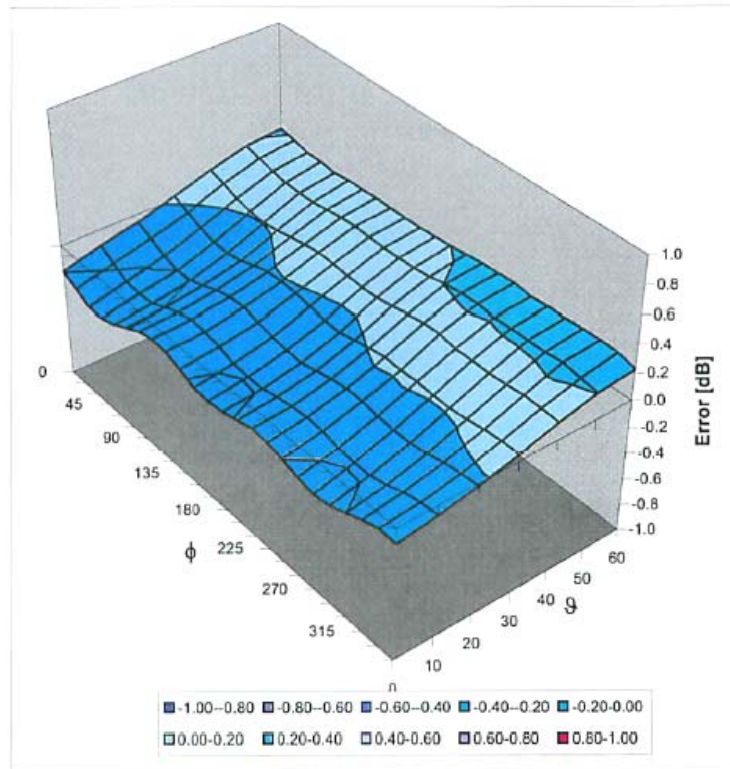
<sup>c</sup> The validity of ± 100 MHz only applies for DASY v4.4 and higher (see Page 2). The uncertainty is the RSS of the ConvF uncertainty at calibration frequency and the uncertainty for the indicated frequency band.

ET3DV6 SN:1604

September 23, 2008

### Deviation from Isotropy in HSL

Error ( $\phi$ ,  $\theta$ ),  $f = 900$  MHz



Uncertainty of Spherical Isotropy Assessment:  $\pm 2.6\%$  ( $k=2$ )



# APPENDIX C – DIPOLE CALIBRATION CERTIFICATES

**Calibration Laboratory of  
Schmid & Partner  
Engineering AG**  
Zeughausstrasse 43, 8004 Zurich, Switzerland



**S** Schweizerischer Kalibrierdienst  
**C** Service suisse d'étalonnage  
**S** Servizio svizzero di taratura  
**S** Swiss Calibration Service

Accredited by the Swiss Federal Office of Metrology and Accreditation  
The Swiss Accreditation Service is one of the signatories to the EA  
Multilateral Agreement for the recognition of calibration certificates

Accreditation No.: **3C3 108**

Client **BACL**

Certificate No: **D900V2-122\_Nov07**

CALIBRATION CERTIFICATE																																															
Object	D900V2 - SN: 122																																														
Calibration procedure(s)	QA CAL-05.v7 Calibration procedure for dipole validation kits																																														
Calibration date:	November 07, 2007																																														
Condition of the calibrated item	In Tolerance																																														
<p>This calibration certificate documents the traceability to national standards, which realize the physical units of measurements (SI). The measurements and the uncertainties with confidence probability are given on the following pages and are part of the certificate.</p> <p>All calibrations have been conducted in the closed laboratory facility: environment temperature (22 ± 3)°C and humidity &lt; 70%.</p> <p>Calibration Equipment used (M&amp;TE critical for calibration)</p> <table border="1"> <thead> <tr> <th>Primary Standards</th> <th>ID #</th> <th>Cal Date (Calibrated by, Certificate No.)</th> <th>Scheduled Calibration</th> </tr> </thead> <tbody> <tr> <td>Power meter EPM-442A</td> <td>GB37480704</td> <td>04-Oct-07 (METAS, No. 217-00736)</td> <td>Oct-08</td> </tr> <tr> <td>Power sensor HP 8481A</td> <td>US37292783</td> <td>04-Oct-07 (METAS, No. 217-00736)</td> <td>Oct-08</td> </tr> <tr> <td>Reference 20 dB Attenuator</td> <td>SN: 5066 (20g)</td> <td>07-Aug-07 (METAS, No 217-00718)</td> <td>Aug-08</td> </tr> <tr> <td>Reference 10 dB Attenuator</td> <td>SN: 5047.2 (10g)</td> <td>07-Aug-07 (METAS, No 217-00718)</td> <td>Aug-08</td> </tr> <tr> <td>Reference Probe ET3DV6 (HF)</td> <td>SN 1507</td> <td>26-Oct-07 (SPEAG, No. ET3-1507_Oct07)</td> <td>Oct-08</td> </tr> <tr> <td>DAE4</td> <td>SN 601</td> <td>30-Jan-07 (SPEAG, No. DAE4-601_Jan07)</td> <td>Jan-08</td> </tr> </tbody> </table> <table border="1"> <thead> <tr> <th>Secondary Standards</th> <th>ID #</th> <th>Check Date (in house)</th> <th>Scheduled Check</th> </tr> </thead> <tbody> <tr> <td>Power sensor HP 8481A</td> <td>MY41092317</td> <td>18-Oct-02 (SPEAG, in house check Oct-07)</td> <td>In house check: Oct-09</td> </tr> <tr> <td>RF generator R&amp;S SMT-06</td> <td>100005</td> <td>4-Aug-99 (SPEAG, in house check Oct-07)</td> <td>In house check: Oct-09</td> </tr> <tr> <td>Network Analyzer HP 8753E</td> <td>US37390585 S4206</td> <td>18-Oct-01 (SPEAG, in house check Oct-07)</td> <td>In house check: Oct-08</td> </tr> </tbody> </table>				Primary Standards	ID #	Cal Date (Calibrated by, Certificate No.)	Scheduled Calibration	Power meter EPM-442A	GB37480704	04-Oct-07 (METAS, No. 217-00736)	Oct-08	Power sensor HP 8481A	US37292783	04-Oct-07 (METAS, No. 217-00736)	Oct-08	Reference 20 dB Attenuator	SN: 5066 (20g)	07-Aug-07 (METAS, No 217-00718)	Aug-08	Reference 10 dB Attenuator	SN: 5047.2 (10g)	07-Aug-07 (METAS, No 217-00718)	Aug-08	Reference Probe ET3DV6 (HF)	SN 1507	26-Oct-07 (SPEAG, No. ET3-1507_Oct07)	Oct-08	DAE4	SN 601	30-Jan-07 (SPEAG, No. DAE4-601_Jan07)	Jan-08	Secondary Standards	ID #	Check Date (in house)	Scheduled Check	Power sensor HP 8481A	MY41092317	18-Oct-02 (SPEAG, in house check Oct-07)	In house check: Oct-09	RF generator R&S SMT-06	100005	4-Aug-99 (SPEAG, in house check Oct-07)	In house check: Oct-09	Network Analyzer HP 8753E	US37390585 S4206	18-Oct-01 (SPEAG, in house check Oct-07)	In house check: Oct-08
Primary Standards	ID #	Cal Date (Calibrated by, Certificate No.)	Scheduled Calibration																																												
Power meter EPM-442A	GB37480704	04-Oct-07 (METAS, No. 217-00736)	Oct-08																																												
Power sensor HP 8481A	US37292783	04-Oct-07 (METAS, No. 217-00736)	Oct-08																																												
Reference 20 dB Attenuator	SN: 5066 (20g)	07-Aug-07 (METAS, No 217-00718)	Aug-08																																												
Reference 10 dB Attenuator	SN: 5047.2 (10g)	07-Aug-07 (METAS, No 217-00718)	Aug-08																																												
Reference Probe ET3DV6 (HF)	SN 1507	26-Oct-07 (SPEAG, No. ET3-1507_Oct07)	Oct-08																																												
DAE4	SN 601	30-Jan-07 (SPEAG, No. DAE4-601_Jan07)	Jan-08																																												
Secondary Standards	ID #	Check Date (in house)	Scheduled Check																																												
Power sensor HP 8481A	MY41092317	18-Oct-02 (SPEAG, in house check Oct-07)	In house check: Oct-09																																												
RF generator R&S SMT-06	100005	4-Aug-99 (SPEAG, in house check Oct-07)	In house check: Oct-09																																												
Network Analyzer HP 8753E	US37390585 S4206	18-Oct-01 (SPEAG, in house check Oct-07)	In house check: Oct-08																																												
Calibrated by:	Name Marcel Fehr	Function Laboratory Technician	Signature 																																												
Approved by:	Name Katja Pokovic	Function Technical Manager	Signature 																																												
			Issued: November 14, 2007																																												
This calibration certificate shall not be reproduced except in full without written approval of the laboratory.																																															

Calibration Laboratory of  
Schmid & Partner  
Engineering AG  
Zeughausstrasse 43, 8004 Zurich, Switzerland



S Schweizerischer Kalibrierdienst  
C Service suisse d'étalonnage  
S Servizio svizzero di taratura  
S Swiss Calibration Service

Accredited by the Swiss Federal Office of Metrology and Accreditation  
The Swiss Accreditation Service is one of the signatories to the EA  
Multilateral Agreement for the recognition of calibration certificates

Accreditation No.: **SCS 108**

**Glossary:**

TSL tissue simulating liquid  
ConvF sensitivity in TSL / NORM x,y,z  
N/A not applicable or not measured

*Handwritten signature and date: 11/20/2007*

**Calibration is Performed According to the Following Standards:**

- a) IEEE Std 1528-2003, "IEEE Recommended Practice for Determining the Peak Spatial-Averaged Specific Absorption Rate (SAR) in the Human Head from Wireless Communications Devices: Measurement Techniques", December 2003
- b) IEC 62209-1, "Procedure to measure the Specific Absorption Rate (SAR) for hand-held devices used in close proximity to the ear (frequency range of 300 MHz to 3 GHz)", February 2005
- c) Federal Communications Commission Office of Engineering & Technology (FCC OET), "Evaluating Compliance with FCC Guidelines for Human Exposure to Radiofrequency Electromagnetic Fields; Additional Information for Evaluating Compliance of Mobile and Portable Devices with FCC Limits for Human Exposure to Radiofrequency Emissions", Supplement C (Edition 01-01) to Bulletin 65

**Additional Documentation:**

- d) DASY4 System Handbook

**Methods Applied and Interpretation of Parameters:**

- *Measurement Conditions:* Further details are available from the Validation Report at the end of the certificate. All figures stated in the certificate are valid at the frequency indicated.
- *Antenna Parameters with TSL:* The dipole is mounted with the spacer to position its feed point exactly below the center marking of the flat phantom section, with the arms oriented parallel to the body axis.
- *Feed Point Impedance and Return Loss:* These parameters are measured with the dipole positioned under the liquid filled phantom. The impedance stated is transformed from the measurement at the SMA connector to the feed point. The Return Loss ensures low reflected power. No uncertainty required.
- *Electrical Delay:* One-way delay between the SMA connector and the antenna feed point. No uncertainty required.
- *SAR measured:* SAR measured at the stated antenna input power.
- *SAR normalized:* SAR as measured, normalized to an input power of 1 W at the antenna connector.
- *SAR for nominal TSL parameters:* The measured TSL parameters are used to calculate the nominal SAR result.

### Measurement Conditions

DASY system configuration, as far as not given on page 1.

DASY Version	DASY4	V4.7
Extrapolation	Advanced Extrapolation	
Phantom	Modular Flat Phantom V4.9	
Distance Dipole Center - TSL	15 mm	with Spacer
Zoom Scan Resolution	dx, dy, dz = 5 mm	
Frequency	900 MHz $\pm$ 1 MHz	

### Head TSL parameters

The following parameters and calculations were applied.

	Temperature	Permittivity	Conductivity
Nominal Head TSL parameters	22.0 °C	41.5	0.97 mho/m
Measured Head TSL parameters	(22.0 $\pm$ 0.2) °C	39.5 $\pm$ 6 %	0.94 mho/m $\pm$ 6 %
Head TSL temperature during test	(21.3 $\pm$ 0.2) °C	—	—

### SAR result with Head TSL

SAR averaged over 1 cm <sup>3</sup> (1 g) of Head TSL	Condition	
SAR measured	250 mW input power	2.74 mW / g
SAR normalized	normalized to 1W	11.0 mW / g
SAR for nominal Head TSL parameters <sup>1</sup>	normalized to 1W	10.9 mW / g $\pm$ 17.0 % (k=2)

SAR averaged over 10 cm <sup>3</sup> (10 g) of Head TSL	condition	
SAR measured	250 mW input power	1.76 mW / g
SAR normalized	normalized to 1W	7.04 mW / g
SAR for nominal Head TSL parameters <sup>1</sup>	normalized to 1W	6.96 mW / g $\pm$ 16.5 % (k=2)

<sup>1</sup> Correction to nominal TSL parameters according to d), chapter "SAR Sensitivities"

**Appendix****Antenna Parameters with Head TSL**

Impedance, transformed to feed point	50.4 $\Omega$ - 7.0 $j\Omega$
Return Loss	- 23.1 dB

**General Antenna Parameters and Design**

Electrical Delay (one direction)	1.411 ns
----------------------------------	----------

After long term use with 100W radiated power, only a slight warming of the dipole near the feedpoint can be measured.

The dipole is made of standard semirigid coaxial cable. The center conductor of the feeding line is directly connected to the second arm of the dipole. The antenna is therefore short-circuited for DC-signals.

No excessive force must be applied to the dipole arms, because they might bend or the soldered connections near the feedpoint may be damaged.

**Additional EUT Data**

Manufactured by	SPEAG
Manufactured on	July 04, 2001

**DASY4 Validation Report for Head TSL**

Date/Time: 07.11.2007 15:30:39

Test Laboratory: SPEAG, Zurich, Switzerland

**DUT: Dipole 900 MHz; Type: D900V2; Serial: D900V2 - SN:122**

Communication System: CW; Frequency: 900 MHz; Duty Cycle: 1:1

Medium: HSL 900 MHz;

Medium parameters used:  $f = 900 \text{ MHz}$ ;  $\sigma = 0.939 \text{ mho/m}$ ;  $\epsilon_r = 39.4$ ;  $\rho = 1000 \text{ kg/m}^3$

Phantom section: Flat Section

Measurement Standard: DASY4 (High Precision Assessment)

**DASY4 Configuration:**

- Probe: ET3DV6 - SN1507 (HF); ConvF(5.93, 5.93, 5.93); Calibrated: 26.10.2007
- Sensor-Surface: 4mm (Mechanical Surface Detection)
- Electronics: DAE4 Sn601; Calibrated: 30.01.2007
- Phantom: Flat Phantom 4.9L; Type: QD000P49AA; ;
- Measurement SW: DASY4, V4.7 Build 55; Postprocessing SW: SEMCAD, V1.8 Build 172

**Pin = 250 mW; d = 15 mm/Zoom Scan (7x7x7)/Cube 0:**

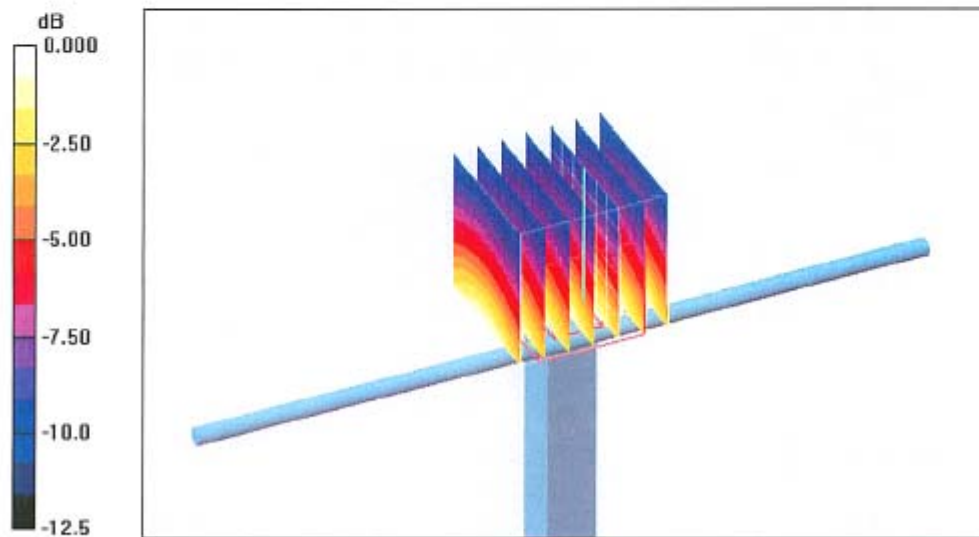
Measurement grid:  $dx=5\text{mm}$ ,  $dy=5\text{mm}$ ,  $dz=5\text{mm}$

Reference Value = 58.1 V/m; Power Drift = 0.035 dB

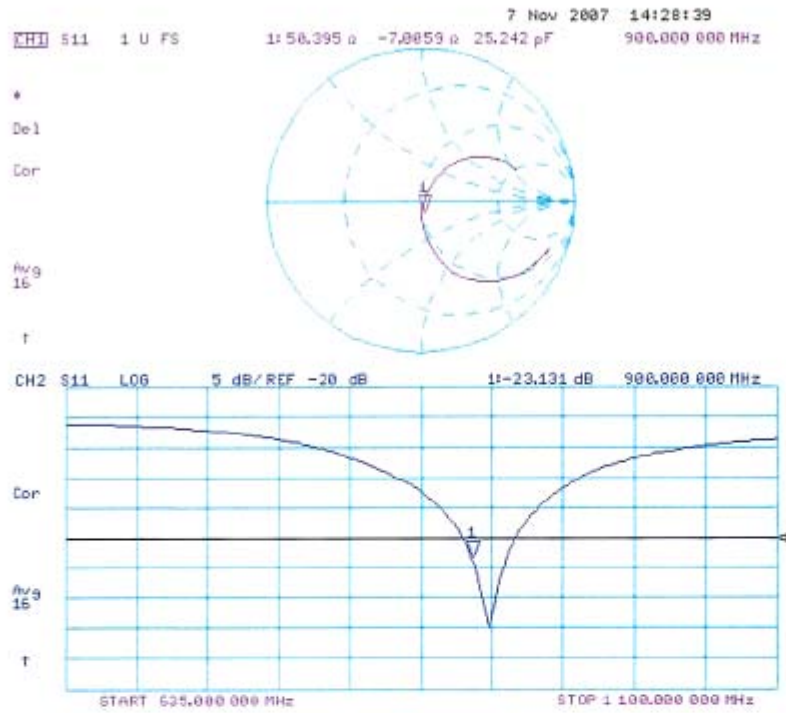
Peak SAR (extrapolated) = 4.08 W/kg

**SAR(1 g) = 2.74 mW/g; SAR(10 g) = 1.76 mW/g**

Maximum value of SAR (measured) = 2.95 mW/g



### Impedance Measurement Plot for Head TSL





### NCL CALIBRATION LABORATORIES

Calibration File No: DC-920  
Project Number: BACL-ALSAS10U-5323

## CERTIFICATE OF CALIBRATION

It is certified that the equipment identified below has been calibrated in the **NCL CALIBRATION LABORATORIES** by qualified personnel following recognized procedures and using transfer standards traceable to NRC/NIST.

Validation Dipole

Manufacturer: APREL Laboratories  
Part number: ALS-D-1900-S-2  
Frequency: 1900 MHz  
Serial No: 210-00710

Customer: Bay Area Compliance Laboratory

Calibrated: 1<sup>st</sup> September 2008  
Released on: 1<sup>st</sup> September 2008

This Calibration Certificate is incomplete unless accompanied with the Calibration Results Summary

Released By: \_\_\_\_\_

### **NCL** CALIBRATION LABORATORIES

51 SPECTRUM WAY  
NEPEAN, ONTARIO  
CANADA K2R 1E5

Division of APREL Lab.  
TEL: (613) 820-4988  
FAX: (613) 820-4162

**NCL Calibration Laboratories**

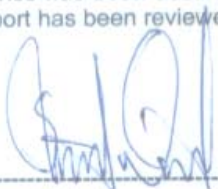
Division of APREL Laboratories.

**Conditions**

Dipole 210-00710 was new and taken from stock prior to calibration.

**Ambient Temperature of the Laboratory:** 22 °C +/- 0.5°C  
**Temperature of the Tissue:** 21 °C +/- 0.5°C

We the undersigned attest that to the best of our knowledge the calibration of this device has been accurately conducted and that all information contained within this report has been reviewed for accuracy.



-----  
**Stuart Nicol**



-----  
**C. Teodorian**

This page has been reviewed for content and attested to by signature within this document.



**NCL Calibration Laboratories**

Division of APREL Laboratories.

**Calibration Results Summary**

The following results relate the Calibrated Dipole and should be used as a quick reference for the user.

**Mechanical Dimensions**

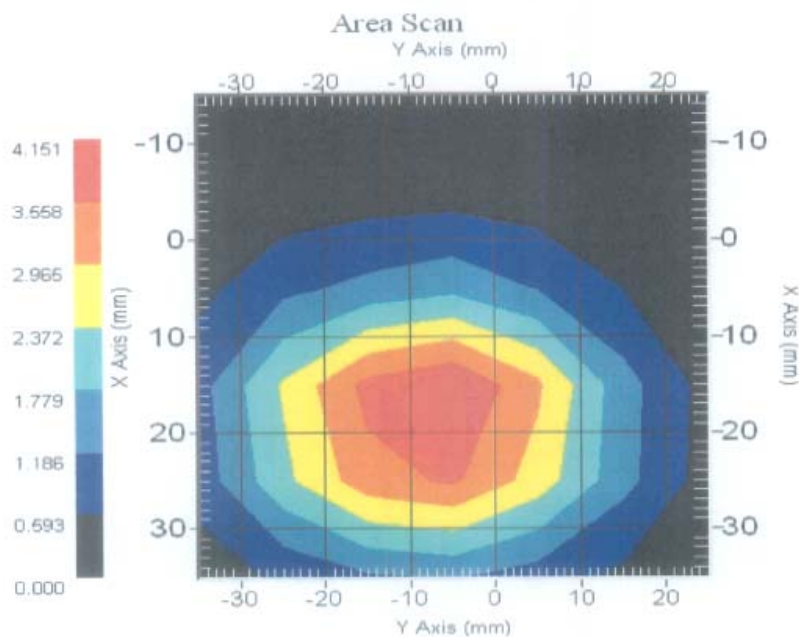
**Length:** 67.1 mm  
**Height:** 38.9 mm

**Electrical Specification**

**SWR:** 1.059 U  
**Return Loss:** -30.831 dB  
**Impedance:** 50.914  $\Omega$

**System Validation Results**

Frequency	1 Gram	10 Gram	Peak
1900 MHz	38.7	20.5	69.7



This page has been reviewed for content and attested to by signature within this document.

**NCL Calibration Laboratories**

Division of APREL Laboratories.

**Introduction**

This Calibration Report has been produced in line with the SSI Dipole Calibration Procedure SSI-TP-018-ALSAS. The results contained within this report are for Validation Dipole 210-00710. The calibration routine consisted of a three-step process. Step 1 was a mechanical verification of the dipole to ensure that it meets the mechanical specifications. Step 2 was an Electrical Calibration for the Validation Dipole, where the SWR, Impedance, and the Return loss were assessed. Step 3 involved a System Validation using the ALSAS-10U, along with APREL E-020 130 MHz to 26 GHz E-Field Probe Serial Number 212.

**References**

- SSI-TP-018-ALSAS Dipole Calibration Procedure
- SSI-TP-016 Tissue Calibration Procedure
- IEEE 1528 "Recommended Practice for Determining the Peak Spatial-Average Specific Absorption Rate (SAR) in the Human Body Due to Wireless Communications Devices: Experimental Techniques"

**Conditions**

Dipole 210-00710 was new taken from stock.

**Ambient Temperature of the Laboratory:** 22 °C +/- 0.5°C  
**Temperature of the Tissue:** 20 °C +/- 0.5°C

This page has been reviewed for content and attested to by signature within this document.

**NCL Calibration Laboratories**

Division of APREL Laboratories.

**Dipole Calibration Results****Mechanical Verification**

APREL Length	APREL Height	Measured Length	Measured Height
68.0 mm	39.5 mm	67.1mm	38.9 mm

**Tissue Validation**

Head Tissue 1900 MHz	Measured
Dielectric constant, $\epsilon_r$	40.03
Conductivity, $\sigma$ [S/m]	1.38

This page has been reviewed for content and attested to by signature within this document.

5

**NCL Calibration Laboratories**

Division of APREL Laboratories.

**Electrical Calibration**

Test	Result
S11 R/L	-30.831 dB
SWR	1.059 U
Impedance	50.914 $\Omega$

The Following Graphs are the results as displayed on the Vector Network Analyzer.

**S11 Parameter Return Loss**



This page has been reviewed for content and attested to by signature within this document.

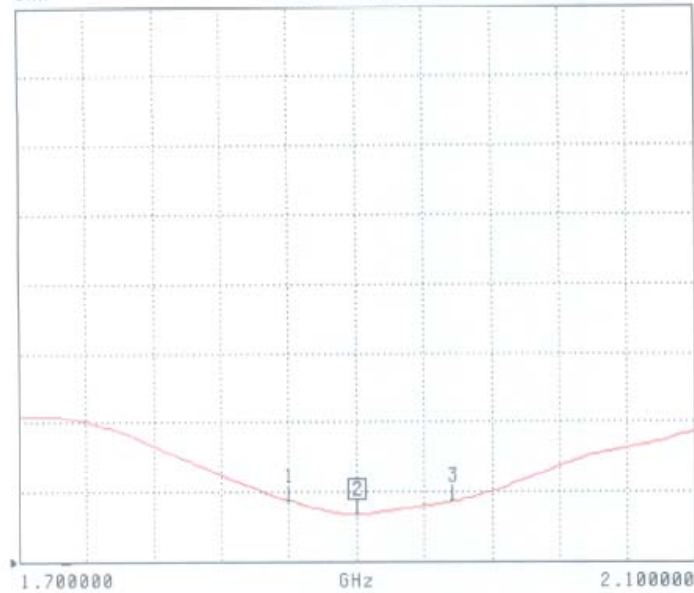
**NCL Calibration Laboratories**

Division of APREL Laboratories.

**SWR**

S11 FORWARD REFLECTION

SWR      ▶ REF = 449.865 mU      900.000 mU/DIV



CH 1 - S11  
REFERENCE PLANE  
5.1000 mm

MARKER 2  
1.900000 GHz  
1.059 U

MARKER TO MAX  
MARKER TO MIN

**1** 1.860000 GHz  
1.241 U

**3** 1.957500 GHz  
1.229 U

▶ MARKER READOUT  
FUNCTIONS

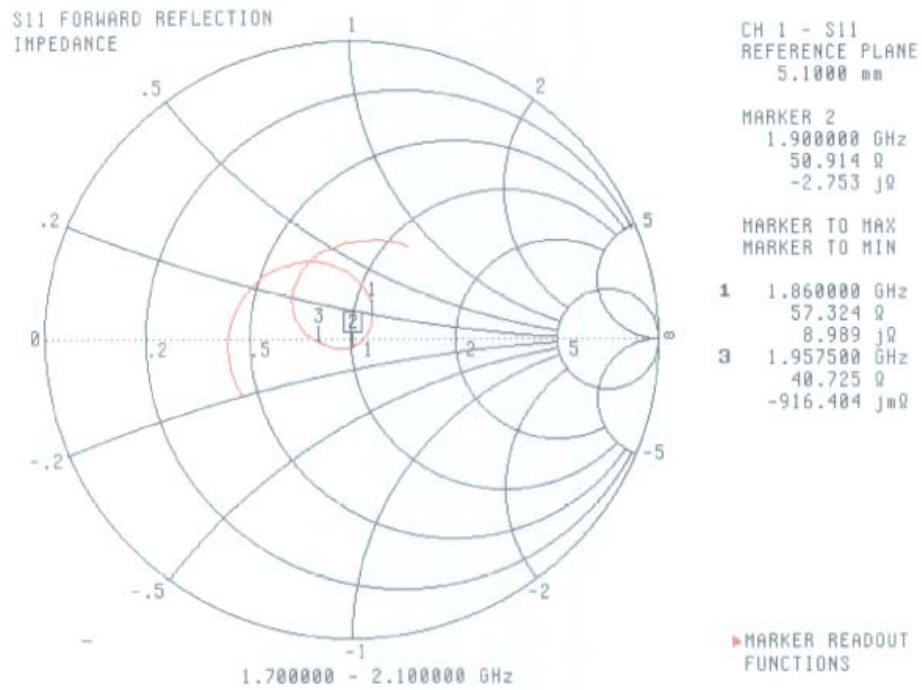
This page has been reviewed for content and attested to by signature within this document.

7

**NCL Calibration Laboratories**

Division of APREL Laboratories.

**Smith Chart Dipole Impedance**



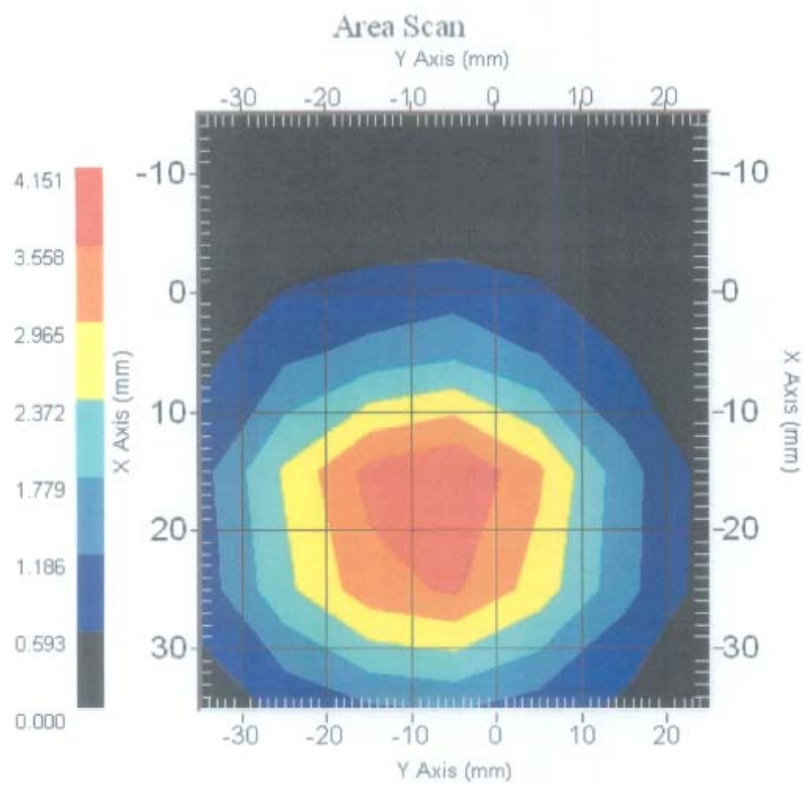
This page has been reviewed for content and attested to by signature within this document.

**NCL Calibration Laboratories**

Division of APREL Laboratories.

**System Validation Results Using the Electrically Calibrated Dipole**

Head Tissue Frequency	1 Gram	10 Gram	Peak Above Feed Point
1900 MHz	38.7	20.5	69.7



This page has been reviewed for content and attested to by signature within this document.

**NCL Calibration Laboratories**

Division of APREL Laboratories.

**Test Equipment**

The test equipment used during Probe Calibration, manufacturer, model number and, current calibration status are listed and located on the main APREL server R:\NCL\Calibration Equipment\Instrument List 2007.

This page has been reviewed for content and attested to by signature within this document.

10



## APPENDIX D - TEST SYSTEM VERIFICATIONS SCANS

### Liquid Measurement Result

Testing was performed by Jimmy Nguyen 2008-10-29

Simulant	Freq [MHz]	Parameters	Liquid Temp [°C]	Target Value	Measured Value	Deviation [%]	Limits [%]
Head	835	$\epsilon_r$	22	41.5	41.1	0.96	$\pm 5$
		$\sigma$	22	0.90	0.89	-1.11	$\pm 5$
		1g SAR	22	9.5	9.8	3.16	$\pm 10$

$\epsilon_r$  = relative permittivity,  $\sigma$  = conductivity and  $\rho=1000 \text{ kg/m}^3$

Simulant	Freq [MHz]	Parameters	Liquid Temp [°C]	Target Value	Measured Value	Deviation [%]	Limits [%]
Head	1900	$\epsilon_r$	22	40.0	39.6	-1.00	$\pm 5$
		$\sigma$	22	1.4	1.38	-1.43	$\pm 5$
		1g SAR	22	39.7	40.6	2.27	$\pm 10$

$\epsilon_r$  = relative permittivity,  $\sigma$  = conductivity and  $\rho=1000 \text{ kg/m}^3$

**Test Laboratory: Bay Area Compliance Lab Corp. (BACL)**

**System Performance Check 835 MHz Head Liquid**

**Dipole 835 MHz; Type: CD900V2; Serial: SN: 122**

Communication System: CW; Frequency: 835 MHz; Duty Cycle: 1:1  
 Medium parameters used:  $f = 835 \text{ MHz}$ ;  $\sigma = 0.89 \text{ mho/m}$ ;  $\epsilon_r = 41.1$ ;  $\rho = 1000 \text{ kg/m}^3$   
 Phantom section: Flat Section

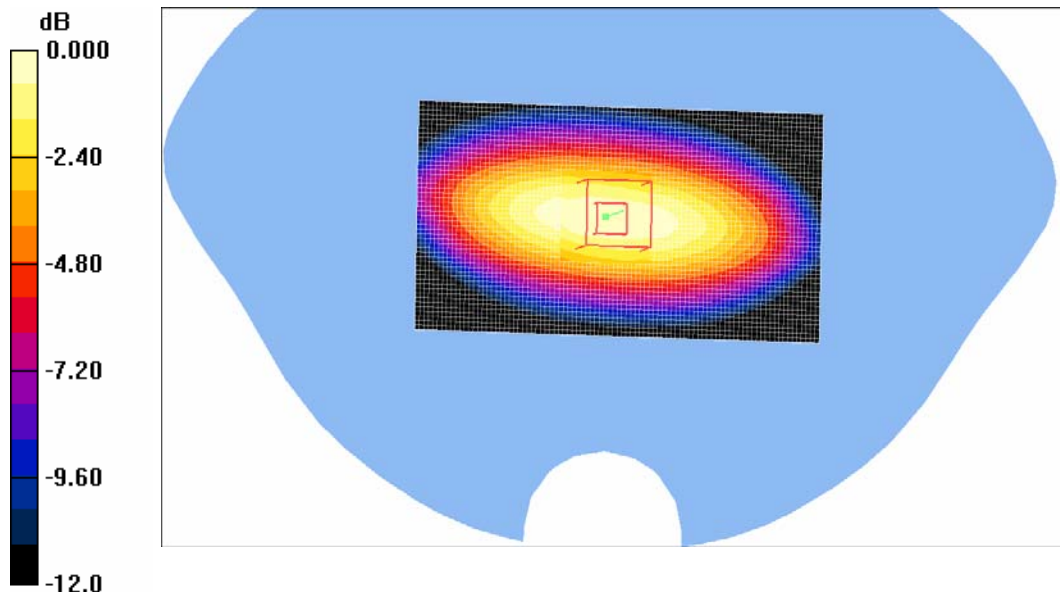
DASY4 Configuration:

- Probe: ET3DV6 - SN1604; ConvF(6.46, 6.46, 6.46); Calibrated: 9/23/2008
- Sensor-Surface: 4mm (Mechanical Surface Detection)
- Electronics: DAE3 Sn456; Calibrated: 11/8/2007
- Phantom: SAM with CRP; Type: Twin SAM; Serial: TP-1032
- Measurement SW: DASY4, V4.7 Build 71; Post processing SW: SEMCAD, V1.8 Build 184

**d =10 mm, Pin = 0.5W/Area Scan (51x91x1):** Measurement grid: dx=15mm, dy=15mm  
 Maximum value of SAR (interpolated) = 5.81 mW/g

**d =10 mm, Pin = 0.5W/Zoom Scan (7x7x7)/Cube 0:** Measurement grid: dx=5mm, dy=5mm, dz=5mm  
 Reference Value = 85.3 V/m; Power Drift = -0.089 dB  
 Peak SAR (extrapolated) = 8.10 W/kg

**SAR (1 g) = 4.9 mW/g; SAR (10 g) = 3.2 mW/g**  
 Maximum value of SAR (measured) = 5.35 mW/g



0 dB = 5.35 mW/g

**835 MHz System Validation**

**Test Laboratory: Bay Area Compliance Lab Corp. (BACL)**

**System Performance Check 1900 MHz Head Liquid**

**Dipole 1900 MHz; Type: ALS-D-1900-S-2; Serial: 210-00710**

Communication System: CW; Frequency: 1900 MHz; Duty Cycle: 1:1  
 Medium parameters used:  $f = 1900 \text{ MHz}$ ;  $\sigma = 1.38 \text{ mho/m}$ ;  $\epsilon_r = 39.6$ ;  $\rho = 1000 \text{ kg/m}^3$   
 Phantom section: Flat Section

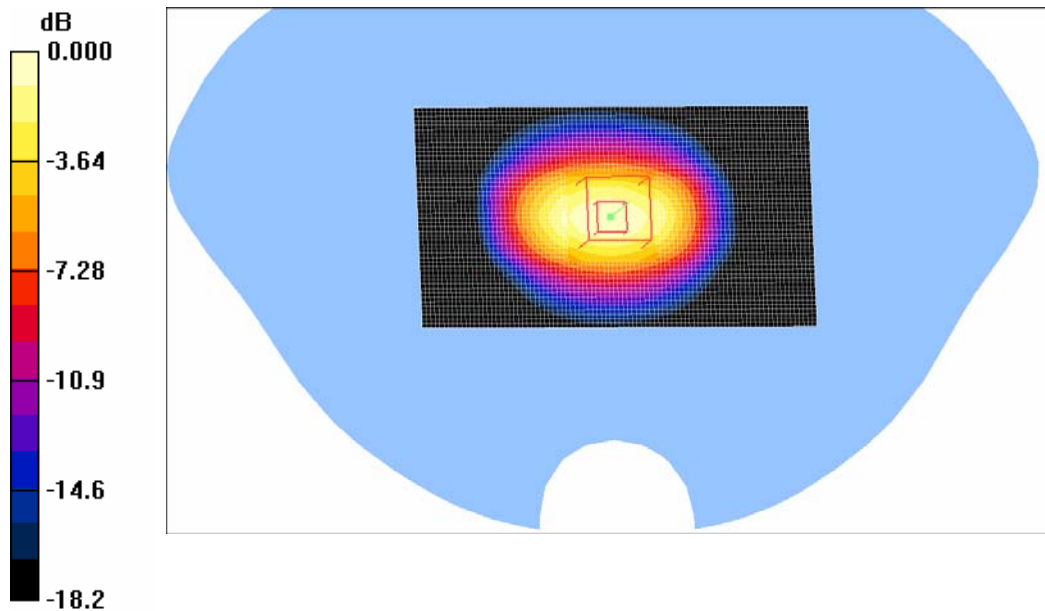
DASY4 Configuration:

- Probe: ET3DV6 - SN1604; ConvF(5.18, 5.18, 5.18); Calibrated: 9/23/2008
- Sensor-Surface: 4mm (Mechanical Surface Detection)
- Electronics: DAE3 Sn456; Calibrated: 11/8/2007
- Phantom: SAM with CRP; Type: Twin SAM; Serial: TP-1032
- Measurement SW: DASY4, V4.7 Build 71; Post processing SW: SEMCAD, V1.8 Build 184

**d = 10 mm, Pin = 0.5W/Area Scan (51x91x1):** Measurement grid: dx=15mm, dy=15mm  
 Maximum value of SAR (interpolated) = 25.5 mW/g

**d = 10 mm, Pin = 0.5W/Zoom Scan (7x7x7)/Cube 0:** Measurement grid: dx=5mm, dy=5mm, dz=5mm  
 Reference Value = 133.1 V/m; Power Drift = 0.047 dB  
 Peak SAR (extrapolated) = 39.6 W/kg

**SAR (1 g) = 20.3 mW/g; SAR (10 g) = 10.6 mW/g**  
 Maximum value of SAR (measured) = 21.9 mW/g



0 dB = 21.9 mW/g

**1900 MHz System Validation**

## APPENDIX E - EUT SCAN RESULTS

**Test Laboratory: Bay Area Compliance Lab Corp. (BACL)**

**Right Head Touch (Middle Channel)**

**Beyond E-Tech D620; Type: GSM 850/1900 Dual Band Mobile Phone; Serial: B2007**

Communication System: GSM850; Frequency: 836.6 MHz; Duty Cycle: 1:8.3  
Medium parameters used:  $f = 836.6$  MHz;  $\sigma = 0.91$  mho/m;  $\epsilon_r = 41.8$ ;  $\rho = 1000$  kg/m<sup>3</sup>  
Phantom section: Right Section

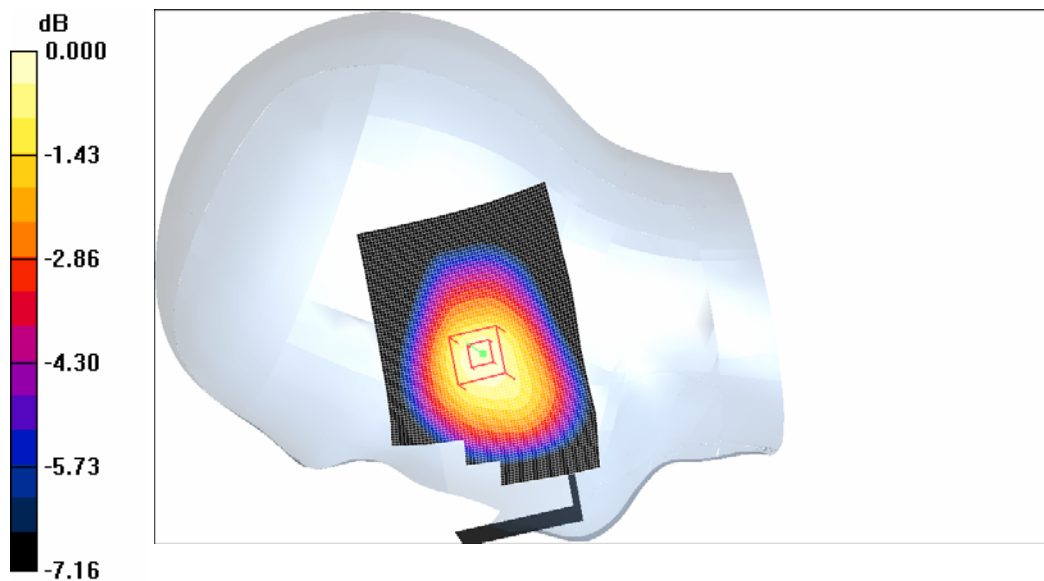
DASY4 Configuration:

- Probe: ET3DV6 - SN1604; ConvF(6.46, 6.46, 6.46); Calibrated: 9/23/2008
- Sensor-Surface: 4mm (Mechanical Surface Detection)
- Electronics: DAE3 Sn456; Calibrated: 11/8/2007
- Phantom: SAM with CRP; Type: Twin SAM; Serial: TP-1032
- Measurement SW: DASY4, V4.7 Build 71; Post processing SW: SEMCAD, V1.8 Build 184

**Right Head Touch/Area Scan (61x91x1):** Measurement grid: dx=15mm, dy=15mm  
Maximum value of SAR (interpolated) = 0.371 mW/g

**Right Head Touch/Zoom Scan (7x7x7)/Cube 0:** Measurement grid: dx=5mm, dy=5mm, dz=5mm  
Reference Value = 12.4 V/m; Power Drift = -0.091 dB  
Peak SAR (extrapolated) = 0.395 W/kg

**SAR (1 g) = 0.352 mW/g; SAR (10 g) = 0.290 mW/g**  
Maximum value of SAR (measured) = 0.369 mW/g



0 dB = 0.369 mW/g

**Plot # 1**

**Test Laboratory: Bay Area Compliance Lab Corp. (BACL)**

**Right Head Tilt (Middle Channel)**

**Beyond E-Tech D620; Type: GSM 850/1900 Dual Band Mobile Phone; Serial: B2007**

Communication System: GSM850; Frequency: 836.6 MHz; Duty Cycle: 1:8.3  
Medium parameters used:  $f = 836.6 \text{ MHz}$ ;  $\sigma = 0.91 \text{ mho/m}$ ;  $\epsilon_r = 41.8$ ;  $\rho = 1000 \text{ kg/m}^3$   
Phantom section: Right Section

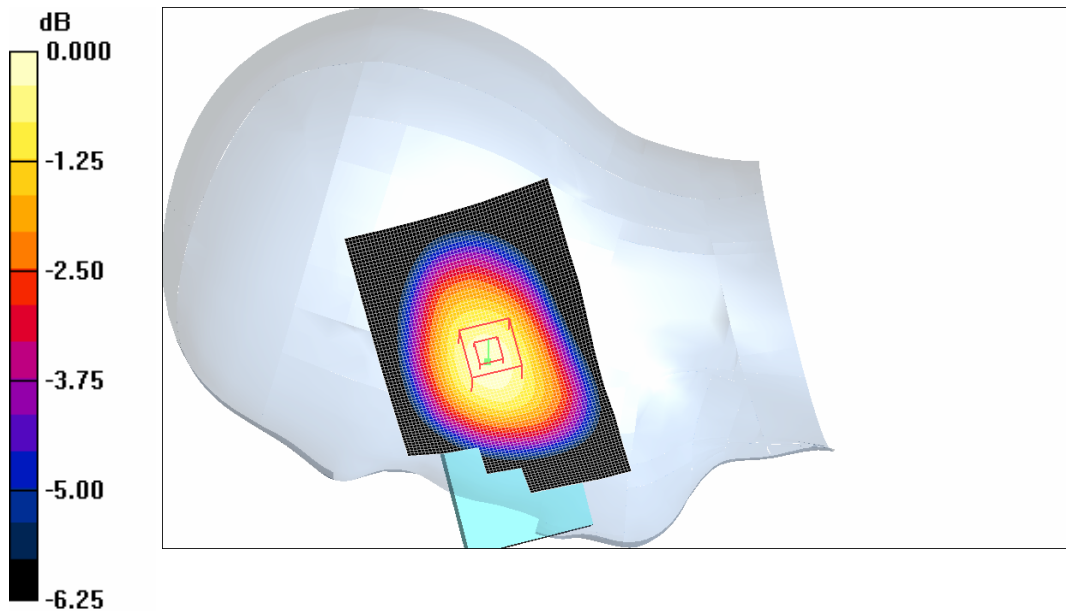
DASY4 Configuration:

- Probe: ET3DV6 - SN1604; ConvF(6.46, 6.46, 6.46); Calibrated: 9/23/2008
- Sensor-Surface: 4mm (Mechanical Surface Detection)
- Electronics: DAE3 Sn456; Calibrated: 11/8/2007
- Phantom: SAM with CRP; Type: Twin SAM; Serial: TP-1032
- Measurement SW: DASY4, V4.7 Build 71; Post processing SW: SEMCAD, V1.8 Build 184

**Right Head Tilt/Area Scan (61x91x1):** Measurement grid:  $dx=15\text{mm}$ ,  $dy=15\text{mm}$   
Maximum value of SAR (interpolated) = 0.286 mW/g

**Right Head Tilt/Zoom Scan (7x7x7)/Cube 0:** Measurement grid:  $dx=5\text{mm}$ ,  $dy=5\text{mm}$ ,  $dz=5\text{mm}$   
Reference Value = 13.4 V/m; Power Drift = 0.138 dB  
Peak SAR (extrapolated) = 0.302 W/kg

**SAR (1 g) = 0.279 mW/g; SAR (10 g) = 0.234 mW/g**  
Maximum value of SAR (measured) = 0.290 mW/g



0 dB = 0.290 mW/g

**Plot # 2**

**Test Laboratory: Bay Area Compliance Lab Corp. (BACL)**

**Left Head Touch (Middle Channel)**

**Beyond E-Tech D620; Type: GSM 850/1900 Dual Band Mobile Phone; Serial: B2007**

Communication System: GSM850; Frequency: 836.6 MHz; Duty Cycle: 1:8.3  
Medium parameters used:  $f = 836.6 \text{ MHz}$ ;  $\sigma = 0.91 \text{ mho/m}$ ;  $\epsilon_r = 41.8$ ;  $\rho = 1000 \text{ kg/m}^3$   
Phantom section: Left Section

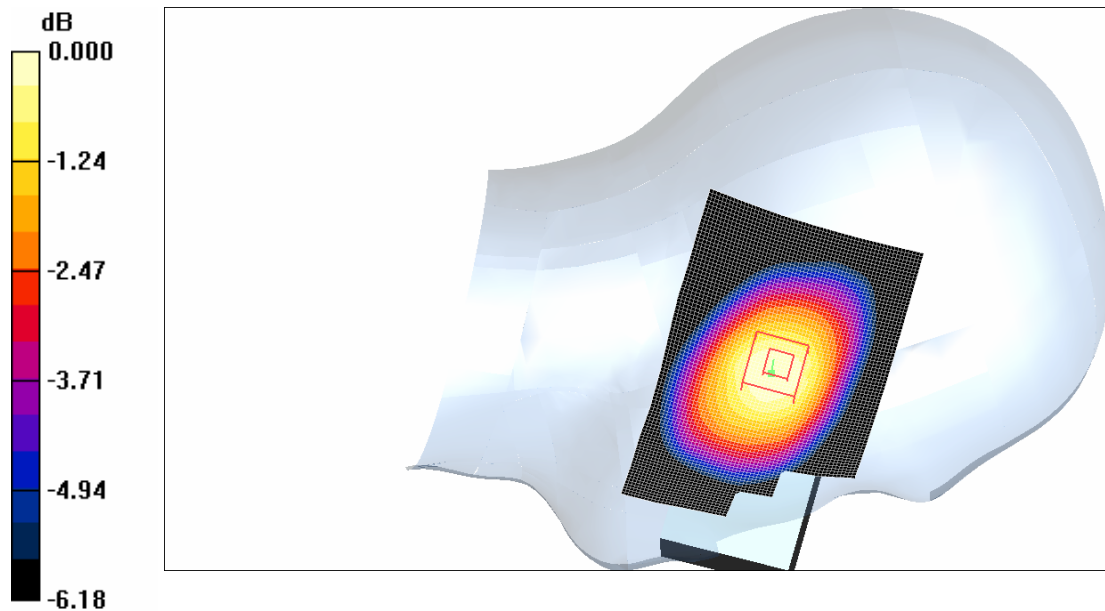
DASY4 Configuration:

- Probe: ET3DV6 - SN1604; ConvF(6.46, 6.46, 6.46); Calibrated: 9/23/2008
- Sensor-Surface: 4mm (Mechanical Surface Detection)
- Electronics: DAE3 Sn456; Calibrated: 11/8/2007
- Phantom: SAM with CRP; Type: Twin SAM; Serial: TP-1032
- Measurement SW: DASY4, V4.7 Build 71; Post processing SW: SEMCAD, V1.8 Build 184

**Left Head Touch/Area Scan (61x91x1):** Measurement grid:  $dx=15\text{mm}$ ,  $dy=15\text{mm}$   
Maximum value of SAR (interpolated) = 0.384 mW/g

**Left Head Touch/Zoom Scan (7x7x7)/Cube 0:** Measurement grid:  $dx=5\text{mm}$ ,  $dy=5\text{mm}$ ,  $dz=5\text{mm}$   
Reference Value = 14.2 V/m; Power Drift = -0.197 dB  
Peak SAR (extrapolated) = 0.396 W/kg

**SAR (1 g) = 0.360 mW/g; SAR (10 g) = 0.295 mW/g**  
Maximum value of SAR (measured) = 0.376 mW/g



0 dB = 0.376 mW/g

**Plot # 3**

**Test Laboratory: Bay Area Compliance Lab Corp. (BACL)**

**Left Head Tilt (Middle Channel)**

**Beyond E-Tech D620; Type: GSM 850/1900 Dual Band Mobile Phone; Serial: B2007**

Communication System: GSM850; Frequency: 836.6 MHz; Duty Cycle: 1:8.3  
Medium parameters used:  $f = 836.6$  MHz;  $\sigma = 0.91$  mho/m;  $\epsilon_r = 41.8$ ;  $\rho = 1000$  kg/m<sup>3</sup>  
Phantom section: Left Section

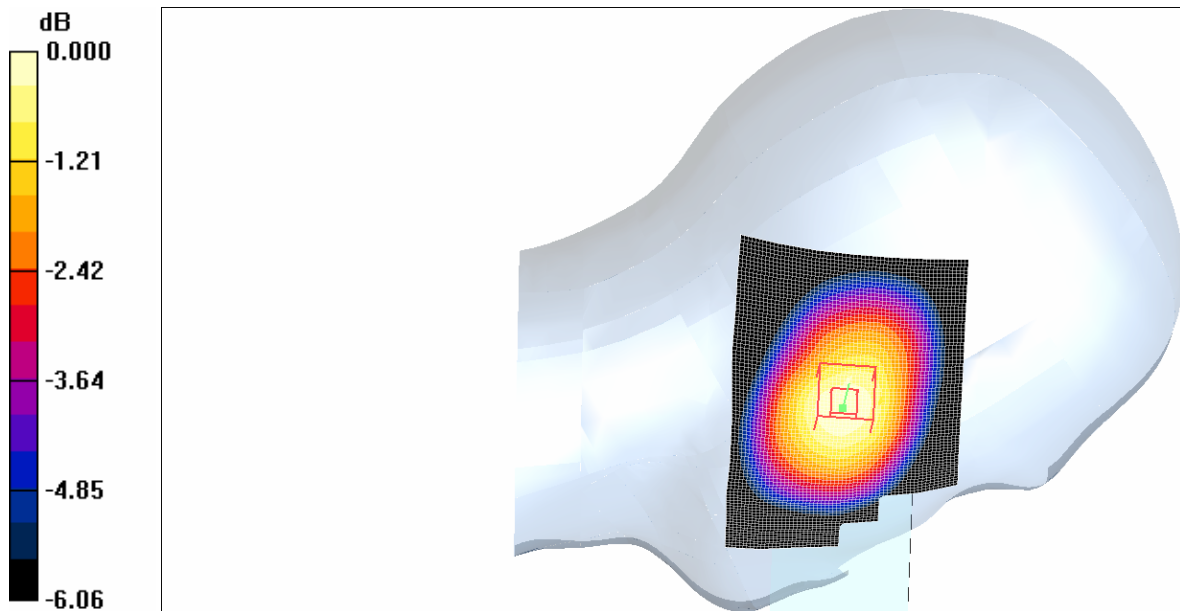
DASY4 Configuration:

- Probe: ET3DV6 - SN1604; ConvF(6.46, 6.46, 6.46); Calibrated: 9/23/2008
- Sensor-Surface: 4mm (Mechanical Surface Detection)
- Electronics: DAE3 Sn456; Calibrated: 11/8/2007
- Phantom: SAM with CRP; Type: Twin SAM; Serial: TP-1032
- Measurement SW: DASY4, V4.7 Build 71; Post processing SW: SEMCAD, V1.8 Build 184

**Left Head Tilt/Area Scan (61x91x1):** Measurement grid: dx=15mm, dy=15mm  
Maximum value of SAR (interpolated) = 0.303 mW/g

**Left Head Tilt/Zoom Scan (7x7x7)/Cube 0:** Measurement grid: dx=5mm, dy=5mm, dz=5mm  
Reference Value = 14.1 V/m; Power Drift = 0.093 dB  
Peak SAR (extrapolated) = 0.317 W/kg

**SAR (1 g) = 0.293 mW/g; SAR (10 g) = 0.243 mW/g**  
Maximum value of SAR (measured) = 0.306 mW/g



0 dB = 0.306 mW/g

**Plot # 4**



**Test Laboratory: Bay Area Compliance Lab Corp. (BACL)**

**1.5 cm Separation to Flat Phantom with Headset (Middle Channel)**

**Beyond E-Tech D620; Type: GSM 850/1900 Dual Band Mobile Phone; Serial: B2007**

Communication System: GSM850; Frequency: 836.6 MHz; Duty Cycle: 1:8.3  
Medium parameters used:  $f = 836.6 \text{ MHz}$ ;  $\sigma = 0.97 \text{ mho/m}$ ;  $\epsilon_r = 56.1$ ;  $\rho = 1000 \text{ kg/m}^3$   
Phantom section: Flat Section

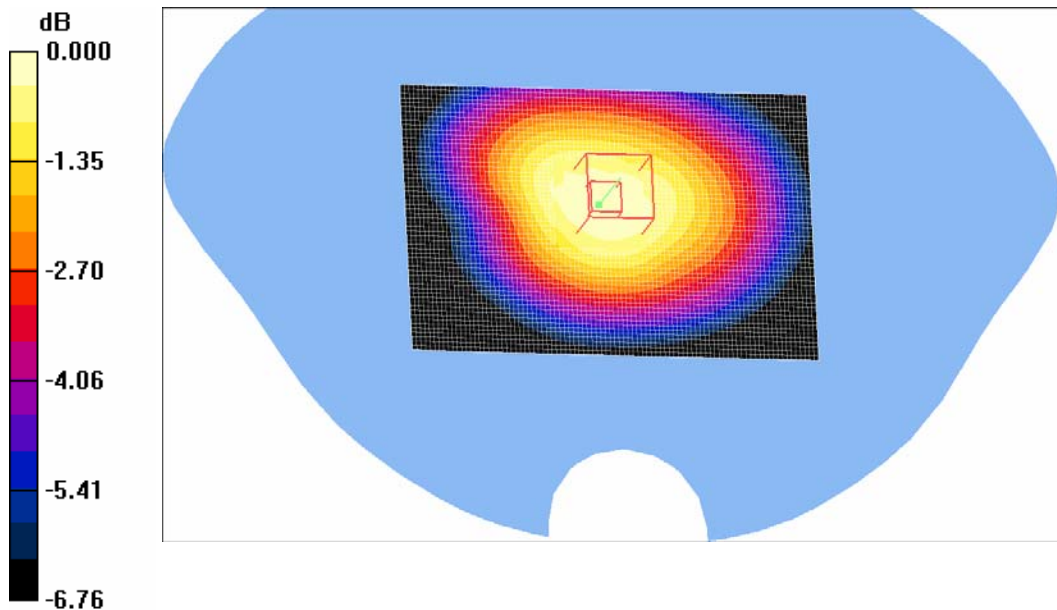
DASY4 Configuration:

- Probe: ET3DV6 - SN1604; ConvF(6.23, 6.23, 6.23); Calibrated: 9/23/2008
- Sensor-Surface: 4mm (Mechanical Surface Detection)
- Electronics: DAE3 Sn456; Calibrated: 11/8/2007
- Phantom: SAM with CRP; Type: Twin SAM; Serial: TP-1032
- Measurement SW: DASY4, V4.7 Build 71; Post processing SW: SEMCAD, V1.8 Build 184

**EUT 1.5 cm Separation to Flat Phantom with Headset/Area Scan (61x91x1):** Measurement grid:  $dx=15\text{mm}$ ,  $dy=15\text{mm}$   
Maximum value of SAR (interpolated) = 0.190 mW/g

**EUT 1.5 cm Separation to Flat Phantom with Headset/Zoom Scan (7x7x7)/Cube 0:** Measurement grid:  $dx=5\text{mm}$ ,  $dy=5\text{mm}$ ,  $dz=5\text{mm}$   
Reference Value = 15.0 V/m; Power Drift = -0.279 dB  
Peak SAR (extrapolated) = 0.206 W/kg

**SAR (1 g) = 0.184 mW/g; SAR (10 g) = 0.151 mW/g**  
Maximum value of SAR (measured) = 0.191 mW/g



0 dB = 0.191 mW/g

**Plot # 5**



**Test Laboratory: Bay Area Compliance Lab Corp. (BACL)**

**Right Head Touch (Middle Channel)**

**Beyond E-Tech D620; Type: GSM 850/1900 Dual Band Mobile Phone; Serial: B2007**

Communication System: PCS1900; Frequency: 1880 MHz; Duty Cycle: 1:8.3  
Medium parameters used:  $f = 1880$  MHz;  $\sigma = 1.45$  mho/m;  $\epsilon_r = 39.7$ ;  $\rho = 1000$  kg/m<sup>3</sup>  
Phantom section: Right Section

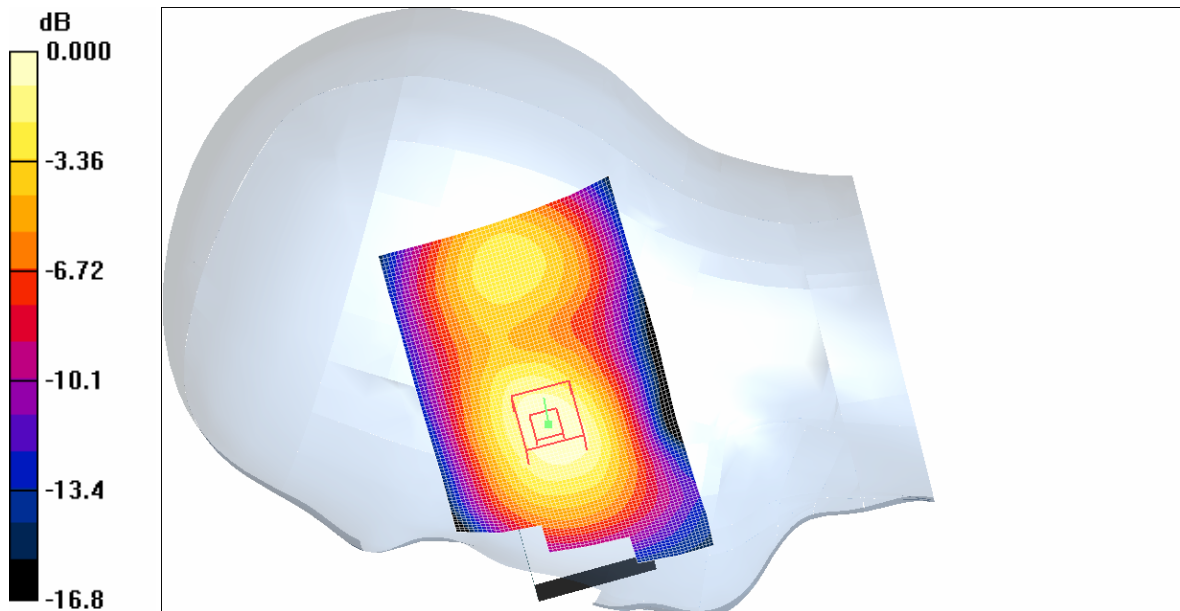
DASY4 Configuration:

- Probe: ET3DV6 - SN1604; ConvF(5.18, 5.18, 5.18); Calibrated: 9/23/2008
- Sensor-Surface: 4mm (Mechanical Surface Detection)
- Electronics: DAE3 Sn456; Calibrated: 11/8/2007
- Phantom: SAM with CRP; Type: Twin SAM; Serial: TP-1032
- Measurement SW: DASY4, V4.7 Build 71; Post processing SW: SEMCAD, V1.8 Build 184

**Right Head Touch/Area Scan (61x101x1):** Measurement grid: dx=15mm, dy=15mm  
Maximum value of SAR (interpolated) = 0.321 mW/g

**Right Head Touch/Zoom Scan (7x7x7)/Cube 0:** Measurement grid: dx=5mm, dy=5mm, dz=5mm  
Reference Value = 9.58 V/m; Power Drift = -0.071 dB  
Peak SAR (extrapolated) = 0.442 W/kg

**SAR (1 g) = 0.282 mW/g; SAR (10 g) = 0.171 mW/g**  
Maximum value of SAR (measured) = 0.307 mW/g



0 dB = 0.307 mW/g

**Plot # 6**

**Test Laboratory: Bay Area Compliance Lab Corp. (BACL)**

**Right Head Tilt (Middle Channel)**

**Beyond E-Tech D620; Type: GSM 850/1900 Dual Band Mobile Phone; Serial: B2007**

Communication System: PCS1900; Frequency: 1880 MHz; Duty Cycle: 1:8.3  
 Medium parameters used:  $f = 1880$  MHz;  $\sigma = 1.45$  mho/m;  $\epsilon_r = 39.7$ ;  $\rho = 1000$  kg/m<sup>3</sup>  
 Phantom section: Right Section

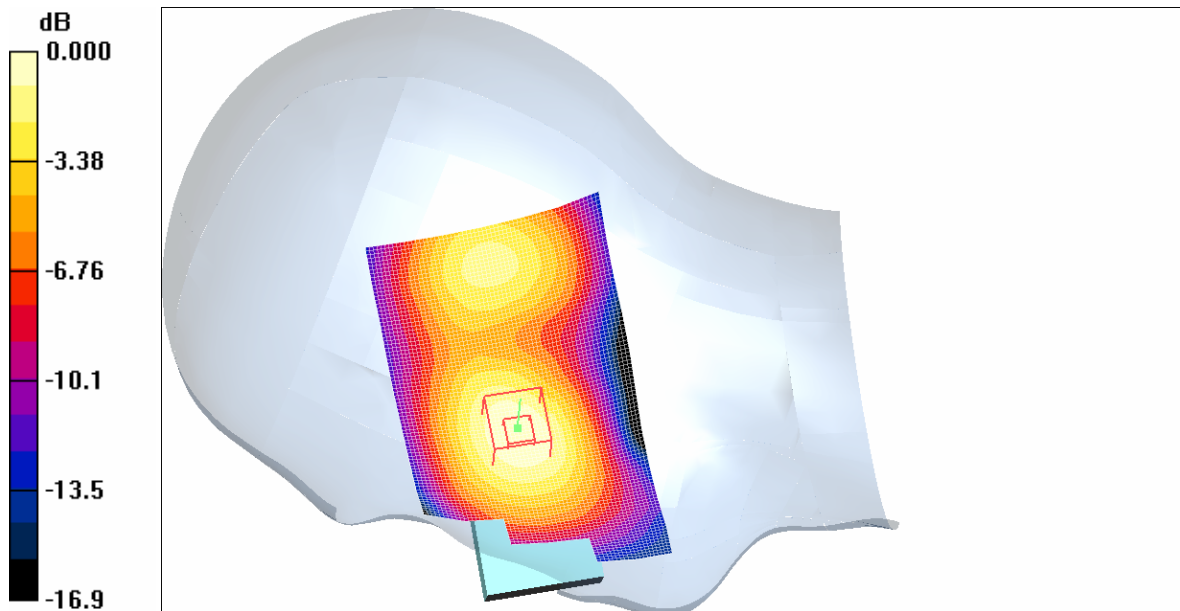
DASY4 Configuration:

- Probe: ET3DV6 - SN1604; ConvF(5.18, 5.18, 5.18); Calibrated: 9/23/2008
- Sensor-Surface: 4mm (Mechanical Surface Detection)
- Electronics: DAE3 Sn456; Calibrated: 11/8/2007
- Phantom: SAM with CRP; Type: Twin SAM; Serial: TP-1032
- Measurement SW: DASY4, V4.7 Build 71; Post processing SW: SEMCAD, V1.8 Build 184

**Right Head Tilt/Area Scan (61x101x1):** Measurement grid: dx=15mm, dy=15mm  
 Maximum value of SAR (interpolated) = 0.216 mW/g

**Right Head Tilt/Zoom Scan (7x7x7)/Cube 0:** Measurement grid: dx=5mm, dy=5mm, dz=5mm  
 Reference Value = 7.93 V/m; Power Drift = 0.006 dB  
 Peak SAR (extrapolated) = 0.298 W/kg

**SAR (1 g) = 0.192 mW/g; SAR (10 g) = 0.119 mW/g**  
 Maximum value of SAR (measured) = 0.212 mW/g



0 dB = 0.212 mW/g

**Plot # 7**

**Test Laboratory: Bay Area Compliance Lab Corp. (BACL)**

**Left Head touch (Middle Channel)**

**Beyond E-Tech D620; Type: GSM 850/1900 Dual Band Mobile Phone; Serial: B2007**

Communication System: PCS1900; Frequency: 1880 MHz; Duty Cycle: 1:8.3  
 Medium parameters used:  $f = 1880$  MHz;  $\sigma = 1.45$  mho/m;  $\epsilon_r = 39.7$ ;  $\rho = 1000$  kg/m<sup>3</sup>  
 Phantom section: Left Section

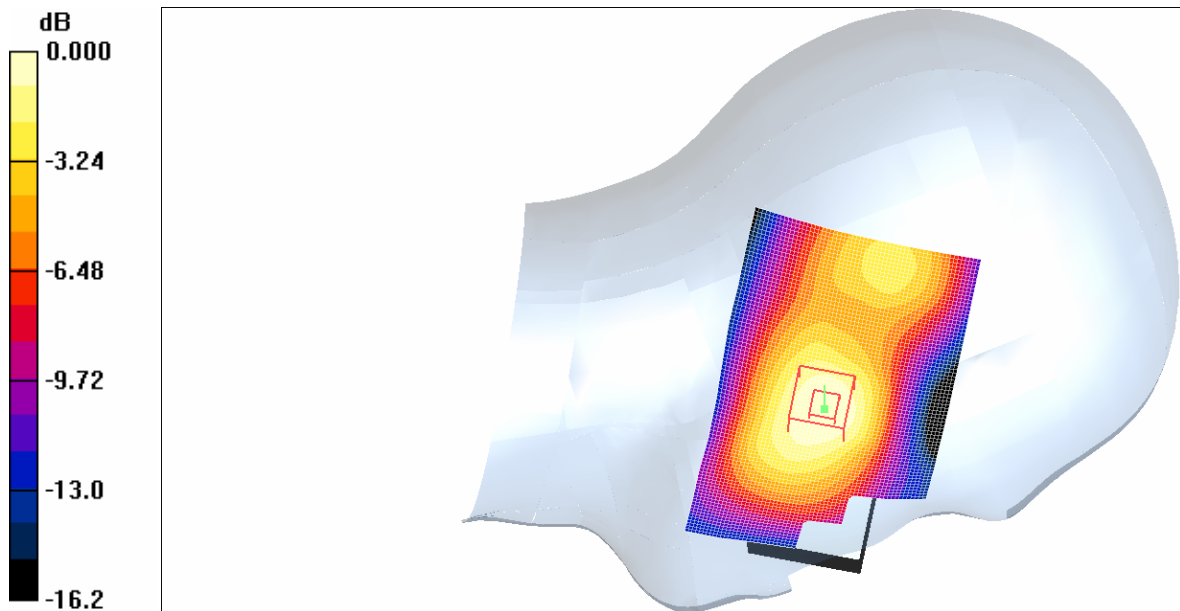
DASY4 Configuration:

- Probe: ET3DV6 - SN1604; ConvF(5.18, 5.18, 5.18); Calibrated: 9/23/2008
- Sensor-Surface: 4mm (Mechanical Surface Detection)
- Electronics: DAE3 Sn456; Calibrated: 11/8/2007
- Phantom: SAM with CRP; Type: Twin SAM; Serial: TP-1032
- Measurement SW: DASY4, V4.7 Build 71; Post processing SW: SEMCAD, V1.8 Build 184

**Left Head Touch/Area Scan (61x91x1):** Measurement grid: dx=15mm, dy=15mm  
 Maximum value of SAR (interpolated) = 0.306 mW/g

**Left Head Touch/Zoom Scan (7x7x7)/Cube 0:** Measurement grid: dx=5mm, dy=5mm, dz=5mm  
 Reference Value = 8.88 V/m; Power Drift = -0.020 dB  
 Peak SAR (extrapolated) = 0.427 W/kg

**SAR (1 g) = 0.273 mW/g; SAR (10 g) = 0.167 mW/g**  
 Maximum value of SAR (measured) = 0.293 mW/g



0 dB = 0.293 mW/g

**Plot # 8**

**Test Laboratory: Bay Area Compliance Lab Corp. (BACL)**

**Left Head Tilt (Middle Channel)**

**Beyond E-Tech D620; Type: GSM 850/1900 Dual Band Mobile Phone; Serial: B2007**

Communication System: PCS1900; Frequency: 1880 MHz; Duty Cycle: 1:8.3  
Medium parameters used:  $f = 1880$  MHz;  $\sigma = 1.45$  mho/m;  $\epsilon_r = 39.7$ ;  $\rho = 1000$  kg/m<sup>3</sup>  
Phantom section: Left Section

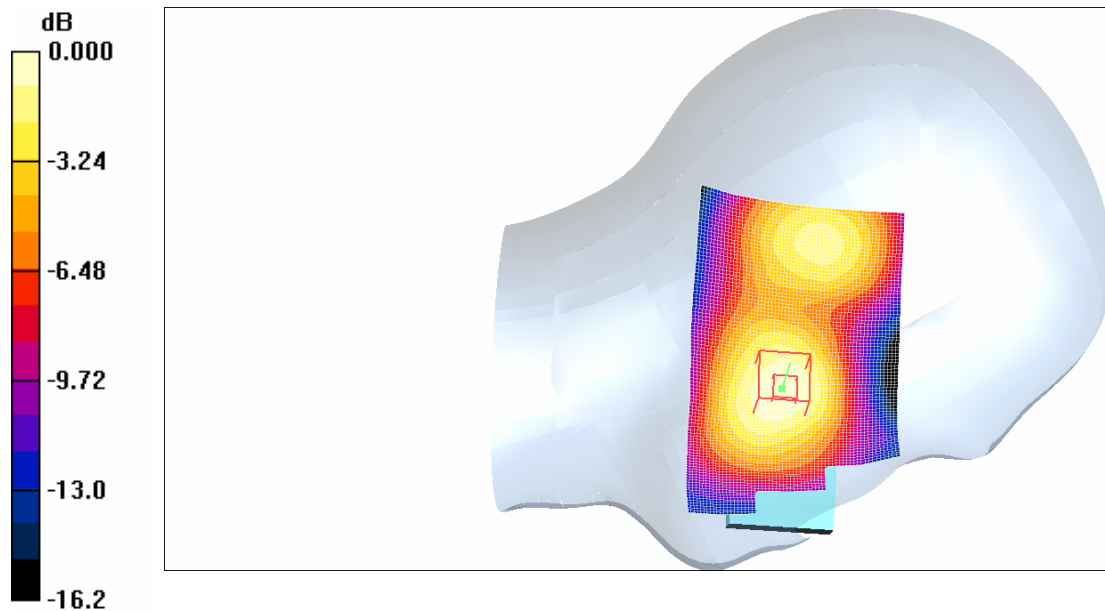
DASY4 Configuration:

- Probe: ET3DV6 - SN1604; ConvF(5.18, 5.18, 5.18); Calibrated: 9/23/2008
- Sensor-Surface: 4mm (Mechanical Surface Detection)
- Electronics: DAE3 Sn456; Calibrated: 11/8/2007
- Phantom: SAM with CRP; Type: Twin SAM; Serial: TP-1032
- Measurement SW: DASY4, V4.7 Build 71; Post processing SW: SEMCAD, V1.8 Build 184

**Left Head Tilt/Area Scan (61x101x1):** Measurement grid: dx=15mm, dy=15mm  
Maximum value of SAR (interpolated) = 0.208 mW/g

**Left Head Tilt/Zoom Scan (7x7x7)/Cube 0:** Measurement grid: dx=5mm, dy=5mm, dz=5mm  
Reference Value = 7.68 V/m; Power Drift = -0.065 dB  
Peak SAR (extrapolated) = 0.294 W/kg

**SAR (1 g) = 0.187 mW/g; SAR (10 g) = 0.115 mW/g**  
Maximum value of SAR (measured) = 0.201 mW/g



0 dB = 0.201 mW/g

**Plot # 9**

**Test Laboratory: Bay Area Compliance Lab Corp. (BACL)**

**1.5 cm Separation to Flat Phantom with Headset (Middle Channel)**

**Beyond E-Tech D620; Type: GSM 850/1900 Dual Band Mobile Phone; Serial: B2007**

Communication System: PCS1900; Frequency: 1880 MHz; Duty Cycle: 1:8.3  
 Medium parameters used:  $f = 1880 \text{ MHz}$ ;  $\sigma = 1.57 \text{ mho/m}$ ;  $\epsilon_r = 51.1$ ;  $\rho = 1000 \text{ kg/m}^3$   
 Phantom section: Flat Section

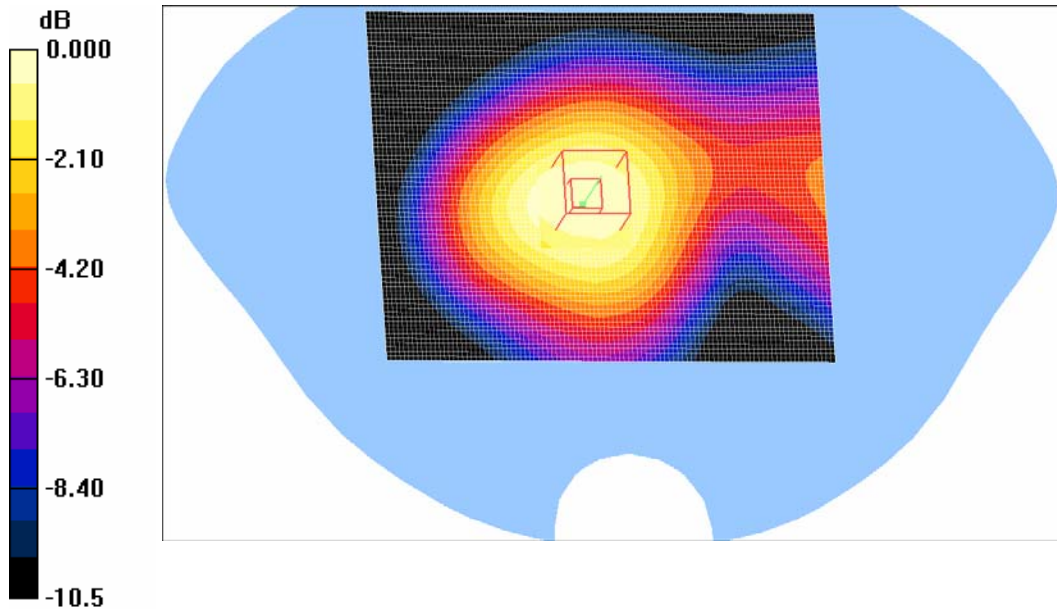
DASY4 Configuration:

- Probe: ET3DV6 - SN1604; ConvF(4.52, 4.52, 4.52); Calibrated: 9/23/2008
- Sensor-Surface: 4mm (Mechanical Surface Detection)
- Electronics: DAE3 Sn456; Calibrated: 11/8/2007
- Phantom: SAM with CRP; Type: Twin SAM; Serial: TP-1032
- Measurement SW: DASY4, V4.7 Build 71; Post processing SW: SEMCAD, V1.8 Build 184

**EUT 1.5 cm Separation to Flat Phantom with Headset/Area Scan (81x101x1):** Measurement grid:  $dx=15\text{mm}$ ,  $dy=15\text{mm}$   
 Maximum value of SAR (interpolated) = 0.126 mW/g

**EUT 1.5 cm Separation to Flat Phantom with Headset/Zoom Scan (7x7x7)/Cube 0:** Measurement grid:  $dx=5\text{mm}$ ,  $dy=5\text{mm}$ ,  $dz=5\text{mm}$   
 Reference Value = 8.64 V/m; Power Drift = 0.028 dB  
 Peak SAR (extrapolated) = 0.188 W/kg

**SAR (1 g) = 0.117 mW/g; SAR (10 g) = 0.074 mW/g**  
 Maximum value of SAR (measured) = 0.125 mW/g



0 dB = 0.125 mW/g

**Plot # 10**

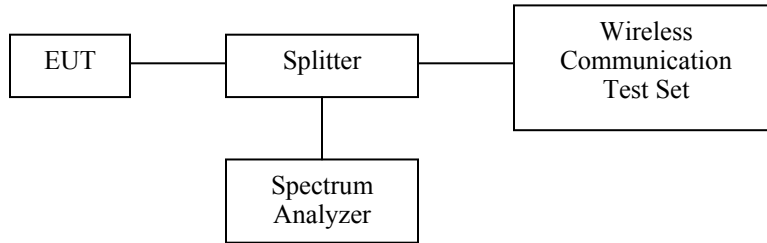
## APPENDIX F – CONDUCTED OUTPUT POWER MEASUREMENT

### Provision Applicable

The measured peak output power should be greater and within 5% than EMI measurement.

### Test Procedure

The RF output of the transmitter was connected to the input of the spectrum analyzer through sufficient attenuation.



### Test Equipment

Manufacturer	Description	Model No.	Serial No.	Calibration Date
Agilent	Analyzer, Spectrum	E4446A	US44300386	2008-05-19
Agilent	Wireless Communication Test Set	E5515C	GB44051221	2008-08-08

### Test Results

Band	Channel No.	Frequency (MHz)	Measured Output Power	
			(dBm)	(Watt)
Cellular	128	824.2	33.10	2.042
	190	836.6	32.89	1.945
	251	848.8	32.65	1.841
PCS	512	1850.2	28.85	0.767
	661	1880.0	28.50	0.708
	810	1909.8	28.45	0.700

---

## APPENDIX G – EUT TEST POSITION PHOTOS

---

**1.5 cm Body-worn with Headset Setup Photo**

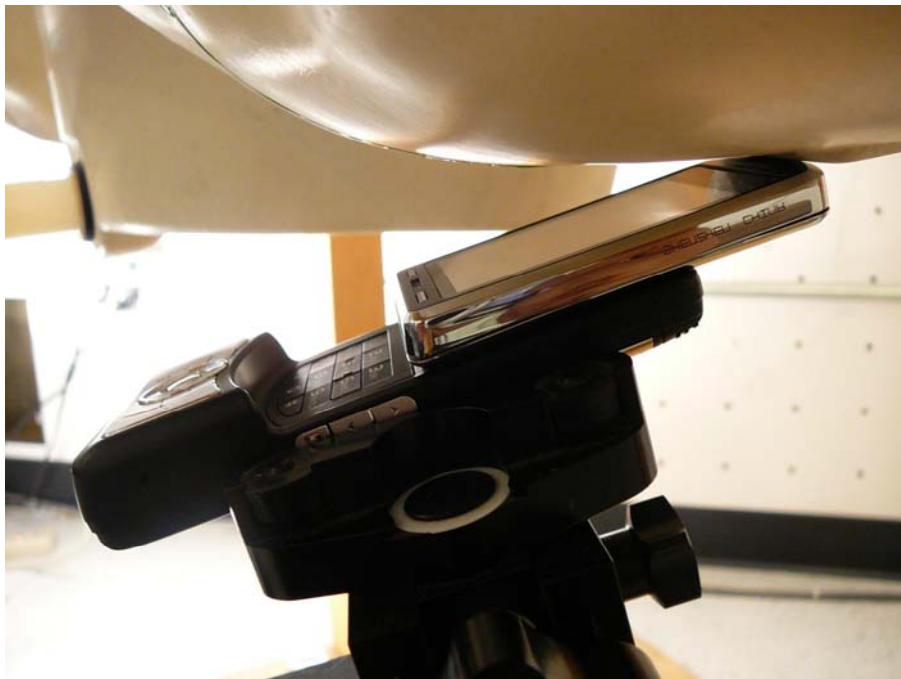




**EUT Left Head Touch Setup Photo**

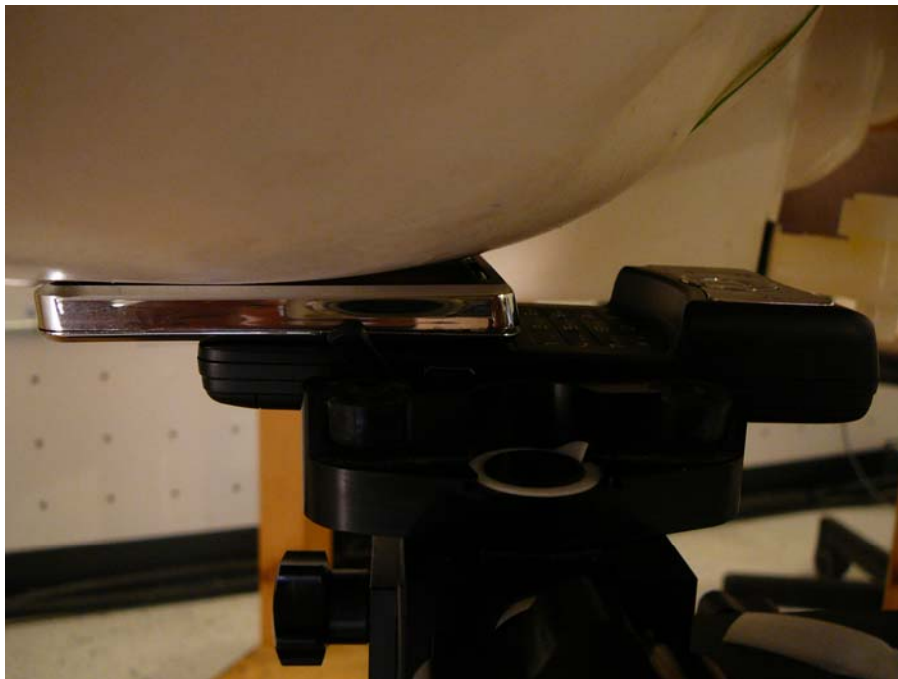


**EUT Left Head Tilt Setup Photo**





**EUT Right Head Touch Setup Photo**



**EUT Right Head Tilt Setup Photo**



## APPENDIX H- EUT PHOTO

**EUT – Front View**



**EUT – Back View**



**EUT – Open View**



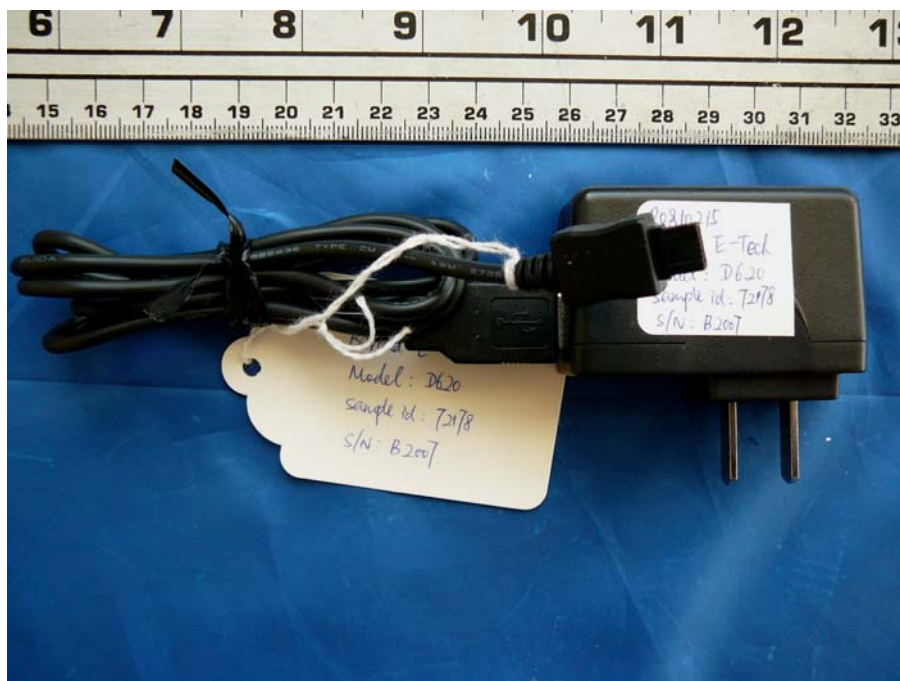
**EUT – Battery Compartment View**



**EUT – Battery View**



**EUT – Accessory Charger**





**EUT – Accessory Earphone**



---

## APPENDIX I - INFORMATIVE REFERENCES

---

- [1] Federal Communications Commission, "Report and order: Guidelines for evaluating the environmental effects of radiofrequency radiation", Tech. Rep. FCC 96-326, FCC, Washington, D.C. 20554, 1996.
- [2] David L. Means Kwok Chan, Robert F. Cleveland, "Evaluating compliance with FCC guidelines for human exposure to radiofrequency electromagnetic fields", Tech. Rep., Federal Communication Commission, Office of Engineering & Technology, Washington, DC, 1997.
- [3] Thomas Schmid, Oliver Egger, and Niels Kuster, "Automated E-field scanning system for dosimetric assessments", IEEE Transactions on Microwave Theory and Techniques, vol. 44, pp. 105-113, Jan. 1996.
- [4] Niels Kuster, Ralph Kastle, and Thomas Schmid, "Dosimetric evaluation of mobile communications equipment with known precision", IEEE Transactions on Communications, vol. E80-B, no. 5, pp. 645-652, May 1997.
- [5] CENELEC, "Considerations for evaluating of human exposure to electromagnetic fields (EMFs) from mobile telecommunication equipment (MTE) in the frequency range 30MHz - 6GHz", Tech. Rep., CENELEC, European Committee for Electrotechnical Standardization, Brussels, 1997.
- [6] ANSI, ANSI/IEEE C95.1-1992: IEEE Standard for Safety Levels with Respect to Human Exposure to Radio Frequency Electromagnetic Fields, 3 kHz to 300 GHz, The Institute of Electrical and Electronics Engineers, Inc., New York, NY 10017, 1992.
- [7] Katja Pokovic, Thomas Schmid, and Niels Kuster, "Robust setup for precise calibration of E-field probes in tissue simulating liquids at mobile communications frequencies", in ICECOM '97, Dubrovnik, October 15-17, 1997, pp. 120-24.
- [8] Katja Pokovic, Thomas Schmid, and Niels Kuster, "E-field probe with improved isotropy in brain simulating liquids", in Proceedings of the ELMAR, Zadar, Croatia, 23-25 June, 1996, pp. 172-175.
- [9] Volker Hombach, Klaus Meier, Michael Burkhardt, Eberhard Kuhn, and Niels Kuster, "The dependence of EM energy absorption upon human head modeling at 900 MHz", IEEE Transactions on Microwave Theory and Techniques, vol. 44, no. 10, pp. 1865-1873, Oct. 1996.
- [10] Klaus Meier, Ralf Kastle, Volker Hombach, Roger Tay, and Niels Kuster, "The dependence of EM energy absorption upon human head modeling at 1800 MHz", IEEE Transactions on Microwave Theory and Techniques, Oct. 1997, in press.
- [11] W. Gander, Computermathematik, Birkhaeuser, Basel, 1992.
- [12] W. H. Press, S. A. Teukolsky, W. T. Vetterling, and B. P. Flannery, Numerical Recipes in C, The Art of Scientific Computing, Second Edition, Cambridge University Press, 1992. Dosimetric Evaluation of Sample device, month 1998 9
- [13] NIS81 NAMAS, "The treatment of uncertainty in EMC measurement", Tech. Rep., NAMAS Executive, National Physical Laboratory, Teddington, Middlesex, England, 1994.
- [14] Barry N. Taylor and Christ E. Kuyatt, "Guidelines for evaluating and expressing the uncertainty of NIST measurement results", Tech. Rep., National Institute of Standards and Technology, 1994. Dosimetric Evaluation of Sample device, month 1998 10.

\*\*\*\*\* **END OF REPORT** \*\*\*\*\*