

FCC ID:

1. This device complies with Part 15 of the FCC Rules. Operation is subject to the following two conditions:
(1) This device may not cause harmful interference, and
(2) This device must accept any interference received, including interference that may cause undesired operation.
2. Changes or modifications not expressly approved by the party responsible for compliance could void the user's authority to operate the equipment.

Federal Communications Commission (FCC) Statement

This equipment has been tested. And it found to comply with the limits for a Class B digital device pursuant to Part 15 of the FCC Rules. These limits are designed to provide reasonable protection against harmful interference in a residential installation. This equipment generates and uses and radiates radio frequency energy and, if not installed and used in accordance with the instruction, may cause harmful interference to radio communications. However, there is no guarantee that interference will not occur in a particular installation. If this equipment does cause harmful interference to radio or television reception, which can be determined by turning the equipment off and on, the user is encouraged to try to correct the interference by one or more of the following measures:

- Reorient or relocate the receiving antenna.
- Increase the separation between the equipment and receiver.
- Connect the equipment into an outlet on a circuit different from that to which the receiver is connected.
- Consult the dealer or an experienced radio /TV technician for help.

Warning: A shielded-type power cord is required in order to meet FCC emission limits and also to prevent interference to the nearby radio and television reception. It is essential that only the supplied power cord be used.

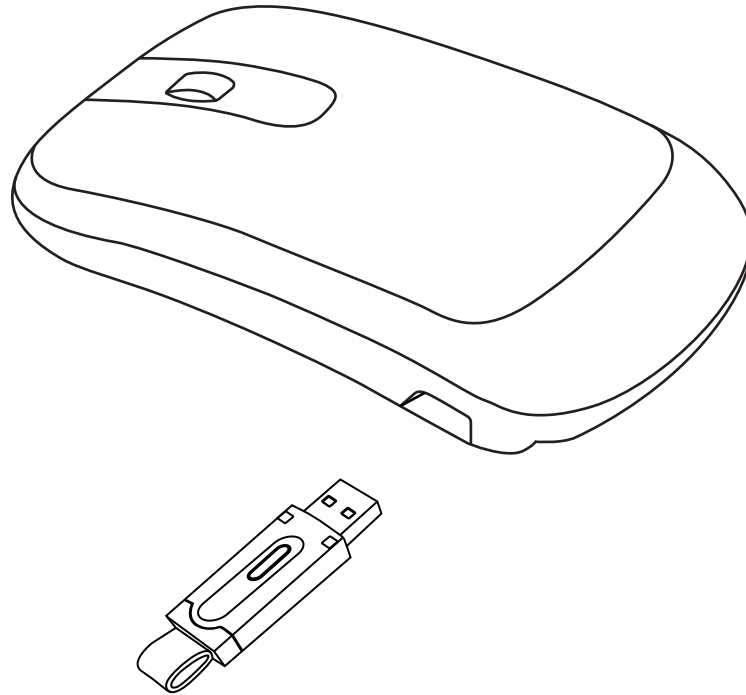
NOTE: The manufacturer is not responsible for any radio or TV interference caused by unauthorized modifications to this equipment. Such modifications could void the user's authority to operate the equipment.

CAUTIONS

- Always use rechargeable batteries only when recharging your mouse
- Observe polarity and the direction of battery as it may cause explosion
- Stop using the mouse immediately when battery compartment encounters an overheat problem
- Please charge 7 hours for first application

WIRELESS MOUSE

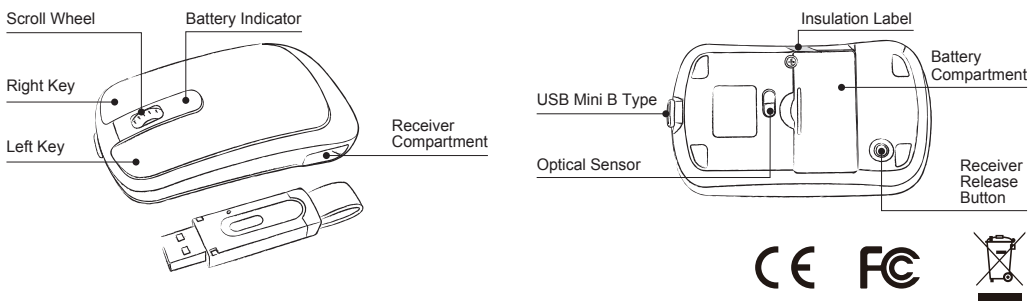
MODEL: 82-801



4

1

WIRELESS CARBON FIBER MOUSE MANUAL



INTRODUCTION

This leather wireless mouse is a fashionable design that combines leather with chrome . It is a newly developed wireless 2.4GHz RF mouse including both Remote (Mouse) and Dongle (Receiver). Utilizing USB charging technology this mouse can be completely recharged simply by connecting it to USB port on your computer.

FEATURES

1. 3D optical mouse with 1000 dpi resolution
2. 2.4GHz radio frequency wireless transmission
3. Smart identification system detecting the operation distance
4. Battery recharge function via USB cable
5. Low battery power indicator
6. Smart identification system detecting the misuse of non-rechargeable batteries
7. Smart identification system activating over discharge batteries
8. Smart battery recharging protection system
9. Auto switch on / off function
10. Smart power management
11. LED indicator:
 - a) Under normal condition,when taking out the USB receiver from the wireless mouse, red LED flashes 5 seconds and then light off
 - b) When low battery: LED flashes when moving the mouse
 - c) While charging: green LED flashes every 0.5 sec.
 - d) Fully charged: green LED shines
 - e) Identify non-rechargeable battery: green LED flashes every 1 sec. (receiver is not connected to PC)

SPECIFICATIONS

- Interface: USB 1.1
- Sensor report rate on mouse: 3000 frame/sec
- Operation angle: 360 degrees
- Operation distance: 4.5m or above distance of obstacle-free environment
- Frequency: 2.4GHz
- ID number: 2¹⁶ random ID per channel
- Sensor resolution : 1000 DPI
- Operation temperature: -5 to 40 degrees
- Operation humidity: 20% - 90% RH
- Operation current: about 20mA

- Operation system: Windows ME/2000/XP/Vista/Windows7, Mac OS
- Product size: L98 x W59 x H22mm
- Product weight: 85g

BATTERY RECHARGE INSTRUCTION

1. The battery needs to be recharged immediately when the battery power indicator turns red.
2. **Always use rechargeable batteries only! The charge unit could not be charged with alkaline batteries and it could cause damage to the mouse and set off super heat, fire and explosion.**
3. This device requires AAA rechargeable batteries (2 pcs) for recharge.
4. Dispose the batteries in accordance with local regulations.
5. Replace old and weak batteries promptly.
6. As long as the recharge cable is connected to the computer, the mouse still can be used even though the battery is not enough or without any batteries inside the battery compartment.

Trouble Shooting: Mouse may not be worked properly after battery power is totally used up even the USB charging cable is reconnected after. Simply follow the steps as below:

- (1) install the receiver back to compartment first
- (2) connect the charging cable again
- (3) release the receiver from compartment again and connect to computer
- (4) mouse will worked properly while recharging
- (5) If it still doesn't work, please enter both reset ID key of mouse and receiver

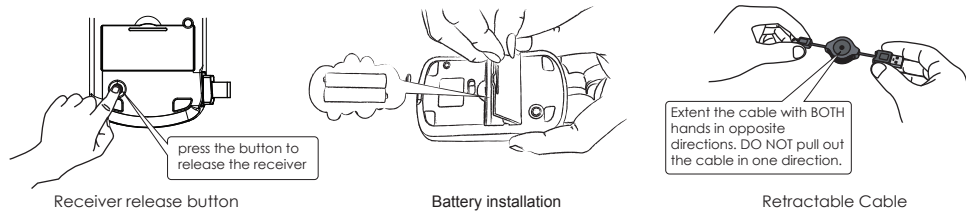
BATTERY CONSUMPTION & ELECTRICAL PROPERTIES

- Operating mode: 20mA / DC 2.4V
- Sleep mode: 20uA / DC 2.4V / (Note: the mouse will switch to power saving mode if not working over 3 second; and powered off automatically if not working over 10 minutes, Please press any buttons or scroll wheel of the mouse when it gets into sleep mode.)
- Low battery indicator: 2.3V
- Battery type: AAA 1.2V 850mAh Ni-MH rechargeable battery X 2 pcs
- Continuous working hrs: approx: 50 hrs
- Battery life: under average usage, 3-4 hrs per day, the batteries should last approx. 2 weeks
- Normal battery charging time: Full power / 5hrs at DC 5V
- Receiver power requirement: DC 5V

ID KEY MATCHING METHOD

For first time usage guidelines, please match the ID key of mouse and reciever Under normal condition, plug the receiver into the PC, pressing the right key and scroll wheel of the mouse at the SAME time (at least 10 seconds). Key matching is completed.

ILLUSTRATIONS



2

3

Instruction Manual	Model	82-801
	Description	wireless mouse
	IB Size	296 x 207mm
	Material	105g art paper
	Print Color	1 black + 1 black
	Surface Treatment	NA
	Date	Oct 21.2010