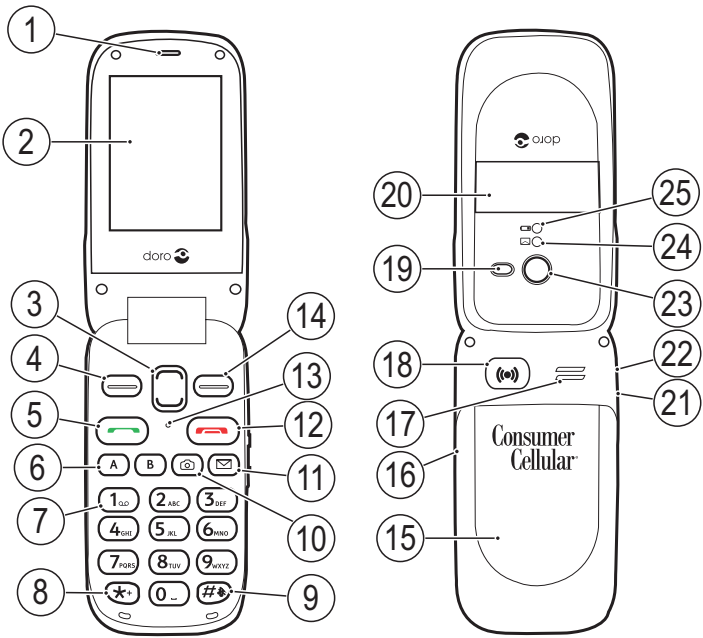


Doro PhoneEasy® 626

Quick Start Guide

English



Consumer Cellular



1. Earpiece

2. Display

3. Arrow buttons

4. Left selection button

5. Call button

6. Speed dials

7. Voice mail

8. International prefix/
Symbols

9. Input method/Silent

10. Camera shortcut

11. Message shortcut

12. End call/Power on/off

13. Microphone

14. Right selection button
15. Battery cover

16. Volume control

17. Loudspeaker

18. Assistance button

19. Flash

20. External display

21. Headset socket

22. Charging socket

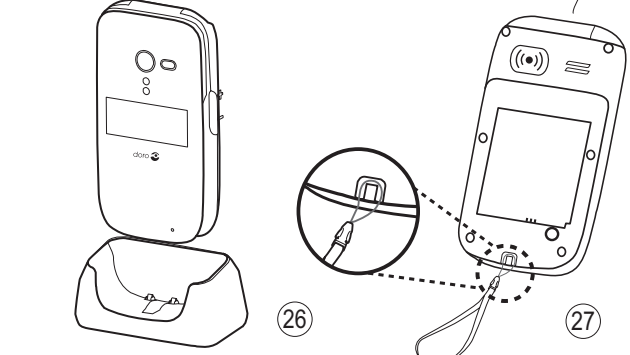
23. Camera lens

24. Green light=New
message/missed call)

25. Red light=Battery low/
charging

26. Charging stand

27. Lanyard



The items supplied with your phone might vary depending on the software and accessories available in your region or offered by your service provider. You can obtain additional accessories from your local Doro dealer. The supplied accessories provide the best performance with your phone.

The full manual can be downloaded at www.ConsumerCellular.com/DoroPhoneEasy626 OR www.doro.com

You may also view helpful how-to videos at www.ConsumerCellular.com/Support/VideosAnd-Manuals

1. GET STARTED

Charging

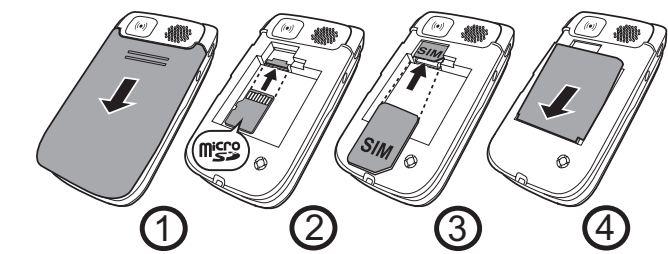
Warning!
Only use batteries, charger and accessories that have been approved for use with this particular model. Connecting other accessories may be dangerous and may invalidate the phone’s type approval and guarantee.

When the battery is running low, is displayed and a warning signal is heard. To charge the battery, connect the AC power adapter to a wall socket and to the charging socket on the phone.

Important!
Turn off the phone and disconnect the charger before removing the battery cover.

Installing the SIM card and battery

The SIM card and battery are normally pre-installed for you. Follow these instructions should you ever need to access them yourself.



1. Remove the battery cover and the battery if it is already installed.

2. Optional: Insert the memory card into the slot **under** the SIM card holder. Make sure that the memory card contacts are facing upwards and push the card in, until you hear a click. To remove or replace the card, push the card in until you hear a click, then release and pull out the card.

3. Insert the SIM card by gently sliding it into the **UPPER** holder. Make sure that the SIM card’s contacts are facing downwards and that the cut off corner is pointing outwards.

4. Insert the battery by sliding it into the battery compartment. Replace the battery cover.
- Note!** Take care not to scratch or bend the contacts on the cards.

Important!

Use only compatible memory cards for use with this device. Compatible card type: microSD, microSDHC. Incompatible cards may damage the card and the device and corrupt data stored on the card. Memory cards are sold separately.

Note! To save power the LCD backlight goes off after a while. Press any button to illuminate the display. Full battery capacity will not be reached until the battery has been charged 3–4 times. Batteries degrade over time, which means that call time and standby time will normally decrease with regular use. During extended operation, the device may feel warm. In most cases, this is normal. To avoid getting too warm, the device may switch off charging. If the device is not working properly, please use the support details, see [Support](#).

Turning phone on & off

1. Press and hold the red button on the phone to turn it on/off. It takes several seconds so keep holding until you hear the sound.

2. If the SIM card is valid but protected with a PIN code (Personal Identification Number), **PIN** is displayed. Enter the PIN code and press **OK**. Delete with **Clear**.

Note! If PIN and PUK codes were not provided with your SIM card, please contact your service provider. **Tip:** It is recommended to remove the protective plastic film from the display to enhance the visibility.

Attempts: # shows the number of PIN attempts left. When no more attempts remain, **PIN blocked** is displayed. The SIM card must now be unlocked with the PUK code (Personal Unblocking Key).

1. Enter the PUK code and confirm with **OK**.

2. Enter a new PIN code and confirm with **OK**.

3. Re-enter the new PIN code and confirm with **OK**.

2. GET TO KNOW YOUR PHONE

Start-up wizard

When starting the telephone for the first time, you can use the Start-up wizard to set some basic settings.

Tip: You can run the start-up wizard later if you want.

Step-by-step instructions

The arrow () indicates next action in step-by-step instructions. To confirm an action, press **OK**. To select an item, scroll or highlight the item using and then press **OK**.

Enter text

Select character

- Press a numerical button repeatedly until desired character is shown. Wait a few seconds before entering the next character.

Special characters/smileys

1. Press for a list of special characters and smileys.

2. Select the desired character with and press **OK** to enter it.

Move the cursor within text

- Use the side buttons +/- or to move the cursor within the text.

Upper case, lower case and numerals

- Press to cycle upper case, lower case and numerals.

Change writing language

1. Press and hold for a list of available languages.

2. Select language with and press **OK** to confirm.

Enter text with predictive text

You can use Smart ABC (eZiType™) input method which uses a dictionary to suggest words. See [Message settings/Predictive text](#) in the full manual.

Enter phone numbers

For international calls, always use + before the country code for best operation. Press twice for the international prefix +.

You can dial or save phone numbers with pauses for use with automated systems, such as voicemail or credit card billing numbers. There are two types of pauses available on your phone, press repeatedly until desired character is shown.

Setting the language, time and date

The default language is determined by the SIM card. See the full manual if you would like to change language, time and date.

Save energy

When you have fully charged the battery and disconnected the charger from the device, unplug the charger from the wall outlet.

3. CALLS

Make a call

1. Enter the phone number.

2. Press to start the call.

3. Press to end the call.
- Note!** There is no dial tone. Simply have the phone turned on and it is ready for use.

Make a call from the phonebook

1. Press **Name** to open the phonebook.

2. Use to scroll through the phonebook, or quick search by pressing the button corresponding to the first letter of the name.

3. Press to dial the selected entry, or press **Back** to return to standby.

Receive a call

To answer an incoming call when the flip is closed, open the flip.

If the flip is already open, or if **Open to answer** is set to **Off**:

1. Press to answer, or press **Silent** to switch off the ring signal and then **Reject** to reject the call (busy signal). Alternately, press to reject the call directly.

2. Press to end the call.

See [Settings/Calls/Answer mode](#) in the full manual.

Other Call Options

Voice mail

The voice mailbox can be called by pressing and holding .

Speed dial

The numerical buttons **A** and **B** and the numerical buttons **0** and **2-9** can be used for speed dialing.

Add speed dial numbers

- **Menu** ➔ **Settings** ➔ **Calls** ➔ **Speed dial**

Top 10

Set the entry as one of the first 10 contacts listed in the phonebook.

- **Menu** ➔ **Settings** ➔ **Calls** ➔ **Top 10**

Volume control

Use to adjust the sound volume. The volume level is indicated on the display. See also [Audio setup](#) in the full manual.

Selection buttons

The selection buttons have multiple functions. The current button function is shown above the selection button on the display. During a call the selection buttons give access to additional functions.

Call log

Received, missed, and dialed calls are saved in a combined call log. 20 calls of each type can be stored in the log. For multiple calls related to the same number, only the most recent call is saved.

Retrieving and dialing

1. Press .

2. Use to scroll through the call log

= Received call

= Dialed call

= Missed call

3. Press to dial the highlighted number.

4. USING PHONEBOOK

The Phonebook can store 500 entries with 3 phone numbers in each entry.

Create a phonebook entry

1. Press **Menu** ➔ **Phonebook** ➔ **-New contact-** ➔ **Add**.

2. Enter **Name** for the contact. Delete with **Clear**.

3. Use to select **Mobile**, **Home** or **Office**, enter the phone number(s) including the area code.

4. Select **Picture** ➔ **Edit** to associate a picture to the contact.

• **Take picture** to use the camera to take a picture.

• **My pictures** to select an existing picture.

5. Select **Ringtone** ➔ **Edit**.

• **System** to select from pre-installed files.

• **User** to select from your downloads.

6. When done, press **Save**.

See [Phonebook/Add contact](#) in the full manual.

Create ICE entry (In Case of Emergency)

First responders can access additional information such as medical information from the victim’s phone in case of emergency. In the event of a trauma, it is critical to have this information as early as possible to increase the chances of survival. All fields are optional, but the more information provided the better.

1. Press **Menu** ➔ **Phonebook** ➔ **ICE**.

2. Use to scroll the list of contacts.

3. Press **Edit** to add or edit information in each field. Delete with **Clear**.

4. Press **Save** when done.

4. SOS/911 CALLS

As long as the phone is switched on, it is always possible to place an SOS call by entering the main local emergency number for your present location followed by .

Some networks accept calls to emergency numbers without a valid SIM card. Contact your service provider for more information.

Note! Sometimes an emergency call cannot be placed due to network, environment or interference issues.

5. ASSISTANCE BUTTON

The Assistance button on the back of the phone will automatically dial one number for you. This can be used as a easy way to reach a family member or friend if you need help. The Assistance function must be activated before use. See the full manual for instructions.

6. CAMERA

To get sharp photos, wipe the lens clean with a dry cloth.

1. Press shortcut button . Alternately, press **Menu** ➔ **Camera** ➔ **Camera**.

2. Press to take photo.

3. Press **Options** or **Back** (if you do not make any selection the picture is saved).

7. MESSAGES

Create and send text messages

1. Press shortcut button . Alternately, press **Menu** ➔ **Messages** ➔ **Create new** ➔ **Text message** ➔ **Write message**.

2. Type your message, then press **To**.

3. Select a recipient from phonebook. Alternately, select **Enter number** to add recipient manually and press **Done**.

4. Press **Add** to add more recipients.

5. When done, press **Send**.
- Tip:** You can modify the recipients by selecting one, press **Options** ➔ **Edit/Delete**.

Note! If you choose to add multiple recipients, you will be charged for each recipient (maximum 10).

Read an incoming message

When you receive a message while your phone is on, the screen will display . Press **View** to read the message.

Create and send picture messages

A picture message can contain text and media objects such as pictures, sound recordings and video. Both you and the recipient must have sub-scriptions that support picture messages.

1. Press shortcut button . Alternately, press **Menu** ➔ **Messages** ➔ **Create new** ➔ **Picture message** ➔ **Write message**.

2. Type your message, then press **Options**.

3. Add items to your message from the options **Add picture**, **Add sound**, **Add video** and **Add subject**.

4. Add recipients with **To** and **Send** when ready.

Emergency alerts

1. Press shortcut button . Alternately, press **Menu** ➔ **Messages**.

2. Select **Emergency Alerts**.

3. Select **Inbox**.

4. Select a message and press **View**. Use to scroll up/down.

8. CUSTOM SETTINGS

Silent

Use **Silent** to silence your ringtones. Press and hold to activate/deactivate silent. **Tip:** Press and hold + or – to temporary switch off the ring signal without opening the flip.

Change ringtones

You can select different ringtones. Follow this sequence to reach the customization.

1. **Menu** ➔ **Settings** ➔ **Sound** ➔ **Tone setup** ➔ **Ringtone**.

2. Use to scroll between options. When you pause on a melody, you will hear its sound.

3. Once you have found the ringtone you wish to use, press **OK** to select.

You can use this same process to customize the tones for your the **Alarm**, **Message tone**, **Opening tone**, **Closing tone**, **Keypad tone**, **Power on** and **Power off** in the same way.

Display background (wallpaper)

You can select different display backgrounds.

• **Menu** ➔ **Settings** ➔ **Display** ➔ **Wallpaper**

9. BLUETOOTH®

You can connect wireless to other Bluetooth compatible devices such as headsets.

• **Menu** ➔ **Settings** ➔ **Bluetooth** ➔ **Function on/off**

10. USEFUL TOOLS

Alarm

Use the Alarm feature to set wake-up call or help you keep track of an important time.

Organizer

Use the Organizer to store tasks to help you keep track of important events.

Note! These functions will work even when the phone is switched off.

Calculator

The Calculator can perform basic math operations.

Image viewer

Use the Image viewer to view your saved images and detailed information about files, e.g. date, size and copyright.

Flashlight

Use the built-in flashlight. **Note!** The flashlight will drain the battery very quickly. Remember to turn off the flashlight after use.

1. DISCLAIMER AND LIMITATION OF LIABILITY

Doro AB and its affiliates, licensees and retailers assume no responsibility for any damage or loss resulting from the use of this guide. Doro AB and its affiliates or licensees assume no responsibility for any loss or claims by third parties that may arise through the use of this software. Doro AB and its affiliates or licensees assume no responsibility for any damage or loss caused by deletion of data as a result of malfunction, dead battery, or repairs. Be sure to make backup copies of all important data on other media to protect against data loss.

TO THE MAXIMUM EXTENT PERMITTED BY APPLICABLE LAW, UNDER NO CIRCUMSTANCES SHALL DORO AB OR ANY OF ITS AFFILIATES, LICENSEES AND RETAILERS BE RESPONSIBLE FOR ANY LOSS OF DATA OR INCOME OR ANY SPECIAL, INCIDENTAL, CONSEQUENTIAL OR INDIRECT DAMAGES HOWSOEVER CAUSED. THE CONTENTS OF THIS DOCUMENT ARE PROVIDED “AS IS.” EXCEPT AS REQUIRED BY APPLICABLE LAW, NO WARRANTIES OF ANY KIND, EITHER EXPRESS OR IMPLIED, INCLUDING, BUT NOT LIMITED TO, THE IMPLIED WARRANTIES OF MERCHANTABILITY AND FITNESS FOR A PARTICULAR PURPOSE, ARE MADE IN RELATION TO THE ACCURACY, RELIABILITY, OR CONTENTS OF THIS DOCUMENT. DORO AB RESERVES THE RIGHT TO REVISE THIS DOCUMENT OR WITHDRAW IT AT ANY TIME WITHOUT PRIOR NOTICE.

2. FCC/INDUSTRY CANADA NOTICE

This device complies with part 15 of the FCC Rules and Industry Canada license-exempt RSS standard(s). Operation is subject to the following two conditions: (1) This device may not cause harmful interference, and (2) this device must accept any interference received, including interference that may cause undesired operation.

This equipment has been tested and found to comply with the limits for a Class B digital device, pursuant to part 15 of the FCC Rules/ Canadian ICES-003. These limits are designed to provide reasonable protection against harmful interference in a residential installation. This equipment generates, uses and can radiate radio frequency energy and, if not installed and used in accordance with the instructions, may cause harmful interference to radio communications. However, there is no guarantee that interference will not occur in a particular installation. If this equipment does cause harmful interference to radio or television reception, which can be determined by turning the equipment off and on, the user is encouraged to try to correct the interference by one or more of the following measures:

- Reorient or relocate the receiving antenna.
- Increase the separation between the equipment and the receiver.
- Connect the equipment to an outlet on a circuit different from that to which the receiver is connected.
- Consult the dealer or an experienced radio/TV technician for help.

The FCC or Industry Canada can require you to stop using your unit if such interference cannot be eliminated.

Doro has not approved any changes or modifications to this device by the user. Any changes or modifications could void the user’s authority to operate the equipment.

3. FCC/INDUSTRY CANADA NOTICE

Cet appareil est conforme aux dispositions de la partie 15 des règles de la FCC et des normes CNR d’Industrie Canada sur les appareils radio exempts de licence. Son utilisation est assujettie aux deux conditions suivantes : (1) Cet appareil ne doit pas causer d’interférence nuisible; et (2) cet appareil doit accepter toute interférence reçue, y compris l’interférence qui pourrait causer un fonctionnement non désiré.

Cet équipement a été testé et jugé conforme aux limites d’un appareil numérique de la Classe B, en vertu de la partie 15 des règles de la FCC et de la NMB-003 canadienne. Ces limites sont conçues pour fournir une protection raisonnable contre l’interférence nuisible dans une installation résidentielle. Cet équipement génère, utilise et peut émettre de l’énergie radiofréquence et, s’il n’est pas installé et utilisé conformément aux instructions, peut causer une interférence nuisible aux communications radio. Toutefois, il n’est pas garanti que l’interférence ne se produira pas dans une installation particulière. Si cet équipement cause une interférence nuisible à la réception radio ou de programmes de télévision, laquelle peut être déterminée en éteignant et en allumant l’équipement, l’utiliser est encouragé à essayer de corriger l’interférence par l’une ou plusieurs des mesures suivantes :

- Réorientez ou relocalisez l’antenne de réception.
- Augmentez la séparation entre l’équipement et le receveur.
- Connectez l’équipement à une prise sur un circuit différent de celui auquel de le receveur est connecté.
- Consultez le vendeur ou un technicien radio/de télévision pour obtenir de l’aide.

La FCC ou Industrie Canada peut vous obliger à arrêter d’utiliser votre appareil si une telle interférence ne peut pas être éliminée.

Doro n’a pas approuvé les changements ou modifications apportés à cet appareil par l’utilager. Tous les changements ou modifications apportés peuvent entraîner la révocation de l’autorisation d’utilisation de l’appareil.

4. SAFETY INSTRUCTIONS

CAUTION

The unit and the accessories can contain small parts. Keep all of the equipment out of the reach of small children. The AC power adapter is the disconnect device between the product and AC power. The AC power outlet must be close to the equipment and easily accessible.

Network services and costs

Your device is approved for use on the WCDMA 850/1900 MHz, GSM 850/1800/1900 MHz networks. To use the device, you need a subscription with a service provider.

Using network services may result in traffic costs. Some product features require support from the network, and you may need to subscribe to them.

Operating environment

Follow the rules and laws that apply wherever you are, and always turn off the unit whenever its use is prohibited or can cause interference or hazards. Only use the unit in its normal user position.

This unit complies with guidelines for radiation when it is used either in a normal position against your ear, or when it is at least 0.6 in from your body. If the unit is carried close to your body in a case, belt holder or other holder, these holders should not contain any metal, and the product should be placed at the distance from your body specified above. Make sure that the distance instructions above are followed until the transfer is complete.

Parts of the unit are magnetic. The unit can attract metal objects. Do not keep credit cards or other magnetic media near the unit. There is a risk that information stored on them can be erased.

5. SAFETY INSTRUCTIONS

Medical units

The use of equipment that transmits radio signals, for example, mobile phones, can interfere with insufficiently protected medical equipment. Consult a doctor or the manufacturer of the equipment to determine if it has adequate protection against external radio signals, or if you have any questions.

Comply with any notices at health care facilities instructing you to turn off the unit while you are there. Hospitals and other health care facilities sometimes use equipment that can be sensitive to external radio signals.

Pacemakers

The Health Industry Manufacturers Association recommends that a minimum separation of be maintained between a handheld wireless phone and a pacemaker to avoid potential interference with the pacemaker. Persons with pacemakers:

- Should always keep the phone more than 6 inches (15 cm) from their pacemaker when the phone is turned on.
- Should not carry the phone in a breast pocket.
- Should use the ear opposite the pacemaker to minimize the potential for interference.

If you have any reason to suspect that interference is taking place, turn the phone off immediately.

Areas with explosion risk

Always turn off the unit when you are in an area where there is a risk of explosion, typically these are areas where you normally requested to turn off your car engine. Follow all signs and instructions.


In these areas, sparks can cause explosion or fire that can lead to personal injury or even death.

Turn off the unit at filling stations, and any other place that has gas pumps and auto repair facilities.

Follow the restrictions that apply to the use of radio equipment near places where fuel is stored and sold, chemical factories and places where blasting is in progress.

Areas with risk for explosion are often – but not always – clearly marked. This also applies to below decks on ships; the transport or storage of chemicals; vehicles that use liquid fuel (such as propane or butane); areas where the air contains chemicals or particles, such as grain, dust or metal powder.

Protect your hearing



WARNING:
Excessive exposure to loud sounds can cause hearing damage.
Exposure to loud sounds while driving may distract your attention and cause an accident.
Listen to a headset at a moderate level, and do not hold the device near your ear when the loudspeaker is in use.

Emergency calls

Important!
Mobile phones such as this unit use radio signals, the mobile phone network, the terrestrial network and user-programmed functions. This means that connection cannot be guaranteed in all circumstances. Therefore, you should never rely solely on a mobile phone for very important calls such as medical emergencies.

6. SAFETY INSTRUCTIONS

Vehicles

Radio signals can affect electronic systems in motor vehicles (for example, electronic fuel injection, ABS brakes, automatic cruise control, air bag systems) that have been incorrectly installed or are inadequately protected. Contact the manufacturer or its representative for more information about your vehicle or any additional equipment.

Do not keep or transport flammable liquids, gases or explosives together with the unit or its accessories. For vehicles equipped with air bags: Remember that air bags fill with air with considerable force.

Do not place objects, including fixed or portable radio equipment in the area above the airbag or the area where it might expand. Serious injuries may be caused if the mobile phone equipment is incorrectly installed and the airbag fills with air.

It is prohibited to use the unit while in flight. Turn off the unit before you board a plane. Using wireless telecom units inside a plane can pose risks to air safety and interfere with telecommunications. It may also be illegal.

Driving safely

Adapted from CTIA-The Wireless Association®

Warning!
Use of this unit alone or with headphones (even if used only in one ear) while driving a motor vehicle or riding a bicycle is dangerous and is illegal in some areas, and the user should not engage in such conduct. Driving while operating a mobile phone is distracting and could cause serious injury or death.

If you use this unit while driving or riding a bicycle, keep in mind the following guidelines:

- **Give full attention to driving and to the road.**
Using a mobile device while driving may be distracting. If you find it disruptive or distracting while operating any type of vehicle, riding a bicycle, or performing any activity that requires your full attention, pull off the road and park before making or answering a call.
- **Get to know your phone and its features such as phone book, call memory, and speakerphone.**
These features help you to place your call without taking your attention off the road. See the applicable portion of this user’s guide for more information.
- **Use a hands-free device.**
Add an extra layer of convenience and safety to your unit with one of the many hands-free accessories available. Use of a headset or other hands-free device may be legally required. Several states have in recent years passed laws making it unlawful to operate a motor vehicle while talking on a wireless phone without use of a headset, speakerphone, or other hands-free device. County and municipal ordinances may also limit or ban wireless conversations for automobile drivers. Check the status of such laws in your area and in locations to which you travel by car. For SMS text messaging, it is a recommended safety practice that you never send or view received text messages while driving; in California, and likely

other states in the future, SMS messaging by a driver is also a legal violation.

- **Position phone within easy reach.**
Keep your eyes on the road. If you get an incoming call at an inconvenient time, let your voice mail answer it for you.

7. SAFETY INSTRUCTIONS

- **Assess the traffic before dialing, or place calls when you are not moving or before pulling into traffic.**
Try to plan calls when your car will be stationary. Never dial, send SMS text messages, or enter other text while you are driving.
- **Let the person you are speaking with know you are driving.**
If necessary, suspend the call in heavy traffic or hazardous weather conditions. Driving in rain, sleet, snow, ice, fog, and even heavy traffic can be hazardous.
- **Do not take notes, look up phone numbers, or perform any other activities that require your attention while driving.**
Jotting down a to-do list or flipping through your address book takes attention away from your primary responsibility, driving safely.
- **Do not engage in stressful or emotional conversations that may be distracting.** Make people you are talking with aware you are driving and suspend conversations that have the potential to divert your attention from the road.

RF exposure information (SAR)

This model phone meets the government’s requirements for exposure to radio waves.

This phone is designed and manufactured not to exceed the emission limits for exposure to radio frequency (RF) energy set by the Federal Communications Commission of the U.S. Government.

The exposure standard for wireless mobile phones employs a unit of measurement known as the Specific Absorption Rate, or SAR. The SAR limit set by the FCC is 1.6W/kg. *Tests for SAR are conducted using standard operating positions accepted by the FCC with the phone transmitting at its highest certified power level in all tested frequency bands. Although

the SAR is determined at the highest certified power level, the actual SAR level of the phone while operating can be well below the maximum value. This is because the phone is designed to operate at multiple power levels so as to use only the power required to reach the network. In general, the closer you are to a wireless base station antenna, the lower the power output.

The highest SAR value for the model phone as reported to the FCC when tested for use at the ear is 1.06 W/kg and when worn on the body, as described in this user guide, is 0.68 W/kg (Body-worn measurements differ among phone models, depending upon available enhancements and FCC requirements.) While there may be differences between the SAR levels of various phones and at various positions, they all meet the government requirement.

The FCC has granted an Equipment Authorization for this model phone with all reported SAR levels evaluated as in compliance with the FCC RF exposure guidelines. SAR information on this model phone is on file with the FCC and can be found under the Display Grant section of <http://www.fcc.gov/oet/ea/fccid> after searching on **FCC ID: WS5DOR0626**.

For body worn operation, this phone has been tested and meets the FCC RF exposure guidelines for use with an accessory that contains no metal and the positions the handset a minimum of 1.5 cm (5/8 inch) from the body. Use of other enhancements may not ensure compliance with FCC RF exposure guidelines.

If you do no t use a body-worn accessory and are not holding the phone at the ear, position the handset a minimum of 1.5 cm (5/8 inch) from your body when the phone is switched on.

*In the United States and Canada, the SAR limit for mobile phones used by the public is 1.6 watts/kilogram (W/kg) averaged over one gram of tissue. The standard incorporates a substantial margin of safety to give additional protection for the public and to account for any variations in measurements. SAR values may vary depending on national reporting requirements and the network band.

8. SAFETY INSTRUCTIONS

IC Radiation Exposure Statement

This EUT is compliance with SAR for general population/ uncontrolled exposure limits in IC RSS-102 and had been tested in accordance with the measurement methods and procedures specified in IEEE 1528 and IEC 62209. This equipment should be installed and operated with minimum distance 1.5 cm between the radiator and your body. This device and its antenna(s) must not be co-located or operating in conjunction with any other antenna or transmitter.

Cet appareil est conforme aux limites d’exposition DAS inconntrôlée pour la population générale de la norme CNR-102 d’Industrie Canada et a été testé en conformité avec les méthodes de mesure et procédures spécifiées dans IEEE 1528 et IEC 62209.

Cet appareil doit être installé et utilisé avec une distance minimale de 1,5 cm entre l’émetteur et votre corps. Cet appareil et sa ou ses antennes ne doivent pas être co-localisés ou fonctionner en conjonction avec tout autre antenne ou transmetteur.

Hearing aid compatibility

Note! For hearing aid compatibility, you should turn off the Bluetooth connectivity.

Your mobile device model complies with FCC rules (C63.19-2007) governing hearing aid compatibility. These rules require an M3 microphone or higher value. The M-value, shown on the device box and below, refers to lower radio frequency (RF) emissions. A higher M-value generally indicates that a device model has a lower RF emissions level, which may improve the likelihood that the device will operate with certain hearing aids. Some hearing aids are more immune than others are to interference. Please consult your hearing health professional to determine the M rating of your hearing aid and whether your hearing aid will work with this device.

Your device meets the M3/T4 level rating.

TTY compatibility

This unit does not support TTY signaling. If you intend to connect a TTY to the unit, this unit should not be purchased and, if already purchased, it should be returned for a refund.

9. CARE AND MAINTENANCE

Your unit is a technically advanced product and should be treated with the greatest care. Negligence may void the warranty.

- Protect the unit from moisture. Rain/snowfall, moisture and all types of liquid can contain substances that corrode the electronic circuits. If the unit gets wet, you should remove the battery and allow the unit to dry completely before you replace it.
- Do not use or keep the unit in dusty, dirty environments. The unit’s moving parts and electronic components can be damaged.
- Do not keep the unit in warm places. High temperatures can reduce the lifespan for electronic equipment, damage batteries and distort or melt certain plastics.
- Do not keep the unit in cold places. When the unit warms up to normal temperature, condensation can form on the inside which can damage the electronic circuits.
- Do not try to open the unit in any other way than that which is indicated here.
- Do not drop the unit. Do not knock or shake it either. If it is treated roughly the circuits and precision mechanics can be broken.
- Do not use strong chemicals to clean the unit.

10. CARE AND MAINTENANCE


- Do not disassemble or open crush, bend or deform, puncture or shred.
- Do not modify or remanufacture, attempt to insert foreign objects into the battery, immerse or expose to water or other liquids, expose to fire, explosion or other hazard.
- Only use the battery for the system for which it is specified.
- Only use the battery with a charging system that has been qualified with the system per IEEE-Std- 1725. Use of an unqualified battery or charger may present a risk of fire, explosion, leakage, or other hazard.
- Do not short circuit a battery or allow metallic conductive objects to contact battery terminals.
- Replace the battery only with another battery that has been qualified with the system per this standard, IEEE-Std-1725. Use of an unqualified battery may present a risk of fire, explosion, leakage or other hazard.
- Promptly dispose of used batteries in accordance with local regulations.
- Battery usage by children should be supervised.
- Avoid dropping the phone or battery. If the phone or battery is dropped, especially on a hard surface, and the user suspects damage, take it to a service center for inspection.
- Improper battery use may result in a fire, explosion or other hazard.

For those host devices that utilize a USB port as a charging source, the host device’s user manual shall include a statement that the device shall only be connected to CTIA certified adapters, products that bear the USB-IF logo or products that have completed the USB-IF compliance program.

The advice above applies to the unit, battery, AC power adapter and other accessories. If the phone is not working as it should, please contact Consumer Cellular for service. Don’t forget the receipt or a copy of the invoice.

Battery disposal and recycling information

When the battery in this unit has reached the end of its useful life, please dispose of it according to your local environmental laws and regulations. For information about recycling cell phone batteries, go to: <http://www.rbrc.org>

 The symbol to the left means that according to local laws and regulations your product should be disposed of separately from household waste. When the battery in this unit has reached the end of its useful life, take it to a collection point designated by local authorities. Some collection points accept products for free. The separate collection and recycling of your unit will help conserve natural resources and ensure that it is recycled in a manner that protects human health and the environment.

11. WARRANTY AND TECHNICAL DATA

This product is guaranteed for a period of 12 months from the date of purchase. In the unlikely event of a malfunction occurring during this period, please contact Consumer Cellular. Proof of purchase is required for any service or support needed during the guarantee period.

This guarantee will not apply to a malfunction caused by an accident or a similar incident or damage, liquid penetration, negligence, abnormal usage, non-maintenance or any other circumstances on the user’s part. Furthermore, this guarantee will not apply to any malfunction caused by a thunderstorm or any other voltage fluctuations. As a matter of precaution, we recommend disconnecting the charger during a thunderstorm.

Batteries are consumables and are not included in any guarantee.

This guarantee does not apply if batteries other than DORO original batteries are used.

Note! This guarantee does not affect your legal (statutory) rights under your applicable national laws relating to the sale of consumer products.

Copyright and other notices

Consumer Cellular and the Consumer Cellular logo are trademarks of Consumer Cellular, Inc.

Bluetooth® is a registered trademark of Bluetooth SIG, Inc.

vCard is a trademark of the Internet Mail Consortium.

eZiType™ is a trademark of Zi Corporation.

vCard is a trademark of the Internet Mail Consortium.

Wi-Fi is a trademark or a registered trademark of the Wi-Fi Alliance.

microSD is a trademark of SD Card Association.

Java, J2ME and all other Java-based marks are trademarks or registered trademarks of Sun Microsystems, Inc. in the United States and other countries.

The contents of this document are provided “as is”. Except as required by applicable law, no warranties of any kind, either express or implied, including, but not limited to, the implied warranties of merchantability and fitness for a particular purpose, are made in relation to the accuracy, reliability or contents of this document. Doro reserves the right to revise this document or withdraw it at any time without prior notice.

Google, Google Maps™, Gmail, Google Calendar, Google Checkout, Hangouts, YouTube, the YouTube logo, Picasa and Android are trademarks or registered trademarks of Google, Inc.

This product is licensed under the MPEG-4 visual and AVC patent portfolio licenses for the personal and noncommercial use of a consumer for (i) encoding video in compliance with the MPEG-4 visual standard (“MPEG-4 video”) or the AVC standard (“AVC video”) and/or (ii) decoding MPEG- 4 or AVC video that was encoded by a consumer engaged in a personal and non-commercial activity and/or was obtained from a video provider licensed by MPEG LA to provide MPEG-4 and/ or AVC video. No license is granted or shall be implied for any other use. Additional information including that relating to promotional, internal and commercial uses and licensing may be obtained from MPEG LA, L.L.C. See www.mpegla.com. MPEG Layer-3 audio decoding technology licensed from Fraunhofer IIS and Thomson.

Other product and company names mentioned herein may be the trademarks of their respective owners.

Any rights not expressly granted herein are reserved. All other trademarks are property of their respective owners.

To the maximum extent permitted by applicable law, under no circumstances shall Doro or any of its licensors be responsible for any loss of data or income or any special, incidental, consequential or indirect damages howsoever caused.

Doro does not provide a warranty for or take any responsibility for the functionality, content, or end-user support of third-party apps provided with your device. By using an app, you acknowledge that the app is provided as is. Doro does not make any representations, provide a warranty, or take any responsibility for the functionality, content, or enduser support of third-party apps provided with your device.

Content copyright

The unauthorised copying of copyrighted materials is contrary to the provisions of the Copyright Laws of the United States and other countries. This device is intended solely for copying non-copyrighted materials, materials in which you own the copyright, or materials which you are authorised or legally permitted to copy. If you are uncertain about your right to copy any material, please contact your legal advisor.

Support

For assistance, please contact:

Email: service@ConsumerCellular.com
Website: www.ConsumerCellular.com/support
Telephone: (888) 345-5510

Need to test your cell phone?

At anytime you can place a mobile phone test call to our FREE test line by dialing (888) 460-8781 from your cellular phone. If the call is completed correctly you will hear a recorded message telling you that your mobile phone is working.

Check your minutes or change your plan.

With Consumer Cellular you are in control and can change your plan at any time. To check your usage and change your plan just go to My Account at www.ConsumerCellular.com Or call (888) 373-1777 any time. The call is free.

Specifications

Network:	WCDMA 850/1900 MHz, GSM 850/1800/1900 MHz
Dimensions:	102 mm x 52 mm x 19 mm
Weight:	104 g (including battery)
Battery:	3.7 V / 800 mAh Li-ion battery
Operating ambient temperature	Min: 32° F (0° C) Max: 104° F (40° C)
Charging ambient temperature	Min: 32° F (0° C) Max: 104° F (40° C)
Storage temperature	Min: –4° F (–20° C) Max: 140° F (60° C)

© 2014 Doro AB. All rights reserved.

FCC ID: WS5DOR0626

PhoneEasy 626 (1021)

English QSG

Version 2.0

www.doro.com

