

WPM-400 Wireless In-Ear Monitoring Earphones

■ Preface

Dear Customer,

Thank you for purchasing Takstar WPM-400 Wireless In-Ear Monitoring Earphones. In order to better understand and use the product, please read this manual carefully. If you have any questions or suggestions, please contact our local dealer.

■ Features

- Multi-functional wireless in-ear monitoring earphones, suitable for entertainment stream, livestream e-commerce and music appreciation.
- One-key switch between Monitoring and TWS modes to suit for various applications.
- 2.4GHz wireless transmission up to about 10m, quick pairing, auto reconnecting.
- Professional-grade monitoring, low latency without audio delay for smoother streaming and interaction.
- In-ear design, compact and comfortable to wear, carry music with you as you move around.
- Charging case and transmitter integrated in one, super-portable, supports wired or wireless charging.
- Transmitter uses supplied Type-C to ø3.5mm cable for easy connection with audio device like audio interface or mixer.
- Built-in Li-ion battery lasts up to 6hrs continuously.

■ Package Contents

Charging Case (Transmitter)	1 pc
Wireless Earphones	2 pcs
Charging Cable	1 pc
Audio Cable	1 pc
Ear Tips (S/M/L)	3 prs
User Manual	1 pc

■ Applications

Suitable for entertainment stream, livestream e-commerce, music appreciation.

■ Specifications

Charging Case Specifications

- Battery Capacity: 700mAh
- Charging Time (Wired): approx. 2hrs
- Charging Time (Wireless): approx. 6hrs
- Battery Life: 4 full charges (both earphones)
- Case Dimensions: 65.6*54*32mm
- Case Weight: approx. 57g
- Operating Temperature: -10°C~50°C
- Storage Temperature: 10°C~50°C
- Input Voltage: 5V
- Charge Current: 445mA (maximum)
- Temperature Control: auto disconnect charging at around 55°C

WPM-400 Wireless In-Ear Monitoring Earphones

Earphones Specifications

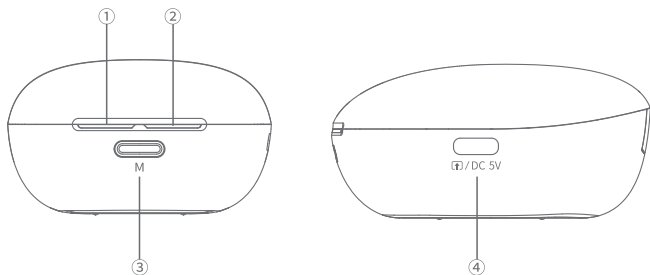
- Battery Capacity: 70mAh
- Frequency Response: 20Hz-20KHz
- Sensitivity: 115dB
- Earphone Dimensions: 35.75*22.23*20.24mm
- Single Earphone Weight: approx. 7g
- Transmission Frequency: 2.4GHz
- Earphones Charging Time: approx. 70min
- Charging Voltage/Current: DC 5V/700mAh
- Operating Temperature: -10°C~50°C
- Storage Temperature: 10°C~60°C
- Low Latency Distance: $\geq 7m$
- TWS Mode Battery Life:
 - Phone Call: approx. 5hrs for both earphones
 - Continuous Music Playback: approx. 7hrs (at 80% volume)
 - Standby Battery Life: approx. 120hrs
- Monitoring Mode Battery Life:
 - Continuous Music Playback with connected audio interface: approx. 6hrs (at 80% volume)
 - Standby Battery Life: approx. 7hrs

Note: The above data is measured by Takstar laboratory, and Takstar has the final interpretation right!

■ Function Descriptions

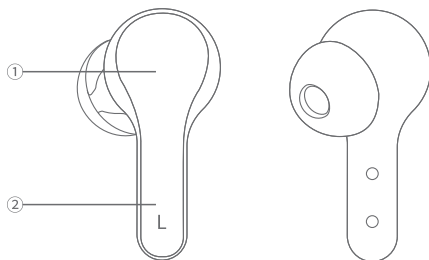
Charging Case (Transmitter):

- ① Battery LED: shows battery level.
- ② Work Mode LED: shows TWS pairing status or Monitoring status.
- ③ Mode Button: double-click to switch between TWS and Monitoring modes.
- ④ Type-C Interface: for charging the case via Type-C charging cable, or for connecting audio device via supplied audio adapter cable.



Earphones (Receivers):

- ① Touch Area: for controlling music playback, answering/rejecting/ending calls.
- ② LED Dot: lights up for 3s when powered on, then goes off into pairing status; flashes when earphone battery is low; lights up for 3s on the right earphone then goes off upon auto power-off when placed into charging case.



■ Operation Instructions

I. Power Detection:

- ① Normal power level for both earphones and the case: left LED turns green for 3s when case lid opens.
- ② Low power level for either earphones or the case: left LED turns red for 3s when case lid opens.

Note: When case lid is closed, click the button on the case to check power level.

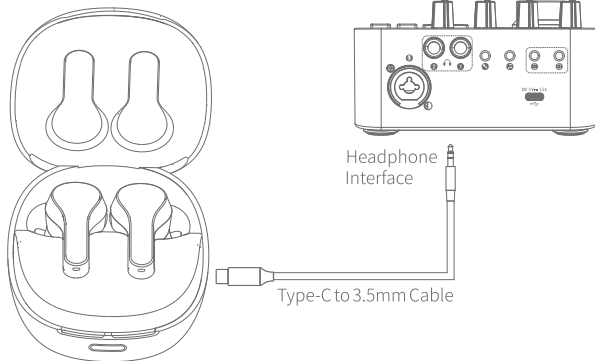
II. Place-back Detection (in charging case):

- ① Left earphone placed: left LED lights up green for 1s then goes off.
- ② Right earphone placed: left LED lights up green for 1s then goes off.
- ③ Both earphones placed: left LED shows green twice, each for 1s then goes off.

WPM-400 Wireless In-Ear Monitoring Earphones

III. Live Stream Monitoring (as shown in diagram):

* Illustrated model is Takstar MX1 Pro Mixer



Transmitter/Charging Case

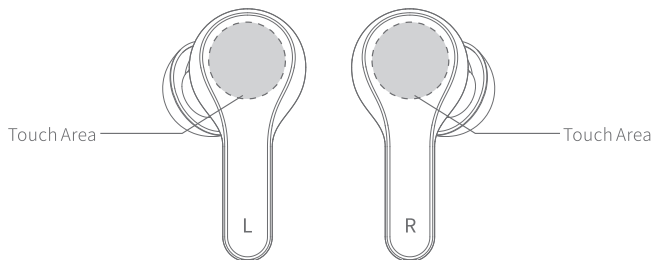
- 1) Use the supplied audio adapter cable, connect the device with audio interface as shown in the above figure.
- 2) The first time you open the case lid, the device shows power level then enters Monitoring mode by default. Open the charging case, the right LED on the case turns blue permanently, take out the earphones to start monitoring.
- 3) Mode Memory function: retains previously used mode before last power-off.

IV. Switch TWS/Monitoring Mode:

- 1) Under Monitoring mode, place the earphones (either or both) into the charging case, then double-click the case button to enter TWS mode, indicated by the right LED flashing blue.
- 2) Under TWS mode, place the earphones (either or both) into the charging case, then double-click the case button to enter Monitoring mode, indicated by the right LED staying blue.

WPM-400 Wireless In-Ear Monitoring Earphones

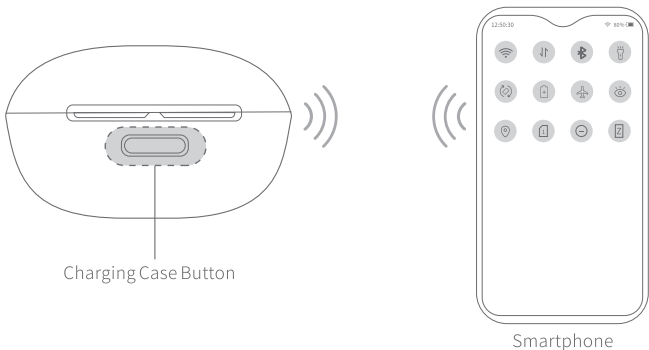
V. Smart Touch Control:



- ① Earphone Call Notification: same as your phone's ringtone.
- ② Answer/End Call: tap the touch area on either earphone.
- ③ Reject Call: touch and hold the touch area on either earphone for 1.5s.
- ④ Play/Pause: tap the touch area on either earphone.
- ⑤ Previous Track: double-tap the touch area on the left earphone.
- ⑥ Next Track: double-tap the touch area on the right earphone.
- ⑦ When using only one earphone, double-tap on the in-use earphone switches to Next Song only.
- ⑧ Voice Assistant: touch and hold the touch area on either earphone for 2s until you hear "Du".
- ⑨ Stereo/Single Mode Switch: use both or either earphone freely. The earphones auto reconnect and pair in seconds.
- ⑩ Change Name: find the wireless device settings in your phone, tap on the device name, proceed to edit and enter a new name to rename the device.
- ⑪ Power-off: touch and hold the touch area for 6s on the left/right earphone until you hear shutdown notification "Du".
- ⑫ The earphones auto power off when placed into the charging case and the lid is closed (provided the charging case battery is not out).
- ⑬ The earphones auto power off when disconnected for more than 3 minutes.

WPM-400 Wireless In-Ear Monitoring Earphones

1. TWS Connection



1) The earphones start in Monitoring mode by factory default. To switch to TWS mode, place the earphones back in the charging case and double-click the case button, the right LED on the case will flash to indicate TWS mode.

2) Turn on your phone, go to settings, enable wireless connection and search for a device named "TAKSTAR WPM-400", tap it to connect.

Note: When connected to iPhones via Bluetooth, the phone status bar will show earphones battery level aside the Bluetooth icon.

VI. Prompt Tone Descriptions:

Power-on: /

Power-off: "Du~" (long tone)

Stereo pairing success: "Du"

Connected: "Du ↗" (rising tone)

Disconnected: "Du ↘" (falling tone)

Low battery: "Du Du"

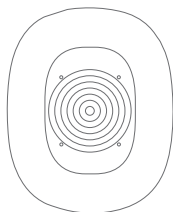
VII. Clear Pairing:

Open the charging case lid, press and hold the case button for 8s until the LED dots on both earphones light up for 2s to clear the pairing history.

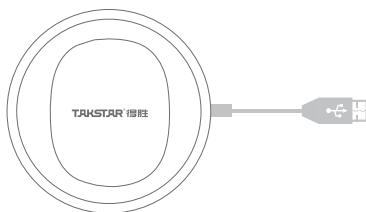
WPM-400 Wireless In-Ear Monitoring Earphones

VIII. Charge the Charging Case:

1) Wireless Charging:



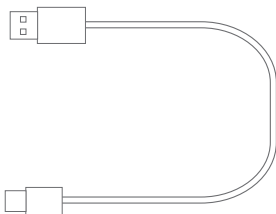
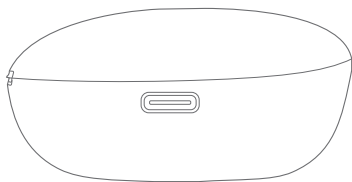
Wireless Charging Area



Please place the charging case in the center of the wireless charging area

Note: To ensure normal functionality, please use a wireless charging device that meets Qi standard for charging.

2) Wired Charging:



Note: To ensure normal functionality, please use the supplied charging cable to connect the case with power supply for charging.

WPM-400 Wireless In-Ear Monitoring Earphones

Charging Indicator on Charging Case

Work Status		LED Description
Power adapter disconnected	Charge both earphones in charging case	Left LED flickers red, then turns off when fully charged
	Charge single earphone in charging case	Under TWS mode (right LED flickers blue), left LED flickers red, then turns off when fully charged
		Under Monitoring mode (right LED stays blue), left LED flickers red, then turns off when fully charged
Power adapter connected	Charge the case only (w/o earphones)	Left LED flickers red, then turns solid green when fully charged
	Charge both earphones in charging case	Left LED flickers red, then turns solid green when fully charged
	Charge single earphone in charging case	Under TWS mode (right LED flickers blue), left LED flickers red, then turns solid green when fully charged
		Under Monitoring mode (right LED stays blue), left LED flickers red, then turns solid green when fully charged

■ Safety Instructions

To avoid electric shock, overheat, fire, radiation, explosion, mechanical risk and injury or property loss due to improper use, please read and observe the following items before use:

1. Please check if the power of the connected equipment matches with that of this product before operation. Adjust the volume to proper level during operation. Do not operate at over-power or high-volume level for extended time to avoid product malfunction or hearing impairment.
2. If there is any abnormality during use (e.g., smoke, strange odor), please kill the power switch and unplug from power source, then send the product to the local dealer for repair.
3. Keep this product and its accessories in a dry and ventilated area. Do not store in a humid or dusty area for extended time. Keep away from fire, rain, liquid intrusion, bumping, throwing, vibrating, or from blocking any ventilation openings, to prevent malfunction.
4. Please abide by safety rules during operation. Do not use the product in places prohibited by laws or regulations to avoid accident.
5. Do not disassemble or repair the product by yourself to avoid injury. If you have any questions or require any services, please contact our local dealer.