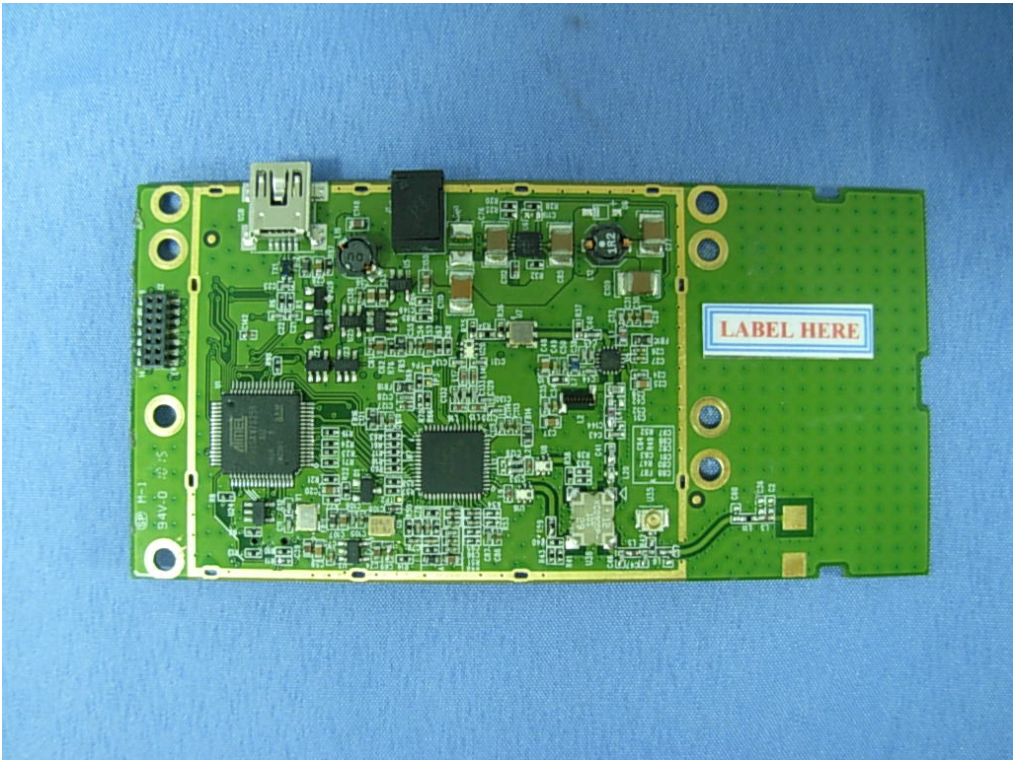


FCC ID Label



The Label of FCC ID number will be placed on the RF module as shown in the photograph below:

FCC ID : WQH-UEE007

The FCC ID Label will be placed on the user manual as shown in the photograph below:

UHF USB Reader Module Model No.: UEE005
FCC ID : WQH-UEE007
This device complies with Part 15 of the FCC Rules. Operation is subject to the following two conditions: (1) this device may not cause harmful interference and (2) this device must accept any interference received, including interference that may cause undesired operation. S/N: Made in Taiwan