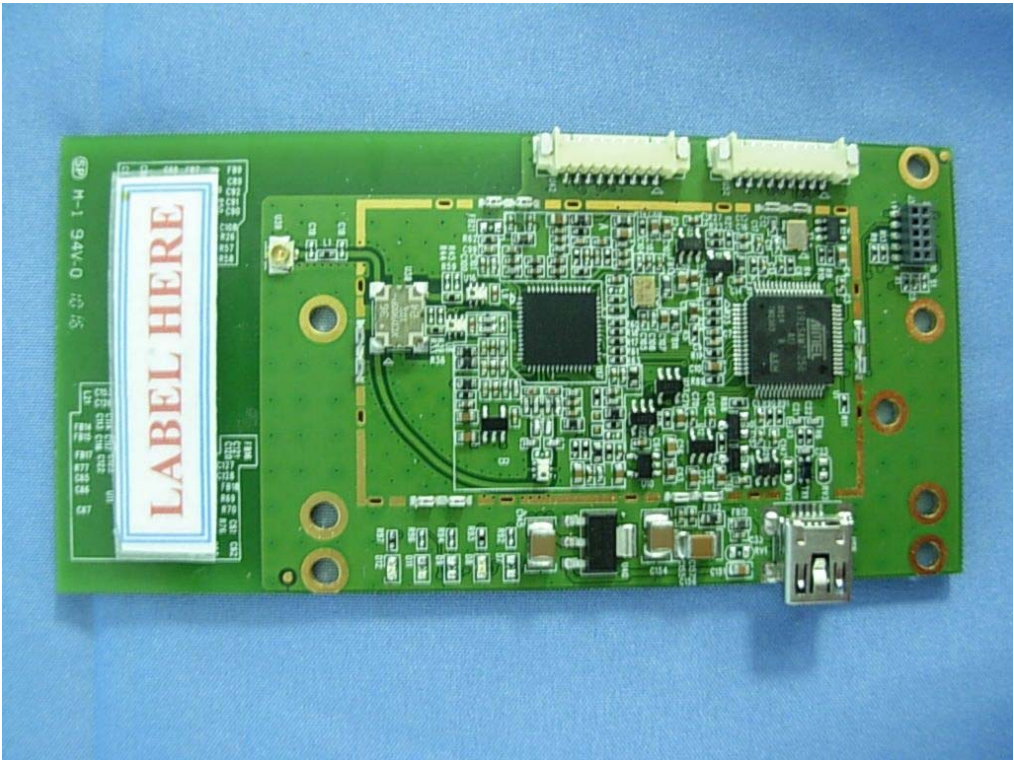


FCC ID Label



The Label of FCC ID number will be placed on the RF module as shown in the photograph below:

<b>FCC ID : WQH-UEE006</b>
----------------------------

The FCC ID Label will be placed on the user manual as shown in the photograph below:

<b>UHF USB Reader Module</b> <b>Model No.: UEE006</b>
<b>FCC ID : WQH-UEE006</b>
This device complies with Part 15 of the FCC Rules. Operation is subject to the following two conditions: (1) this device may not cause harmful interference and (2) this device must accept any interference received, including interference that may cause undesired operation. S/N: Made in Taiwan