

# Contents

<b>1</b>	<b>GENERAL NOTICE .....</b>	<b>1</b>
<b>2</b>	<b>INTRODUCTION.....</b>	<b>2</b>
	WIRELESS COMMUNICATION.....	3
	USB CONNECTIVITY.....	3
	POWER SOURCE.....	3
<b>3</b>	<b>FUNCTIONAL DESCRIPTION .....</b>	<b>4</b>
	STATUS LEDs .....	5
	VEHICLE DATA CONNECTOR.....	6
	USB PORT .....	6
	TECHNICAL SPECIFICATIONS.....	6
	CAPABILITIES.....	7
<b>4</b>	<b>PRODUCT TROUBLESHOOTING .....</b>	<b>8</b>
	VEHICLE LINKING ERROR .....	8
	PC COMMUNICATION ERROR .....	8
<b>5</b>	<b>DRIVER SETUP.....</b>	<b>9</b>
<b>6</b>	<b>FIRMWARE UPDATE .....</b>	<b>12</b>
	UPDATE ONLINE .....	12
<b>7</b>	<b>COMPLIANCE INFORMATION.....</b>	<b>14</b>
<b>8</b>	<b>WARRANTY AND SERVICE.....</b>	<b>16</b>
	LIMITED ONE YEAR WARRANTY .....	16
	SERVICE INFORMATION .....	16

# 1 General Notice

The wireless diagnostic interface MaxiVCI Mini has been carefully designed and tested to comply with OBD II protocols. However, some vehicle models are not in full compliance with these protocols for various reasons. In addition, the computer control systems or sensors on any given vehicle may be malfunctioning.

While Autel's testing and the experiences of the users have shown the unit to be safe and reliable, there is an inherent risk in using any product that may potentially affect the operation or drive-ability of your vehicle.

If you are concerned about the operation of your vehicle at any time while using the MaxiVCI Mini:

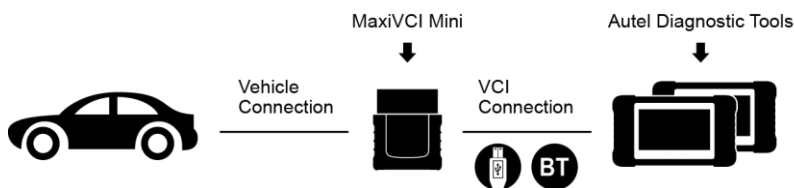
- Pull off the roadway immediately or as soon as it is safe to do so.
- Disconnect the device from the OBD II port.
- Consult a licensed mechanic or automobile service center.

Contact your local distributor, or visit [www.autel.com](http://www.autel.com) for issues or concerns about the product. We maintain an active database of the feedback we received, and your comments can help us continuously improve the product.

# 2 Introduction

The wireless diagnostic interface MaxiVCI Mini is a small interface box used to connect to a vehicle's diagnostic connector (DLC) and connect wirelessly with some Autel Diagnostic Tools including MaxiCheck MX808TS and MaxiTPMS TS608, as well as standalone PC, as a vehicle communication interface (VCI) for vehicle data transmission. Thanks to the wireless BT technology, with which you are allowed to work freely around the vehicle.

The MaxiVCI Mini can communicate with vehicles' electronic control units (ECUs), guaranteeing performance and speed that redefine multi-brand diagnostics. The development of this interface has been focused on reducing the communication time and ensuring the tool is practical to use.



**Figure 2-1** *MaxiVCI Mini Communication Platform*

The MaxiVCI Mini Communication Platform combines the MaxiVCI Mini and the display tablet with technical information into a single program, ensuring quick and simple access to the vehicle to perform comprehensive diagnostics applications.

## Wireless Communication

---

The MaxiVCI Mini supports BT communication. It can transmit vehicle data to some Autel Diagnostic Tools including MaxiCheck MX808TS and MaxiTPMS TS608 without a physical connection. The working range of the transmitter through BT communication is about 33 feet (about 10 m). A signal lost due to moving out of range automatically restores itself when the display unit is brought closer to the MaxiVCI Mini unit.

## USB Connectivity

---

The MaxiVCI Mini also provides a direct connection to some Autel Diagnostic Tools including MaxiCheck MX808TS and MaxiTPMS TS608 or a PC via a USB 2.0 full-speed connection. All of the electronics are contained in the device shell, making it a compact and rugged vehicle communication tool.

## Power Source

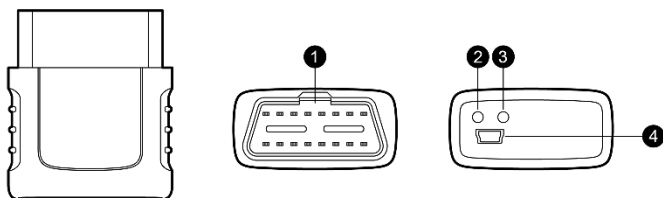
---

The MaxiVCI Mini operates on 12-volt vehicle power, which it receives through the vehicle data connection port. The unit powers on whenever it is connected to an OBD II/EObD compliant data link connector (DLC).

It can also be powered through connection with a PC via the USB cable, so there's no need to connect the device to the vehicle when performing firmware update through the PC.

# 3 Functional Description

The MaxiVCI Mini device package includes the unit, user manual, and a CD with driver program and update agent.



**Figure 3-1** *Product View*

1. Vehicle Data Connector (16-Pin)
2. Power LED: The power LED illuminates solid green when the device is power up and operates normally, it will illuminate solid red if the device is not operating normally;
3. Connection LED: The connection LED illuminates solid green when the device is successfully connected via USB cable but no communication with the vehicle, it flashes green when the device is successfully connected via USB cable and there is communication with the vehicle; the connection LED illuminates solid blue when the device is successfully connected via BT but no communication with the vehicle, it flashes blue when the device is successfully connected via BT and there is communication with the vehicle.
4. USB Port

# Status LEDs

---

There are 2 status LEDs on the front panel of the MaxiVCI Mini, which indicates its working status as well as the hardware conditions, and are very useful for troubleshooting the device's communication or connection to the vehicle, display tablet and/or the PC. See table 3-1 for detailed description of the status LEDs.

**Table 3-1** *Status LEDs on the Front Panel*

LED	Color	Description
Power	Green	Illuminates solid green when powered on.
	Red	Flashes red when system failure occurs.  <i>Note: The power LED illuminates red automatically every time when the device is powered up, which is a normal self-test procedure, and it will turn green automatically later when the device starts working normally.</i>
Connection	Green	Illuminates solid green when properly connected with the display tablet or the PC via the USB cable
	Blue	Illuminates solid blue when connected with the display tablet via wireless (BT) connection

# Vehicle Data Connector

---

The vehicle connector connects the MaxiVCI Mini to the vehicle's 16-pin DLC directly.

## USB Port

---

The USB port provides the easiest connection between the device and the display tablet or the PC via a USB cable, and is used to control the device from the software application running on the PC.

## Technical Specifications

---

**Table 3-2** *Specifications*

Item	Description
Communications	<ul style="list-style-type: none"><li>• BT V.2.1 + EDR</li><li>• USB 2.0</li></ul>
Wireless Frequency	2.4 GHz
Input Voltage Range	12 VDC
Supply Current	150 mA @ 12 VDC
Operating Temperature	0°C to 50°C (ambient)
Storage Temperature	-20°C to 70°C (ambient)
Dimensions (L x W x H)	47 mm (1.7") x 23 mm (0.9") x 51 mm (2.0")
Weight	33.1g (0.07 lb.)

# Capabilities

---

When used in conjunction with the display table or the OEM softwares from the PC, the MaxiVCI Mini is able to perform the following functions:

- Auto diagnostics to read and clear the error memory, to display system parameters and the status of the ECU;
- Activation, adjustments and configurations that are essential for ensuring a complete repair;
- Resetting the service lights or the airbag systems;
- Configuration of the ECUs, keys and remote controls, etc.



# 4 Product Troubleshooting

This part describes problems that you may encounter while using the MaxiVCI Mini.

## Vehicle Linking Error

---

A communication error occurs if the MaxiVCI Mini fails to communicate with the vehicle's control module when performing diagnostic procedures. You need to do the following check-ups:

- ✓ Verify that the ignition is ON.
- ✓ Check if the device's vehicle data connector is securely connected to the vehicle's DLC.
- ✓ Turn the ignition off and wait for about 10 seconds. Turn the ignition back to on and continue the operation.
- ✓ Verify the control module is not defective.

## PC Communication Error

---

- ✓ Verify the interface device is powered, and the power LED is illuminated green.
- ✓ Check if there is any firewall software interfering with the connection port.
- ✓ Check if the green status light is illuminated for USB communication.
- ✓ If these issues have been addressed, verified, and you are still having trouble, please contact technical supports for assistance.

# 5 Driver Setup

In order for the MaxiVCI Mini to operate correctly with the diagnostic applications on the PC, you will need to first install the device's driver onto the PC that controls the device.

The program package requires Windows XP, Windows 7 (32 or 64 bit), Windows 8 (32 or 64 bit), or Windows 10 (32 or 64 bit).

---

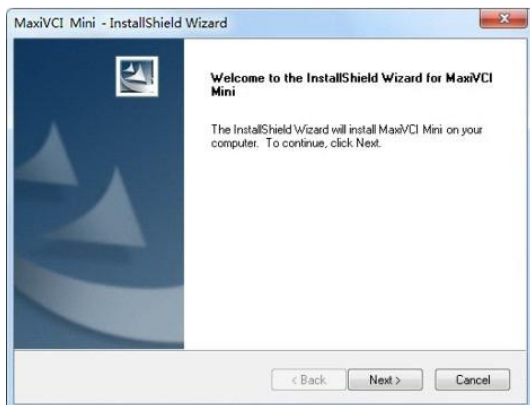
## ! IMPORTANT

Do not plug the MaxiVCI Mini onto the PC until you have installed the driver program.

---

The following steps may vary depending on the operating system or components that are installed on your computer, but in general this is the standard installation process.

1. Insert the included CD into the CD/DVD slot of the PC and open the CD folder.
2. Double click on “**Autel Run.exe**” item.
3. Click the MaxiVCI Mini icon in the MaxiSys PC Suite screen.
4. Select the installation language and the driver installation wizard will load momentarily.
5. Follow the wizard instructions on the screen and click “**Next**” to continue.



**Figure 5-1** *Sample Installation Step 1*

6. Click on “**Install**” and the driver program will be installed onto your PC.



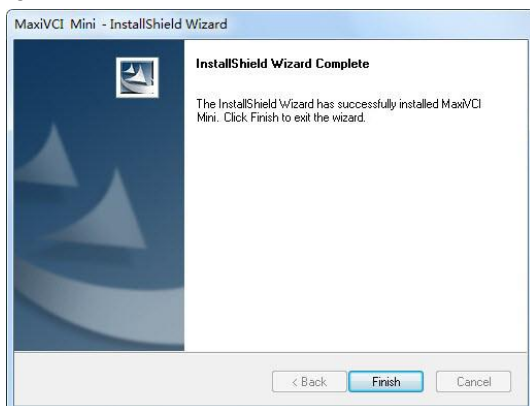
**Figure 5-2** *Sample Installation Step 2*



#### **NOTE**

During this part of the process a MS-DOS style window may pop up and may remain on your screen for a short while, which is perfectly normal. Do not attempt to close the MS-DOS style window manually as this will prevent the device driver being installed successfully. It will close automatically when the device driver installation is complete.

7. When the driver is successfully installed, a confirm window will appear. Click on “**Finish**” to complete the whole installation procedure.



**Figure 5-3 Sample Installation Step 3**

# 6 Firmware Update

Autel periodically releases updates to the device's drivers. Updates are necessary to solve specific problems and to ensure the VCI device is working properly with the OEM software. If you are experiencing any problems during use, always make sure that you have the latest device software and drivers.

## Update Online

---

This function allows you to update the driver software for the device through the PC. Make sure the PC is connected to the Internet before using this function.

1. Connect the MaxiVCI Mini to the PC via the USB cable.
2. Verify the Power and Connection LEDs on the front panel are illuminated green.
3. From Windows Start Menu, find and double click the “**MaxiVCI Mini**” icon, wait for the program interface to pop up.
4. The update agent will automatically check for the available update online.
5. Press the “**Next**” button to install the newest firmware.
6. Press the “**Cancel**” button to exit.



**Figure 6-1** *Sample Online Update Window*

# 7 Compliance Information

## FCC COMPLIANCE

FCC ID: WQ8-MXVCIMINI

This device complies with Part 15 of the FCC Rules.  
Operation is subject to the following two conditions:

- 1 This device may not cause harmful interference.
- 2 This device must accept any interference received, including interference that may cause undesired operation.

---

### WARNING

Changes or modifications not expressly approved by the party responsible for compliance could void the user's authority to operate the equipment.

---

### NOTE

This equipment has been tested and found to comply with the limits for a Class B digital device, pursuant to Part 15 of the FCC Rules. These limits are designed to provide reasonable protection against harmful interference in a residential installation.

---

This equipment generates uses and can radiate radio frequency energy and, if not installed and used in accordance with the instructions, may cause harmful interference to radio communications. However, there is no guarantee that interference will not occur in a particular installation. If this equipment does cause harmful interference to radio or television reception, which can be determined by turning the equipment off and on, the user is encouraged to try to correct the interference by one or more of the following measures: i . Reorient or relocate the receiving antenna. ii . Increase the separation between the equipment and receiver. iii. Connect the equipment into an outlet on a circuit different from that to which the receiver is connected. iv. Consult the dealer or an experienced radio/TV technician for help.

**FCC Radiation Exposure Statement:**

This equipment complies with FCC radiation exposure limits set forth for an uncontrolled environment.

**RoHS COMPLIANCE**

This device is declared to be in compliance with the European RoHS Directive 2011/65/EU.

**CE COMPLIANCE**

This product is declared to conform to the essential requirements of the following Directives and carries the CE mark accordingly:

EMC Directive 2014/30/EU

RED Directive 2014/53/EU

Low Voltage Directive 2014/35/EU



# 8

## Warranty and Service

### Limited One Year Warranty

---

Autel warrants to its customers that this product will be free from all defects in materials and workmanship for a period of one (1) year from the date of the original purchase, subject to the following terms and conditions:

- 1) The sole responsibility of Autel under the Warranty is limited to either the repair or, at the option of Autel, replacement of the device at no charge with Proof of Purchase.
- 2) This warranty does not apply to damage due directly or indirectly, to misuse, abuse, negligence or accidents, repairs or alterations outside our Service Center or facilities, criminal activity, improper installation, normal wear and tear, or to lack of maintenance.
- 3) Autel shall not be liable for any incidental or consequential damages arising from the use, misuse, or mounting of the device. Some states do not allow limitations on how long an implied warranty lasts, so the above limitations may not apply to you.
- 4) All information in this manual is based on the latest information available at the time of publication and no warranty can be made for its accuracy or completeness. Autel reserves the right to make changes at any time without notice.

### Service Information

---

If you have any questions, please contact your local distributor or visit our website at [www.autel.com](http://www.autel.com).

If it becomes necessary to return the tool for repair, contact your local distributor for more information.

Notes: This product only use for professional person.