

FCC SAR Test Report

Product : AUTOMOTIVE DIAGNOSIS & ANALYSIS SYSTEM

Trade mark : **AUTEL**

Model/Type reference : MaxiSys MS906 Pro-TS,
MaxiCOM MK906 Pro-TS,
MaxiCOM MK906S Pro-TS,
MaxiSys MS906 Pro2-TS,
MaxiCOM MK906 Pro2-TS,
MaxiCOM MK906S PRO2-TS

Serial Number : N/A

Report Number : EED32Q81610205

FCC ID : WQ8-DV2121

Date of Issue: : Aug. 22, 2025

Test Standards : Refer to Section 1.5

Test result : PASS

Prepared for:

Autel Intelligent Technology Corp., Ltd.

**Floor 2, Caihong Keji Building, 36 Hi-tech North Six Road, Songpingshan Community,
Xili Sub-district, Nanshan District, Shenzhen City, China**

Prepared by:

Centre Testing International Group Co., Ltd.

**Hongwei Industrial Zone, Bao'an 70 District,
Shenzhen, Guangdong, China**

TEL: +86-755-3368 3668

FAX: +86-755-3368 3385

Compiled by:

Keven Tan

Keven Tan

Approved by:

Aaron Ma

Aaron Ma

Reviewed by:

Frazer Li

Frazer Li

Date:

Aug. 22, 2025



Check No.: 3936121024

Table of contents

1	General information	4
1.1	Notes	4
1.2	Application details	4
1.3	EUT Information	5
1.4	Statement of Compliance	7
1.5	Test standard/s	8
1.6	RF exposure limits	9
1.7	SAR Definition	9
1.8	Testing laboratory	10
1.9	Test Environment	10
1.10	Applicant and Manufacturer	10
2	SAR Measurement System Description and Setup	11
2.1	The Measurement System Description	11
2.2	Probe description	12
2.3	Data Acquisition Electronics description	13
2.4	SAM Twin Phantom description	14
2.5	ELI4 Phantom description	15
2.6	Device Holder description	16
3	SAR Test Equipment List	17
4	SAR Measurement Procedures	18
4.1	Spatial Peak SAR Evaluation	18
4.2	Data Storage and Evaluation	19
4.3	Data Storage and Evaluation	23
5	SAR Verification Procedure	25
5.1	Tissue Simulating Liquids	25
5.2	Tissue Verification	26
5.3	System check Procedure	28
5.4	System check results	29
6	SAR Measurement variability and uncertainty	30
6.1	SAR measurement variability	30
6.2	SAR measurement uncertainty	30
7	SAR Test Configuration	31
7.1	WIFI 5G Test Configurations	31
7.2	WIFI 2.4G Test Configurations	35
8	SAR Test Results	36

8.1	Conducted Power Measurements	36
8.1.1	Conducted power of Wi-Fi 5G	36
8.1.2	Conducted Power of Wi-Fi 2.4G	40
8.1.3	Conducted Power of BT	42
8.2	SAR test results	43
8.2.1	Results overview of WiFi 5G	44
8.2.2	Results overview of WiFi 2.4G	46
8.3	Multiple Transmitter Information	47
8.4	Stand-alone SAR	48
8.5	Simultaneous transmission analysis	51
8.6	Simultaneous Transmission Possibilitiesand Concusion	53
Annex A:	Appendix A: SAR System performance Check Plots	54
Annex B:	Appendix B: SAR Measurement results Plots	54
Annex C:	Appendix C: Calibration reports	54
Annex D:	Appendix D: Photo documentation	54

1 General information

1.1 Notes

The test results of this test report relate exclusively to the test item specified in this test report.

Centre Testing International Group Co., Ltd. does not assume responsibility for any conclusions and generalisations drawn from the test results with regard to other specimens or samples of the type of the equipment represented by the test item. The test report is not to be reProduced or published in full without the prior written permission.


1.2 Application details

Date of receipt of test item: 2025-05-09

Start of test: 2025-05-10

End of test: 2025-07-02

1.3 EUT Information

Device Information:			
Product:	AUTOMOTIVE DIAGNOSIS & ANALYSIS SYSTEM		
Model:	MaxiSys MS906 Pro- TS, MaxiCOM MK906 Pro-TS, MaxiCOM MK906S Pro-TS, MaxiSys MS906 Pro2-TS, MaxiCOM MK906 Pro2-TS, MaxiCOM MK906S PRO2-TS		
Trade mark:			
SN:	N/A		
Product Type:	<input type="checkbox"/> Mobile <input checked="" type="checkbox"/> Portable <input type="checkbox"/> Fix Location		
Exposure Category:	uncontrolled environment / general population		
Antenna Type :	BT: Chip Antenna WiFi: PIFA Antenna		
Antenna gain:	Bluetooth LE & Bluetooth Classic: 0.50dBi, 2.4G WiFi: ANT 1: 3.7dBi ANT 2: 4.1dBi 5G Wi-Fi U-NII-1: ANT 1: 2.7dBi, ANT 2: 2.6dBi 5G Wi-Fi U-NII-3: ANT 1: 3.4dBi, ANT 2: 3.8dBi		
Others Accessories:	N/A		
Device Operating Configurations:			
Supporting Mode(s) :	BT Dual mode: 2402MHz to 2480MHz; 2.4GHz Wi-Fi: 802.11b/g/n(HT20 and HT40): 2412MHz ~2462 MHz. 5G WIFI: U-NII-1:5.15-5.25GHz; U-NII-3:5.725-5.850GHz.		
Modulation:	BT: GFSK,π/4DQPSK,8DPSK WIFI: DSSS/OFDM/OFDMA		
Operating Frequency Range(s)	Band	TX(MHz)	RX(MHz)
	WIFI 2.4G	2412~2462	
	WIFI 5G	5150-5250; 5725-5850	
	BT	2402~2480	
Test Channels (low-mid-high):	1/3-6-9/11 (2.4G Wi-Fi)		
	0-39-78 (BT)		
	0-19-39 (BLE 2450)		
	WIFI 5G 802.11a/n/ac(20M): 36-40-44-48-149-153-157-161-165		
	WIFI 5G 802.11 n/ac(40M): 38-46-151-159		
	WIFI 5G 802.11ac(80M): 42-155		

Power Source:	Adapter:	Model:GME36E-120300FDR Input:100-240V~50/60Hz 1.2A Output:12V---3.0A 36.0W
	Li-ion Battery	Model:DV2027 DC 3.85V, 11600mAh, 44.66Wh
<p>Remark:</p> <p>Model No.: MaxiSys MS906 Pro- TS,MaxiCOM MK906 Pro-TS, MaxiCOM MK906S Pro-TS, MaxiSys MS906 Pro2-TS, MaxiCOM MK906 Pro2-TS, MaxiCOM MK906S PRO2-TS</p> <p>Only the model MaxiSys MS906 Pro- TS was tested, Their electrical circuit design, layout, components used and internal wiring are identical,only the color and model names are different due todifference agent and marketing purposes.</p>		

1.4 Statement of Compliance

The maximum results of Specific Absorption Rate (SAR) found during testing are as below:

Band	MAX Reported SAR (W/kg)		SAR Test Limit (W/kg)
	1-g Head	1-g Body (0mm)	
WiFi 2.4G	N/A	0.666	1.60
WiFi 5.2G	N/A	0.408	1.60
WiFi 5.8G	N/A	0.621	1.60
Highest Simultaneous Transmission	N/A	1.090	1.60

Remark: N/A: This devices doesn't support voice mode, the head mode is not applicable.

Note:

The device is in compliance with Specific Absorption Rate (SAR) for general population/uncontrolled exposure limits(1.6W/kg) according to the FCC rule §2.1093, the ANSI/IEEE C95.1:1992, the NCRP Report Number 86 for uncontrolled environment, according to the Industry Canada Radio Standards Specification RSS-102 for General Population/Uncontrolled exposure, and had been tested in accordance with the measurement methods and Procedures specified in IEEE Std 1528-2013.

1.5 Test standard/s

ANSI Std C95.1-1992	Safety Levels with Respect to Human Exposure to Radio Frequency Electromagnetic Fields, 3 kHz to 300 GHz.
IEEE Std 1528-2013	Recommended Practice for Determining the Peak Spatial-Average Specific Absorption Rate (SAR) in the Human Head from Wireless Communications Devices: Measurement Techniques
KDB 248227 D01	SAR guidance for IEEE 802.11(Wi-Fi) transmitters v02r02
KDB 616217 D04	SAR for laptop and tablets v01r02
KDB 447498 D04	Interim General RF Exposure Guidance v01
KDB 690783 D01	SAR Listings on Grants v01r03
KDB 865664 D01	SAR Measurement 100 MHz to 6 GHz v01r04
KDB 865664 D02	RF Exposure Reporting v01r02

1.6 RF exposure limits

Human Exposure	Uncontrolled Environment General Population	Controlled Environment Occupational
Spatial Peak SAR* (Brain/Body/Arms/Legs)	1.60 mW/g	8.00 mW/g
Spatial Average SAR** (Whole Body)	0.08 mW/g	0.40 mW/g
Spatial Peak SAR*** (Hands/Feet/Ankle/Wrist)	4.00 mW/g	20.00 mW/g

The limit applied in this test report is shown in bold letters

Notes:

* The Spatial Peak value of the SAR averaged over any 1 gram of tissue (defined as a tissue volume in the shape of a cube) and over the appropriate averaging time.

** The Spatial Average value of the SAR averaged over the whole body.

*** The Spatial Peak value of the SAR averaged over any 10 grams of tissue (defined as a tissue volume in the shape of a cube) and over the appropriate averaging time.

Uncontrolled Environments are defined as locations where there is the exposure of individuals who have no knowledge or control of their exposure.

Controlled Environments are defined as locations where there is exposure that may be incurred by persons who are aware of the potential for exposure, (i.e. as a result of employment or occupation).

1.7 SAR Definition

Specific Absorption Rate is defined as the time derivative (rate) of the incremental energy (dW) absorbed by (dissipated in) an incremental mass (dm) contained in a volume element (dV) of a given density (ρ).

$$SAR = \frac{d}{dt} \left(\frac{dW}{dm} \right) = \frac{d}{dt} \left(\frac{dW}{\rho dV} \right)$$

SAR is expressed in units of watts per kilogram (W/kg). SAR can be related to the electric field at a point by

$$SAR = \frac{\sigma |E|^2}{\rho}$$

where:

σ = conductivity of the tissue (S/m)
ρ = mass density of the tissue (kg/m³)
E = rms electric field strength (V/m)

1.8 Testing laboratory

Test Site	Centre Testing International Group Co., Ltd.
Test Location	Hongwei Industrial Zone, Bao'an 70 District, Shenzhen, Guangdong, China
Telephone	+86 (0) 755 3368 3668
Fax	+86 (0) 755 3368 3385

1.9 Test Environment

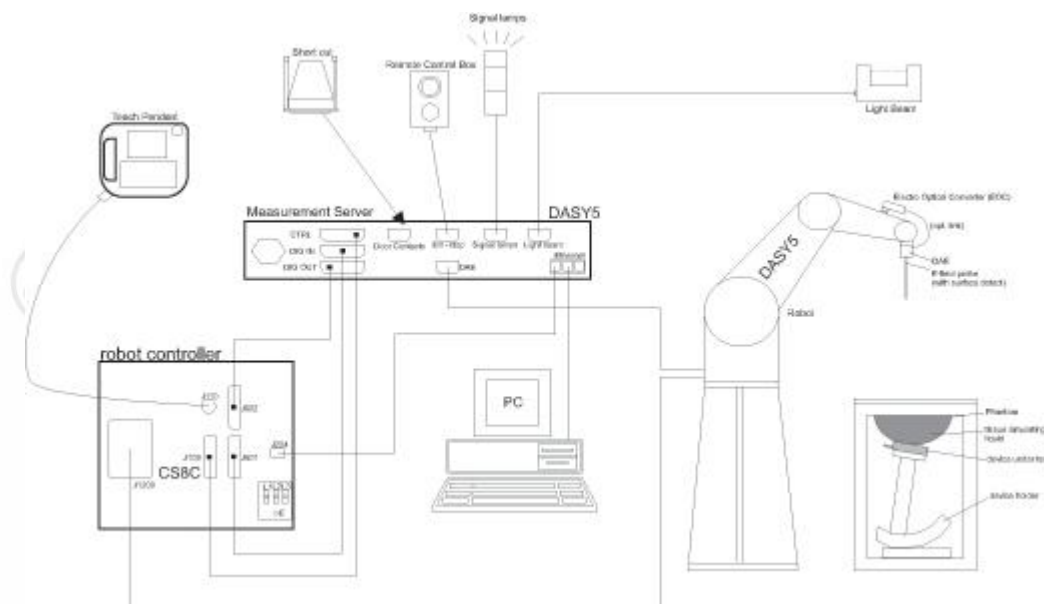
	Required	Actual
Ambient temperature:	18 – 25 °C	21.5 ± 2.0 °C
Tissue Simulating liquid:	18 – 25 °C	21.5 ± 2.0 °C
Relative humidity content:	30 – 70 %	30 – 70 %

1.10 Applicant and Manufacturer

Applicant/Client Name:	Autel Intelligent Technology Corp., Ltd.
Applicant Address:	Floor 2, Caihong Keji Building, 36 Hi-tech North Six Road, Songpingshan Community, Xili Sub-district, Nanshan District, Shenzhen City, China
Manufacturer Name:	Autel Intelligent Technology Corp., Ltd.
Manufacturer Address:	Floor 2, Caihong Keji Building, 36 Hi-tech North Six Road, Songpingshan Community, Xili Sub-district, Nanshan District, Shenzhen City, China
Factory Name:	Autel Intelligent Technology Corp., Ltd. Guangming Branch
Factory Address:	7F&6F, East Wing, Building 2, and 6F of Electronical Building, Yanxiang Industrial Zone, Gaoxin Rd, Dongzhou Community of Guangming New District, Shenzhen

2 SAR Measurement System Description and Setup

2.1 The Measurement System Description



The DASYS5 system for performing compliance tests consists of the following items:

- A standard high precision 6-axis robot (Stäubli TX/RX family) with controller, teach pendant and software. An arm extension for accommodating the data acquisition electronics (DAE).
- An isotropic field Probe optimized and calibrated for the targeted measurement.
- A data acquisition electronics (DAE) which performs the signal amplification, signal multiplexing, AD-conversion, offset measurements, mechanical surface detection, collision detection, etc. The unit is battery powered with standard or rechargeable batteries. The signal is optically transmitted to the EOC.
- The Electro-optical converter (EOC) performs the conversion from optical to electrical signals for the digital communication to the DAE. To use optical surface detection, a special version of the EOC is required. The EOC signal is transmitted to the measurement server.
- The function of the measurement server is to perform the time critical tasks such as signal filtering, control of the robot operation and fast movement interrupts.
- The Light Beam used is for Probe alignment. This improves the (absolute) accuracy of the Probe positioning.
- A computer running Win7 Profesional operating system and the DASYS5 software.
- Remote control and teach pendant as well as additional circuitry for robot safety such as warning lamps, etc.
- The phantom, the device holder and other accessories according to the targeted measurement.

2.2 Probe description

Dosimetric Probes: These Probes are specially designed and calibrated for use in liquids with high permittivities. They should not be used in air, since the spherical isotropy in air is poor(± 2 dB). The dosimetric Probes have special calibrations in various liquids at different frequencies.

Construction	Symmetrical design with triangular core Interleaved sensors Built-in shielding against static charges PEEK enclosure material (resistant to organic solvents, e.g., DGBE)
Calibration	ISO/IEC 17025 calibration service available.
Frequency	10 MHz to 6 GHz; Linearity: ± 0.2 dB
Probe Overall Length	337mm
Probe Body Diameter	10mm
Tip Length	9mm
Tip Diameter	2.5mm
Dynamic range	5 μ W/g to 100 mW/g; Linearity: ± 0.2 dB

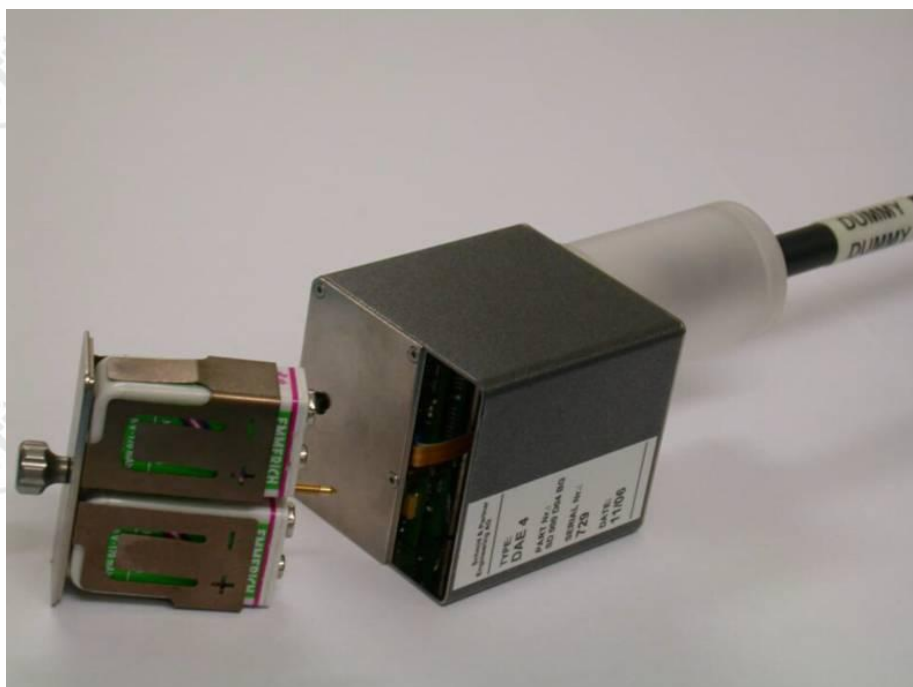


2.3 Data Acquisition Electronics description

The data acquisition electronics (DAE4) consist of a highly sensitive electrometer-grade preamplifier with auto-zeroing, a channel and gain-switching multiplexer, a fast 16 bit AD-converter and a command decoder with a control logic unit. Transmission to the measurement server is accomplished through an optical downlink for data and status information, as well as an optical uplink for commands and the clock.

The mechanical Probe mounting device includes two different sensor systems for frontal and sideways Probe contacts. They are used for mechanical surface detection and Probe collision detection. The input impedance of the DAE4 box is 200M Ω ; the inputs are symmetrical and floating. Common mode rejection is above 80 dB.

Batteries: The DAE works with either two standard 9V batteries or two 9V (actually 8.4V or 9.6 V) rechargeable batteries. Because the electronics automatically power-down unused components during braking or between measurements, the battery lifetime depends on system usage. Typical lifetimes are >20 hours for batteries and >10 hours for accus. Remove the batteries if you do not plan to use the DAE for a long period of time.



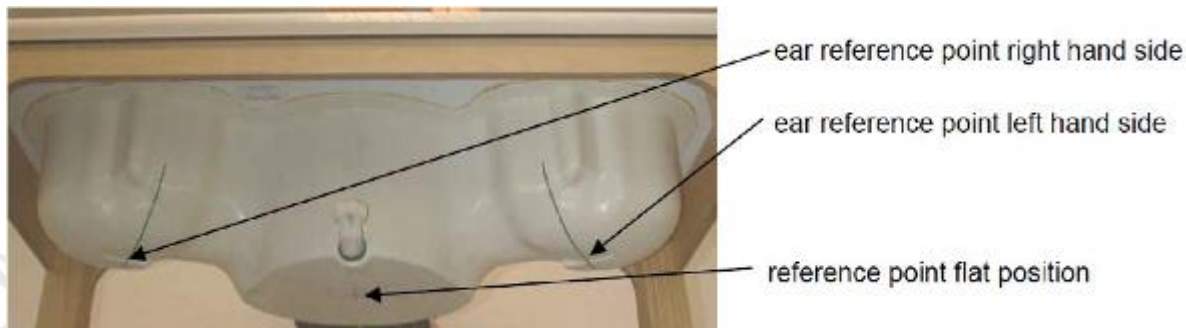
2.4 SAM Twin Phantom description

The SAM twin phantom is a fiberglass shell phantom with 2mm shell thickness (except the ear region, where shell thickness increases to 6 mm). The phantom has three measurement areas:

◆ Left hand

◆ Right hand

◆ Flat phantom



The phantom table for the DASY systems have the size of 100 x 50 x 85 cm (L x W x H). These tables are reinforced for mounting of the robot onto the table. For easy dislocation these tables have fork lift cut outs at the bottom.

The bottom plate contains three pairs of bolts for locking the device holder. The device holder positions are adjusted to the standard measurement positions in the three sections.

A white cover is provided to cover the phantom during off-periods to prevent water evaporation and changes in the liquid parameters.

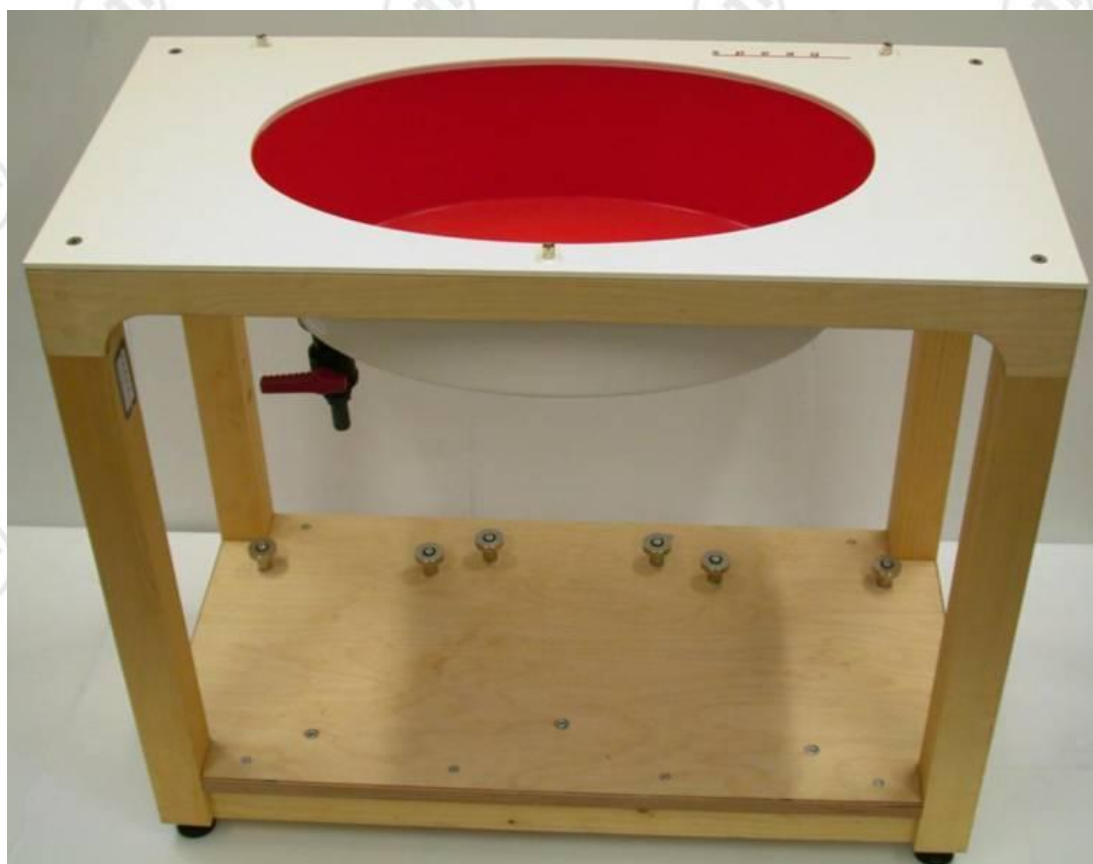
Three reference marks are provided on the phantom counter. These reference marks are used to teach the absolute phantom position relative to the robot.



2.5 ELI4 Phantom description

The ELI4 phantom is intended for compliance testing of handheld and body mounted wireless devices in the frequency range of 30MHz to 6 GHz. ELI4 is fully compatible with the latest draft of the standard IEC 62209-2 and all known tissue simulating liquids.

ELI4 has been optimized regarding its performance and can be integrated into a SPEAG standard phantom table. A cover prevents evaporation of the liquid. Reference markings on the phantom allow installation of the complete setup, including all predefined phantom positions and measurement grids, by teaching three points



2.6 Device Holder description

The SAR in the phantom is approximately inversely Proportional to the square of the distance between the source and the liquid surface. For a source at 5mm distance, a positioning uncertainty of $\pm 0.5\text{mm}$ would Produce a SAR uncertainty of $\pm 20\%$. Accurate device positioning is therefore crucial for accurate and repeatable measurements. The positions in which the devices must be measured are defined by the standards.

The DASY device holder is designed to cope with the different positions given in the standard. It has two scales for device rotation (with respect to the body axis) and device inclination (with respect to the line between the ear reference points). The rotation centers for both scales is the ear reference point (ERP). Thus the device needs no repositioning when changing the angles.

The DASY device holder is constructed of low-loss POM material having the following dielectric parameters: relative permittivity $\epsilon = 3$ and loss tangent $\delta = 0.02$. The amount of dielectric material has been reduced in the closest vicinity of the device, since measurements have suggested that the influence of the clamp on the test results could thus be lowered.



3 SAR Test Equipment List

To simplify the identification of the test equipment and/or ancillaries which were used, the reporting of the relevant test cases only refer to the test item number as specified in the table below.

	Manufacturer	Device Type	Type(Model)	Serial number	Date of last calibration	Valid period
<input checked="" type="checkbox"/>	SPEAG	E-Field Probe	EX3DV4	7328	2025-05-07	One year
<input type="checkbox"/>	SPEAG	835 MHz Dipole	D835V2	4d193	2024-01-17	Three years
<input type="checkbox"/>	SPEAG	1750 MHz Dipole	D1750V2	1134	2024-01-17	Three years
<input type="checkbox"/>	SPEAG	1900 MHz Dipole	D1900V2	5d198	2024-01-18	Three years
<input type="checkbox"/>	SPEAG	2000 MHz Dipole	D2000V2	1078	2024-01-22	Three years
<input type="checkbox"/>	SPEAG	2300 MHz Dipole	D2300V2	1082	2023-01-11	Three years
<input checked="" type="checkbox"/>	SPEAG	2450 MHz Dipole	D2450V2	959	2024-01-17	Three years
<input type="checkbox"/>	SPEAG	2600 MHz Dipole	D2600V2	1101	2024-01-22	Three years
<input checked="" type="checkbox"/>	SPEAG	5 GHz Dipole	D5GHzV2	1208	2024-01-16	Three years
<input checked="" type="checkbox"/>	SPEAG	DAKS Probe	DAKS-3.5	1052	2024-04-22	Three years
<input checked="" type="checkbox"/>	SPEAG	Planar R140 Vector Reflectometer	DAKS-VNA R140	0200514	2024-04-22	Three years
<input checked="" type="checkbox"/>	SPEAG	Data acquisition electronics	DAE4	1458	2025-01-20	One year
<input checked="" type="checkbox"/>	SPEAG	Software	DASY 5	NA	NCR	NCR
<input type="checkbox"/>	SPEAG	Twin Phantom	SAM V5.0	1875	NCR	NCR
<input checked="" type="checkbox"/>	SPEAG	Flat Phantom	ELI V6.0	2024	NCR	NCR
<input checked="" type="checkbox"/>	Liquid	Head Liquid	2450 Head	2450	/	/
<input checked="" type="checkbox"/>	Liquid	Head Liquid	5200 Head	5250	/	/
<input checked="" type="checkbox"/>	Liquid	Head Liquid	5800 Head	5750	/	/
<input type="checkbox"/>	R & S	Universal Radio Communication Tester	CMW500	102898	2024-12-05	One year
<input checked="" type="checkbox"/>	Agilent	Signal Generator	N5181A	MY50142334	2024-12-05	One year
<input checked="" type="checkbox"/>	BONN	Power Amplifier and directional coupler	SU319W	BL-SZ1550140	2024-12-05	One year
<input checked="" type="checkbox"/>	KEITHLEY	RF Power Meter	3500	1128079	2025-06-08	One year
<input checked="" type="checkbox"/>	KEITHLEY	RF Power Meter	3500	1128081	2025-06-08	One year
<input checked="" type="checkbox"/>	JINGCHUAN G	Temperature/ Humidity Indicator	GSP-8	EMK197F00095	2025-06-05	One year

Note:

- 1) Per KDB865664D01 requirements for dipole calibration, the test laboratory has adopted three-year extended calibration interval. Each measured dipole is expected to evaluate with the following criteria at least on annual interval in Appendix C.
 - a) There is no physical damage on the dipole;
 - b) System check with specific dipole is within 10% of calibrated value;
 - c) The most recent return-loss result, measured at least annually, deviates by no more than 20% from the previous measurement.
 - d) The most recent measurement of the real or imaginary parts of the impedance, measured at least annually is within 5Ω from the previous measurement.

4 SAR Measurement Procedures

4.1 Spatial Peak SAR Evaluation

The DASY5 software includes all numerical Procedures necessary to evaluate the spatial peak SAR values. The base for the evaluation is a "cube" measurement in a volume of 30mm³ (7x7x7 points). The measured volume must include the 1 g and 10 g cubes with the highest averaged SAR values. For that purpose, the center of the measured volume is aligned to the interpolated peak SAR value of a previously performed area scan. If the 10g cube or both cubes are not entirely inside the measured volumes, the system issues a warning regarding the evaluated spatial peak values within the PostProcessing engine (SEMCAD X). This means that if the measured volume is shifted, higher values might be possible. To get the correct values you can use a finer measurement grid for the area scan. In complicated field distributions, a large grid spacing for the area scan might miss some details and give an incorrectly interpolated peak location. The entire evaluation of the spatial peak values is performed within the PostProcessing engine (SEMCAD X). The system always gives the maximum values for the 1 g and 10 g cubes.

The algorithm to find the cube with highest averaged SAR is divided into the following stages:

1. extraction of the measured data (grid and values) from the Zoom Scan
2. calculation of the SAR value at every measurement point based on all stored data (A/D values and measurement parameters)
3. generation of a high-resolution mesh within the measured volume
4. interpolation of all measured values from the measurement grid to the high-resolution grid
5. extrapolation of the entire 3-D field distribution to the phantom surface over the distance from sensor to surface
6. calculation of the averaged SAR within masses of 1 g and 10 g

4.2 Data Storage and Evaluation

Data Storage

The DASY5 software stores the measured voltage acquired by the Data Acquisition Electronics (DAE) as raw data together with all the necessary software parameters for the data evaluation (Probe calibration data, liquid parameters and communication system parameters) in measurement files with the extension .da5x. The postProcessing software evaluates the data every time the data is visualized or exported. This allows the verification and modification of the setup after completion of the measurement. For example, if a measurement has been performed with an incorrect crest factor, the parameter can be corrected afterwards and the data can be reevaluated.

To avoid unintentional parameter changes or data manipulations, the parameters in measured files are locked. In the administrator access mode of the software, the parameters can be unlocked. After changing the parameters, the measured scans can be reevaluated in the postProcessing engine.

The measured data can be visualized or exported in different units or formats, depending on the selected Probe type (e.g., E-field, H-field, SAR). Some of these units are not available in certain situations or give meaningless results, e.g., a SAR-output in a lossless media will always be zero. Raw data can also be exported to perform the evaluation with other software packages.

Data Evaluation

The fields and SAR are calculated from the measured voltage (Probe voltage acquired by the DAE) and the following parameters:

Probe parameters:	- Sensitivity	$\text{norm}_i, a_{i0}, a_{i1}, a_{i2}$
	- Conversion Factor	convF_i
	- Diode Compression Point	dcp_i
	- Probe Modulation Response Factors	a_i, b_i, c_i, d
Device parameters:	- Frequency	f
	- Crest factor	cf
Media parameters:	- Conductivity	σ
	- Relative Permittivity	ρ

This parameters are stored in the DASY5 V52 measurement file.

These parameters must be correctly set in the DASY5 V52 software setup. They are available as configuration file and can be imported into the measurement file. The values displayed in the multimeter window are assessed using the parameters of the actual system setup. In the scan visualization and export modes, the parameters stored in the measurement file are used.

The measured voltage is not Proportional to the exciting. It must be first linearized.

ApProximated Probe Response Linearization using Crest Factor.

This linearization method is enabled when a custom defined communication system is measured. The compensation applied is a function of the measured voltage, the detector diode compression point and the crest factor of the measured signal.

$$V_i = U_i + U_i^2 \cdot \frac{cf}{dcp_i}$$

with	V_i	=	linearized voltage of channel i (uV)	(i = x,y,z)
	U_i	=	measured voltage of channel i (uV)	(i = x,y,z)
	cf	=	crest factor of exciting field	(DASY parameter)
	dcp _i	=	diode compression point of channel i (uV)	(Probe parameter, i = x,y,z)

Field and SAR Calculation

The primary field data for each channel are calculated using the linearized voltage:

$$E - \text{fieldProbes : } E_i = \sqrt{\frac{V_i}{\text{Norm}_i \cdot \text{ConvF}}}$$

$$H - \text{fieldProbes : } H_i = \sqrt{V_i} \cdot \frac{a_{i0} + a_{i1}f + a_{i2}f^2}{f}$$

with	V_i	=	linearized voltage of channel i	(i = x,y,z)
	Norm_i	=	sensor sensitivity of channel i	(i = x,y,z)
			uV/(V/m) ² for E-field Probes	
	ConvF	=	sensitivity enhancement in solution	
	a_{ij}	=	sensor sensitivity factors for H-field Probes	
	f	=	carrier frequency [GHz]	
	E_i	=	electric field strength of channel i in V/m	
	H_i	=	magnetic field strength of channel i in A/m	

The RMS value of the field components gives the total field strength (Hermitian magnitude):

$$E_{tot} = \sqrt{E_x^2 + E_y^2 + E_z^2}$$

The primary field data are used to calculate the derived field units.

$$SAR = E_{tot}^2 \cdot \frac{\sigma}{\rho \cdot 1'000}$$

with	SAR	=	local specific absorption rate in mW/g
	E_{tot}	=	total field strength in V/m
	σ	=	conductivity in [mho/m] or [Siemens/m]
	ρ	=	equivalent tissue density in g/cm ³

Note that the density is set to 1, to account for actual head tissue density rather than the density of the tissue simulating liquid.

Spatial Peak SAR for 1 g and 10 g

The DASY5 software includes all numerical Procedures necessary to evaluate the spatial peak SAR values. The base for the evaluation is a "cube" measurement at the points of the fine cube grid consisting of 5 x 5 x 7 points(with 8mm horizontal resolution) or 7 x 7 x 7 points(with 5mm horizontal resolution) or 8 x 8 x 7 points(with 4mm horizontal resolution)..The entire evaluation of the spatial peak values is performed within the PostProcessing engine (SEMCAD X).The system always gives the maximum values for the 1 g and 10 g cubes.

The algorithm to find the cube with highest averaged SAR is divided into the following stages:

1. extraction of the measured data (grid and values) from the Zoom Scan.
2. calculation of the SAR value at every measurement point based on all stored data (A/D values and measurement parameters).
3. generation of a high-resolution mesh within the measured volume.
4. interpolation of all measured values from the measurement grid to the high-resolution grid
5. extrapolation of the entire 3-D field distribution to the phantom surface over the distance from sensor to surface.
6. calculation of the averaged SAR within masses of 1 g and 10 g.

4.3 Data Storage and Evaluation

The DASY5 installation includes predefined files with recommended Procedures for measurements and validation. All test positions (head or body-worn) are tested with the same configuration of test steps differing only in the grid definition for the different test positions.

Step 1: Power reference measurement

The Power Reference Measurement and Power Drift Measurement are for monitoring the power drift of the device under test in the batch Process. The Minimum distance of Probe sensors to surface determines the closest measurement point to phantom surface. By default, the Minimum distance of Probe sensors to surface is 4 mm. This distance can be modified by the user, but cannot be smaller than the Distance of sensor calibration points to Probe tip as defined in the Probe Properties. The SAR measurement was taken at a selected spatial reference point to monitor power variations during testing. This fixed location point was measured and used as a reference value.

Step 2: Area Scan

The Area Scan is used as a fast scan in two dimensions to find the area of high field values, before doing a finer measurement around the hotspot. The sophisticated interpolation routines implemented in DASY5 software can find the maximum locations even in relatively coarse grids. When an Area Scan has measured all reachable points, it computes the field maxima found in the scanned area, within a range of the global maximum. The range (in dB) is specified in the standards for compliance testing. For example, a 2 dB range is required in IEEE 1528-2003 and IEC 62209 standards, whereby 3 dB is a requirement when compliance is assessed in accordance with the ARIB standard (Japan). If only one Zoom Scan follows the Area Scan, then only the absolute maximum will be taken as reference. For cases where multiple maximums are detected, the number of Zoom Scans has to be increased accordingly.

Step 3: Zoom Scan

The Zoom Scans are used to assess the peak spatial SAR values within a cubic averaging volume containing 1 gram and 10 gram of simulated tissue. The default Zoom Scan is defined in the following table. DASY5 is also able to perform repeated zoom scans if more than 1 peak is found during area scan. When the measurement is done, the Zoom Scan evaluates the averaged SAR for 1 gram and 10 gram and displays these values next to the job's label.

Area scan and Zoom scan resolutions per FCC KDB Publication 865664 D01:

Frequency	Maximun Area Scan resolution ($\Delta x_{Area}, \Delta y_{Area}$)	Maximun Zoom Scan spatial resolution ($\Delta x_{Zoom}, \Delta y_{Zoom}$)	Maximun Zoom Scan spatial resolution			Minimum zoom scan volume (x,y,z)
			Uniform Grid	Graded Grad		
			$\Delta z_{Zoom}(n)$	$\Delta z_{Zoom}(1)^*$	$\Delta z_{Zoom}(n>1)^*$	
$\leq 2\text{GHz}$	$\leq 15\text{mm}$	$\leq 8\text{mm}$	$\leq 5\text{mm}$	$\leq 4\text{mm}$	$\leq 1.5 * \Delta z_{Zoom}(n-1)$	$\geq 30\text{mm}$
2-3GHz	$\leq 12\text{mm}$	$\leq 5\text{mm}$	$\leq 5\text{mm}$	$\leq 4\text{mm}$	$\leq 1.5 * \Delta z_{Zoom}(n-1)$	$\geq 30\text{mm}$
3-4GHz	$\leq 12\text{mm}$	$\leq 5\text{mm}$	$\leq 4\text{mm}$	$\leq 3\text{mm}$	$\leq 1.5 * \Delta z_{Zoom}(n-1)$	$\geq 28\text{mm}$
4-5GHz	$\leq 10\text{mm}$	$\leq 4\text{mm}$	$\leq 3\text{mm}$	$\leq 2.5\text{mm}$	$\leq 1.5 * \Delta z_{Zoom}(n-1)$	$\geq 25\text{mm}$
5-6GHz	$\leq 10\text{mm}$	$\leq 4\text{mm}$	$\leq 2\text{mm}$	$\leq 2\text{mm}$	$\leq 1.5 * \Delta z_{Zoom}(n-1)$	$\geq 22\text{mm}$

Step 4: Power Drift Monitoring

The Power Drift Measurement measures the field at the same location as the most recent power reference measurement job within the same Procedure, and with the same settings. The Power Drift Measurement gives the field difference in dB from the reading conducted within the last Power Reference Measurement. If the value changed by more than 5%, the evaluation should be retested.

5 SAR Verification Procedure

5.1 Tissue Simulating Liquids

For the measurement of the field distribution inside the SAM phantom with DASY, the phantom must be filled with around 25 liters of homogeneous body tissue simulating liquid. For head SAR testing, the liquid height from the ear reference point (ERP) of the phantom to the liquid top surface is larger than 15 cm, which is shown in Fig. 5.1. For body SAR testing, the liquid height from the center of the flat phantom to the liquid top surface is larger than 15 cm, which is shown as followed:

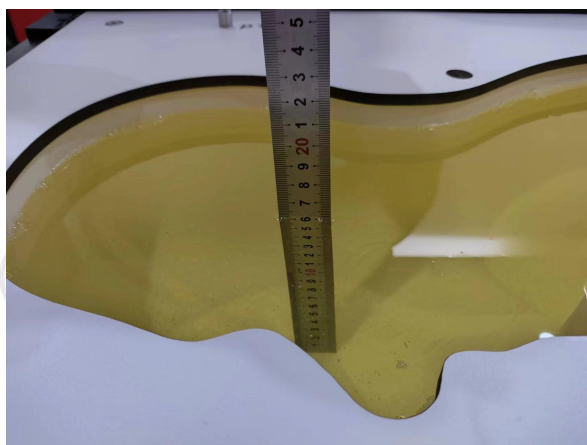


Photo of Liquid Height for Head SAR

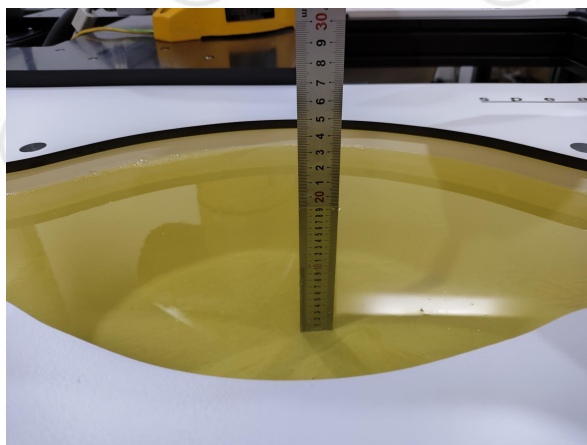


Photo of Liquid Height for Body SAR

5.2 Tissue Verification

The following materials are used for Producing the tissue-equivalent materials.

(Liquids used for tests are marked with ☒):

Ingredients (% of weight)	Frequency (MHz)						
	Head Tissue						
Tissue Type							
frequency band	<input type="checkbox"/> 835	<input type="checkbox"/> 1800	<input type="checkbox"/> 2000	<input type="checkbox"/> 2300	<input checked="" type="checkbox"/> 2450	<input type="checkbox"/> 2600	<input checked="" type="checkbox"/> 5200-5800
Water	41.45	52.64	54.9	62.82	62.7	55.242	65.52
Salt (NaCl)	1.45	0.36	0.18	0.51	0.5	0.306	0.0
Sugar	56.0	0.0	0.0	0.0	0.0	0.0	0.0
HEC	1.0	0.0	0.0	0.0	0.0	0.0	0.0
Bactericide	0.1	0.0	0.0	0.0	0.0	0.0	0.0
Triton X-100	0.0	0.0	0.0	0.0	36.8	0.0	17.24
DGBE	0.0	47.0	44.92	36.67	0.0	44.452	0.0
Diethylenglycol monohexylether	0.0	0.0	0.0	0.0	0.0	0.0	17.24

Salt: 99+% Pure Sodium Chloride

Sugar: 98+% Pure Sucrose

Water: De-ionized, 16MΩ+ resistivity

HEC: Hydroxyethyl Cellulose

DGBE: 99+% Di(ethylene glycol) butyl ether, [2-(2-butoxyethoxy)ethanol]

Triton X-100(ultra pure): Polyethylene glycol mono [4-(1,1,3,3-tetramethylbutyl)phenyl]ether

Tissue simulating liquids: parameters:

Tissue Type	Measured Frequency (MHz)	Target Tissue		Measured Tissue		Deviation (Within $\pm 5\%$)		Liquid Temp.	Test Date
		ϵ_r (+/-5%)	σ (S/m) (+/-5%)	ϵ_r	σ (S/m)	$\Delta\epsilon_r$ %	$\Delta\sigma$ %		
2450H	2450	39.20 (37.24~41.16)	1.80 (1.71~1.89)	39.22	1.857	0.05	3.17	20.90°C	6/10/2025
	2412	39.27 (37.31~41.23)	1.77 (1.68~1.86)	39.48	1.816	0.53	2.60	20.90°C	6/10/2025
	2437	39.22 (37.26~41.18)	1.79 (1.70~1.88)	39.35	1.848	0.33	3.24	20.90°C	6/10/2025
	2462	39.18 (37.22~41.14)	1.81 (1.72~1.90)	39.23	1.871	0.13	3.37	20.90°C	6/10/2025
5000H	5250	35.90 (34.11~37.70)	4.71 (4.47~4.95)	34.13	4.894	-4.93	3.91	20.50°C	6/12/2025
	5200	35.82 (34.20~37.61)	4.80 (4.56~5.04)	34.46	4.794	-3.80	-0.13	20.50°C	6/12/2025
	5180	36.02 (34.22~37.82)	4.64 (4.41~4.87)	34.46	4.619	-4.33	-0.45	20.50°C	6/12/2025
	5240	35.96 (34.16~37.76)	4.70 (4.47~4.94)	34.33	4.729	-4.53	0.62	20.50°C	6/12/2025
5000H	5750	35.30 (33.54~37.07)	5.27 (5.01~5.53)	34.25	5.170	-2.97	-1.90	20.60°C	6/11/2025
	5745	35.36 (33.59~37.13)	5.22 (4.96~5.48)	35.10	5.222	-0.74	0.04	20.60°C	6/11/2025
	5785	35.32 (33.55~37.09)	5.26 (5.00~5.52)	34.53	5.247	-2.24	-0.25	20.60°C	6/11/2025
	5825	35.28 (33.52~37.04)	5.30 (5.04~5.57)	34.63	5.121	-1.84	-3.38	20.60°C	6/11/2025
ϵ_r = Relative permittivity, σ = Conductivity									

5.3 System check Procedure

The System check is performed by using a System check dipole which is positioned parallel to the planar part of the SAM phantom at the reference point. The distance of the dipole to the SAM phantom is determined by a spacer. The dipole is connected to the signal source consisting of signal generator and amplifier via a directional coupler, N-connector cable and adaption to SMA. It is fed with a power of 250mW. To adjust this power a power meter is used. The power sensor is connected to the cable before the System check to measure the power at this point and do adjustments at the signal generator. At the outputs of the directional coupler both return loss as well as forward power are controlled during the validation to make sure that emitted power at the dipole is kept constant. This can also be checked by the power drift measurement after the test (result on plot).

System check results have to be equal or near the values determined during dipole calibration (target SAR in table above) with the relevant liquids and test system.

