

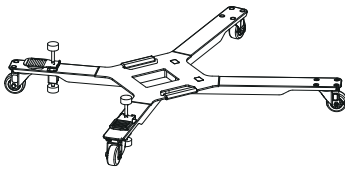
Thank you for purchasing this Autel IA700 Calibration Frame. This equipment is manufactured to a high standard and will provide years of trouble-free performance when used in accordance with these instructions and properly maintained.

IMPORTANT: Before operating or maintaining this equipment, please read these instructions carefully. Use this equipment correctly and with care as failure to do so may cause damage and/or personal injury and will void the warranty.

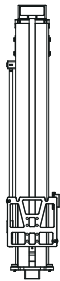
Assembling the Calibration Frame

NOTE: Our calibration frame comes flat-packed and has been disassembled into four main parts before shipment, namely the base, the stand, the crossbar, and the tablet holder. Therefore, the user needs to assemble it before use.

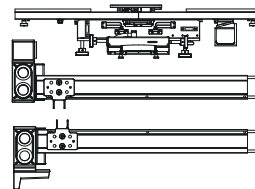
1



Base

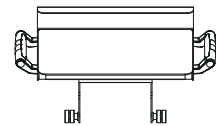


Stand



Crossbar

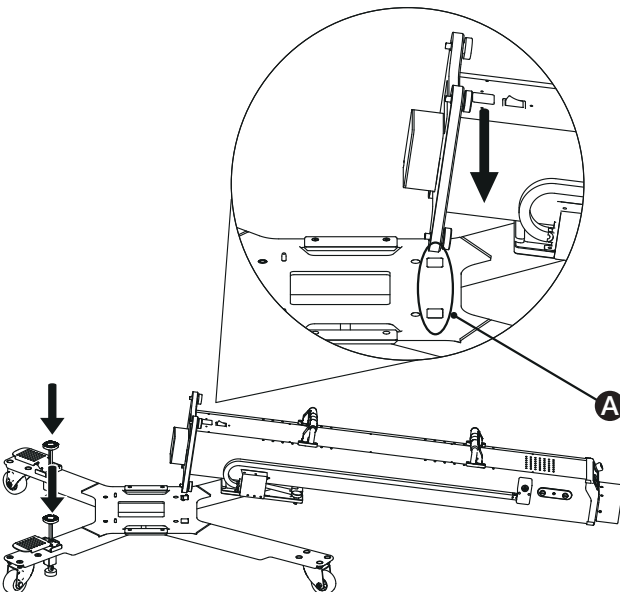
(Left Arm, Arm Connector, Right Arm)



Tablet Holder

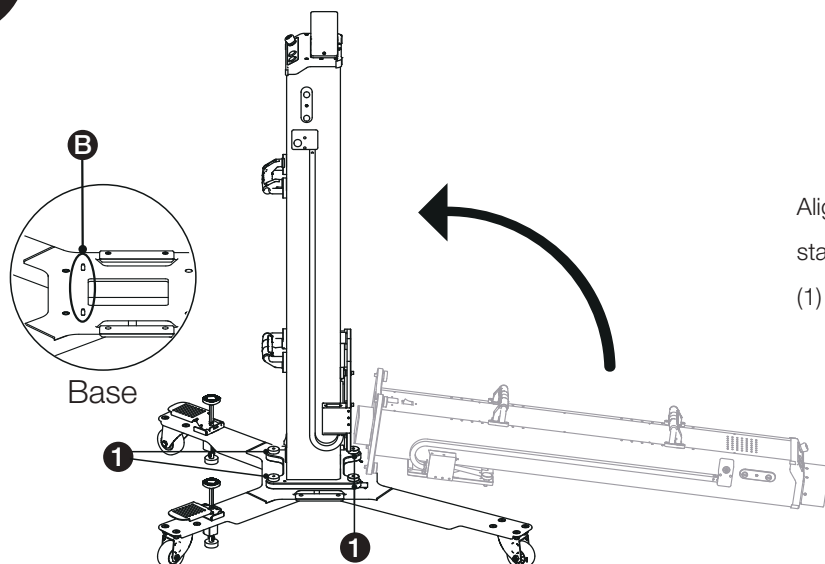
Remove the base, the stand, the crossbar, and the tablet holder from their package.

2



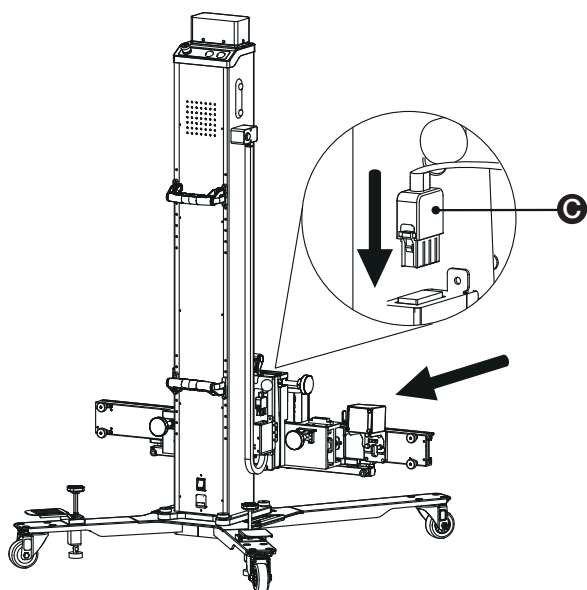
Press down on the both foot brakes to keep the base in a fixed position. Place the stand onto the designated position (A) on the base.

3



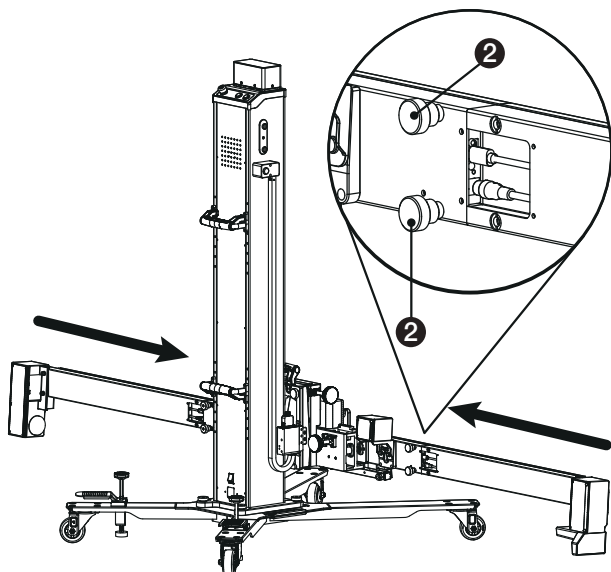
Align the two positioning pins (B) to raise the stand until it is fully upright. Rotate the four knobs (1) clockwise to secure the stand.

4



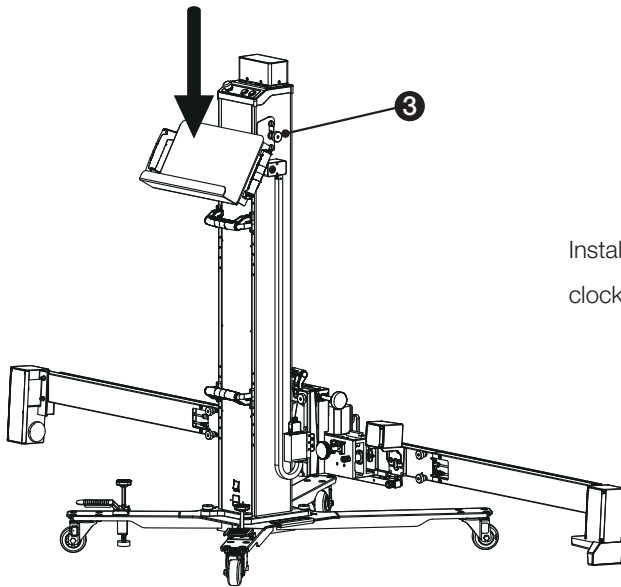
Connect the arm connector to the stand. Plug the adapter (C).

5



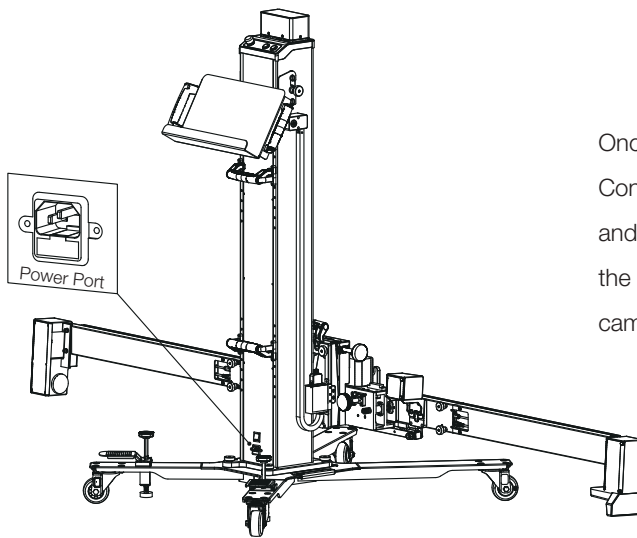
Assemble the left arm and right arm. Tighten all knobs (2) after the crossbar is firmly connected. Plug the power cords and USB cords.

6



Install the tablet holder to the stand. Rotate the two knobs (3) clockwise to secure it.

Powering up the Calibration Frame



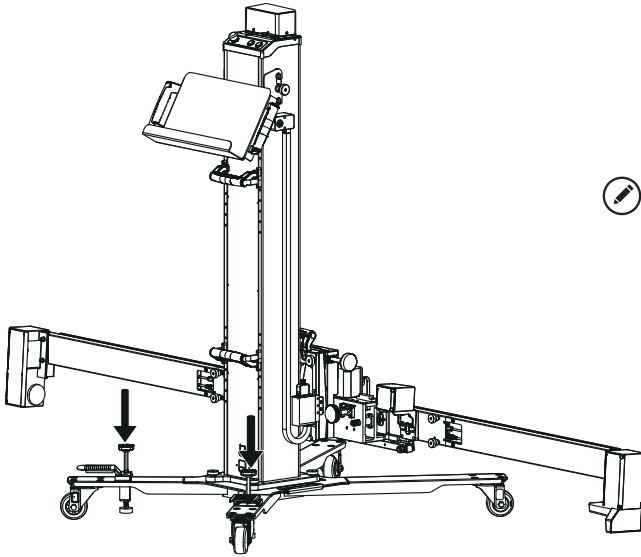
Once the calibration frame is assembled, it is ready for use. Connect the power cord to the port at the bottom of the stand and your power socket, and then turn on the power switch. When the power is on, the power switch will illuminate red, all the cameras will flash red in a circle.



NOTE: System power requirements: 100–264 volts AC, <5 amps, and 50–60 Hz (must be grounded).

Disassembling the Calibration Frame

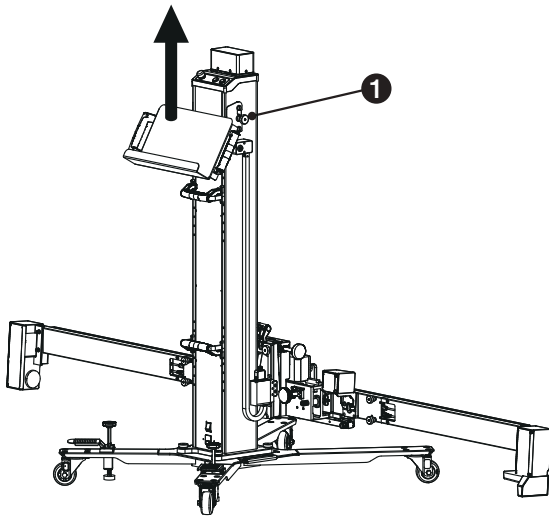
1



NOTE: Before beginning disassembly, please

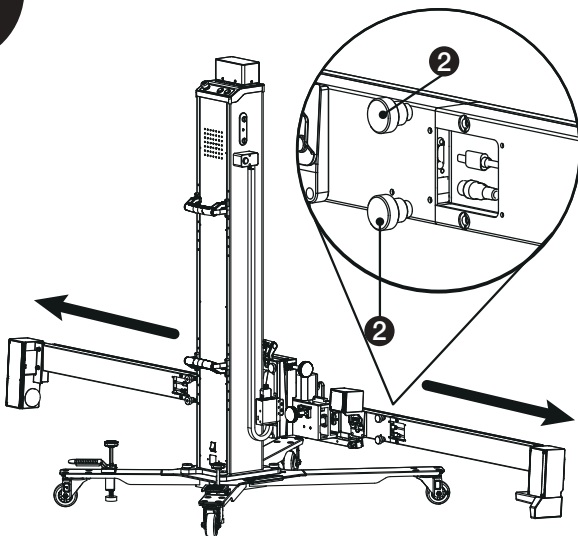
- Lower the crossbar completely.
- Engage the foot brakes to make sure the calibration frame is in a fixed position.
- Power off the calibration frame to avoid electrical shock.

2



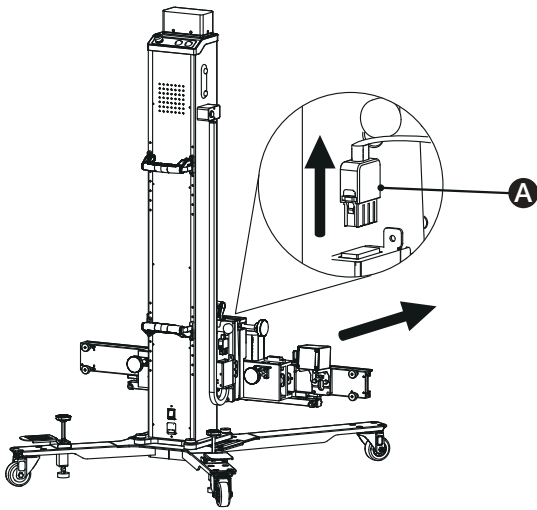
Loosen the two knobs (1) to remove the tablet holder.

3



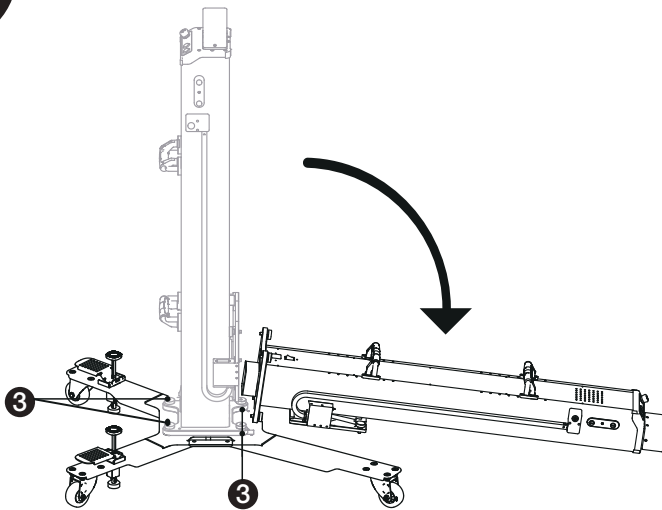
Unplug the power cords and USB cords. Loosen all knobs (2) to disassemble the left arm and right arm.

4



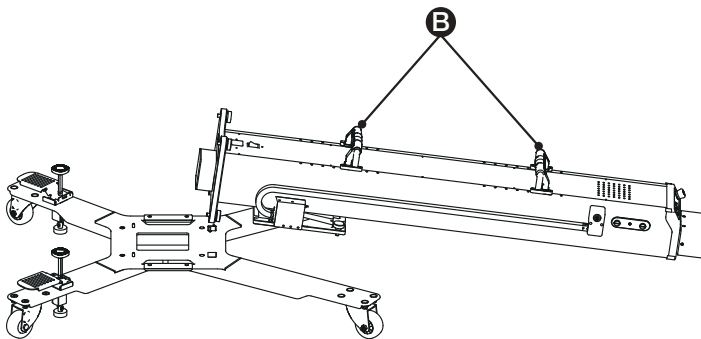
Unplug the adapter (A). Remove the arm connector from the stand.

5



Loosen the four knobs (3) to put down the stand towards the ground.

6



Lift the handles (B) to disconnect the stand and base.

The IA700 calibration frame is now ready for storage.

NOTE: The illustrations in this Quick Reference Guide are for reference only. The actual product may differ.

FCC STATEMENT :

This device complies with Part 15 of the FCC Rules. Operation is subject to the following two conditions:

- (1) This device may not cause harmful interference, and
- (2) This device must accept any interference received, including interference that may cause undesired operation.

Warning: Changes or modifications not expressly approved by the party responsible for compliance could void the user's authority to operate the equipment.

NOTE: This equipment has been tested and found to comply with the limits for a Class B digital device, pursuant to Part 15 of the FCC Rules. These limits are designed to provide reasonable protection against harmful interference in a residential installation. This equipment generates uses and can radiate radio frequency energy and, if not installed and used in accordance with the instructions, may cause harmful interference to radio communications. However, there is no guarantee that interference will not occur in a particular installation. If this equipment does cause harmful interference to radio or television reception, which can be determined by turning the equipment off and on, the user is encouraged to try to correct the interference by one or more of the following measures:

- Reorient or relocate the receiving antenna.

- Increase the separation between the equipment and receiver.

- Connect the equipment into an outlet on a circuit different from that to which the receiver is connected.

- Consult the dealer or an experienced radio/TV technician for help.

FCC Radiation Exposure Statement:

This equipment complies with FCC radiation exposure limits set forth for an uncontrolled environment. This equipment should be installed and operated with minimum distance 20cm between the radiator & your body.

IC STATEMENT :

- English: "

This device complies with Industry Canada licence-exempt RSS standard(s). Operation is subject to the following two conditions:

- (1) this device may not cause interference, and
- (2) this device must accept any interference, including interference that may cause undesired operation of the device."

- French:"

Le présent appareil est conforme aux CNR d'Industrie Canada applicables aux appareils radio exempts de licence. L'exploitation est autorisée aux deux conditions suivantes :

- (1) l'appareil ne doit pas produire de brouillage, et
- (2) l'utilisateur de l'appareil doit accepter tout brouillage radioélectrique subi, même si le brouillage est susceptible d'en compromettre le fonctionnement."

Warning: Changes or modifications not expressly approved by the party responsible for compliance could void the user's authority to operate the equipment.

NOTE: This equipment has been tested and found to comply with the limits for a Class B digital device, pursuant to IC Rules. These limits are designed to provide reasonable protection against harmful interference in a residential installation. This equipment generates uses and can radiate radio frequency energy and, if not installed and used in accordance with the instructions, may cause harmful interference to radio communications. However, there is no guarantee that interference will not occur in a particular installation. If this equipment does cause harmful interference to radio or television reception, which can be determined by turning the equipment off and on, the user is encouraged to try to correct the interference by one or more of the following measures:

Reorient or relocate the receiving antenna.

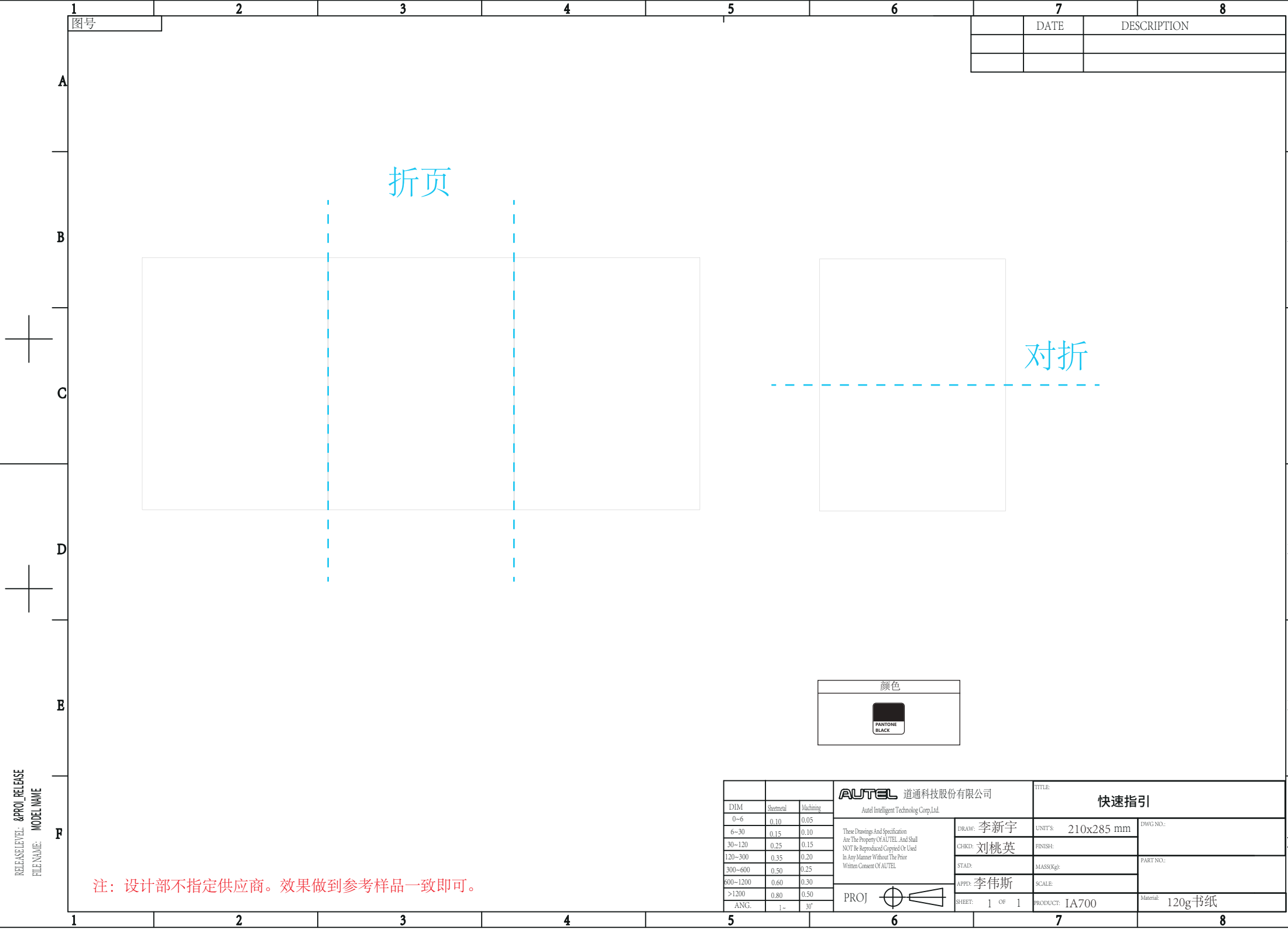
Increase the separation between the equipment and receiver.

Connect the equipment into an outlet on a circuit different from that to which the receiver is connected.

Consult the dealer or an experienced radio/TV technician for help.

IC Radiation Exposure Statement:

This equipment complies with IC radiation exposure limits set forth for an uncontrolled environment. This equipment should be installed and operated with minimum distance 20cm between the radiator & your body.



图号

DATE

DESCRIPTION

折页


对折

颜色



RELEASE LEVEL: &PROJ RELEASE
FILE NAME: MODEL NAME

注：设计部不指定供应商。效果做到参考样品一致即可。

			AUTEL 道通科技股份有限公司 Autel Intelligent Technology Corp.Ltd.		TITLE: 快速指引		
DIM	Sheetmetal	Machining	These Drawings And Specification Are The Property Of AUTEL. And Shall NOT Be Reproduced Copied Or Used In Any Manner Without The Prior Written Consent Of AUTEL	DRAW: 李新宇	UNIT'S: 210x285 mm	DWG NO.:	
0~6	0.10	0.05		CHKD: 刘桃英	FINISH:	PART NO.:	
6~30	0.15	0.10		STAD:	MASS(Kg):		
30~120	0.25	0.15		APPT: 李伟斯	SCALE:		
120~300	0.35	0.20		PROJ 	SHEET: 1 OF 1		PRODUCT: IA700
300~600	0.50	0.25					
600~1200	0.60	0.30					
>1200	0.80	0.50					
ANG.	1~	30°					