

SHENZHEN DENYO ELECTRONIC CO.,LTD

16D, Bld3, Dushi Yangguang, Chegongmiao, Futian, Shenzhen, China

TEL : 86-755-82048759 FAX: 86-755-82046879

Sep.22,2008

Responses to inquiry for the FM Transmitter (FCC ID: WPAFM-01)

1) How does this device operate?

The device is operated as 88.1MHz -107.9MHZ FM transmitter and powered by 12VDC.

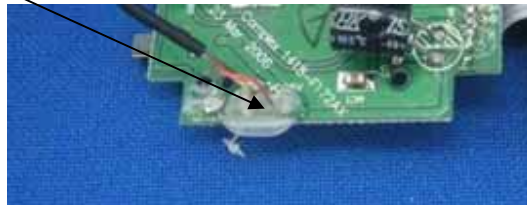
It transmit the audio signal from a external audio source such as MP3 player by a FM transmitter tuned on 88.1MHz and the audio signal can be received by a common FM Broadcasting Radio which is tuned to the same transmitted frequency of the FM transmitter and regenerate the transmitted signal through the FM Broadcasting Radio.

2) Provide information on the device and its antenna.

The antenna is a dipole antenna and installed with the audio input wire within the audio input cable attached with device .

(please see the attached picture)

antenna



3) How is it installed?

It is very easy to install. It is powered by 12VDC . Plug the unit into cigaratte lighter in you car.

4) What test procedure was used?

ANCI C63.4:2003

SHENZHEN DENYO ELECTRONIC CO.,LTD

16D, Bld3, Dushi Yangguang, Chegongmiao, Futian, Shenzhen, China

TEL : 86-755-82048759 FAX: 86-755-82046879

5) If tested in a car, how was it configured?

Not tested in a car, it was tested in a semi-anechoic chamber.

6) Was the tuning range properly verified? The test lab should indicate in the report that the tuning controls were manually adjusted to verify maximum tuning range.

88.1-107.9MHZ.

7) Was the bandwidth properly tested with maximum audio input? The test lab should describe the audio input signal (use a typical audio file from a typical device) -

DO NOT use 1kHz tone from signal generator as specified under ETSI EN 301 357-1) The maximum output Level of the typical device, ipod mp3 player is used.

8) Does the device operate in a vehicle? Please state that this was verified.

It was not test in a vehicle.

9) Provide the test report

Provided