

TECHNICAL SUPPORT

For additional features and details please refer to the full User Manual located on the Smartparts website, www.spx8wifi.com.

Technical Support is available via:

Smartparts Website at www.digitalframehelp.com

Technical support hotline at **1.888.796.2749**

Technical support email at techsupport@smartpartsproducts.com

WARRANTY

Smartparts, Inc. warrants its digital picture frames against manufacturing defects for a period of 90 days from date of purchase. For warranty claims, please visit our website at www.smartpartsproducts.com or call **1.888.796.2749**.

©2008 Smartparts, Inc. All rights reserved.
Windows Live™ is a registered trademark of Microsoft Corporation in the United States and other countries.
The Wi-Fi CERTIFIED Logo is a certification mark of the Wi-Fi Alliance.
All other trademarks are the property of their respective owners.

7

USING YOUR WiFi SPX8WF



1. EXTERNAL MEMORY CARDS – Simply insert your memory card into the memory card slot and/or the USB drive into the USB port located on the side of the frame. The frame will automatically start a picture slide show. The frame supports the following memory cards: Compact Flash (CF), Secure Digital (SD), Secure Digital High Capacity (SDHC), MultiMedia Card (MMC), Memory Stick (MS, MS Pro, MS Duo), and xD Picture Card.

2. VIEWING YOUR PICTURES – To view pictures from the internal memory, USB flash drive, or memory cards, from the **Main Menu**, highlight **"My Photos"** on the left pane, and press **OK**. Using the **Right** or **Left** buttons highlight the icon for Internal Storage, CF Card, Flash Card (SD, MS, xD), or USB Flash and press **OK**. Thumbnails of all available images and folders will appear. Select an image and press **OK** or the **Slideshow** button on the remote to start a picture slideshow. While in thumbnail view press **Menu** to copy or delete pictures.

3. LISTENING TO YOUR MUSIC – To play MP3 or WMA files on the frame, from the **Main Menu** highlight **"My Music"** on the left pane and press **OK**. Select your memory type and press **OK**. A list of available MP3 or WMA files will appear, select the song and press **OK**. To view a full-screen slideshow with music, press **OK** again. Use **Vol+** and **Vol-** to increase or decrease volume. Press **Up** or **Down** to skip to the next song.

8

4. RETRIEVING EMAILED PICTURES - Press the **Email** button on the remote to manually retrieve emails. The frame will check for new emails. The frame will automatically display a slideshow of the emailed pictures after receiving and saving the pictures in the appropriate folders. The frame will prompt you to Accept or Reject any new email addresses, and keep this information stored for friendly email addresses on the frame.

5. VIEWING EMAILED PICTURES – Hit the **Home** button on the remote control to go to the **Main Menu**. Select **"My Emails"** on the left pane, press **OK**. Press the **Down** button to select **"Inbox"** and press **OK**. A thumbnail view of folders will appear for each person that you have received mail from. Select a folder and press **OK**. A thumbnail view of pictures in the selected folder will appear. Press **OK** or **Slideshow** button to start a picture slideshow.

6. CONNECTING TO YOUR WINDOWS LIVE™ COLLECTION – By default your frame is already set up to receive a daily feed of Windows Live Framelt Collection. Windows Live Framelt is a service provided by Microsoft to share your pictures, stay up-to-date with weather, news, traffic and much more. To get a preview of what you get with Windows Live, go to the **Main Menu** on your frame (wireless network must be connected), select **"Windows Live"**, press **OK**. Select the **Framelt** icon and press **OK**. You will see a thumbnail view of folders for the different collections, select one and press **OK**. The frame will load the latest images from Windows Live and display a slideshow of these images on your frame. Visit <http://frameit.live.com> for additional information on Windows Live Framelt. Refer to the User Manual for details on how to register your own Windows Live account with your frame.

9

DESKTOP SOFTWARE INSTALLATION

Smartparts Desktop Software is designed to help you find, optimize and transfer pictures into the frame.

Things you can do with the desktop software:

- Wirelessly transfer pictures from your computer to the frame
- Register your Windows Live Framelt account on the frame
- Correct picture orientation and red eye
- Enhance/sharpen picture quality
- Scale down file size to maximize storage capacity
- Apply Smart Fit to increase the viewing area on the frame

HOW TO INSTALL

The software's installation file is preloaded on the frame's internal memory. To install it on your Windows computer follow these easy steps:

1. Power the frame **OFF**
2. Connect the frame to your computer using the supplied USB cable
3. Power the frame **ON**, wait 5 – 10 seconds for the computer to recognize the frame as a new device.
4. On your computer, go to START menu and select MY COMPUTER. MY COMPUTER window will appear on the screen, double-click on the drive label that matches the model number of your frame. The model number usually begins with "SP".
5. A new window will open, locate the SETUP file and double click it.
6. Follow the on-screen instructions to complete the installation.

After the software is installed on your computer, remove the SETUP file from the frame's internal memory to allow more room for pictures. You can move the SETUP file to your hard-drive if you'd like or simply delete it.

10

IMPORTANT SAFETY PRECAUTIONS

Always follow these basic safety precautions when using your digital picture frame. This will reduce the risk of fire, electric shock, and injury.

WARNING: To reduce the risk of fire or shock hazard, do not expose this product to rain or moisture.

WARNING: To prevent the risk of electric shock, do not remove the cover. There are no user-serviceable parts inside. Refer all servicing to qualified personnel.

- The digital picture frame is for indoor use only.
- Unplug the digital picture frame before performing care and maintenance.
- Do not block the ventilation holes on the back of the digital picture frame at any time.
- Keep your digital picture frame out of direct sunlight and heat sources.
- Protect the power cord. Route power cords so that they are not likely to be walked on or pinched by items placed on or against them. Pay particular attention to the point where the cord attaches to the digital picture frame.
- Only use the AC adapter included with the digital picture frame. Using any other power adapter will void your warranty.
- Unplug the power cord from the outlet when the unit is not in use.



This device complies with Part15 of the FCC Rules. Operation is subject to the following two conditions:
(1) this device may not cause harmful interference and
(2) this device must accept any interference received, including interference that cause undesired operation.

This Class B digital apparatus complies with Canadian ICES-003

11



SPX8WF/EE
WiFi
**DIGITAL
PICTURE FRAME
SETUP GUIDE**

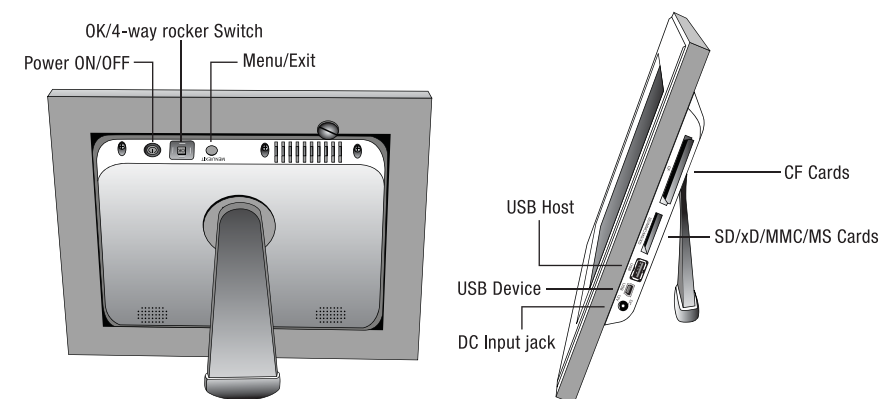
For additional features and details please refer to the full User Manual located on the Smartparts website, www.spx8wifi.com.

PREPARING FOR INSTALLATION

WHAT'S INCLUDED

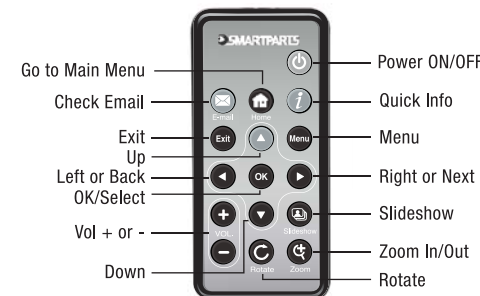
- Smartparts 8" WiFi Digital Picture Frame (SPX8WF)
- Remote Control
- Stand
- Power Adapter
- Setup Guide
- Smartparts Desktop Software
- USB cable

GETTING STARTED

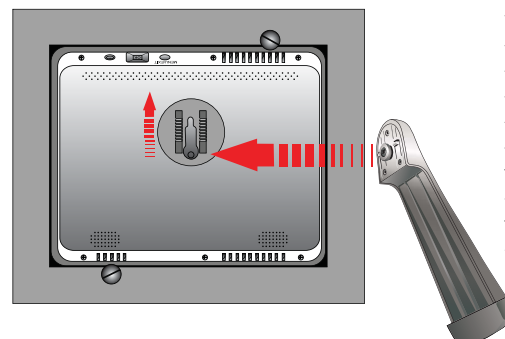


1

REMOTE CONTROL



ATTACH THE STAND OR WALL MOUNT

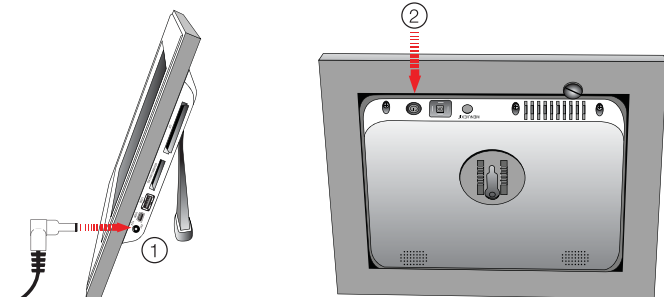


Your frame can be placed on a table top or any flat surface by attaching the stand supplied. Simply align the round knob part of the stand to the round hole on the back of the frame and slide the stand in place. The stand can rotate 90 degrees if you like to set your frame vertically. The frame can also be hung on the wall.

2

POWER ON THE SPX8WF

Connect the AC power adapter to the frame and plug the adapter into an electrical outlet ①. The frame will start automatically. To power off the frame press the power button on the top of the frame for 3 seconds ② or the power button on the remote once.



SETUP WIZARD

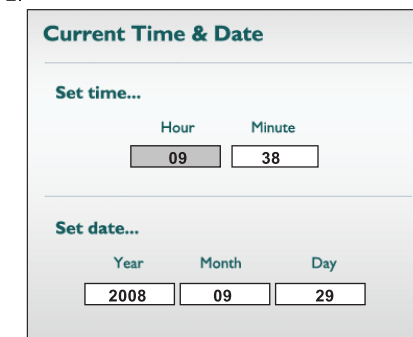
1. Press **OK** to start the Setup process.



This setup wizard will walk you through setting up your wireless network connection to the frame.

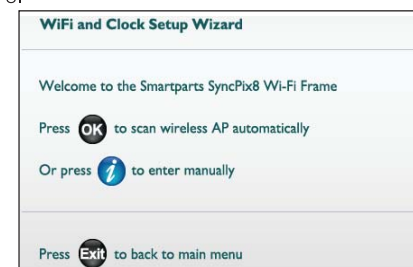
3

2.



Press the **Up** or **Down** buttons to change the hour, press the **Left** or **Right** buttons to jump from *hour* to *minute*. Press the **Right** button to jump down to set the date. Use **Up** or **Down** to change the numbers and **Left** or **Right** to jump from *year* to *month* to *day*, Press **OK** when you have completed setting the date and time.

3.



Press **OK** to allow the frame to scan for available wireless networks.

Note: It is highly recommended that both DHCP and SSID Broadcast are enabled on your home network for a quick and easy setup. If not, you can manually enter the network settings and/or the SSID of your wireless network by pressing the "i" (info) button on the remote control. You can also exit the setup wizard and go to Main Menu/Settings/Network.

4. A list of available networks will appear on the right pane. Using the **Up** or **Down** buttons select your preferred wireless network and press **OK**.

4

5. The frame will connect to your selected network. If the wireless network you are connecting to is using wireless security you will be prompted to enter the security key. Using the arrow keys on the remote control, select each letter or number and press **OK** on the remote. Once you complete entering all the characters, highlight **OK** and press **OK** on the remote. Allow about a minute for the frame to connect to your wireless network.



6. The setup is complete when you successfully connect to the wireless network.



5

SETTINGS

Network – Setup wireless network using any of the 4 methods: by scanning for available networks, manually entering your network information, Enter Internet protocol (TCP/IP) or WiFi Protected Setup (WPS).

Account Manager – Manages your "friendly" email address book of accepted and blocked email addresses.

Slideshow – Set slideshow transition time, transition effects and order in which the slideshow should play.

Music – Set Volume control and play order (sequential, repeat single, repeat all, shuffle)

Screen Saver – Select a screen saver for your frame to show calendar, automatically play slideshow or leave it off.

Date, Time, Sleep and Alarm – Set date, time, auto power off options and alarm on/off.

Brightness – Set the brightness level for your frame.

Frame name – Enter a personal frame name

Information – View basic information about the frame's firmware version, serial number, frame name, wireless network, Internet status, and Email Address

Setup Wizard – Walks you through initial setup process for wifi connection

Settings Reset – Restores the frame to factory defaults

6

Federal Communication Commission Interference Statement

This equipment has been tested and found to comply with the limits for a Class B digital device, pursuant to Part 15 of the FCC Rules. These limits are designed to provide reasonable protection against harmful interference in a residential installation. This equipment generates, uses and can radiate radio frequency energy and, if not installed and used in accordance with the instructions, may cause harmful interference to radio communications. However, there is no guarantee that interference will not occur in a particular installation. If this equipment does cause harmful interference to radio or television reception, which can be determined by turning the equipment off and on, the user is encouraged to try to correct the interference by one of the following measures:

- Reorient or relocate the receiving antenna.
- Increase the separation between the equipment and receiver.
- Connect the equipment into an outlet on a circuit different from that to which the receiver is connected.
- Consult the dealer or an experienced radio/TV technician for help.

This device complies with Part 15 of the FCC Rules. Operation is subject to the following two conditions: (1) This device may not cause harmful interference, and (2) this device must accept any interference received, including interference that may cause undesired operation.

FCC Caution: Any changes or modifications not expressly approved by the party responsible for compliance could void the user's authority to operate this equipment.

IMPORTANT NOTE:

FCC Radiation Exposure Statement:

This equipment complies with FCC radiation exposure limits set forth for an uncontrolled environment. This equipment should be installed and operated with minimum distance 20cm between the radiator & your body.

This transmitter must not be co-located or operating in conjunction with any other antenna or transmitter.