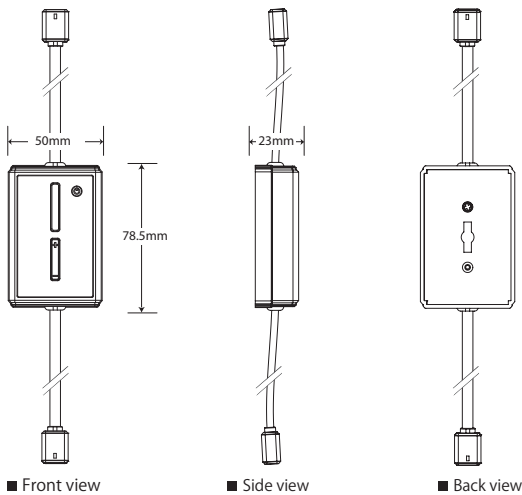


CabLED™ Accessories Dimension

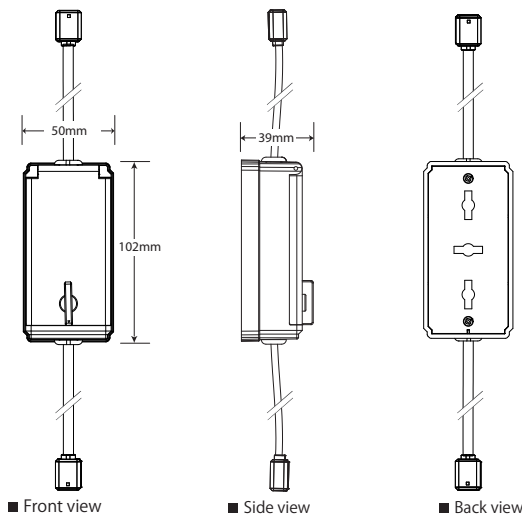
Inline ON/OFF Dimmer Switch

Connects to PS-Link Connector. Offers full dimming range, fades the CabLED™ system on and off at last selected dimming level.



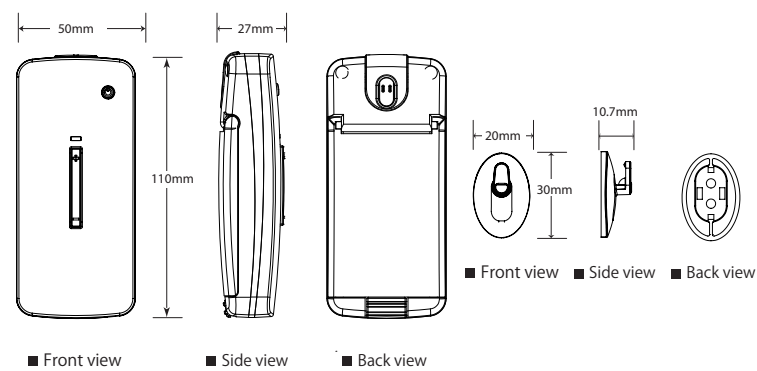
RF Receiver for RF Remote Dimmer OR RF Light/Motion Sensor

2.4 GHz RF Receiver connects to PS-Link Connector and can be synchronized with either the Remote Dimmer OR Light/Motion Sensor.



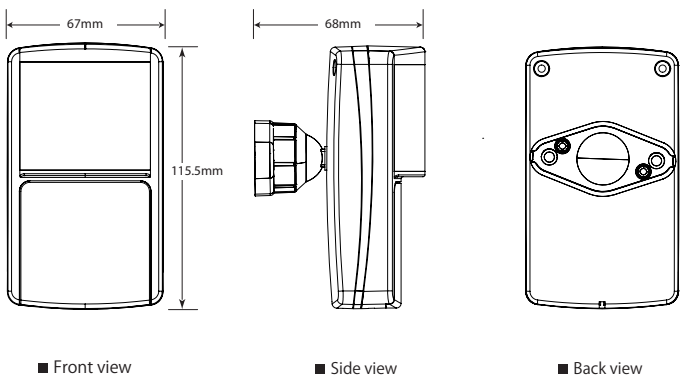
RF Remote Dimmer

Wireless 2.4 GHz Remote Dimmer fades CabLED™ system on/off, offer full dimming range and retains last dimming level. Must be used with at lease one RF Receiver and can be synchronized with up to ten RF Receivers



RF Light/Motion Sensor

Wireless 2.4 GHz Light/Motion Sensor activates CabLED™ system by sensing motion, light or both. Must be used with at least one RF Receiver and can be synchronized with up to ten RF Receivers.

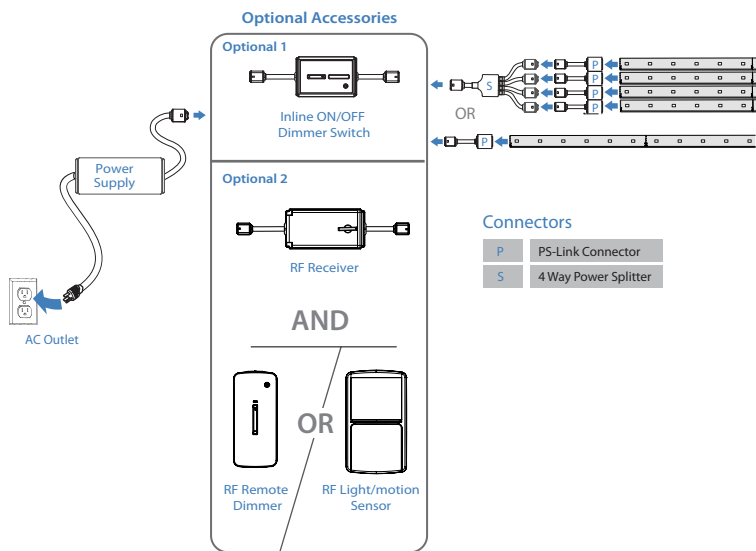


CabLED™ Strip Specification

	Inline ON/OFF Dimmer Switch	RF Receiver	RF Remote Dimmer	RF Light/Motion Sensor
Input Voltage	24V	26V	3V	3V
Standby Current	15mA	50mA	33uA	50uA
Input Current	4A/25m	4A/25m	15mA	20mA
Input Power	96W/25m	96W/25m	99uW	150uW
RF Distance	-----	30m	30m	30m
Detection Angle	-----	-----	-----	160°
Detection Distance	-----	-----	-----	12m
IP Rating	IP65			
Operating Temp.	-20° ~ 50°			
StorageTemperature	0° ~ 80°			
Weight	85g	120g	85g	85g

CabLED™ Aecessories Layout

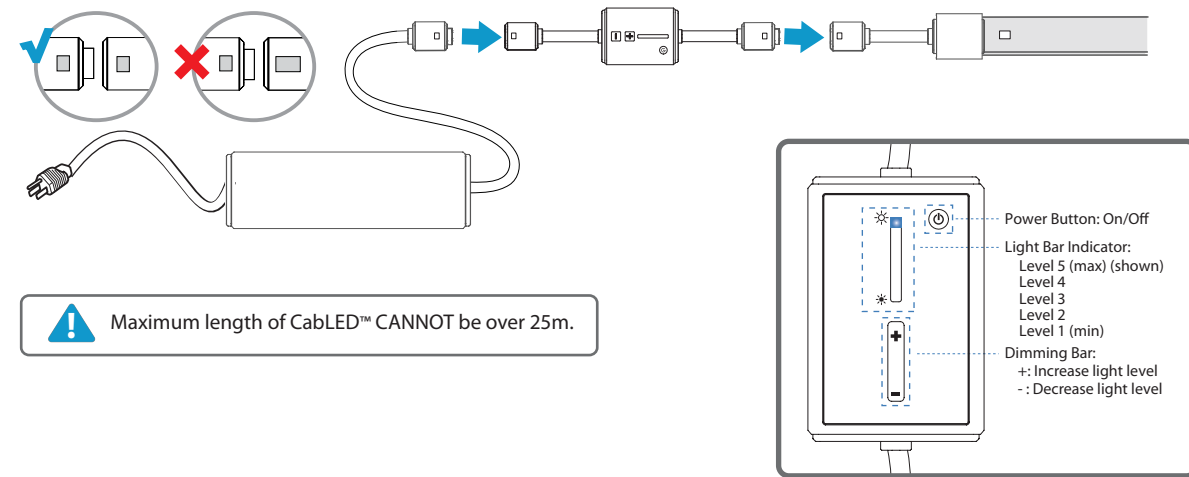
This diagram illustrates possible layouts for the CabLED™ 8000 Series Accessories. Refer to the Component Overview for additional information.



Install Inline ON/OFF Dimmer Switch

Connect Inline ON/OFF Dimmer Switch

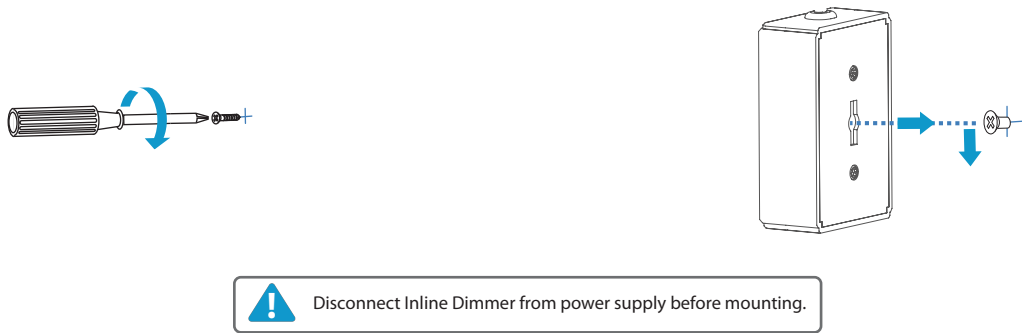
The Inline ON/OFF Dimmer Switch fits between the PS-Link Connector and the power supply. Unplug the power supply from the AC outlet before connecting. Match the icons on the PS-Link Connector with the icons on the Inline Dimmer.



Mount Inline ON/OFF Dimmer Switch

Position Inline ON/Off Dimmer Switch between power supply and PS-Link Connector. The Inline Dimmer uses a keyhole mounting system designed to be mounted vertically.

- A Screw M4 screw partially into surface, leaving 1/4 inch to hang the Inline Dimmer. B Fit center of keyhole in back of Inline Dimmer over screw and slide down to mount.

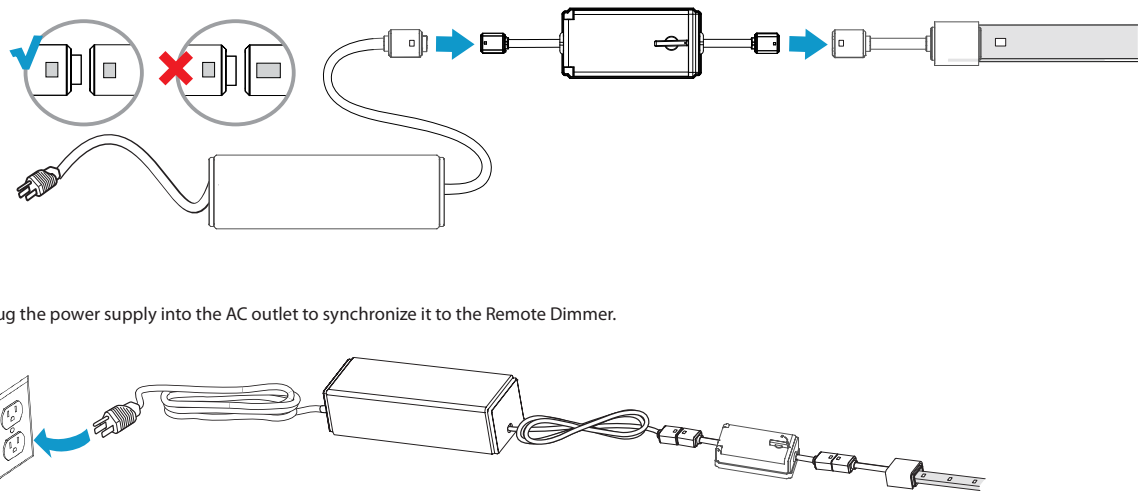


Install RF Remote Dimmer

The wireless Remote Dimmer works only with CabLED™ Receivers. Both the Dimmer and Receiver are rated IP65, completely weather resistant but not to be submerged in water. You may use one Dimmer to control up to ten CabLED™ systems, each connected to its own CabLED™ Receiver. The Dimmer MUST be synchronized with each Receiver.

Install RF Remote Dimmer

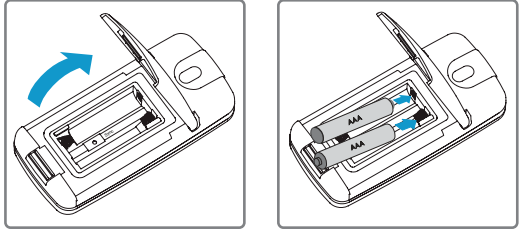
Unplug the power supply from the AC outlet before connecting. Install the receiver between the power supply and the PS-Link Connector by matching the icons on the plugs.



Install RF Remote Dimmer (Continued)

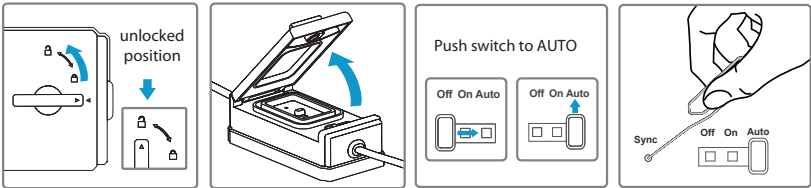
Install Battery in the RF Remote Dimmer

Open the back cover of the Remote Dimmer and Insert 2 AAA batteries matching the polarity (+ and -) markings on the batteries with the indicators in the battery compartment.

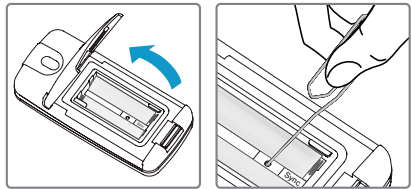


Synchronize One RF Receiver with RF Remote Dimmer

- A** Unlock the receiver case and open it to access the sync switch. Move the power button to AUTO. Use a pin or straightened paper clip to push the sync button.

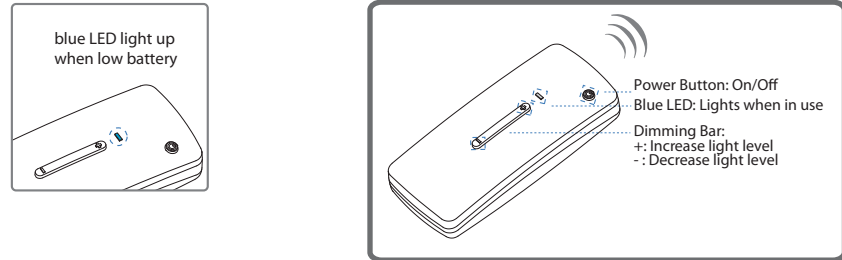


- B** Open the battery compartment on the back of the Remote Dimmer to access the sync switch. Use a pin or straightened paper clip to push the sync button.



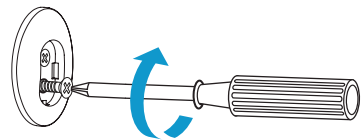
NOTE: Maximum synchronize 5 Motion Sensors and Remotes Dimmer with one Receiver in total.

When the CabLED™ strip start blinking, the Remote Dimmer is successfully synchronized with the Receiver. Blue LED blink if not success synchronized in 30 sec. Press Sync button 6 sec in paring to reset.

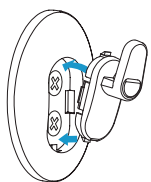


Mount RF Remote Dimmer

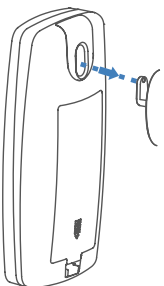
- A** Secure base with two M3 screws. Insert hook into base at an angle and then push to snap into place.



- B** Insert hook at angle.



- C** Hang remote onto hook.

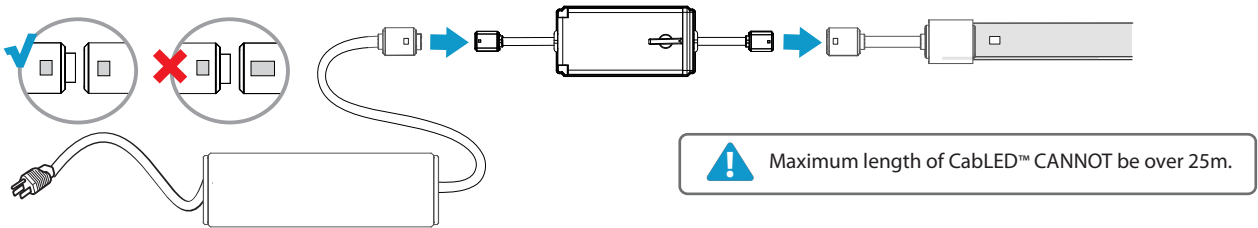


Install RF Light/Motion Sensor

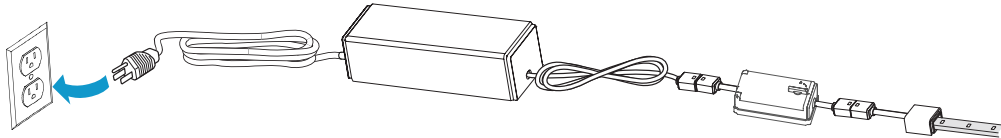
The wireless Motion Sensor works only with CabLED™ Receivers. Both the Dimmer and Receiver are rated IP65, completely weather resistant but not to be submerged in water. You may use one Dimmer to control up to ten CabLED™ systems, each connected to its own CabLED™ Receiver. The Sensor MUST be synchronized with each Receiver.

Install RF Remote Dimmer

Unplug the power supply from the AC outlet before connecting. Install the receiver between the power supply and the PS-Link Connector by matching the icons on the plugs.

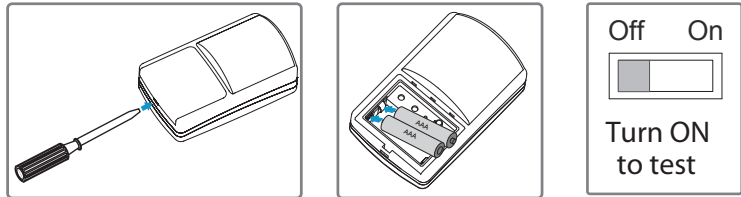


Plug the power supply into the AC outlet to synchronize it to the Remote Dimmer.



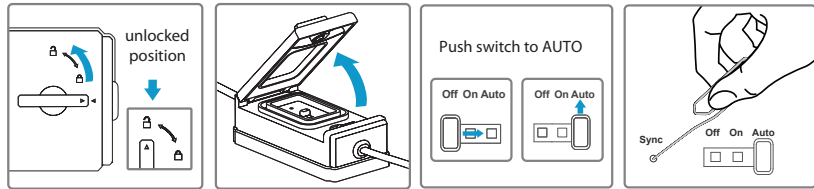
Install Batteries in the RF Light/Motion Sensor

Open the front battery compartment cover using a flat screw driver. Insert 2 AAA batteries matching the polarity (+ and -) markings on the batteries with the indicators in the battery compartment.

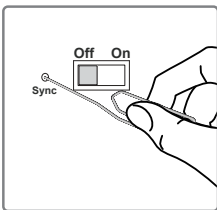
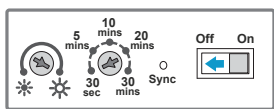


Synchronize One RF Receiver with RF Light/Motion Sensor

- A** Unlock the receiver case and open it to access the sync switch. Move the power button to AUTO. Use a pin or straightened paper clip to push the sync button.

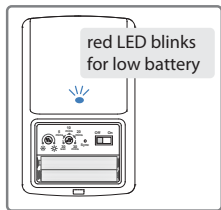


- B** With the battery compartment on the front of the Light/Motion Sensor, access the controls. Turn the power ON. Use a pin or straightened paper clip to push the sync button.



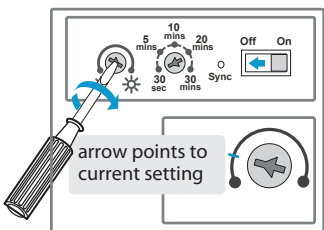
When the CabLED™ strip start blinking, the Motion Sensor is successfully synchronized with the Receiver. Press Sync button 6 sec in paring to reset.

NOTE: Maximum synchronize 5 Motion Sensors and Remotes Dimmer with one Receiver in total.



Set the RF Light/Motion Sensor

Adjust the time delay and ambient light setting by using a flat screw driver. Turn each dial until the arrow points to desired setting.



The time delay will determine how long the strip will be lit after the sensor is activated. There are five settings, between 5 seconds and 30 minutes.

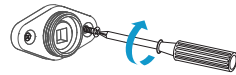


The ambient light photocell setting detects the amount of natural light, it can be set to interact with Motion activities.

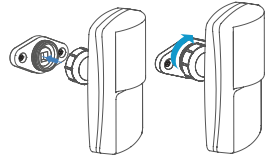
NOTE: The ambient light control can be set between complete darkness (minimum) and moderate (maximum). Adjust the setting and test it outside until you have reached the desired level of darkness needed before the strip is activated by motion.

Mount RF Light/Motion Sensor

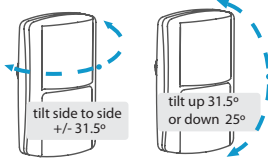
- A** Position base for Motion Sensor at the entrance of the area to be lit. Secure with two M3 screws.



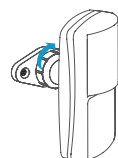
- A** Fit ring on back of Motion Sensor onto base and partially screw together.



- A** Adjust the Sensor to desired angle.



- A** Tighten ring completely to secure.

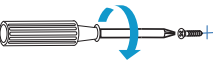


Mount RF Receiver

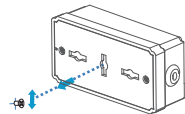
Follow these instructions to mount each RF Receiver to be used with either the Remote Dimmer or the Light/Motion Sensor.

Mount Horizontally

- A** Screw two M4 screw partially into surface, leaving 1/4 inch to mount the receiver.

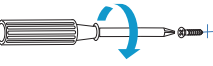


- A** Fit center of keyholes in back of receiver over each screw and slide to one side to secure.

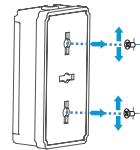


Mount Horizontally

- A** Screw two M4 screw partially into surface, leaving 1/4 inch to mount the receiver.



- A** Fit center of keyholes in back of receiver over each screw and slide to one side to secure.



! Disconnect Receiver from power supply before mounting.

- !** IMPORTANT: The CabLED™ 8000 system is designed to work ONLY with the power supplies, connectors, mounting options, and accessories listed. Do NOT substitute other products as they may damage your system.
- !** IMPORTANT: Do not plug into outlet until power supply is secured. Place power supply near outlet and off the ground so there is no chance of it being submerged in water.
- !** IMPORTANT: There is only one way to connect the PS-Link Connector to the power supply. Make certain the icons match before connecting. Connect the power supply to the PS-Link Connector BEFORE plugging the power supply into the AC outlet.
- !** IMPORTANT: Risk of fire or electric shock - Do not use where directly exposed to water.
- !** IMPORTANT: To prevent wiring damage or abrasion, do not expose wiring to edges of sheet metal or other sharp objects.
- !** IMPORTANT: This product is not suitable for mounting on a flammable surface.
- !** IMPORTANT: Do not install when it is raining.

This device complies with Part 15 of the FCC Rules. Operation is subject to the following two conditions:
(1) This device may not cause harmful interference and (2) This device must accept any interference received, including interference that may cause undesired operation.

POWER SOURCE
Do not modify the plug provided with the product – If it will not fit the outlet, have a proper outlet installed by a qualified electrician. Damaged or deformed power cords are hazardous and should be replaced immediately by a qualified service technician.

OPERATION
Unplug the unit and the AC power adapter from the electrical outlet during electrical storms or when unused for long periods of time to prevent damage.

LOCATION
Place accessories well above the ground or in an area they will NOT be submerged in water or other liquids. Keep all components away from extreme heat sources such as heating vents, radiators, electric heaters and fire pits.

INSTALLATION
Products should be installed in accordance with the user manual, current electrical codes and/or the current National Electric Code (NEC). To avoid electrical shock and/or damage to the system, do not handle the components with wet hands. Do not use if there is any damage to the light or cord insulation. Inspect periodically.

CLEANING
Clean only with a dry or slightly damp cloth. Do not use any acid or alkaline liquids, cleansing agents or solvents. Unplug the system from the wall outlet before cleaning.

SERVICE
Always remove the AC power adapter from the electrical outlet before adjusting or inspecting the system. Inspect your system periodically. Do not open the cabinets of accessories or power supply. There are no user-serviceable parts. Opening the cabinets may present a shock hazard, and any modification to the product will void your warranty.
*Technical data are based on optimum conditions and actual performance may vary.

Warranty : Please contact local Optiled office or distributors for more information.

The OPTILED® logo is a registered trademark.

The CABLED® logo is a registered trademark.

The CREE® logo is a trademark.

© 2011 OPTILED, all rights reserved.

Country of origin : China

OPTILED

Email: info@optiled.com

Website: www.optiled.com

CREE
LEDs

