

*FIGURE 1*  
*CHROME 530 GRAPHIC CARD (M/N: S3G002)*  
*MAIN BOARD CHIP FAN REMOVED*

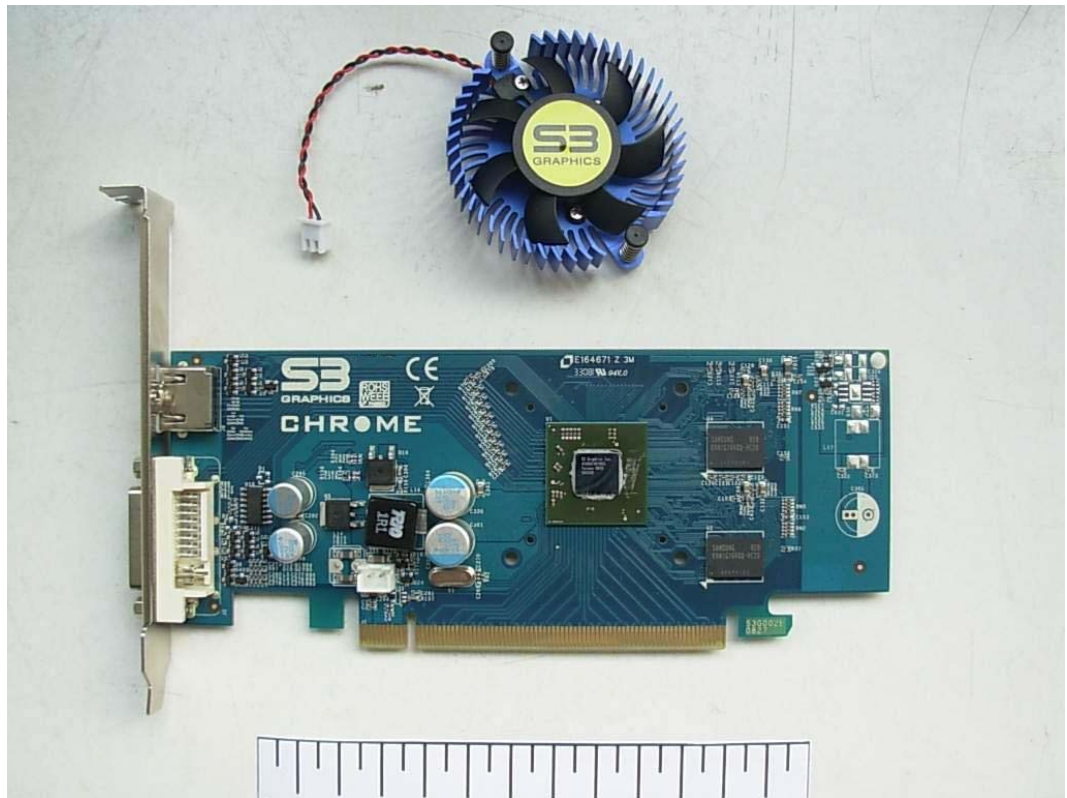
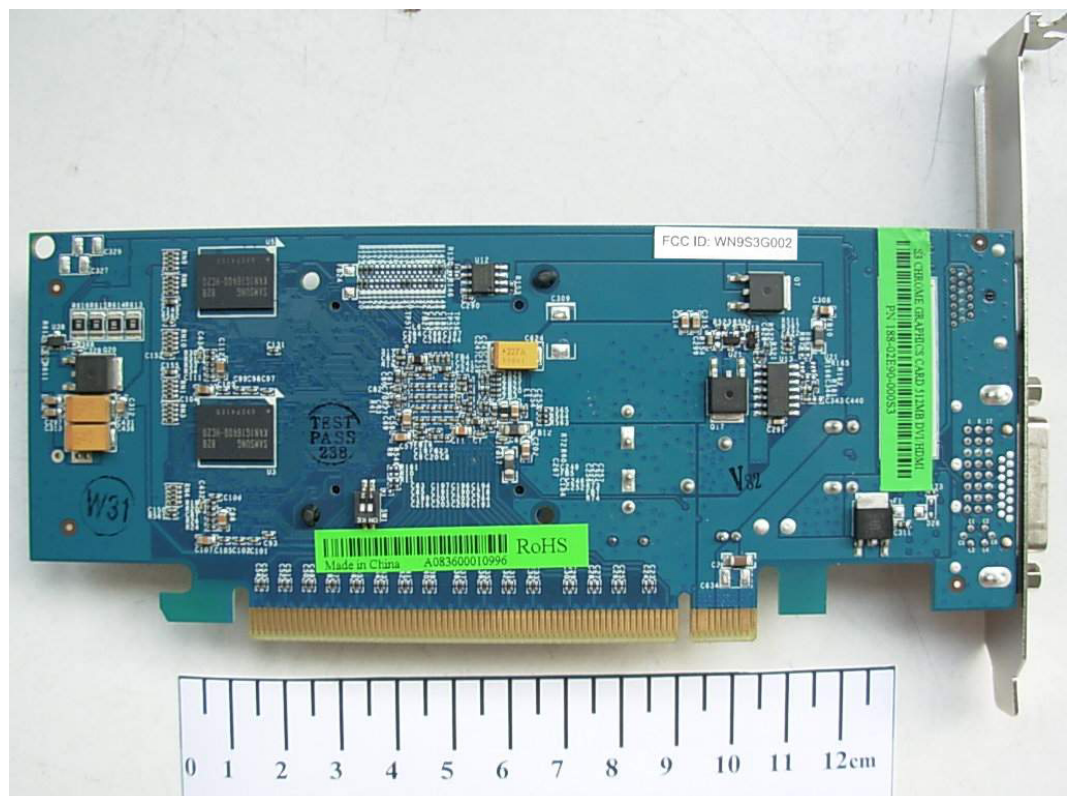


FIGURE 2  
CHROME 530 GRAPHIC CARD (M/N: S3G002)  
MAIN BOARD (COMPONENT SIDE)



FIGURE 3  
CHROME 530 GRAPHIC CARD (M/N: S3G002)  
MAIN BOARD (SOLDERED SIDE)





*FIGURE 4*  
*CHROME 530 GRAPHIC CARD (M/N: S3G002)*  
*CHIP ON MAIN BOARD*



*FIGURE 5*  
*CHROME 530 GRAPHIC CARD (M/N: S3G002)*  
*CRYSTAL ON MAIN BOARD*

