



 **Bellman & Symfon®**
DESIGN FOR EARS



BE1310 Visit Smart hub

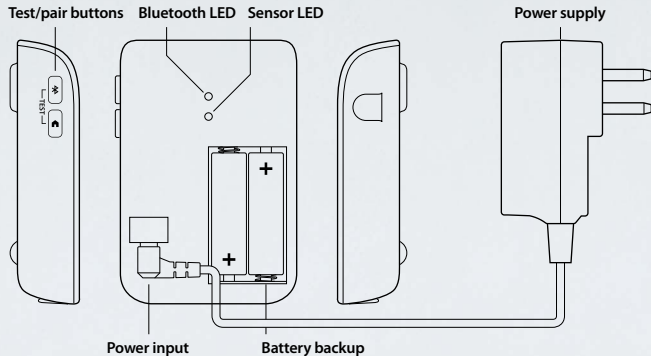


Contents

Setting up the Smart hub	3	Setting up monitors	11
Before you start	4	Telephone monitor	13
Installation	5	Doorbell monitor	17
Pairing	6	Room monitor	21
Testing	8	Personal alarm	25
Welcome home signal	9	Smoke alarm	29
Troubleshooting	10	Appendix	34



Overview



Before you start

The Visit Smart hub is a wireless communications hub that connects your home to your hearing aids. It will help you to hear when the doorbell or phone rings, when your loved one needs you or if the smoke alarm goes off.

Compatible streamers and hearing aids

The Smart hub requires separate monitors and works with easyTek™ or miniTek™ streamers and specific wireless Siemens hearing aids. Your Hearing care professional will advise you on the compatible models.

Optimizing the Smart hub location

To ensure maximum Bluetooth® coverage, install the Smart hub centrally in the premises, ideally in the room where you spend most of your time.

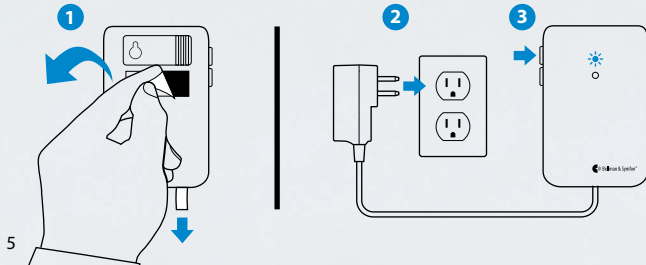


Caution. Read this user guide thoroughly and completely and follow the safety information to avoid damage or injury.



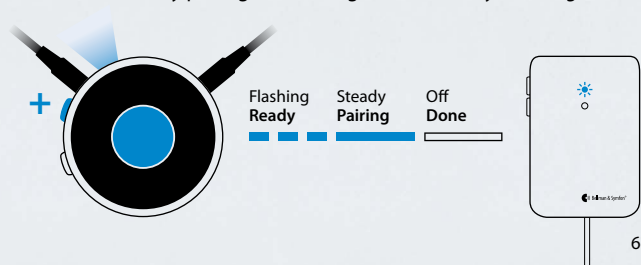
Setting up the Smart hub

- 1 Pull the battery tab to start the unit. Remove the protective film from the Velcro® and mount the Smart hub on the wall.
- 2 Plug the power supply into the mains outlet.
- 3 Press and hold the top button until the top led starts to blink in blue.





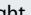
Pairing with easyTek™

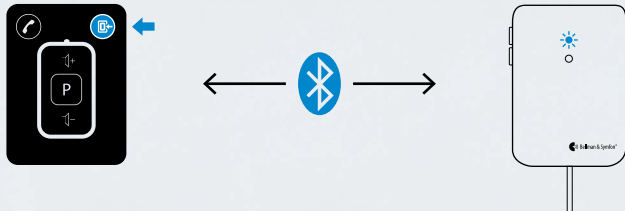
- ▶ Press and simultaneously on easyTek until easyTek's blue LED starts to flash. The LED will then stay lit for 5 seconds during the pairing procedure. When pairing is completed the LED will turn off.
- ▶ If no steady light appears, ensure that easyTek is within range from the Smart hub and try pairing the units again, *see the easyTek user guide*.





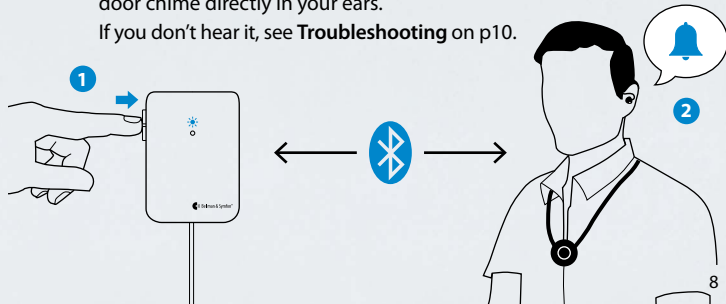
Pairing with miniTek™

- 1 Press and hold the  button on your miniTek for 5s to initiate pairing. All buttons will then light up for 3s to show that it's in pairing mode.
- 2 While searching for a Bluetooth® device, the  button will start to blink. When pairing is completed, the  button will light up for 3s. If it doesn't light up, ensure that miniTek is within range from the Smart hub and try pairing the units again, see the miniTek user guide.



Testing the connection

- 1 Press the two buttons on the left side of the Smart hub simultaneously to test the Bluetooth® connection.
- 2 Your hearing aids will temporarily mute the sound, and you will hear a door chime directly in your ears. If you don't hear it, see **Troubleshooting** on p10.





Welcome home signal

When you get home, for example after work, the Visit Smart hub will automatically reconnect your hearing aids to the monitors in your house (provided that the streamer is on).

Within minutes you will hear an acknowledge signal that tells you that the system is up and running.

If you don't hear the signal, see **Troubleshooting** on page 10.

Troubleshooting

If	Follow this checklist
I hear no door chime sound in my hearing aids when I press the Smart hub test buttons <i>or</i> I hear no greeting signal when I arrive at home	<ul style="list-style-type: none">✓ Check that the Smart hub is connected to mains power, see Set up on page 5.✓ Check that the streamer is within range and paired with the Smart hub, see Pairing on page 6–7.✓ Check that your hearing aids are paired with easyTek or miniTek see Pairing Bluetooth® devices in the separate user guides.✓ Check that your hearing aids are switched on, the batteries are fresh and that the volume setting is correct, see the hearing aid user guide.
The Smart hub's lower LED is pulsating in red	<ul style="list-style-type: none">■ The streamer is out of range or not paired with the Smart hub, see Pairing on page 6–7.

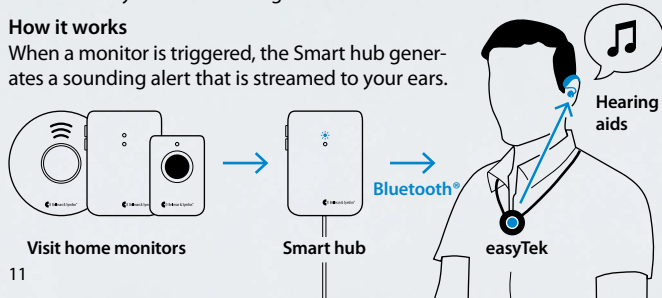


Setting up monitors






The Visit Smart hub supports a wide variety of Visit monitors that will help you hear the signals in your home. The monitors are paired to your Smart hub from factory and take only minutes to install. Just add any Visit monitor and you'll be receiving alerts in moments.

How it works

When a monitor is triggered, the Smart hub generates a sounding alert that is streamed to your ears.



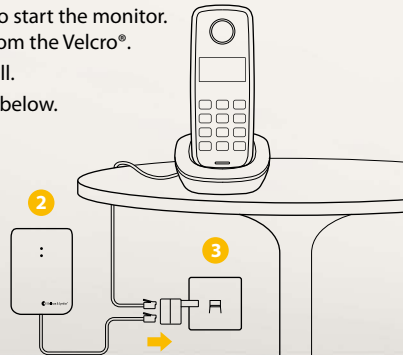
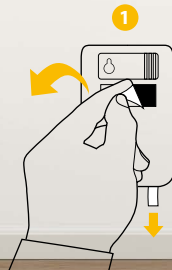
Supported monitors

	Telephone monitor	13
	Doorbell monitor	17
	Room monitor	21
	Personal alarm	25
	Smoke alarm	29

Stay in touch with
family & friends.

Setting up the Telephone monitor

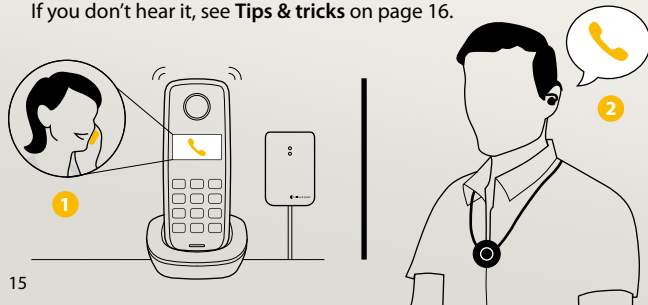
- 1 Remove the battery pull tab to start the monitor.
Remove the protective film from the Velcro®.
- 2 Mount the monitor on the wall.
- 3 Connect the cables as shown below.



Testing the connection

- 1 Ask a friend or neighbor to call your landline telephone.
- 2 When the telephone rings, your hearing aids will temporarily mute the sound, and you will hear a ring signal directly in your ears.

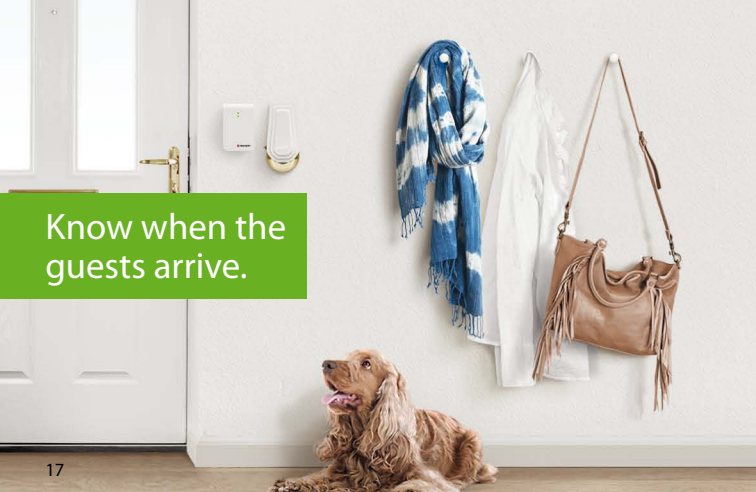
If you don't hear it, see **Tips & tricks** on page 16.



Tips & tricks



If	Try this
I hear no ring signal in my hearing aids when the landline telephone rings.	<ul style="list-style-type: none">■ Move closer to the Smart hub to make sure you are within its operating range.■ Press both test buttons on the Telephone monitor simultaneously. If you don't hear a ring signal in your ears, check the monitor's batteries and make sure it's properly installed, see Setting up the Telephone monitor on p14.■ Follow the Checklist on p10 to test that the system is up and running and that your streamer and hearing aids are functioning properly.
I hear ring signals in my hearing aids for no obvious reason.	<ul style="list-style-type: none">■ There is probably a nearby Visit system that triggers your system. Change the radio key on all units, see Changing the radio key in the Appendix on p35.



Know when the guests arrive.

Setting up the Doorbell monitor



- 1 Remove the battery pull tab to start the monitor.
Remove the protective film from the Velcro®.
- 2 Mount the monitor to the left of the door chime, as close as possible.

