

**ELECTROMAGNETIC EMISSIONS COMPLIANCE REPORT****UN-INTENTIONAL RADIATOR CERTIFICATION TO  
FCC PART 15 SUBPART B REQUIREMENT***OF*

**Product Name:** GSM MOBILE PHONE

**Brand Name:** COSUN

**Model Name:** COSUN2100

**Report No.:** ER/2008/80008

**Issue Date:** Sep. 04, 2008

**FCC Rule Part:** Part 15 B

**Prepared for:** HUIZHOU QIAOXING TELECOMMUNICATION  
INDUSTRY CO.,LTD  
QIAOXING SCIENCE AND TECHNOLOGY  
INDUSTRIAL PARK,TANGQUAN HUIZHOU  
CITY,GUANGDONG PROVINCE,CHINA

**Prepared by:** SGS Taiwan Ltd.  
Electronics & Communication Laboratory  
No. 134, Wu Kung Rd., Wuku Industrial Zone,  
Taipei County, Taiwan



*Note: This report shall not be reproduced except in full, without the written approval of SGS Taiwan Ltd. This document may be altered or revised by SGS Taiwan Ltd. personnel only, and shall be noted in the revision section of the document.*

Unless otherwise stated the results shown in this test report refer only to the sample(s) tested. This test report cannot be reproduced, except in full, without prior written permission of the Company. 除非另有說明，此報告結果僅對測試之樣品負責。本報告未經本公司書面許可，不可部份複製。

This Test Report is issued by the Company under its General Conditions of Service which is available on request or accessible at [http://www.sgs.com/terms\\_and\\_conditions.htm](http://www.sgs.com/terms_and_conditions.htm). Attention is drawn to the limitation of liability, indemnification and jurisdiction issues defined therein. Any holder of this Test Report is advised that information contained hereon reflects the Company's findings at the time of its intervention only and within the limits of Client's instructions, if any. The Company's sole responsibility is to its Client and this document does not exonerate parties to a transaction from exercising all their rights and obligations under the transaction documents. Any unauthorized alteration, forgery or falsification of the content or appearance of this document is unlawful and offenders may be prosecuted to the fullest extent of the law.

## VERIFICATION OF COMPLIANCE

**Applicant:** HUIZHOU QIAOXING TELECOMMUNICATION INDUSTRY CO.,LTD  
QIAOXING SCIENCE AND TECHNOLOGY INDUSTRIAL  
PARK,TANGQUAN HUIZHOU CITY,GUANGDONG  
PROVINCE,CHINA

**Product Name:** GSM MOBILE PHONE

**Brand Name:** COSUN

**Model Name:** COSUN2100

**Model Difference:** N/A

**File Number:** ER/2008/80008

**Date of test:** Aug. 07, 2008 ~ Sep. 02, 2008

**Date of EUT Receive:** Aug. 06, 2008

## We hereby certify that:

The above equipment was tested by SGS Taiwan Ltd. The test data, data evaluation, test procedures, and equipment configurations shown in this report were made in accordance with the procedures given in ANSI C63.4 (2003) and the energy emitted by the sample EUT tested as described in this report is in compliance with conducted and radiated emission limits of FCC Rules Part 15B.

The test results of this report relate only to the tested sample identified in this report.

<b>Test By:</b>		<b>Date</b>	Sep. 04, 2008
<hr/>		<hr/>	
	Jason Wu / Asst. Supervisor		
<b>Prepared By:</b>		<b>Date</b>	Sep. 04, 2008
<hr/>		<hr/>	
	Gigi Yeh / Clerk		
<b>Approved By</b>		<b>Date</b>	Sep. 04, 2008
<hr/>		<hr/>	
	Vincent Su/Manager		

Unless otherwise stated the results shown in this test report refer only to the sample(s) tested. This test report cannot be reproduced, except in full, without prior written permission of the Company. 除非另有說明，此報告結果僅對測試之樣品負責。本報告未經本公司書面許可，不可部份複製。

This Test Report is issued by the Company under its General Conditions of Service which is available on request or accessible at [http://www.sgs.com/terms\\_and\\_conditions.htm](http://www.sgs.com/terms_and_conditions.htm). Attention is drawn to the limitation of liability, indemnification and jurisdiction issues defined therein. Any holder of this Test Report is advised that information contained hereon reflects the Company's findings at the time of its intervention only and within the limits of Client's instructions, if any. The Company's sole responsibility is to its Client and this document does not exonerate parties to a transaction from exercising all their rights and obligations under the transaction documents. Any unauthorized alteration, forgery or falsification of the content or appearance of this document is unlawful and offenders may be prosecuted to the fullest extent of the law. °

## Version

Version No.	Date	Description
00	Sep. 04, 2008	Initial creation of document

Unless otherwise stated the results shown in this test report refer only to the sample(s) tested. This test report cannot be reproduced, except in full, without prior written permission of the Company. 除非另有說明，此報告結果僅對測試之樣品負責。本報告未經本公司書面許可，不可部份複製。

This Test Report is issued by the Company under its General Conditions of Service which is available on request or accessible at [http://www.sgs.com/terms\\_and\\_conditions.htm](http://www.sgs.com/terms_and_conditions.htm). Attention is drawn to the limitation of liability, indemnification and jurisdiction issues defined therein. Any holder of this Test Report is advised that information contained hereon reflects the Company's findings at the time of its intervention only and within the limits of Client's instructions, if any. The Company's sole responsibility is to its Client and this document does not exonerate parties to a transaction from exercising all their rights and obligations under the transaction documents. Any unauthorized alteration, forgery or falsification of the content or appearance of this document is unlawful and offenders may be prosecuted to the fullest extent of the law. °

## Table of Contents

<b>1.</b>	<b>GENERAL INFORMATION .....</b>	<b>5</b>
1.2	RELATED SUBMITTAL(S) / GRANT (S) .....	6
1.3	TEST METHODOLOGY .....	6
1.4	TEST FACILITY .....	6
1.5	SPECIAL ACCESSORIES .....	6
1.6	EQUIPMENT MODIFICATIONS .....	6
<b>2.</b>	<b>SYSTEM TEST CONFIGURATION .....</b>	<b>7</b>
2.1	EUT CONFIGURATION .....	7
2.2	EUT EXERCISE .....	7
2.3	TEST PROCEDURE .....	7
2.4	LIMITATION .....	8
2.5	CONFIGURATION OF TESTED SYSTEM .....	9
<b>3.</b>	<b>SUMMARY OF TEST RESULTS .....</b>	<b>10</b>
<b>4.</b>	<b>DESCRIPTION OF TEST MODES .....</b>	<b>10</b>
	<b>CONDUCTED EMISSIONS TEST .....</b>	<b>11</b>
5.1	MEASUREMENT PROCEDURE: .....	11
5.2	TEST SET-UP (BLOCK DIAGRAM OF CONFIGURATION) .....	11
5.3	MEASUREMENT EQUIPMENT USED: .....	12
5.4	MEASUREMENT RESULT .....	12
<b>5.</b>	<b>RADIATED EMISSION TEST .....</b>	<b>17</b>
6.1	MEASUREMENT PROCEDURE .....	17
6.2	TEST SET-UP (BLOCK DIAGRAM OF CONFIGURATION) .....	17
6.3	MEASUREMENT EQUIPMENT USED: .....	18
6.4	FIELD STRENGTH CALCULATION .....	18
6.5	MEASUREMENT RESULT .....	19
	<b>PHOTOGRAPHS OF SETUP .....</b>	<b>23</b>
	<b>PHOTOGRAPHS OF EUT .....</b>	<b>26</b>

Unless otherwise stated the results shown in this test report refer only to the sample(s) tested. This test report cannot be reproduced, except in full, without prior written permission of the Company. 除非另有說明，此報告結果僅對測試之樣品負責。本報告未經本公司書面許可，不可部份複製。  
This Test Report is issued by the Company under its General Conditions of Service which is available on request or accessible at [http://www.sgs.com/terms\\_and\\_conditions.htm](http://www.sgs.com/terms_and_conditions.htm). Attention is drawn to the limitation of liability, indemnification and jurisdiction issues defined therein. Any holder of this Test Report is advised that information contained hereon reflects the Company's findings at the time of its intervention only and within the limits of Client's instructions, if any. The Company's sole responsibility is to its Client and this document does not exonerate parties to a transaction from exercising all their rights and obligations under the transaction documents. Any unauthorized alteration, forgery or falsification of the content or appearance of this document is unlawful and offenders may be prosecuted to the fullest extent of the law. °

## 1. GENERAL INFORMATION

General:

Product Name:	GSM MOBILE PHONE	
Brand Name:	COSUN	
Model Name:	COSUN2100	
Model Difference:	N/A	
Data Cable (USB):	N/A	
Power Supply	3.7 Vdc re-chargeable battery or 5Vdc by AC/DC power adapter	
	Battery:	Model: COSUN2100; Supplier: COSUN
	Adapter:	Model:TA07-0500700

GSM:

Cellular Phone Standards Frequency Range and Power	GSM 850	824 MHz– 849MHz	33 dBm
	GSM 900	880 MHz– 915MHz	33 dBm
Type of Emission	GSM: 300KGXW		
Hardware Version	V2.0		
Software Version	X700_011_CE		
IMEI	358157020000001		

This test report applies for EGSM850/1900 function.

Unless otherwise stated the results shown in this test report refer only to the sample(s) tested. This test report cannot be reproduced, except in full, without prior written permission of the Company. 除非另有說明，此報告結果僅對測試之樣品負責。本報告未經本公司書面許可，不可部份複製。  
This Test Report is issued by the Company under its General Conditions of Service which is available on request or accessible at [http://www.sgs.com/terms\\_and\\_conditions.htm](http://www.sgs.com/terms_and_conditions.htm).  
Attention is drawn to the limitation of liability, indemnification and jurisdiction issues defined therein. Any holder of this Test Report is advised that information contained hereon reflects the Company's findings at the time of its intervention only and within the limits of Client's instructions, if any. The Company's sole responsibility is to its Client and this document does not exonerate parties to a transaction from exercising all their rights and obligations under the transaction documents. Any unauthorized alteration, forgery or falsification of the content or appearance of this document is unlawful and offenders may be prosecuted to the fullest extent of the law. °

## 1.2 Related Submittal(s) / Grant (s)

This submittal(s) (test report) is intended for FCC Part15 Subpart B is authorized under a Verification procedure.

## 1.3 Test Methodology

Both conducted and radiated testing were performed according to the procedures in ANSI C63.4 (2003). Radiated testing was performed at an antenna to EUT distance 3 meters.

## 1.4 Test Facility

The measurement facilities used to collect the 3m Radiated Emission and AC power line conducted data are located on the address of SGS Taiwan Ltd. Electronics & Communication Laboratory No. 134, Wu Kung Rd., Wuku Industrial Zone, Taipei Country, Taiwan which are constructed and calibrated to meet the FCC requirements in documents ANSI C63.4: 2003. FCC Registration Number are: 990257 and 236194, Canada Registration Number: 4620A-1

The 10 m Open Area Test Sites located on the address of SGS Taiwan Ltd. Electronics & Communication Laboratory No. 29, Pau-Tou-Tsuo Valley Chia-Pau Tsuen, Linkou Hsiang, Taipei county, which is constructed and calibrated to meet the CISPR 22/EN 55022 requirements. SGS Site No. 1(3 &10 meters) and FCC Registration Number: 94644.

## 1.5 Special Accessories

Not available for this EUT intended for grant.

## 1.6 Equipment Modifications

Not available for this EUT intended for grant.

## 2. System Test Configuration

### 2.1 EUT Configuration

The EUT configuration for testing is installed on RF field strength measurement to meet the Commissions requirement and operating in a manner which intends to maximize its emission characteristics in a continuous normal application.

### 2.2 EUT Exercise

The EUT was operated in the normal operating mode.

### 2.3 Test Procedure

#### 2.3.1 Conducted Emissions

The EUT is placed on a turn table which is 0.8 m above ground plane. According to the requirements in Section 7 and 13 of ANSI C63.4-2003. Conducted emissions from the EUT measured in the frequency range between 0.15 MHz and 30MHz using CISPR Quasi-Peak and average detector mode.

#### 2.3.2 Radiated Emissions

The EUT is placed on a turn table which is 0.8 m above ground plane. The turn table shall rotate 360 degrees to determine the position of maximum emission level. EUT is set 3m away from the receiving antenna which varied from 1m to 4m to find out the highest emission. And also, each emission was to be maximized by changing the polarization of receiving antenna both horizontal and vertical. In order to find out the max. emission, the relative positions of this hand-held transmitter (EUT) was rotated through three orthogonal axes and measurement procedures for electric field radiated emissions above 1 GHz the EUT measurement is to be made "while keeping the antenna in the 'cone of radiation' from that area and pointed at the area both in azimuth and elevation, with polarization oriented for maximum response." is still within the 3dB illumination BW of the measurement antenna. according to the requirements in Section 8 and 13 and Subclause 8.3.1.2 of ANSI C63.4-2003.

## 2.4 Limitation

### (1) Conducted Emission

According to section 15.107(a) Conducted Emission Limits is as following.

Frequency range MHz	Class B Limits dB (uV)	
	Quasi-peak	Average
0.15 to 0.50	66 to 56	56 to 46
0.50 to 5	56	46
5 to 30	60	50
Note		
1.The lower limit shall apply at the transition frequencies		
2.The limit decreases linearly with the logarithm of the frequency in the range 0.15 MHz to 0.50 MHz.		

### (2) Radiated Emission

According to section 15.109(a) Radiated Emission Class B Limits is as following:

Frequency (MHz)	Field strength $\mu\text{V/m}$	Distance (m)	Field strength at 3m $\text{dB}\mu\text{V/m}$
30-88	100	3	40
88-216	150	3	43.5
216-960	200	3	46
Above 960	500	3	54

Remark: 1. Emission level in  $\text{dB}\mu\text{V/m}=20 \log (\mu\text{V/m})$   
2. Measurement was performed at an antenna to the closed point of EUT distance of 3 meters.



## 2.5 Configuration of Tested System

Fig. 2-1 Configuration of Tested System (Data Link Mode)

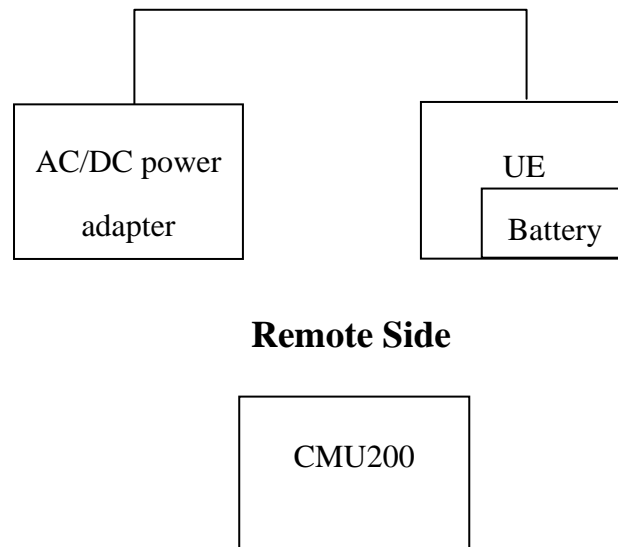


Table 1-1 Support Equipment Used in Tested System

Item	Equipment	Mfr/Brand	Model/Type No.	Series No.	Data Cable	Power Cord
1.	UE	COSUN	COSUN2100	N/A	N/A	N/A
2.	AC Adaptor	COSUN	TA07-0500700	N/A	N/A	180cm, Un-shielded
3.	Battery	COSUN	COSUN2100	N/A	N/A	N/A

**Note:** All the above equipment/cables were placed in worse case positions to maximize emission signals during emission test.

**Grounding:** Grounding was in accordance with the manufacturer's requirements and conditions for the intended use.

Unless otherwise stated the results shown in this test report refer only to the sample(s) tested. This test report cannot be reproduced, except in full, without prior written permission of the Company. 除非另有說明，此報告結果僅對測試之樣品負責。本報告未經本公司書面許可，不可部份複製。  
This Test Report is issued by the Company under its General Conditions of Service which is available on request or accessible at [http://www.sgs.com/terms\\_and\\_conditions.htm](http://www.sgs.com/terms_and_conditions.htm). Attention is drawn to the limitation of liability, indemnification and jurisdiction issues defined therein. Any holder of this Test Report is advised that information contained hereon reflects the Company's findings at the time of its intervention only and within the limits of Client's instructions, if any. The Company's sole responsibility is to its Client and this document does not exonerate parties to a transaction from exercising all their rights and obligations under the transaction documents. Any unauthorized alteration, forgery or falsification of the content or appearance of this document is unlawful and offenders may be prosecuted to the fullest extent of the law. °

### 3. Summary of Test Results

FCC Rules	Description Of Test	Result
§15.107	Conducted Emission Class B	Compliant
§15.109	Radiated Emission Class B	Compliant

### 4. Description of test modes

The EUT is stay in normal GSM link modes.

Unless otherwise stated the results shown in this test report refer only to the sample(s) tested. This test report cannot be reproduced, except in full, without prior written permission of the Company. 除非另有說明，此報告結果僅對測試之樣品負責。本報告未經本公司書面許可，不可部份複製。  
This Test Report is issued by the Company under its General Conditions of Service which is available on request or accessible at [http://www.sgs.com/terms\\_and\\_conditions.htm](http://www.sgs.com/terms_and_conditions.htm).  
Attention is drawn to the limitation of liability, indemnification and jurisdiction issues defined therein. Any holder of this Test Report is advised that information contained hereon reflects the Company's findings at the time of its intervention only and within the limits of Client's instructions, if any. The Company's sole responsibility is to its Client and this document does not exonerate parties to a transaction from exercising all their rights and obligations under the transaction documents. Any unauthorized alteration, forgery or falsification of the content or appearance of this document is unlawful and offenders may be prosecuted to the fullest extent of the law. °

## Conducted Emissions Test

### 5.1 Measurement Procedure:

- 1.** The EUT was placed on a table which is 0.8m above ground plane.
- 2.** Maximum procedure was performed on the six highest emissions to ensure EUT compliance.
- 3.** Repeat above procedures until all frequency measured were complete.

## 5.2 Test SET-UP (Block Diagram of Configuration)

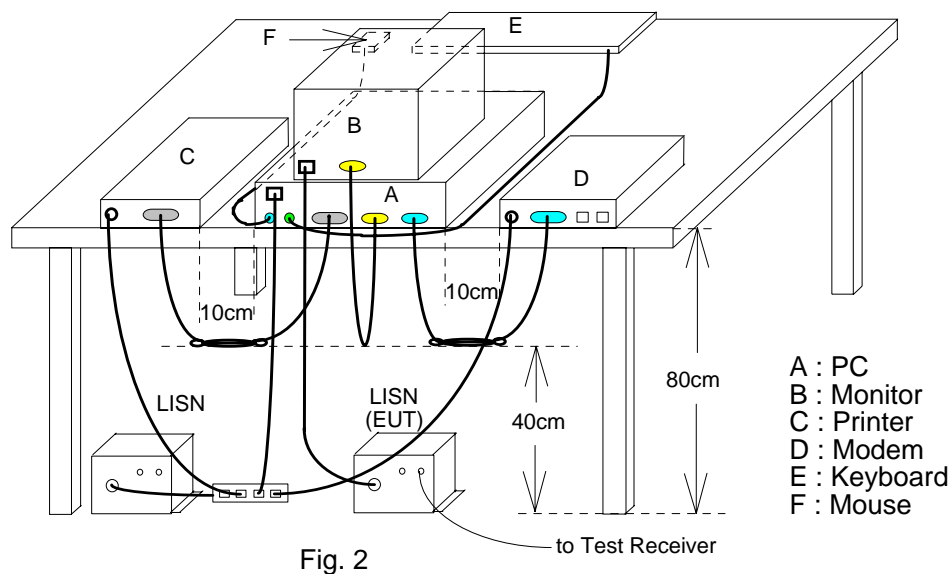


Fig. 2

### 5.3 Measurement Equipment Used:

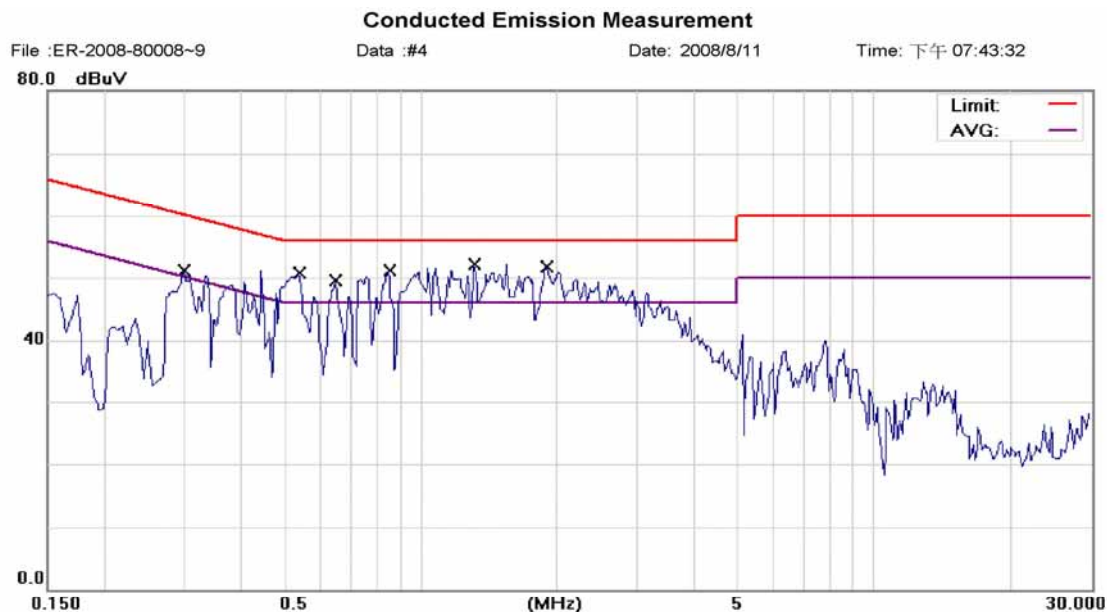
Conducted Emission Test Site					
EQUIPMENT TYPE	MFR	MODEL NUMBER	SERIAL NUMBER	LAST CAL.	CAL DUE.
EMC Analyzer	HP	8594EM	3624A00203	09/02/2007	09/03/2008
EMI Test Receiver	R&S	ESCS30	828985/004	06/09/2008	06/10/2009
Transient Limiter	HP	11947A	3107A02062	09/02/2007	09/03/2008
LISN	Rolf-Heine	NNB-2/16Z	99012	12/31/2007	12/30/2008
LISN	FCC	FCC-LISN-50/250-25-2-01	04034	02/18/2008	02/17/2009
Coaxial Cables	N/A	No. 3, 4	N/A	12/01/2007	11/30/2008

### 5.4 Measurement Result

The initial step in collecting conducted data is a spectrum analyzer peak scan of the measurement range. Significant peaks are then marked as shown on the following data page, and these signals are then quasi-peaked.

## AC POWER LINE CONDUCTED EMISSION TEST DATA

Operation Mode:	GSM850 Link Mode			Test Date:	Aug. 11, 2008
Temperature:	25 °C	Humidity:	62 %	Test By:	Jason



Site	SGS CONDUCTED #1	Phase:	L1	Temperature:	25 °C
Limit:	CISPR22 Class B Conduction(QP)	Power:	AC 120V/60Hz	Humidity:	62 %
EUT:	GSM MOBILE PHONE	Distance:		Air Pressure:	hpa
M/N:	COSUN2100				
Note:	GSM 850 Link Mode				

No.	Mk.	Freq.	Reading Level	Factor	Measure-ment	Limit	Over		
		MHz	dBuV	dB	dBuV	dBuV	dB	Detector	Comment
1		0.3000	46.20	0.13	46.33	60.24	-13.91	QP	
2		0.3000	32.80	0.13	32.93	50.24	-17.31	AVG	
3	*	0.5400	48.20	0.06	48.26	56.00	-7.74	QP	
4		0.5400	31.30	0.06	31.36	46.00	-14.64	AVG	
5		0.6500	44.10	0.05	44.15	56.00	-11.85	QP	
6		0.6500	30.20	0.05	30.25	46.00	-15.75	AVG	
7		0.8500	47.80	0.05	47.85	56.00	-8.15	QP	
8		0.8500	31.70	0.05	31.75	46.00	-14.25	AVG	
9		1.3100	47.70	0.04	47.74	56.00	-8.26	QP	
10		1.3100	30.20	0.04	30.24	46.00	-15.76	AVG	
11		1.8900	43.30	0.04	43.34	56.00	-12.66	QP	
12		1.8900	29.80	0.04	29.84	46.00	-16.16	AVG	

Unless otherwise stated the results shown in this test report refer only to the sample(s) tested. This test report cannot be reproduced, except in full, without prior written permission of the Company. 除非另有說明，此報告結果僅對測試之樣品負責。本報告未經本公司書面許可，不可部份複製。

This Test Report is issued by the Company under its General Conditions of Service which is available on request or accessible at [http://www.sgs.com/terms\\_and\\_conditions.htm](http://www.sgs.com/terms_and_conditions.htm). Attention is drawn to the limitation of liability, indemnification and jurisdiction issues defined therein. Any holder of this Test Report is advised that information contained hereon reflects the Company's findings at the time of its intervention only and within the limits of Client's instructions, if any. The Company's sole responsibility is to its Client and this document does not exonerate parties to a transaction from exercising all their rights and obligations under the transaction documents. Any unauthorized alteration, forgery or falsification of the content or appearance of this document is unlawful and offenders may be prosecuted to the fullest extent of the law.

## Conducted Emission Measurement

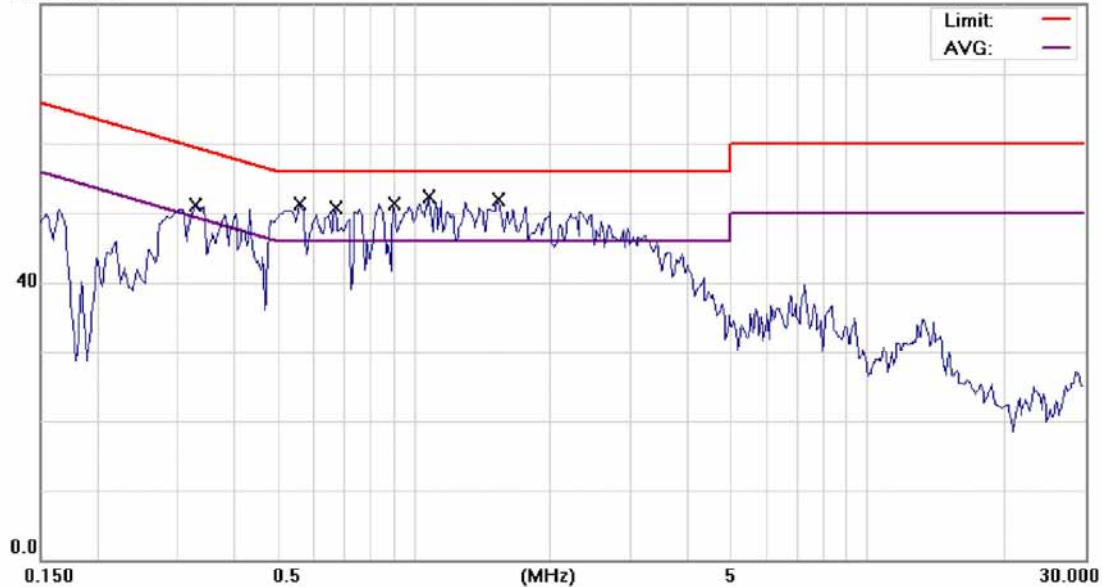
File :ER-2008-80008~9

Data :#3

Date: 2008/8/11

Time: 下午 07:33:02

80.0 dBuV



Site SGS CONDUCTED #1

Phase: **N**

Temperature: 25 °C

Limit: CISPR22 Class B Conduction(QP)

Power: AC 120V/60Hz

Humidity: 62 %

EUT: GSM MOBILE PHONE

Distance:

Air Pressure: hpa

M/N: COSUN2100

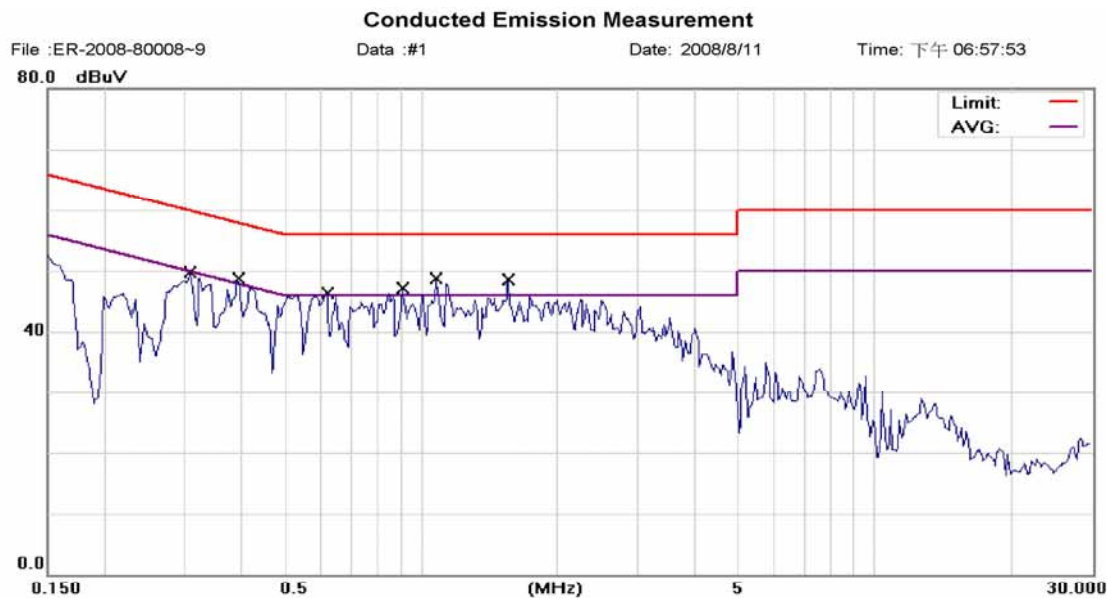
Note: GSM 850 Link Mode

No.	Mk.	Freq.	Reading Level	Factor	Measurement	Limit	Over		
		MHz	dBuV	dB	dBuV	dBuV	dB	Detector	Comment
1		0.3300	48.30	0.10	48.40	59.45	-11.05	QP	
2		0.3300	34.80	0.10	34.90	49.45	-14.55	AVG	
3		0.5600	48.30	0.05	48.35	56.00	-7.65	QP	
4		0.5600	31.40	0.05	31.45	46.00	-14.55	AVG	
5		0.6700	45.60	0.04	45.64	56.00	-10.36	QP	
6		0.6700	31.50	0.04	31.54	46.00	-14.46	AVG	
7		0.9000	43.50	0.03	43.53	56.00	-12.47	QP	
8		0.9000	32.40	0.03	32.43	46.00	-13.57	AVG	
9	*	1.0800	48.90	0.03	48.93	56.00	-7.07	QP	
10		1.0800	34.80	0.03	34.83	46.00	-11.17	AVG	
11		1.5300	46.90	0.03	46.93	56.00	-9.07	QP	
12		1.5300	31.80	0.03	31.83	46.00	-14.17	AVG	

Unless otherwise stated the results shown in this test report refer only to the sample(s) tested. This test report cannot be reproduced, except in full, without prior written permission of the Company. 除非另有說明，此報告結果僅對測試之樣品負責。本報告未經本公司書面許可，不可部份複製。  
This Test Report is issued by the Company under its General Conditions of Service which is available on request or accessible at [http://www.sgs.com/terms\\_and\\_conditions.htm](http://www.sgs.com/terms_and_conditions.htm). Attention is drawn to the limitation of liability, indemnification and jurisdiction issues defined therein. Any holder of this Test Report is advised that information contained hereon reflects the Company's findings at the time of its intervention only and within the limits of Client's instructions, if any. The Company's sole responsibility is to its Client and this document does not exonerate parties to a transaction from exercising all their rights and obligations under the transaction documents. Any unauthorized alteration, forgery or falsification of the content or appearance of this document is unlawful and offenders may be prosecuted to the fullest extent of the law.

## AC POWER LINE CONDUCTED EMISSION TEST DATA

Operation Mode:	GSM1900 Link Mode			Test Date:	Aug. 11, 2008
Temperature:	25 °C	Humidity:	62 %	Test By:	Jason



Site: SGS CONDUCTED #1  
Limit: CISPR22 Class B Conduction(QP)  
EUT: GSM MOBILE PHONE  
M/N: COSUN2100  
Note: GSM 1900 Link Mode

Phase: **L1**  
Power: AC 120V/60Hz  
Distance:

Temperature: 25 °C  
Humidity: 62 %  
Air Pressure: hpa

No.	Mk.	Freq. MHz	Reading Level dBuV	Factor dB	Measure- ment dBuV	Limit dBuV	Over dB	Detector	Comment
1		0.3100	45.70	0.12	45.82	59.97	-14.15	QP	
2		0.3100	34.50	0.12	34.62	49.97	-15.35	AVG	
3		0.3950	43.90	0.09	43.99	57.96	-13.97	QP	
4		0.3950	32.80	0.09	32.89	47.96	-15.07	AVG	
5		0.6200	44.10	0.06	44.16	56.00	-11.84	QP	
6		0.6200	30.50	0.06	30.56	46.00	-15.44	AVG	
7		0.9100	42.10	0.04	42.14	56.00	-13.86	QP	
8		0.9100	30.90	0.04	30.94	46.00	-15.06	AVG	
9	*	1.0800	44.60	0.04	44.64	56.00	-11.36	QP	
10		1.0800	31.50	0.04	31.54	46.00	-14.46	AVG	
11		1.5600	43.60	0.04	43.64	56.00	-12.36	QP	
12		1.5600	31.40	0.04	31.44	46.00	-14.56	AVG	

Unless otherwise stated the results shown in this test report refer only to the sample(s) tested. This test report cannot be reproduced, except in full, without prior written permission of the Company. 除非另有說明，此報告結果僅對測試之樣品負責。本報告未經本公司書面許可，不可部份複製。

This Test Report is issued by the Company under its General Conditions of Service which is available on request or accessible at [http://www.sgs.com/terms\\_and\\_conditions.htm](http://www.sgs.com/terms_and_conditions.htm). Attention is drawn to the limitation of liability, indemnification and jurisdiction issues defined therein. Any holder of this Test Report is advised that information contained hereon reflects the Company's findings at the time of its intervention only and within the limits of Client's instructions, if any. The Company's sole responsibility is to its Client and this document does not exonerate parties to a transaction from exercising all their rights and obligations under the transaction documents. Any unauthorized alteration, forgery or falsification of the content or appearance of this document is unlawful and offenders may be prosecuted to the fullest extent of the law.



## Conducted Emission Measurement

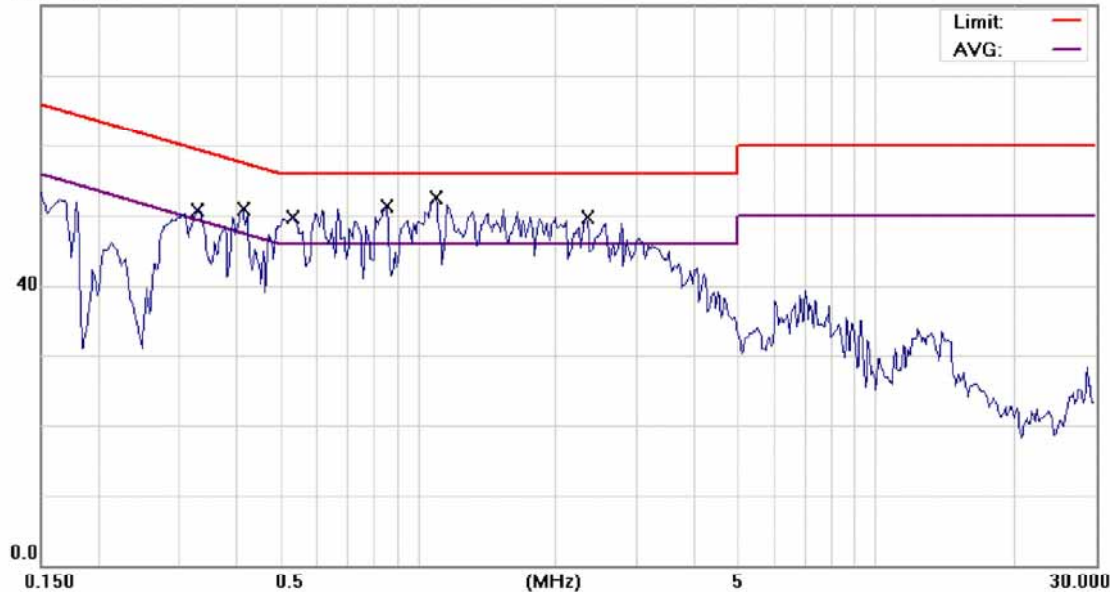
File :ER-2008-80008-9

Data :#2

Date: 2008/8/11

Time: 下午 07:27:11

80.0 dBuV



Site SGS CONDUCTED #1  
Limit: CISPR22 Class B Conduction(QP)  
EUT: GSM MOBILE PHONE  
M/N: COSUN2100  
Note: GSM 1900 Link Mode

Phase: **N**  
Power: AC 120V/60Hz  
Distance:

Temperature: 25 °C  
Humidity: 62 %  
Air Pressure: hpa

No.	Mk.	Freq.	Reading Level	Factor	Measure-ment	Limit	Over		
		MHz	dBuV	dB	dBuV	dBuV	dB	Detector	Comment
1		0.3300	48.20	0.10	48.30	59.45	-11.15	QP	
2		0.3300	35.20	0.10	35.30	49.45	-14.15	AVG	
3		0.4150	44.60	0.08	44.68	57.55	-12.87	QP	
4		0.4150	30.90	0.08	30.98	47.55	-16.57	AVG	
5		0.5300	47.90	0.05	47.95	56.00	-8.05	QP	
6		0.5300	31.10	0.05	31.15	46.00	-14.85	AVG	
7		0.8500	48.50	0.04	48.54	56.00	-7.46	QP	
8		0.8500	31.50	0.04	31.54	46.00	-14.46	AVG	
9	*	1.0900	49.70	0.03	49.73	56.00	-6.27	QP	
10		1.0900	31.90	0.03	31.93	46.00	-14.07	AVG	
11		2.3400	43.80	0.03	43.83	56.00	-12.17	QP	
12		2.3400	32.80	0.03	32.83	46.00	-13.17	AVG	

Unless otherwise stated the results shown in this test report refer only to the sample(s) tested. This test report cannot be reproduced, except in full, without prior written permission of the Company. 除非另有說明，此報告結果僅對測試之樣品負責。本報告未經本公司書面許可，不可部份複製。  
This Test Report is issued by the Company under its General Conditions of Service which is available on request or accessible at [http://www.sgs.com/terms\\_and\\_conditions.htm](http://www.sgs.com/terms_and_conditions.htm).  
Attention is drawn to the limitation of liability, indemnification and jurisdiction issues defined therein. Any holder of this Test Report is advised that information contained hereon reflects the Company's findings at the time of its intervention only and within the limits of Client's instructions, if any. The Company's sole responsibility is to its Client and this document does not exonerate parties to a transaction from exercising all their rights and obligations under the transaction documents. Any unauthorized alteration, forgery or falsification of the content or appearance of this document is unlawful and offenders may be prosecuted to the fullest extent of the law.



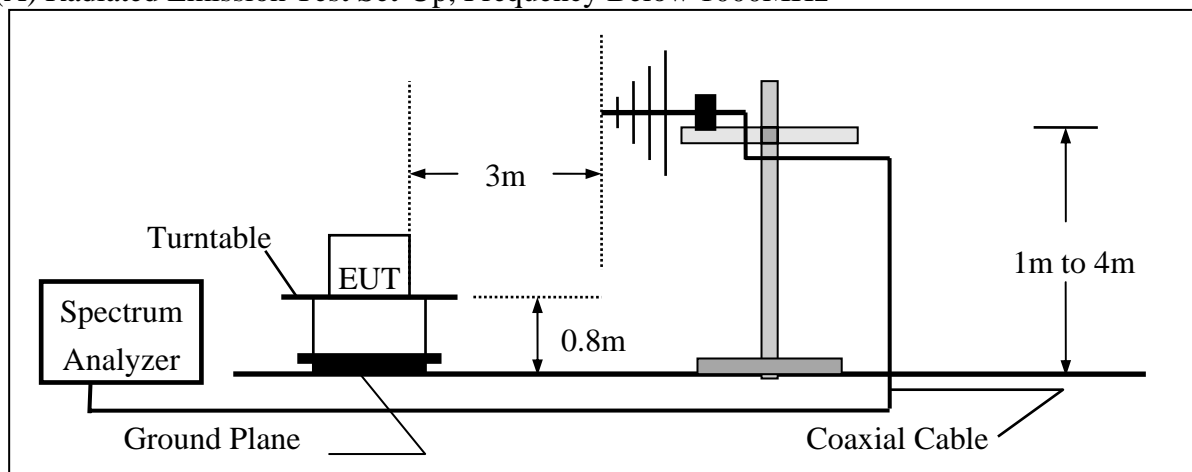
## 5. Radiated Emission Test

### 6.1 Measurement Procedure

1. The EUT was placed on a turn table which is 0.8m above ground plane.
2. Maximum procedure was performed on the six highest emissions to ensure EUT compliance.
3. And also, each emission was to be maximized by changing the polarization of receiving antenna both horizontal and vertical.
4. Repeat above procedures until all frequency measured were complete.

### 6.2 Test SET-UP (Block Diagram of Configuration)

(A) Radiated Emission Test Set-Up, Frequency Below 1000MHz



Unless otherwise stated the results shown in this test report refer only to the sample(s) tested. This test report cannot be reproduced, except in full, without prior written permission of the Company. 除非另有說明，此報告結果僅對測試之樣品負責。本報告未經本公司書面許可，不可部份複製。  
This Test Report is issued by the Company under its General Conditions of Service which is available on request or accessible at [http://www.sgs.com/terms\\_and\\_conditions.htm](http://www.sgs.com/terms_and_conditions.htm). Attention is drawn to the limitation of liability, indemnification and jurisdiction issues defined therein. Any holder of this Test Report is advised that information contained hereon reflects the Company's findings at the time of its intervention only and within the limits of Client's instructions, if any. The Company's sole responsibility is to its Client and this document does not exonerate parties to a transaction from exercising all their rights and obligations under the transaction documents. Any unauthorized alteration, forgery or falsification of the content or appearance of this document is unlawful and offenders may be prosecuted to the fullest extent of the law.

### 6.3 Measurement Equipment Used:

966 Chamber					
EQUIPMENT TYPE	MFR	MODEL NUMBER	SERIAL NUMBER	LAST CAL.	CAL DUE.
Spectrum Analyzer	R&S	FSP 40	100034	02/22/2008	02/21/2009
Spectrum Analyzer	Agilent	E7405A	US41160416	07/04/2007	07/03/2009
Spectrum Analyzer	Agilent	E4446A	MY43360126	04/19/2008	04/18/2010
Bilog Antenna	SCHWAZBECK	VULB9160	9160-3158	11/29/2007	11/28/2008
Horn antenna	Schwarzbeck	BBHA 9120D	309/320	03/14/2008	03/13/2009
Horn antenna	Schwarzbeck	BBHA 9170	184/185	12/31/2007	12/30/2008
Pre-Amplifier	HP	8447F	3113A06892	01/04/2008	01/03/2009
Pre-Amplifier	HP	8494B	3008A00578	01/04/2008	01/03/2009
Turn Table	HD	DT420	N/A	N.C.R	N.C.R
Antenna Tower	HD	MA240-N	240/657	N.C.R	N.C.R
Controller	HD	HD100	N/A	N.C.R	N.C.R
Low Loss Cable	HUBER+SUHNER	SUCOFLEX 104PEA-10M	10m	02/13/2008	02/12/2009
Low Loss Cable	HUBER+SUHNER	SUCOFLEX 104PEA-3M	3m	02/13/2008	02/12/2009
Site NSA	SGS	966 chamber	N/A	11/17/2007	11/16/2008

### 6.4 Field Strength Calculation

The field strength is calculated by adding the Antenna Factor and Cable Factor and subtracting the Amplifier Gain and Duty Cycle Correction Factor (if any) from the measured reading. The basic equation with a sample calculation is as follows:

$$FS = RA + AF + CL - AG$$

Where	FS = Field Strength	CL = Cable Attenuation Factor (Cable Loss)
	RA = Reading Amplitude	AG = Amplifier Gain
	AF = Antenna Factor	

Unless otherwise stated the results shown in this test report refer only to the sample(s) tested. This test report cannot be reproduced, except in full, without prior written permission of the Company. 除非另有說明，此報告結果僅對測試之樣品負責。本報告未經本公司書面許可，不可部份複製。  
This Test Report is issued by the Company under its General Conditions of Service which is available on request or accessible at [http://www.sgs.com/terms\\_and\\_conditions.htm](http://www.sgs.com/terms_and_conditions.htm).  
Attention is drawn to the limitation of liability, indemnification and jurisdiction issues defined therein. Any holder of this Test Report is advised that information contained hereon reflects the Company's findings at the time of its intervention only and within the limits of Client's instructions, if any. The Company's sole responsibility is to its Client and this document does not exonerate parties to a transaction from exercising all their rights and obligations under the transaction documents. Any unauthorized alteration, forgery or falsification of the content or appearance of this document is unlawful and offenders may be prosecuted to the fullest extent of the law. °

## 6.5 Measurement Result

Test Mode: GSM850 Link Mode

Test Date : Aug. 24, 2008

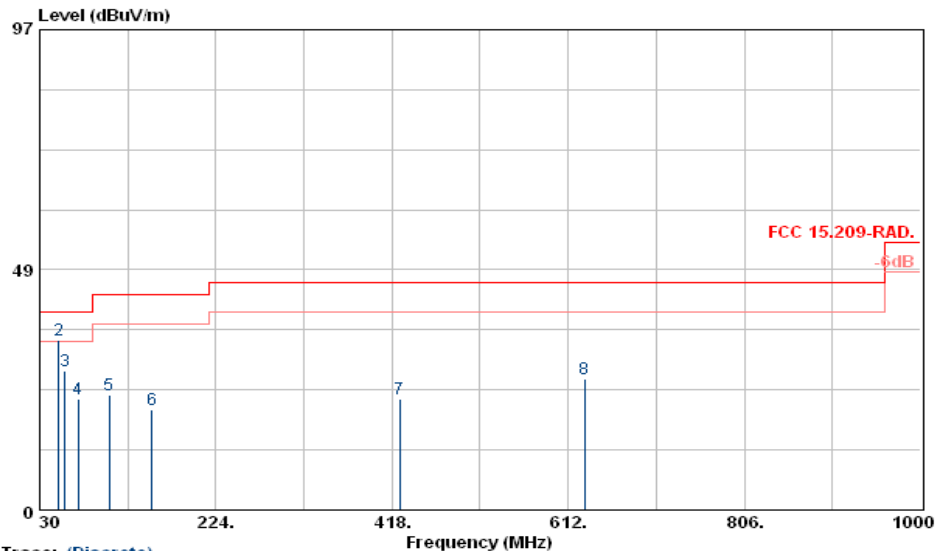
Detector Function: Quasi-Peak/PK

Test By: Jason

Frequency Range: 30MHz-1000MHz

Temperature : 25

Humidity : 65 %



Site : RF SITE  
Condition : FCC 15.209-RAD. 3m VULB9160 VERTICAL 151cm 0deg  
Project No. : ER/2008/80008  
Applicant : SGS CSTC  
EUT Description : GSM Mobile Phone  
EUT Model : COSUN2100  
Test Mode : GSM850 Link //Mid Ch//H Plan  
Temp./Humid. : 25/65  
Operator : Jason

	Freq	ReadAntenna	Preamp	Cable		Limit	Over	
	MHz	Level	Factor	Loss	Factor	Line	Limit	Remark
		dBuV	dB/m					
1	30.00	51.54	12.24	27.75	0.54	-14.97	36.57	40.00 -3.43 Peak
2	51.34	48.58	12.54	27.57	0.84	-14.19	34.39	40.00 -5.61 Peak
3	58.13	42.71	12.56	28.06	0.84	-14.66	28.05	40.00 -11.95 Peak
4	72.68	39.14	10.32	27.90	0.96	-16.62	22.52	40.00 -17.48 Peak
5	106.63	39.58	10.74	28.34	1.12	-16.48	23.10	43.50 -20.40 Peak
6	153.19	33.13	13.69	28.11	1.42	-13.00	20.13	43.50 -23.37 Peak
7	426.73	31.51	15.91	27.43	2.31	-9.21	22.30	46.00 -23.70 Peak
8	630.43	31.96	19.46	27.64	2.81	-5.37	26.59	46.00 -19.41 Peak

### Remark :

- (1) Measuring frequencies from 30 MHz to the 1GHz.
- (2) Radiated emissions measured in frequency range from 30 MHz to 1000MHz were made with an instrument using Peak detector mode.
- (3) Data of measurement within this frequency range shown “ - ” in the table above means the reading of emissions are attenuated more than 20dB below the permissible limits or the field strength is too small to be measured.
- (4) The IF bandwidth of SPA 30MHz to 1GHz was 100KHz.

Unless otherwise stated the results shown in this test report refer only to the sample(s) tested. This test report cannot be reproduced, except in full, without prior written permission of the Company. 除非另有說明，此報告結果僅對測試之樣品負責。本報告未經本公司書面許可，不可部份複製。  
This Test Report is issued by the Company under its General Conditions of Service which is available on request or accessible at [http://www.sgs.com/terms\\_and\\_conditions.htm](http://www.sgs.com/terms_and_conditions.htm).  
Attention is drawn to the limitation of liability, indemnification and jurisdiction issues defined therein. Any holder of this Test Report is advised that information contained hereon reflects the Company's findings at the time of its intervention only and within the limits of Client's instructions, if any. The Company's sole responsibility is to its Client and this document does not exonerate parties to a transaction from exercising all their rights and obligations under the transaction documents. Any unauthorized alteration, forgery or falsification of the content or appearance of this document is unlawful and offenders may be prosecuted to the fullest extent of the law.

Test Mode: GSM 850 Link Mode

Test Date : Aug. 24, 2008

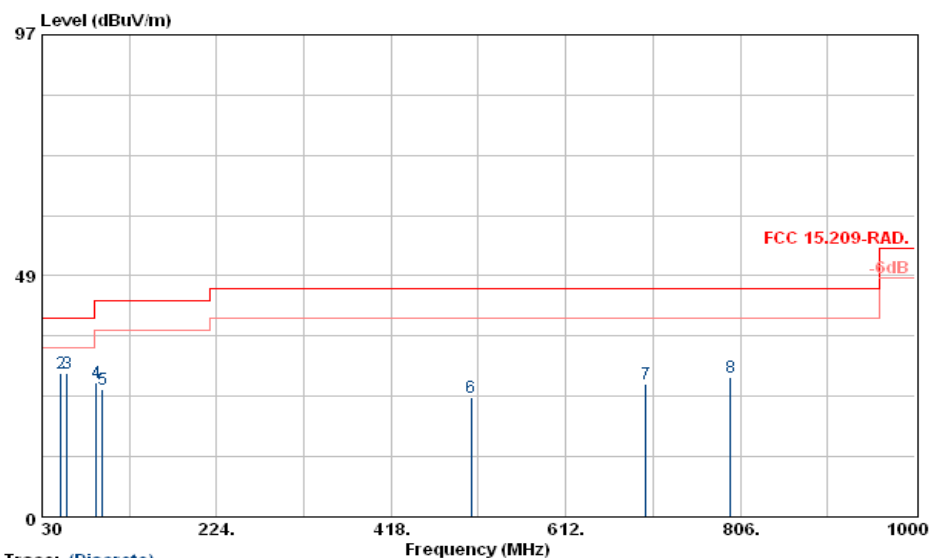
Detector Function: Quasi-Peak/PK

Test By: Jason

Frequency Range: 30MHz-1000MHz

Temperature : 25

Humidity : 65 %



Site : RF SITE  
Condition : FCC 15.209-RAD. 3m VULB9160 HORIZONTAL 151cm 0deg  
Project No. : ER/2008/80008  
Applicant : SGS CSTC  
EUT Description : GSM Mobile Phone  
EUT Model : COSUN2100  
Test Mode : GSM850 Link //Mid Ch//H Plan  
Temp./Humid. : 25/65  
Operator : Jason

	Freq	ReadAntenna	Preamp	Cable		Level	Limit	Over	
	MHz	Level	Factor	Factor	Loss	dBuV/m	Line	Limit	Remar
		dBuV	dB/m	dB	dB		dBuV/m	dB	
1	30.00	43.35	12.24	27.75	0.54	-14.97	28.38	40.00	-11.62 Peak
2	51.34	43.00	12.54	27.57	0.84	-14.19	28.81	40.00	-11.19 Peak
3	58.13	43.54	12.56	28.06	0.84	-14.66	28.88	40.00	-11.12 Peak
4	90.14	44.51	9.30	27.88	0.96	-17.62	26.89	43.50	-16.61 Peak
5	96.93	42.74	9.94	28.22	1.12	-17.16	25.58	43.50	-17.92 Peak
6	507.24	32.33	17.22	28.16	2.54	-8.40	23.93	46.00	-22.07 Peak
7	701.24	31.84	20.17	28.15	3.01	-4.97	26.87	46.00	-19.13 Peak
8	795.33	31.38	21.68	28.04	3.21	-3.15	28.23	46.00	-17.77 Peak

## Remark :

- (1) Measuring frequencies from 30 MHz to the 1GHz.
- (2) Radiated emissions measured in frequency range from 30 MHz to 1000MHz were made with an instrument using Peak detector mode.
- (3) Data of measurement within this frequency range shown " - " in the table above means the reading of emissions are attenuated more than 20dB below the permissible limits or the field strength is too small to be measured.
- (4) The IF bandwidth of SPA 30MHz to 1GHz was 100KHz.

Unless otherwise stated the results shown in this test report refer only to the sample(s) tested. This test report cannot be reproduced, except in full, without prior written permission of the Company. 除非另有說明，此報告結果僅對測試之樣品負責。本報告未經本公司書面許可，不可部份複製。  
This Test Report is issued by the Company under its General Conditions of Service which is available on request or accessible at [http://www.sgs.com/terms\\_and\\_conditions.htm](http://www.sgs.com/terms_and_conditions.htm).  
Attention is drawn to the limitation of liability, indemnification and jurisdiction issues defined therein. Any holder of this Test Report is advised that information contained hereon reflects the Company's findings at the time of its intervention only and within the limits of Client's instructions, if any. The Company's sole responsibility is to its Client and this document does not exonerate parties to a transaction from exercising all their rights and obligations under the transaction documents. Any unauthorized alteration, forgery or falsification of the content or appearance of this document is unlawful and offenders may be prosecuted to the fullest extent of the law.

Test Mode: GSM1900 Link Mode

Test Date : Aug. 24, 2008

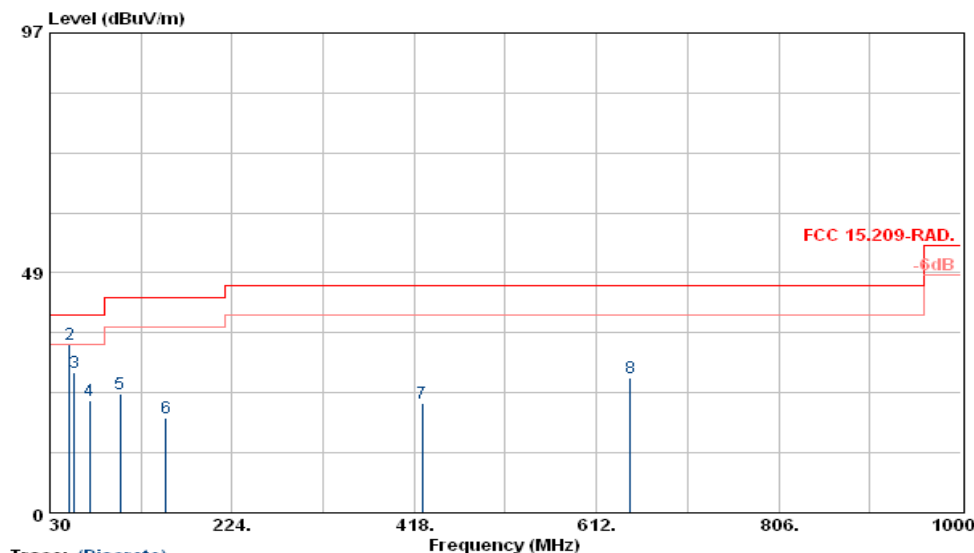
Detector Function: Quasi-Peak/PK

Test By: Jason

Frequency Range: 30MHz-1000MHz

Temperature : 25

Humidity : 65 %



Site : RF SITE  
Condition : FCC 15.209-RAD. 3m VULB9160 VERTICAL 151cm 0deg  
Project No. : ER/2008/80008  
Applicant : SGS CSTC  
EUT Description : GSM Mobile Phone  
EUT Model : COSUN2100  
Test Mode : GSM1900 Link //Mid Ch//H Plan  
Temp./Humid. : 25/65  
Operator : Jason

	Freq	Read Level	Antenna Factor	Preamp Factor	Cable Loss	Factor	Level	Limit Line	Over Limit	Remark
	MHz	dBrV	dBr/m	dB	dB	dBr/m	dBrV/m	dBrV/m	dB	
1	30.00	47.74	12.24	27.75	0.54	-14.97	32.77	40.00	-7.23	Peak
2	51.34	48.25	12.54	27.57	0.84	-14.19	34.06	40.00	-5.94	Peak
3	56.19	43.00	12.45	27.92	0.84	-14.63	28.37	40.00	-11.63	Peak
4	72.68	39.44	10.32	27.90	0.96	-16.62	22.82	40.00	-17.18	Peak
5	104.69	40.73	10.60	28.35	1.12	-16.63	24.10	43.50	-19.40	Peak
6	153.19	32.26	13.69	28.11	1.42	-13.00	19.26	43.50	-24.24	Peak
7	426.73	31.36	15.91	27.43	2.31	-9.21	22.15	46.00	-23.85	Peak
8	647.89	32.17	19.63	27.48	2.86	-4.99	27.18	46.00	-18.82	Peak

## Remark :

- (1) Measuring frequencies from 30 MHz to the 1GHz.
- (2) Radiated emissions measured in frequency range from 30 MHz to 1000MHz were made with an instrument using Peak detector mode.
- (3) Data of measurement within this frequency range shown “ - ” in the table above means the reading of emissions are attenuated more than 20dB below the permissible limits or the field strength is too small to be measured.
- (4) The IF bandwidth of SPA 30MHz to 1GHz was 100KHz.

Unless otherwise stated the results shown in this test report refer only to the sample(s) tested. This test report cannot be reproduced, except in full, without prior written permission of the Company. 除非另有說明，此報告結果僅對測試之樣品負責。本報告未經本公司書面許可，不可部份複製。  
This Test Report is issued by the Company under its General Conditions of Service which is available on request or accessible at [http://www.sgs.com/terms\\_and\\_conditions.htm](http://www.sgs.com/terms_and_conditions.htm).  
Attention is drawn to the limitation of liability, indemnification and jurisdiction issues defined therein. Any holder of this Test Report is advised that information contained hereon reflects the Company's findings at the time of its intervention only and within the limits of Client's instructions, if any. The Company's sole responsibility is to its Client and this document does not exonerate parties to a transaction from exercising all their rights and obligations under the transaction documents. Any unauthorized alteration, forgery or falsification of the content or appearance of this document is unlawful and offenders may be prosecuted to the fullest extent of the law.

Test Mode: GSM 1900 Link Mode

Test Date : Aug. 24, 2008

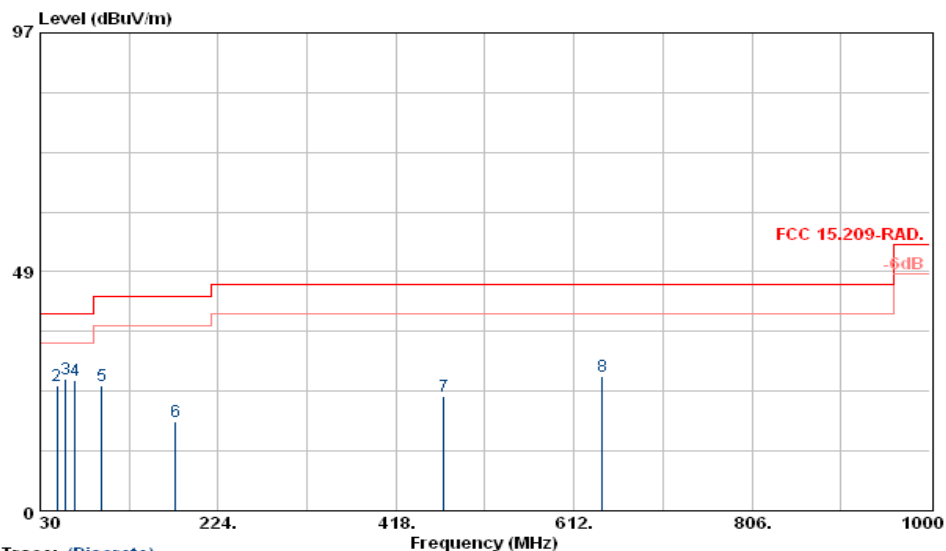
Detector Function: Quasi-Peak/PK

Test By: Janson

Frequency Range: 30MHz-1000MHz

Temperature : 25

Humidity : 65 %



Trace: (Discrete)

Site : RF SITE  
Condition : FCC 15.209-RAD. 3m VULB9160 HORIZONTAL 151 cm 360deg  
Project No. : ER/2008/80008  
Applicant : SGS CSTC  
EUT Description : GSM Mobile Phone  
EUT Model : COSUN2100  
Test Mode : GSM1900 Link //Mid Ch//H Plan  
Temp./Humid. : 25/65  
Operator : Jason

	Freq	ReadAntenna	Preamp	Cable	Factor	Level	Limit	Over	Remar
	MHz	dBuV	dB/m	dB	dB/m	dBuV/m	dBuV/m	dB	
1	30.00	43.45	12.24	27.75	0.54	-14.97	28.48	40.00	-11.52 Peak
2	48.43	39.47	12.64	27.46	0.84	-13.98	25.49	40.00	-14.51 Peak
3	58.13	41.54	12.56	28.06	0.84	-14.66	26.88	40.00	-13.12 Peak
4	67.83	42.05	11.53	28.09	0.96	-15.60	26.45	40.00	-13.55 Peak
5	96.93	42.52	9.94	28.22	1.12	-17.16	25.36	43.50	-18.14 Peak
6	177.44	32.51	11.97	27.81	1.46	-14.38	18.13	43.50	-25.37 Peak
7	470.38	31.81	16.64	27.66	2.47	-8.55	23.26	46.00	-22.74 Peak
8	643.04	32.30	19.58	27.53	2.81	-5.14	27.16	46.00	-18.84 Peak

## Remark :

- (1) Measuring frequencies from 30 MHz to the 1GHz.
- (2) Radiated emissions measured in frequency range from 30 MHz to 1000MHz were made with an instrument using Peak detector mode.
- (3) Data of measurement within this frequency range shown “ - ” in the table above means the reading of emissions are attenuated more than 20dB below the permissible limits or the field strength is too small to be measured.
- (4) The IF bandwidth of SPA 30MHz to 1GHz was 100KHz.

Unless otherwise stated the results shown in this test report refer only to the sample(s) tested. This test report cannot be reproduced, except in full, without prior written permission of the Company. 除非另有說明，此報告結果僅對測試之樣品負責。本報告未經本公司書面許可，不可部份複製。  
This Test Report is issued by the Company under its General Conditions of Service which is available on request or accessible at [http://www.sgs.com/terms\\_and\\_conditions.htm](http://www.sgs.com/terms_and_conditions.htm). Attention is drawn to the limitation of liability, indemnification and jurisdiction issues defined therein. Any holder of this Test Report is advised that information contained hereon reflects the Company's findings at the time of its intervention only and within the limits of Client's instructions, if any. The Company's sole responsibility is to its Client and this document does not exonerate parties to a transaction from exercising all their rights and obligations under the transaction documents. Any unauthorized alteration, forgery or falsification of the content or appearance of this document is unlawful and offenders may be prosecuted to the fullest extent of the law. °

## APPENDIX 1

### PHOTOGRAPHS OF SETUP

Unless otherwise stated the results shown in this test report refer only to the sample(s) tested. This test report cannot be reproduced, except in full, without prior written permission of the Company. 除非另有說明，此報告結果僅對測試之樣品負責。本報告未經本公司書面許可，不可部份複製。

This Test Report is issued by the Company under its General Conditions of Service which is available on request or accessible at [http://www.sgs.com/terms\\_and\\_conditions.htm](http://www.sgs.com/terms_and_conditions.htm). Attention is drawn to the limitation of liability, indemnification and jurisdiction issues defined therein. Any holder of this Test Report is advised that information contained hereon reflects the Company's findings at the time of its intervention only and within the limits of Client's instructions, if any. The Company's sole responsibility is to its Client and this document does not exonerate parties to a transaction from exercising all their rights and obligations under the transaction documents. Any unauthorized alteration, forgery or falsification of the content or appearance of this document is unlawful and offenders may be prosecuted to the fullest extent of the law. °

*Radiated Emission Test Setup Photo*



Unless otherwise stated the results shown in this test report refer only to the sample(s) tested. This test report cannot be reproduced, except in full, without prior written permission of the Company. 除非另有說明，此報告結果僅對測試之樣品負責。本報告未經本公司書面許可，不可部份複製。  
This Test Report is issued by the Company under its General Conditions of Service which is available on request or accessible at [http://www.sgs.com/terms\\_and\\_conditions.htm](http://www.sgs.com/terms_and_conditions.htm).  
Attention is drawn to the limitation of liability, indemnification and jurisdiction issues defined therein. Any holder of this Test Report is advised that information contained hereon reflects the Company's findings at the time of its intervention only and within the limits of Client's instructions, if any. The Company's sole responsibility is to its Client and this document does not exonerate parties to a transaction from exercising all their rights and obligations under the transaction documents. Any unauthorized alteration, forgery or falsification of the content or appearance of this document is unlawful and offenders may be prosecuted to the fullest extent of the law. °



### Conducted Emission Set up Photo



Unless otherwise stated the results shown in this test report refer only to the sample(s) tested. This test report cannot be reproduced, except in full, without prior written permission of the Company. 除非另有說明，此報告結果僅對測試之樣品負責。本報告未經本公司書面許可，不可部份複製。

This Test Report is issued by the Company under its General Conditions of Service which is available on request or accessible at [http://www.sgs.com/terms\\_and\\_conditions.htm](http://www.sgs.com/terms_and_conditions.htm). Attention is drawn to the limitation of liability, indemnification and jurisdiction issues defined therein. Any holder of this Test Report is advised that information contained hereon reflects the Company's findings at the time of its intervention only and within the limits of Client's instructions, if any. The Company's sole responsibility is to its Client and this document does not exonerate parties to a transaction from exercising all their rights and obligations under the transaction documents. Any unauthorized alteration, forgery or falsification of the content or appearance of this document is unlawful and offenders may be prosecuted to the fullest extent of the law.

## APPENDIX 2

# PHOTOGRAPHS OF EUT

Unless otherwise stated the results shown in this test report refer only to the sample(s) tested. This test report cannot be reproduced, except in full, without prior written permission of the Company. 除非另有說明，此報告結果僅對測試之樣品負責。本報告未經本公司書面許可，不可部份複製。

This Test Report is issued by the Company under its General Conditions of Service which is available on request or accessible at [http://www.sgs.com/terms\\_and\\_conditions.htm](http://www.sgs.com/terms_and_conditions.htm). Attention is drawn to the limitation of liability, indemnification and jurisdiction issues defined therein. Any holder of this Test Report is advised that information contained hereon reflects the Company's findings at the time of its intervention only and within the limits of Client's instructions, if any. The Company's sole responsibility is to its Client and this document does not exonerate parties to a transaction from exercising all their rights and obligations under the transaction documents. Any unauthorized alteration, forgery or falsification of the content or appearance of this document is unlawful and offenders may be prosecuted to the fullest extent of the law. °

## All of EUT



## Front View of EUT



Unless otherwise stated the results shown in this test report refer only to the sample(s) tested. This test report cannot be reproduced, except in full, without prior written permission of the Company. 除非另有說明，此報告結果僅對測試之樣品負責。本報告未經本公司書面許可，不可部份複製。  
 This Test Report is issued by the Company under its General Conditions of Service which is available on request or accessible at [http://www.sgs.com/terms\\_and\\_conditions.htm](http://www.sgs.com/terms_and_conditions.htm).  
 Attention is drawn to the limitation of liability, indemnification and jurisdiction issues defined therein. Any holder of this Test Report is advised that information contained hereon reflects the Company's findings at the time of its intervention only and within the limits of Client's instructions, if any. The Company's sole responsibility is to its Client and this document does not exonerate parties to a transaction from exercising all their rights and obligations under the transaction documents. Any unauthorized alteration, forgery or falsification of the content or appearance of this document is unlawful and offenders may be prosecuted to the fullest extent of the law.

*Back View of EUT*



*Side View of EUT – 1*



Unless otherwise stated the results shown in this test report refer only to the sample(s) tested. This test report cannot be reproduced, except in full, without prior written permission of the Company. 除非另有說明，此報告結果僅對測試之樣品負責。本報告未經本公司書面許可，不可部份複製。  
This Test Report is issued by the Company under its General Conditions of Service which is available on request or accessible at [http://www.sgs.com/terms\\_and\\_conditions.htm](http://www.sgs.com/terms_and_conditions.htm).  
Attention is drawn to the limitation of liability, indemnification and jurisdiction issues defined therein. Any holder of this Test Report is advised that information contained hereon reflects the Company's findings at the time of its intervention only and within the limits of Client's instructions, if any. The Company's sole responsibility is to its Client and this document does not exonerate parties to a transaction from exercising all their rights and obligations under the transaction documents. Any unauthorized alteration, forgery or falsification of the content or appearance of this document is unlawful and offenders may be prosecuted to the fullest extent of the law. °

*Side View of EUT – 2*



*Open View of EUT – 1*



Unless otherwise stated the results shown in this test report refer only to the sample(s) tested. This test report cannot be reproduced, except in full, without prior written permission of the Company. 除非另有說明，此報告結果僅對測試之樣品負責。本報告未經本公司書面許可，不可部份複製。  
This Test Report is issued by the Company under its General Conditions of Service which is available on request or accessible at [http://www.sgs.com/terms\\_and\\_conditions.htm](http://www.sgs.com/terms_and_conditions.htm).  
Attention is drawn to the limitation of liability, indemnification and jurisdiction issues defined therein. Any holder of this Test Report is advised that information contained hereon reflects the Company's findings at the time of its intervention only and within the limits of Client's instructions, if any. The Company's sole responsibility is to its Client and this document does not exonerate parties to a transaction from exercising all their rights and obligations under the transaction documents. Any unauthorized alteration, forgery or falsification of the content or appearance of this document is unlawful and offenders may be prosecuted to the fullest extent of the law. °

*Open View of EUT – 2*



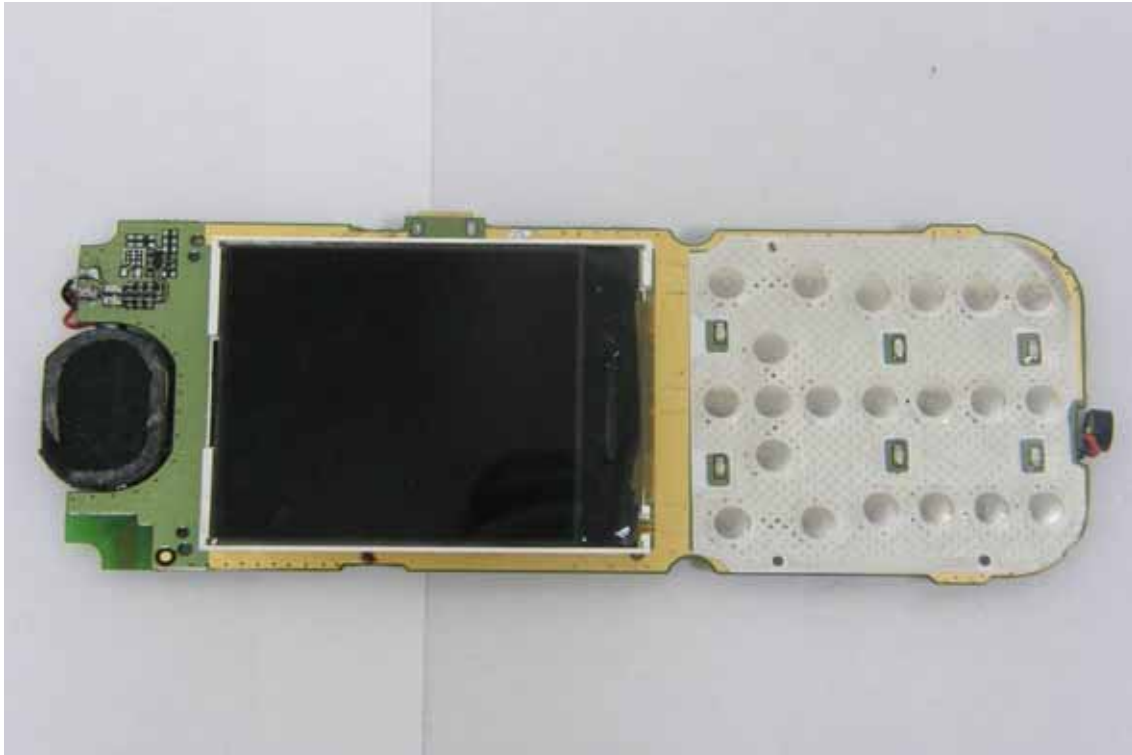
*Open View of EUT – 3*



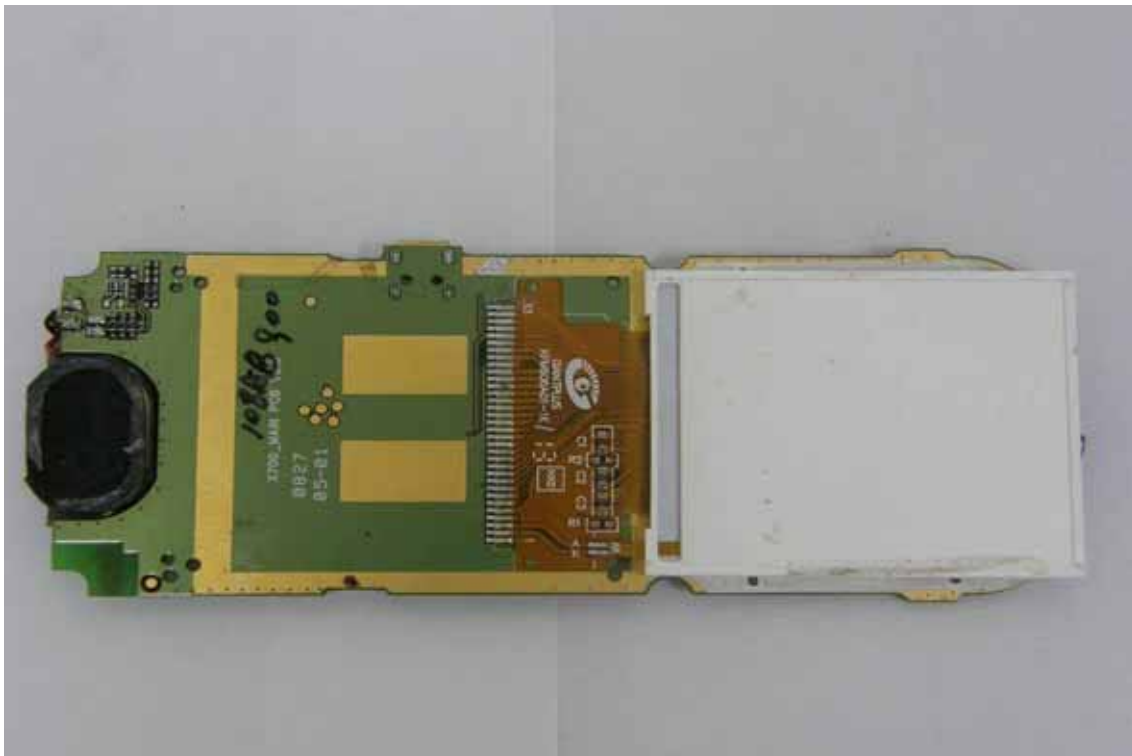
Unless otherwise stated the results shown in this test report refer only to the sample(s) tested. This test report cannot be reproduced, except in full, without prior written permission of the Company. 除非另有說明，此報告結果僅對測試之樣品負責。本報告未經本公司書面許可，不可部份複製。  
This Test Report is issued by the Company under its General Conditions of Service which is available on request or accessible at [http://www.sgs.com/terms\\_and\\_conditions.htm](http://www.sgs.com/terms_and_conditions.htm).  
Attention is drawn to the limitation of liability, indemnification and jurisdiction issues defined therein. Any holder of this Test Report is advised that information contained hereon reflects the Company's findings at the time of its intervention only and within the limits of Client's instructions, if any. The Company's sole responsibility is to its Client and this document does not exonerate parties to a transaction from exercising all their rights and obligations under the transaction documents. Any unauthorized alteration, forgery or falsification of the content or appearance of this document is unlawful and offenders may be prosecuted to the fullest extent of the law.



*Internal View of EUT – 1*

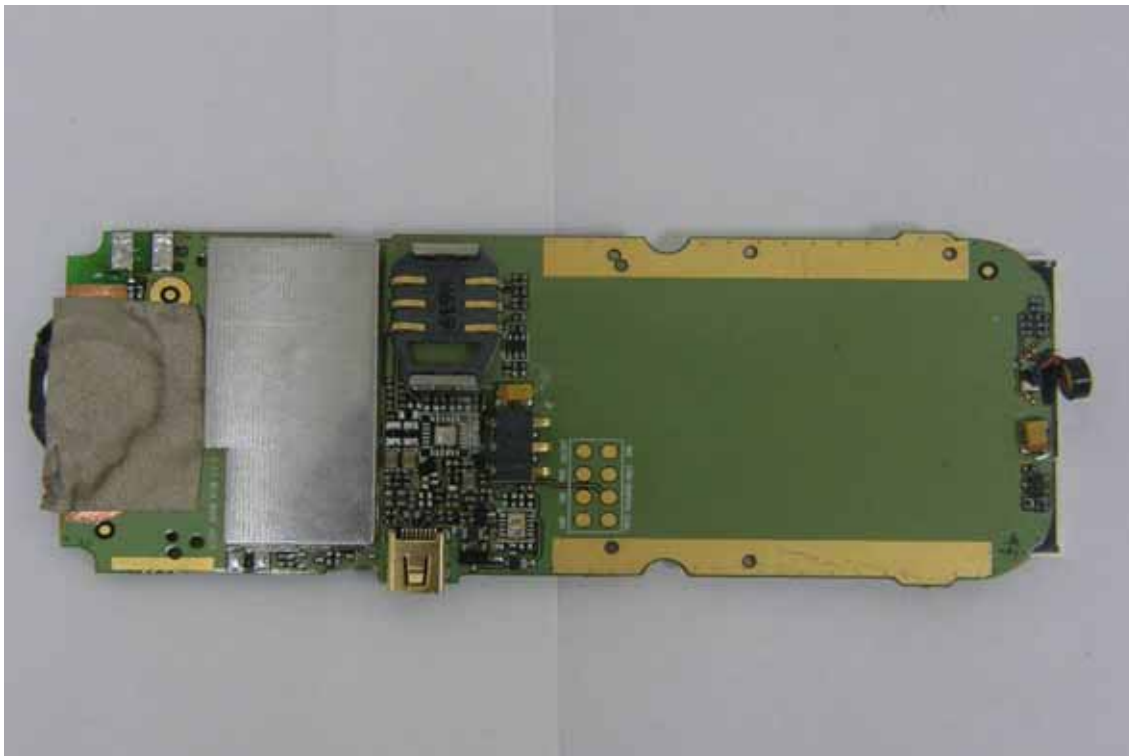


*Internal View of EUT – 2*

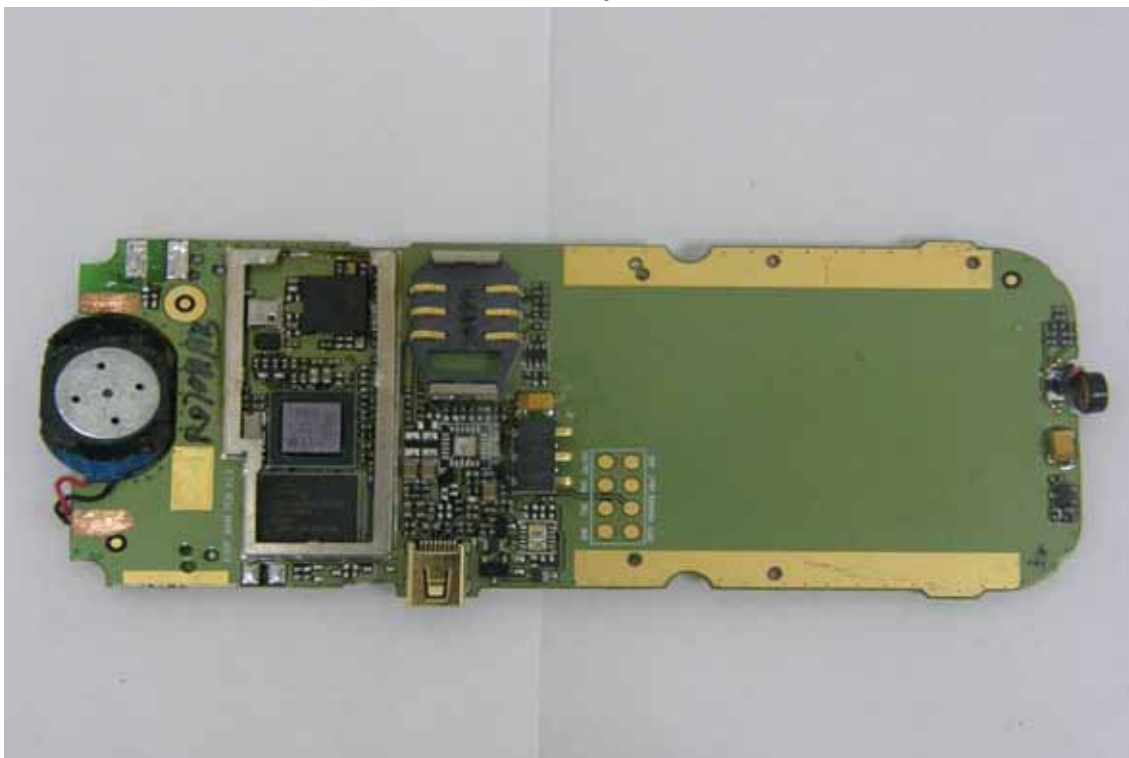


Unless otherwise stated the results shown in this test report refer only to the sample(s) tested. This test report cannot be reproduced, except in full, without prior written permission of the Company. 除非另有說明，此報告結果僅對測試之樣品負責。本報告未經本公司書面許可，不可部份複製。  
This Test Report is issued by the Company under its General Conditions of Service which is available on request or accessible at [http://www.sgs.com/terms\\_and\\_conditions.htm](http://www.sgs.com/terms_and_conditions.htm).  
Attention is drawn to the limitation of liability, indemnification and jurisdiction issues defined therein. Any holder of this Test Report is advised that information contained hereon reflects the Company's findings at the time of its intervention only and within the limits of Client's instructions, if any. The Company's sole responsibility is to its Client and this document does not exonerate parties to a transaction from exercising all their rights and obligations under the transaction documents. Any unauthorized alteration, forgery or falsification of the content or appearance of this document is unlawful and offenders may be prosecuted to the fullest extent of the law.

*Internal View of EUT – 3*



*Internal View of EUT – 4*



*~End of Report~*

Unless otherwise stated the results shown in this test report refer only to the sample(s) tested. This test report cannot be reproduced, except in full, without prior written permission of the Company. 除非另有說明，此報告結果僅對測試之樣品負責。本報告未經本公司書面許可，不可部份複製。  
This Test Report is issued by the Company under its General Conditions of Service which is available on request or accessible at [http://www.sgs.com/terms\\_and\\_conditions.htm](http://www.sgs.com/terms_and_conditions.htm).  
Attention is drawn to the limitation of liability, indemnification and jurisdiction issues defined therein. Any holder of this Test Report is advised that information contained hereon reflects the Company's findings at the time of its intervention only and within the limits of Client's instructions, if any. The Company's sole responsibility is to its Client and this document does not exonerate parties to a transaction from exercising all their rights and obligations under the transaction documents. Any unauthorized alteration, forgery or falsification of the content or appearance of this document is unlawful and offenders may be prosecuted to the fullest extent of the law.