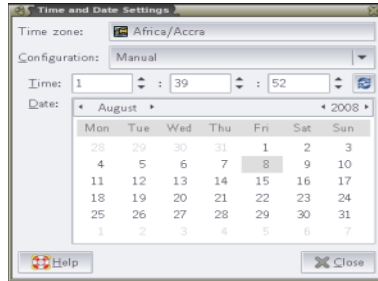


#### 4 Time setting

Adjusts the system date and time of your Limepc



Office  
Multimedia  
Web  
System

## Shutdown

Follow the instructions to shut down your LimePC.

Click the logo LimeOS on the bottom

1. Click the red power switch to shut down your LimePC
2. Click the About me(blue) on the taskbar to display the information about LimeOS



3  
Using the LimePC

## Office

The Work tab includes several office software items such as Documents, Spreadsheets, Presentations, PDF Reader, Calculator, Paint, Calendar, eBook, Dictionary, and WinRAR.

Follow the steps as provided by the respective wizard to finish the initialization and get your jobs done more efficiently.



Starts the spreadsheet to perform calculation and manage information

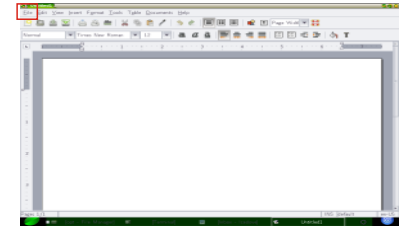
Starts the painter to draw what you have dreamed about

Starts the application to create, and share presentations

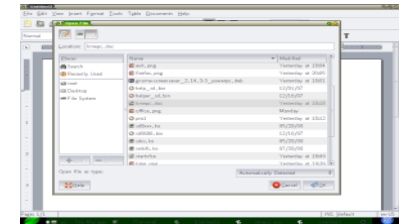
Starts the word processor to edit documents

The following example describes how to locate and open your document in your computer:

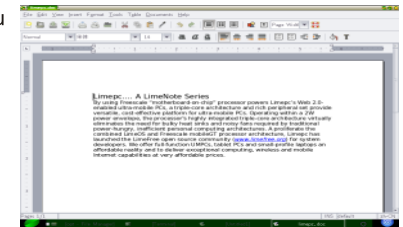
1. Double-click “Documents” to start “OpenOffice.org”.
2. Click “File” and select “Open”



3. Select your file and click “OK”



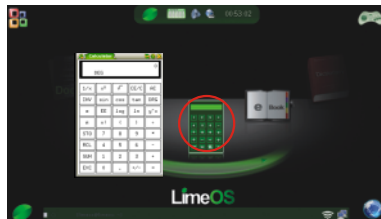
4. After the file is opened, you can start editing your document and doing your job.



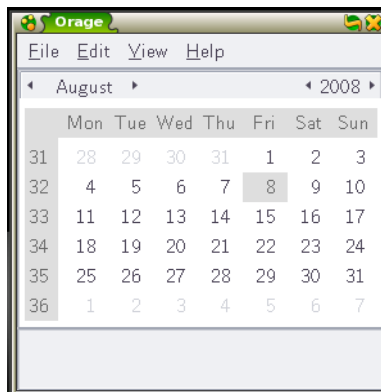


For other office applications, follow the general steps above to access files

Click the calculate to start it



Click the calendar to start it



For other applications(Ebook,WinRAR,Dictionary), follow the general steps above to use it

## Multimedia

The Multimedia tab includes several entertainment software items like **Music, Video, Photo, Flash, Game.**

Follow the steps as provided by the respective LimeOS to finish the initialization and get your enjoyment



Video

Photo

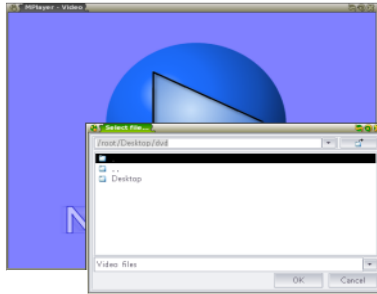
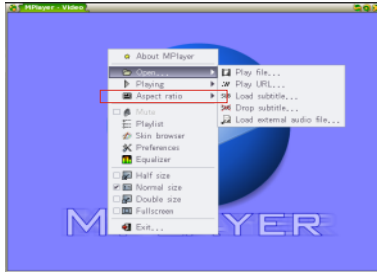
Music

Flash

Game

## Enjoy your Video

1. Click the “Video” item to start the Mplayer
2. Right-click in the Mplayer area to select “Open”
3. Choose your favorite video ,click OK to enjoy your video journey



For other multimedia applications(Music,Flash,Photo) follow the general steps above to access files

## Play the game

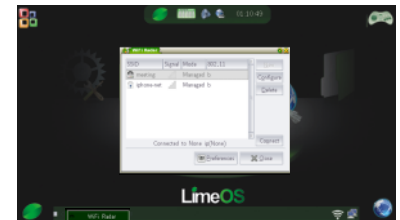
Click the “Game” item, there are lots of interesting games waiting for you



## Web

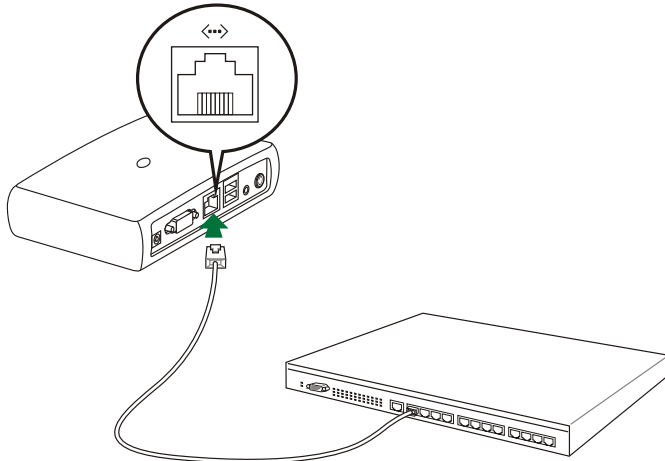
### Configuring a wireless network connection

1. Click “Wireless Networks” from Web tab
2. Select the wireless access point you want to connect to from the list and click “Connect” to build the connection



## Configuring a network

If you want to obtain network access, connect the network cable, with RJ-45 connectors on each end, to the network port on the LimePC and the other end to a hub or switch. The illustration below is the example of your LimePC connected to a network hub or switch for use with the built-in Ethernet controller. Connect to network before enjoying all the network services and functions in LimePC.



Network cable with RJ-45 connectors

## Local Area Network

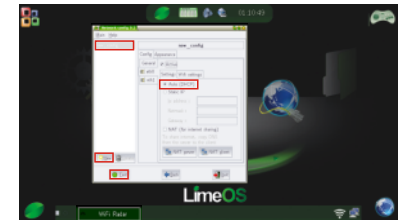
1. From Web tab, select “Network” to start the configuration.



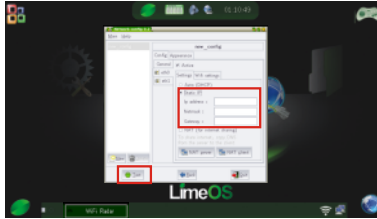
2. Click “Edit” to edit a network connection.



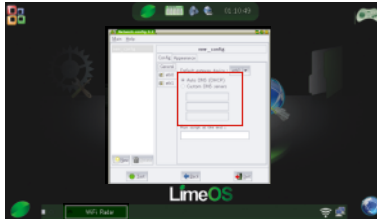
3. Click “New” to create a network connection. Double the New-config to change the name of this network. Select the “ Auto(DHCP)” , then click the “ Test” to test your network



4. You also can select the “Static IP”, enter the IP address, Subnet mask and Gateway from your service provider, then click the “Test” to test your network



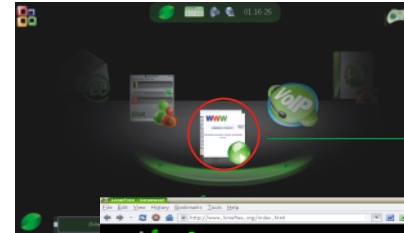
5. There is no need to enter the DNS and WINS address unless you want to override the server provided DNS server address. If so, enter the preferred DNS Server address, alternative address and WINS address of your service provider.



Contact your service provider if you have problem connecting to the internet.

## Browsing web pages

After you finish the network setup, click Web from the Web tab to launch the Mozilla Firefox web browser and start enjoying net surfing.



Launches the Mozilla Firefox web browser



Visit our LimePC homepage (<http://www.Limefree.org>) to obtain the latest information



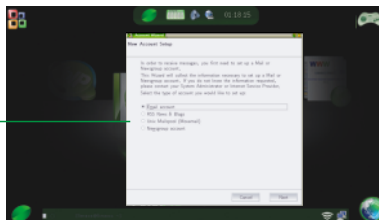
If you think the browser font size too small to read, go to View > Text Size to adjust.

## Accessing E-mail

Click to open the mail service



Create your email account



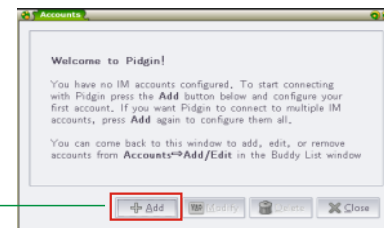
## Chatting with friends

Click to start your chat journey



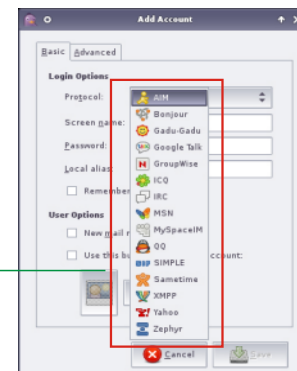
1. Press the “Add” button to configure your instant messaging account.

Press to select an instant messaging service



2. Select an instant messaging service you are using from the drop-down list and fill out your password along with other necessary information to login your account.

Select an instant messaging service



If you do not have an IM account, apply one from the service providers. If you have multiple IM accounts from different service providers, press Add button again to add and configure more IM accounts.

## System

The System tab includes several tools that let you to configure your Limepc the way you like



### Net setting

Monitor

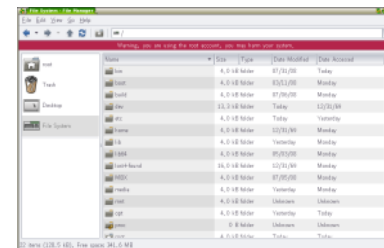
### System setting

## File management

Disk

## File management

Click the “File” management item to view all of your file



## System setting

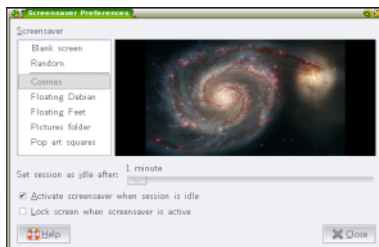
Click the “System setting” item you will get the setting panel as right





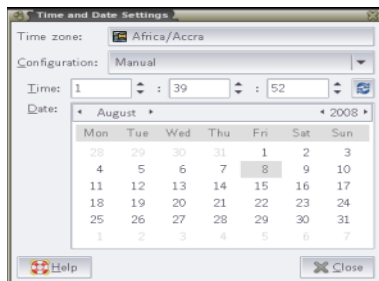
## Screensaver setting

Select your favorite screensaver



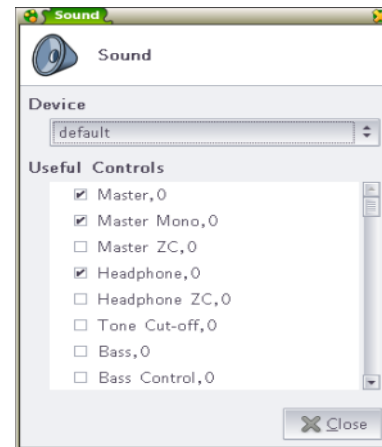
## Time setting

Adjusts the system date and time of your Limepc



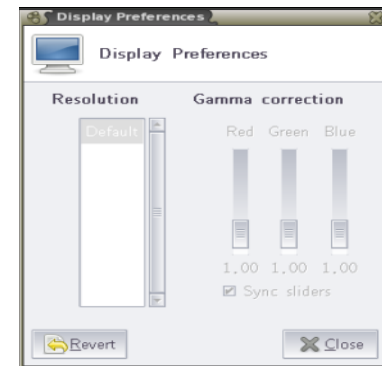
## Sound setting

Choose your device to get the best sound



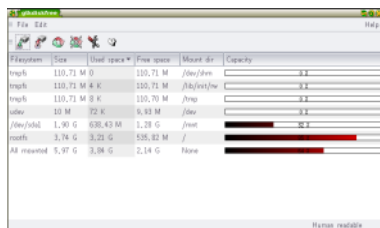
## Display setting

Adjust the display and balance by moving the sliders.



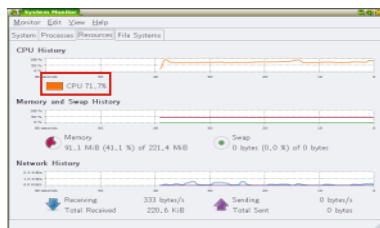
## Disk Utility

Selecting Disk Utility allows you to check your LimePC disk condition including total disk space, the used space, and the remaining space

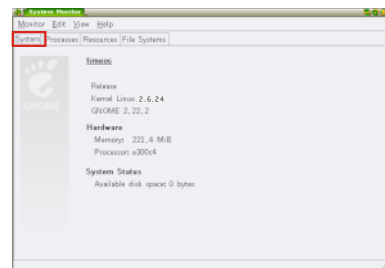


## System monitor

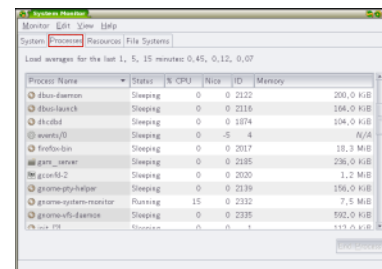
Select Resources to see the CPU history, Memory and Swap History, Network History



Select the System to displays the system information of your LimePC.



The Processes Manager displays the application processes. Tweak your LimePC up if it is running slow by killing the application with Processes Manager



Using Processes Manager to terminate applications may cause damage to the files that the application is reading or editing. We do not recommend you use Processes Manager to stop the applications that are working on your important data. Or, back up your important data before using Processes Manager

## WiFi setting / Net setting



See the Web chapter to learn how to setting the WiFi and Net

FCC NOTE:

THE MANUFACTURER IS NOT RESPONSIBLE FOR ANY RADIO OR TV INTERFERENCE CAUSED BY UNAUTHORIZED MODIFICATIONS TO THIS EQUIPMENT. SUCH MODIFICATIONS COULD VOID THE USER'S AUTHORITY TO OPERATE THE EQUIPMENT.

NOTE: This equipment has been tested and found to comply with the limits for a Class B digital device, pursuant to part 15 of the FCC Rules. These limits are designed to provide reasonable protection against harmful interference in a residential installation.

This equipment generates, uses and can radiate radio frequency energy and, if not installed and used in accordance with the instructions, may cause harmful interference to radio communications. However, there is no guarantee that interference will not occur in a particular installation. If this equipment does cause harmful interference to radio or television reception, which can be determined by turning the equipment off and on, the user is encouraged to try to correct the interference by one or more of the following measures:

- Reorient or relocate the receiving antenna.
- Increase the separation between the equipment and receiver.
- Connect the equipment into an outlet on a circuit different from that to which the receiver is connected.
- Consult the dealer or an experienced radio/TV technician for help.