



BMX-SPT User Guide

© 2008 Next**Wave** Wireless Inc.
All Rights Reserved.

The information disclosed herein is confidential and the exclusive property of Next**Wave** Wireless Inc. No part of this work may be reproduced in any form or by any means, electronic, mechanical, photocopying, recording, scanning or otherwise, without the prior written permission of Next**Wave** Wireless Inc.

Next**Wave** Wireless and the Next**Wave** Wireless logo are trademarks of Next**Wave** Wireless Inc. and/or its affiliates. All other trademarks, registered trademarks, service marks or registered service marks are the property of their respective owner/s. Information in this document is subject to change without notice. NextWave Wireless assumes no responsibility for any errors that may appear in this document.

Contents

READ THIS BEFORE OPERATING YOUR BMX-SPT	4
WELCOME	6
1. How SPOT Works	6
2. Getting Started.....	7
3. Installing Batteries	8
4. Using SPOT	9
5. System Function and Indicators	11
6. Care and Support	12
NEXTWAVE BMX-SPT WIMAX MODEM.....	15
1. WiMAX Mode.....	15
2. SPOT Mode.....	15
FEATURE SUMMARY.....	16
HOW IT WORKS	17
SETUP	18
1. Setup Procedure.....	18
2. Plug the dual USB cable into your PC host.	19
3. Turning the Device On and Off	20
SPECIFIC ABSORPTION RATE (SAR) STATEMENT	ERROR! BOOKMARK NOT DEFINED.

Read this before operating your BMX-SPT

Your BMX-SPT contains a WiMAX modem to allow wireless Internet access through the supplied USB cable connected between your BMX-SPT and PC. It also contains a SPOT Satellite Personal Tracker. When connecting the USB cable to a laptop or PC, the SPOT will be disabled and cannot be used for sending help or 911 messages. When sending a help, 911, or text message, be sure to disconnect the laptop or PC from the supplied USB cable.

The first part of this User Guide explains the SPOT operation, the second part explains the WiMAX Internet access operation.

The WiMAX modem draws power from the laptop or PC power source by way of the USB cable. It also charges the BMX-SPT rechargeable battery depending on power availability.

Regulatory Information – Declaration of Conformity

Trade Name: ORC 2008
Model Number: BMX-SPT
Responsible Party: NextWave Wireless Inc.
Address: 3611 Valley Centre Drive, San Diego CA 92130
Telephone: 858-480-0540

This device complies with part 15, part 25, and part 27 of the FCC rules listed in the Code of Federal Regulations Title 47. Changes or modifications not expressly approved by the party responsible for compliance could void the user's authority to operate the equipment.

Operation is subject to the following two conditions: (1) This device may not cause harmful interference and (2) this device must accept any interference received, including interference that may cause undesired operation.

In order to comply with FCC RF Exposure requirements, when used in WiMAX mode, a minimum separation distance of 20 cm must be maintained between this device and all persons.

Note: This equipment has been tested and found to comply with the limits for a Class B digital device, pursuant to part 15 of the FCC Rules. These limits are designed to provide reasonable protection against harmful interference in a residential installation. This equipment generates, uses and can radiate radio frequency energy and, if not installed and used in accordance with the instructions, may cause harmful interference to radio communications. However, there is no guarantee that interference will not occur in a particular installation. If this equipment does cause harmful interference to radio or television reception, which can be determined by turning the equipment off and on, the user is encouraged to try to correct the interference by one or more of the following measures:

- Reorient or relocate the receiving antenna.
- Increase the separation between the equipment and receiver.
- Connect the equipment into an outlet on a circuit different from that to which the receiver is connected.
- Consult the dealer or an experienced radio/TV technician for help.

Note

This equipment has been tested and found to comply with the limits for a Class B digital device, pursuant to Part 15, Part 25 and Part 27 of CFR Title 47. These limits are designed to provide reasonable protection against harmful interference in a typical environment.

For the State of California, USA Only

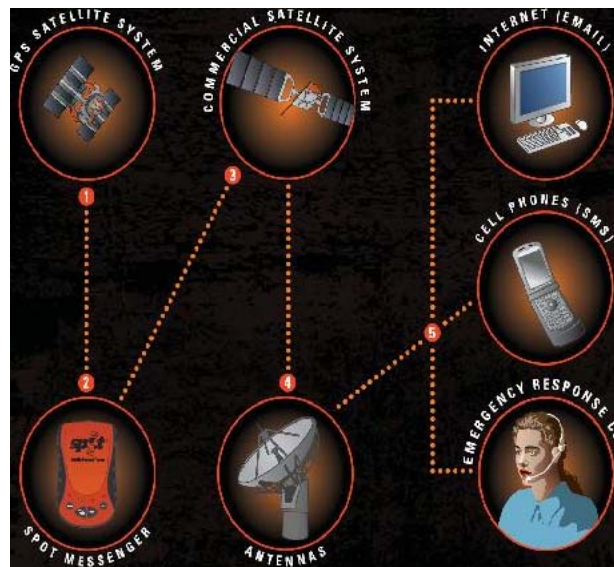
Perchlorate Material: Lithium batteries may contain perchlorate. Special handling may apply: see www.dtsc.ca.gov/hazardouswaste/perchlorate

WELCOME

The great outdoors can be a big, uncertain place. But you've just purchased the most peace of mind available for the active outdoor adventurer or smartly-prepared individual.

SPOT is the world's first satellite messenger, using the GPS satellite system to determine your location and communications satellites to transmit that information to the chosen recipient. SPOT gives you and your loved ones peace of mind by allowing you to notify them or a GEOS international 9-1-1 Emergency Response Center of your exact location via Google Maps™, and to send for assistance in time of need around the world, completely independent of cellular phone or other land-based radio coverage.

To begin using SPOT, visit findmespot.com to select a service plan and activate.



1. How SPOT Works

- ❶ GPS satellites provide coordinates.
- ❷ SPOT messenger's onboard GPS chip determines your exact coordinates and sends your location and message to the SPOT satellite system.
- ❸ SPOT commercial satellites relay your message to specific satellite antennas around the world.
- ❹ Satellite antennas and supporting equipment route your message and location to the appropriate network.
- ❺ Your message is delivered according to your instructions via text message, email or emergency notification via the response center.

Powered by Google Maps™, Google

When SPOT sends a text or email message to one of your contacts or to a GEOS International 9-1-1 Emergency Response Center, it includes your exact coordinates and a web link to view your location using Google Maps™.



2. Getting Started

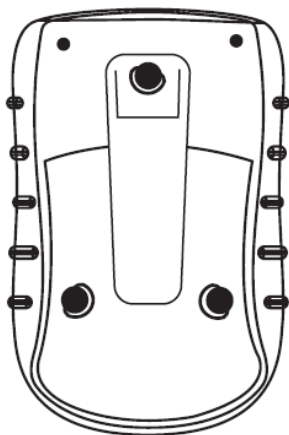
Your SPOT comes with the following:

- SPOT satellite messenger
- Rechargeable lithium batteries
- Special dual USB cable
- User's Guide

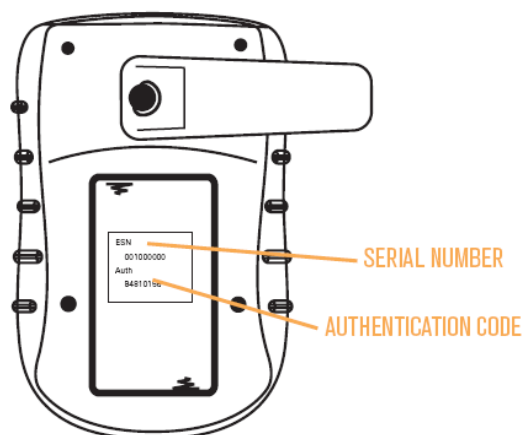
Log on to www.findmespot.com to register your SPOT messenger and activate your service. To do so, you need to have the following available:

- Personal information
- Credit card information
- SPOT unit serial number and 8-digit authentication code located in the battery compartment

back of unit



inside battery compartment



3. Installing Batteries

The BMX-SPT comes with a rechargeable Lithium Ion battery and will not need installation, the battery will be charged when connected to a Personal computer through the supplied USB cable.

Creating Your Account

Log on to www.findmespot.com. Follow the instructions online to choose your subscription plan and register your SPOT unit. Once complete, you can set up your personal account information, activate your emergency 9-1-1 services, and create your SPOTteam – the friends and family members you wish to receive your SPOT messages via cellular short messaging service (SMS) and/or email. For questions or additional support, visit www.findmespot.com or call 1-866-OK1-SPOT (1-866-651-7768).

(NOTE: SPOTteam members can be changed at any time simply by logging into your account. For worldwide phone contacts or for support outside the U.S., visit www.findmespot.com.)

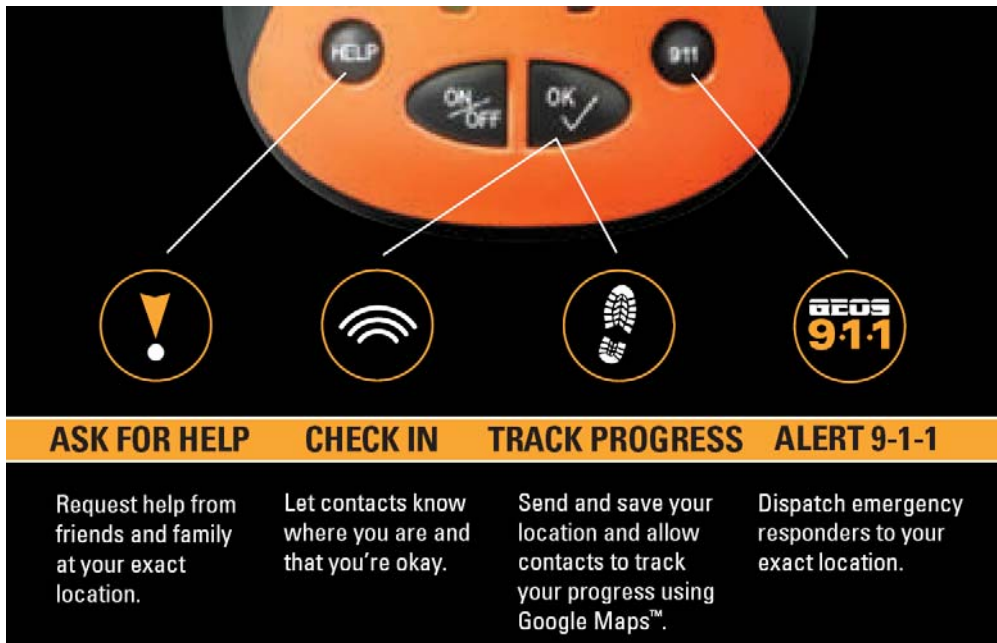
Additional Services

At www.findmespot.com you can also purchase additional service options, like SPOTcasting tracking service, which allows you to use waypoints to mark your progress in real time as you travel, and GEOS rescue service, which provides a global private Search and Rescue Benefit. To learn more about GEOS Alliance services, visit www.geosalliance.com.



POWERED BY GOOGLE MAPS™

EMERGENCY ASSISTANCE WHERE EMERGENCIES HAPPEN. The SPOT Satellite Messenger gives you a line of communication with friends and family when and where you want it, and emergency assistance when and where you need it. For the low cost of a service subscription, SPOT works around the world, even where cell phones don't.



4. Using SPOT

POWER

SPOT has a separate power button to ensure long battery life and to help avoid sending messages accidentally. To turn SPOT on, press the ON/OFF button. You must then wait an additional 2 seconds before activating any SPOT function. When power is on, the indicator light will blink once every 3 seconds. This is also helpful for making SPOT more visible in the dark. To turn SPOT off, press and hold the ON/OFF button for 3 seconds.

TESTING SPOT

SPOT is designed for maximum reliability. SPOT performs a self-diagnostic test each time it is powered on. Additionally, SPOT strongly recommends that you send and verify an OK✓ message each time before use. This allows you to evaluate the entire messaging system, from the operational condition of the messenger to the readiness of those you've chosen to receive your messages.



ALERT 9-1-1

Use this option in the event of a life threatening or other critical emergency. The Emergency Response Center notifies the appropriate emergency responders based on your location and personal information – which may include local police, highway patrol, the Coast Guard, your country's embassy or consulate, or other emergency response or search & rescue teams – as well as contacting the primary and secondary emergency contact numbers you have entered in the SPOT web service. Even if SPOT cannot acquire its location from the GPS network, it will still attempt to send a distress signal – without exact location – to the Emergency Response Center. There is no test mode. If you activate the 9-1-1 function, the Emergency Response Center will treat it as a real emergency.

To Activate 9-1-1 Mode:

In an emergency, press and hold the 9-1-1 button for at least 2 seconds. A distress signal and your exact location will be sent to an Emergency Response Center every 5 minutes until cancelled. Once activated, the indicator light will blink green every 3 seconds, and turn solid green for 5 seconds when a message is being sent.

To Cancel:

Press and hold the 9-1-1 button for at least 3 seconds. The blinking green light will blink red to indicate that it is preparing to send a "Cancel" message, and will then turn solid red for 5 seconds to indicate that the message has been sent.



CHECK IN – SPOTcheckingSM Google

Use this feature to let your SPOTteam know that all is well, notify them of your location, or save waypoints so you can review your route at a later date.

To Activate CHECK IN Mode:

Press the OK√ button. The SPOTteam members you have specified in your online account will receive a pre-programmed SPOTcheck message via text and/or email with a link to Google Maps™ with your exact location. Once activated, the indicator light will blink green every 3 seconds, and turn solid green for 5 seconds when a SPOTchecking message is being sent. In the SPOTchecking mode, your SPOT messenger sends your message three times for maximum reliability. The SPOT network will deliver the first message received to your SPOTteam and discard the remaining identical messages. To make sure SPOT has enough time to repeat your messages, leave the SPOT messenger on and with a clear view of the sky for 20 minutes.

To Disable:

You cannot cancel a SPOTcheck message, but you can stop any unsent SPOTcheck messages by turning off the messenger at any time. Unsent SPOTcheck messages are automatically disabled when you activate either 9-1-1 or HELP.



TRACK PROGRESS – SPOTcastingSM Premium Upgrade Service Google

Use this feature to send your location to your SPOT account every 10 minutes so your SPOTteam can follow your progress in real time, or to save waypoints so you can view your full route at a later date. (NOTE: Additional fees may apply for this service. See account information at www.findmespot.com to learn more.)

Activate SPOTcastingSM Mode:

Press and hold the OK√ button for more than 5 seconds. The green indicator will begin blinking every 3 seconds, and the SPOTteam members you have given access to your online account can view your progress. Your exact location is updated every 10 minutes for 24 hours. To continue tracking after 24 hours, you must activate the unit again. Once activated, the OK√ indicator light will blink green every 3 seconds, and turn solid green for 5 seconds when a SPOTcasting message is being sent. SPOTcheck must be inactive for SPOTcasting to be activated.

To Cancel:

Turn unit off by pressing and holding the ON/OFF button for 3 seconds, or press and hold the OK/√ button for 5 seconds to terminate SPOTcasting. SPOTcasting is automatically disabled when you activate either 9-1-1 or HELP.

5. System Function and Indicators

GPS Coordinate Acquisition

The first time you turn on SPOT, or after moving more than 600 miles since its last use, SPOT will normally determine your coordinates within 4 minutes. In rare instances, this could take longer. After that, SPOT will normally determine your GPS coordinates in less than one minute. Sending a CHECK-IN message as a test each time before you use SPOT will let SPOT determine GPS coordinates and greatly reduce the time needed for additional messages.

If SPOT is unable to acquire its GPS coordinates, it will still attempt to send a satellite message, without coordinates, when either the 9-1-1 or HELP functions are activated. In the rare case that SPOT cannot obtain your GPS coordinates, but sends a 9-1-1 message, the Emergency Response Center will contact the primary and secondary contacts on your account to notify them of the distress message. The Emergency Response Center will then continually monitor the SPOT network for further messages.

SPOT Message Schedule

The SPOT network, both hardware and software, are designed to work together to provide outstanding quality and reliability. With a perfect view of the entire sky, the SPOT network is designed to successfully send virtually every message. In everyday conditions, the view to the sky is often blocked due to hills, buildings or other obstructions. It's normal for some messages to be blocked by your environment. That's why the SPOT Messenger is scheduled to automatically send multiple messages in every mode – giving you excellent overall reliability.

Message Indicators

For all functions, SPOT lets you know what it's doing. While preparing to send a message, the function indicator and ON/OFF lights will blink green every 3 seconds, in unison. Once SPOT has determined your GPS coordinates and sent your message, the indicator lights will turn solid green for 5 seconds and then continue flashing in unison. If the lights blink out of unison, this indicates that the messenger was not able to determine GPS coordinates, usually due to a blocked view of the sky. To correct, move the SPOT messenger to an area with a clearer view of the sky, where SPOT will automatically continue searching for a GPS signal. The lights will blink in unison once it is successful.

Coverage

SPOT works around the world, including virtually all of North America, Europe and Australia, portions of South America, Northern Africa and Northeastern Asia, and hundreds or thousands of miles off-shore of these areas. It is important that you check coverage for your destination before traveling. For latest coverage information, visit www.findmespot.com.

Belt Clip Usage

For maximum GPS performance in SPOTcasting mode, hold the SPOT messenger away from your body with a clear view of the sky until the lights turn solid for 5 seconds (after approximately 4 minutes) before attaching the device to your belt.

- SPOTcasting tracking mode: Approx. 14 days
- 9-1-1 mode: Up to 7 consecutive days
- SPOTcheck OK/√: 1900 messages

6. Care and Support

of their life or less left. If the ON/OFF light flashes red, or if you are unsure as to the battery life remaining, replace the batteries. Always test and verify your SPOT device before any trip.

- Under normal usage a SPOT messenger with fully charged batteries should meet or exceed the following:
 - Power ON, unused: Approx. 1 year
 - SPOTcasting tracking mode: Approx. 14 days
 - 9-1-1 mode: Up to 7 consecutive days
 - HELP mode: up to 1900 messages
 - SPOTcheck OK/√: up to 1900 messages

Operating Conditions and Climate

Your SPOT Satellite Messenger is designed to go anywhere. However, like all electronic devices, it has its limits. SPOT relies upon GPS and low earth orbit satellites to fix your location and send your messages. To work, the SPOT logo (which is directly above the transmitter) needs to have an unobstructed view of the sky, either outdoors or in a glass-enclosed area such as in a vehicle. For safety, keep the following in mind regarding the care and usage of SPOT:

- SPOT floats, but the SPOT logo needs to be facing the sky for the unit to work
- Waterproof to a depth of 1 meter for up to 30 minutes
- Operating Temperatures: -40°F to +185°F
- Operating Altitude: -300 ft to +21,300 ft
- Humidity and Salt Fog Rated
- OSHA Certified Intrinsically Safe to Class 1, Division 1, Group A-D standards

Cleaning

Follow these general rules when cleaning the outside of your SPOT messenger:

- Make sure power is OFF.
- Use a damp, soft, lint-free cloth. Avoid excess moisture near buttons or openings.
- Don't use aerosol sprays, solvents, alcohol or abrasives.
- Do not attempt to open the SPOT unit case.

Troubleshooting

Spot performs a self-diagnostic test each time it is powered on. Additionally, for maximum security, Spot strongly recommends that you send and verify an OK/Check message each time before use. This allows you to evaluate your entire messaging system, from the operational condition of the messenger to the readiness of those you've chosen to notify of your messages

Conditions:

- OK/√ indicator light blinks RED every second immediately after ON/OFF button is pressed:
 - Unit self-test failed. Contact manufacturer.
- ON/OFF indicator light blinks RED every second:
 - Low batteries. Replace with new AA lithium type batteries. The ON/OFF light will flash red when lithium batteries have approximately 30% of their life or less left. If the ON/OFF light flashes red, or if you are unsure as to the battery life remaining, replace the batteries.
 - Improper battery type. SPOT is designed to use AA lithium batteries. Alkaline or other battery technologies are not compatible and may cause malfunction of the device. However, in a critical situation, non-lithium batteries may allow the unit to operate for a limited period of time if no lithium batteries are available.
- Not all scheduled messages are received:
 - The SPOT network, both hardware and software, are designed to work together to provide outstanding quality and reliability. With a perfect view of the entire sky, the SPOT network is designed to successfully send virtually every message. In everyday conditions, the view to the sky is often blocked due to hills, buildings or other obstructions. It's normal for some messages to be blocked by your environment. Therefore, SPOT automatically sends repeat messages, resulting in excellent overall reliability.



TRACK PROGRESS

Selecting "Track" messages in your online account to display allows contacts to follow your progress in real time.



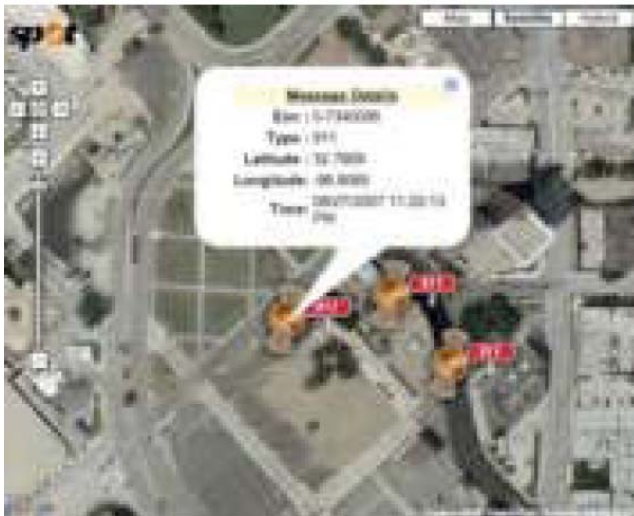
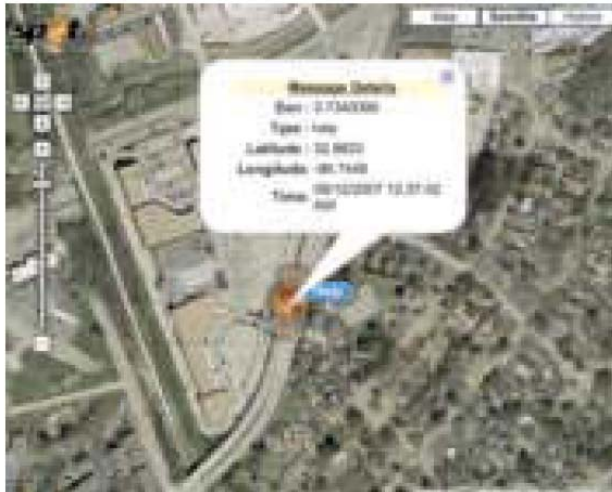
CHECK IN

By clicking on the link in an OK✓ email, your contacts are shown your exact location via Google Maps™.



ASK FOR HELP

HELP messages are sent every 5 minutes for one hour, updating your contacts with your exact location.



ALERT 9-1-1

SPOT sends 9-1-1 messages every 5 minutes, allowing you to move while updating authorities with your location.



For additional questions or support: Visit <http://www.findmespot.com> or call 1-866-OK1-SPOT (1-866-651-7768).

NextWave BMX-SPT WiMAX Modem

The NextWave BMX-SPT device is a highly-integrated WiMAX modem and a SPOT Personal Satellite Tracker in a single unit. The device can be used to connect a user to a high-speed Internet connection using WiMAX, or it can provide the full functionality of the SPOT Satellite Personal Tracker.

Note: Don't worry about draining the SPOT batteries while using the Internet because the WiMAX power is taken from the PC through the supplied special dual USB cable. Do not use any other USB cable with the BMX-SPT.

1. WiMAX Mode

In WiMAX mode, your BMX-SPT is used as a cabled modem device for your personal computer to access the internet.

Note: The WiMAX transmitter and Internet connections function only when a USB cable is attached to the laptop or PC. Use only the supplied dual USB cable with the BMX-SPT device.



2. SPOT Mode

When the device is used in SPOT mode, the full functionality of the SPOT device is allowed.

Note: The WiMAX function is powered off in this mode and cannot be used by design. The WiMax function automatically turns off when the USB cable is not connected to a personal computer.

Feature Summary

The following list summarizes the key features and characteristics of the BMX-SPT multi-mode modem product:

WiMAX Features

- Internally powered from the supplied USB cable using two USB ports
- Provides up to 12 Mbps data rate using standard WiMAX technology
- Internal antenna system for simplest design and use
- Simple setup using standard USB drivers on your PC

SPOT Features

- Simple 4-button interface
- Provides satellite reporting of your current GPS location
- Simple Web interface setup
- Up to 5 years on a single battery in standby mode

Physical Characteristics and Operating Conditions

- Belt clip for easy carrying.
- Operating temperature range: -30 °C to +85 °C

How It Works

The BMX-SPT (ORC 2008) unit is a wireless Internet access modem that you connect to your laptop or desktop computer for high-speed Internet access through the Open Range Communication WiMAX Network. In this mode it is used for high-speed data connections. It can also track your location and notify friends and family when you are on the move, in the Satellite Tracker mode.

When connected to a personal computer with the supplied USB cable, the device can provide a high-speed wireless connection for Internet access. Authentication is performed via a simple connection manager and setup routine.

When the SPOT unit detects that the USB has been disconnected from a Personal Computer, the SPOT unit turns on and is powered by the internal rechargeable battery. When in **SPOT mode**, the BMX-SPT operates as a SPOT Satellite Personal Tracking device and the WiMax module is turned off. In **WiMAX mode**, the BMX-SPT runs on electricity drawn from the USB ports of a personal computer, and can also charge the battery depending on power needs of the WiMax module. The battery will be charged from the USB power of a laptop or desktop computer and will not need to be changed.

Setup

The ORC 2008 comes with the following accessories:

- **USB Cable:** supplied for connection to the users laptop or PC using dual USB ports
- **Main Unit:** Fully assembled with SPOT and WiMax modules and single battery.
- **Battery:** Lithium Ion rechargeable battery
- **Installation CD:** Installation disk for Windows XP Service pack 2 for the WiMAX modem drivers and setup
- **SPOT User Manual:** The SPOT user manual for setup and operation

1. Setup Procedure

To set up the BMX-SPT (i.e., load all the necessary drivers and setup routines for the PC interface to the WiMAX Modem), do the following:

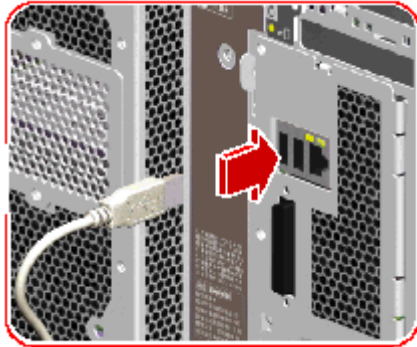
1. Insert installation disk into DVD drive
2. Please insert the supplied CD into your computer's CD-ROM and follow the onscreen instructions to install the Software.

Please make sure you have the settings that were supplied with your WiMax modem during the rest of the installation.



2. Plug the dual USB cable into your PC host.

After the software is installed, connect the USB cable to both of the USB ports on Computer



Connecting the USB cable to the laptop or PC will automatically disable the SPOT functionality and will turn on the WIMAX modem.

Remember that in order to re-enable the SPOT functionality you must unplug the dual USB cable from the computer.

Note: Make sure both plugs are connected to your PC, otherwise the device might not be able to transmit.

The dual-headed USB is shown in Figure 1.



Figure 1 – SPOT with Dual USB

4. Run the WiMAX connection manager and wait for prompts.

5. Enter the unit's serial number when asked.

Note: The serial number is located in the battery case. Remove the battery case's cover and read the number on the label sticker.

6. Run the authentication script.
7. Open a Browser window and connect to the Internet.

The unit is now operating in the WiMAX mode.

3. Turning the Device On and Off

The Satellite Personal Tracker (SPOT) has an On/Off button, but cannot be turned on when the USB is connected to a personal computer. It operates only when the USB is disconnected.

The WiMax portion of the device automatically shuts off when the USB cable is disconnected from a personal computer and automatically starts when the USB cable is connected to a PC.

The WiMAX Modem device does not have an ON / OFF switch that can be activated outside the case. It is activated and deactivated by the insertion of the USB connection **only**.

Note: When the cable is connected, the SPOT switch is no longer functional.