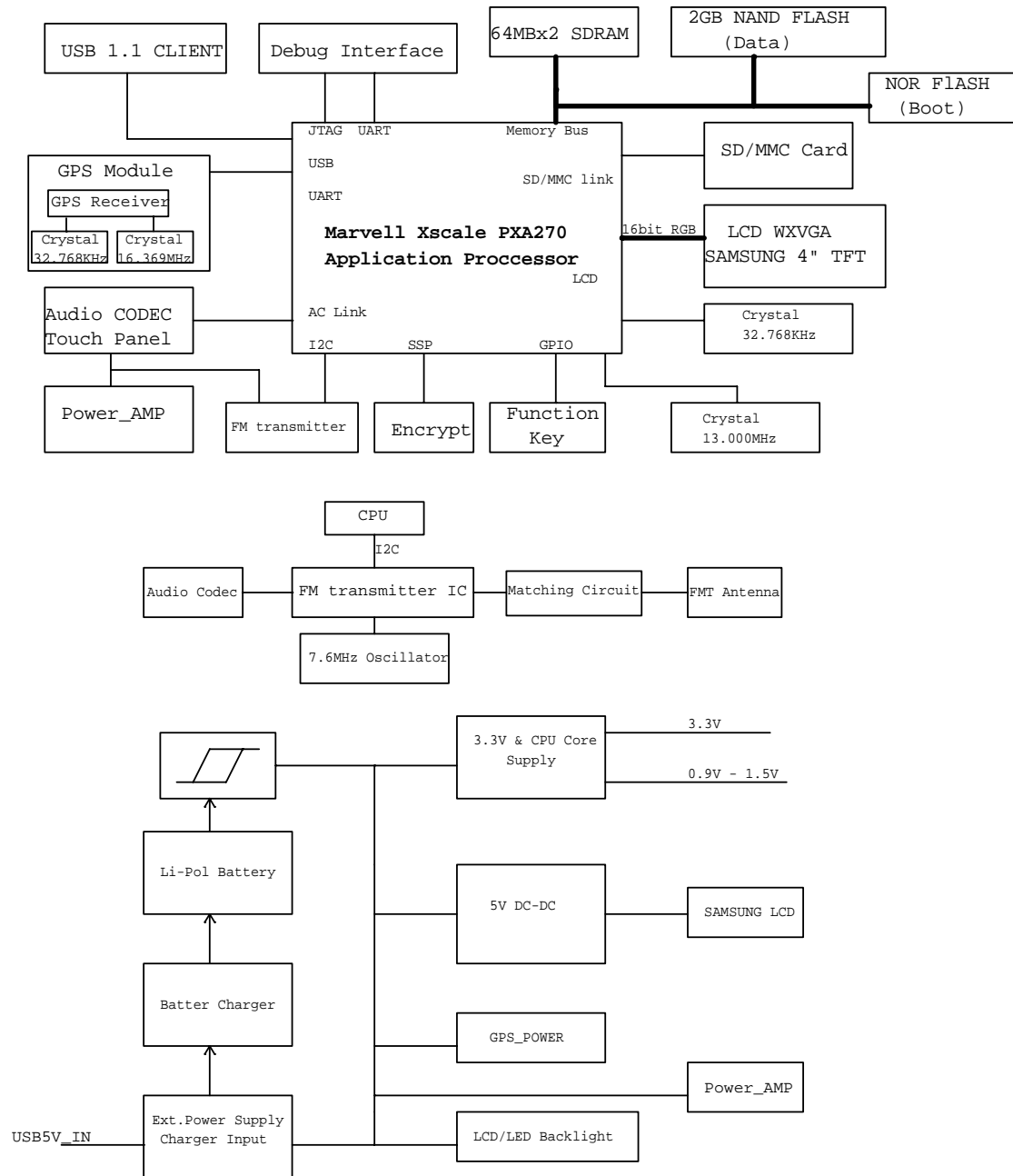


K4 Specification

1.K4 Diagram



2.K4 Function Description

This is a navigation system. It consists of CPU processor, GPS Receiver module, FM transmitter circuit, Power managing circuit etc. FM transmitter circuit consists of a FM modulated IC and antenna matching circuit.

The GPS module receives the GPS signal and demodulates the GPS signal and transmit to the CPU, the CPU receives the GPS information to locate current position, and calculates the best route to drive to destination using the maps stored in its memory.

When the FM function is open, the Audio codec will have audio signal output to the FM modulate circuit, and the RF modulate circuit will modulate the audio signal to FM signal, and then it will transmit from the Antenna matching circuit.

The power of the system was supplied by battery or USB adaptor, it will be sent out to each circuit after filter by capacitance